

VILLAGE HOMES



FRONT ELEVATION
OPTION A



SIDE ELEVATION



REAR ELEVATION



SIDE ELEVATION



FRONT ELEVATION
OPTION B



SIDE ELEVATION



REAR ELEVATION



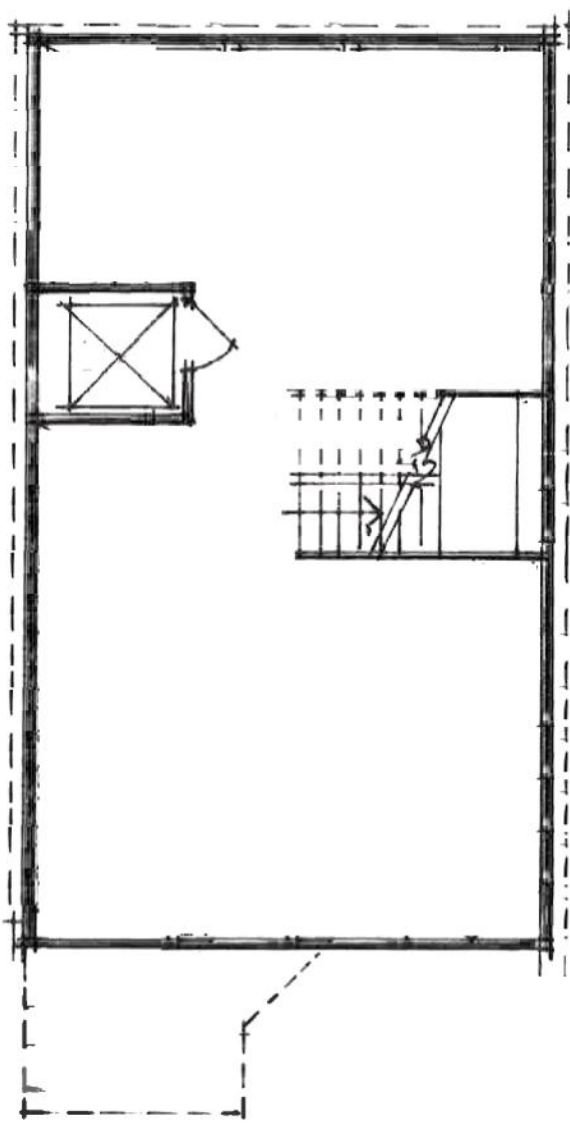
SIDE ELEVATION

EXTERIOR FINISH MATERIALS

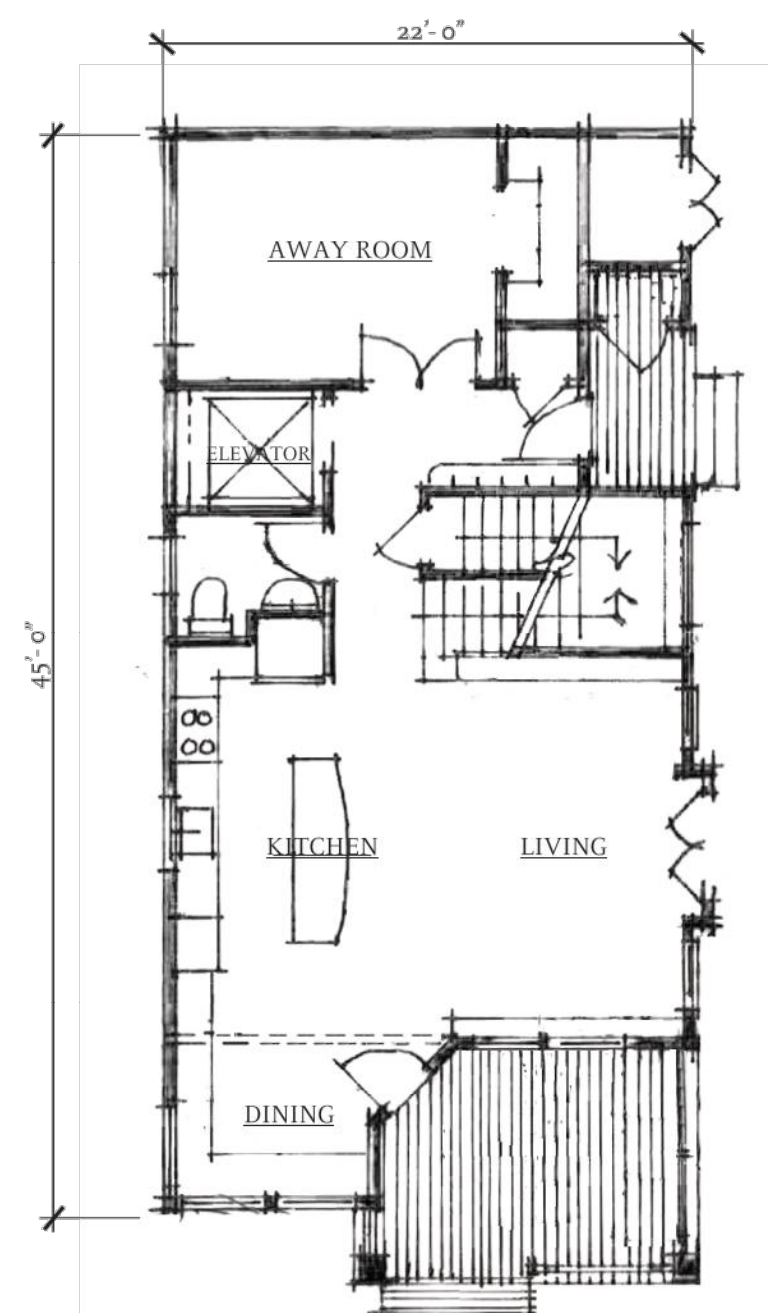
- METAL, RUBBER, ASPHALT OR COMPOSITE ROOFING
- SOLAR SHINGLES OR ROOF-MOUNTED PV PANELS
- SEAMLESS METAL GUTTERS AND DOWNSPOUTS
- VARIETY OF HORIZONTAL, SHINGLE AND VERTICAL SIDING PROFILES
- STUCCO, PARGING, BRICK AND STONE VENEERS
- COMPOSITE CORBELS, BRACKETS, RAFTER TAILS AND DECORATIVE TRIM
- INSULATED DOUBLE-HUNG, CASEMENT AND FIXED WINDOWS WITH DIVIDED LITES
- INSULATED ENTRY AND PATIO DOORS
- COMPOSITE OR HEAVY TIMBER PORCH POSTS AND KNEE BRACES
- DECORATIVE RAILING AND GUARD RAIL SYSTEMS PER PLAN

Note of Intent:

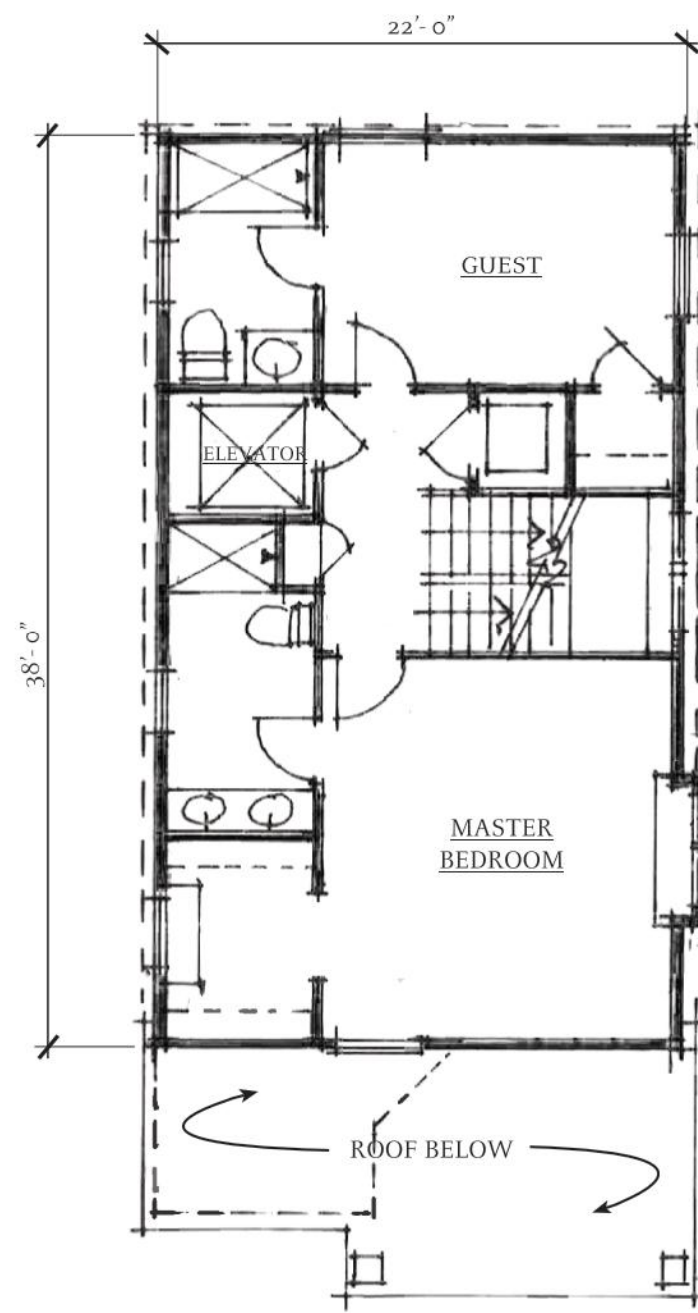
The above list is not exhaustive, but representative of some materials intended for use. The exterior finish palette will include a selection of natural and synthetic products that meet the team's high standards for aesthetics, environmental sustainability, and low maintenance. Veridian at County Farms will endeavor to source 80% or more of wood from site harvested, salvaged, or FSC certified wood products. In addition, the project shall avoid products containing red list materials, such as PVC and VOCs, wherever feasible.



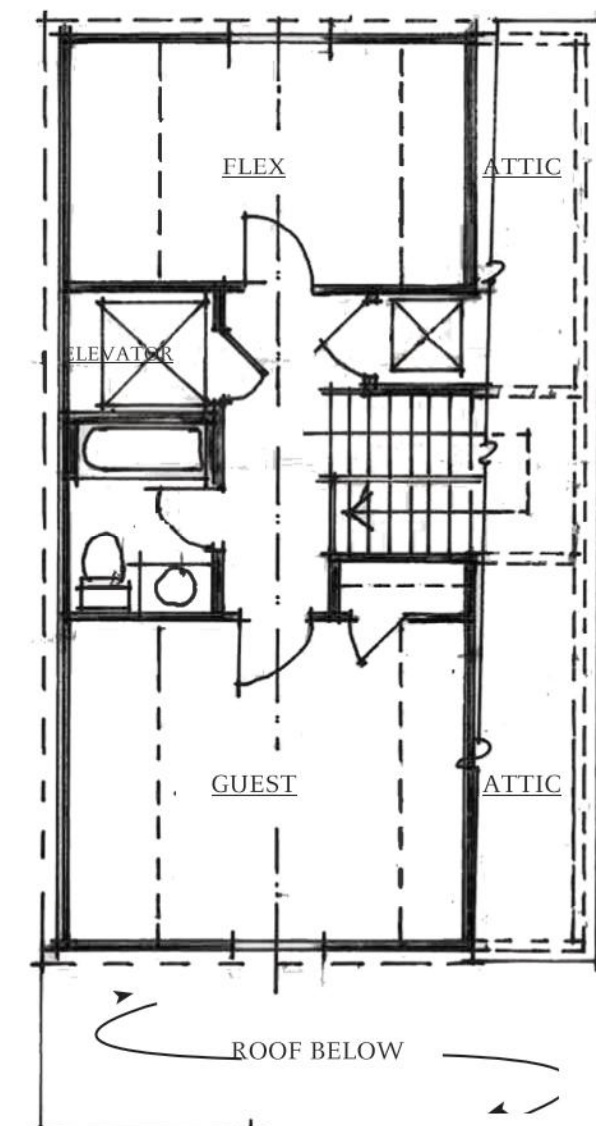
BASEMENT



FIRST FLOOR



SECOND FLOOR



THIRD FLOOR

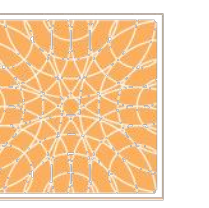
KEY MAP



Copyright © 2019 Union Studio Architecture & Community Design. All rights reserved. No part of this drawing may be used or reproduced in any form or by any means, or stored in a database or retrieval system, without prior permission.



UNION STUDIO
ARCHITECTURE & COMMUNITY DESIGN
140 UNION ST., PROVIDENCE, RI 02903



CLIENT
THRIVE COLLABORATIVE
c/o JONNA LUXURY HOMES
1957 CROOKS ROAD, SUITE B
TROY, MI 48064
JOEY JONNA (248) 566-6700

VERIDIAN AT COUNTY FARM SOUTH
MUNICIPAL REVIEW
VILLAGE HOMES - PLANS & ELEVATIONS

A-1

JOB No.	DATE: 05/01/2020
REVISIONS:	SHEET OF
REV1	
REV2	
REV3	
REV4	
REV5	
REV6	

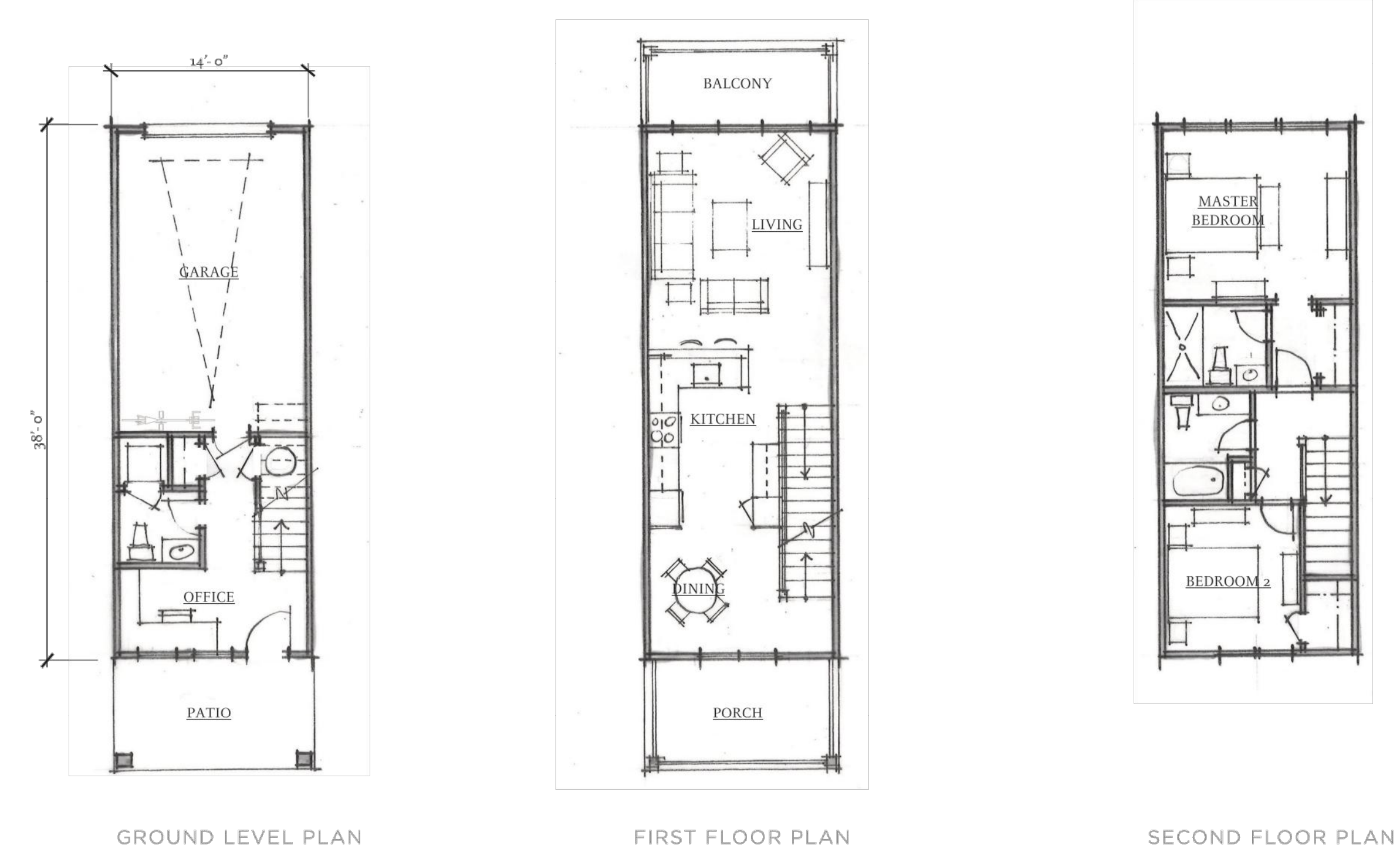
TOWNHOUSE A



EXTERIOR FINISH MATERIALS

- METAL, RUBBER, ASPHALT OR COMPOSITE ROOFING
- SOLAR SHINGLES OR ROOF-MOUNTED PV PANELS
- SEAMLESS METAL GUTTERS AND DOWNSPOUTS
- VARIETY OF HORIZONTAL, SHINGLE AND VERTICAL SIDING PROFILES
- STUCCO, PARGING, BRICK AND STONE VENEERS
- COMPOSITE CORBELS, BRACKETS, RAFTER TAILS AND DECORATIVE TRIM
- INSULATED DOUBLE-HUNG, CASEMENT AND FIXED WINDOWS WITH DIVIDED LITES
- INSULATED ENTRY AND PATIO DOORS
- COMPOSITE OR HEAVY TIMBER PORCH POSTS AND KNEE BRACES
- DECORATIVE RAILING AND GUARD RAIL SYSTEMS PER PLAN

Note of Intent:
 The above list is not exhaustive, but representative of some materials intended for use. The exterior finish palette will include a selection of natural and synthetic products that meet the team's high standards for aesthetics, environmental sustainability, and low maintenance. Veridian at County Farms will endeavor to source 80% or more of wood from site harvested, salvaged, or FSC certified wood products. In addition, the project shall avoid products containing red list materials, such as PVC and VOCs, wherever feasible.



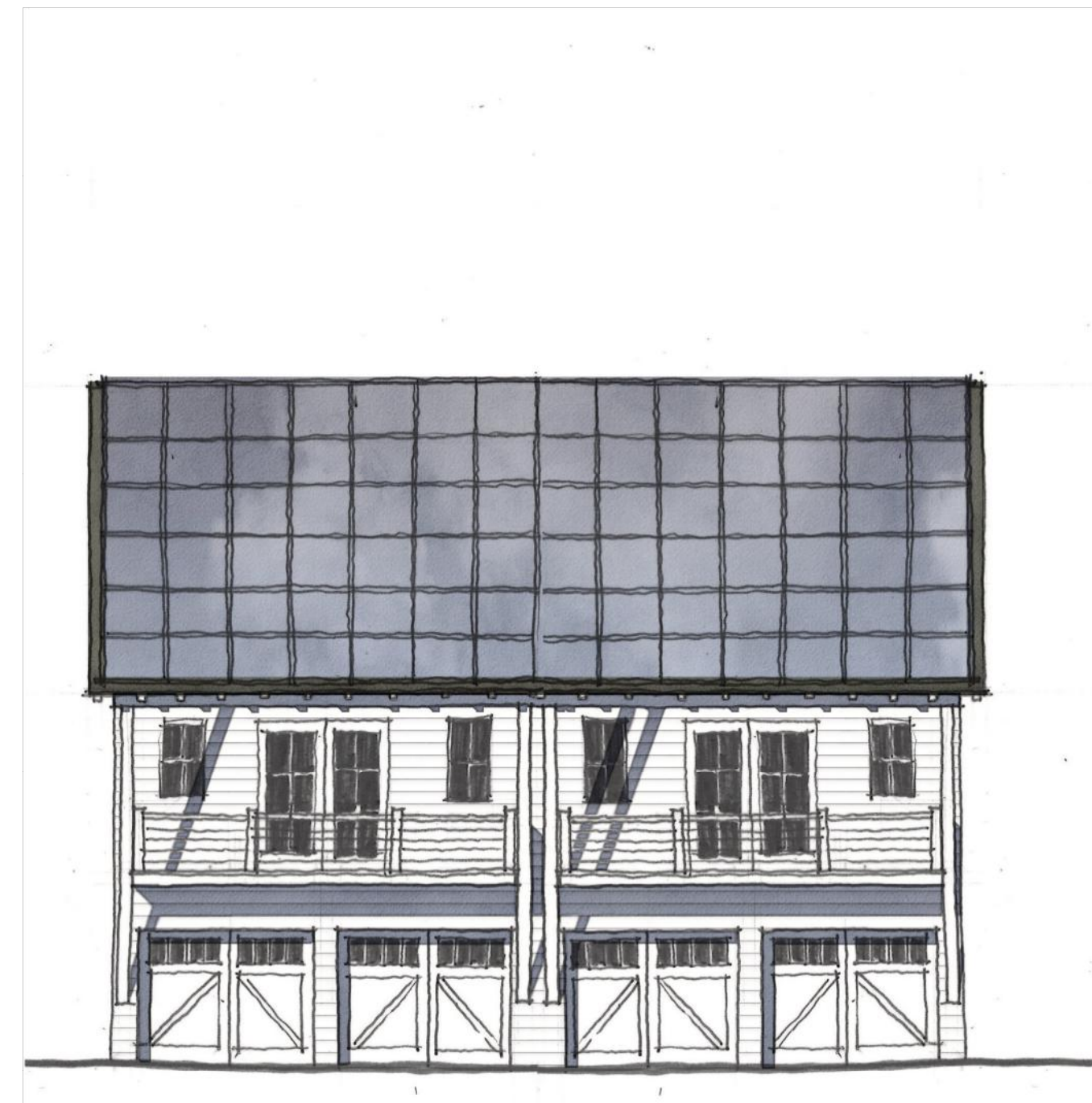
Copyright © 2019 Union Studio Architecture & Community Design. All rights reserved. No part of this drawing may be used or reproduced in any form or by any means, or stored in a database or retrieval system, without prior permission.

SCALE: 1/8"=1'-0"
 0 2 4 6 8 10 12

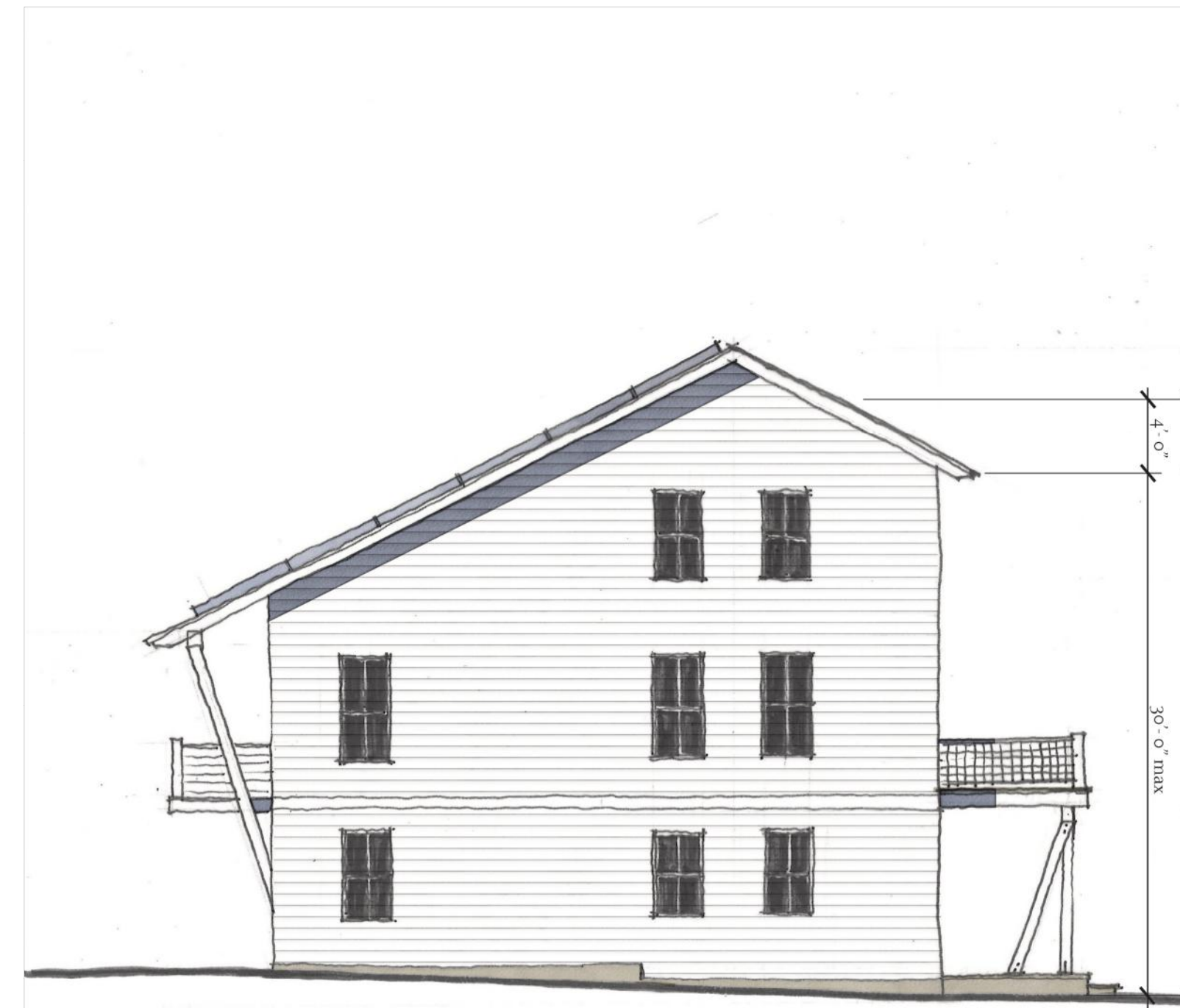
TOWNHOUSE B



FRONT ELEVATION (NORTH)



REAR ELEVATION (SOUTH)



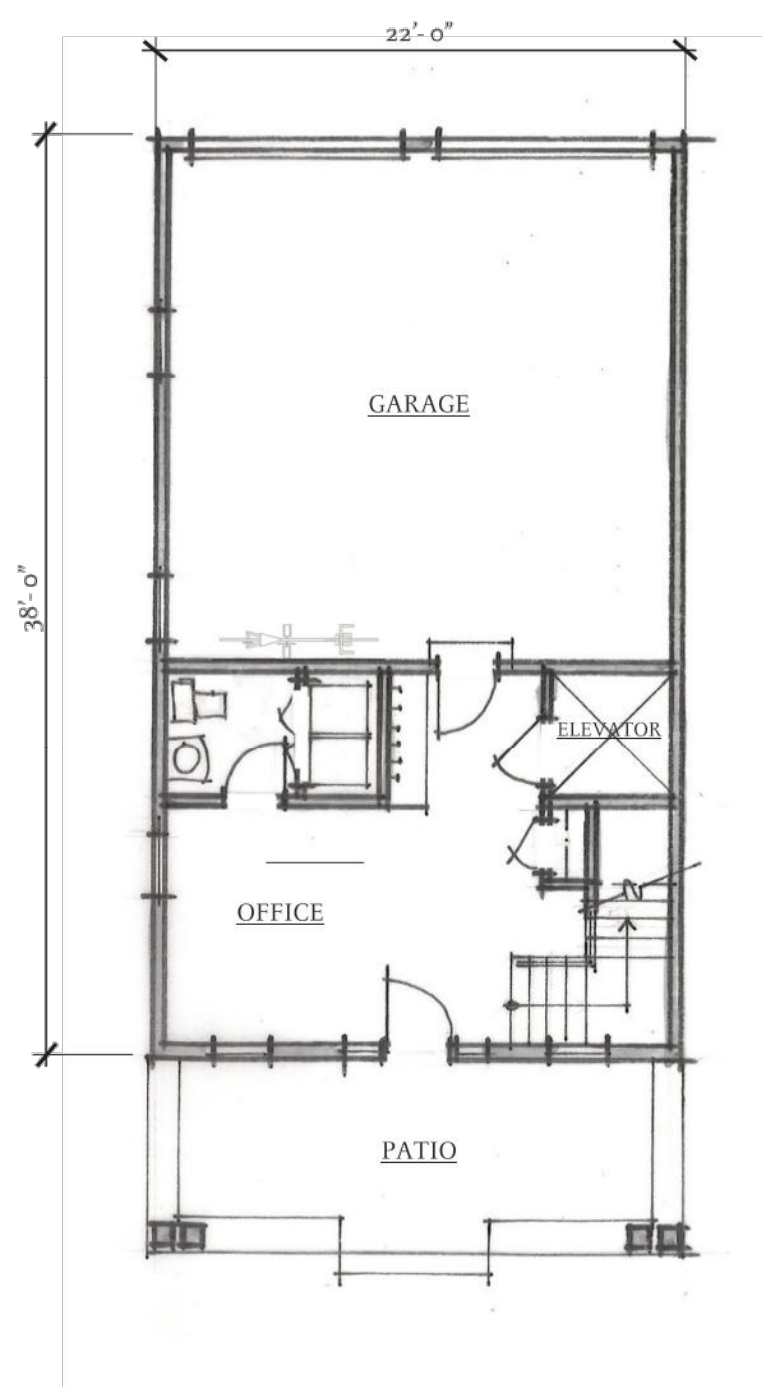
SIDE ELEVATION (EAST/WEST)

EXTERIOR FINISH MATERIALS

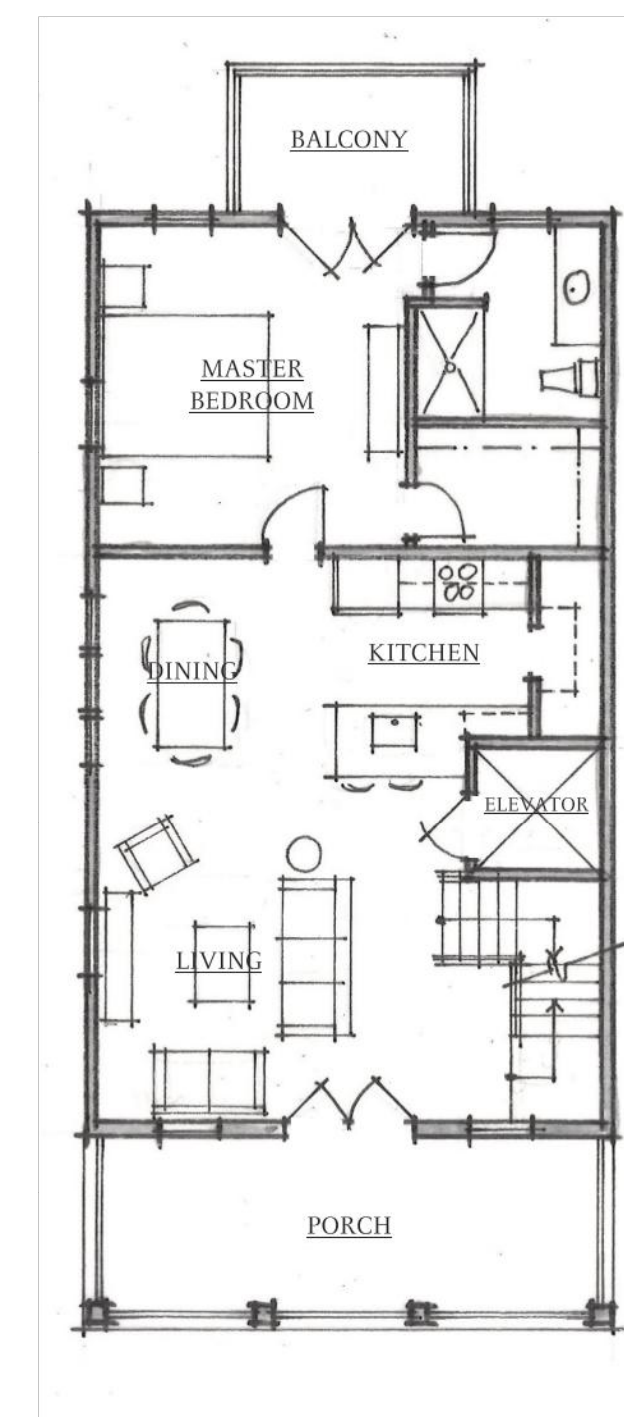
- METAL, RUBBER, ASPHALT OR COMPOSITE ROOFING
- SOLAR SHINGLES OR ROOF-MOUNTED PV PANELS
- SEAMLESS METAL GUTTERS AND DOWNSPOUTS
- VARIETY OF HORIZONTAL, SHINGLE AND VERTICAL SIDING PROFILES
- STUCCO, PARGING, BRICK AND STONE VENEERS
- COMPOSITE CORBELS, BRACKETS, RAFTER TAILS AND DECORATIVE TRIM
- INSULATED DOUBLE-HUNG, CASEMENT AND FIXED WINDOWS WITH DIVIDED LITES
- INSULATED ENTRY AND PATIO DOORS
- COMPOSITE OR HEAVY TIMBER PORCH POSTS AND KNEE BRACES
- DECORATIVE RAILING AND GUARD RAIL SYSTEMS PER PLAN

Note of Intent:

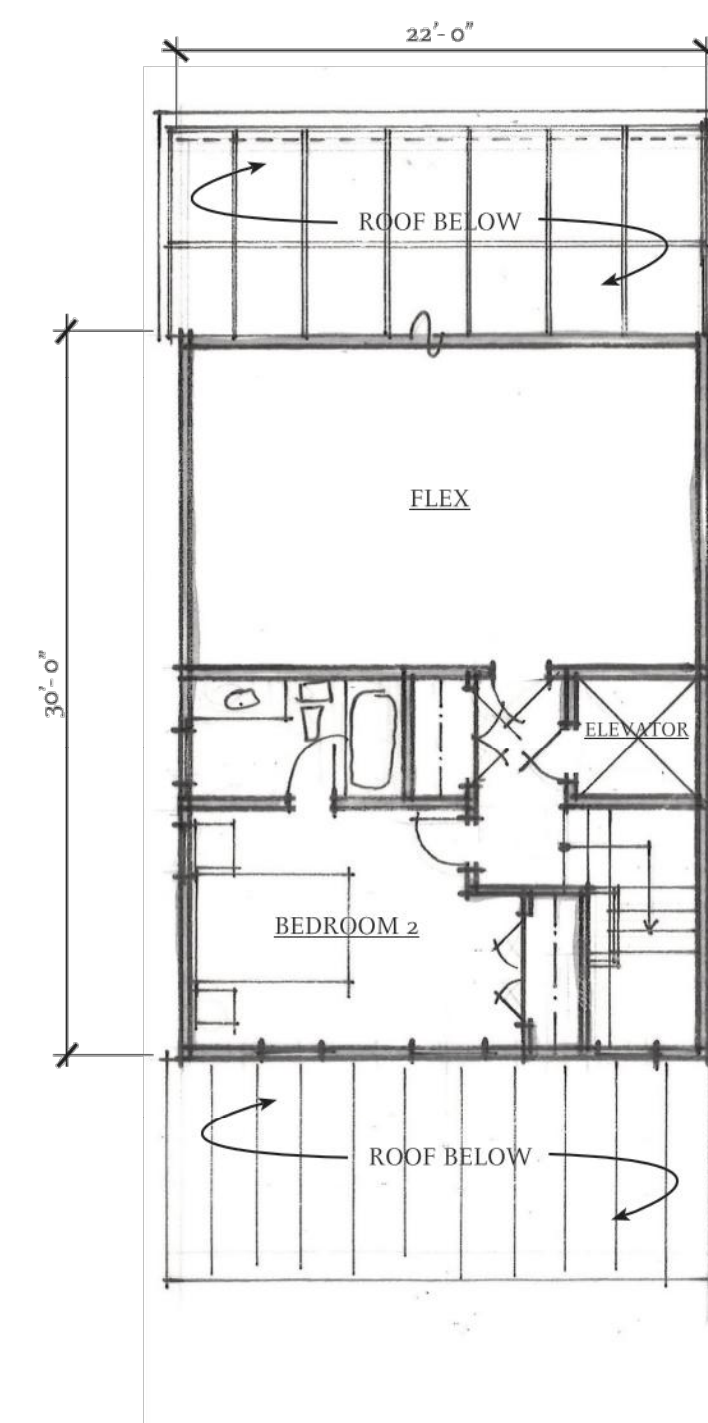
The above list is not exhaustive, but representative of some materials intended for use. The exterior finish palette will include a selection of natural and synthetic products that meet the team's high standards for aesthetics, environmental sustainability, and low maintenance. Veridian at County Farms will endeavor to source 80% or more of wood from site harvested, salvaged, or FSC certified wood products. In addition, the project shall avoid products containing red list materials, such as PVC and VOCs, wherever feasible.



GROUND LEVEL PLAN



FIRST FLOOR PLAN



SECOND FLOOR PLAN

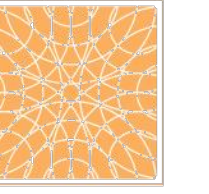
KEY MAP



Copyright © 2019 Union Studio Architecture & Community Design. All rights reserved. No part of this drawing may be used or reproduced in any form or by any means, or stored in a database or retrieval system, without prior permission.

SCALE: 1/8"=1'-0"
0 2 4 6 8 10 12

UNION STUDIO
ARCHITECTURE & COMMUNITY DESIGN
140 UNION ST., PROVIDENCE, RI 02903



CLIENT
THRIVE COLLABORATIVE
c/o JONNA LUXURY HOMES
1957 CROOKS ROAD, SUITE B
TROY, MI 48064
JOEY JONNA (248) 566-6700

VERIDIAN AT COUNTY FARM SOUTH
MUNICIPAL REVIEW
TOWNHOUSE B - PLANS & ELEVATIONS

A-3

DATE: 05/01/2020	SHEET	OF
JOB No.	REVISIONS:	
REV1		
REV2		
REV3		
REV4		
REV5		
REV6		

TOWNHOUSE C



FRONT ELEVATION (SOUTH)



SIDE ELEVATION (EAST/WEST)



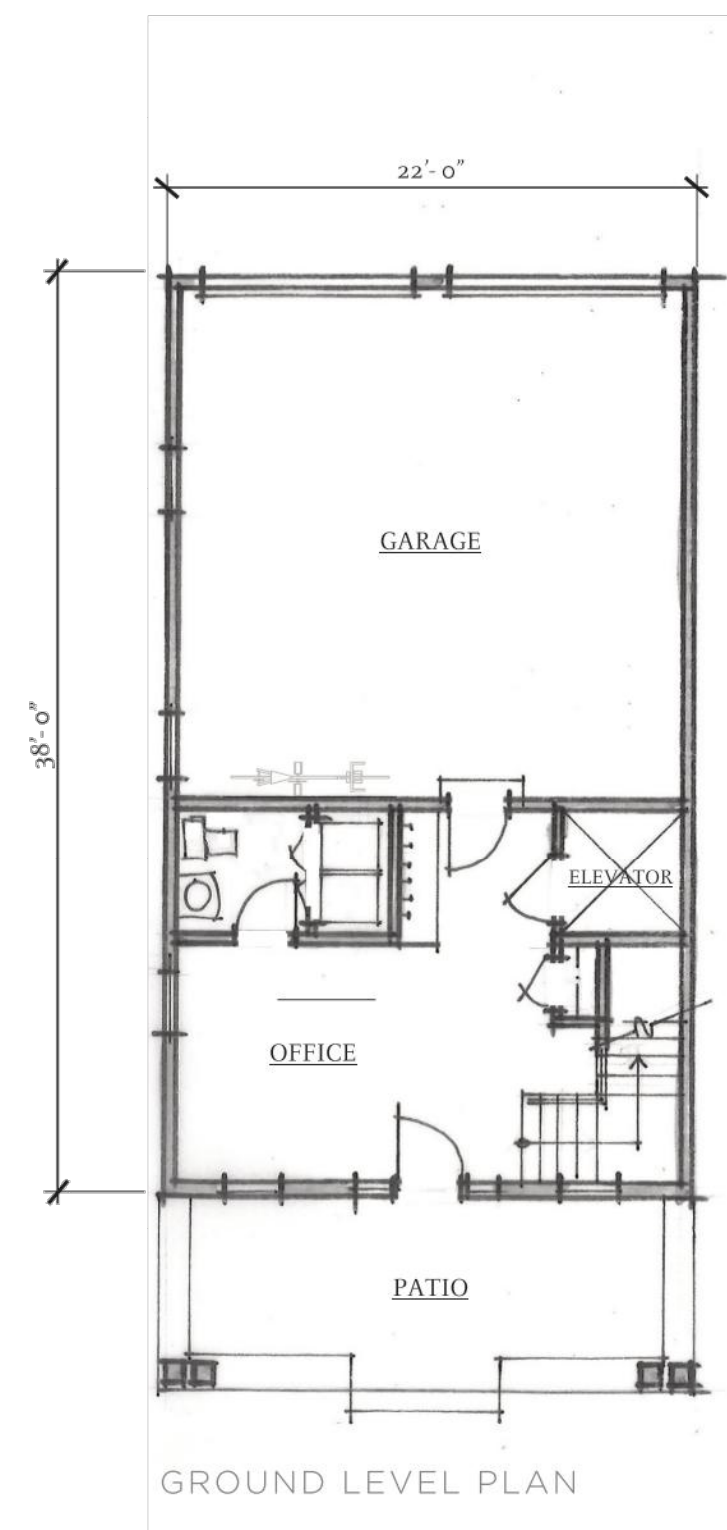
REAR ELEVATION (NORTH)

EXTERIOR FINISH MATERIALS

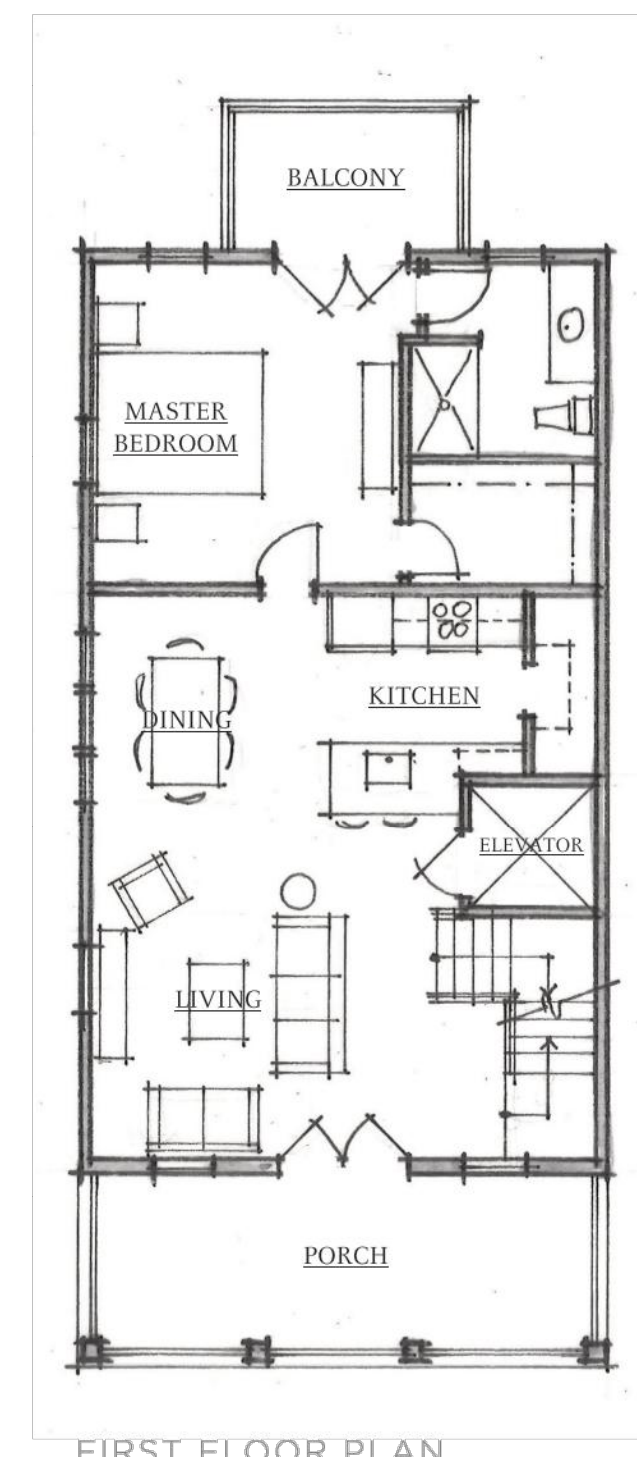
- METAL, RUBBER, ASPHALT OR COMPOSITE ROOFING
- SOLAR SHINGLES OR ROOF-MOUNTED PV PANELS
- SEAMLESS METAL GUTTERS AND DOWNSPOUTS
- VARIETY OF HORIZONTAL, SHINGLE AND VERTICAL SIDING PROFILES
- STUCCO, PARGING, BRICK AND STONE VENEERS
- COMPOSITE CORBELS, BRACKETS, RAFTER TAILS AND DECORATIVE TRIM
- INSULATED DOUBLE-HUNG, CASEMENT AND FIXED WINDOWS WITH DIVIDED LITES
- INSULATED ENTRY AND PATIO DOORS
- COMPOSITE OR HEAVY TIMBER PORCH POSTS AND KNEE BRACES
- DECORATIVE RAILING AND GUARD RAIL SYSTEMS PER PLAN

Note of Intent:

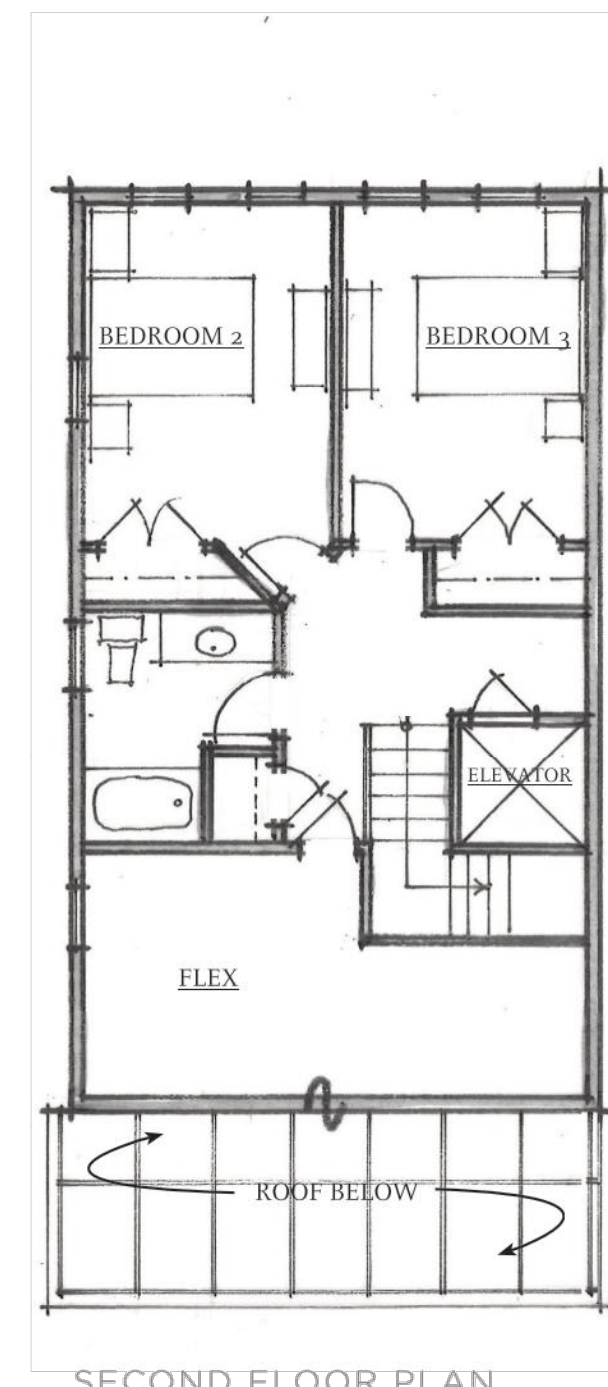
The above list is not exhaustive, but representative of some materials intended for use. The exterior finish palette will include a selection of natural and synthetic products that meet the team's high standards for aesthetics, environmental sustainability, and low maintenance. Veridian at County Farms will endeavor to source 80% or more of wood from site harvested, salvaged, or FSC certified wood products. In addition, the project shall avoid products containing red list materials, such as PVC and VOCs, wherever feasible.



GROUND LEVEL PLAN



FIRST FLOOR PLAN



SECOND FLOOR PLAN

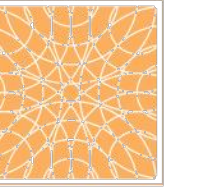
KEY MAP



Copyright © 2019 Union Studio Architecture & Community Design. All rights reserved. No part of this drawing may be used or reproduced in any form or by any means, or stored in a database or retrieval system, without prior permission.

SCALE: 1/8"=1'-0"
0 1 2 4 8 16 32

UNION STUDIO
ARCHITECTURE & COMMUNITY DESIGN
140 UNION ST., PROVIDENCE, RI 02903



CLIENT
THRIVE COLLABORATIVE
c/o JONNA LUXURY HOMES
1957 CROOKS ROAD, SUITE B
TROY, MI 48064
JOEY JONNA (248) 566-6700

VERIDIAN AT COUNTY FARM SOUTH
MUNICIPAL REVIEW
TOWNHOUSE C - PLANS & ELEVATIONS

A-4

DATE: 05/01/2020	SHEET	OF
JOB No.	REVISIONS:	
REV1		
REV2		
REV3		
REV4		
REV5		
REV6		

TOWNHOUSE D



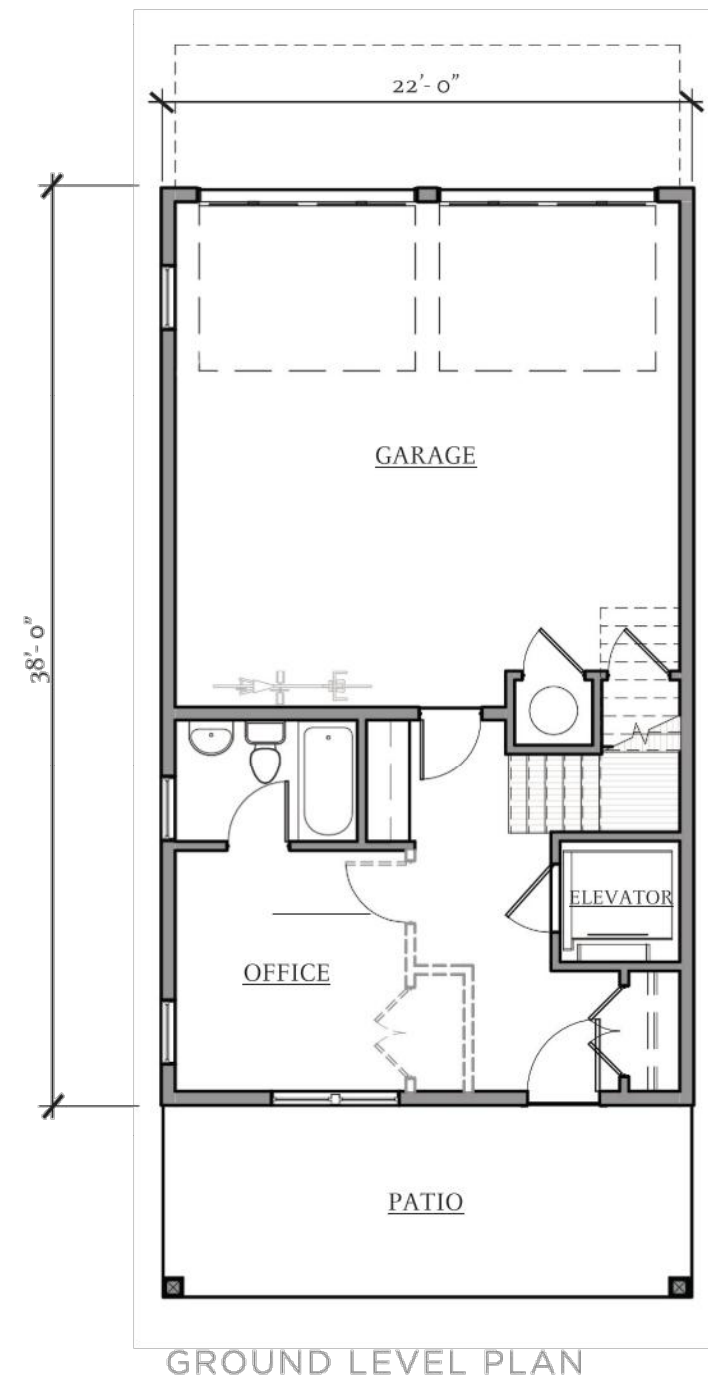
FRONT ELEVATION



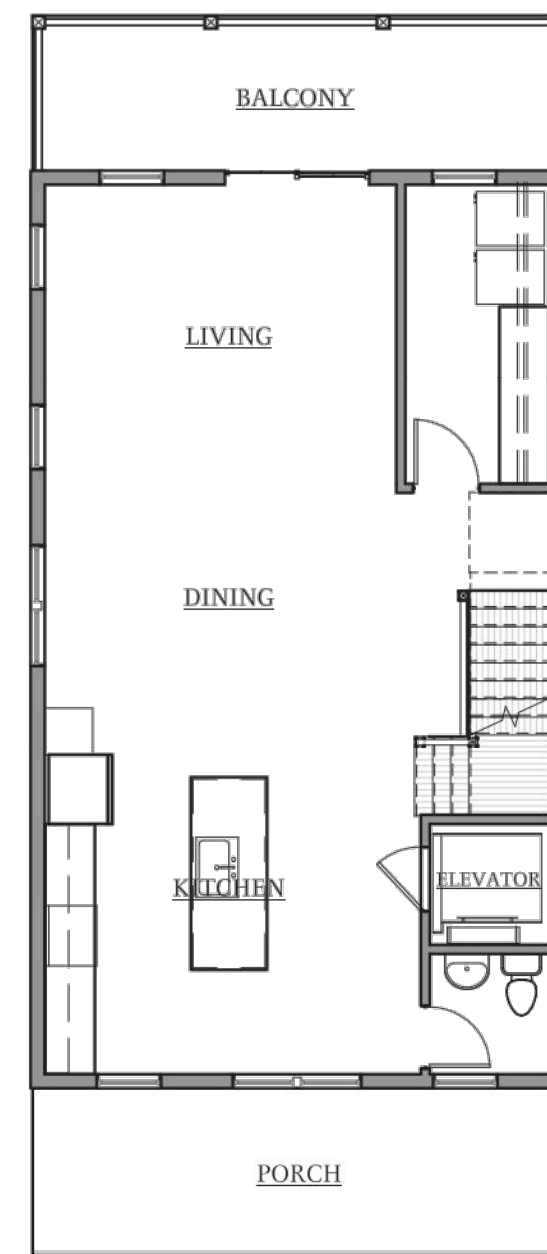
SIDE ELEVATION



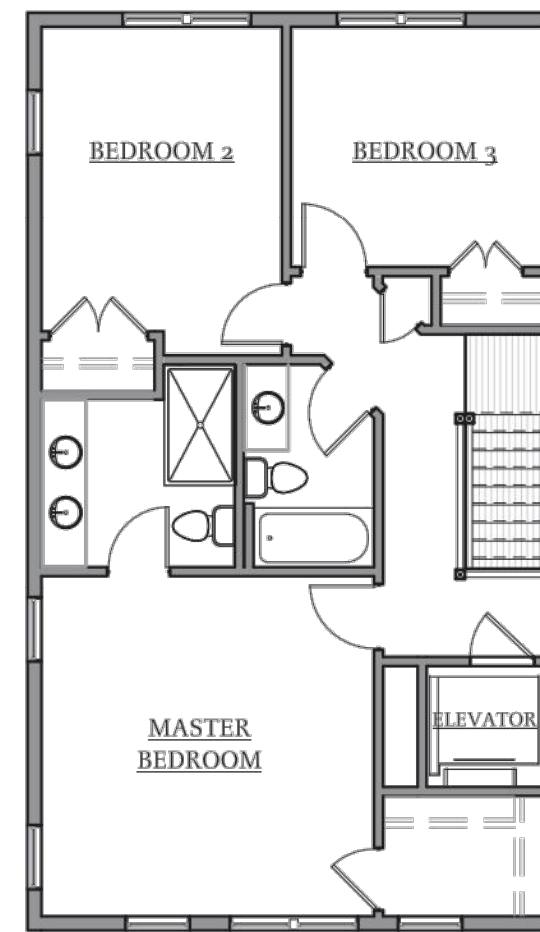
REAR ELEVATION



GROUND LEVEL PLAN



FIRST FLOOR PLAN



SECOND FLOOR PLAN

KEY MAP

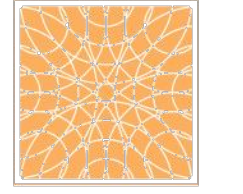


EXTERIOR FINISH MATERIALS

- METAL, RUBBER, ASPHALT OR COMPOSITE ROOFING
- SOLAR SHINGLES OR ROOF-MOUNTED PV PANELS
- SEAMLESS METAL GUTTERS AND DOWNSPOUTS
- VARIETY OF HORIZONTAL, SHINGLE AND VERTICAL SIDING PROFILES
- STUCCO, PARGING, BRICK AND STONE VENEERS
- COMPOSITE CORBELS, BRACKETS, RAFTER TAILS AND DECORATIVE TRIM
- INSULATED DOUBLE-HUNG, CASEMENT AND FIXED WINDOWS WITH DIVIDED LITES
- INSULATED ENTRY AND PATIO DOORS
- COMPOSITE OR HEAVY TIMBER PORCH POSTS AND KNEE BRACES
- DECORATIVE RAILING AND GUARD RAIL SYSTEMS PER PLAN

Note of Intent:

The above list is not exhaustive, but representative of some materials intended for use. The exterior finish palette will include a selection of natural and synthetic products that meet the team's high standards for aesthetics, environmental sustainability, and low maintenance. Veridian at County Farms will endeavor to source 80% or more of wood from site harvested, salvaged, or FSC certified wood products. In addition, the project shall avoid products containing red list materials, such as PVC and VOCs, wherever feasible.



WALKUP APARTMENTS



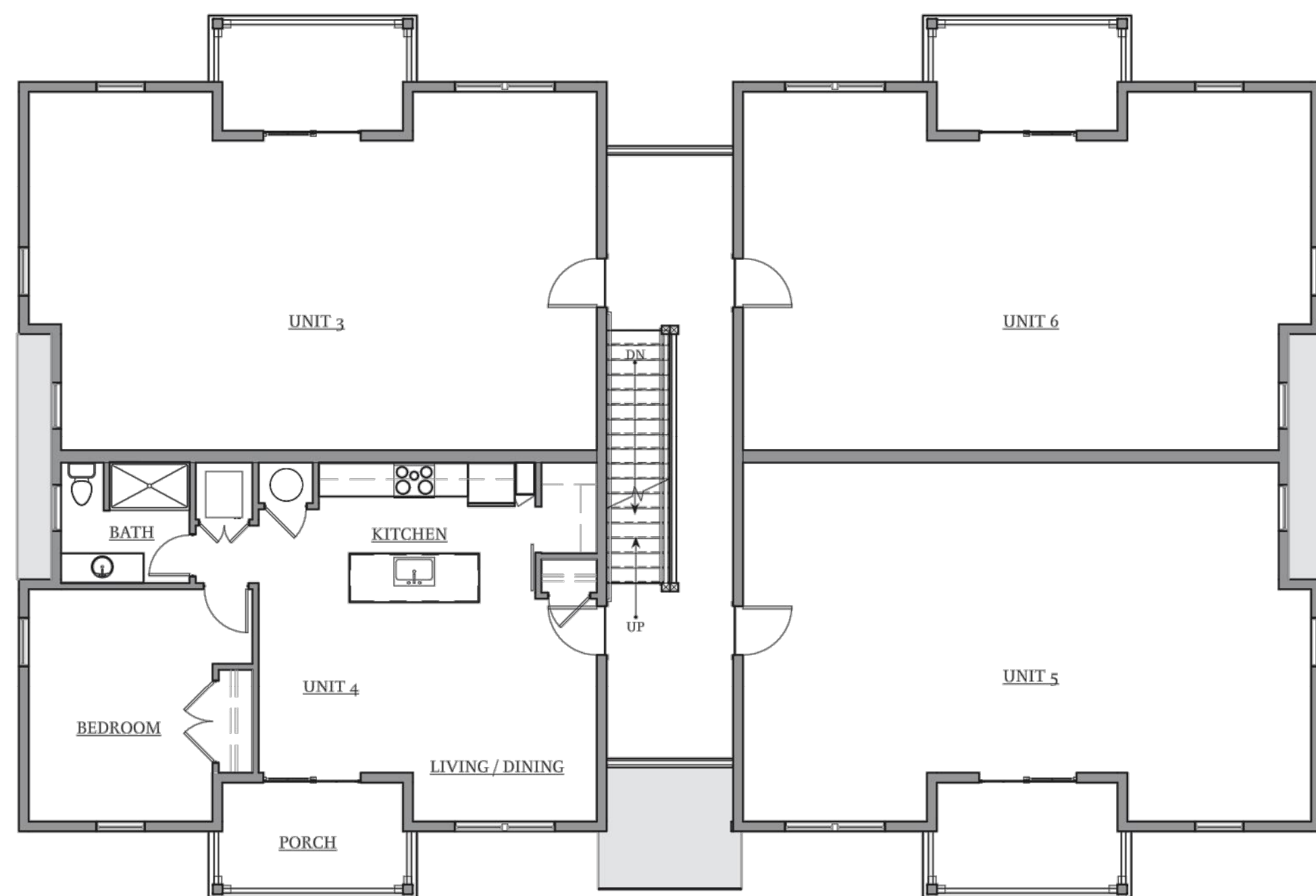
FRONT ELEVATION



SIDE ELEVATION



REAR ELEVATION



SECOND FLOOR PLAN (THIRD FLOOR SIMILAR)



FIRST FLOOR PLAN

KEY MAP



EXTERIOR FINISH MATERIALS

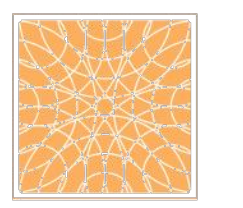
- METAL, RUBBER, ASPHALT OR COMPOSITE ROOFING
- SOLAR SHINGLES OR ROOF-MOUNTED PV PANELS
- SEAMLESS METAL GUTTERS AND DOWNSPOUTS
- VARIETY OF HORIZONTAL, SHINGLE AND VERTICAL SIDING PROFILES
- STUCCO, PARGING, BRICK AND STONE VENEERS
- COMPOSITE CORBELS, BRACKETS, RAFTER TAILS AND DECORATIVE TRIM
- INSULATED DOUBLE-HUNG, CASEMENT AND FIXED WINDOWS WITH DIVIDED LITES
- INSULATED ENTRY AND PATIO DOORS
- COMPOSITE OR HEAVY TIMBER PORCH POSTS AND KNEE BRACES
- DECORATIVE RAILING AND GUARD RAIL SYSTEMS PER PLAN

Note of Intent:

The above list is not exhaustive, but representative of some materials intended for use. The exterior finish palette will include a selection of natural and synthetic products that meet the team's high standards for aesthetics, environmental sustainability, and low maintenance. Veridian at County Farms will endeavor to source 80% or more of wood from site harvested, salvaged, or FSC certified wood products. In addition, the project shall avoid products containing red list materials, such as PVC and VOCs, wherever feasible.

Copyright © 2019 Union Studio Architecture & Community Design. All rights reserved. No part of this drawing may be used or reproduced in any form or by any means, or stored in a database or retrieval system, without prior permission.

UNION STUDIO
ARCHITECTURE & COMMUNITY DESIGN
140 UNION ST., PROVIDENCE, RI 02903



CLIENT
THRIVE COLLABORATIVE
c/o JONNA LUXURY HOMES
1957 CROOKS ROAD, SUITE B
TROY, MI 48064
JOEY JONNA (248) 566-6700

VERIDIAN AT COUNTY FARM SOUTH
MUNICIPAL REVIEW
WALKUP APARTMENTS - PLANS & ELEVATIONS

A-6

JOB No.	DATE	05/01/2020
REVISIONS:	SHEET	OF
REV1		
REV2		
REV3		
REV4		
REV5		
REV6		

NEST MICROUNITS



SOUTH ELEVATION



EAST ELEVATION



WEST ELEVATION



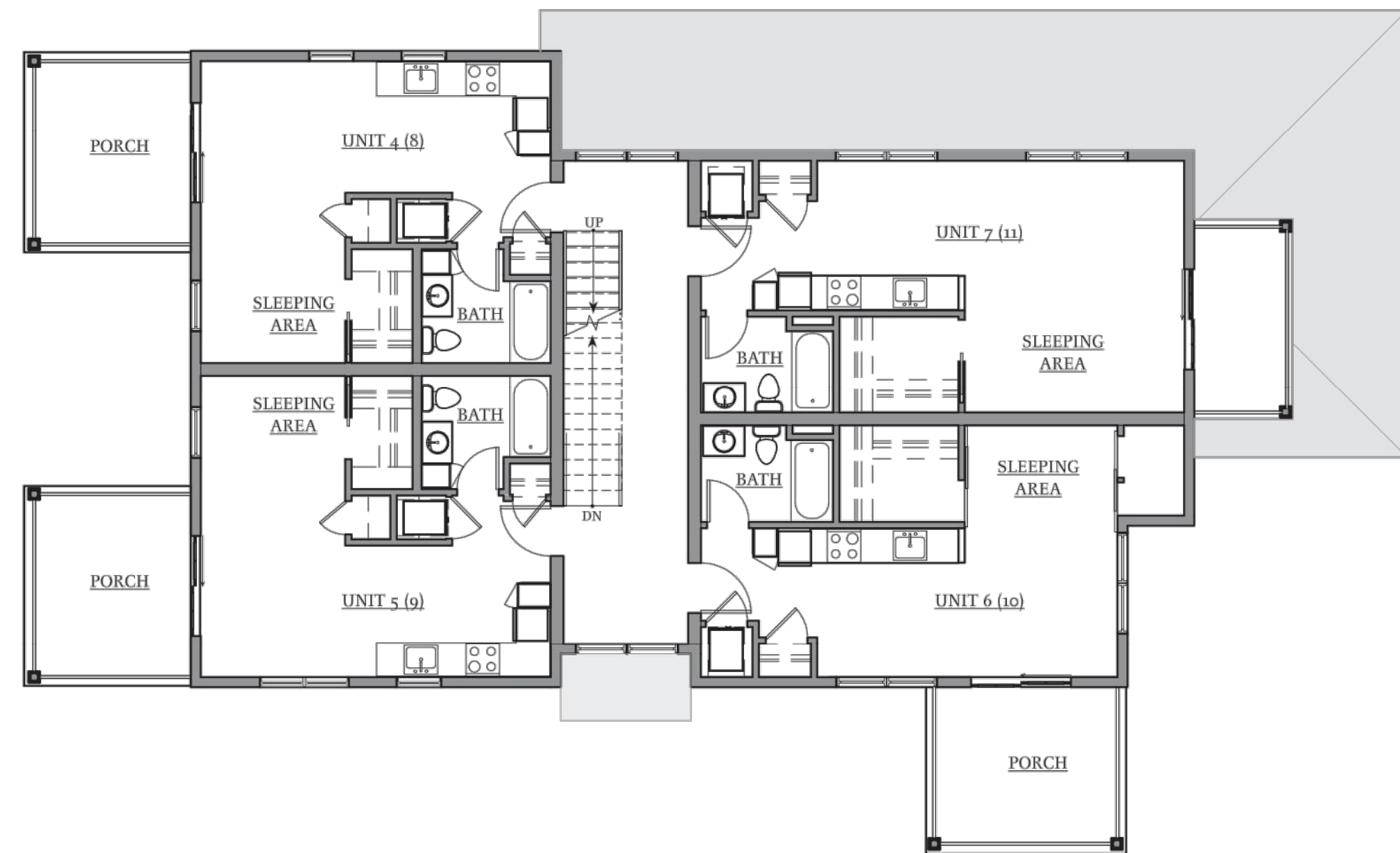
NORTH ELEVATION

EXTERIOR FINISH MATERIALS

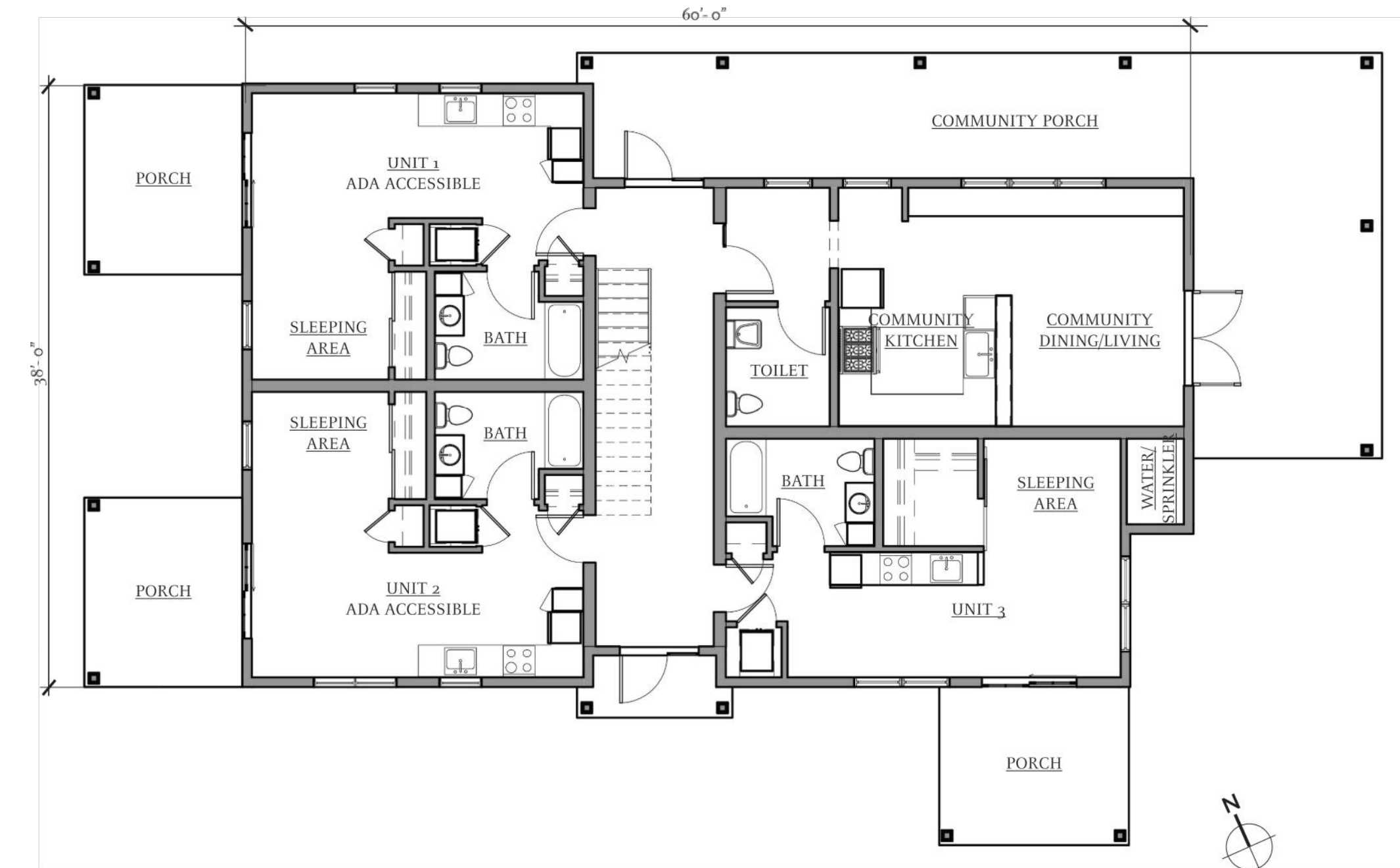
- METAL, RUBBER, ASPHALT OR COMPOSITE ROOFING
- SOLAR SHINGLES OR ROOF-MOUNTED PV PANELS
- SEAMLESS METAL GUTTERS AND DOWNSPOUTS
- VARIETY OF HORIZONTAL, SHINGLE AND VERTICAL SIDING PROFILES
- STUCCO, PARGING, BRICK AND STONE VENEERS
- COMPOSITE CORBELS, BRACKETS, RAFTER TAILS AND DECORATIVE TRIM
- INSULATED DOUBLE-HUNG, CASEMENT AND FIXED WINDOWS WITH DIVIDED LITES
- INSULATED ENTRY AND PATIO DOORS
- COMPOSITE OR HEAVY TIMBER PORCH POSTS AND KNEE BRACES
- DECORATIVE RAILING AND GUARD RAIL SYSTEMS PER PLAN

Note of Intent:

The above list is not exhaustive, but representative of some materials intended for use. The exterior finish palette will include a selection of natural and synthetic products that meet the team's high standards for aesthetics, environmental sustainability, and low maintenance. Veridian at County Farms will endeavor to source 80% or more of wood from site harvested, salvaged, or FSC certified wood products. In addition, the project shall avoid products containing red list materials, such as PVC and VOCs, wherever feasible.



SECOND FLOOR PLAN (THIRD FLOOR SIMILAR)

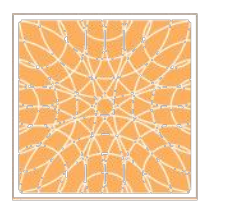


FIRST FLOOR PLAN

KEY MAP



Copyright © 2019 Union Studio Architecture & Community Design. All rights reserved. No part of this drawing may be used or reproduced in any form or by any means, or stored in a database or retrieval system, without prior permission.



FARMHOUSE



WEST ELEVATION



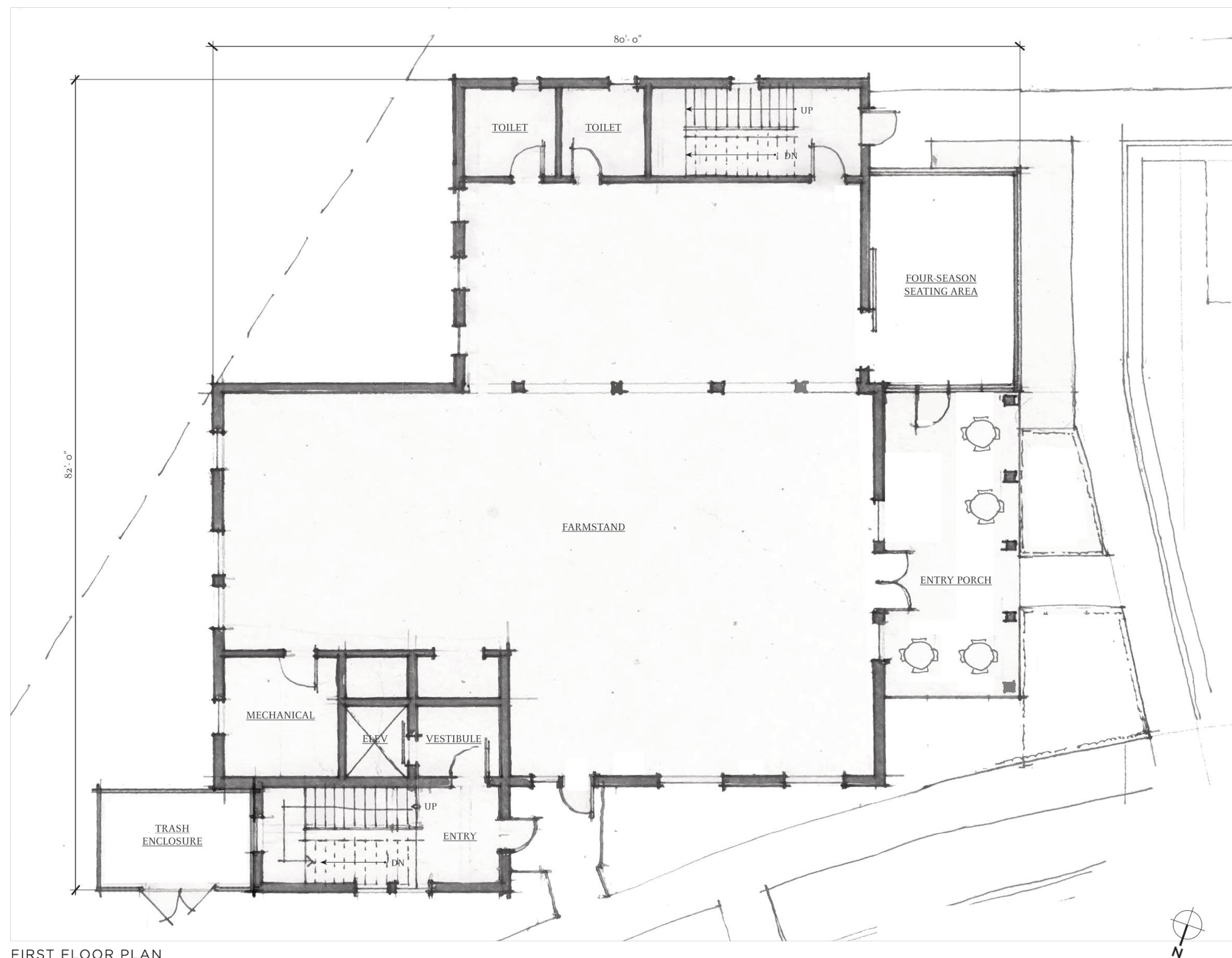
NORTH ELEVATION

EXTERIOR FINISH MATERIALS

- METAL, RUBBER, ASPHALT OR COMPOSITE ROOFING
- SOLAR SHINGLES OR ROOF-MOUNTED PV PANELS
- SEAMLESS METAL GUTTERS AND DOWNSPOUTS
- VARIETY OF HORIZONTAL, SHINGLE AND VERTICAL SIDING PROFILES
- STUCCO, PARGING, BRICK AND STONE VENEERS
- COMPOSITE CORBELS, BRACKETS, RAFTER TAILS AND DECORATIVE TRIM
- INSULATED DOUBLE-HUNG, CASEMENT AND FIXED WINDOWS WITH DIVIDED LITES
- INSULATED ENTRY AND PATIO DOORS
- COMPOSITE OR HEAVY TIMBER PORCH POSTS AND KNEE BRACES
- DECORATIVE RAILING AND GUARD RAIL SYSTEMS PER PLAN

Note of Intent:

The above list is not exhaustive, but representative of some materials intended for use. The exterior finish palette will include a selection of natural and synthetic products that meet the team's high standards for aesthetics, environmental sustainability, and low maintenance. Veridian at County Farms will endeavor to source 80% or more of wood from site harvested, salvaged, or FSC certified wood products. In addition, the project shall avoid products containing red list materials, such as PVC and VOCs, wherever feasible.



FIRST FLOOR PLAN

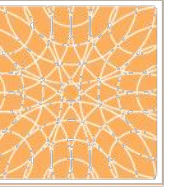
KEY MAP



Copyright © 2019 Union Studio Architecture & Community Design. All rights reserved. No part of this drawing may be used or reproduced in any form or by any means, or stored in a database or retrieval system, without prior permission.

SCALE: 1/8"=1'-0"
0 2 4 6 8 10 12

UNION STUDIO
ARCHITECTURE & COMMUNITY DESIGN
140 UNION ST., PROVIDENCE, RI 02903



CLIENT
THRIVE COLLABORATIVE
c/o JONNA LUXURY HOMES
1957 CROOKS ROAD, SUITE B
TROY, MI 48064
JOEY JONNA (248) 566-6700

VERIDIAN AT COUNTY FARM SOUTH
MUNICIPAL REVIEW
FARMHOUSE - PLANS & ELEVATIONS

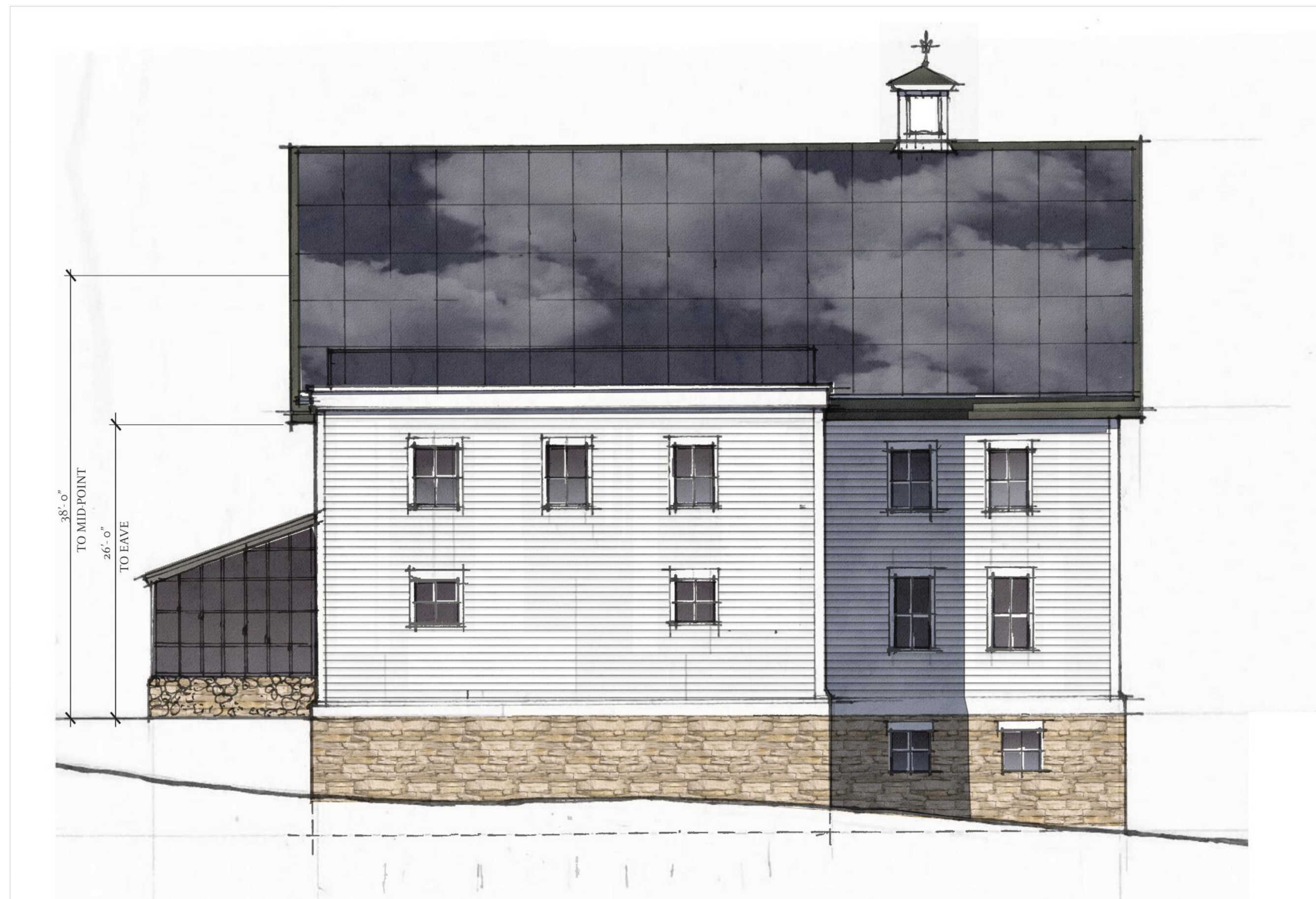
A-8

DATE: 05/01/2020	SHEET	OF
JOB No.	REVISIONS:	
REV1		
REV2		
REV3		
REV4		
REV5		
REV6		

FARMHOUSE



EAST ELEVATION



SOUTH ELEVATION

EXTERIOR FINISH MATERIALS

- METAL, RUBBER, ASPHALT OR COMPOSITE ROOFING
- SOLAR SHINGLES OR ROOF-MOUNTED PV PANELS
- SEAMLESS METAL GUTTERS AND DOWNSPOUTS
- VARIETY OF HORIZONTAL, SHINGLE AND VERTICAL SIDING PROFILES
- STUCCO, PARGING, BRICK AND STONE VENEERS
- COMPOSITE CORBELS, BRACKETS, RAFTER TAILS AND DECORATIVE TRIM
- INSULATED DOUBLE-HUNG, CASEMENT AND FIXED WINDOWS WITH DIVIDED LITES
- INSULATED ENTRY AND PATIO DOORS
- COMPOSITE OR HEAVY TIMBER PORCH POSTS AND KNEE BRACES
- DECORATIVE RAILING AND GUARD RAIL SYSTEMS PER PLAN

Note of Intent:

The above list is not exhaustive, but representative of some materials intended for use. The exterior finish palette will include a selection of natural and synthetic products that meet the team's high standards for aesthetics, environmental sustainability, and low maintenance. Veridian at County Farms will endeavor to source 80% or more of wood from site harvested, salvaged, or FSC certified wood products. In addition, the project shall avoid products containing red list materials, such as PVC and VOCs, wherever feasible.

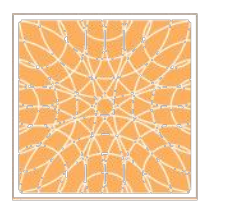
KEY MAP



SCALE: 1/8"=1'-0"
0 2 4 6 8 10 12

Copyright © 2019 Union Studio Architecture & Community Design. All rights reserved. No part of this drawing may be used or reproduced in any form or by any means, or stored in a database or retrieval system, without prior permission.

UNION STUDIO
ARCHITECTURE & COMMUNITY DESIGN
140 UNION ST. PROVIDENCE, RI 02903



CLIENT
THRIVE COLLABORATIVE
c/o JONNA LUXURY HOMES
1957 CROOKS ROAD, SUITE B
TROY, MI 48064
JOEY JONNA (248) 566-6700

VERIDIAN AT COUNTY FARM SOUTH
MUNICIPAL REVIEW
FARMHOUSE - ELEVATIONS

A-9

DATE: 05/01/2020	SHEET	OF
JOB No.		
REVISIONS:		
REV1		
REV2		
REV3		
REV4		
REV5		
REV6		

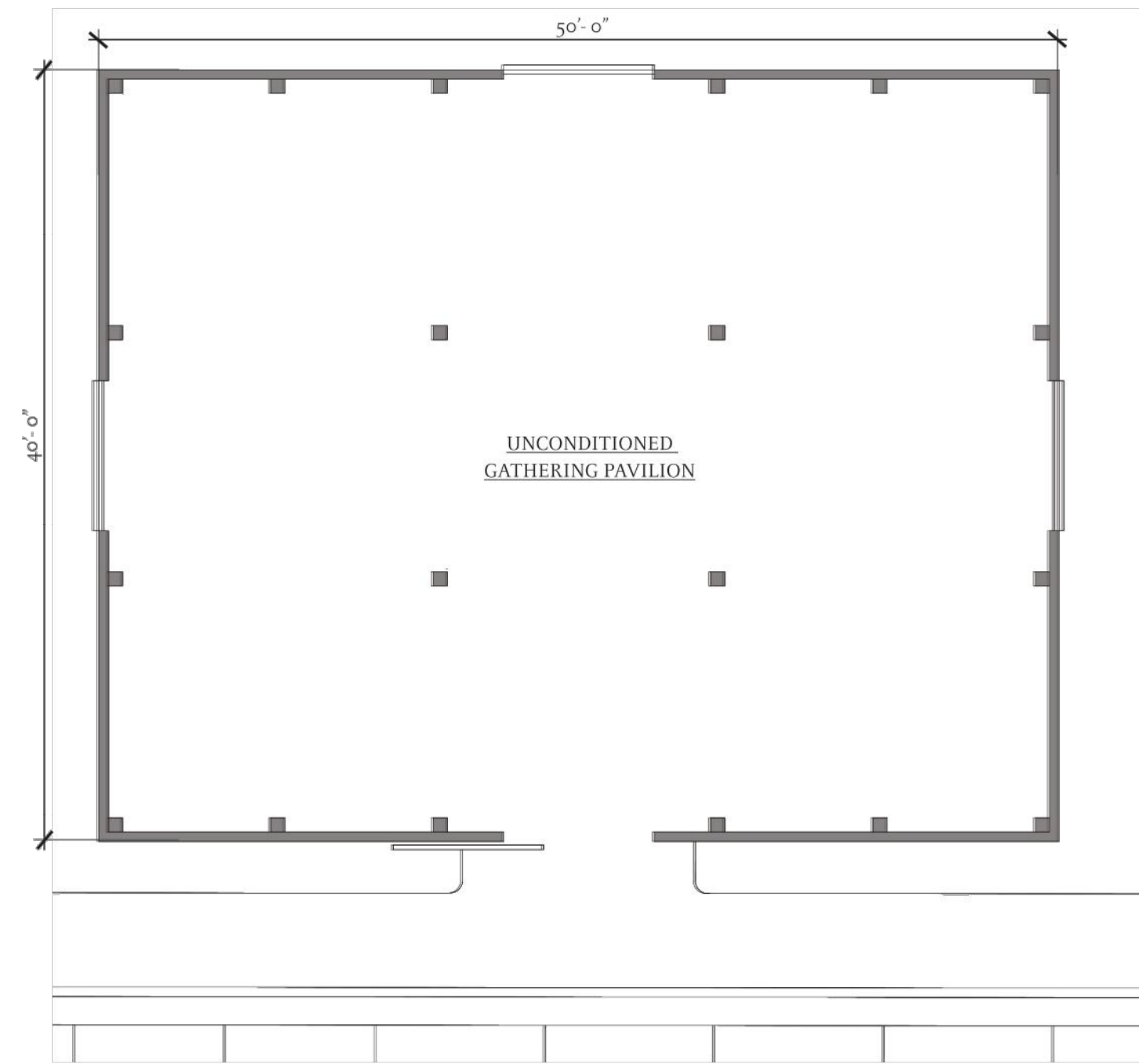
BARN & BIKE SHED



EXISTING BARN PHOTO



EXISTING BARN PHOTO

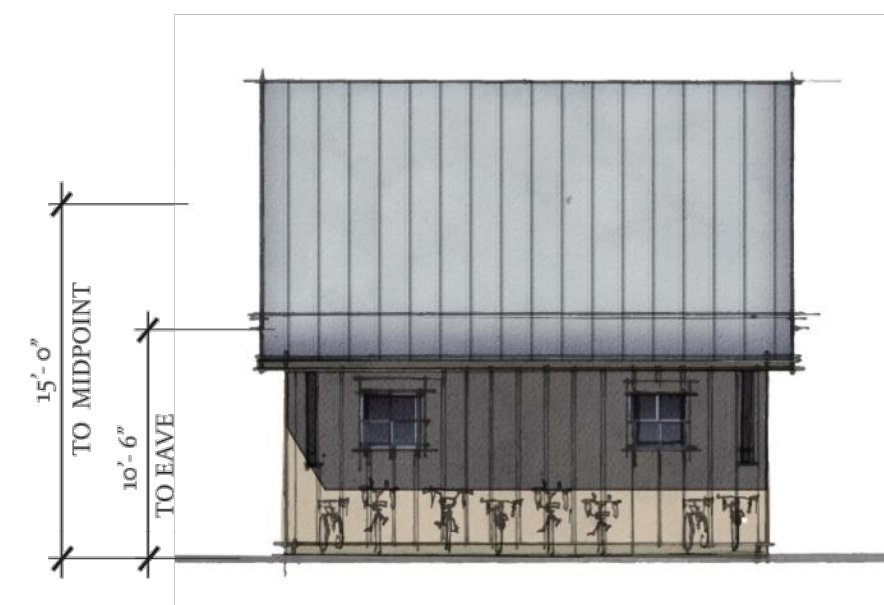


BARN FLOOR PLAN



EXISTING BARN PHOTO

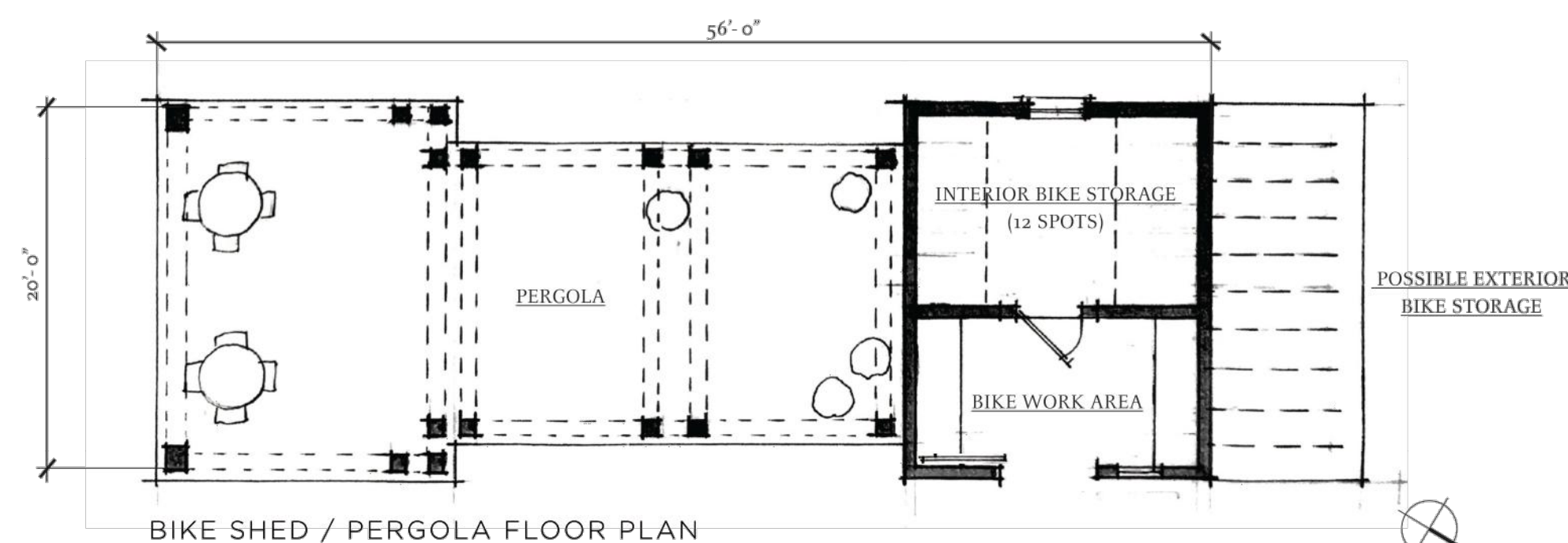
NOTE: Existing, pre-Civil War barn to be de-constructed and relocated to Veridian site. It will be reconstructed on a new concrete / stone foundation. Barn will serve as unconditioned community gathering space.
 +/- 18'-0" from finish floor to the bottom of the eave
 +/- 24'-0" from finish floor to the roof slope mid-point



NORTH ELEVATION (FROM STREET)



EAST ELEVATION (FROM PLAZA)



EXTERIOR FINISH MATERIALS

- METAL, RUBBER, ASPHALT OR COMPOSITE ROOFING
- SOLAR SHINGLES OR ROOF-MOUNTED PV PANELS
- SEAMLESS METAL GUTTERS AND DOWNSPOUTS
- VARIETY OF HORIZONTAL, SHINGLE AND VERTICAL SIDING PROFILES
- STUCCO, PARGING, BRICK AND STONE VENEERS
- COMPOSITE CORBELS, BRACKETS, RAFTER TAILS AND DECORATIVE TRIM
- INSULATED DOUBLE-HUNG, CASEMENT AND FIXED WINDOWS WITH DIVIDED LITES
- INSULATED ENTRY AND PATIO DOORS
- COMPOSITE OR HEAVY TIMBER PORCH POSTS AND KNEE BRACES
- DECORATIVE RAILING AND GUARD RAIL SYSTEMS PER PLAN

Note of Intent:

The above list is not exhaustive, but representative of some materials intended for use. The exterior finish palette will include a selection of natural and synthetic products that meet the team's high standards for aesthetics, environmental sustainability, and low maintenance. Veridian at County Farms will endeavor to source 80% or more of wood from site harvested, salvaged, or FSC certified wood products. In addition, the project shall avoid products containing red list materials, such as PVC and VOCs, wherever feasible.

KEY MAP



SCALE: 1"=100'-0"
0 50 100 150 200 250 300

