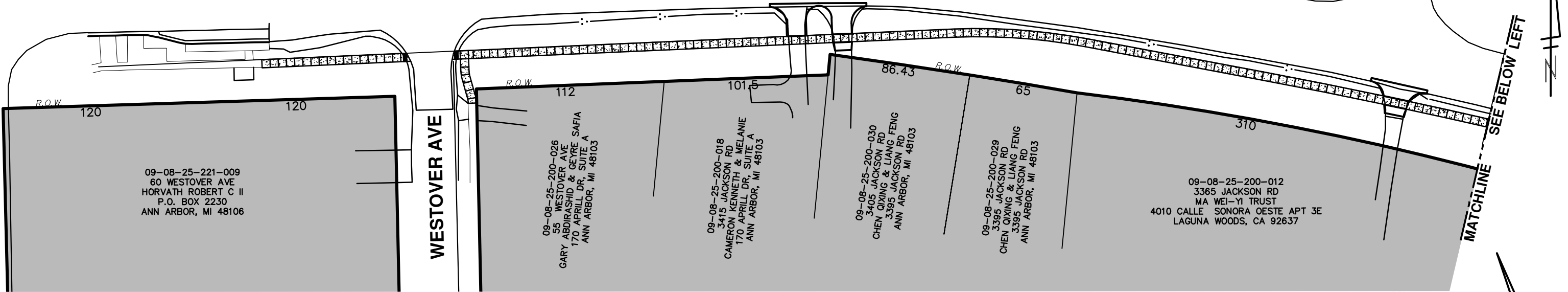


JACKSON RD - EAST BOUND

WAGNER RD

WESTOVER AVE

MATCHLINE  
SEE BELOW LEFT



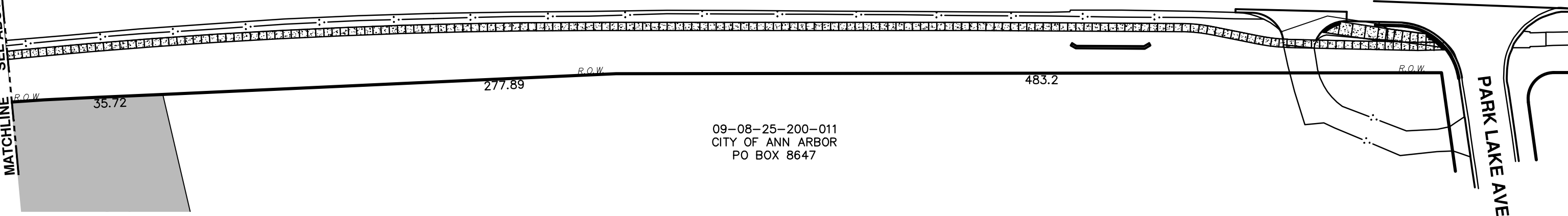
NOTE: TRUNCATION OF PARCELS IN NO WAY INDICATES A LIMITATION REGARDING PORTION OF LOT THAT BENEFITS FROM THE PROPOSED IMPROVEMENTS.

E BOUND I-94 EXIT RAMP

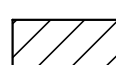

JACKSON RD - EAST BOUND

MATCHLINE  
SEE ABOVE RIGHT

PARK LAKE AVE



Legend:

-  CITY SHARE FUTURE RECOVERABLE (IMPROVEMENT CHARGES)
-  PROPERTY SHARE ASSESSABLE (LAND INSIDE CITY)



CITY OF ANN ARBOR  
PUBLIC SERVICES  
301 EAST HURON STREET  
P.O. BOX 8647  
ANN ARBOR, MI 48107-8647  
734-794-6410  
www.a2gov.org

PROPERTY INCLUDED IN  
SIDEWALK SPECIAL ASSESSMENT  
DISTRICT No.61

REV. NO.	DATE	DRAWN BY	CHECKED BY
<b>2019 SIDEWALK GAP ELIMINATION PROJECT SPECIAL ASSESSMENT DISTRIBUTION</b>			
DR. DPF	CH. MGN	DRAWING NO.	
SCALE 1" = 60'	DATE 3/9/2020	<b>2019-034</b>	