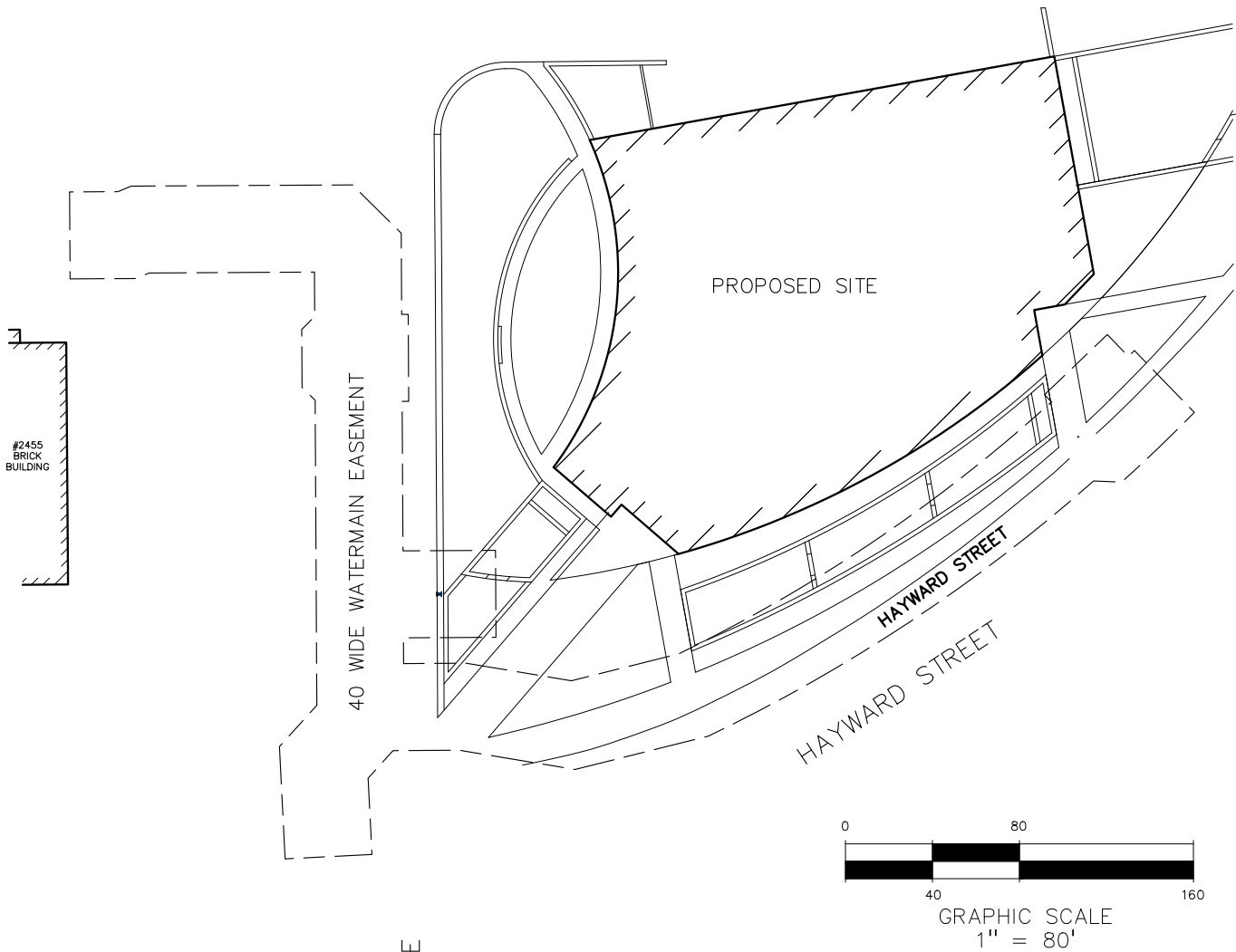


EXHIBIT B
40 FOOT WATER MAIN EASEMENT



LOCAL AREA SITE MAP

SITE ADDRESS:
2505 HAYWARD STREET
ANN ARBOR, MI. 48109-1340

Tax Parced ID:
09-09-22-400-021

REVISION: 2018-08-08 CORRECTIONS

No.	BY	CHK.	DESCRIPTION	DATE
1	DEC.	DEC.	CORRECTIONS	06-12-18
2	DEC.	DEC.	SECTION CORNER BASE	07-30-18

CAUTION!!
THE LOCATIONS AND ELEVATIONS OF EXISTING UNDERGROUND UTILITIES AS SHOWN ON THIS DRAWING ARE ONLY APPROXIMATE. NO GUARANTEE IS EITHER EXPRESSED OR IMPLIED AS TO THE COMPLETENESS OR ACCURACY THEREOF. THE CONTRACTOR SHALL BE EXCLUSIVELY RESPONSIBLE FOR DETERMINING THE EXACT UTILITY LOCATIONS AND ELEVATIONS PRIOR TO THE START OF CONSTRUCTION.
THIS DRAWING AND DESIGN ARE THE PROPERTY OF PROFESSIONAL ENGINEERING ASSOCIATES, INC. THEY ARE SUBMITTED ON THE CONDITION THAT THEY ARE NOT TO BE USED, REPRODUCED OR COPIED IN WHOLE OR IN PART, OR USED FOR FURNISHING INFORMATION TO OTHERS, WITHOUT THE PRIOR WRITTEN CONSENT OF PROFESSIONAL ENGINEERING ASSOCIATES, INC. ALL COMMON LAW RIGHTS OF COPYRIGHT AND OTHERWISE ARE HEREBY SPECIFICALLY RESERVED.
© 2017 PEA, INC.

CONSTRUCTION CONTRACTOR AGREES THAT IN ACCORDANCE WITH GENERALLY ACCEPTED CONSTRUCTION PRACTICES, CONSTRUCTION CONTRACTOR WILL BE REQUIRED TO ASSUME SOLE AND COMPLETE RESPONSIBILITY FOR JOB SITE CONDITIONS DURING THE COURSE OF CONSTRUCTION; THE PROJECT, INCLUDING SAFETY OF ALL PERSONS AND PROPERTY, THAT THIS REQUIREMENT SHALL BE MADE TO APPLY CONTINUOUSLY AND NOT BE LIMITED TO NORMAL WORKING HOURS, AND CONSTRUCTION CONTRACTOR FURTHER AGREES TO DEFEND, INDEMNIFY AND HOLD HARMLESS PROFESSIONAL ENGINEERS FROM ANY AND ALL LIABILITY, REAL OR ALLEGED, IN CONNECTION WITH THE PERFORMANCE OF WORK ON THIS PROJECT EXCEPTING LIABILITY ARISING FROM THE SOLE NEGLIGENCE OF THE DESIGN PROFESSIONAL.

3 FULL WORKING DAYS BEFORE YOU DIG CALL

811

Know what's below
Call before you dig

MISS DIG System, Inc.
1-800-482-7171 www.missdig.org
TOLL FREE

PEA, Inc.

2430 Rochester Ct., Ste. 100
Troy, MI 48063-1872
t: 248.689.9090
f: 248.689.1044
www.peainc.com

HARLEY ELLIS DEVEREAUX
26913 NORTHWESTERN HIGHWAY
SOUTHFIELD, MICHIGAN 48033

**40 FT. WATERMAIN EASEMENT
UM ROBOTICS**

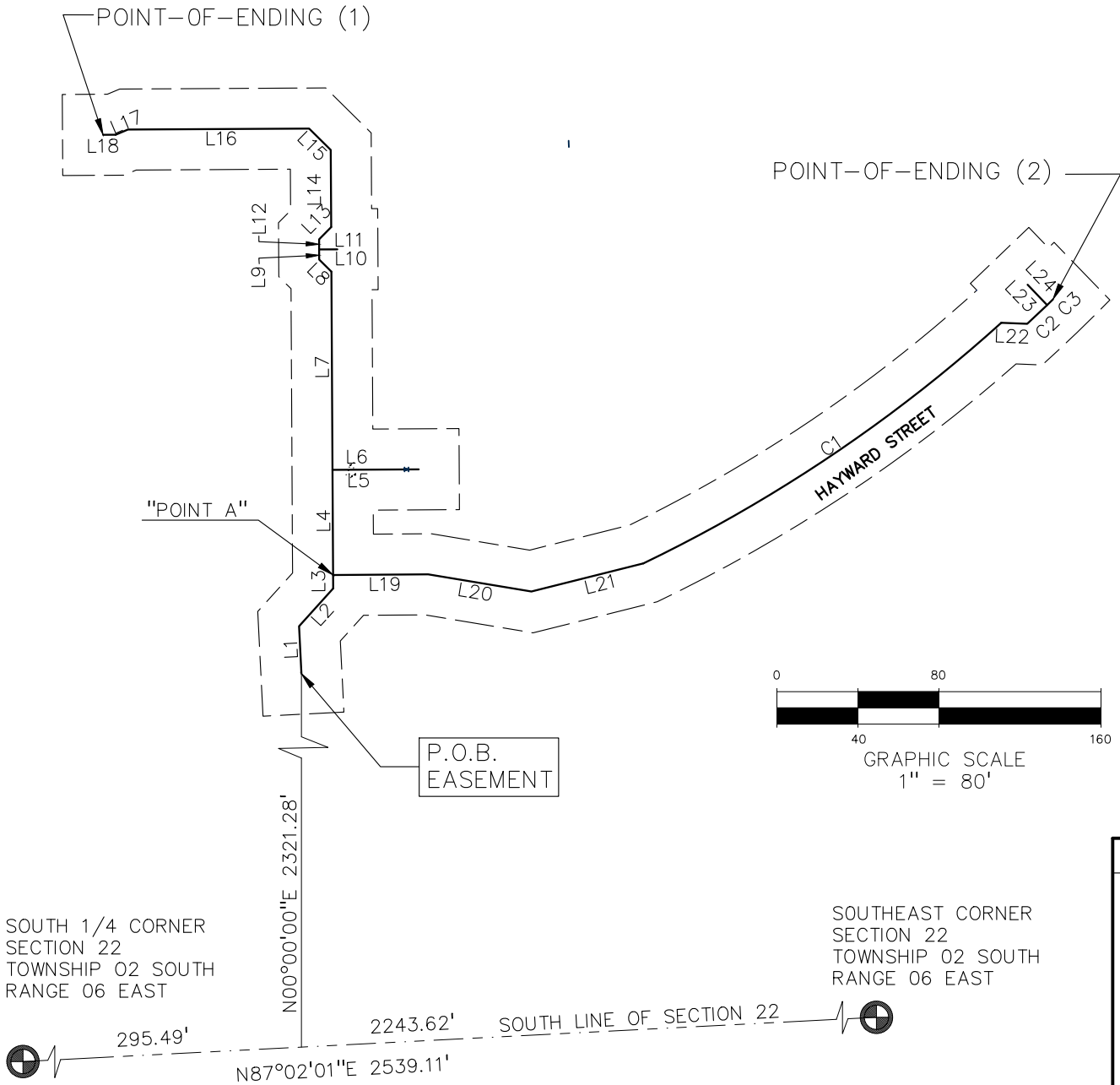
PART OF THE SE 1/4 OF SECTION 22, T. 02 S., R. 06 E.,
ANN ARBOR CHARTER TWP., WASHTENAW COUNTY, MICHIGAN

DES.	DN.	DEC	SUR.	DEC	P.M.	SS
------	-----	-----	------	-----	------	----

S:\PROJECTS\2015\2015105 HED UM-ROBOTICS LAB-TDS\SURVEY-DEPT\2015-105 BND\dwg\2015-105 WM ESMT.dwg

ORIGINAL ISSUE DATE: JUNE 04, 2018
PEA JOB NO. 2015-105
SCALE: 1" = 80'
DRAWING NUMBER: WM-ESMT-1 OF 3

EXHIBIT B
40 FOOT WATER MAIN EASEMENT



SOUTH 1/4 CORNER
SECTION 22
TOWNSHIP 02 SOUTH
RANGE 06 EAST

SOUTHEAST CORNER
SECTION 22
TOWNSHIP 02 SOUTH
RANGE 06 EAST

REVISION: 2018-08-08 CORRECTIONS

No.	BY	DATE	DESCRIPTION
1	DEC	06-12-18	SECTION CORNER BASE
2	DEC	07-30-18	SECTION CORNER BASE

CAUTION!!
THE LOCATIONS AND ELEVATIONS OF EXISTING UNDERGROUND UTILITIES AS SHOWN ON THIS DRAWING ARE ONLY APPROXIMATE. NO GUARANTEE IS EITHER EXPRESSED OR IMPLIED AS TO THE COMPLETENESS OR ACCURACY THEREOF. THE CONTRACTOR SHALL BE EXCLUSIVELY RESPONSIBLE FOR DETERMINING THE EXACT UTILITY LOCATIONS AND ELEVATIONS PRIOR TO THE START OF CONSTRUCTION. THIS DRAWING AND DESIGN ARE THE PROPERTY OF PROFESSIONAL ENGINEERING ASSOCIATES, INC. THEY ARE SUBMITTED ON THE CONDITION THAT THEY ARE NOT TO BE REPRODUCED OR COPIED IN WHOLE OR IN PART, OR USED FOR FURNISHING INFORMATION TO OTHERS, WITHOUT THE PRIOR WRITTEN CONSENT OF PROFESSIONAL ENGINEERING ASSOCIATES, INC. ALL COMMON LAW RIGHTS OF COPYRIGHT AND OTHERWISE ARE HEREBY SPECIFICALLY RESERVED. © 2017 PEA, INC.

CONSTRUCTION CONTRACTOR AGREES THAT IN ACCORDANCE WITH GENERALLY ACCEPTED CONSTRUCTION PRACTICES, CONSTRUCTION CONTRACTOR WILL BE REQUIRED TO ASSUME SOLE AND COMPLETE RESPONSIBILITY FOR JOB SITE CONDITIONS DURING THE COURSE OF CONSTRUCTION OF THE PROJECT, INCLUDING SAFETY OF ALL PERSONS AND PROPERTY. THAT THIS REQUIREMENT SHALL BE MADE TO APPLY CONTINUOUSLY AND NOT BE LIMITED TO NORMAL WORKING HOURS, AND CONSTRUCTION CONTRACTOR FURTHER AGREES TO DEFEND, INDEMNIFY AND HOLD DESIGN PROFESSIONAL HARMLESS FROM ANY AND ALL LIABILITY, REAL OR ALLEGED, IN CONNECTION WITH THE PERFORMANCE OF WORK ON THIS PROJECT EXCEPTING LIABILITY ARISING FROM THE SOLE NEGLIGENCE OF THE DESIGN PROFESSIONAL.

3 FULL WORKING DAYS BEFORE YOU DIG CALL

811

Know what's below
Call before you dig

MISS DIG System, Inc.
1-800-482-7171 www.missdig.org

PEA

PEA, Inc.
2430 Rochester Ct., Ste. 100
Troy, MI 48063-1872
t: 248.689.9090
f: 248.689.1044
www.peainc.com

HARLEY ELLIS DEVEREAUX
26913 NORTHWESTERN HIGHWAY
SOUTHFIELD, MICHIGAN 48033

**40 FT. WATERMAIN EASEMENT
UM ROBOTICS**

PART OF THE SE 1/4 OF SECTION 22, T. 02 S., R. 06 E.,
ANN ARBOR CHARTER TWP., WASHTENAW COUNTY, MICHIGAN

DES.	DN.	DEC	SUR.	DEC	P.M.	SS
S:\PROJECTS\2015\2015105 HED UM-ROBOTICS LAB-TDS\SURVEY-DEPT\2015-105 BND\dwg\2015-105 WM ESMT.dwg						

ORIGINAL ISSUE DATE:	JUNE 04, 2018
PEA JOB NO.	2015-105
SCALE:	1" = 80'
DRAWING NUMBER:	WM-ESMT-2 OF 3

EXHIBIT B 40 FOOT WATER MAIN EASEMENT

LEGAL DESCRIPTION: 40 FOOT WIDE EASEMENT

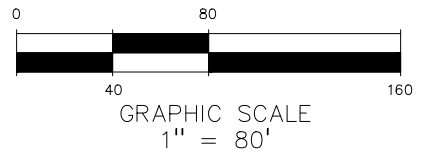
Part of the Southeast 1/4 of Section 22, Township 02 South, Range 06 East, Washtenaw County, Michigan:

Commencing from the South 1/4 corner along the south line of said Section 22: Thence N87°02'01"E, 295.49 feet; thence N00°00'00"E, 2321.28 feet to the Point-of-Beginning and the centerline of a 40 foot wide easement: Thence along the centerline of said 40 foot wide easement, N02°52'45"W, 23.43 feet, thence N42°07'15"E, 25.11 feet; thence N00°18'49"W, 6.66 feet to Point A; thence N00°18'49"W, 51.90 feet; thence N89°41'11"E, 42.54 feet; thence S89°41'11"W, 42.54 feet; thence N00°18'49"W, 97.78 feet; thence N45°18'49"W, 8.49 feet; thence N00°18'49"W, 5.00 feet; thence N89°41'11"E, 9.00 feet; thence S89°41'11"W, 9.00 feet; thence N00°18'49"W, 5.00 feet; thence N44°41'11"E, 8.49 feet; thence N00°18'49"W, 38.08 feet; thence N45°18'49"W, 15.00 feet; thence S89°41'11"W, 89.46 feet; S67°11'11"W, 6.57 feet; thence S89°41'11"W, 6.24 feet to Point-of-Ending (1); Thence continuing from said Point A, N89°35'47"E, 46.93 feet; thence S80°33'49"E, 51.66 feet; thence N75°56'11"E, 57.00 feet to a non-tangent curve; thence along a curve to the left an arc distance 213.61 feet, radius 750.00 feet; chord bearing N56°05'51"E, 212.88 feet to a non-tangent line; thence S87°45'13"E, 12.81 feet to a non-tangent curve; thence along a curve to the left an arc distance 13.50 feet, radius 759.00 feet, chord bearing N46°44'13"E, 13.50 feet to a non-tangent line; thence N43°46'21"W, 13.91 feet; thence S43°46'21"E, 13.91 feet to a non-tangent curve; thence along a curve to the left an arc distance 4.00 feet, radius 759.00 feet, chord bearing N46°04'35"E, 4.00 feet to Point-of-Ending (2).

Curve Table					
Curve #	Length	Radius	Delta	CH. BRG.	Chord
C1	213.61'	750.00'	16°19'06"	N56°05'51"E	212.88'
C2	13.50'	759.00'	1°01'09"	N46°44'13"E	13.50'
C3	4.00'	759.00'	0°18'07"	N46°04'35"E	4.00'

Line Table		
Line #	Direction	Length
L1	N02°52'45"W	23.43'
L2	N42°07'15"E	25.11'
L3	N00°18'49"W	6.66'
L4	N00°18'49"W	51.90'
L5	N89°41'11"E	42.54'
L6	S89°41'11"W	42.54'
L7	N00°18'49"W	97.78'
L8	N45°18'49"W	8.49'
L9	N00°18'49"W	5.00'
L10	N89°41'11"E	9.00'
L11	S89°41'11"W	9.00'
L12	N00°18'49"W	5.00'

Line Table		
Line #	Direction	Length
L13	N44°41'11"E	8.49'
L14	N00°18'49"W	38.08'
L15	N45°18'49"W	15.00'
L16	S89°41'11"W	89.46'
L17	S67°11'11"W	6.57'
L18	S89°41'11"W	6.24'
L19	N89°35'47"E	46.93'
L20	S80°33'49"E	51.66'
L21	N75°56'11"E	57.00'
L22	S87°45'13"E	12.81'
L23	N43°46'21"W	13.91'
L24	S43°46'21"E	13.91'



BEARINGS AND COORDINATES SHOWN ARE BASED ON THE MICHIGAN STATE PLANE COORDINATE SYSTEM (ZONE 2113) AS DETERMINED BY GPS OBSERVATIONS AND THE MICHIGAN SPATIAL REFERENCE NETWORK.

REVISIONS			
No.	BY	CHK. DESCRIPTION	DATE
2	DEC	SECTION CORNER BASE	07-30-18
1	DEC	CORRECTIONS	06-12-18

REVISION: 2018-08-08 CORRECTIONS

CAUTION!!
THE LOCATIONS AND ELEVATIONS OF EXISTING UNDERGROUND UTILITIES AS SHOWN ON THIS DRAWING ARE ONLY APPROXIMATE. NO GUARANTEE IS EITHER EXPRESSED OR IMPLIED AS TO THE COMPLETENESS OR ACCURACY THEREOF. THE CONTRACTOR SHALL BE EXCLUSIVELY RESPONSIBLE FOR DETERMINING THE EXACT UTILITY LOCATIONS AND ELEVATIONS PRIOR TO THE START OF CONSTRUCTION.
THIS DRAWING AND DESIGN ARE THE PROPERTY OF PROFESSIONAL ENGINEERING ASSOCIATES, INC. THEY ARE SUBMITTED ON THE CONDITION THAT THEY ARE NOT TO BE USED, REPRODUCED, OR COPIED, IN WHOLE OR IN PART, OR USED FOR FURNISHING INFORMATION TO OTHERS, WITHOUT THE PRIOR WRITTEN CONSENT OF PROFESSIONAL ENGINEERING ASSOCIATES, INC. ALL COMMON LAW RIGHTS OF COPYRIGHT AND OTHERWISE ARE HEREBY SPECIFICALLY RESERVED.
© 2017 PEA, INC.

CONSTRUCTION CONTRACTOR AGREES THAT IN ACCORDANCE WITH GENERALLY ACCEPTED CONSTRUCTION PRACTICES, CONSTRUCTION CONTRACTOR WILL BE REQUIRED TO ASSUME THE FULL AND COMPLETE RESPONSIBILITY FOR JOB SITE CONDITIONS DURING THE COURSE AND PROGRESS OF THE PROJECT, INCLUDING SAFETY OF ALL PERSONS AND PROPERTY. THAT THIS REQUIREMENT SHALL BE MADE TO APPLY CONTINUOUSLY AND NOT BE LIMITED TO NORMAL WORKING HOURS, AND CONSTRUCTION CONTRACTOR FURTHER AGREES TO DEFEND, INDEMNIFY AND HOLD HARMLESS PROFESSIONAL ENGINEERING ASSOCIATES, INC. IN CONNECTION WITH THE PERFORMANCE OF WORK OR IN CONNECTION WITH THE PROJECT EXCEPTING LIABILITY ARISING FROM THE SOLE NEGLIGENCE OF THE DESIGN PROFESSIONAL.

3 FULL WORKING DAYS BEFORE YOU DIG CALL

811

Know what's below
Call before you dig

MISS DIG System, Inc.
1-800-482-7171 www.missdig.org
TOLL FREE

PEA

PEA, Inc.
2430 Rochester Ct., Ste. 100
Troy, MI 48063-1872
t: 248.889.9090
f: 248.889.1044
www.peainc.com

HARLEY ELLIS DEVEREAUX
26913 NORTHWESTERN HIGHWAY
SOUTHFIELD, MICHIGAN 48033

**40 FT. WATERMAIN EASEMENT
UM ROBOTICS**

PART OF THE SE 1/4 OF SECTION 22, T. 02 S., R. 06 E.,
ANN ARBOR CHARTER TWP., WASHTENAW COUNTY, MICHIGAN

DES.	DN.	DEC	SUR.	DEC	P.M.	SS
S:\PROJECTS\2015\2015105 HED UM-ROBOTICS LAB-TDS\SURVEY-DEPT\2015-105 BND\dwg\2015-105 WM ESMT.dwg						

ORIGINAL ISSUE DATE: JUNE 04, 2018
PEA JOB NO. 2015-105
SCALE: 1" = 80'
DRAWING NUMBER: WM-ESMT-3 OF 3



Supplemental Drawing

26913 Northwestern Hwy
Suite 200
Southfield, Michigan
48033-3476 | USA

(tel) 248.262.1500

www.hed.design

Copyright © 2019

M-Air Lab	Project No. 2016-01033-000	Date 01/22/19	Drawing Number
Water Main Easement	Issue		From Drawing

EXHIBIT C

