

SURVEY OF A STRIP OF LAND LOCATED IN THE SE 1/4  
OF SECTION 28, T2S, R6E, CITY OF ANN ARBOR,  
WASHTENAW COUNTY, MICHIGAN



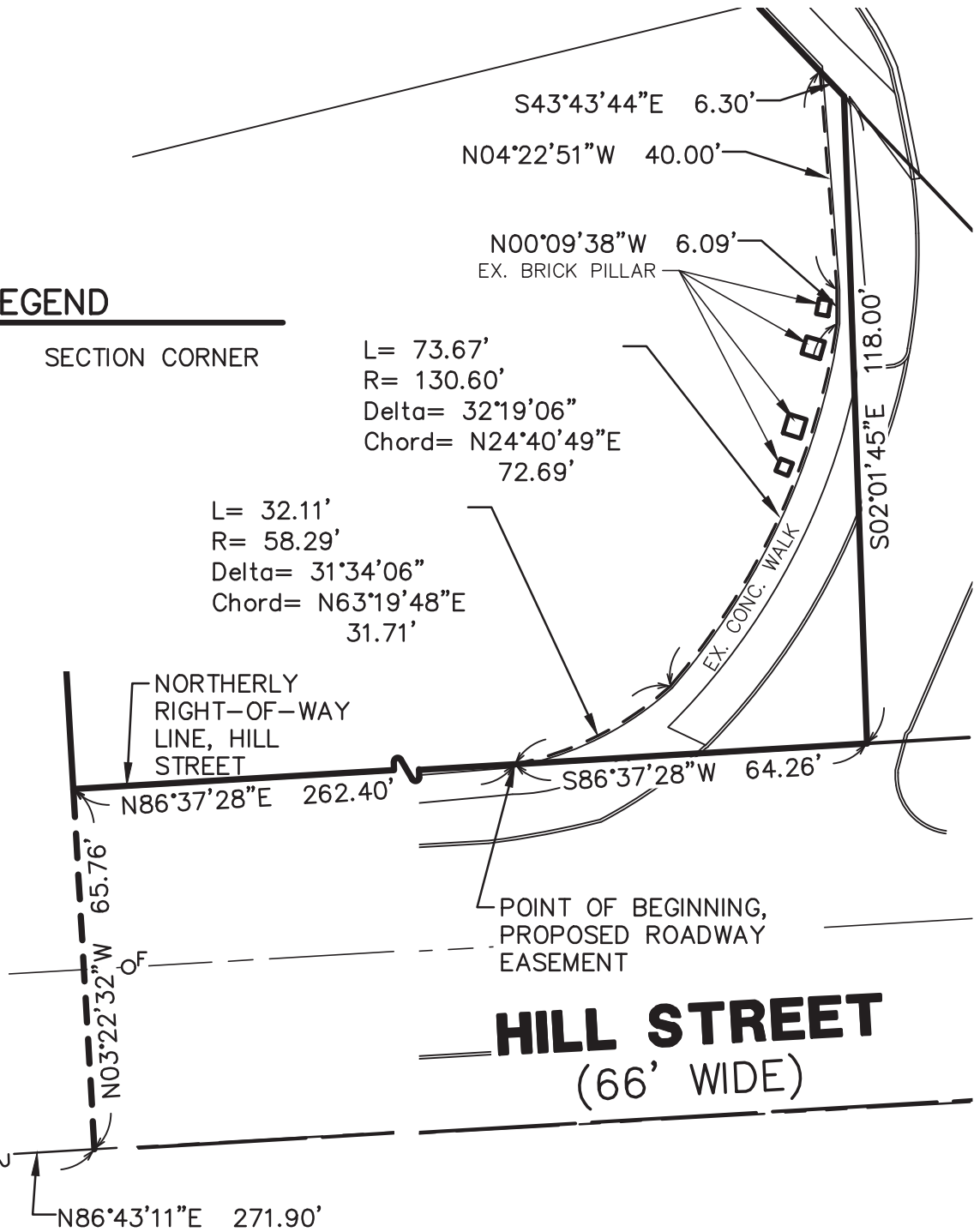
LEGEND



SECTION CORNER

L= 73.67'  
R= 130.60'  
Delta= 32°19'06"  
Chord= N24°40'49"E  
72.69'

L= 32.11'  
R= 58.29'  
Delta= 31°34'06"  
Chord= N63°19'48"E  
31.71'



SOUTH 1/4 COR.,  
SECTION 28,  
T2S, R6E



M I D W E S T E R N  
C O N S U L T I N G

3815 Plaza Drive Ann Arbor, Michigan 48108  
(734) 995-0200 • www.midwesternconsulting.com  
Land Development • Land Survey • Institutional • Municipal  
Wireless Communications • Transportation • Landfill Services

EXHIBIT A  
PROPOSED ROADWAY EASEMENT

DATE: 08/01/18

JOB NO.: **18012**

SCALE: 1" = 30'



SHEET 3 OF 4