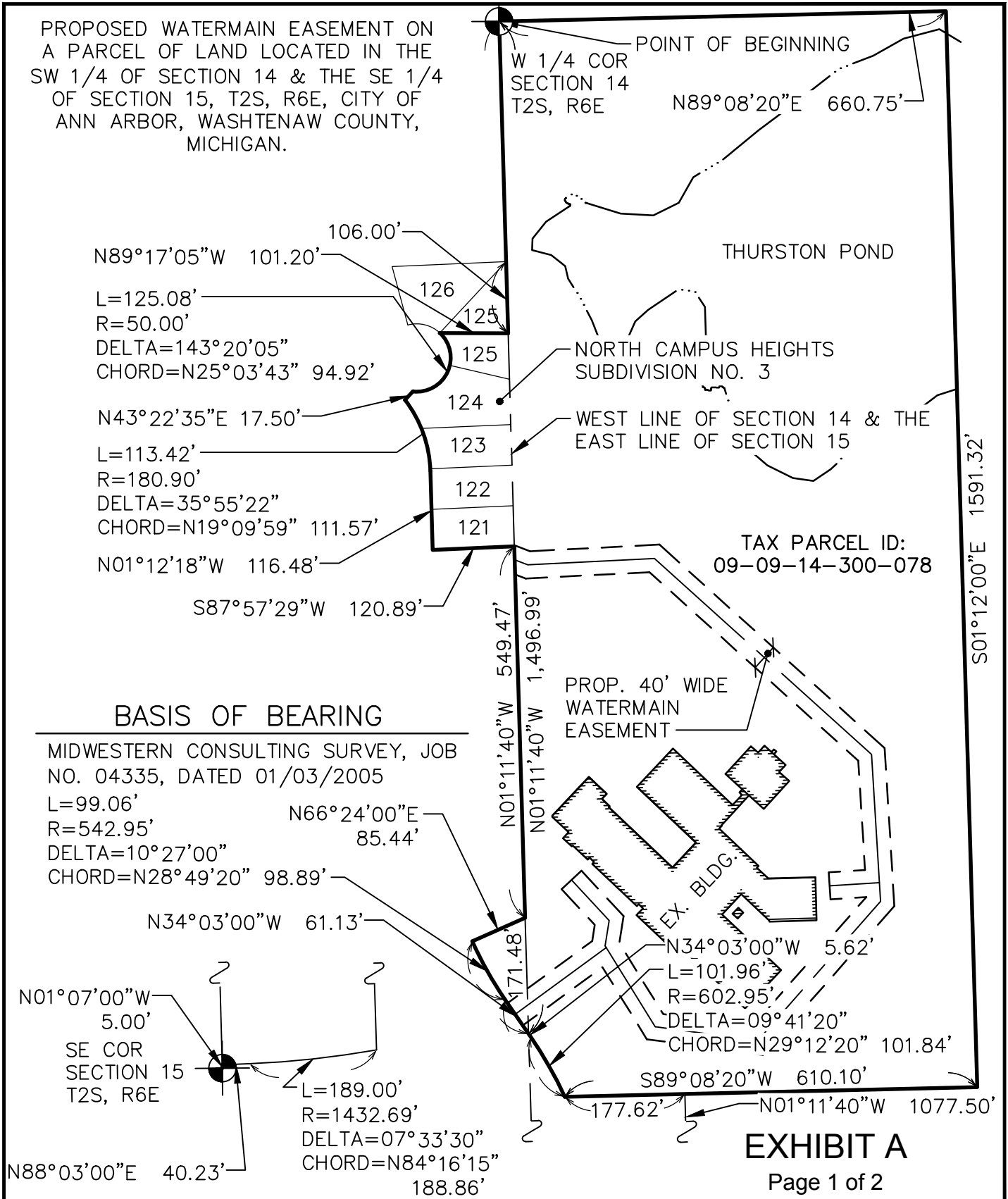


ANN ARBOR SCHOOLS—THURSTON ELEMENTARY—OVERALL PARCEL

PROPOSED WATERMAIN EASEMENT ON A PARCEL OF LAND LOCATED IN THE SW 1/4 OF SECTION 14 & THE SE 1/4 OF SECTION 15, T2S, R6E, CITY OF ANN ARBOR, WASHTENAW COUNTY, MICHIGAN.



MIDWESTERN CONSULTING

3815 Plaza Drive Ann Arbor, Michigan 48108
 (734) 995-0200 • www.midwesternconsulting.com
 Land Development • Land Survey • Institutional • Municipal
 Wireless Communications • Transportation • Landfill Services

THURSTON ELEMENTARY PROPOSED WATERMAIN EASEMENT

DATE: 02/07/18 JOB NO.: **17142**

SCALE: 1" = 200'



SHEET

ANN ARBOR SCHOOLS—THURSTON ELEMENTARY—PROP. EASEMENT

PROPOSED WATERMAIN EASEMENT ON PARCEL OF LAND LOCATED IN THE SW 1/4 OF SECTION 14 AND THE SE 1/4 OF SECTION 15, T2S, R6E, CITY OF ANN ARBOR, WASHTENAW COUNTY, MICHIGAN.

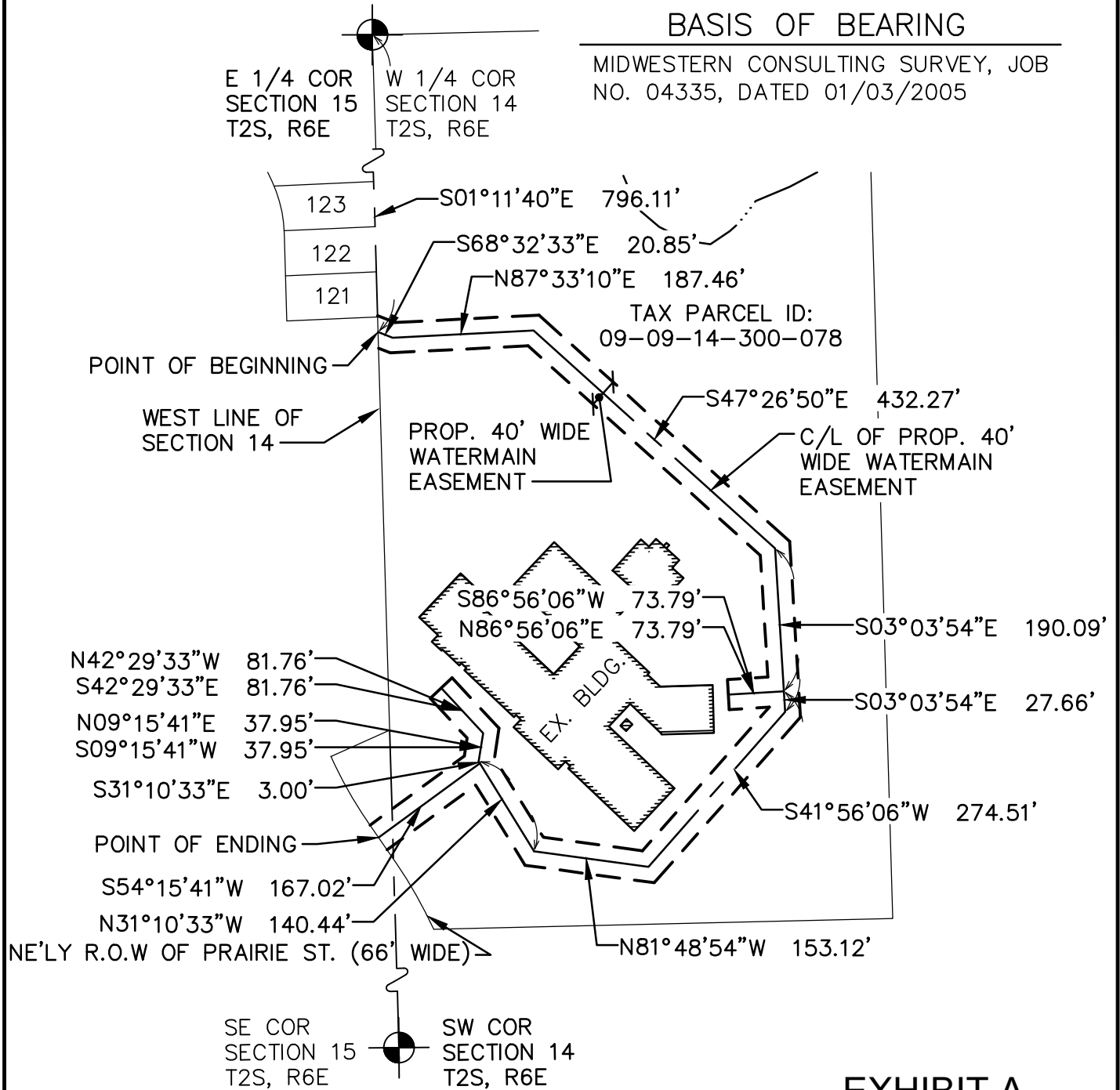


EXHIBIT A
Page 2 of 2



M I D W E S T E R N
C O N S U L T I N G

3815 Plaza Drive Ann Arbor, Michigan 48108
 (734) 995-0200 • www.midwesternconsulting.com
 Land Development • Land Survey • Institutional • Municipal
 Wireless Communications • Transportation • Landfill Services

THURSTON ELEMENTARY
PROPOSED WATERMAIN EASEMENT

DATE: 02/07/18

JOB NO.: **17142**

SCALE: 1" = 200'



SHEET