



GRAND RAPIDS
600 AIS Drive Southwest
Grand Rapids, MI 49548
Telephone: (616) 538-2400

SAGINAW
4600 AIS Drive
Bridgeport, MI 48722
Telephone: (989) 777-0890

TRAVERSE CITY
8300 M-72 East
Williamsburg, MI 49690
Telephone: (231) 267-9513

LANSING
3600 North Grand River Avenue
Lansing, MI 48906
Telephone: (517) 321-8000

RICHMOND
65809 Gratiot Avenue
Lenox, MI 48050
Telephone: (686) 727-7311

WEST DETROIT
56555 Pontiac Trail
New Hudson, MI 48185
Telephone: (248) 437-8121

Mr. Scott Bowling
City of Ann Arbor
4251 Stone School Road
Ann Arbor, MI 48108

April 24, 2018

Re: State of Michigan MiDeal Pricing for New Etnyre 55 Ton Lowboy Trailer

Dear Mr. Bowling:

AIS Construction Equipment Corp. is pleased to provide you with the following pricing for a new Etnyre RTN55ETD3 55 Ton Trailer.

Etnyre 55 Ton Trailer with specifications as outlined in the attached Quotation Sheet:

List Price:	\$ 83,820.00
Less State Contract 7% Discount:	(\$ 5,867.40)
Total:	\$ 77,952.60

Pricing includes title for trailer and delivery to your Ann Arbor facility.

Please let me know if you have any questions or need any additional information. We look forward to continuing to assist you with your heavy construction equipment needs.

Sincerely,

Chris Robinson
Governmental Sales Manager



Quotation Sheet

Etnyre

Serial Number:
 Date Order Rec'd:
 P.O. Number:
 Delivery: 120 to 150 days after receipt of order

Bid Opening:
 Terms: Net 30 days

Quote: 0032808-03
 Date: 04/23/2018
 By: Rob Jones
 Territory: 42

Sold To

AIS CONSTRUCTION EQPT CORP
 56555 PONTIAC TRAIL

NEW HUDSON, MI 48165

Attn: Chris Robinson
 Phone: 248-437-8121 Fax: 248-437-9750
 Email: crobins@aisequip.com

Customer

City of Ann Arbor

Attn:
 Phone:
 Email:

Ship To

Ship Type:

HYDRAULIC DETACHABLE

		Qty	Price
MODEL	RTN55ETD3 TRAILER	1	74,185
TONS CAPACITY	55 TONS DISTRIBUTED - 50 TONS IN ANY 16'	1	0
CONSTRUCTION	(4) I-BEAM, CAMBERED, T-1 STEEL	1	0
CUSTOM/PAVER SPECIAL	TAPERED FRONT BEAMS (8-3*8" DEEP)	1	2,000
PLATFORM WIDTH	8'-6"	1	0
PLATFORM LENGTH	24'-4"	1	0
PLATFORM HEIGHT/ROAD CLEARANCE	22"/6"	1	0
CROSSMEMBER SPACING	ON 20" CENTERS	1	0
AUXILIARY CROSSMEMBERS	OUTSIDE OF MAIN BEAMS BETWEEN	1	1,265
FRONT FOLDING RAMPS	41" LONG-WOOD FILLED-ADJUSTABLE	1	0
FRAME REINFORCEMENT	FOR 4TH FLIP/REMOVABLE AXLE	1	0
TOP FLANGE REINFORCEMENT	OUTSIDE OF OUTER BEAMS ONLY	1	0
BUCKET TROUGH	LAST 3 CROSSMEMBERS IN DECK	1	0
HYDRAULIC SYSTEM	FROM TRACTOR WET LINE	1	0
GOOSENECK	NON-GROUND ENGAGING REMOVABLE-HI LIFT	1	0
GOOSENECK SUPPORT CYLINDER	HYDRAULIC	1	0
GOOSENECK CONNECTION	PIN & STIRRUP TYPE W/VERTICAL AIR LOCK PIN	1	0
SWING CLEARANCE	96"	1	480
FIFTH WHEEL HEIGHT	48"-50"-52"-54"-56" LOADED (ADJUSTABLE)	1	0
1/8" ALUMINUM TOP COVER	OVER GOOSENECK AREA	1	0
HINGED AND LOCKABLE COVER	AT REAR OF GOOSENECK	1	400
CHAIN AND BINDER RACK	W/ BASE PLATE AT REAR OF GOOSENECK	1	295
AIR BRAKES	16.5" X 7" W/AUTO SLACKS & OUTBOARD DRUMS	1	0
ANTI-LOCK BRAKES	NONE (TRAILER GVWR EXCEEDS 120,000#)	1	0
SPRING BRAKES	ON ALL AXLES	2	470
AXLES	(3) 22,500#, 5/8" WALL	1	0
TIRES	(12) 255/70R22.5 (H)	1	0
WHEELS	STEEL DISC, 10-HOLE, HUB PILOTED, 8.25" X 22.5"	1	0
SUSPENSION	AIR RIDE W/ 50" AXLE SPACING	1	0
SUSPENSION	+3/-3 HEIGHT CONTROL, AUTO/MANUAL	1	0
MANUAL EXHAUST VALVE	ON ALL AXLES	1	0
LIGHTS	L.E.D. TRUCK-LITE RUBBER SEALED SYSTEM	1	0
LASH RINGS	(18) TOTAL, 9-PER SIDE, BENT STYLE	6	270
ADDITIONAL LASH RINGS	(1) ON EACH BOLSTER END	4	180
EXTENSION BRACKETS (OUTRIGGERS)	12" SWING/REMOVABLE W/DBL HOOK-ON FRONT	1	0
DECKING	1-1/2" APITONG (FULL WIDTH)	1	800
PAINT	GLOSS BLACK (2-PART URETHANE) STEEL PARTS TO MATCH PAINT COLOR	1	0
BOOMWELL	OPEN BOTTOM W/EXTRA LOW 1ST CROSSMEMBER (1/4" COVER PLATE BOLT-IN)	1	500
TRACTION BARS	ON FRONT & REAR SLOPES	1	0

Quotation Sheet

Etnyre

Serial Number:
Date Order Rec'd:
P.O. Number:
Delivery: 120 to 150 days after receipt of order

Bid Opening:
Terms: Net 30 days

Quote: 0032808-03
Date: 04/23/2018
By: Rob Jones
Territory: 42

CHAIN HOOK & FLAG HOLDER SLOTS	ON BOLSTERS	1	0
WHEEL WELL COVERS	1/4" FLOORPLATE, ONE PIECE OVER TIRES ONLY, BOLT-ON	1	2,975

Remarks:

ESTIMATED TRAILER WEIGHT: 22,785# (+/-5%)

List Price : 83,820

Specification Sheet

Etnyre

Quote : 0032808-03

Custom Built For:

Date : 04/23/2018

City of Ann Arbor

HYDRAULIC DETACHABLE GOOSENECK	
MODEL	RTN55ETD3 TRAILER
TONS CAPACITY	55 TONS DISTRIBUTED - 50 TONS IN ANY 16'
CONSTRUCTION	(4) I-BEAM, CAMBERED, T-1 STEEL
CUSTOM/PAVER SPECIAL	TAPERED FRONT BEAMS (8-3*8" DEEP)
PLATFORM WIDTH	8'-6"
PLATFORM LENGTH	24'-4"
PLATFORM HEIGHT/ROAD CLEARANCE	22" / 6"
CROSSMEMBER SPACING	ON 20" CENTERS
AUXILIARY CROSSMEMBERS	OUTSIDE OF MAIN BEAMS BETWEEN CROSSMEMBERS
FRONT FOLDING RAMPS	41" LONG-WOOD FILLED-ADJUSTABLE
FRAME REINFORCEMENT	FOR 4TH FLIP/REMOVABLE AXLE
TOP FLANGE REINFORCEMENT	OUTSIDE OF OUTER BEAMS ONLY
BUCKET TROUGH	LAST 3 CROSSMEMBERS IN DECK
HYDRAULIC SYSTEM	FROM TRACTOR WET LINE
GOOSENECK	NON-GROUND ENGAGING REMOVABLE-HI LIFT
GOOSENECK SUPPORT CYLINDER	HYDRAULIC
GOOSENECK CONNECTION	PIN & STIRRUP TYPE W/VERTICAL AIR LOCK PIN
SWING CLEARANCE	96"
FIFTH WHEEL HEIGHT	48"-50"-52"-54"-56" LOADED (ADJUSTABLE)
1/8" ALUMINUM TOP COVER	OVER GOOSENECK AREA
HINGED AND LOCKABLE COVER	AT REAR OF GOOSENECK
CHAIN AND BINDER RACK	W/BASE PLATE AT REAR OF GOOSENECK
AIR BRAKES	16.5" X 7" W/AUTO SLACKS & OUTBOARD DRUMS
ANTI-LOCK BRAKES	NONE (TRAILER GVWR EXCEEDS 120,000#)
SPRING BRAKES	ON ALL AXLES
AXLES	(3) 22,500#, 5/8" WALL

Etnyre

Quote : 0032808-03

Date : 04/23/2018

Specification Sheet

Custom Built For:

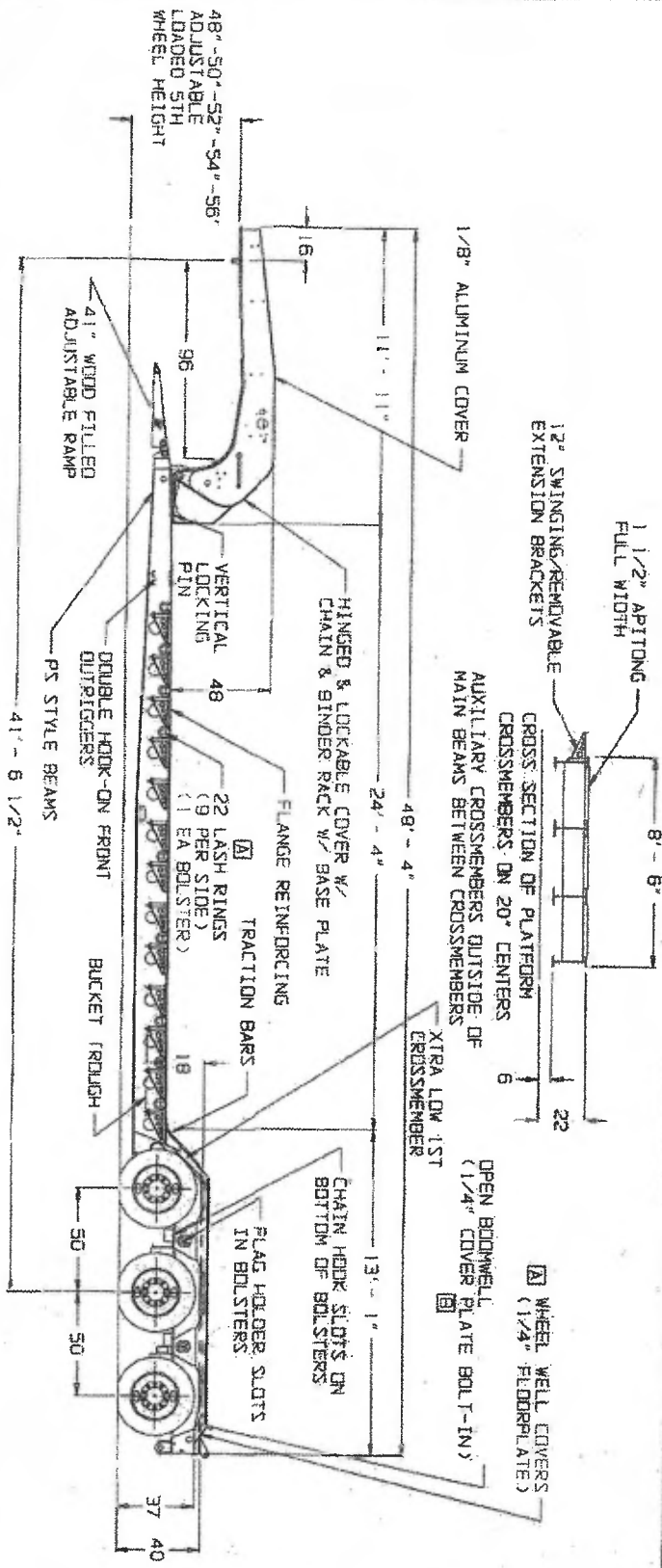
City of Ann Arbor

TIRES	(12) 255/70R22.5 (H)
WHEELS	STEEL DISC, 10-HOLE, HUB PILOTED, 8.25" X 22.5"
SUSPENSION	AIR RIDE W/ 50" AXLE SPACING
SUSPENSION	+3/-3 HEIGHT CONTROL, AUTO/MANUAL
MANUAL EXHAUST VALVE	ON ALL AXLES
LIGHTS	L.E.D. TRUCK-LITE RUBBER SEALED SYSTEM
LASH RINGS	(18) TOTAL, 9-PER SIDE, BENT STYLE
ADDITIONAL LASH RINGS	(1) ON EACH BOLSTER END
EXTENSION BRACKETS (OUTRIGGERS)	12" SWING/REMOVABLE W/DBL HOOK-ON FRONT
DECKING	1-1/2" APITONG (FULL WIDTH)
PAINT	GLOSS BLACK (2-PART URETHANE) STEEL PARTS TO MATCH PAINT COLOR
BOOMWELL	OPEN BOTTOM W/EXTRA LOW 1ST CROSSMEMBER (1/4" COVER PLATE BOLT-IN)
TRACTION BARS	ON FRONT & REAR SLOPES
CHAIN HOOK & FLAG HOLDER SLOTS	ON BOLSTERS
WHEEL WELL COVERS	1/4" FLOORPLATE, ONE PIECE OVER TIRES ONLY, BOLT-ON

DEALER/CUSTOMER APPROVAL _____
 A1S CONSTRUCTION EDPT CURP/ CITY OF ANN ARBOR

DATE _____

REVISIONS		
REV	DESCRIPTION	DATE
A	ADDED WHEEL WELL COVERS	3-21-18 RJ
B	ADDED SPRING BRACKETS, BOTTOMWELL PLATE	4-17-18 RJ
C	ADDED LASH RINGS	4-23-18 RJ



50 TONS EVENLY DISTRIBUTED
 50 TONS IN ANY 16'
 FRAME REINFORCEMENT
 FOR 4TH AXLE
 TRACTION BARS
 ON FRONT SLOPE
 WET LINE OPERATION

255/70R22.5 (H) TIRES
 STEEL DISC WHEELS
 AIR RIDE SUSPENSION
 ETNYRE MANUAL (+3/-3)
 MANUAL EXHAUST VALVE
 16 1/2" X 7" AIR BRAKES
 (3) 22 500# 5/8" WALL AXLES
 SPRING BRAKES ON ALL AXLES

PAINT: GLOSS BLACK
 L.E.D. LIGHTS

DRAWING IS FOR ILLUSTRATIVE PURPOSES ONLY. ALL WEIGHTS AND DIMENSIONS ARE APPROXIMATE. TRAILER IS SHOWN IN FULLY LOADED CONDITION. PLATFORM HEIGHTS WILL INCREASE IF LOADED LESS THAN FULL CAPACITY.

GENERAL NOTES: REMOVE ALL BURRS BREAK SHARP EDGES MINIMUM BEND RAD. UNLESS SPECIFIED BEND RELIEF SHOP OPTION		OPTR _____ RJ SALES RUDOS _____ ENGR _____ APPD. _____	TOLERANCE UNLESS SPECIFIED FRACTIONAL ± 1/32 DECIMAL X ± .03 X.X ± .010 ANGLES ± 30°	DWG. DRAWING NO. RTN-11222	REV C
FINISH CHART		DRAWING TITLE RINSSETD3		SCALE NONE	DATE 3-8-18
SER. NO. _____ SIM. TO: RTN-9899		E.D. ETNYRE & CO. OREGON, IL. 61061		DATE 3-8-18	SHEET 1 OF 1