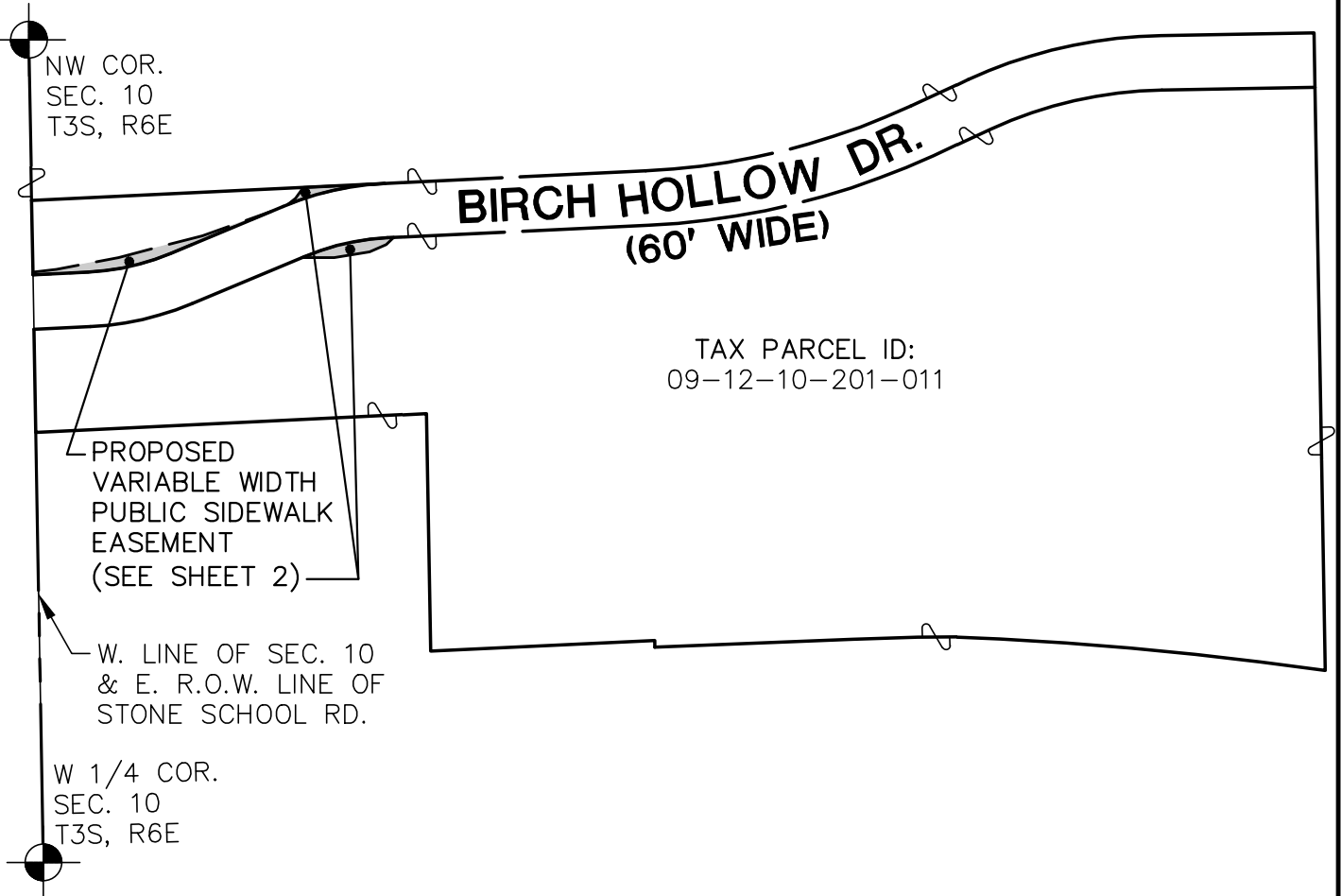


PROPOSED VARIABLE WIDTH PUBLIC SIDEWALK EASEMENT

BASIS OF BEARINGS

LIBERTY TITLE AGENCY, COMMITMENT NO. M95036,
REVISION NO. 4, DATED: NOVEMBER 22, 2010



M I D W E S T E R N
C O N S U L T I N G

3815 Plaza Drive Ann Arbor, Michigan 48108
(734) 995-0200 • www.midwesternconsulting.com
Land Development • Land Survey • Institutional • Municipal
Wireless Communications • Transportation • Landfill Services

PROPOSED SIDEWALK EASEMENT

DATE: 01/24/23

JOB NO.: **19285**

SCALE: 1" = 200'

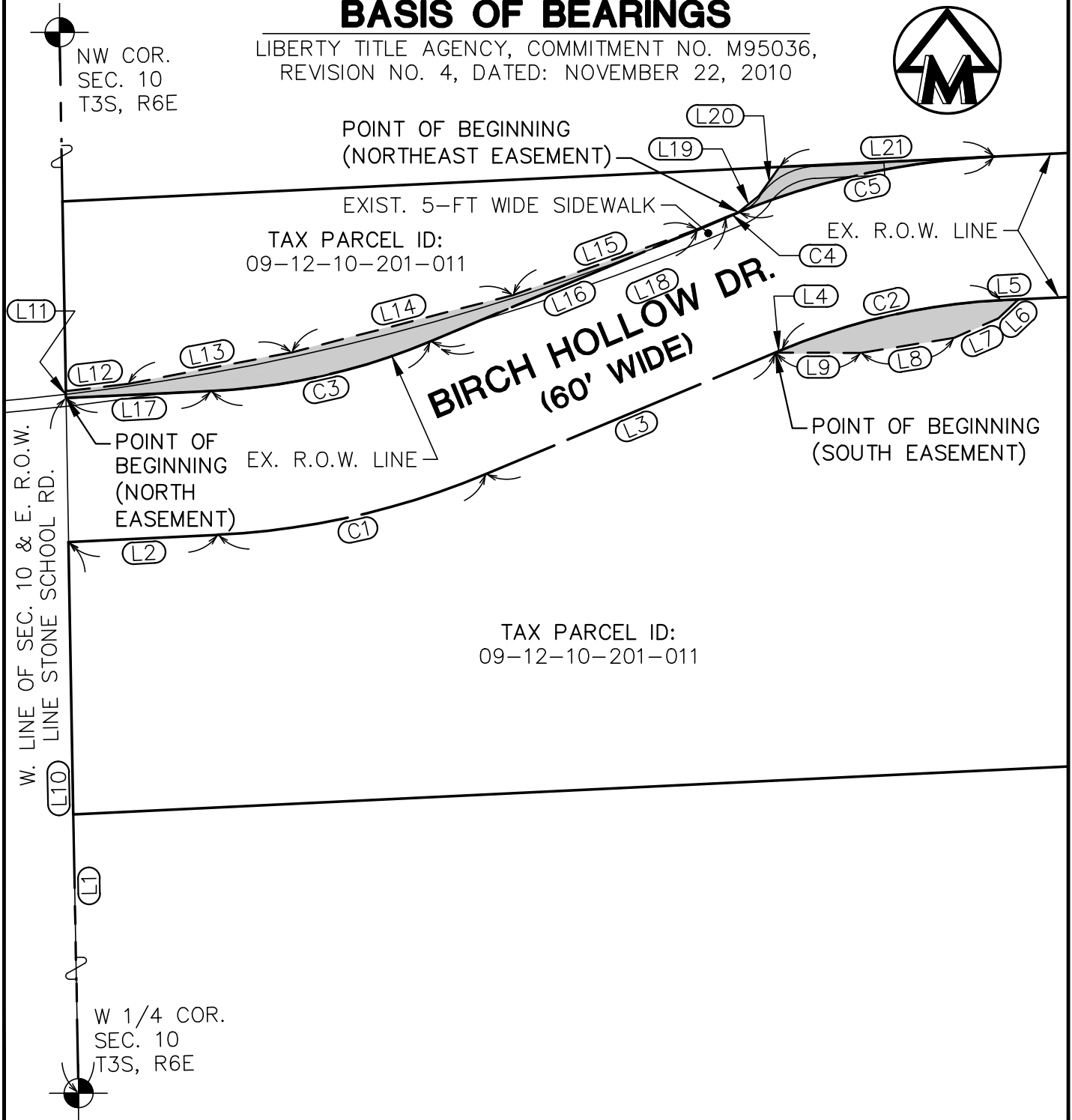


SHEET 1 OF 8

PROPOSED VARIABLE WIDTH PUBLIC SIDEWALK EASEMENT

BASIS OF BEARINGS

LIBERTY TITLE AGENCY, COMMITMENT NO. M95036,
REVISION NO. 4, DATED: NOVEMBER 22, 2010



M I D W E S T E R N
C O N S U L T I N G

3815 Plaza Drive Ann Arbor, Michigan 48108
(734) 995-0200 • www.midwesternconsulting.com
Land Development • Land Survey • Institutional • Municipal
Wireless Communications • Transportation • Landfill Services

PROPOSED SIDEWALK EASEMENT

DATE: 01/24/23

JOB NO.: **19285**

SCALE: 1" = 60'



SHEET 2 OF 8

PROPOSED SOUTH SIDEWALK EASEMENT LINE TABLE

LINE TABLE		
LINE	BEARING	DISTANCE
L1	N01°31'30"W	587.59'
L2	N86°44'00"E	62.42'
L3	N66°44'00"E	130.96'
L4	N66°44'00"E	2.89'
L5	N86°44'00"E	7.18'
L6	S46°09'44"W	11.55'
L7	S65°44'58"W	20.04'
L8	S80°15'50"W	39.46'
L9	S89°43'03"W	35.60'

CURVE DATA					
CURVE	ARC	RADIUS	DELTA	CHORD BEARING	CHORD DISTANCE
C1	115.19'	330.00'	20°00'01"	N76°44'00"E	114.61'
C2	94.25'	270.00'	20°00'00"	N76°44'00"E	93.77'



M I D W E S T E R N
C O N S U L T I N G

3815 Plaza Drive Ann Arbor, Michigan 48108
(734) 995-0200 • www.midwesternconsulting.com
Land Development • Land Survey • Institutional • Municipal
Wireless Communications • Transportation • Landfill Services

PROPOSED SIDEWALK EASEMENT

DATE: 01/24/23

JOB NO.: **19285**

SCALE: 1" = N/A



SHEET 3 OF 8

LEGAL DESCRIPTION - SOUTH SIDEWALK EASEMENT

PROPOSED VARIABLE WIDTH SIDEWALK EASEMENT ON A PARCEL OF LAND
LOCATED IN THE NW 1/4 OF SECTION 10, T3S, R6E, CITY OF ANN ARBOR,
WASHTENAW COUNTY, MICHIGAN

Commencing at the W 1/4 corner of Section 10, T3S, R6E, City of Ann Arbor, Washtenaw County, Michigan, thence N01°31'30"W 587.59 feet along the West line of said Section 10 and the East right-of-way line of Stone School Road (variable width); thence along the Southerly right-of-way line of Birch Hollow Drive (60' wide) in the following three (3) courses: 1) N86°44'00"E 62.42 feet; 2) 115.19 feet along a tangential curve to the left, radius 330.00 feet, central angle 20°00'01", long chord N76°44'00"E 114.61 feet; 3) N66°44'00"E 130.96 feet to the POINT OF BEGINNING; thence continuing along the Southerly right-of-way line of Birch Hollow Drive in the following three (3) courses; 1) N66°44'00"E 2.89 feet; 2) 94.25 feet along a tangential curve to the right, radius 270.00 feet, central angle 20°00'00", long chord N76°44'00"E 93.77 feet; 3) N86°44'00"E 7.18 feet; thence S46°09'44"W 11.55 feet; thence S65°44'58"W 20.04 feet; thence S80°15'50"W 39.46 feet; thence S89°43'03"W 35.60 feet to the POINT OF BEGINNING. Being part of the NW 1/4 of Section 10, T3S, R6E, City of Ann Arbor, Washtenaw County, Michigan. Being subject to any easements and restrictions of record, if any.



M I D W E S T E R N
C O N S U L T I N G

3815 Plaza Drive Ann Arbor, Michigan 48108
(734) 995-0200 • www.midwesternconsulting.com
Land Development • Land Survey • Institutional • Municipal
Wireless Communications • Transportation • Landfill Services

PROPOSED SIDEWALK EASEMENT

DATE: 01/24/23

JOB NO.: **19285**

SCALE: 1" = N/A



SHEET 4 OF 8

PROPOSED NORTH SIDEWALK EASEMENT LINE TABLE

LINE TABLE		
LINE	BEARING	DISTANCE
L10	N01°31'30"W	647.62'
L11	N01°31'30"W	2.94'
L12	N82°55'49"E	26.05'
L13	N78°35'33"E	69.52'
L14	N74°59'25"E	95.31'
L15	N69°52'58"E	81.82'
L16	S66°44'00"W	120.87'
L17	S86°44'00"W	60.60'

CURVE DATA					
CURVE	ARC	RADIUS	DELTA	CHORD BEARING	CHORD DISTANCE
C3	94.25'	270.00'	20°00'00"	S76°44'00"W	93.77'



M I D W E S T E R N
C O N S U L T I N G

3815 Plaza Drive Ann Arbor, Michigan 48108
(734) 995-0200 • www.midwesternconsulting.com
Land Development • Land Survey • Institutional • Municipal
Wireless Communications • Transportation • Landfill Services

PROPOSED SIDEWALK EASEMENT

DATE: 01/24/23

JOB NO.: **19285**

SCALE: 1" = N/A



SHEET 5 OF 8

LEGAL DESCRIPTION - NORTH SIDEWALK EASEMENT

PROPOSED VARIABLE WIDTH SIDEWALK EASEMENT ON A PARCEL OF LAND
LOCATED IN THE NW 1/4 OF SECTION 10, T3S, R6E, CITY OF ANN ARBOR,
WASHTENAW COUNTY, MICHIGAN

Commencing at the W 1/4 corner of Section 10, T3S, R6E, City of Ann Arbor,
Washtenaw County, Michigan, thence N01°31'30"W 647.62 feet along the West line
of said Section 10 and the East right-way-line of Stone School Road (variable width)
to the POINT OF BEGINNING;

thence continuing N01°31'30"W 2.94 feet along said West line;

thence N82°55'49"E 26.05 feet;

thence N78°35'33"E 69.52 feet;

thence N74°59'25"E 95.31 feet;

thence N69°52'58"E 81.82 feet;

thence along the Northerly right-of-way line of Birch Hollow Drive (60' wide) in
the following three (3) courses: 1) S66°44'00"W 120.87 feet; 2) 94.25 feet along a
tangential curve to the right, radius 270.00 feet, central angle 20°00'00", long chord
S76°44'00"W 93.77 feet; 3) S86°44'00"W 60.60 feet to the POINT OF BEGINNING.

Being part of the NW 1/4 of Section 10, T3S, R6E, City of Ann Arbor, Washtenaw
County, Michigan. Being subject to any easements and restrictions of record, if any.



M I D W E S T E R N
C O N S U L T I N G

3815 Plaza Drive Ann Arbor, Michigan 48108
(734) 995-0200 • www.midwesternconsulting.com
Land Development • Land Survey • Institutional • Municipal
Wireless Communications • Transportation • Landfill Services

PROPOSED SIDEWALK EASEMENT

DATE: 01/24/23

JOB NO.: **19285**

SCALE: 1" = N/A



SHEET 6 OF 8

PROPOSED NORTHEAST SIDEWALK EASEMENT LINE TABLE

LINE TABLE		
LINE	BEARING	DISTANCE
L10	N01°31'30"W	647.62'
L17	N86°44'00"E	60.60'
L18	N66°44'00"E	133.85'
L19	N50°26'25"E	10.84'
L20	N34°58'04"E	14.82'
L21	N86°44'00"E	89.76'

CURVE DATA					
CURVE	ARC	RADIUS	DELTA	CHORD BEARING	CHORD DISTANCE
C3	94.25'	270.00'	20°00'00"	N76°44'00"E	93.77'
C4	5.52'	330.00'	00°57'30"	N67°12'43"E	5.52'
C5	109.67'	330.00'	19°02'31"	S77°12'43"W	109.17'



M I D W E S T E R N
C O N S U L T I N G

3815 Plaza Drive Ann Arbor, Michigan 48108
(734) 995-0200 • www.midwesternconsulting.com
Land Development • Land Survey • Institutional • Municipal
Wireless Communications • Transportation • Landfill Services

PROPOSED SIDEWALK EASEMENT

DATE: 01/24/23

JOB NO.: **19285**

SCALE: 1" = N/A



SHEET 7 OF 8

LEGAL DESCRIPTION - NORTHEAST SIDEWALK EASEMENT

PROPOSED VARIABLE WIDTH SIDEWALK EASEMENT ON A PARCEL OF LAND
LOCATED IN THE NW 1/4 OF SECTION 10, T3S, R6E, CITY OF ANN ARBOR,
WASHTENAW COUNTY, MICHIGAN

Commencing at the W 1/4 corner of Section 10, T3S, R6E, City of Ann Arbor, Washtenaw County, Michigan, thence N01°31'30"W 647.62 feet along the West line of said Section 10 and the East right-of-way line of Stone School Road (variable width); thence along the Northerly right-of-way line of Birch Hollow Drive (60' wide) in the following four (4) courses: 1) N86°44'00"E 60.60 feet; 2) 94.25 feet along a tangential curve to the left, radius 270.00 feet, central angle 20°00'00", long chord N76°44'00"E 93.77 feet; 3) N66°44'00"E 133.85 feet; 4) 5.52 feet along a tangential curve to the right, radius 330.00 feet, central angle 00°57'28", long chord N67°12'43"E 5.52 feet to the POINT OF BEGINNING.

thence N50°26'25"E 10.84 feet;

thence N34°58'04"E 14.82 feet;

thence N86°44'00"E 89.76 feet;

thence 109.67 feet along a non-tangential curve to the left, radius 330.00 feet, central angle 19°02'31", long chord S77°12'43"W 109.17 feet along said Northerly right-of-way line to the POINT OF BEGINNING. Being part of the NW 1/4 of Section 10, T3S, R6E, City of Ann Arbor, Washtenaw County, Michigan. Being subject to any easements and restrictions of record, if any.



M I D W E S T E R N
C O N S U L T I N G

3815 Plaza Drive Ann Arbor, Michigan 48108
(734) 995-0200 • www.midwesternconsulting.com
Land Development • Land Survey • Institutional • Municipal
Wireless Communications • Transportation • Landfill Services

PROPOSED SIDEWALK EASEMENT

DATE: 01/24/23

JOB NO.: **19285**

SCALE: 1" = N/A



SHEET 8 OF 8