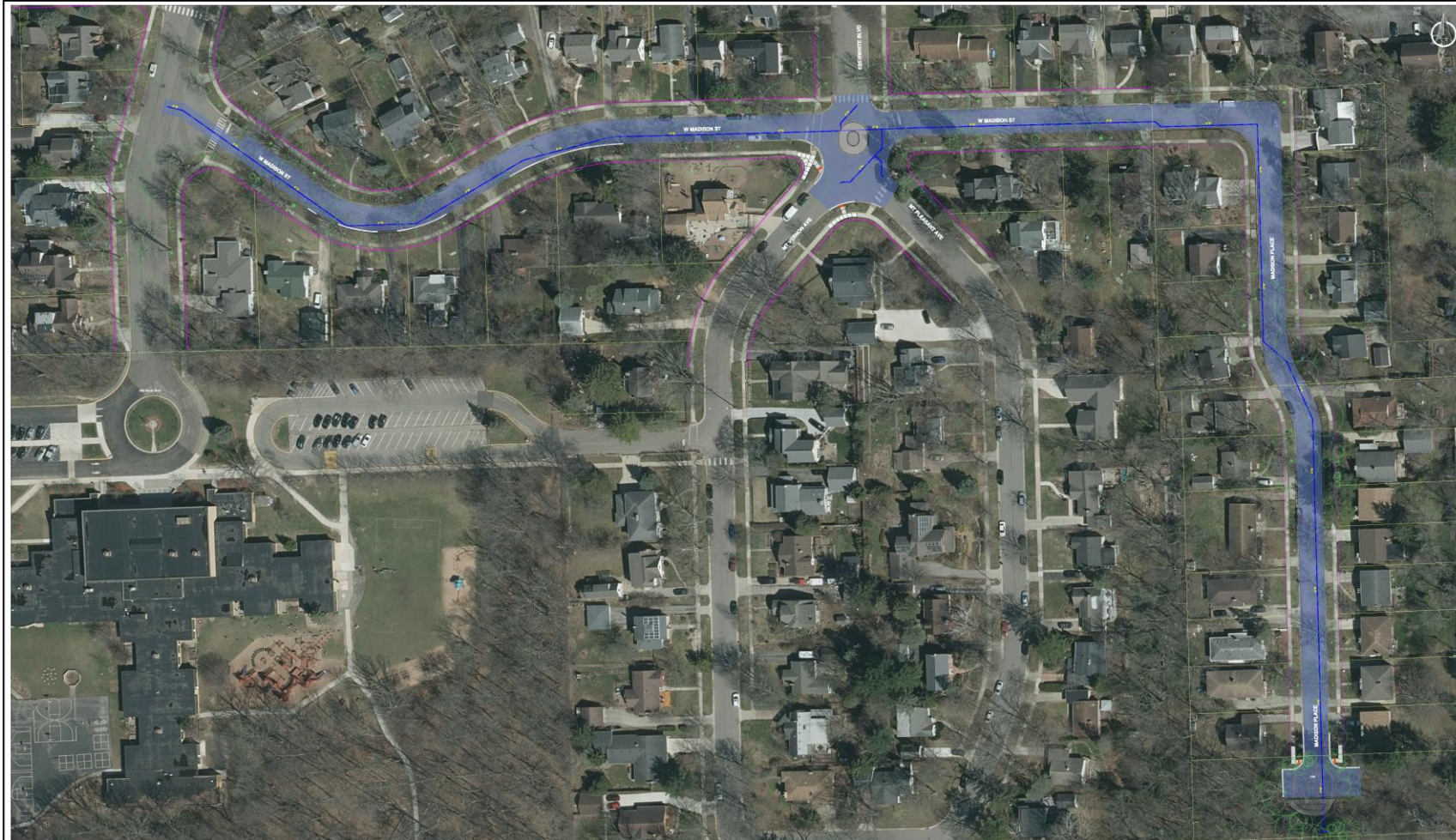




Water Main Replacement and Road Resurfacing

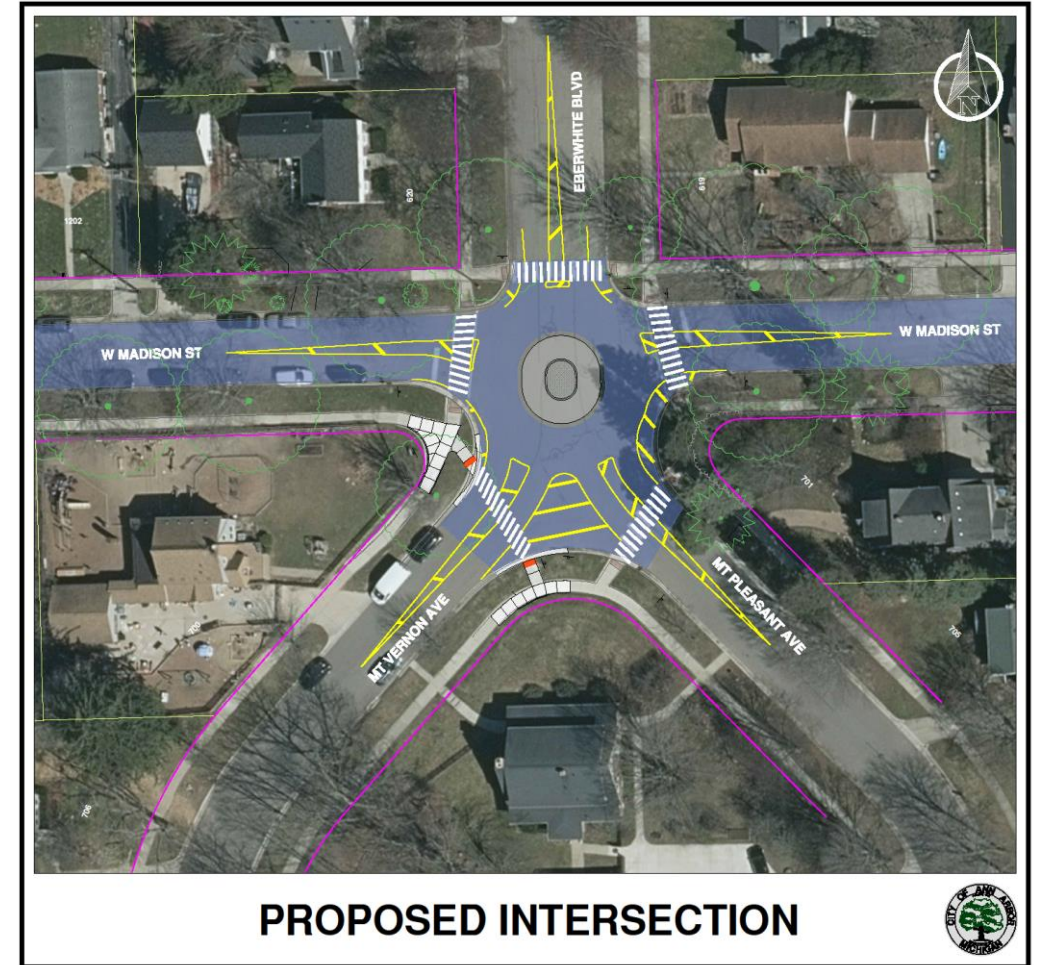
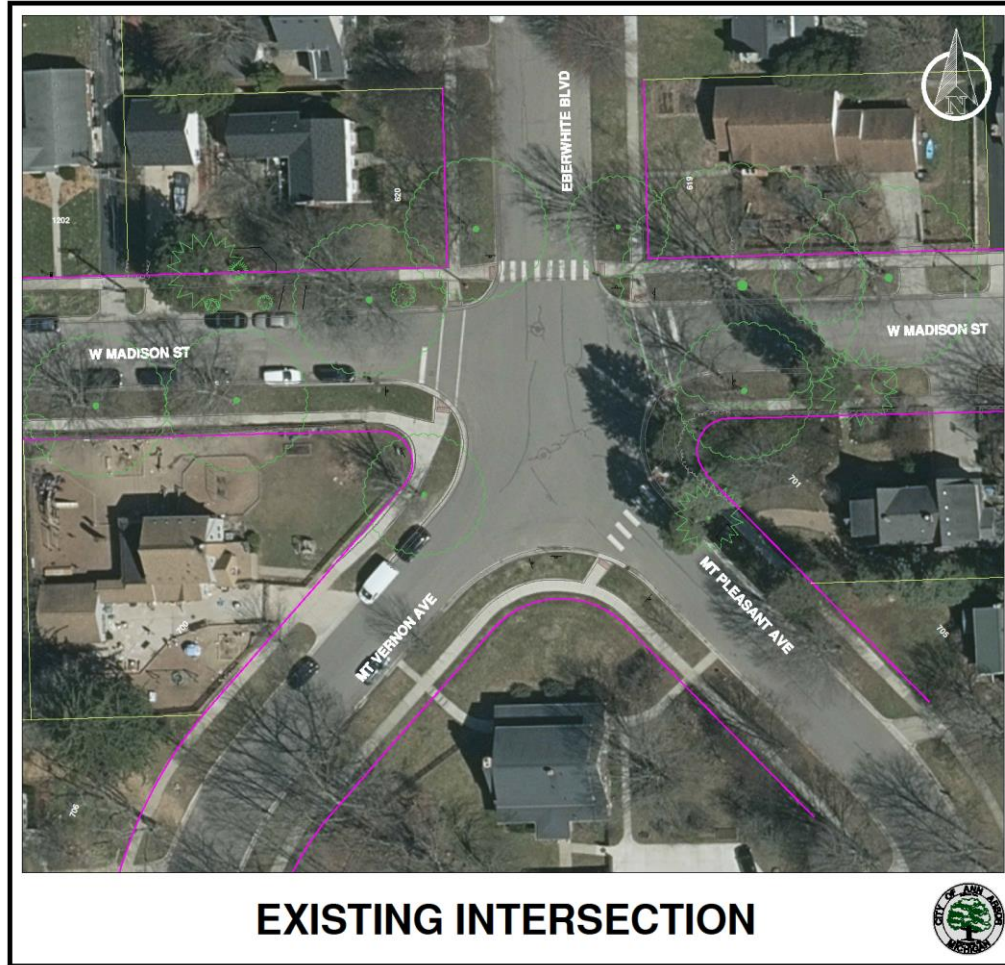


WEST MADISON WATER MAIN REPLACEMENT AND RESURFACING





Madison and Eberwhite Intersection: Roundabout





Turnaround at Madison Place

- Install a turnaround for trucks to reduce turning in private driveways
- Link sidewalks and add a crosswalk
- Loop the dead end water main on Madison Place
- Add stormwater control

