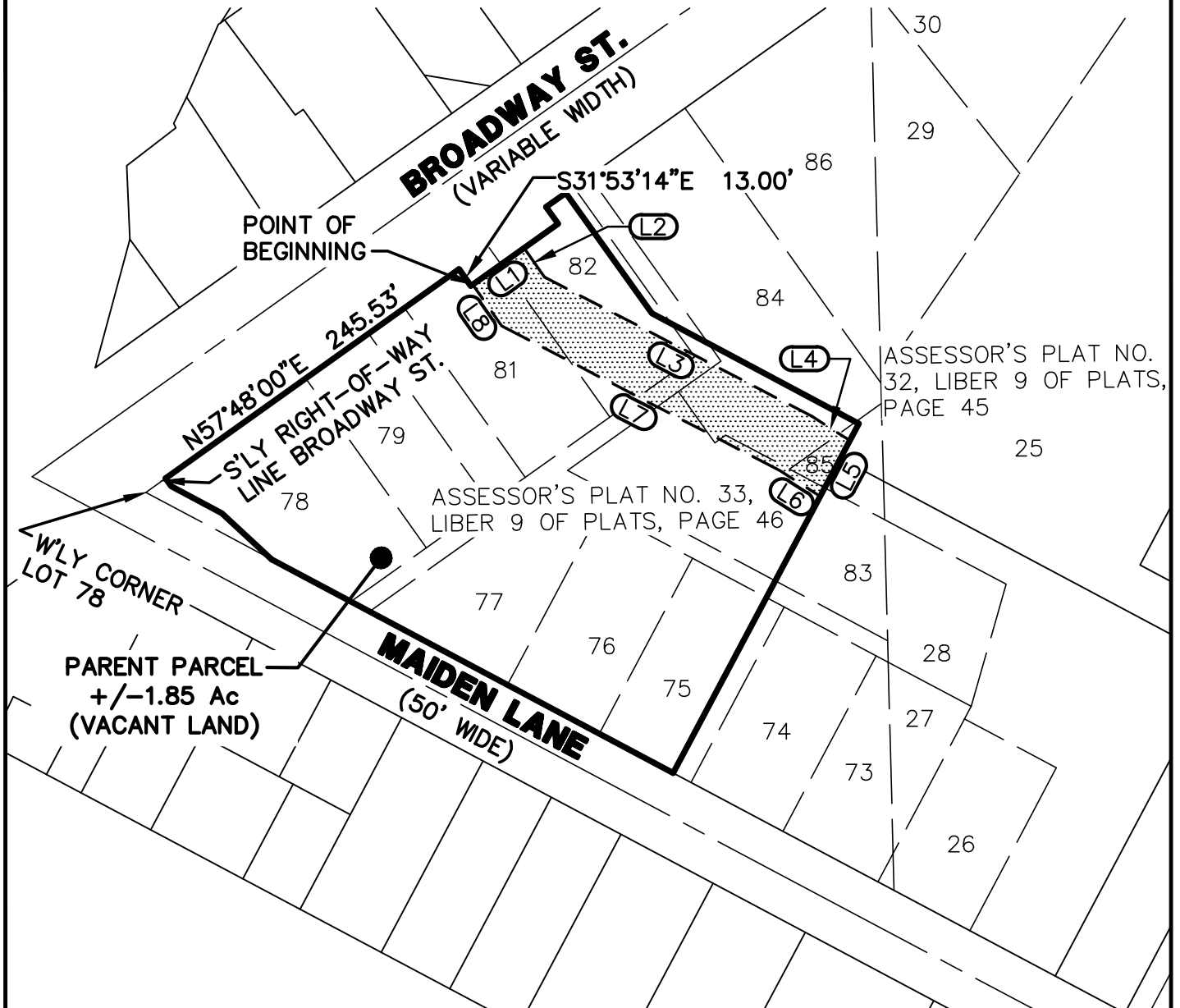


# EXHIBIT A

## NOTES:

- 1) BEARINGS BASED ON "ASSESSOR'S PLAT NO. 33", AS RECORDED IN LIBER 9 OF PLATS, PAGE 46, WASHTENAW COUNTY RECORDS.
- 2) SEE LINE TABLE SHEET 2.



PROPOSED WATER MAIN EASEMENT LOCATED  
IN THE SW 1/4 OF SECTION 21, T2S, R6E,  
CITY OF ANN ARBOR, WASHTENAW COUNTY, MICHIGAN



**M I D W E S T E R N**  
**C O N S U L T I N G**

3815 Plaza Drive Ann Arbor, Michigan 48108  
(734) 995-0200 • www.midwesternconsulting.com  
Land Development • Land Survey • Institutional • Municipal  
Wireless Communications • Transportation • Landfill Services

**MORNINGSIDE**  
**PROPOSED WATER MAIN EASEMENT**

DATE: 10/25/18

JOB NO.: **16196**

SCALE: 1" = 100'



SHEET 1 OF 3

# EXHIBIT A CONT.

LINE TABLE		
LINE	BEARING	DISTANCE
L1	N57°48'00"E	40.00'
L2	S31°53'14"E	22.57'
L3	S59°13'59"E	191.10'
L4	S54°13'59"E	28.74'
L5	S31°16'00"W	40.12'
L6	N54°13'59"W	30.14'
L7	N59°13'59"W	199.09'
L8	N31°53'14"W	32.08'



## M I D W E S T E R N C O N S U L T I N G

3815 Plaza Drive Ann Arbor, Michigan 48108  
 (734) 995-0200 • www.midwesternconsulting.com  
 Land Development • Land Survey • Institutional • Municipal  
 Wireless Communications • Transportation • Landfill Services

### MORNINGSIDE PROPOSED WATER MAIN EASEMENTS

DATE: 10/25/18

JOB NO.: **16196**

SCALE: 1"= N/A



SHEET 2 OF 3

## EXHIBIT A CONT.

### LEGAL DESCRIPTION OF A PROPOSED EASEMENT FOR WATER MAIN LOCATED IN THE CITY OF ANN ARBOR, WASHTENAW COUNTY, MICHIGAN

Commencing at the Westerly corner of Lot 78 of ASSESSOR'S PLAT NO. 33, as recorded in Liber 9 of Plats, Page 46, Washtenaw County Records; thence N 57°48'00" E 245.53 feet along the Southerly right-of-way line of Broadway Street (variable width); thence S 31°53'14" E 13.00 feet to the POINT OF BEGINNING;

thence N 57°48'00" E 40.00 feet;

thence S 31°53'14" E 22.57 feet;

thence S 59°13'59" E 191.10 feet;

thence S 54°13'59" E 28.74 feet;

thence S 31°16'00" W 40.12 feet;

thence N 54°13'59" W 30.14 feet;

thence N 59°13'59" W 199.09 feet;

thence N 31°53'14" W 32.08 feet to the POINT OF BEGINNING. Being a part of Lots 81 through 85 and a vacated alley of ASSESSOR'S PLAT NO. 33, as recorded in Liber 9 of Plats, Page 46, Washtenaw County Records. Subject to easements and restrictions of record, if any.



#### M I D W E S T E R N C O N S U L T I N G

3815 Plaza Drive Ann Arbor, Michigan 48108  
(734) 995-0200 • www.midwesternconsulting.com  
Land Development • Land Survey • Institutional • Municipal  
Wireless Communications • Transportation • Landfill Services

#### MORNINGSIDE PROPOSED WATER MAIN EASEMENT

DATE: 10/25/18

JOB NO.: **16196**

SCALE: 1" = N/A



SHEET 3 OF 3