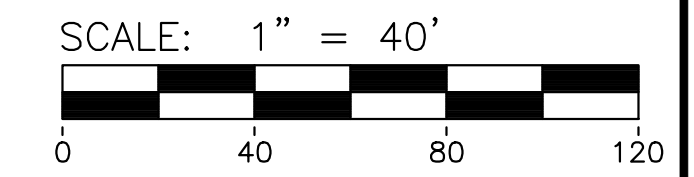
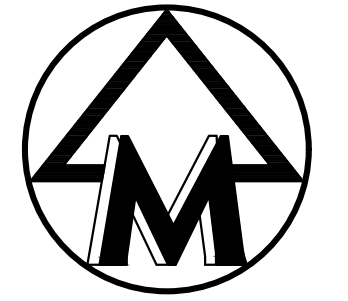


MATCHLINE - SEE SHEET 14

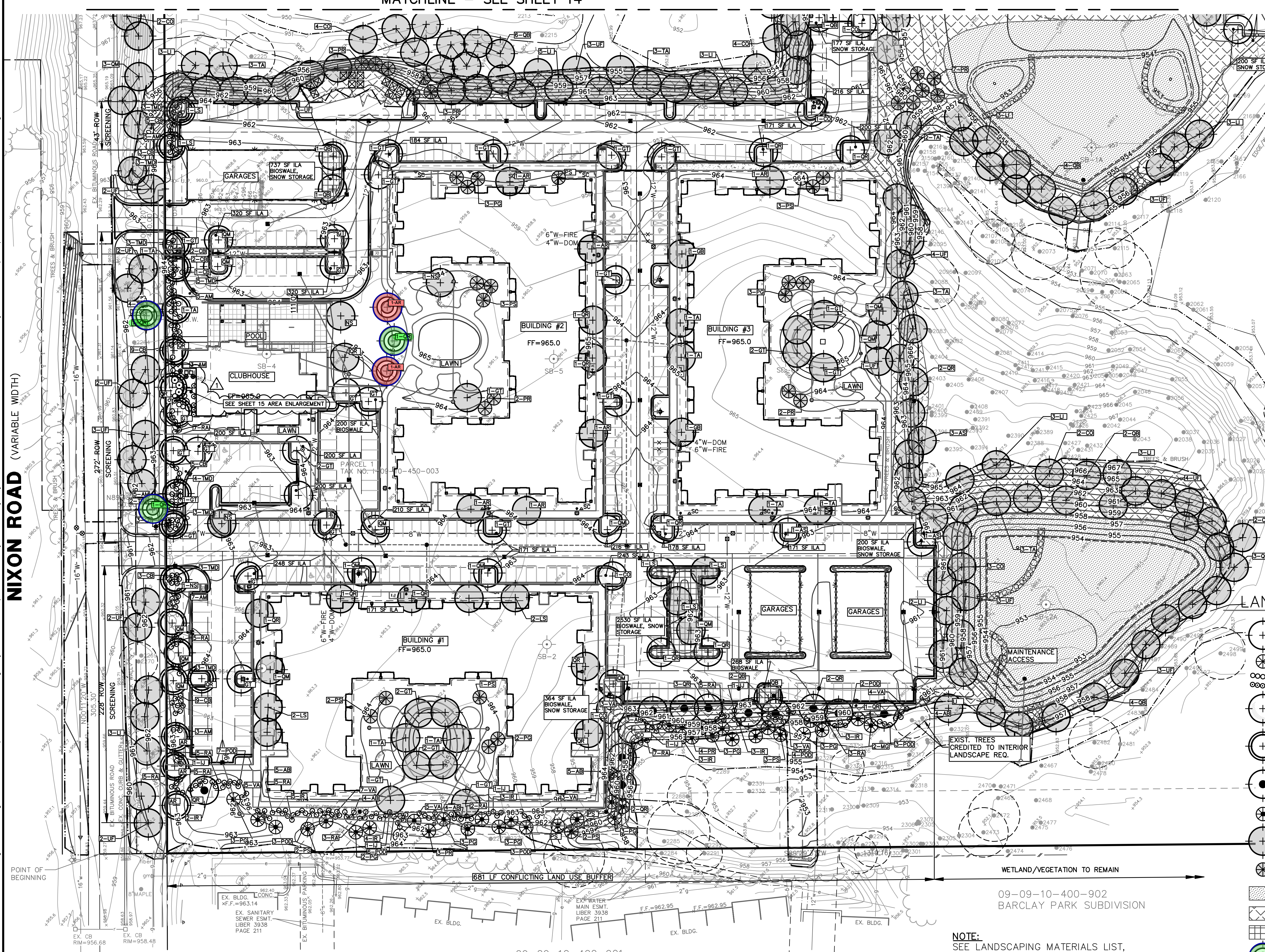


LEGEND

- 838 EXIST. CONTOUR
- 838 PROP. CONTOUR
- 836.2 EXIST. SPOT ELEVATION
- 36.60 PROP. SPOT ELEVATION
- U.P. EXIST. UTILITY POLE
- GUY WIRE
- ELEC. TRANSFORMER
- EXIST. OVERHEAD UTILITY LINE
- PROP. LIGHT POLE
- t EXIST. TELEPHONE LINE
- e EXIST. ELECTRIC LINE
- g EXIST. GAS LINE
- w EXIST. WATER MAIN
- W PROP. WATER MAIN
- EXIST. HYDRANT
- PROP. HYDRANT
- EXIST. GATE VALVE IN BOX
- PROP. GATE VALVE IN BOX
- EXIST. GATE VALVE IN WELL
- PROP. GATE VALVE IN WELL
- EXIST. STORM SEWER
- PROP. STORM SEWER
- EXIST. CATCH BASIN OR INLET
- PROP. CATCH BASIN OR INLET
- END SECTION
- EXIST. SANITARY SEWER
- PROP. SANITARY SEWER
- C OF DITCH
- SIGN
- MAILBOX
- TELEPHONE RISER
- FENCE
- SINGLE TREE
- LANDMARK TREE
- TREE OR BRUSH LIMIT
- SECTION CORNER
- SOIL BORING LOCATION
- FOUND IRON PIPE
- FOUND MONUMENT
- CONTROL PT.
- VEHICULAR USE AREA

LANDSCAPE LEGEND

- PROPOSED CANOPY TREE
- PROPOSED EVERGREEN TREE
- PROPOSED DECIDUOUS SHRUBS
- PROPOSED EVERGREEN SHRUBS
- PROPOSED CANOPY TREE (INTERIOR VJA)
- PROPOSED CANOPY TREE (RIGHT-OF-WAY SCREEN)
- PROPOSED CANOPY TREE (CONFLICTING LAND USE BUFFER)
- PROPOSED EVERGREEN TREE (CONFLICTING LAND USE BUFFER)
- PROPOSED CANOPY TREE (LANDMARK/WOODLAND REPLACEMENT)
- PROPOSED EVERGREEN TREE (LANDMARK/WOODLAND REPLACEMENT)
- FIRST FLUSH BASIN/DETENTION POND/WETLAND SEED MIX
- MDOT STANDARD SPECIFICATION SEED MIX THM
- BIOSWALE AREA
- LANDMARK CONSTRUCTION REMOVAL REPLACEMENT MITIGATION
- Tree (TA), Basswood Linden Not Available; Acceptable Substitute by AA; Red Maple, AR, 2.5" Used, (Qty. 7, For LM Mitigation)



The underground utilities shown have been located from field survey information and existing records. The surveyor makes no guarantees that the underground utilities shown comprise all such utilities in the area, either in-service or abandoned. The surveyor further does not warrant that the underground utilities shown are in the exact location indicated. Although the surveyor does certify that they are located as accurately as possible from the information available.

NOTE:
SEE LANDSCAPING MATERIALS LIST,
NOTES, DETAILS, REQUIREMENTS
AND SEED MIXES ON SHEET 15

MIDWESTERN CONSULTING
 3815 Plaza Drive Ann Arbor, Michigan 48108
 (734) 995-0200 • www.midwesternconsulting.com
 Land Development • Land Survey • Institutional • Municipal
 Wireless Communications • Transportation • Landfill Services

M

CLIENT
 BRE NIXON RD. ASSOC. LLC
 260 E. BROWN ST.
 BIRMINGHAM, MI 49009
 MIKE PARKS
 (248) 540-9300

THE ANNEX
 AMENDMENT FOR PLANNING COMMISSION
 LANDSCAPE PLAN (SOUTH)

13

DATE: 07-24-13
 PER CITY COMMENTS: 9-19-20
 REV. CLUBHOUSE SCREENING: 12-19-18
 PER CITY COMMENTS: 03-22-17
 REV. CLUBHOUSE SCREENING: 12-28-16
 REV. CLUBHOUSE SCREENING: 08-09-16

12088
 SHEET 13 OF 23
 REV. DATE: 07-24-13
 CADD: 02-14-14
 ENCL. JCA: 5-30-14
 ENCL. SWE: 6-05-14
 PER REVIEW COMMENTS: 9-09-14
 PER REVIEW COMMENTS: 7-29-16
 PER REVIEW COMMENTS: 08-09-16

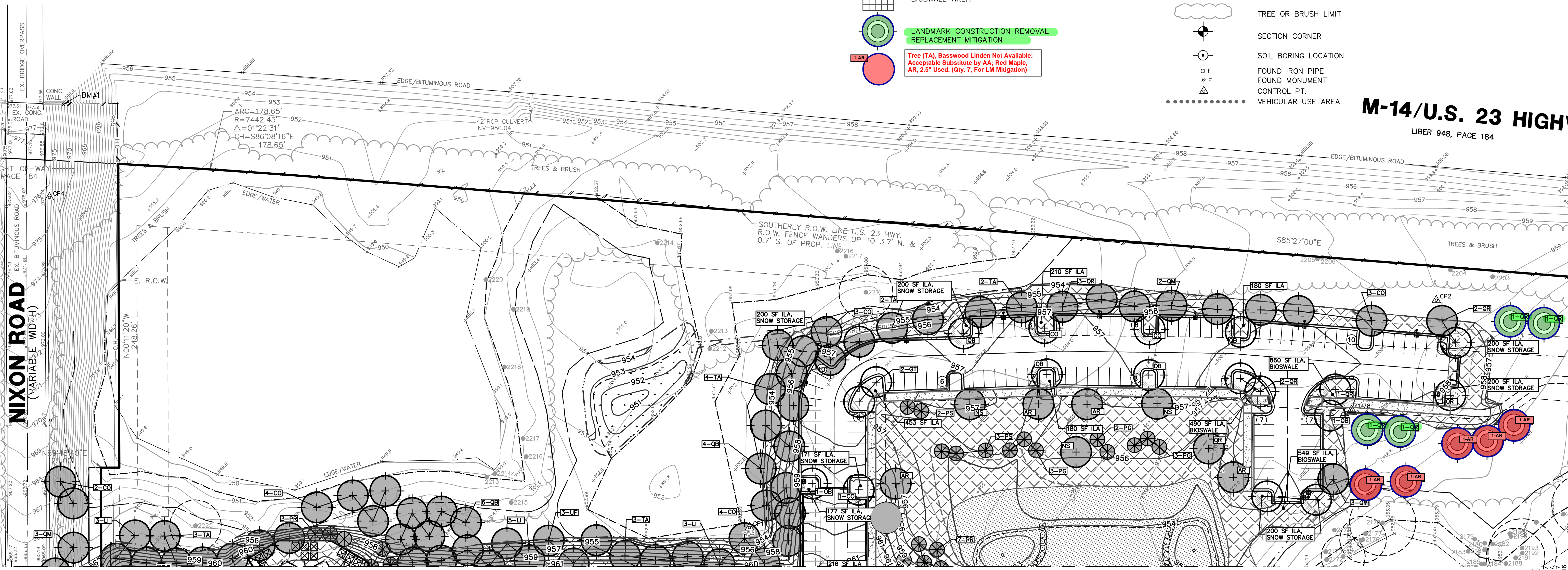
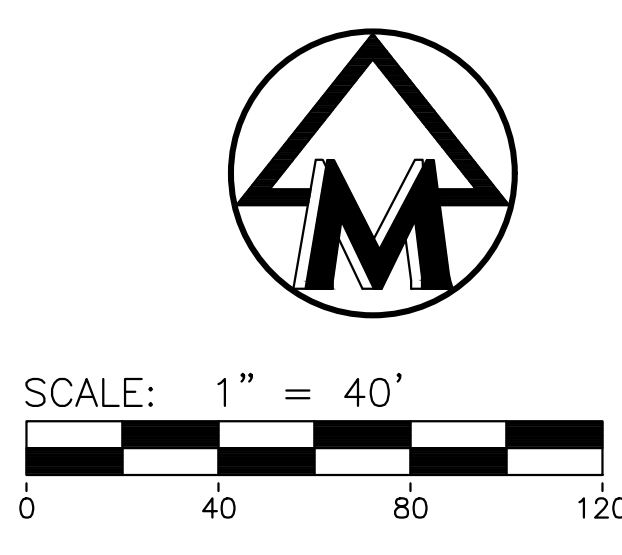
M:\Civ\132_Proj\12088\Site Plan - PC Amer\12088\Site Plan - PC Amer\12088\Site Plan - PC Amer.dwg, 8/19/2020 9:30 AM, Jim Ahern, None
 Copyright © 2020, Midwestern Consulting LLC. All rights reserved. No part of this drawing may be used or reproduced in any form or by any means, or stored in a database or retrieval system, without prior permission of Midwestern Consulting LLC.

LANDSCAPE LEGEND

- PROPOSED CANOPY TREE
- PROPOSED EVERGREEN TREE
- PROPOSED DECIDUOUS SHRUBS
- PROPOSED EVERGREEN SHRUBS
- PROPOSED CANOPY TREE (INTERIOR VUA)
- PROPOSED CANOPY TREE (RIGHT-OF-WAY SCREEN)
- PROPOSED CANOPY TREE (CONFLICTING LAND USE BUFFER)
- PROPOSED EVERGREEN TREE (CONFLICTING LAND USE BUFFER)
- PROPOSED CANOPY TREE (LANDMARK/WOODLAND REPLACEMENT)
- PROPOSED EVERGREEN TREE (LANDMARK/WOODLAND REPLACEMENT)
- PROPOSED CANOPY TREE (LANDMARK/WOODLAND REPLACEMENT)
- PROPOSED EVERGREEN TREE (LANDMARK/WOODLAND REPLACEMENT)
- MDOT STANDARD SPECIFICATION SEED MIX THM
- BIOSWALE AREA
- LANDMARK CONSTRUCTION REMOVAL REPLACEMENT MITIGATION**
- Tree (TA), Basswood Linden Not Available: Acceptable Substitute by AA; Red Maple, AR, 2.5" Used. (Qty. 7, For LM Mitigation)**

LEGEND

- 838 EXIST. CONTOUR
- 838 PROP. CONTOUR
- 836.2 EXIST. SPOT ELEVATION
- 36.60 PROP. SPOT ELEVATION
- U.P. EXIST. UTILITY POLE
- GUY WIRE
- ELEC. TRANSFORMER
- EXIST. OVERHEAD UTILITY LINE
- PROP. LIGHT POLE
- EXIST. TELEPHONE LINE
- EXIST. ELECTRIC LINE
- EXIST. GAS LINE
- EXIST. WATER MAIN
- PROP. WATER MAIN
- EXIST. HYDRANT
- PROP. HYDRANT
- EXIST. GATE VALVE IN BOX
- PROP. GATE VALVE IN BOX
- EXIST. GATE VALVE IN WELL
- PROP. GATE VALVE IN WELL
- EXIST. STORM SEWER
- PROP. STORM SEWER
- EXIST. CATCH BASIN OR INLET
- PROP. CATCH BASIN OR INLET
- END SECTION
- EXIST. SANITARY SEWER
- PROP. SANITARY SEWER
- C OF DITCH
- SIGN
- MAILBOX
- TELEPHONE RISER
- FENCE
- SINGLE TREE
- LANDMARK TREE
- TREE OR BRUSH LIMIT
- SECTION CORNER
- SOIL BORING LOCATION
- FOUND IRON PIPE
- FOUND MONUMENT
- CONTROL PT.
- VEHICULAR USE AREA



MATCHLINE – SEE SHEET 13

The underground utilities shown have been located from field survey information and existing records. The surveyor makes no guarantees that the underground utilities shown comprise all such utilities in the area, either in-service or abandoned. The surveyor further does not warrant that the underground utilities shown are in the exact location indicated. Although the surveyor does certify that they are located as accurately as possible from the information available.

MIDWESTERN CONSULTING	
3815 Plaza Drive Ann Arbor, Michigan 48108 (734) 995-0200 • www.midwesternconsulting.com Land Development • Land Survey • Institutional • Municipal Wireless Communications • Transportation • Landfill Services	
THE ANEX	
AMENDMENT FOR PLANNING COMMISSION	
LANDSCAPE PLAN (NORTH)	
14	
CLIENT: BRE NIXON RD. ASSOC. LLC 260 E. BROWN ST. BIRMINGHAM, MI 49009 MIKE PARKS (248) 540-9300	DATE: 07-24-13 SHEET 14 OF 23
PER CITY COMMENTS: 8-19-20 AMENDMENT FOR PC: 7-23-20 PER CITY REVIEW: 03-15-17 REVISED: 02-03-17 PER CITY REVIEW: 02-03-17 REVISED: 08-23-16	REVISIONS: 2-08-14 5-20-14 6-05-14 9-09-14 7-23-16
JOB No. 12088 SHEET 14 OF 23	PER CITY COMMENTS PER CITY REVIEW PER CITY REVIEW PER CITY REVIEW PER CITY REVIEW