



ANN ARBOR
MOVING
TOGETHER

TOWARDS VISION ZERO



Updated Tiered Corridors and Intersections

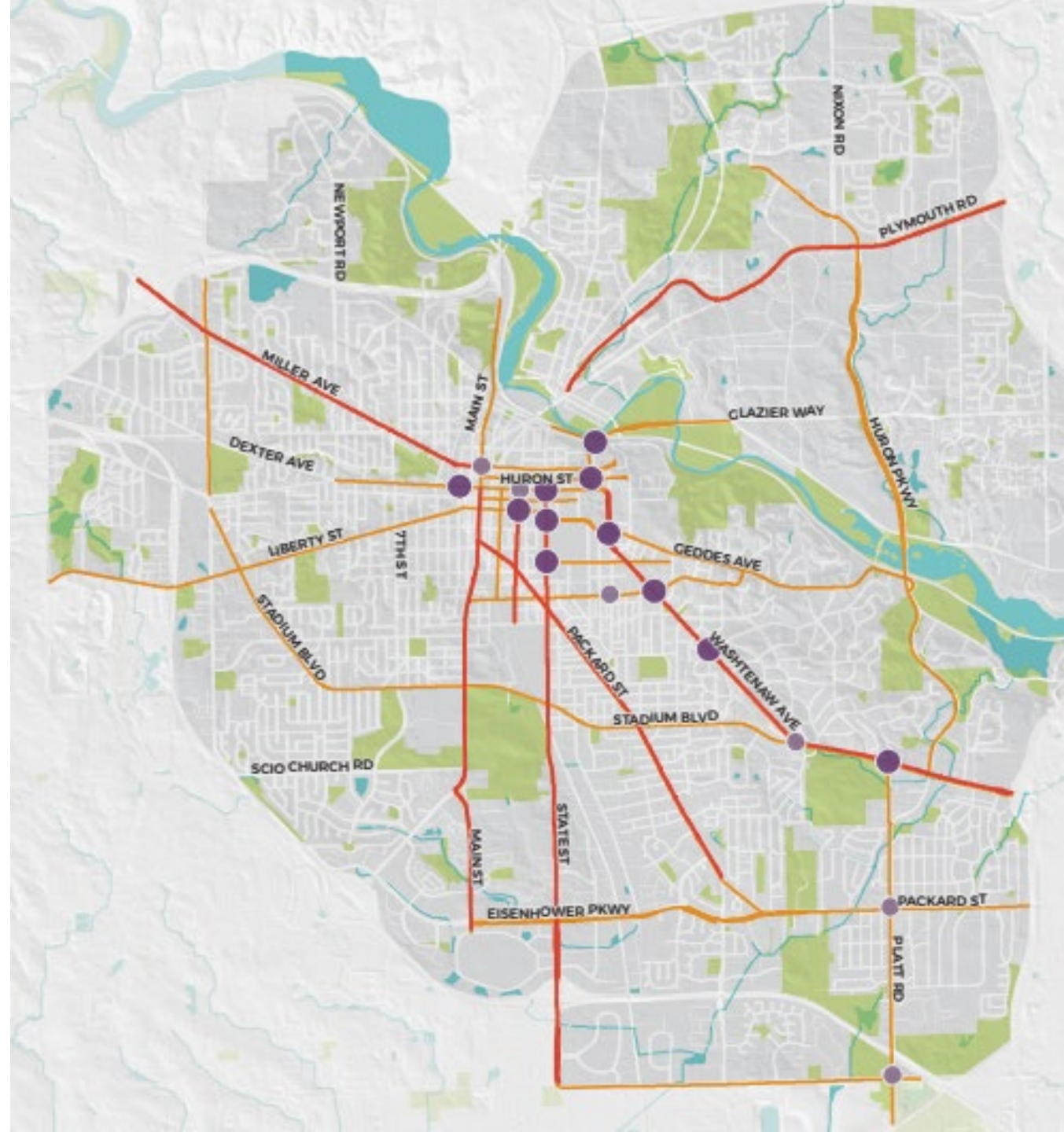
Connecting Planning and Transportation

- Planning Studies – North Main Street and Multi-Lane Evaluation
- CIP – add language to studies and projects to show emphasis
- CIP Scoring – more points allocated for safety focused corridors

- Tier 1 Focus Corridors**
- Tier 1 Focus Intersections**
- Tier 2 Focus Corridors**
- Tier 2 Focus Intersections**

Existing Tiered Locations

2014-2018 Data



Purpose of Tiered Locations

- Obtain Vision Zero safety goal
- Identify high crash severity and frequency locations
- Provide focused attention for capital investments
- Prioritize transportation investments in the Capital Improvement Plan (CIP)

Methodology Overview:

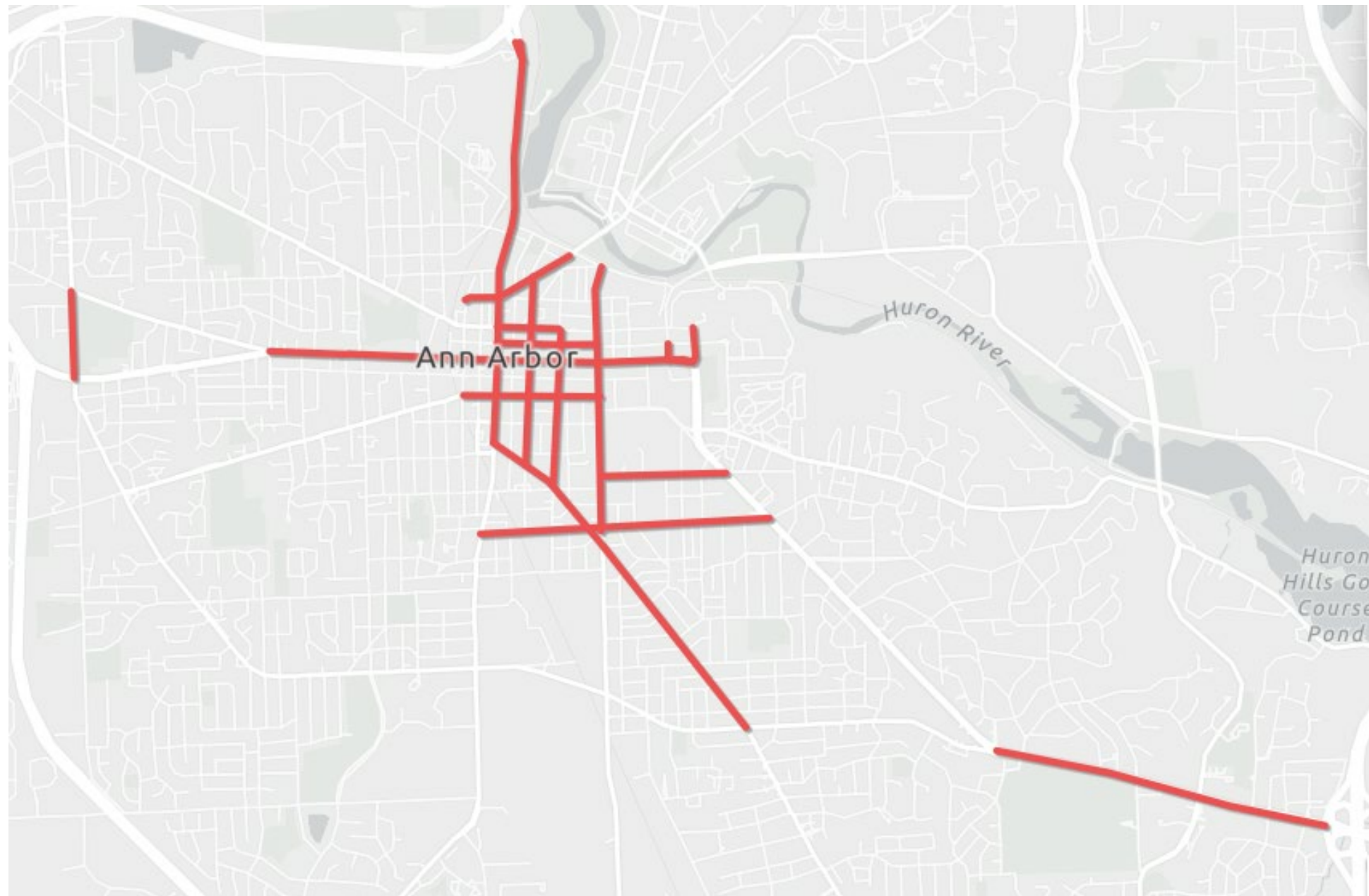
- 2019-2023 crash data set
- Shortened segments for corridors
- Added AAPD crash investigations for scoring
- Manual changes
- Update every 2 years

Alignment with Vision Zero Plan

Plan Strategy

Focus transportation investments on corridors and intersection with the most serious crashes – *page 27*

Tier 1 Corridors



Tier 2 Corridors



Summary Information

Tier 1-2 Corridors

City Roadways

Tier 1 - 66%

8 miles

Tier 2 - 84%

17 miles

MDOT Roadways

Tier 1 - 34%

*4 miles

Tier 2 - 16%

3 miles

Tier 1 Intersections

E Ellsworth Rd and Platt Rd

E Huron St and Division St

E Liberty St and S Division St

Hill St and E University Ave

*Huron St and Main St

*Jackson Ave and Maple Rd

*N Main St and Kingsley St/Beakes St

*W Huron St and Chapin St/Third St

*W Huron St and First St

*Washtenaw Ave and Hill St

*Washtenaw Ave and Platt Rd

*Denotes MDOT owned roadway

Tier 2 Intersections

Ann Arbor Saline Rd and W Eisenhower Pkwy

E Eisenhower Pkwy and Stone School Rd

*E Huron St and Fifth Ave

*E Huron St and Fourth Ave

Glen Ave and E Ann St

Huron Pkwy and Glazier Way

*Jackson Rd and Highlake Ave

*N Main St and Depot St

*N Main St and Summit St

Packard St and E Stadium Blvd

*Denotes MDOT owned roadway

S State St and E Eisenhower Pkwy

S State St and Victors Way

S State St and W Ellsworth Rd

*W Huron St and Seventh St

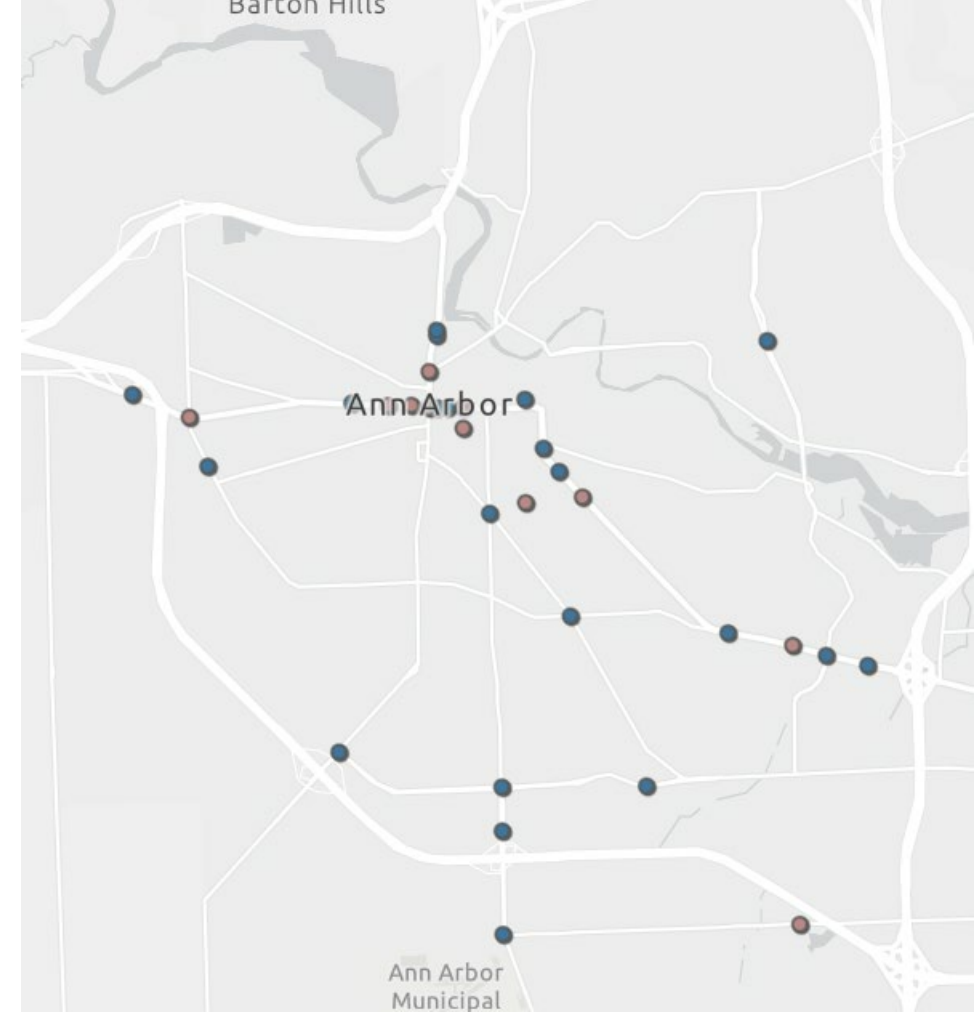
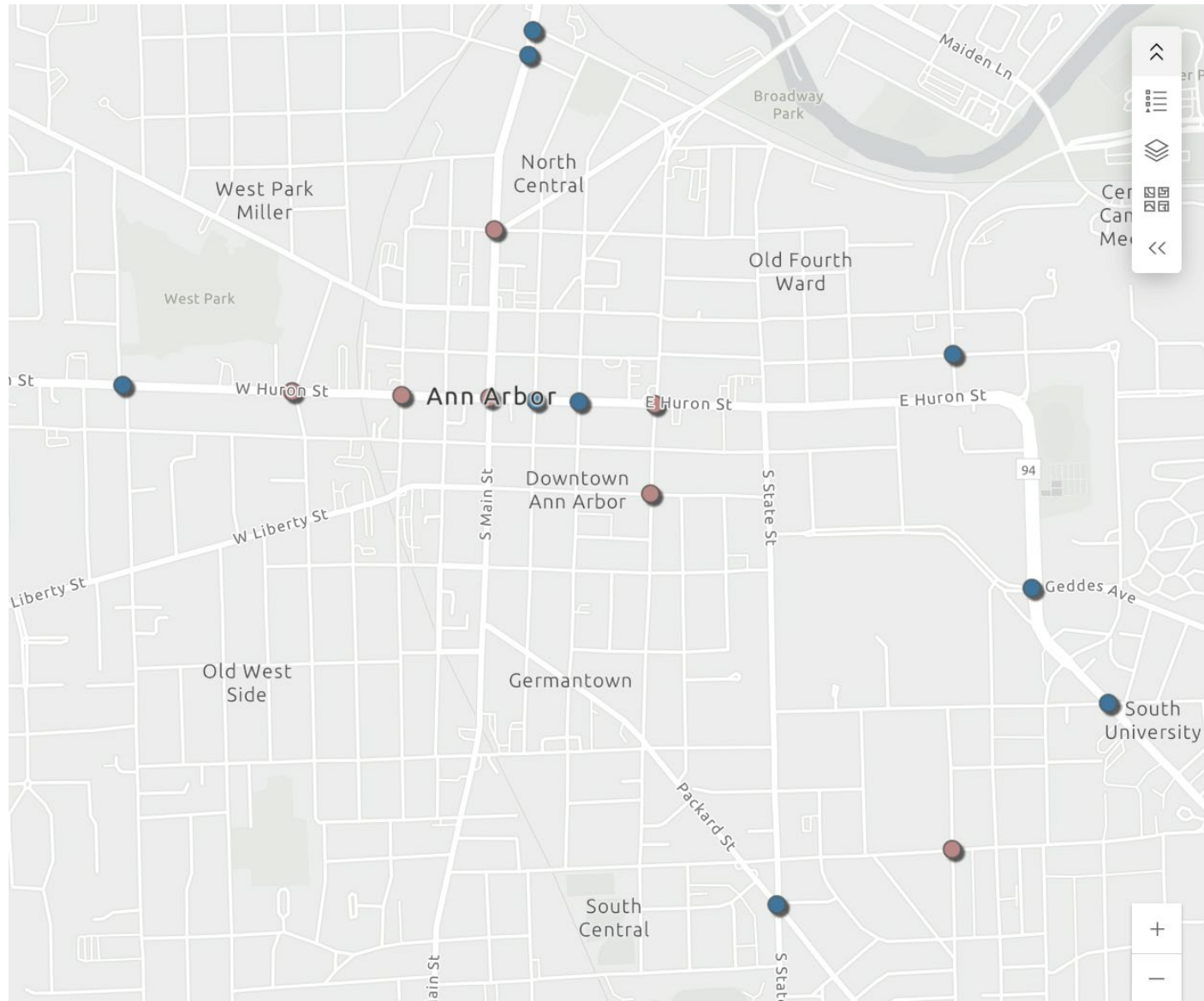
W Stadium Blvd and Thaler Ave

*Washtenaw Ave and Geddes Ave

*Washtenaw Ave and Huron Pkwy

*Washtenaw Ave and Manchester Rd/Sheridan Rd

*Washtenaw Ave and Pittsfield Blvd



Tier 1 = Red

Tier 2=Blue

Summary Information

Tier 1-2 Intersections

City Roadways

Tier 1 - 27%

3 of 11 on city streets

Tier 2 - 50%

10 of 20 on city streets

MDOT Roadways

Tier 1 - 72%

8 of 11 on MDOT roadway

Tier 2 - 50%

10 of 20 on MDOT roadway

Tier 1 vs. Tier 2

- Tier 1 corresponds to more fatal, AAPD crash investigations, and serious injury crashes than other streets
- Tier 2 corresponds to more crashes than the average street

Next Steps

- Methodology update in Appendix of Vision Zero Plan
- New CIP in 2026
- Utilize 2025 Tiers in planning studies
- Technical Update – no formal action needed

Resources of Interest

Transportation Survey

engage.a2gov.org/2025-transportation-survey

Safety Corridor Presentation

[September 2024 Legistar meeting details](#)

Vision Zero Plan

[Plan information](#)

Questions