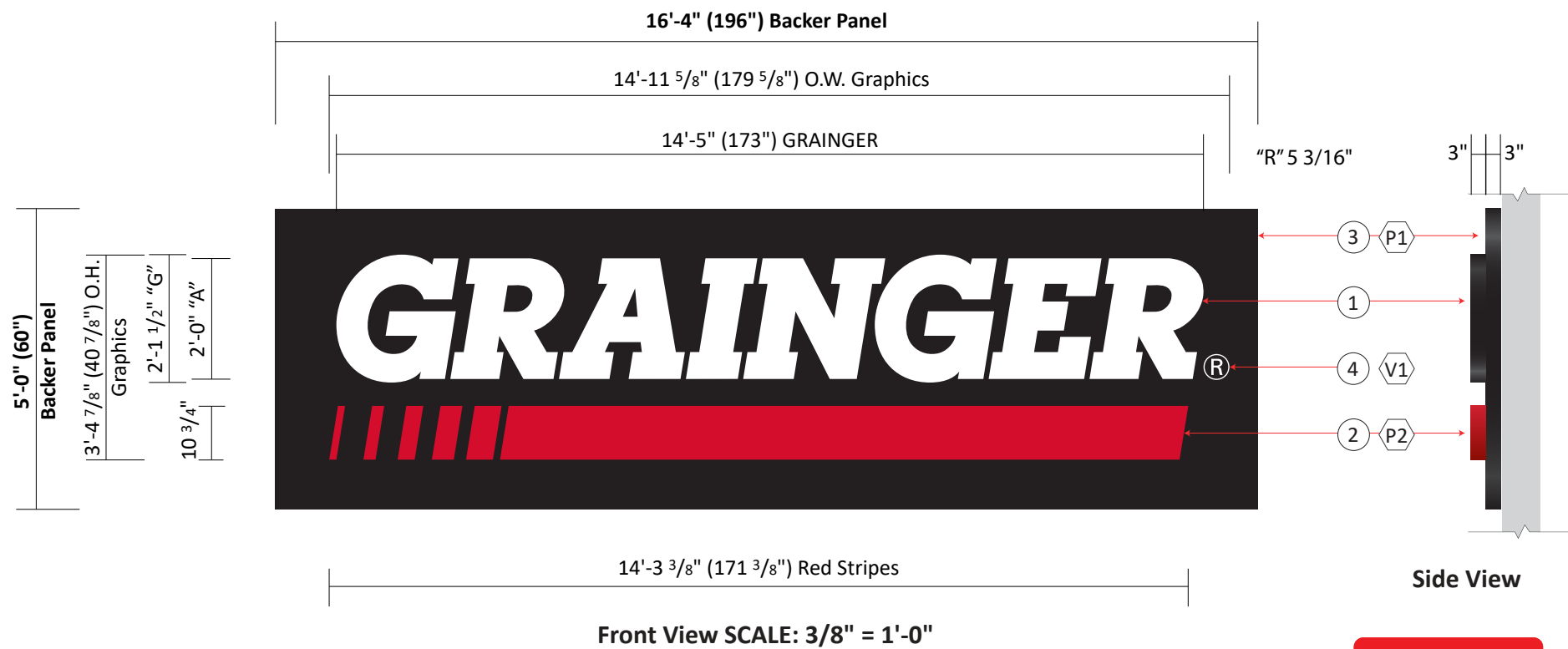


SG1 West Elevation: Illuminated Channel Letters mounted onto a Backer Panel



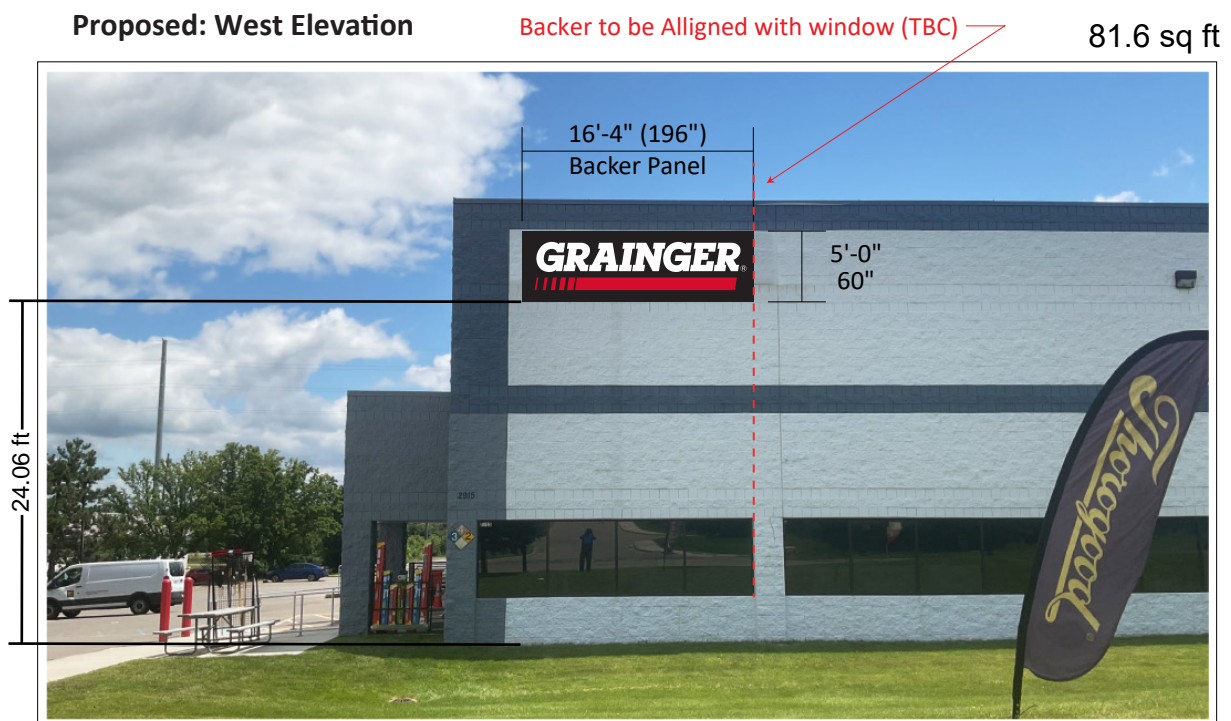
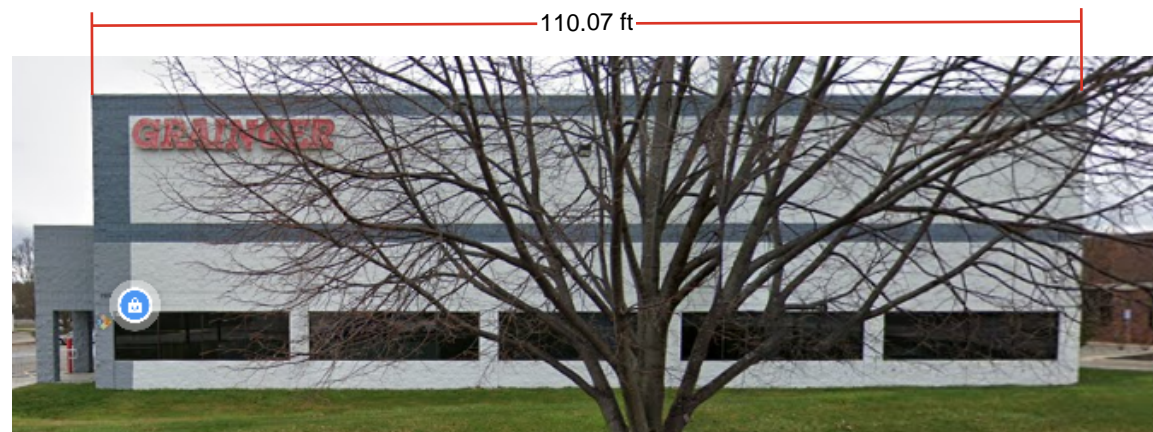
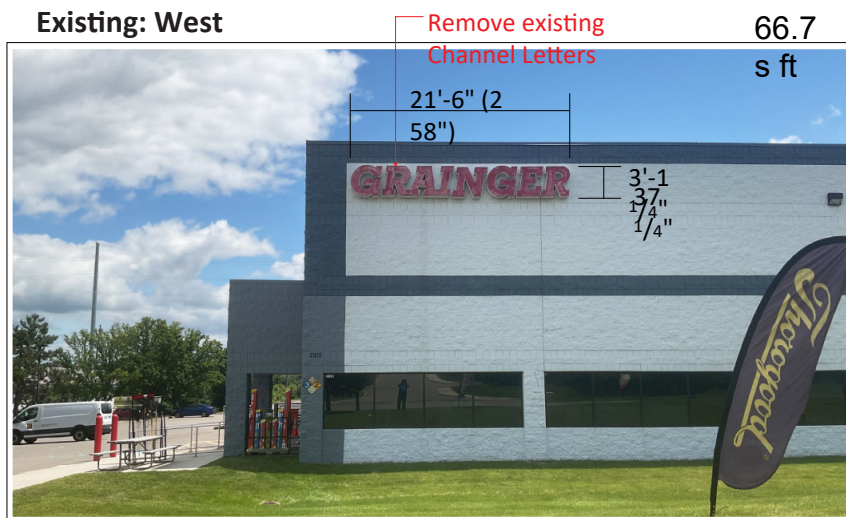
Specifications

One (1) New Set of Illuminated Channel Letters Mounted onto Backer Panel  
 One (1) New Non Illuminated Channel Underscore Mounted onto Backer Panel

- ① **GRAINGER Channel Letters:**  
 Translucent White Acrylic Sign Faces  
 1" Black Trim Cap Pre-Painted Black  
 3" Returns Pre-Painted Black  
 White LED's Illumination
- ② **Reverse Channel "Underscore":**  
 Aluminum Face Painted Red  
 Returns Painted Red  
 Non-Illuminated
- ③ **Backer Panel:**  
 3" (brake formed) aluminum backer (or equivalent)  
 Backer Panel Painted Matte Black.  
 Power supply in Backer.  
 Backer Mounted "flush" to wall.  
 Backer may be split for shipping  
 Will have visible seams
- ④ **Registration Mark - White Opaque vinyl graphics**  
 Construction & Mounting Method to be Determined by Technical Department

Colours

- V1  3M 7725-10 Opaque White
- P2  Painted Pantone 186C
- P1  Standard (Matte) Black paint (Urethane Enamel Finish)



Note: Size of signage in relation to the building is approximate. This photo mock-up is intended for Location purposes only and may not accurately represent the scale of the proposed signage to the building.

Project ID  
 KB2-60845

Grainger Ann Arbor 236  
 2915 Boardwalk St  
 Ann Arbor, MI, USA

Sign Item

SG1

Date: 08-07-2024  
 Scale: 3/8"=1'-0"  
 Contact: Kelly Beauchamp  
 Designer: D. Jurewicz

Revision Note

DJ 08-08-2024 Updated Channel Letters Returns & Trim Caps to be Pre-Painted Black (Standard).

Information Required for Production

Final dimensions subject to technical specifications.

Customer Approval

Signature

MM/DD/YYYY

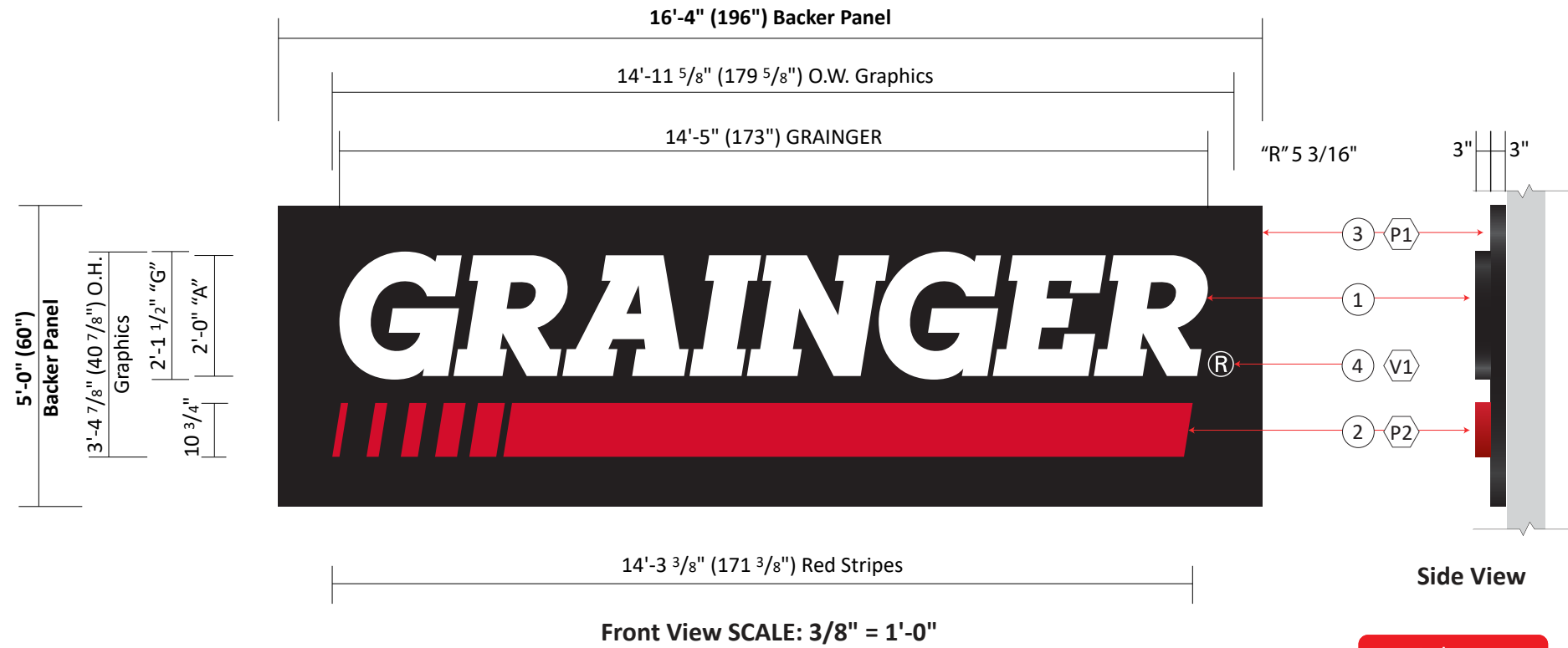
All rights reserved. The artwork depicted herein are copyrighted and are the exclusive property of Pattison ID and as such cannot be reproduced and/or distributed, in whole or in part, without written permission of Pattison ID.

It is the Customer's responsibility to ensure that the sign installation location is suitable to accept and support the installation of the signs being ordered. Notify Pattison ID immediately if further details are required.



1.866.635.1110  
 pattisonid.com

SG2 South Elevation: Illuminated Channel Letters mounted onto a Backer Panel



Specifications

One (1) New Set of Illuminated Channel Letters Mounted onto Backer Panel  
 One (1) New Non Illuminated Channel Underscore Mounted onto Backer Panel

- ① **GRAINGER Channel Letters:**  
 Translucent White Acrylic Sign Faces  
 1" Black Trim Cap Pre-Painted Black  
 3" Returns Pre-Painted Black  
 White LED's Illumination
- ② **Reverse Channel "Underscore":**  
 Aluminum Face Painted Red  
 Returns Painted Red  
 Non-Illuminated
- ③ **Backer Panel:**  
 3" (brake formed) aluminum backer (or equivalent)  
 Backer Panel Painted Matte Black.  
 Power supply in Backer.  
 Backer Mounted "flush" to wall.  
 Backer may be split for shipping  
 Will have visible seams
- ④ **Registration Mark - White Opaque vinyl graphics**  
 Construction & Mounting Method to be Determined by Technical Department

Colours

- V1  3M 7725-10 Opaque White
- P2  Painted Pantone 186C
- P1  Standard (Matte) Black paint (Urethane Enamel Finish)

Notes from Survey:

Height of Beige area behind current letters - 48" h  
 Wall colour match - SW7103 White Tail  
 Recommend both signs installed on raceways or backers  
 Signs were installed and the Drop ceilings were added on the interior making the wiring inaccessible. Power supplies cannot be on the interior - Must be in raceway or backer.

Existing: South Elevation



Proposed: South Elevation



Note: Size of signage in relation to the building is approximate. This photo mock-up is intended for Location purposes only and may not accurately represent the scale of the proposed signage to the building.

Project ID  
 KB2-60845

Grainger Ann Arbor 236  
 2915 Boardwalk St  
 Ann Arbor, MI, USA

Sign Item

SG2

Date: 08-07-2024  
 Scale: 3/8"=1'-0"  
 Contact: Kelly Beauchamp  
 Designer: D. Jurewicz

Revision Note

DJ 08-08-2024 Updated Channel Letters Returns & Trim Caps to be Pre-Painted Black (Standard).

Information Required for Production

Final dimensions subject to technical specifications.

Customer Approval

Signature

MM/DD/YYYY

All rights reserved. The artwork depicted herein are copyrighted and are the exclusive property of Pattison ID and as such cannot be reproduced and/or distributed, in whole or in part, without written permission of Pattison ID.

It is the Customer's responsibility to ensure that the sign installation location is suitable to accept and support the installation of the signs being ordered. Notify Pattison ID immediately if further details are required.



1.866.635.1110  
 pattisonid.com