


# 2021 – 2024 Roads and Non-Motorized Millage

ANN  
DRIVERS  
FOR PED  
CURRENT  
RECORD

PROJECT FUNDED BY  
RESIDENTS OF  
**WASHTENAW  
COUNTY**



# Agenda

PROJECT FUNDED BY  
RESIDENTS OF  
**WASHTENAW  
COUNTY**



- I. Welcome
- II. Background
- III. 2021 – 2024 Millage
- IV. Q and A

# Today's Speakers

PROJECT FUNDED BY  
RESIDENTS OF  
**WASHTENAW  
COUNTY**



**Sheryl Soderholm Siddall**  
Managing Director



**Coy Vaughn**  
Director





Background

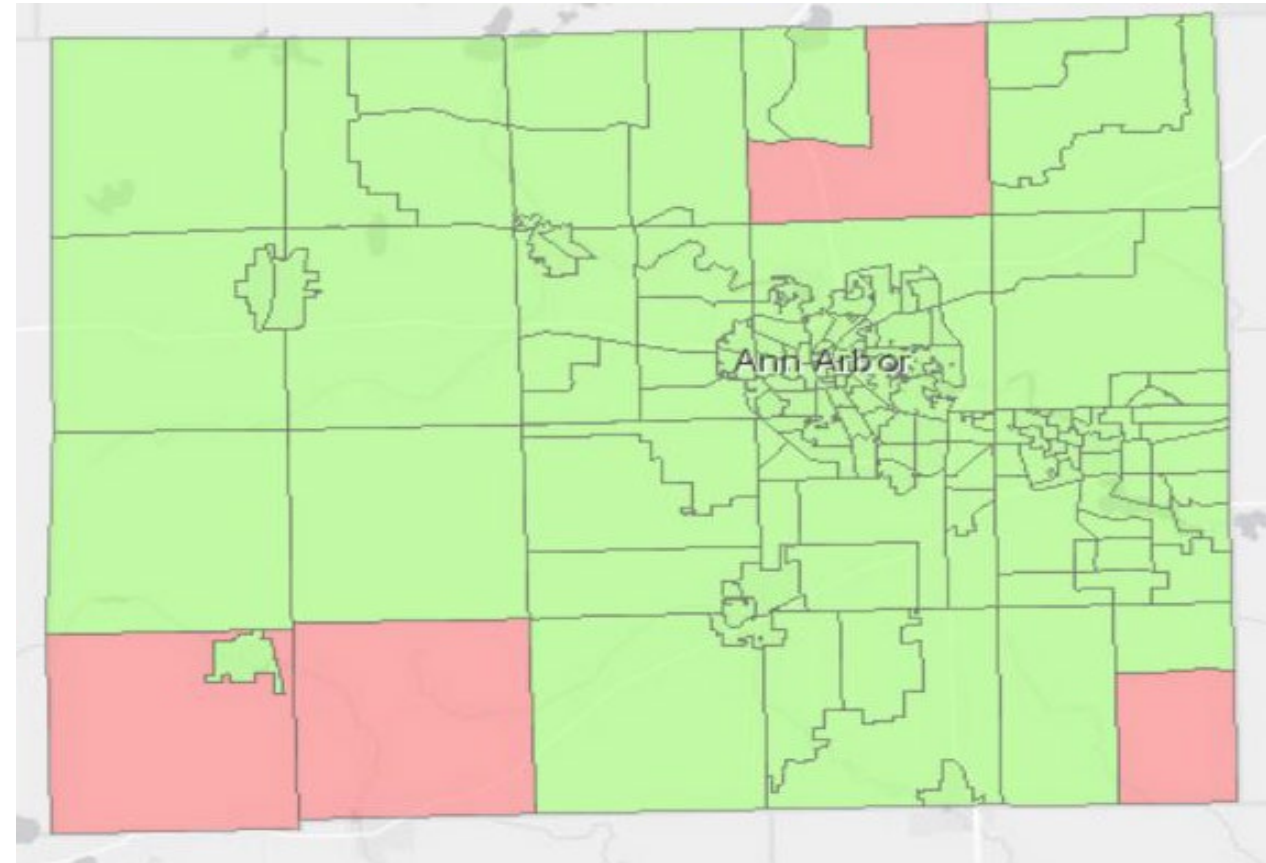
# 2017 – 2020 Millage

PROJECT FUNDED BY  
RESIDENTS OF  
**WASHTENAW  
COUNTY**




## • Details

- Four-year, 0.5 mill
- 20% to non-motorized projects
- Campaigned on specific project plan
- Approved by 71% of voters in November 2016!
  - 137 out of 141 precincts voted YES!



# 2017 – 2020 Millage

PROJECT FUNDED BY  
RESIDENTS OF  
**WASHTENAW  
COUNTY**




## Distribution of 0.5 mill revenue

<b>Agency</b>	<b>Approx. Annual Distribution</b>
Washtenaw County Road Commission	\$3.3 million
Cities and Villages	\$2.5 million
Washtenaw County Parks & Recreation Commission (for non-motorized facilities)	\$1.5 million
<b>Total</b>	<b>\$7.3 million</b>

# 2017 – 2020 Millage

- WCRC Results (so far)
  - 110+ road projects
  - 170+ miles improved
  - 14 non-motorized projects in cooperation with WCPARC

# 2017 – 2020 Millage

PROJECT FUNDED BY  
RESIDENTS OF  
**WASHTENAW**  
COUNTY 

- City of Ann Arbor results (so far)
  - 15 road projects
  - More than 7.5 miles improved
  - Crosswalk, shared-use path and RRFB installations each year



# Saline-Milan Rd (York Twp)

PROJECT FUNDED BY  
RESIDENTS OF  
**WASHTENAW**  
COUNTY



Between Moon Rd and Judd Rd

# MacArthur Blvd (Superior Twp)


PROJECT FUNDED BY  
RESIDENTS OF  
**WASHTENAW**  
COUNTY



Between Harris Rd and Wiard Rd

# Lima Center Rd (Lima/Dexter Twps)

PROJECT FUNDED BY  
RESIDENTS OF  
**WASHTENAW**  
COUNTY



Between Dexter-Chelsea Rd and Island Lake Rd

# Platt Rd (City of Ann Arbor)

PROJECT FUNDED BY  
RESIDENTS OF  
**WASHTENAW**  
COUNTY



Between E. Ellsworth Rd and Packard St

# Traverwood Rd (City of Ann Arbor)

PROJECT FUNDED BY  
RESIDENTS OF  
**WASHTENAW**  
COUNTY



Between Plymouth Rd and S. Huron Pkwy

# Stone School Rd (City of Ann Arbor)

PROJECT FUNDED BY  
RESIDENTS OF  
**WASHTENAW**  
COUNTY



Between Packard St and I-94

# B2B in Scio Township

PROJECT FUNDED BY  
RESIDENTS OF  
**WASHTENAW  
COUNTY**



# Border-to-Border Trail: Overview and Phasing



## "The Huron River Greenway"

Ypsilanti - Ann Arbor - Dexter - Lakelands Trail

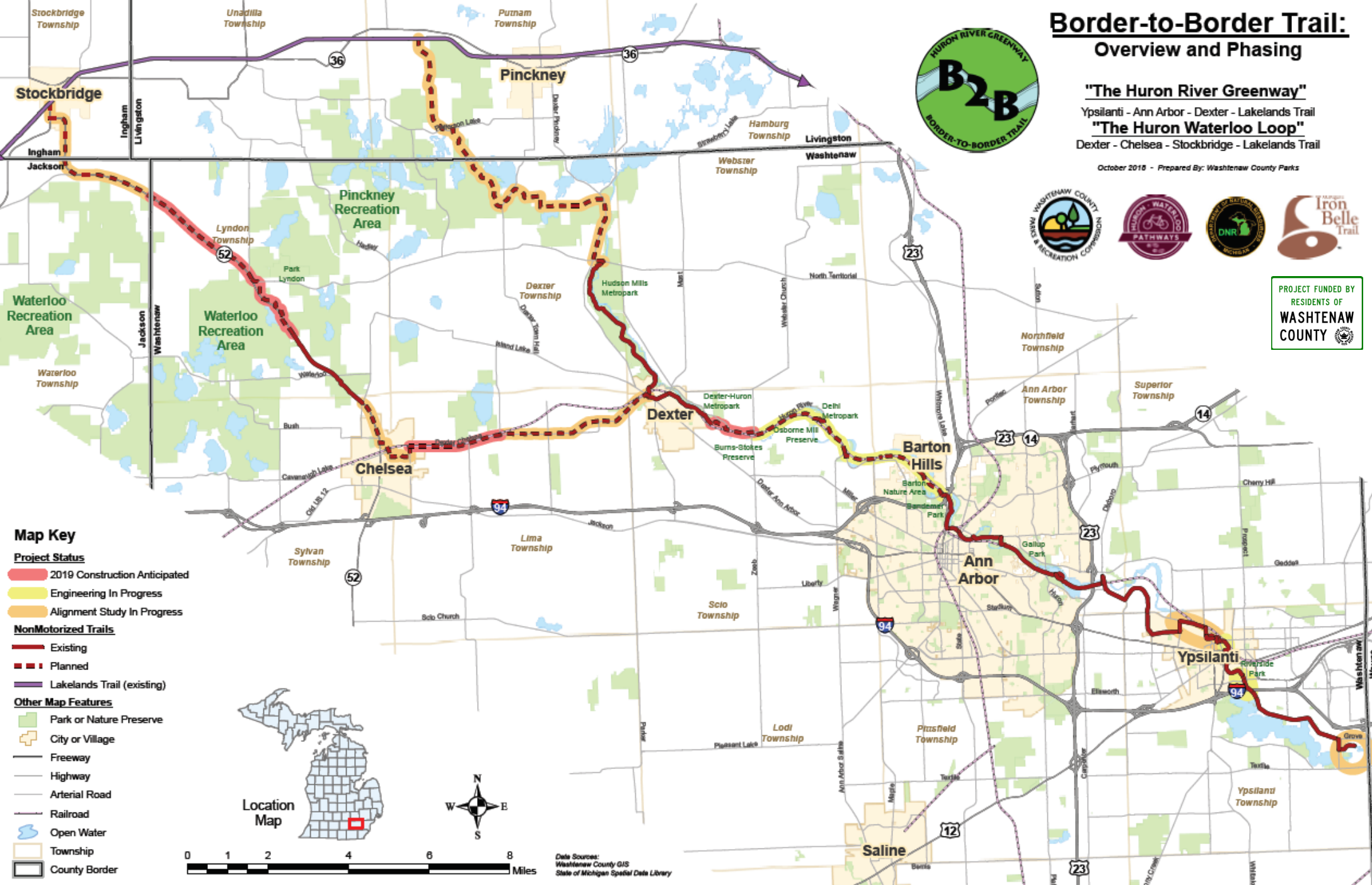
## "The Huron Waterloo Loop"

Dexter - Chelsea - Stockbridge - Lakelands Trail

October 2018 - Prepared By: Washtenaw County Parks



PROJECT FUNDED BY  
RESIDENTS OF  
**WASHTENAW  
COUNTY**



### Map Key

#### Project Status

- 2019 Construction Anticipated
- Engineering In Progress
- Alignment Study In Progress

#### NonMotorized Trails

- Existing
- Planned
- Lakelands Trail (existing)

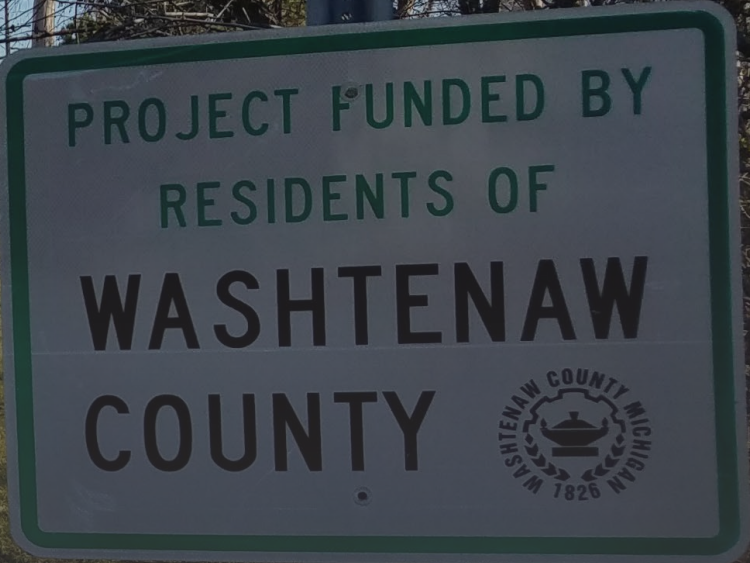
#### Other Map Features

- Park or Nature Preserve
- City or Village
- Freeway
- Highway
- Arterial Road
- Railroad
- Open Water
- Township
- County Border



Data Sources:  
Washtenaw County GIS  
State of Michigan Spatial Data Library



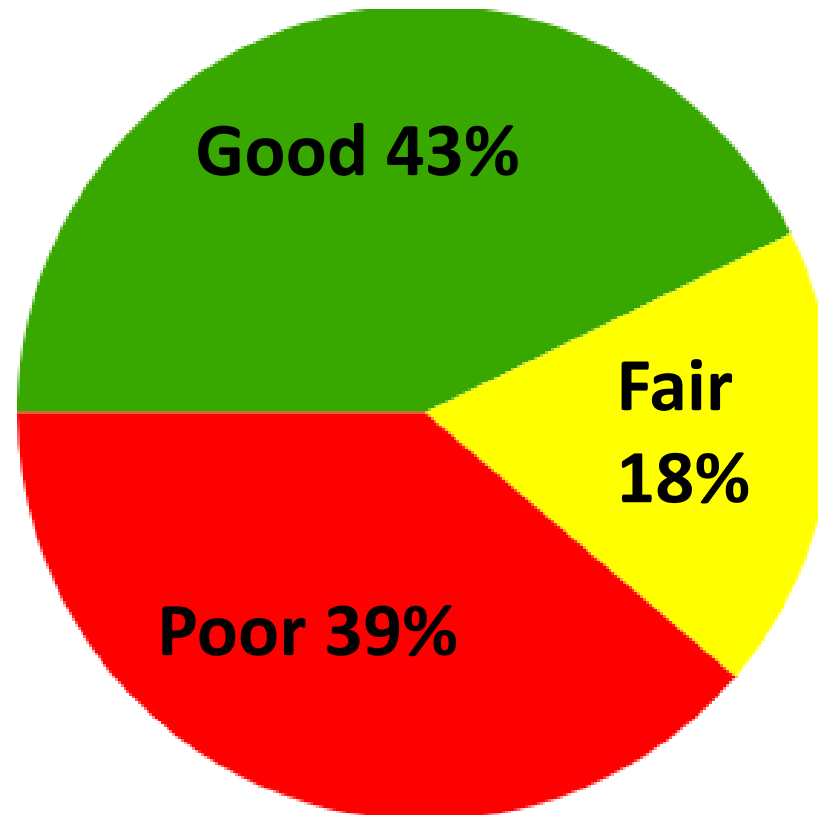


2021 – 2024 Millage

# Need for County-Wide Millage

State funding has improved but...


Washtenaw County Primary Paved Roads (~510 Miles)



To get to 100%  
**good** today on  
**primary system**  
= \$52.7 million

# 2021 – 2024 Millage

PROJECT FUNDED BY  
RESIDENTS OF  
**WASHTENAW  
COUNTY**



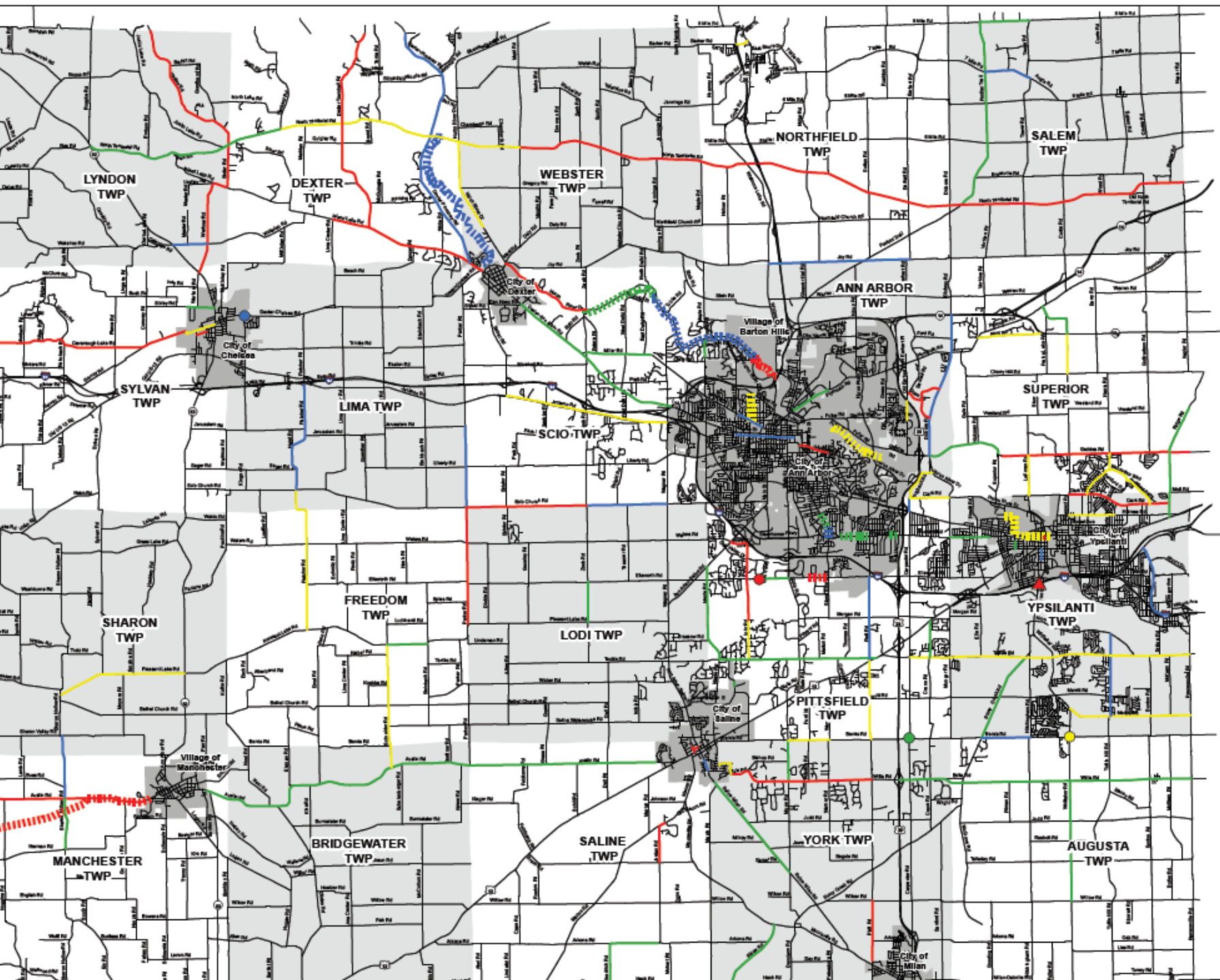
- Renew and restore
- 0.5 mill
- 20% to fund non-motorized projects
- Approximately \$8.9 million per year

**On the August 4, 2020 ballot**


# 2021 – 2024 Millage

## Distribution of 0.5 mill revenue

<b>Agency</b>	<b>Approx. Annual Distribution</b>
Washtenaw County Road Commission	\$4 million
Cities and Villages	\$3.1 million
Washtenaw County Parks and Recreation Commission (for non-motorized paths)	\$1.8 million
<b>Total</b>	<b>\$8.9 million</b>



PROJECT FUNDED BY  
RESIDENTS OF  
**WASHTENAW  
COUNTY**



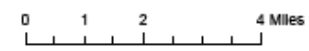
**Washtenaw County  
Millage Projects  
2021-2024**  
Road  
and Non-Motorized  
Projects

**Road Projects**

- 2021
- 2022
- 2023
- 2024
- Road Intersection Project

**Non-Motorized Projects**

- ▬▬▬ 2021
- ▬▬▬ 2022
- ▬▬▬ 2023
- ▬▬▬ 2024
- ▲ Non-Motorized Project



Updated: May 1, 2020

N

# WCRC Road Projects

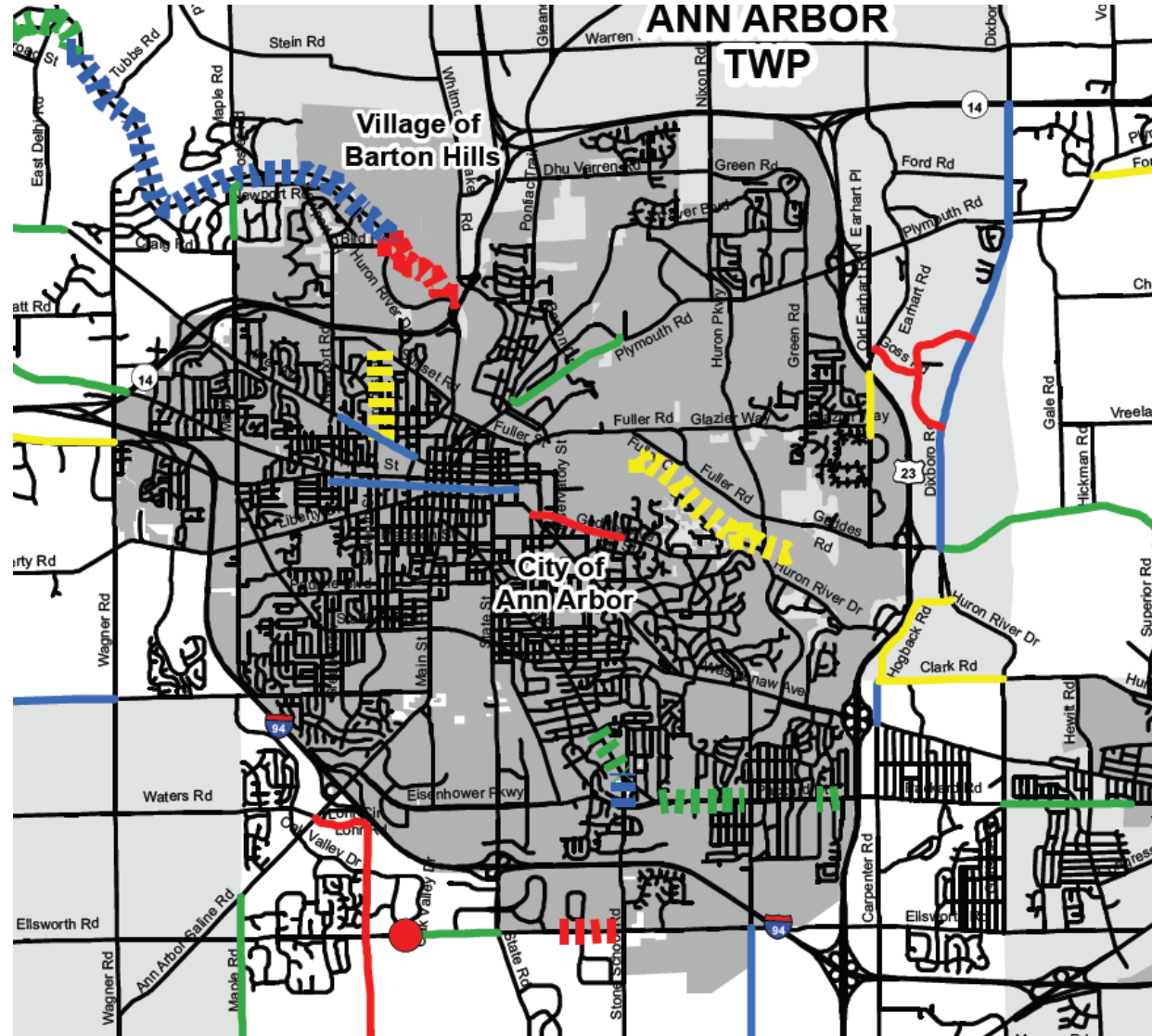
Type of Work	Miles
Chip seal	160
Mill and overlay	26
Pulverize and resurface	19
Limestone resurfacing	7
Concrete pavement repairs	4
Pave unpaved roads	2
<b>Total</b>	<b>218 miles</b>
Intersections	3
<b>Estimated cost</b>	<b>\$17.9 million</b>

# Cities and Villages

- Approximately \$3.1 million per year will be distributed to cities and villages based on revenue collected
  - *Example:* City of Ann Arbor ~\$2.4 million per year
- Cities/Village pick their own road and non-motorized projects
- Ongoing planning process

# City of Ann Arbor Projects


PROJECT FUNDED BY  
RESIDENTS OF  
**WASHTENAW  
COUNTY**





# Non-Motorized Projects

PROJECT FUNDED BY  
RESIDENTS OF  
**WASHTENAW  
COUNTY**



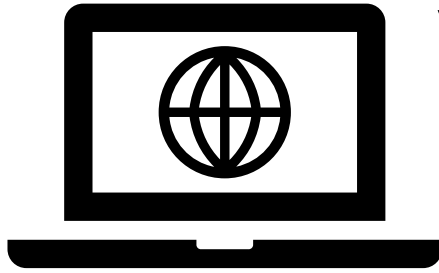

Project Type	Estimated Cost
10 pathway projects	\$4.8 million
Connecting Communities Grants	\$2 million
<b>Total</b>	<b>\$6.8 million</b>

**\*Millage funds will help leverage more than \$13 million in non-motorized projects across the county**



# Learn More

PROJECT FUNDED BY  
RESIDENTS OF  
**WASHTENAW  
COUNTY**

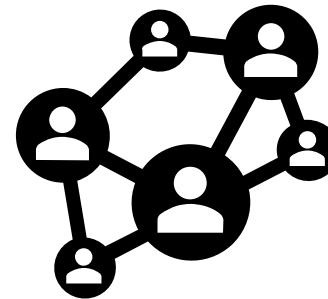


Visit <https://bit.ly/washtenawroadsandpathsmillage>

- Interactive project map
- Detailed project lists
- FAQs



WCRC @ (734) 761-1500  
WCPARC @ (734) 971-6337



Follow WCRC and WCPARC  
on social media