

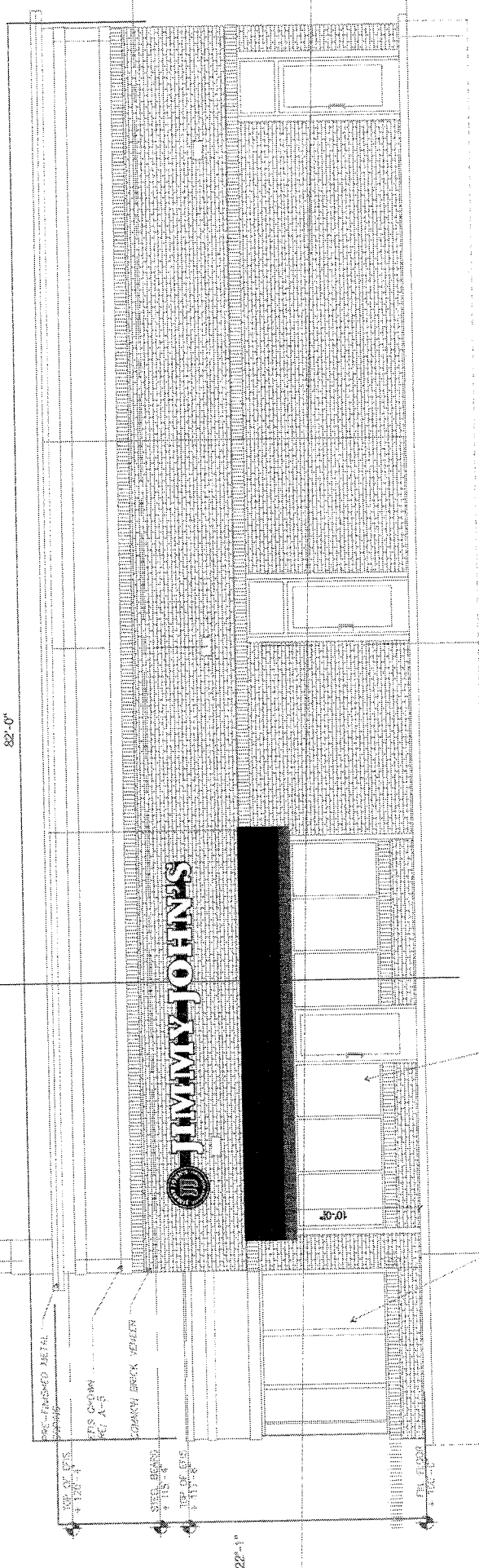
A

B

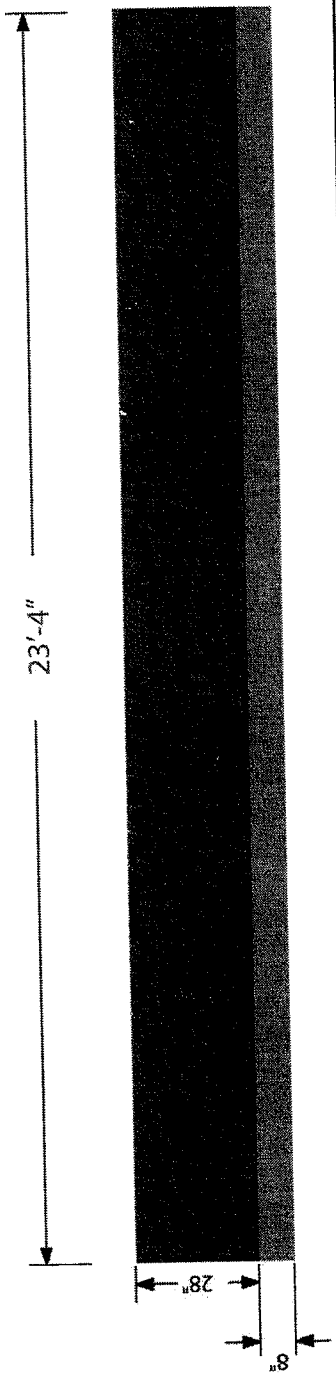
1
A-4

C


82'-0"



SOUTH ELEVATION



This is an original unpublished drawing confidentially submitted for your personal use in connection with a project being planned for you by Bendsen Signs and Graphics, Inc. It is not to be shown or described to either you or it to be used reproduced, copied or exhibited in any fashion.

Designer:  Date: 04-16-15
 Signer & Graphics, Inc. Sketch No. ANHR 301

For: Jimmy John's Gourmet Sandwiches - Ann Arbor, MI
 Quantity: One (1) set of internally illuminated channel letters mounted to black raceway
 Vinyl Colors: 3630-22 Black and 3630-83 Regal Red
 Non-Illuminated awning using Sunbrella 4608 Black and 4666 Red material

Bendsen
 Signs & Graphics, Inc.
 2501 N. Woodford St. Decatur, IL 62526
 PH: 217-877-2345
 FAX: 217-877-2347

C

B

A

82'-0"

22'-1"

JIMMY JOHN'S

6" DIA STEEL PIPE SILLARDS
(PART)

NORTH ELEVATION

This is an original unpublished drawing confidentially submitted for your personal use in connection with a project being planned for you by Bendsen Signs and Graphics, Inc. It is not to be shown or described to other nor is it to be used reproduction copied or exhibited in any fashion.



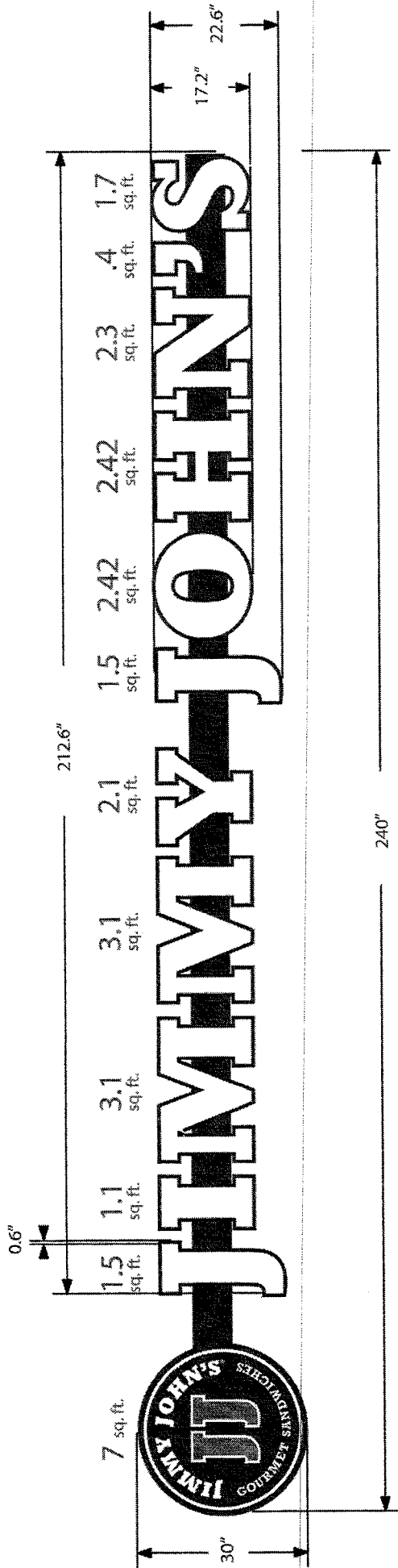
Designer: *[Signature]*
Date: 10/16/15
Sketch No. AMHR 304

For: Jimmy John's Gourmet Sandwiches - Ann Harbor, MI
Quantity: One (1) set of internally illuminated channel letters mounted to black raceway
Vinyl Colors: 3630-22 Black and 3630-83 Regal Red

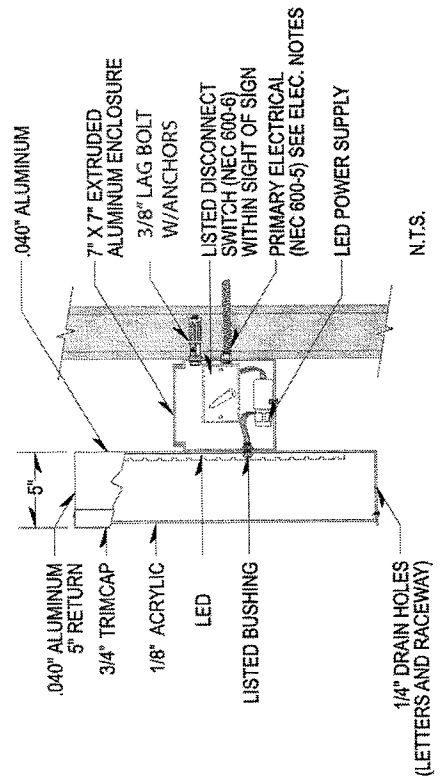
PH: 217-877-2348
FAX: 217-877-2347



2501 N. Woodford St. Deatur, IL 62526



28.64 Sq. Ft.




POWER SUPPLY	ADVANCE 60 W POWER SUPPLY
KICKER MATERIAL	ALUMINUM
SCREWS	HGT. TO BE DETERMINED SIZE #8 X 1/2" PHILLIPS HD. COLOR TO MATCH TRIMCAP
MOUNTING	INTERNAL EXTERNAL
SWITCH	DISCONNECT/TOGGLE 3/8" LAG BOLT W/ANCHORS


LED (US LED)	PMT-3-12-W
FACE	WHITE 1/8" THICKNESS 1/2" ALUMINUM ANCHOR AROUND THE LETTER BACKS
RETURN	5" PER STYLE
RETAINER	BLACK PRE-COAT .040" X 5.3" COIL 3/4"
BACKS	BLACK TRIM CAP ALUMINUM
RACEWAY	.063" 7" X 7" X .063"
MOUNTING	1/4" X 2" ALUM. BAR

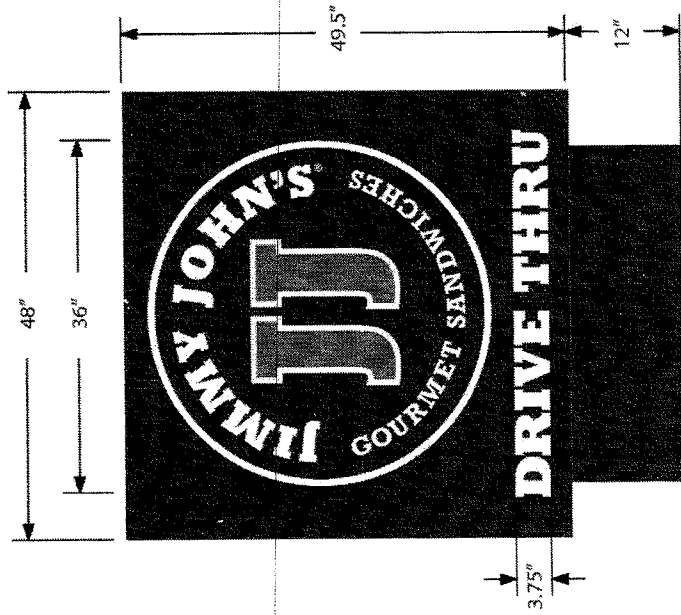
*SPRT DISCONNECT SWITCH LOCATE ON RACEWAY.
*2. KEEP HOLES FOR LETTER REQUIRED (SEE #11).
*3. ALL ELECTRICAL OUTS LOCATED FOR RACEWAY OR REMOTE APPLICATION.
*CAULK REQUIRED.

This is an original unpublished drawing confidentially submitted for your personal use in connection with a project being planned for you by Bendsen Signs and Graphics, Inc. It is not to be shown, reproduced to other nor is it to be used reproduced, copied or exhibited in any fashion.

Designer:  Date: 11-2-14
Sketch No. ANHBR-303A
Bendsen Signs & Graphics, Inc.

For: Jimmy John's Gourmet Sandwiches - Ann Harbor, MI
Quantity: Two (2) sets of internally illuminated channel letters mounted to black raceways
Vinyl Colors: 3630-22 Black and 3630-83 Regal Red
Non-Illuminated awning using Sunbrella 4608 Black and 4666 Red material


Bendsen Signs & Graphics, Inc.
2901 N. Woodford St. Decatur, IL 62526
PH: 217-877-2345
FAX: 217-877-2347



16.5 s. ft.

This is an original unpublished drawing confidentially submitted for your personal use in connection with a project being planned for you by Bendsen Signs and Graphics, Inc. It is not to be shown or described to other nor is it to be used, reproduced, copied or exhibited in any fashion.



Designer: *[Signature]*
 Date: 04-16-15
 Sketch No. ANHBR 3053

For: Jimmy John's Gourmet Sandwiches - Ann Arbor, MI
 Quantity: One (1) internally illuminated Monument sign
 Vinyl Colors: 3630-22 Black and 3630-83 Regal Red

PH: 217-877-2948 (Decatur)
 PH: 217-238-1888 (Champaign)
 FAX: 217-877-2347



Signs & Graphics, Inc.

2901 N. Woodford St. Decatur, IL 62526
 301 N. Neil St., Suite 400 Champaign, IL 61820

528'

82.5'

CROSS-HATCH
HATCH
HAMMER
HEAD AREA

transformer pad
location to be
verified with
utility co.

menu
speaker
17.00 s.f. gross
17' spaces

8' booth spaces
with barrier 3'
passage 0-6'
for chairs

continuous covered
concrete raised 4"
above pavement

light pole

light pole

light pole

light pole

light pole

light pole

light pole

light pole

light pole

light pole

light pole

light pole

light pole

light pole

light pole

light pole

light pole

light pole

light pole

light pole

light pole

light pole

light pole

light pole

light pole

light pole

light pole

light pole

light pole

light pole

light pole

light pole

light pole

light pole

light pole

light pole

light pole

light pole

light pole

light pole

light pole

light pole

light pole

light pole

light pole

light pole

light pole

light pole

light pole

total
0.750 s.f. net
24' spaces

light pole

light pole

light pole

light pole

light pole

light pole

light pole

light pole

light pole

light pole

light pole

light pole

light pole

light pole

light pole

light pole

light pole

light pole

light pole

light pole

light pole

light pole

light pole

light pole

light pole

light pole

light pole

light pole

light pole

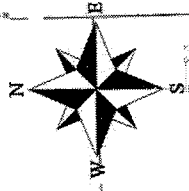
light pole

light pole

light pole

ALL SIDEWALKS ARE TO BE KEPT MAINTAINED IN GOOD REPAIR
FOR THE ENTIRE DURATION OF THE PROJECT. THE
ISSUANCE OF THE FIRST CERTIFICATE OF OCCUPANCY
FOR THIS SITE, ALL EXISTING SIDEWALKS IN NEED OF REPAIR MUST
BE REPAIRED IN ACCORDANCE WITH CITY STANDARDS

PROPOSED
TIM
HORTONS



This is an original unpublished drawing confidentially
submitted for your personal use in connection with a
project being planned for you by Bendsen Signs and
Graphics, Inc. It is not to be shown or described to
other nor is it to be used reproduced, copied or ex-
hibited in any fashion.

Designer:
Date: 04/20/15
Signs & Graphics, Inc. Sketch No. ANHBR_305C

For: Jimmy John's Gourmet Sandwiches - Ann Arbor, MI
Quantity: One (1) internally illuminated pylon sign
Vinyl Colors: 3630-22 Black and 3630-83 Regal Red

PH: 217-877-2345 (Decatur)
PH: 217-238-1898 (Champaign)
FAX: 217-877-2347



2801 N. Woodford St., Decatur, IL 62526
301 N. Neil St., Suite 400 Champaign, IL 61820