

RideLines RideLines

October 2013

What's Proposed?

Later weekday service on:

- 1 2 3 4 5 6
- 7 8 9 10 11 12
- 13 14 15 16 17 18
- 20 22 33

More weekend service on:

- 1 2 3 4 5 6
- 7 8 9 10 11 12
- 13 14 15 16 17 18
- 20 22

Redesigned Routes for more Direct Service:

- 9 2 new routes
- 10 2 new routes
- 11 2 new routes
- 15 2 new routes
- 20 2 new routes
- 12 18 3 new routes
- 33 Redesign

Ann Arbor & Ypsilanti Area Benefits

- More destinations
- More frequent service
- More direct service

How to Give Us Your Feedback

You can find copies of maps and timetables for the 5-year proposed improvement program at movingyouforward.org, or you can contact TheRide using one of the methods below. Copies are available in alternative formats upon request.

Email: TellUs@TheRide.org
(subject line should read: "Service Proposals")

Phone: Call us at 734.794.1880

Mail: TheRide Service Proposals
2700 S Industrial Hwy. Ann Arbor, MI 48104

Come to one of 15 public meetings.

Seniors and People with Disabilities

Seniors and people with disabilities will greatly benefit from extended hours and access to more destinations because of improvements to the fixed route bus network.

Access to more destinations like:

- Pittsfield Branch, Ann Arbor Library
- Ypsilanti District Library
- Quality 16 Movie Theater
- Wal-Mart
- Meijer; Carpenter Road
- Kroger, Whittaker Road

In addition to these benefits, seniors and people with disabilities will enjoy improvements to Dial-A-Ride Services such as:

- Later weekday service hours
- Later weekend service hours

How to Give Us Your Feedback

If you can't make it to one of our public meetings, don't worry. We still want to hear from you! Please submit your comments to us between 10/11 and 11/15/13 by:

Email: TellUs@TheRide.org
(subject line should read: "Service Proposals")

Phone: Call us at 734.794.1880

Mail: TheRide Service Proposals
2700 S Industrial Hwy.
Ann Arbor, MI 48104

Come to one of 15 public meetings.

You can find copies of maps and timetables for the 5-year proposed improvement program at movingyouforward.org, or you can contact TheRide using one of the above methods. Copies are available in alternative formats upon request.

A summary of all comments will be provided to the AAATA Board of Directors before a decision is made on adopting the improvements and a funding proposal.

Service improvements proposed for:

Routes 1, 2, 3, 4, 5, 6, 7, 8, 9, 10, 11, 12, 13, 14, 15, 16, 17, 18, 20, 22, 33

Join us for public meetings to learn more!



Ann Arbor Area
Transportation Authority
734.996.0400
www.TheRide.org
@CatchTheRide



Join us for public meetings to learn about proposed service improvements as a result of your input.

We value your input immensely. We hope you'll join us at one of the meetings listed below to learn more about proposed service improvements for the Ann Arbor area. If you can't make it, we still want to hear from you: Email us at TellUs@TheRide.org.

10/17
4-6pm
(before AAATA Board Mtg.)
Ann Arbor Library — Main Branch
4th Floor
343 S 5th Ave
Ann Arbor, MI 48104

10/22
7-8:45pm
Traverwood Library Branch
3333 Traverwood Dr
Ann Arbor, MI 48105

10/23
6:30-8:30pm
Peace Neighborhood Ctr
1111 N Maple Rd
Ann Arbor, MI 48103

10/28
4-6pm
Ann Arbor Area Transportation Authority
2700 S Industrial
Ann Arbor, MI 48104

10/29
11:30am-1pm
Michigan League
Vandenberg Rm
911 N University Ave
Ann Arbor, MI 48109

11/5
6:30-8:30pm
Ypsilanti Twp Hall
7200 S Huron River Dr
Ypsilanti, MI 48197

11/6
5:30-7:30pm
Tappan Middle School
2251 E Stadium Dr
Ann Arbor, MI 48104

11/7
6-8pm
Clark Community Ctr
2025 E Clark Rd, Rm 201
Ypsilanti Twp, MI 48197

11/9
10am
Hamilton Crossing Mtg Rm
Heritage Park Neighborhood
Association
596 Hamilton St
Ypsilanti, MI 48197

11/12
6-8pm
Mallets Creek Library Branch
3090 E Eisenhower Pkwy
Ann Arbor, MI 48108

11/13
11:30am-1pm
U-M Towsley Conf Ctr
Sheldon Auditorium
1301 Catherine Rd
Ann Arbor, MI 48109

11/14
10am-12pm
Ypsilanti Senior Ctr
1015 N Congress St
Ypsilanti, MI 48197

11/14
7-9pm
SPARK — Ypsilanti Office
215 W Michigan Ave
Ypsilanti, MI 48197

You told us. We listened. Now is the time!

Join us for public meetings to learn about proposed service improvements as a result of your input.



10/17

4-6pm

(before AAATA Board Mtg.)

Ann Arbor Library — Main Branch
4th Floor
343 S 5th Ave
Ann Arbor, MI 48104

10/22

7-8:45pm

Traverwood Library Branch
3333 Traverwood Dr
Ann Arbor, MI 48105

10/23

6:30-8:30pm

Peace Neighborhood Ctr
1111 N Maple Rd
Ann Arbor, MI 48103

10/28

4-6pm

Ann Arbor Area Transportation
Authority
2700 S Industrial
Ann Arbor, MI 48104

10/29

11:30am-1pm

Michigan League
Vanderberg Rm
911 N University Ave
Ann Arbor, MI 48109

11/5

6:30-8:30pm

Ypsilanti Twp Hall
7200 S Huron River Dr
Ypsilanti, MI 48197

11/6

5:30-7:30pm

Tappan Middle School
2251 E Stadium Dr
Ann Arbor, MI 48104

11/7

6-8pm

Clark Community Center
2025 E Clark Rd, Rm 201
Ypsilanti Twp, MI 48197

11/9

10am

Hamilton Crossing Mtg Rm
Heritage Park Neighborhood
Association
596 Hamilton St
Ypsilanti, MI 48197

11/14

7-9pm

SPARK — Ypsilanti Office
215 W Michigan Ave
Ypsilanti, MI 48197

11/12

6-8pm

Mallets Creek Library Branch
3090 E Eisenhower Pkwy
Ann Arbor, MI 48108

11/13

11:30am-1pm

U-M Towsley Conf Ctr
Sheldon Auditorium
1301 Catherine Rd
Ann Arbor, MI 48109

11/14

10am-12pm

Ypsilanti Senior Ctr
1015 N Congress St
Ypsilanti, MI 48197

Can't make it to a meeting? No worries. Email TellUs@TheRide.org.

URBAN CORE TRANSIT IMPROVEMENTS





What's in it for 1st Ward?

Improving our community's public transit service provides **more value to more riders and increases the benefits to all residents**—including public safety, infrastructure savings, economic development and environmental quality.

- Catch a late movie at the *Michigan Theater*
- Your kids head to Olsen Park *safely on their own*
- Enjoy the Farmers Market in Kerrytown without the hassle of parking

IMPROVED:

1 Pontiac - Dhu Varren

- Weekdays every 30-60 min*
- Service until 11:45pm (now 10:45pm)
- Weekends until 10:45pm Sat. & 7:45pm Sun. (now 6:45pm)

Community HS Arrowwood Hills Traverwood Library Traver Village North Campus



2 Plymouth

- Weekday buses every 5-30 min*
- Service until 11:45pm (now 10:46pm)
- Weekends until 11:49pm Sat. & 7:13pm Sun. (now 6:15pm)

Downtown Ann Arbor Community HS North Campus U-M Hospital Cleary University Glacier Hills Traver Village Clague Middle School



3 Huron River

- Weekday buses every 30-60 min*
- Service until 11:15pm (now 10:15pm)

Downtown Ann Arbor VA Hospital North Campus Huron HS WCC St. Joe's EMU Downtown Ypsi



13 Newport

- Weekday buses every 30-60 min*
- Service until 8:45pm (now 6:45pm)
- Weekends until 6:45pm Sat. **New!**

Downtown Ann Arbor Kerrytown Forsythe Middle School Rudolf Steiner School Bird Hill



17 Amtrak - Depot St.

- Weekday buses every 30-60 min*
- Service until 11:59pm (now 10pm)
- Weekends until 9pm Sat. & 6pm Sun. (now 6pm)

Downtown Ann Arbor Kerrytown City Hall U-M North Quad Community HS Amtrak Downtown Ann Arbor



NEW!

(G) North Maple Connector

- Weekday buses every 30-60 min*
- Service until 11:15pm (now 10:15pm)
- Weekends until 10:15pm Sat. & 7:15pm Sun. (now 6:45pm)

Westgate Shopping Maple Village Veterans Park Skyline HS



Route 1U Pontiac - University will be maintained.

Improvements listed here based on additional .7 mil funding or equivalent in the Cities of Ann Arbor, Ypsilanti and Saline and the Townships of Ypsilanti, Scio, Pittsfield, and Superior.

* - Buses run more frequently during peak commuting hours and less frequently during mid-day, nights and weekends, depending on ridership.



What's in it for 2nd Ward?

Improving our community's public transit service provides **more value to more riders and increases the benefits to all residents**—including public safety, infrastructure savings, economic development and environmental quality.

- Catch a late movie at the *Michigan Theater*
- Get your kids *home from the game* at Huron
- Take an early morning run in *The Arb* without the car

IMPROVED:

1 Pontiac - Dhu Varren

- Weekday buses every 30-60 min*
- Service until 11:45pm (now 10:45pm)
- Weekends until 10:45pm Sat. & 7:45pm Sun. (now 6:45pm)

Community HS Arrowwood Hills Traverwood Library Traver Village North Campus



2 Plymouth

- Weekday buses every 5-30 min*
- Service until 11:46pm (now 10:46pm)
- Weekends until 11:49pm Sat. & 7:13pm Sun. (now 6:15pm)

Downtown Ann Arbor Community HS North Campus U-M Hospital Cleary University Glacier Hills Traver Village Clague Middle School



3 Huron River

- Weekday buses every 30-60 min*
- Service until 11:15pm (now 10:15pm)

Downtown Ann Arbor VA Hospital North Campus Huron HS WCC St. Joe's EMU Downtown Ypsi



4 Washtenaw

- Weekday buses every 5-30 min*
- Service until 12:30am (now 11:30pm)
- Weekends until 12:30am Sat. & 7:30pm Sun. (now 7pm)

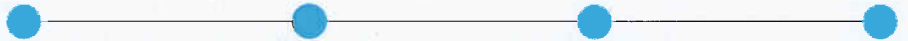
Downtown Ann Arbor Central Campus Transit Center County Rec Bldg. NEW! Arbor Hills Arborland EMU Downtown Ypsi



14 Geddes - E. Stadium

- Weekday buses every 30-40 min*
- Service until 7:36pm (now 6:15pm)
- Weekends until 5:40pm Sat. **New!** (now no service Sat. & Sun.)

Pioneer HS UM Stadium Tappan School UM Hospital



22 North-South Connector

- Weekday buses every 30-60 min*
- Service until 11:45pm (now 10:45pm)
- Weekends until 9:16pm Sat. (now 6:30pm)

Meijer (Carpenter Rd.) Arborland Huron HS VA Hospital Pierpont Commons Green Rd. Park & Ride



Improvements listed here based on additional .7 mil funding or equivalent in the Cities of Ann Arbor, Ypsilanti and Saline and the Townships of Ypsilanti, Scio, Pittsfield, and Superior.

* - Buses run more frequently during peak commuting hours and less frequently during mid-day, nights and weekends, depending on ridership.



What's in it for 3rd Ward?

Improving our community's public transit service provides **more value to more riders and increases the benefits to all residents**—including public safety, infrastructure savings, economic development and environmental quality.

- Catch a late movie at **Rave Cinemas**
- Grab **Sunday brunch** in downtown Ann Arbor or Ypsilanti
- Teens ride to and from Briarwood **at their convenience**

IMPROVED:

4 Washtenaw

- Weekday buses every 5-30 min*
- Service until 12:30am (now 11:30pm)
- Weekends until 12:30am Sat. & 7:30pm Sun. (now 7pm)



5 Packard

- Weekday buses every 7-60 min*
- Service until 11:30pm (now 11pm)
- Weekends until 10:30pm Sat. & 7:15pm Sun. (now 6:30pm)



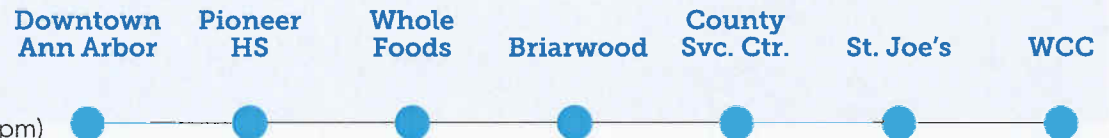
6 Ellsworth

- Weekday buses every 15-60 min* (now 30)
- Service until 11:45pm (now 11pm)
- Weekends until 10:31pm Sat. & 7:55pm Sun. (now 6:55pm)



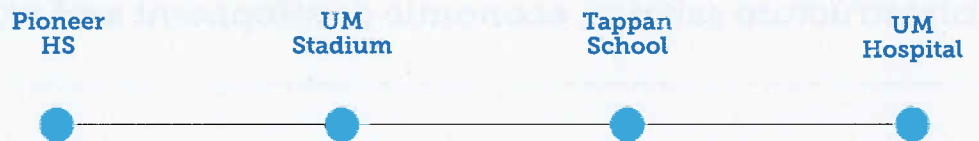
7 S. Main

- Weekday buses every 30-60 min*
- Service until 11:12pm (now 10:52pm)
- Weekends until 9:45pm Sat. & 7:53pm Sun. (now 7pm)



14 Geddes - E. Stadium

- Weekday buses every 30-40 min*
- Service until 7:36pm (now 6:15pm)
- Weekends until 5:40pm Sat. **New!** (now no service Sat. & Sun.)



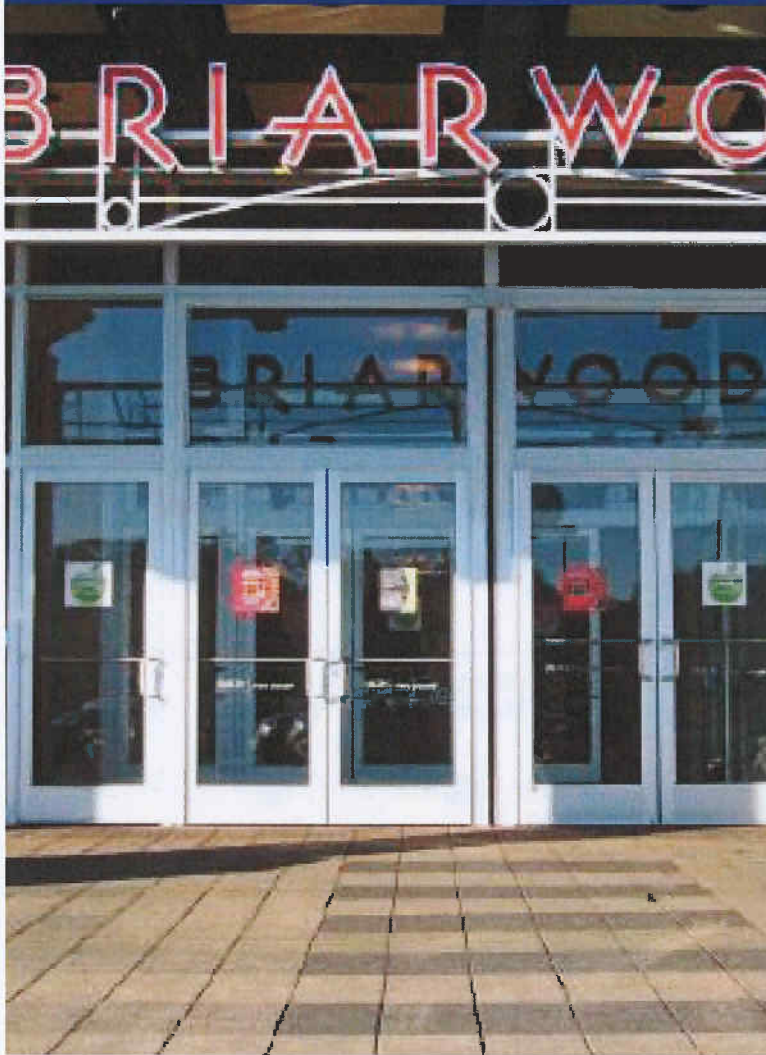
22 Connector

- Weekday buses every 30-60 min*
- Service until 11:45pm (now 10:45pm)
- Weekends until 9:16pm Sat. (now 6:30pm)



Improvements listed here based on additional .7 mil funding or equivalent in the Cities of Ann Arbor, Ypsilanti and Saline and the Townships of Ypsilanti, Scio, Pittsfield, and Superior.

* - Buses run more frequently during peak commuting hours and less frequently during mid-day, nights and weekends, depending on ridership.



What's in it for 4th Ward?

Improving our community's public transit service provides **more value to more riders and increases the benefits to all residents**—including public safety, infrastructure savings, economic development and environmental quality.

- Catch a late movie at the *Michigan Theater*
- Get your kids home from the game at *Pioneer*
- Teens ride to and from *Briarwood* at their convenience

IMPROVED:

5 Packard

Downtown Ann Arbor U-M Central Campus Buhr Park Meijer Rave Cinemas EMU Ypsi HS Downtown Ypsi

- Weekday buses every 7-60 min*
- Service until 11:30pm (now 11pm)
- Weekends until 10:30pm Sat. & 7:15pm Sun. (now 6:30pm)

6 Ellsworth

Downtown Ann Arbor Michigan Union Briarwood Costco Sam's Club Downtown Ypsi

- Weekday buses every 15-60 min* (now 30)
- Service until 11:45pm (now 11pm)
- Weekends until 10:31pm Sat. & 7:55pm Sun (now 6:55pm)

7 S. Main

Downtown Ann Arbor Pioneer HS Whole Foods Briarwood County Svc. Ctr. St. Joe's WCC

- Weekday buses every 30-60 min*
- Service until 11:12pm (now 10:52pm)
- Weekends until 9:45pm Sat. & 7:53pm Sun. (now 7pm)

8 Pauline

Downtown Ann Arbor Almendinger Park Pine Lake Cooperative Stadium Hardware Kroger Westgate

- Weekday buses every 15-60 min*
- Service until 11:45pm (now 10:45pm)
- Weekends until 10:45pm Sat. & 7:45pm Sun. (now 5:45pm)

14 Geddes - E. Stadium

Pioneer HS UM Stadium Tappan School UM Hospital

- Weekday buses every 30-40 min*
- Service until 7:36pm (now 6:15pm)
- Weekends until 5:40pm Sat. **New!** (now no service Sat. & Sun.)

16 Ann Arbor - Saline Rd.

Downtown Ann Arbor UM Stadium Pioneer HS Cranbrook Tower Oak Valley (Target)

- Weekday buses every 30-60 min*
- Service until 11:45pm (now 10:45pm)
- Weekends until 9:45pm Sat. & 6:45pm Sun. (now 6:45pm)

NEW!

15 Scio Church

becomes 2 new routes:

New "E" (W. Stadium/Oak Valley)

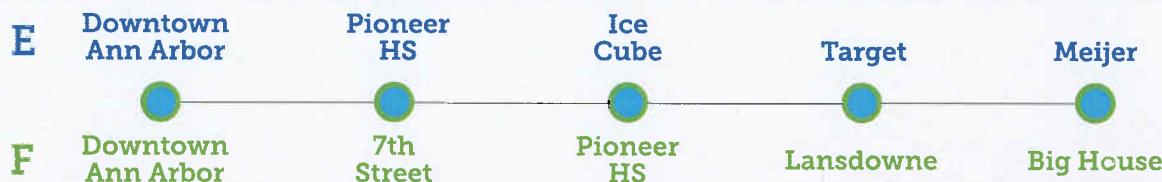
New "F" (Scio Church)

"E" W. Stadium/Oak Valley

- Weekday buses every 30-60 min*
- Service until 10:55pm (now 10:15pm)
- Weekends until 10:25pm Sat. & 7:25pm Sun. (now 6:15pm)

"F" Scio Church

- Weekday buses every 30-60 min*
- Service until 11pm (now 10:15pm)
- Weekends until 9pm Sat. (now 6:15pm)



Improvements listed here based on additional .7 mil funding or equivalent in the Cities of Ann Arbor, Ypsilanti and Saline and the Townships of Ypsilanti, Scio, Pittsfield, and Superior.

* - Buses run more frequently during peak commuting hours and less frequently during mid-day, nights and weekends, depending on ridership.



What's in it for 5th Ward?

Improving our community's public transit service provides **more value to more riders and increases the benefits to all residents**—including public safety, infrastructure savings, economic development and environmental quality.

- Catch a late movie at the *Michigan Theater*
- Get your kids *home from the game* at Skyline
- Grab *Sunday brunch* at Bell's Diner

IMPROVED:

8 Pauline

- Weekday buses every 15-60 min*
- Service until 11:45pm (now 10:45pm)
- Weekends until 10:45pm Sat. & 7:45pm Sun. (now 6pm)

Downtown Ann Arbor Almendinger Park Pine Lake Cooperative Stadium Hardware Kroger Westgate



13 Newport

- Weekday buses every 30-60 min*
- Service until 8:45pm (now 6:45pm)
- Weekends until 6:45pm Sat. **New!**

Downtown Ann Arbor Kerrytown Forsythe Middle School Rudolf Steiner School Bird Hill



NEW!

9 Jackson-Dexter

becomes 2 new routes:

New "B" (Jackson-Zeeb)

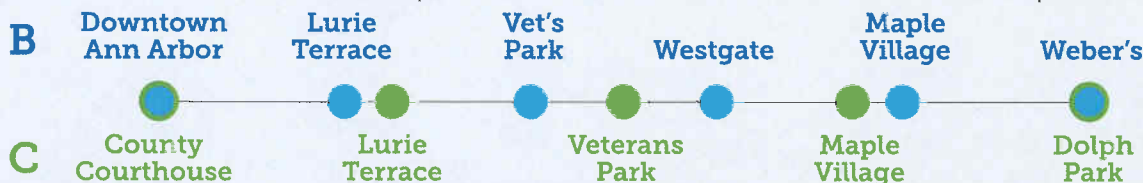
New "C" (Dexter)

"B" Jackson-Zeeb

- Weekday buses every 30-60 min*
- Service until 11:30pm (now 10:15pm)
- Weekends until 11:30pm Sat. & 7:30pm Sun. (now 6:15pm)

"C" Dexter

- Weekday buses every 30-60 min*
- Service until 11:30pm (now 10:15pm)
- Weekends until 10:30pm Sat. & 7:30pm Sun. (now 6:15pm)



15 Scio Church

becomes 2 new routes:

New "E" (W. Stadium/Oak Valley)

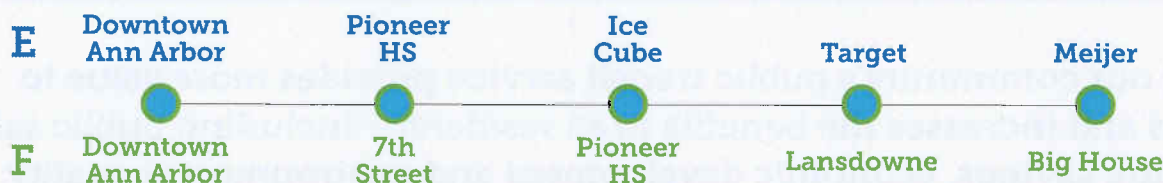
New "F" (Scio Church)

"E" W. Stadium/Oak Valley

- Weekday buses every 30-60 min*
- Service until 10:55pm (now 10:15pm)
- Weekends until 10:25pm Sat. & 7:25pm Sun. (now 6:15pm)

"F" Scio Church

- Weekday buses every 30-60 min*
- Service until 11pm (now 10:15pm)
- Weekends until 9pm Sat. (now 6:15pm)



12 Miller/Liberty

becomes 3 new routes:

New "A" (Liberty-Scio Ridge)

New "D" (replaces Route 18; now Miller-Skyline)

New "G" (N. Maple Connector)

"A" Liberty-Scio Ridge

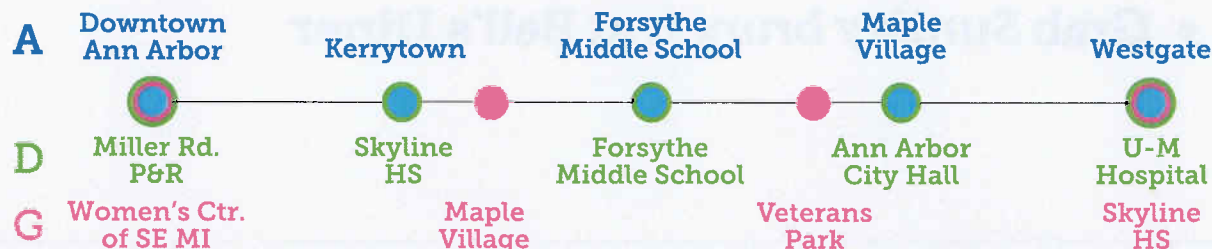
- Weekday buses every 30-60 min*
- Service until 10:58pm (now 10:15pm)
- Weekends until 9:58pm Sat. & 6:58pm Sun. (now 6:45pm)

"D" Miller-Skyline

- Weekday buses every 7-60 min*
- Service until 11pm (now 10:15pm)
- Weekends until 10pm Sat. & 7pm Sun. (now 6:45pm)

"G" N. Maple Connector

- Weekday buses every 30-60 min*
- Service until 11:15pm (now 10:15pm)
- Weekends until 10:15pm Sat. & 7:15pm Sun.



Improvements listed here based on additional .7 mil funding or equivalent in the Cities of Ann Arbor, Ypsilanti and Saline and the Townships of Ypsilanti, Scio, Pittsfield, and Superior.

* - Buses run more frequently during peak commuting hours and less frequently during mid-day, nights and weekends, depending on ridership.

Savings*



Transportation Cost Savings
(Money saved over traditional transportation)

\$28 million

Affordable Mobility

(Versus private transportation for seniors & the disabled)

\$4 million

TOTAL \$32 million



Metric tons of CO₂ saved

3,594

Economic Impact*



Economic impact of public transit:

\$78 million

Economic impact of vehicle operating

cost savings:

\$18 million

TOTAL \$96 million

SOURCE

* "Economic and Community Benefits of Local Bus Transit Service" - Michigan Department of Transportation, August 2009
Based on the Urban Core material dated March 29, 2013



Ann Arbor Registered Voters

66%

have used
public transit
in Ann Arbor

95%

said it's
important
to provide
public transit

54%

of frequent TheRide riders
have a car and a driver's
license but choose to use
public transportation¹

People make important real estate
decisions based on access to public
transportation.²

1,000

fewer parking spaces downtown on a daily basis—
the equivalent to constructing TWO new large parking
structures at a cost of \$40,000,000³



Millenials (under 39 years old)

23%

Fewer miles
driven than their
counterparts
in 2004⁴

40%

more
public
transit
usage⁵

15% reduction in drunk driving for
each additional hour of evening
transit service⁶

SOURCES

¹ "The New Real Estate Maturity" - National Association of Realtors, March 2013

² TheRide Survey, November 2011

³ U.S. PIRG Education Fund, May 2013

⁴ "One for the Road" - Cornell University Study, December 2008

⁵ \$40,000,000 is the total and does not include the monetary and opportunity costs of using the land for parking

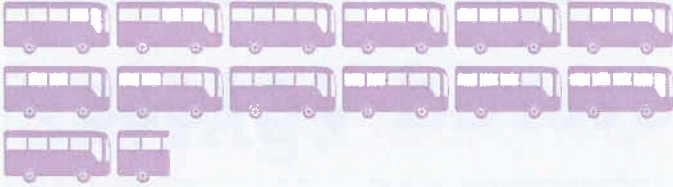
For more information, visit movingyouforward.org

Benefits of Public Transit

To industries in the urban core

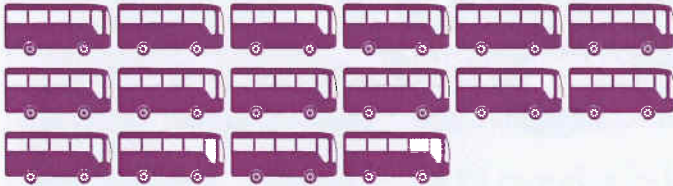
EXISTING

\$27 million



IMPROVED

\$32 million



Jobs Created Locally by Reliable Public Transit

EXISTING

487



IMPROVED

751



Funding Plan:

Services proposed in this plan would be funded by a combination of state and federal matching funds, a transportation authority millage (if approved), fares, and purchase-of-service agreements (P.O.S.A.'s) with communities that are not in the authority area.

What's in the plan:

- Improved and expanded bus service in Ann Arbor & Ypsilanti
- Longer night service
- More weekend service
- More direct routes
- Real-time bus information at transit centers
- Improved bus stops
- Bus priority measures (traffic lights stay/turn green for buses)
- Express service
- Bus service to surrounding communities covered under Purchase of Service Agreements (P.O.S.A.'s)

For details on proposed transportation service improvements, visit MovingYouForward.org.

Improvements listed here based on additional .7 mil funding in Ann Arbor & Ypsilanti, and estimated purchase of service agreements for Ypsilanti Township, Scio Township, Pittsfield Township, Superior Township and Saline.

