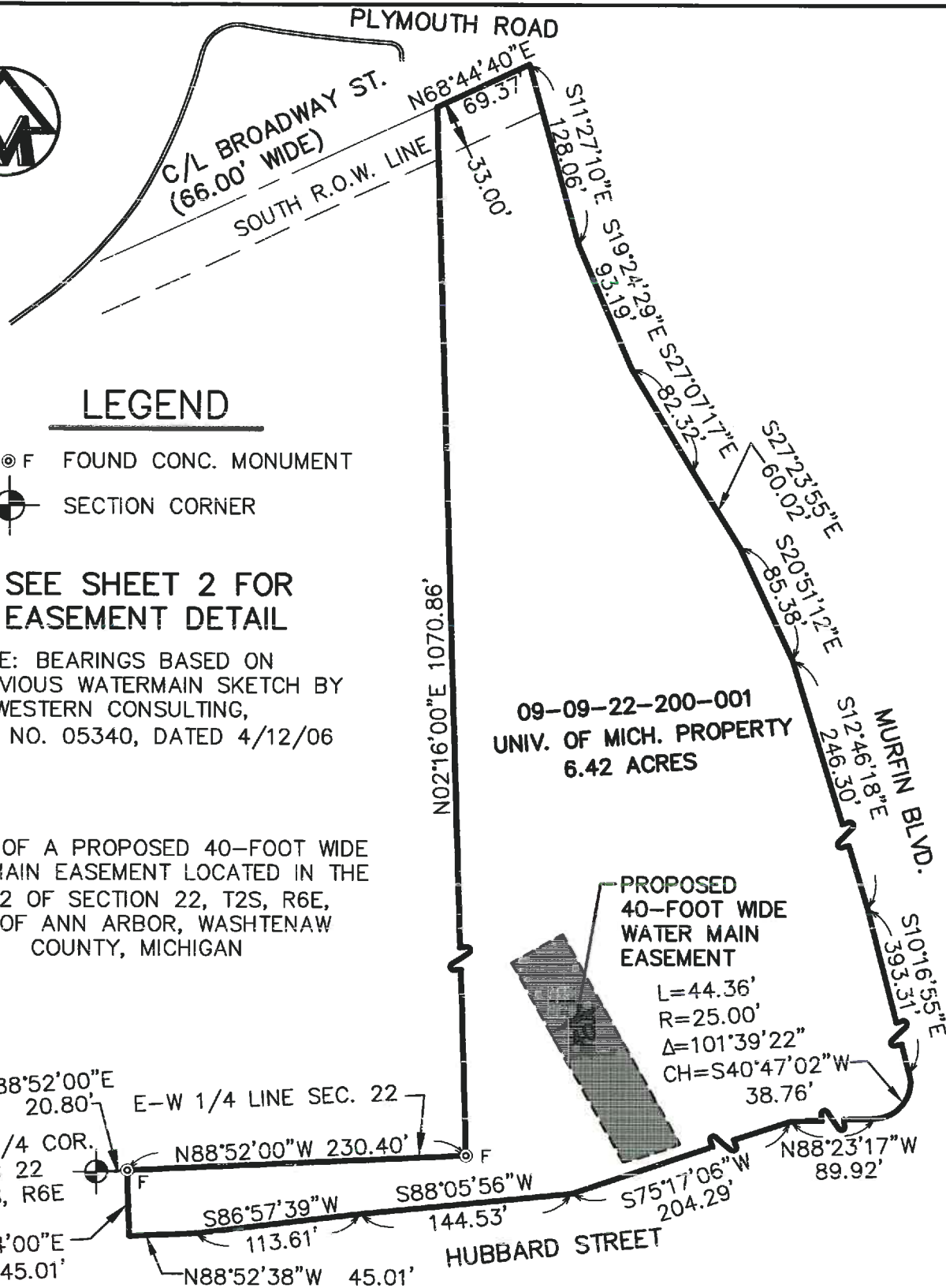


EXHIBIT A



LEGEND

- ⊙ F FOUND CONC. MONUMENT
- ⊙ SECTION CORNER

SEE SHEET 2 FOR EASEMENT DETAIL

NOTE: BEARINGS BASED ON PREVIOUS WATERMAIN SKETCH BY MIDWESTERN CONSULTING, JOB NO. 05340, DATED 4/12/06

SURVEY OF A PROPOSED 40-FOOT WIDE WATER MAIN EASEMENT LOCATED IN THE W 1/2 OF SECTION 22, T2S, R6E, CITY OF ANN ARBOR, WASHTENAW COUNTY, MICHIGAN

09-09-22-200-001
UNIV. OF MICH. PROPERTY
6.42 ACRES

PROPOSED 40-FOOT WIDE WATER MAIN EASEMENT

L=44.36'
R=25.00'
Δ=101°39'22"
CH=S40°47'02"W
38.76'



M I D W E S T E R N
C O N S U L T I N G

3815 Plaza Drive Ann Arbor, Michigan 48108
(734) 995-0200 • www.midwesternconsulting.com
Land Development • Land Survey • Institutional • Municipal
Wireless Communications • Transportation • Landfill Services

INTEGRATED DESIGN SOLUTIONS
PROPOSED WATER MAIN EASEMENT

DATE: 6/23/17 JOB NO.: **14019**

SCALE: 1" = 100

SHEET 1 OF 3

EXHIBIT B



EASEMENT DETAIL

UNIVERSITY OF MICHIGAN
PROPERTY
6.42 ACRES

MURFIN BLVD.

PROPOSED
WATER MAIN
EASEMENT

EXISTING
WATER MAIN
EASEMENT
L. 4855,
P. 334

N64°39'15"E 40.00'

N25°20'45"W 156.41'

ARC=95.39'
R=479.00'
Δ=11°24'38"
CH=N84°17'41"E
95.24'

S88°52'00"E
62.81'

E-W 1/4 LINE
SEC. 22

S02°16'00"W
24.54'

S25°20'45"E
164.54'

W 1/4 COR.
SECTION 22,
T2S, R6E

HUBBARD ST.

N90°00'00"E 202.15'

POINT OF
BEGINNING

ARC=40.83'
R=479.00'
Δ=04°53'02"
CH=S76°08'51"W
40.82'



M I D W E S T E R N
C O N S U L T I N G

3815 Plaza Drive Ann Arbor, Michigan 48108
(734) 995-0200 • www.midwesternconsulting.com
Land Development • Land Survey • Institutional • Municipal
Wireless Communications • Transportation • Landfill Services

INTEGRATED DESIGN SOLUTIONS
PROPOSED WATER MAIN EASEMENT

DATE: 6/23/17

JOB NO.: 14019

SCALE: 1" = 100

SHEET 2 OF 3