

EXHIBIT A

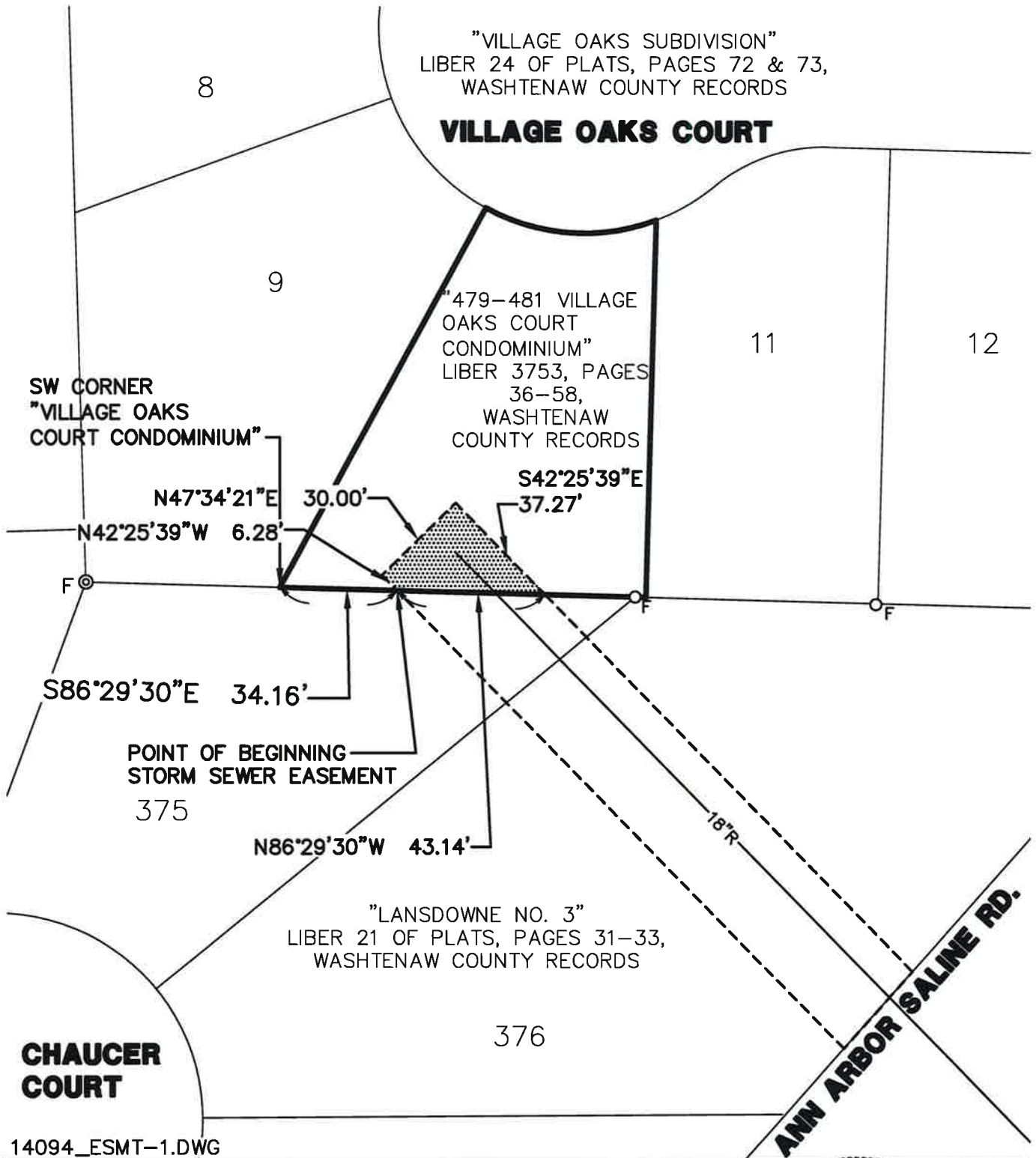
SURVEY OF A STORM SEWER EASEMENT LOCATED IN
THE NW 1/4 OF SECTION 5, T3S, R6E,
CITY OF ANN ARBOR, WASHTENAW COUNTY, MICHIGAN



BEARINGS BASED ON "VILLAGE OAKS SUBDIVISION",
AS RECORDED IN LIBER 24 OF PLATS, PAGES 72 & 73,
WASHTENAW COUNTY RECORDS.

LEGEND

- F FOUND IRON ROD
- ⊙ F FOUND MONUMENT



14094_ESMT-1.DWG

CLIENT: CITY OF ANN ARBOR	DATE: 8/26/16	
JOB NO.: 14094	SHEET 1 OF 2	
SECTION: 5 TWN: 3S. RANGE: 6E.	SCALE: 1in. = 40 ft.	
CITY OF ANN ARBOR	BOOK: 450	
WASHTENAW COUNTY, MICHIGAN	BY: KMW	
<p>M I D W E S T E R N C O N S U L T I N G</p> <p>3815 Plaza Drive Ann Arbor, Michigan 48108 (734) 995-0200 • www.midwesternconsulting.com</p> <p>Land Development • Land Survey • Institutional • Municipal Wireless Communications • Transportation • Landfill Services</p>		