
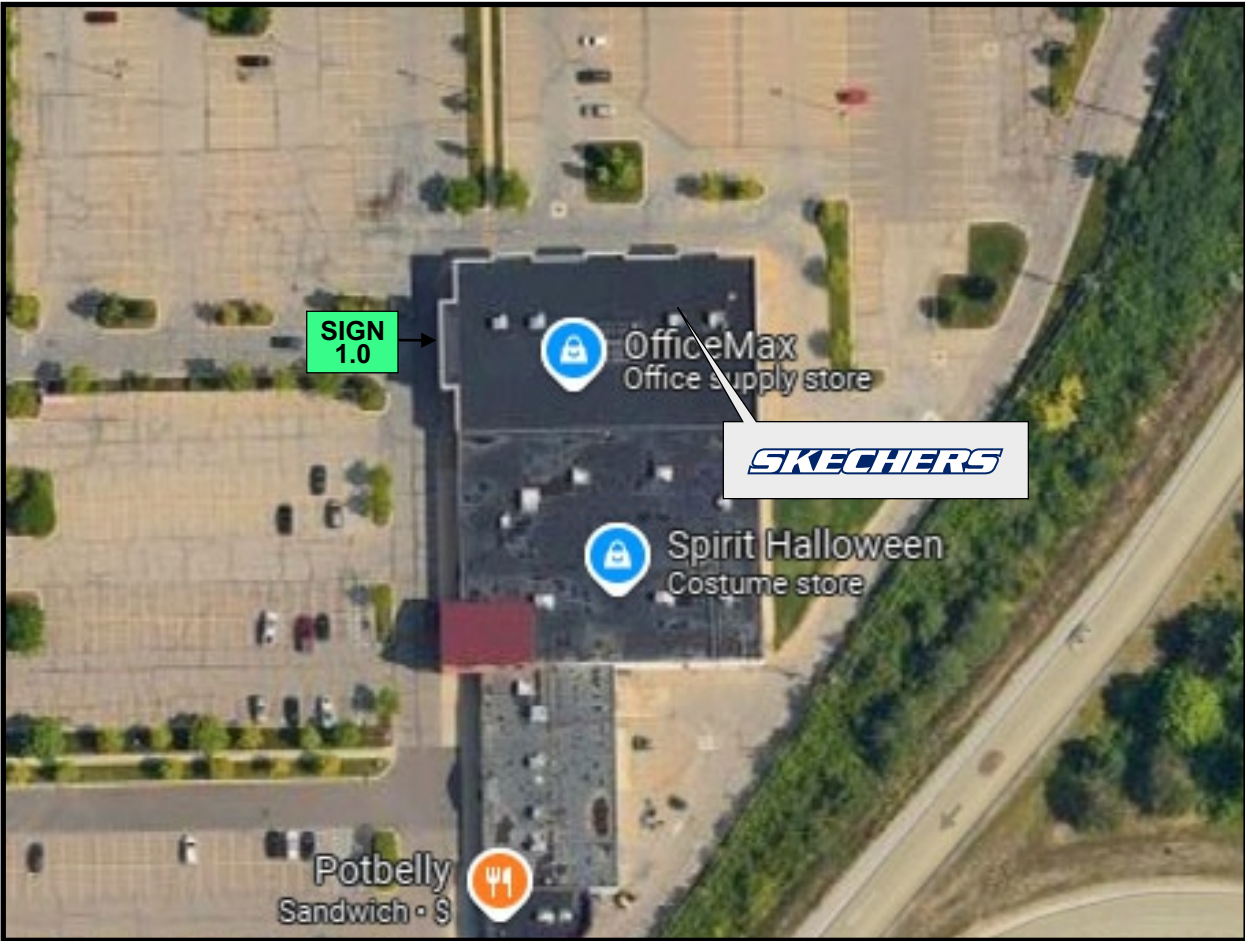


SUMMARY OF SIGNAGE

SIGN	GRAPHIC	DESCRIPTION	FT²
1.0		- FACE LIT CHANNEL LETTERS ON RW - 3" DEEP - (1) REQUIRED FOR FRONT ELEVATION	102.43

STANDARDS IMAGE (IF AVAILABLE)

SCALE: NA



3600 WASHTENAW AVE., UNIT 115, ANN ARBOR, MI 48104

DRAWING NO.

E048070

SITE/
SUM

DATE OF

LAST CHANGE:
02/07/25

REVISION #

5

ADDITIONAL INSTALL NOTES:

FILE LOC:

Company\SKECHERS\PROJECTS_SITE LOCATIONS\MI\ANN ARBOR E048070\11 PRODUCTION FILES

CONSULTANT:

A WASSERSTROM

PROJECT MANAGER:

D BELLINGER

DESIGNER:

K CASA

ASG

ADVANCE SIGN GROUP



800.861.8006

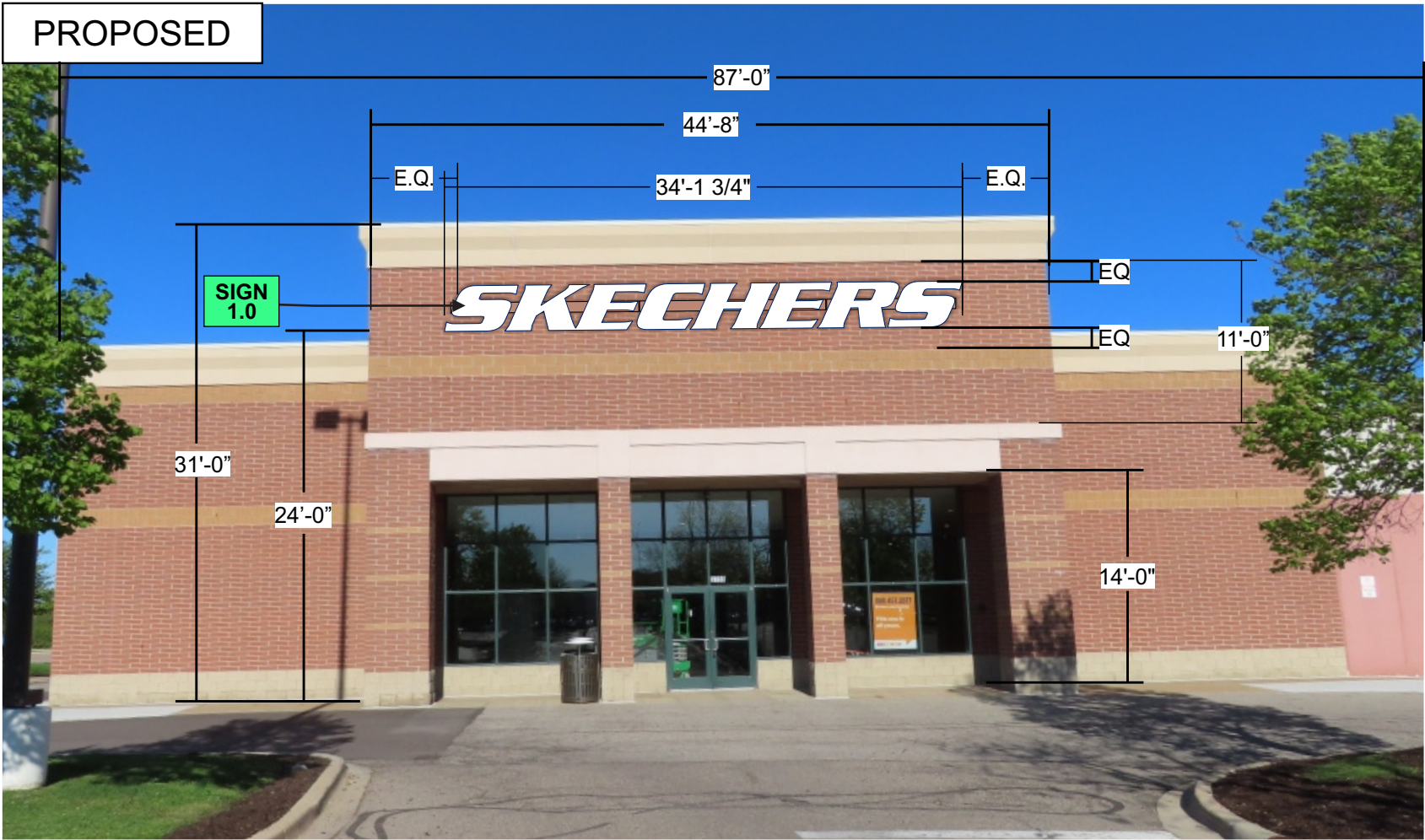
ADVANCESIGNGROUP.COM

1.0 ELEVATION

This sign requires ZBA approval for the height from grade exceeding 20'.

INTERIOR ELEVATION - SIGN 1.0

SCALE: 3/32"=1'



SKECHERS

3600 WASHTENAW AVE., UNIT 115, ANN ARBOR, MI 48104

DRAWING NO.

E048070

1.0

DATE OF

LAST CHANGE:
02/07/25

REVISION #

5

ADDITIONAL INSTALL NOTES:

FILE LOC:

Company\SKECHERS\PROJECTS\ SITE LOCATIONS\MI\ANN ARBOR E048070\11 PRODUCTION FILES

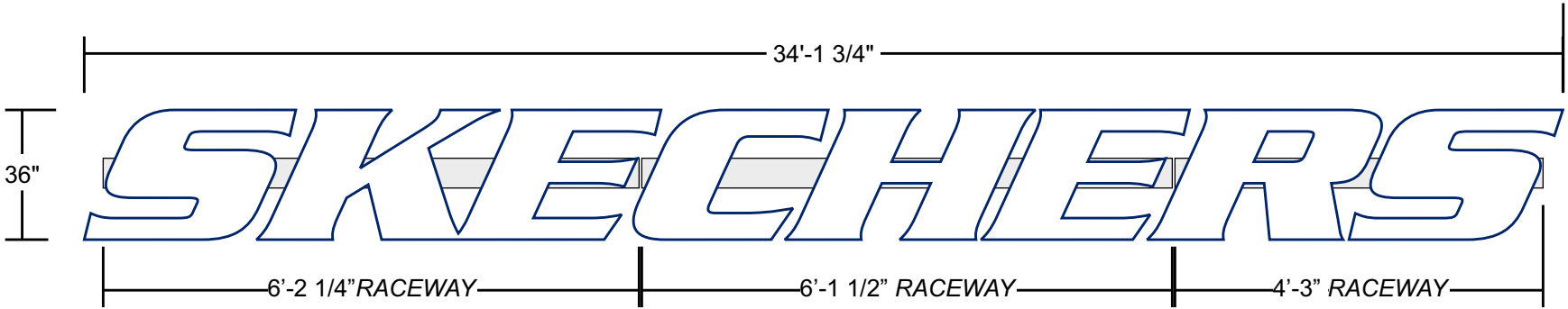
CONSULTANT:
A WASSERSTROM
PROJECT MANAGER:
D BELLINGER
DESIGNER:
K CASA

ASG
ADVANCE SIGN GROUP

c **UL** US

800.861.8006
ADVANCESIGNGROUP.COM

BLUE RETURNS



FACE-LIT CHANNEL LETTERS (SK-CL-36-W) _ RACEWAY MOUNT

SCALE: 1/4"=1'

(QTY. 1) ONE REQUIRED FOR STOREFRONT

102.43 FT²

SIGN DETAIL:

- 1 3" DEEP - .040 ALUMINUM RETURNS OUTSIDE PAINTED TO MATCH SW 6524 "COMMODORE BLUE" / INSIDE WHITE.
- 2 3/16" THICK WHITE 7328 ACRYLIC FACES
- 3 1" BLUE JEWELITE TRIM CAP.
- 4 1/8" ACM BACKS, OUTSIDE **WHITE** / INSIDE **WHITE**.
- 5 WHITE 6000K LEDS AS REQUIRED (QTY & PLACEMENT DETERMINED BY SIGN SIZE)
- 6 4" x 8" SIGNCOMP 1981 & 1982N EXTRUDED ALUMINUM RACEWAY W/ DISCONNECT SWITCH PAINTED TO MATCH EXISTING FACADE **SW 6341 RED CLAY**.
- 7 REMOTE 120V POWER SUPPLIES MOUNTED INSIDE UL METAL BOX W/ DISCONNECT SWITCH.
- 8 UL LISTED/RECOGNIZED 18 AWG/2PLTC WIRING AND FIXTURES GOING TO POWER SUPPLIES. **SIGN TO HAVE 15' WHIP**
- 9 WEEP HOLES W/040 ALUMINUM BAFFLES.
- 10 COUNTERSUNK SCREWS TO ATTACH ACRYLIC FACE TO RETURN.
- 11 MOUNTING HARDWARE - INSTALLER TO DETERMINE APPROPRIATE HARDWARE.
- 12 WALL CONSTRUCTION - BRICK OVER FOAM BOARD WITH METAL STUDS.

SHERWIN WILLIAMS
SW 6524 COMMODORE
RGB: 37, 71, 106
CMYK: 100, 80, 36, 26
HEX: #25476a

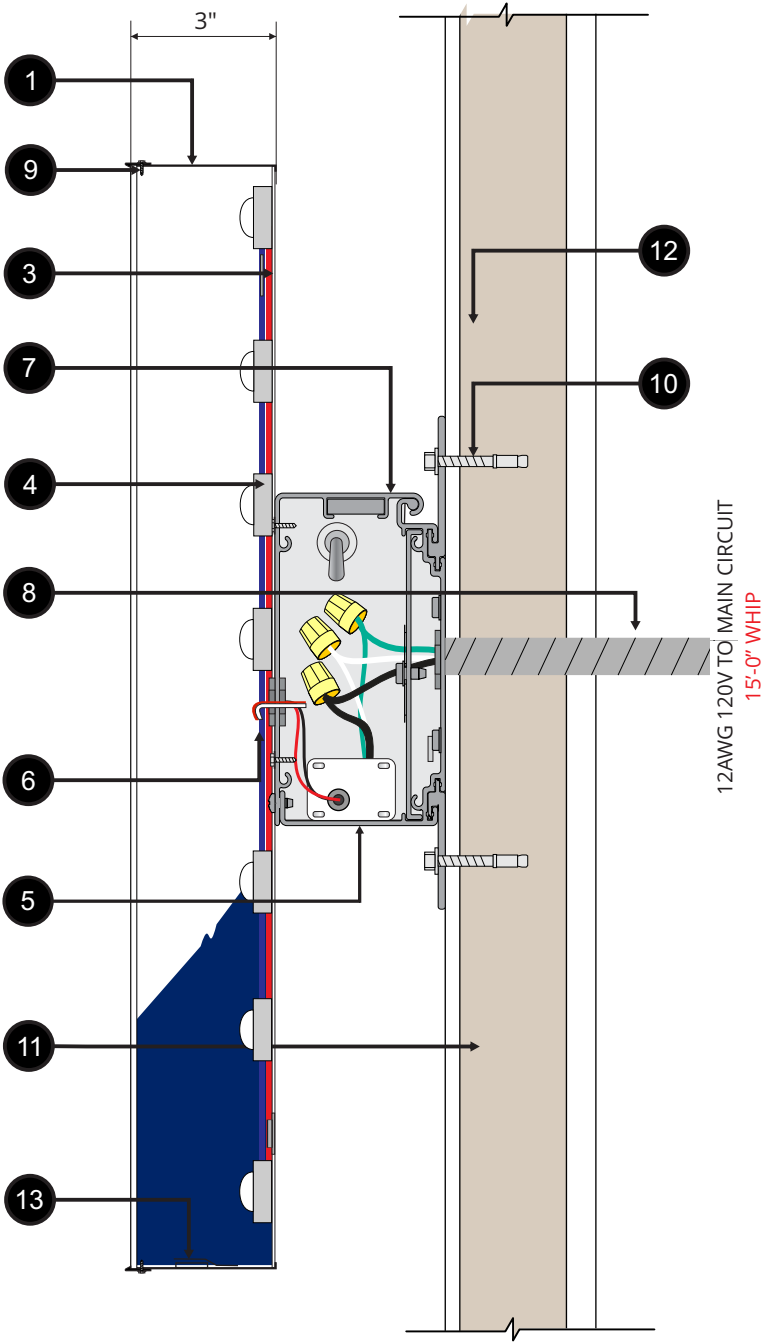


NIGHT VIEW

- NOTES:
- POWER SUPPLY BOXES PAINTED **BLACK**.

SECTION VIEW

SCALE: NTS



INSTALLATION NOTES 1: USE NON-CORROSIVE HARDWARE AND SEAL ALL EXTERIOR FACADE PENETRATIONS WATERTIGHT.

INSTALLATION NOTES 2: ONE DEDICATED (1) 120VAC CIRCUIT BY OTHERS REQUIRED WITHIN 5' OF CENTER OF SIGN. THIS SIGN IS INTENDED TO BE INSTALLED IN ACCORDANCE WITH THE REQUIREMENTS OF ARTICLE 600 OF THE NATIONAL ELECTRICAL CODE AND/OR OTHER APPLICABLE CODES. THIS INCLUDES PROPER GROUNDING AND BONDING.

INSTALLATION NOTES 3: GC TO PROVIDE ADEQUATE WOOD OR METAL BLOCKING IN CORRELATION W/ FACADE FRAMING AS REQUIRED.



3600 WASHTENAW AVE., UNIT 115, ANN ARBOR, MI 48104

DRAWING NO.

E048070

1.0

DATE OF

LAST CHANGE:
02/07/25

REVISION #

5

ADDITIONAL INSTALL NOTES:

FILE LOC:

Company\SKECHERS\PROJECTS_SITE LOCATIONS\MI\ANN ARBOR E048070\11 PRODUCTION FILES

CONSULTANT:
A WASSERSTROM
PROJECT MANAGER:
D BELLINGER
DESIGNER:
K CASA

ASG

ADVANCE SIGN GROUP



800.861.8006

ADVANCESIGNGROUP.COM