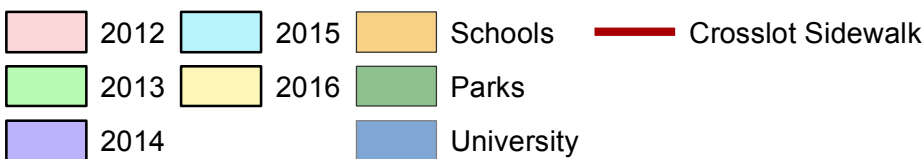
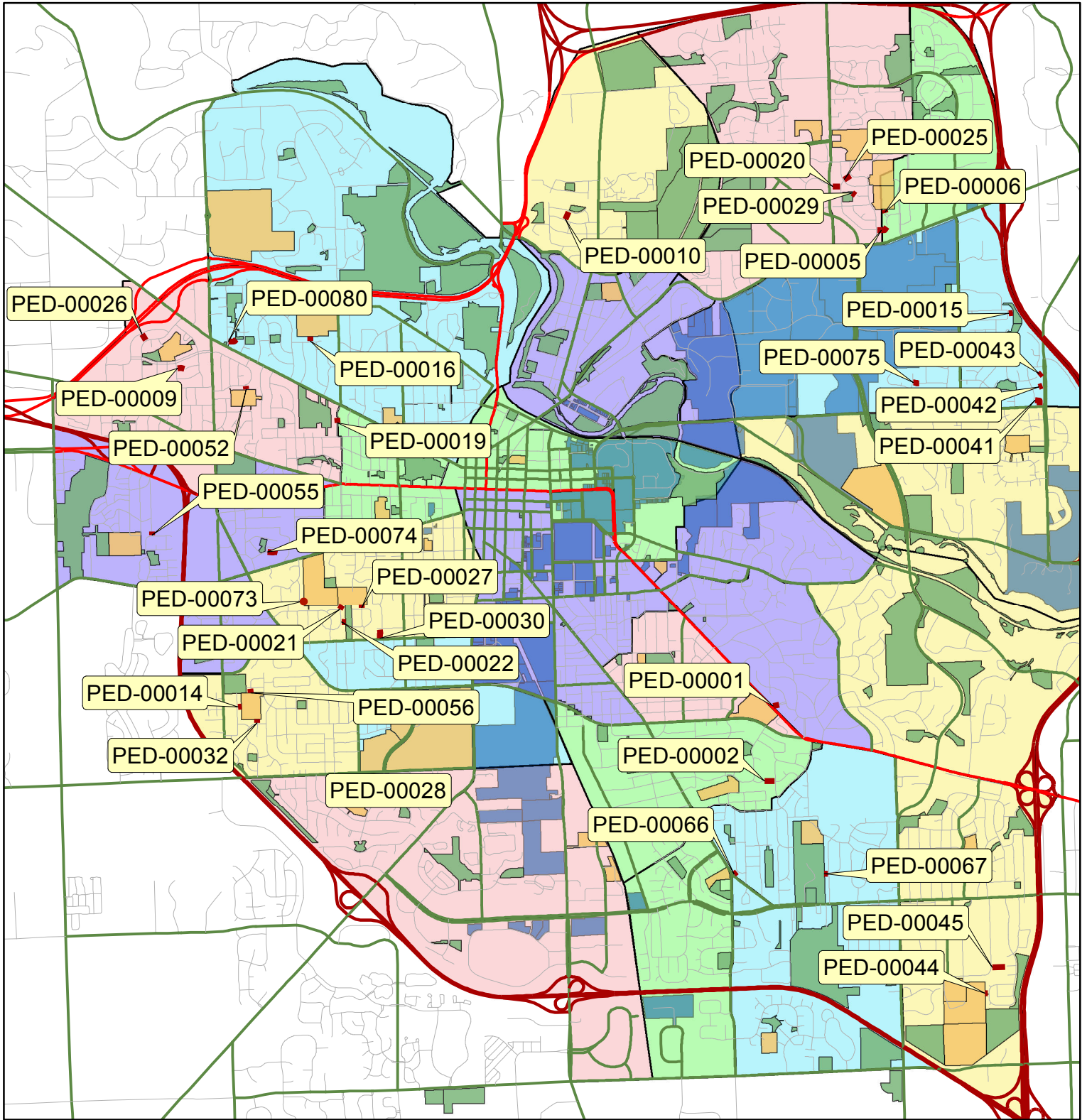



# Crosslot Sidewalks: Overview



No Scale



Copyright 2013 City of Ann Arbor, Michigan  
 No part of this product shall be reproduced or transmitted in any form or by any means, electronic or mechanical, for any purposes, without prior written permission from the City of Ann Arbor.  
 This map complies with National Map Accuracy Standards for mapping at 1 inch = 100 feet. The City of Ann Arbor and its mapping contractors assume no legal responsibility for the content and/or inappropriate use of information represented on this map.

# Crosslot Sidewalks:PED-00001

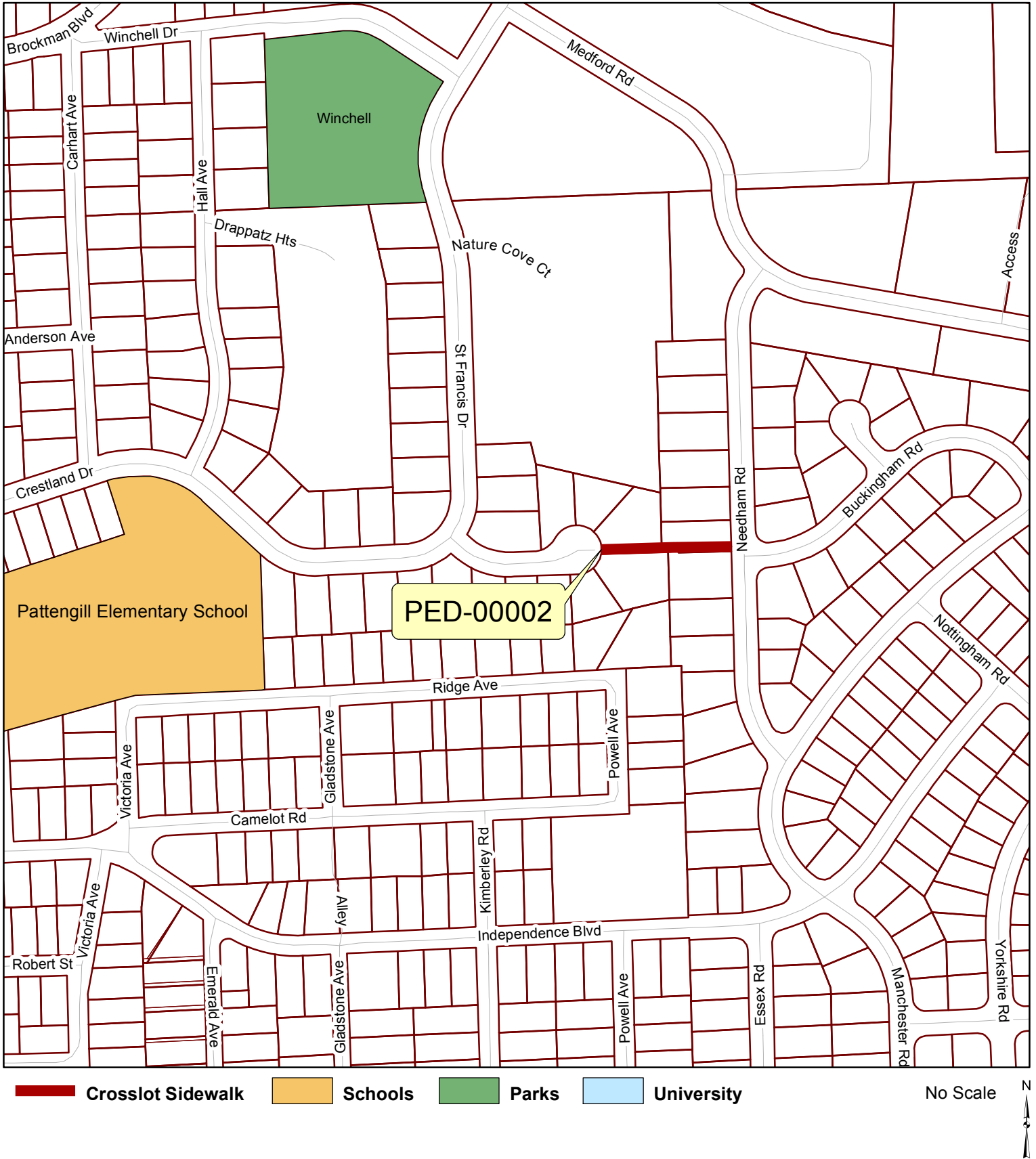


Copyright 2013 City of Ann Arbor, Michigan

No part of this product shall be reproduced or transmitted in any form or by any means, electronic or mechanical, for any purposes, without prior written permission from the City of Ann Arbor.

This map complies with National Map Accuracy Standards for mapping at 1 inch = 100 feet. The City of Ann Arbor and its mapping contractors assume no legal responsibility for the content and/or inappropriate use of information represented on this map.

# Crosslot Sidewalks:PED-00002



Copyright 2013 City of Ann Arbor, Michigan

No part of this product shall be reproduced or transmitted in any form or by any means, electronic or mechanical, for any purposes, without prior written permission from the City of Ann Arbor.

This map complies with National Map Accuracy Standards for mapping at 1 inch = 100 feet. The City of Ann Arbor and its mapping contractors assume no legal responsibility for the content and/or inappropriate use of information represented on this map.

# Crosslot Sidewalks: PED-00005, 0006, 0020, 0025, 0029

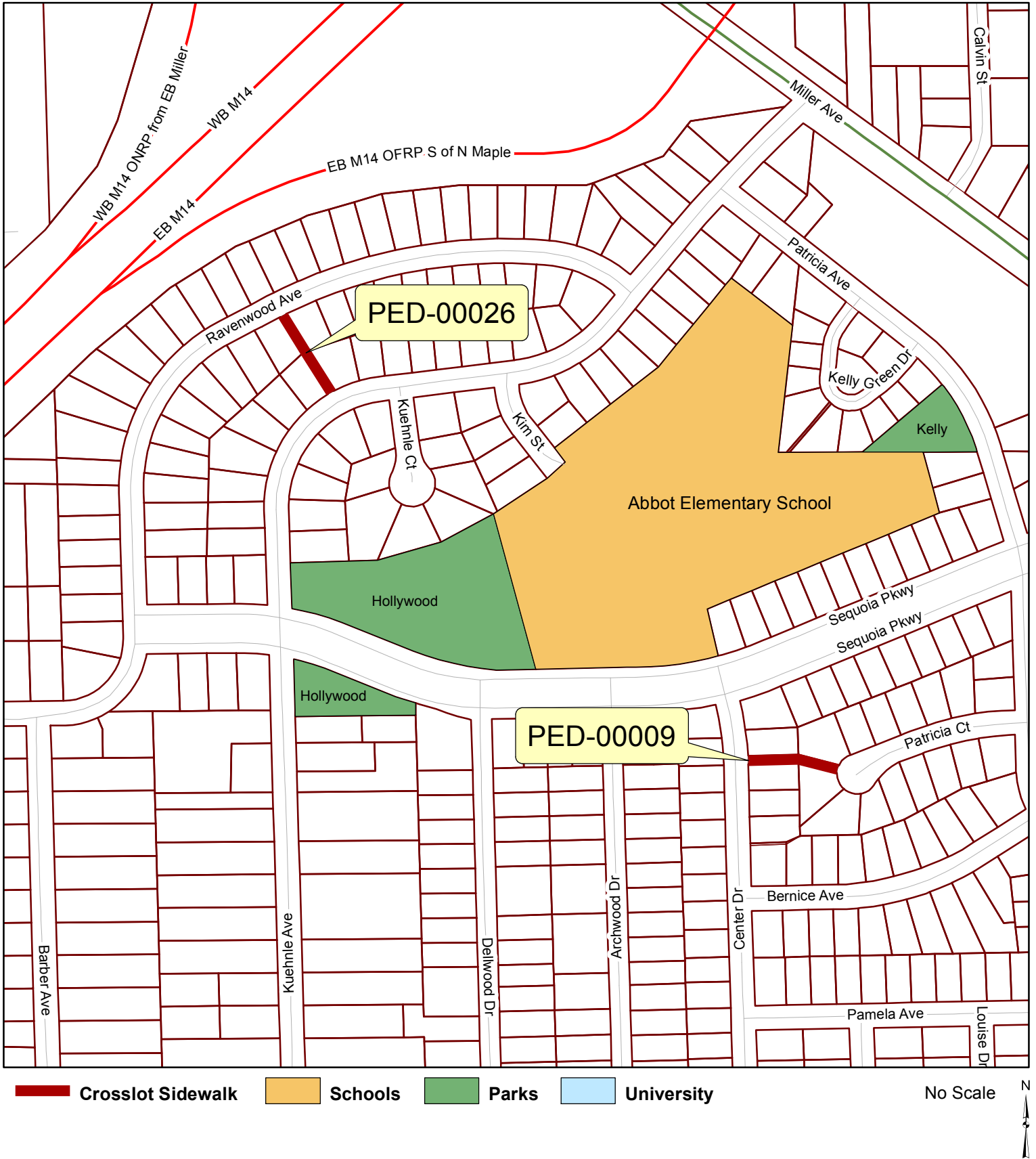


**Crosslot Sidewalk**   **Schools**   **Parks**   **University**

No Scale   
 N   
 ↑

Copyright 2013 City of Ann Arbor, Michigan  
 No part of this product shall be reproduced or transmitted in any form or by any means, electronic or mechanical, for any purposes, without prior written permission from the City of Ann Arbor.  
 This map complies with National Map Accuracy Standards for mapping at 1 inch = 100 feet. The City of Ann Arbor and its mapping contractors assume no legal responsibility for the content and/or inappropriate use of information represented on this map.

# Crosslot Sidewalks: PED-00009,00026



Copyright 2013 City of Ann Arbor, Michigan

No part of this product shall be reproduced or transmitted in any form or by any means, electronic or mechanical, for any purposes, without prior written permission from the City of Ann Arbor.

This map complies with National Map Accuracy Standards for mapping at 1 inch = 100 feet. The City of Ann Arbor and its mapping contractors assume no legal responsibility for the content and/or inappropriate use of information represented on this map.

# Crosslot Sidewalks: PED-00010

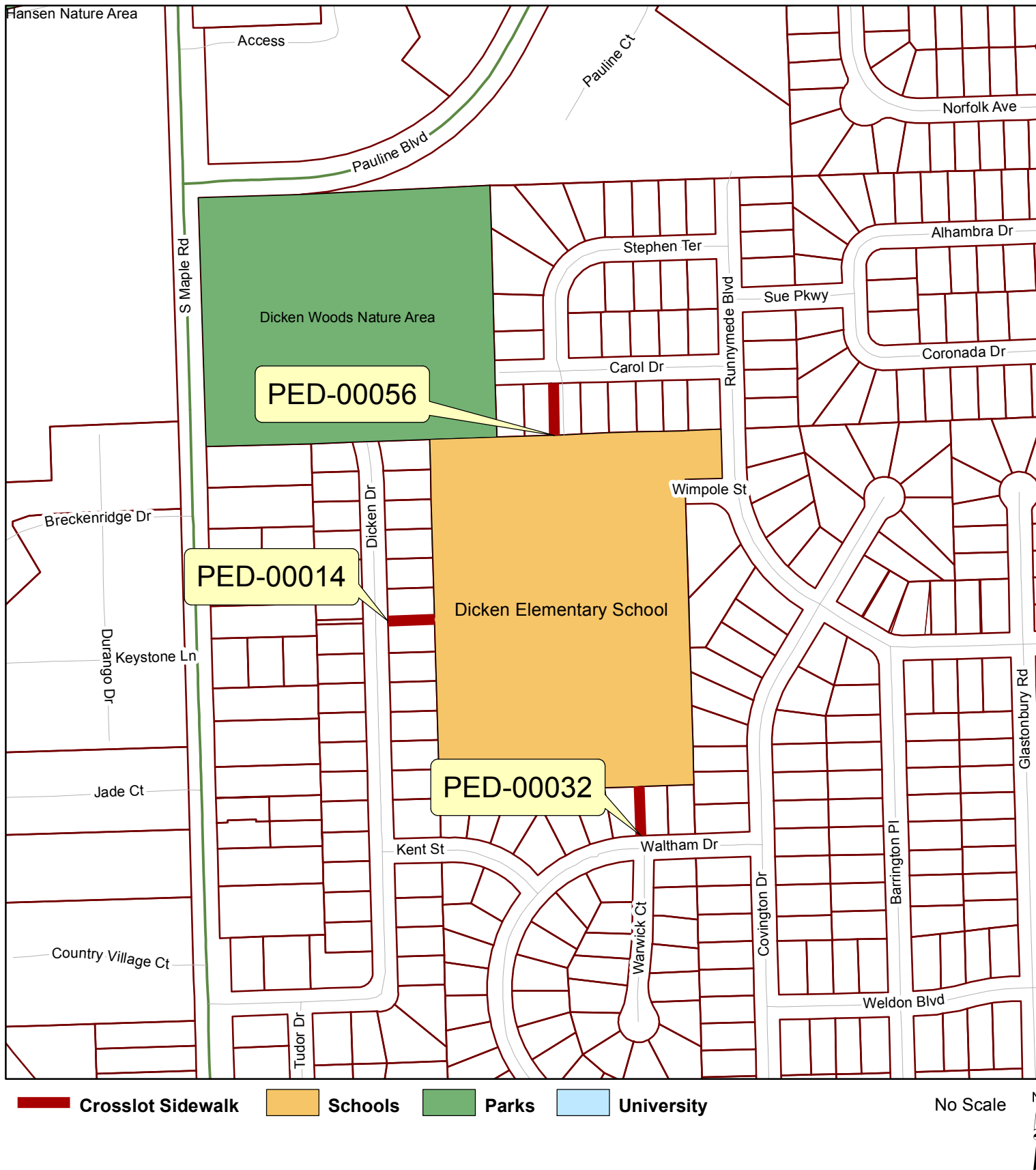


Copyright 2013 City of Ann Arbor, Michigan

No part of this product shall be reproduced or transmitted in any form or by any means, electronic or mechanical, for any purposes, without prior written permission from the City of Ann Arbor.

This map complies with National Map Accuracy Standards for mapping at 1 inch = 100 feet. The City of Ann Arbor and its mapping contractors assume no legal responsibility for the content and/or inappropriate use of information represented on this map.

# Crosslot Sidewalks: PED-00014, 00032, 00056

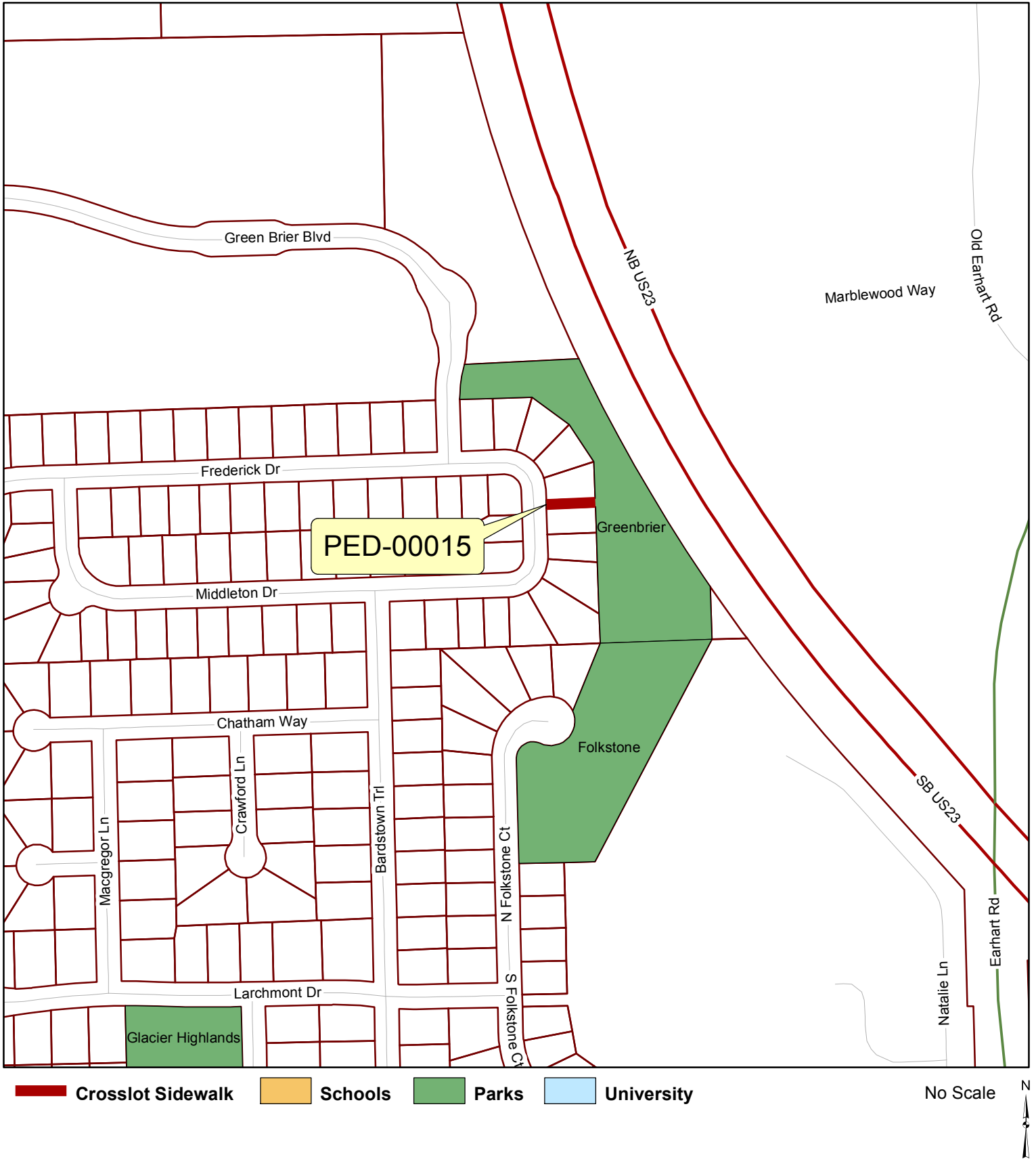


Copyright 2013 City of Ann Arbor, Michigan

No part of this product shall be reproduced or transmitted in any form or by any means, electronic or mechanical, for any purposes, without prior written permission from the City of Ann Arbor.

This map complies with National Map Accuracy Standards for mapping at 1 inch = 100 feet. The City of Ann Arbor and its mapping contractors assume no legal responsibility for the content and/or inappropriate use of information represented on this map.

# Crosslot Sidewalks:PED-00015



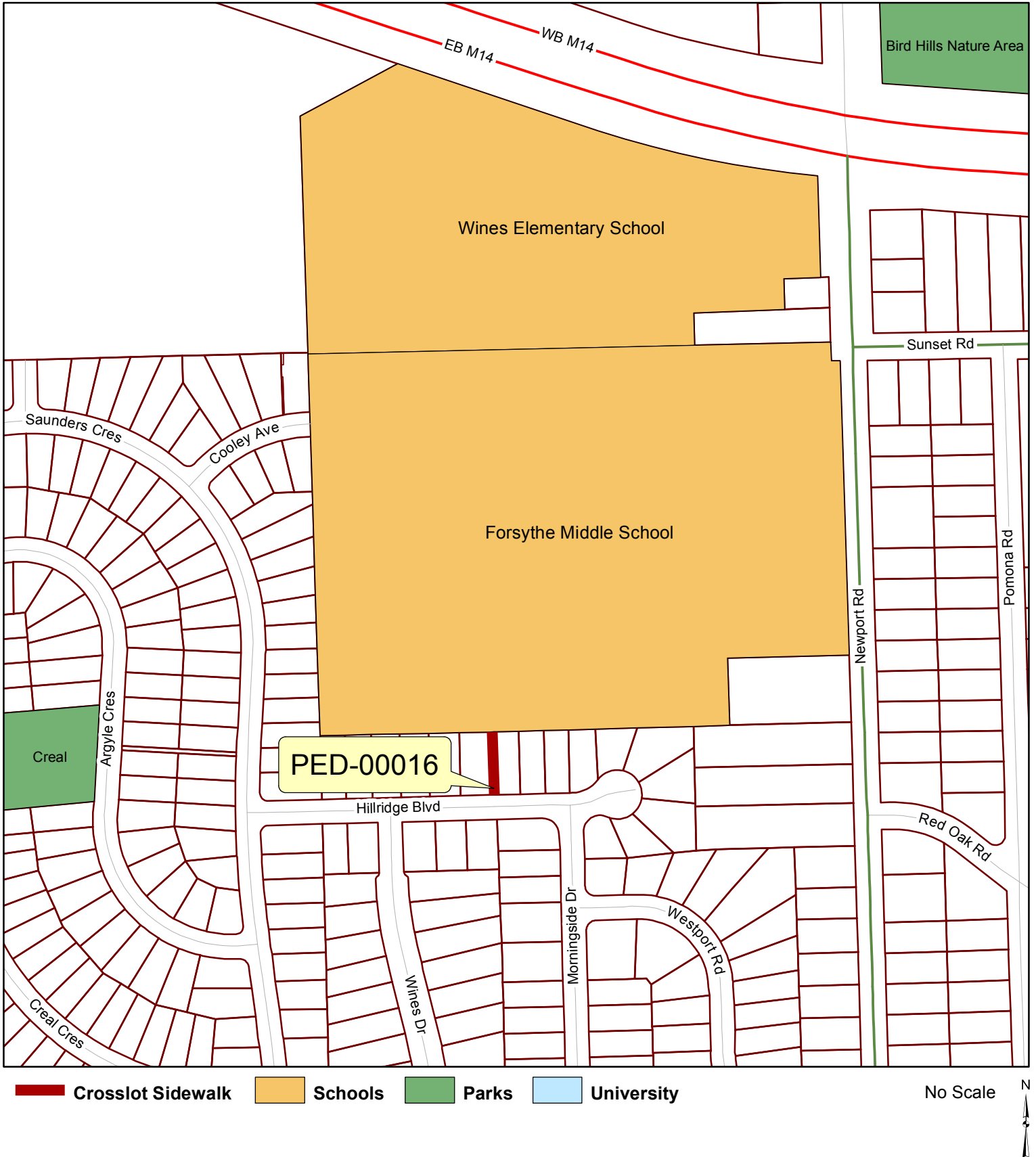
Copyright 2013 City of Ann Arbor, Michigan

No part of this product shall be reproduced or transmitted in any form or by any means, electronic or mechanical, for any purposes, without prior written permission from the City of Ann Arbor.

This map complies with National Map Accuracy Standards for mapping at 1 inch = 100 feet. The City of Ann Arbor and its mapping contractors assume no legal responsibility for the content and/or inappropriate use of information represented on this map.



# Crosslot Sidewalks:PED-00016



# Crosslot Sidewalks:PED-00019



Copyright 2013 City of Ann Arbor, Michigan

No part of this product shall be reproduced or transmitted in any form or by any means, electronic or mechanical, for any purposes, without prior written permission from the City of Ann Arbor.

This map complies with National Map Accuracy Standards for mapping at 1 inch = 100 feet. The City of Ann Arbor and its mapping contractors assume no legal responsibility for the content and/or inappropriate use of information represented on this map.

# Crosslot Sidewalks: PED-00021, 00022, 00027, 00030, 00073



Copyright 2013 City of Ann Arbor, Michigan

No part of this product shall be reproduced or transmitted in any form or by any means, electronic or mechanical, for any purposes, without prior written permission from the City of Ann Arbor.

This map complies with National Map Accuracy Standards for mapping at 1 inch = 100 feet. The City of Ann Arbor and its mapping contractors assume no legal responsibility for the content and/or inappropriate use of information represented on this map.

# Crosslot Sidewalks: PED-00028

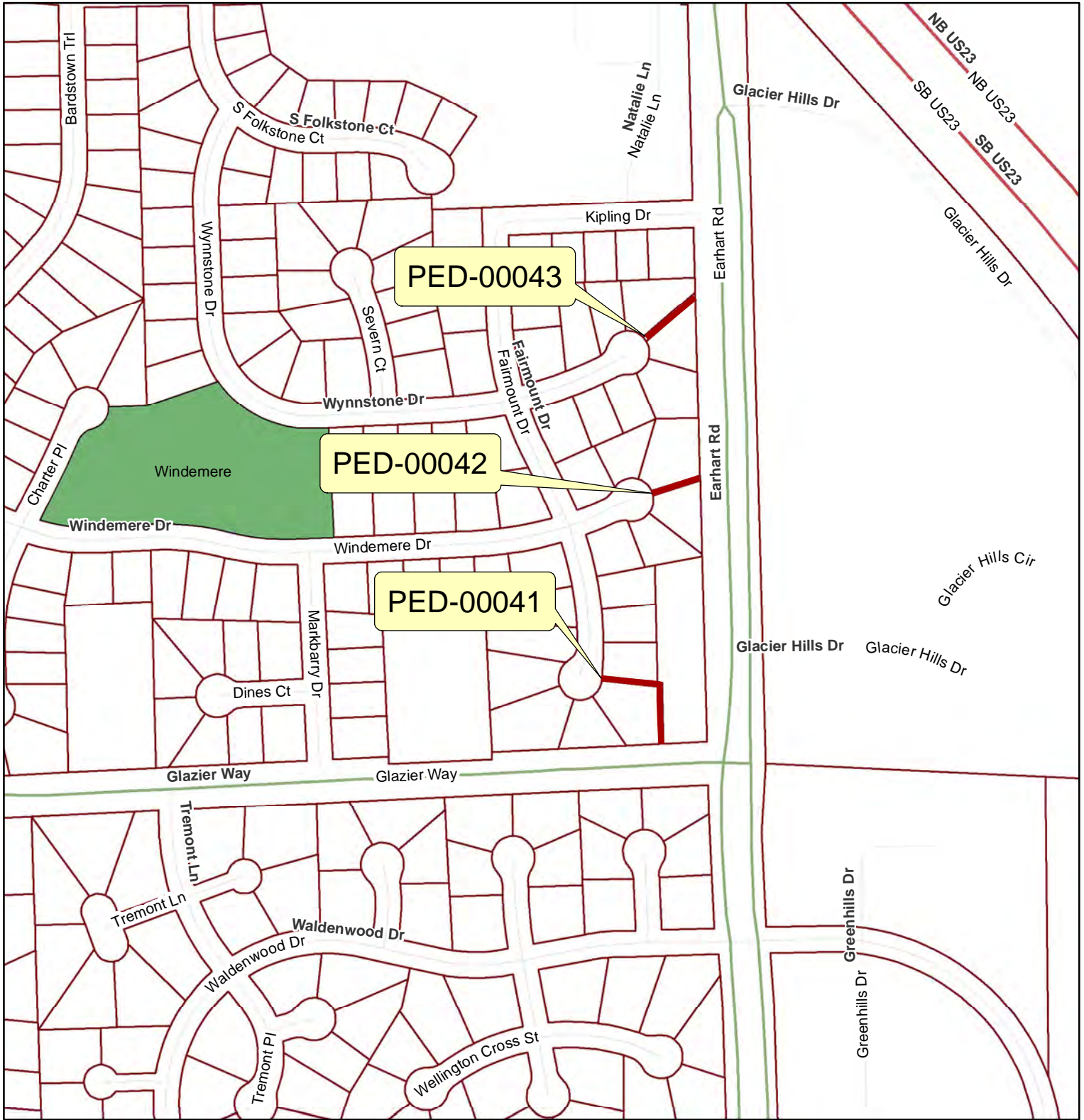


Copyright 2013 City of Ann Arbor, Michigan


No part of this product shall be reproduced or transmitted in any form or by any means, electronic or mechanical, for any purposes, without prior written permission from the City of Ann Arbor.

This map complies with National Map Accuracy Standards for mapping at 1 inch = 100 feet. The City of Ann Arbor and its mapping contractors assume no legal responsibility for the content and/or inappropriate use of information represented on this map.

# Crosslot Sidewalks: PED-00041, 00042, 00043



— Crosslot Sidewalk  
  Schools  
  Parks  
  University

No Scale 

Copyright 2013 City of Ann Arbor, Michigan

No part of this product shall be reproduced or transmitted in any form or by any means, electronic or mechanical, for any purposes, without prior written permission from the City of Ann Arbor.

This map complies with National Map Accuracy Standards for mapping at 1 inch = 100 feet. The City of Ann Arbor and its mapping contractors assume no legal responsibility for the content and/or inappropriate use of information represented on this map.

# Crosslot Sidewalks: PED-00044, 00045

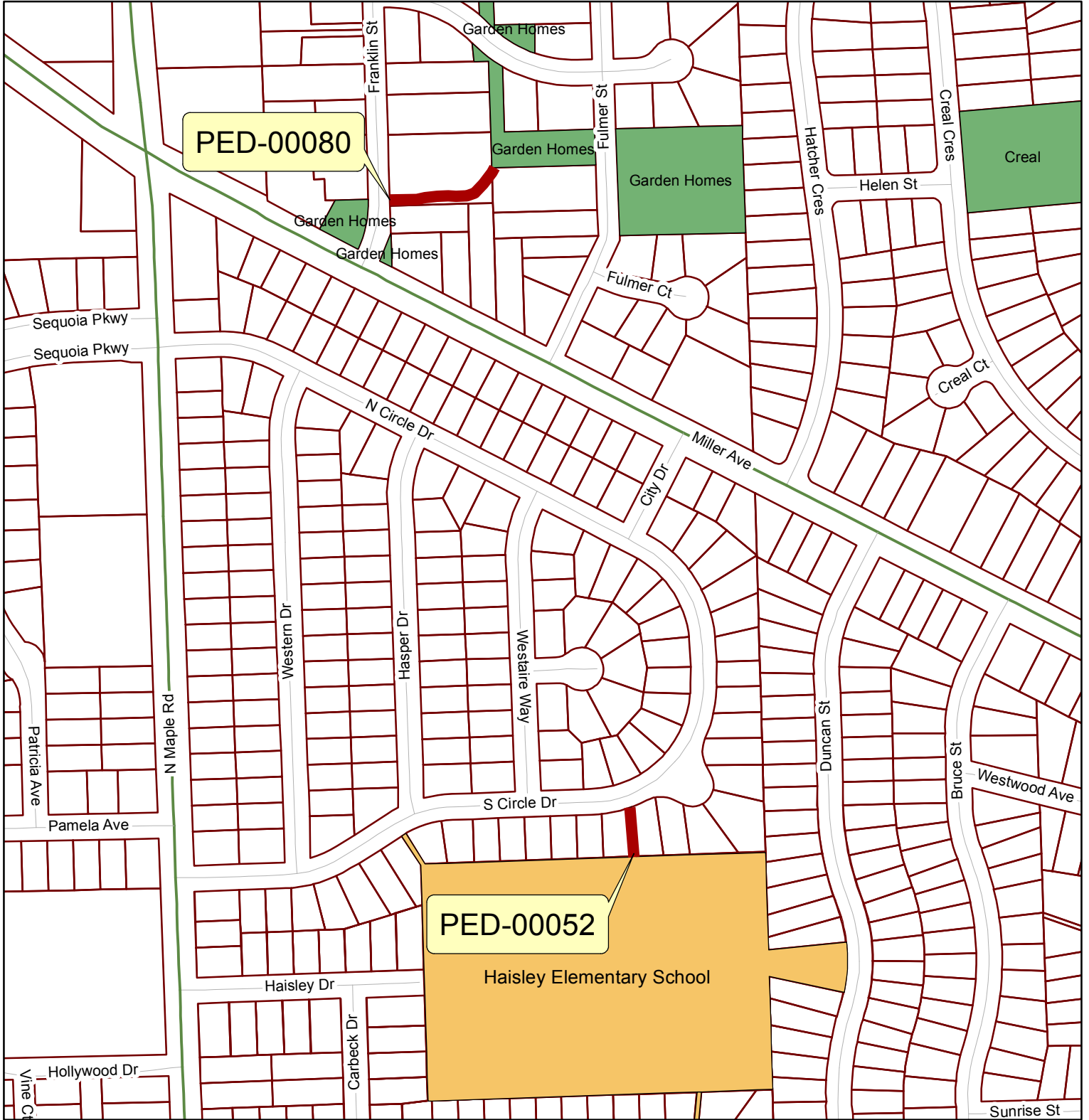


Copyright 2013 City of Ann Arbor, Michigan

No part of this product shall be reproduced or transmitted in any form or by any means, electronic or mechanical, for any purposes, without prior written permission from the City of Ann Arbor.

This map complies with National Map Accuracy Standards for mapping at 1 inch = 100 feet. The City of Ann Arbor and its mapping contractors assume no legal responsibility for the content and/or inappropriate use of information represented on this map.

# Crosslot Sidewalks: PED-00052, 00080

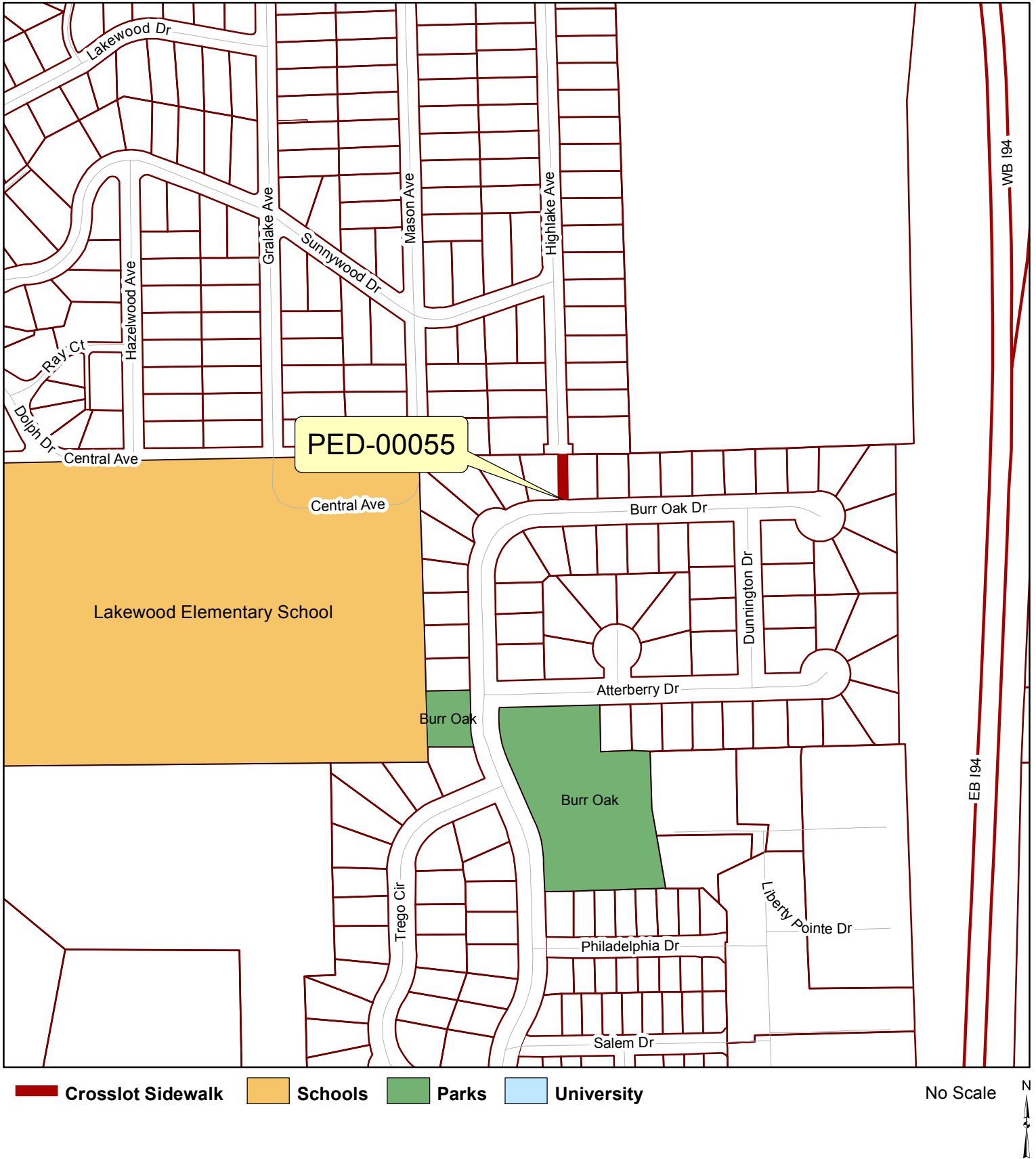


Crosslot Sidewalk
  Schools
  Parks
  University

No Scale

Copyright 2013 City of Ann Arbor, Michigan  
 No part of this product shall be reproduced or transmitted in any form or by any means, electronic or mechanical, for any purposes, without prior written permission from the City of Ann Arbor.  
 This map complies with National Map Accuracy Standards for mapping at 1 inch = 100 feet. The City of Ann Arbor and its mapping contractors assume no legal responsibility for the content and/or inappropriate use of information represented on this map.

# Crosslot Sidewalks:PED-00055



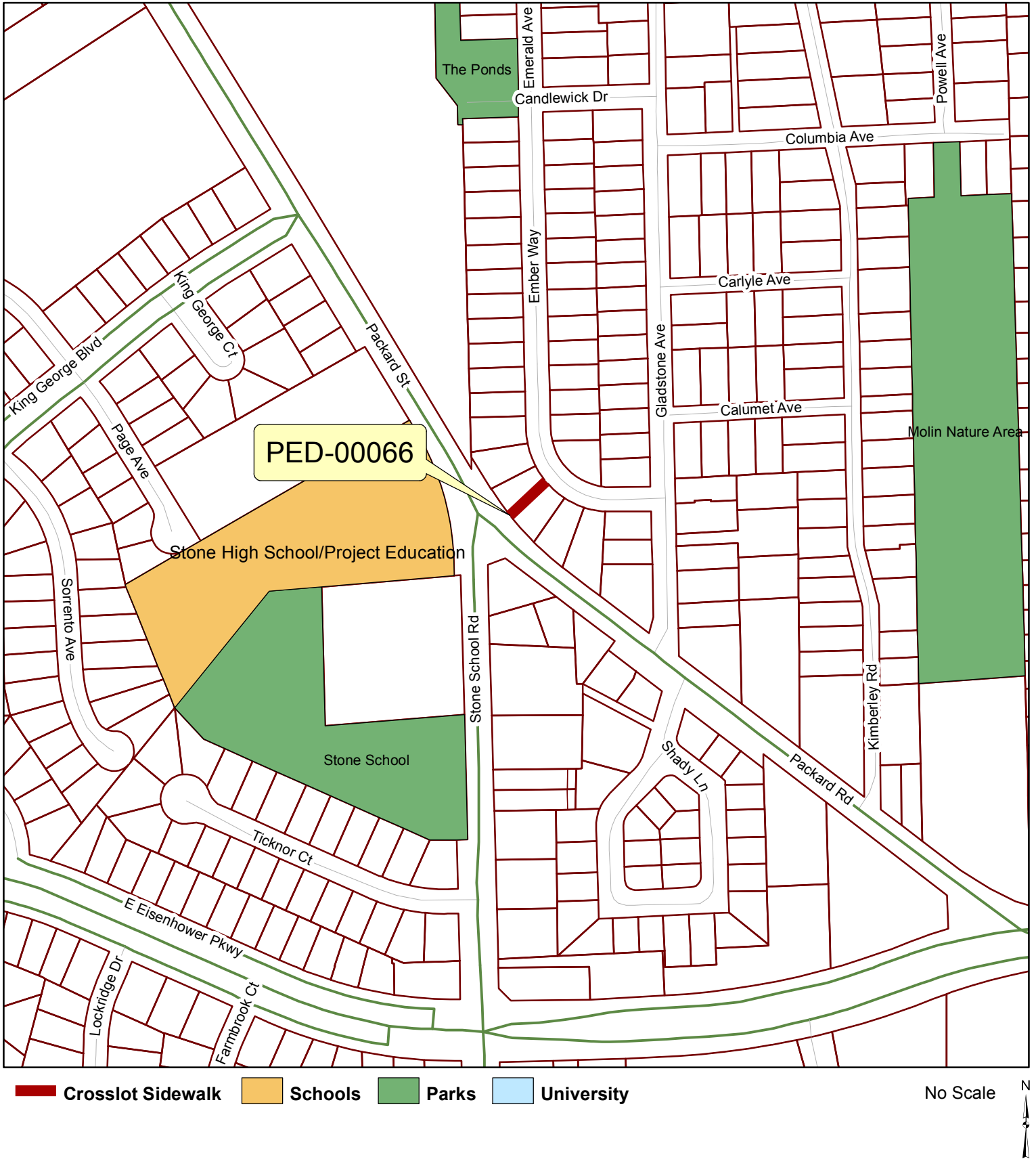
Copyright 2013 City of Ann Arbor, Michigan

No part of this product shall be reproduced or transmitted in any form or by any means, electronic or mechanical, for any purposes, without prior written permission from the City of Ann Arbor.

This map complies with National Map Accuracy Standards for mapping at 1 inch = 100 feet. The City of Ann Arbor and its mapping contractors assume no legal responsibility for the content and/or inappropriate use of information represented on this map.



# Crosslot Sidewalks:PED-00066



Copyright 2013 City of Ann Arbor, Michigan

No part of this product shall be reproduced or transmitted in any form or by any means, electronic or mechanical, for any purposes, without prior written permission from the City of Ann Arbor.

This map complies with National Map Accuracy Standards for mapping at 1 inch = 100 feet. The City of Ann Arbor and its mapping contractors assume no legal responsibility for the content and/or inappropriate use of information represented on this map.

# Crosslot Sidewalks:PED-00067



Copyright 2013 City of Ann Arbor, Michigan

No part of this product shall be reproduced or transmitted in any form or by any means, electronic or mechanical, for any purposes, without prior written permission from the City of Ann Arbor.

This map complies with National Map Accuracy Standards for mapping at 1 inch = 100 feet. The City of Ann Arbor and its mapping contractors assume no legal responsibility for the content and/or inappropriate use of information represented on this map.

# Crosslot Sidewalks:PED-00074



Copyright 2013 City of Ann Arbor, Michigan

No part of this product shall be reproduced or transmitted in any form or by any means, electronic or mechanical, for any purposes, without prior written permission from the City of Ann Arbor.

This map complies with National Map Accuracy Standards for mapping at 1 inch = 100 feet. The City of Ann Arbor and its mapping contractors assume no legal responsibility for the content and/or inappropriate use of information represented on this map.

# Crosslot Sidewalks:PED-00075



Copyright 2013 City of Ann Arbor, Michigan

No part of this product shall be reproduced or transmitted in any form or by any means, electronic or mechanical, for any purposes, without prior written permission from the City of Ann Arbor.

This map complies with National Map Accuracy Standards for mapping at 1 inch = 100 feet. The City of Ann Arbor and its mapping contractors assume no legal responsibility for the content and/or inappropriate use of information represented on this map.