

# Light Pollution

## An Environmental Problem in A2

### A2 Dark Sky Group:

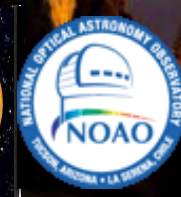
UM Astronomy  
University Lowbrow Astronomers  
UM Student Astronomical Society  
EMU Sherzer Observatory  
Washtenaw Safe Passage  
Detroit Audubon Safe Passage

Sally Oey

University of Michigan,  
American Astronomical Society

with help from IDA, NOAO,  
and J. Lowenthal

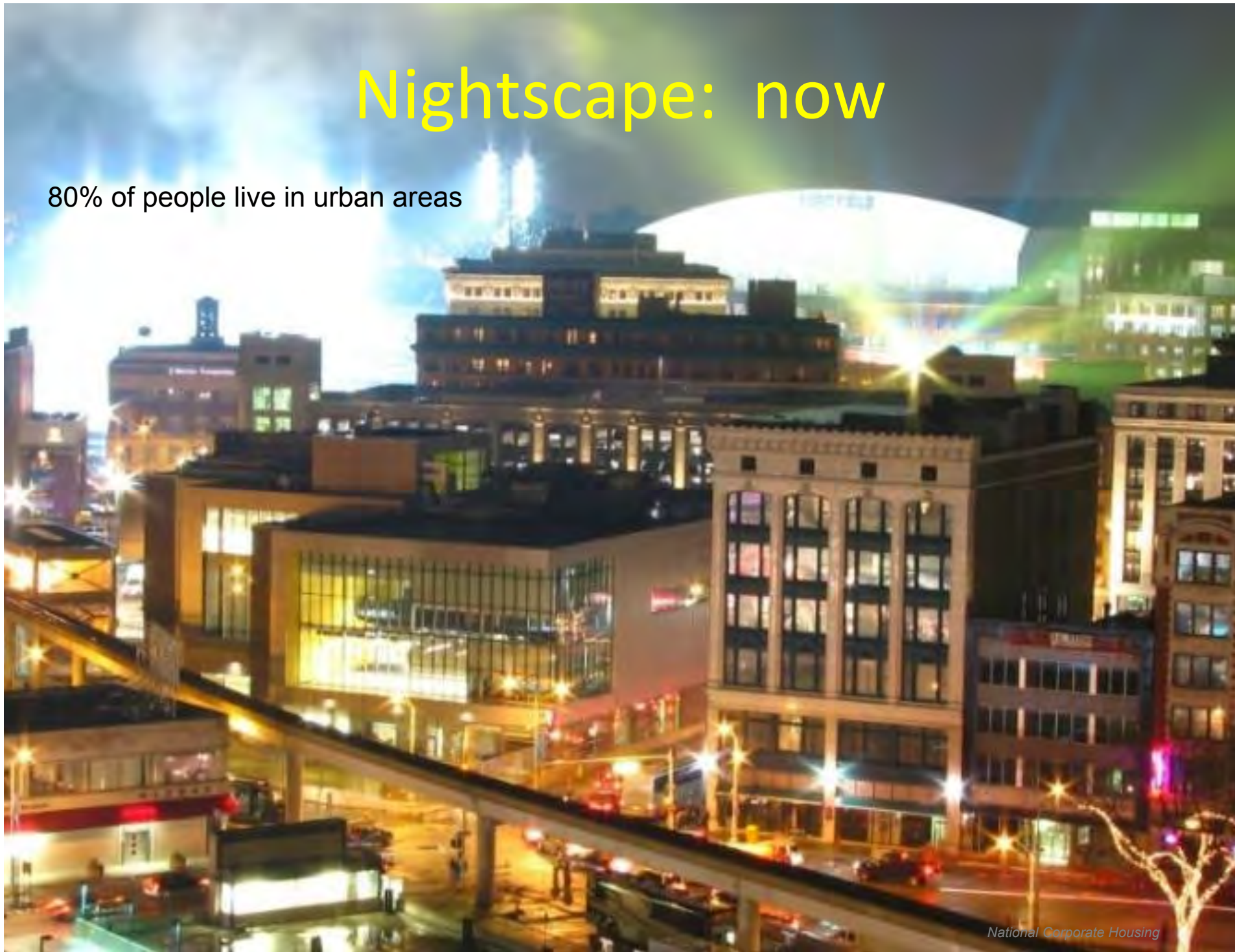
(Smith College, AAS Cmte on Light Pollution)





# Nightscape: now

80% of people live in urban areas



# What is light pollution?

- It is wasted light that performs no function or task

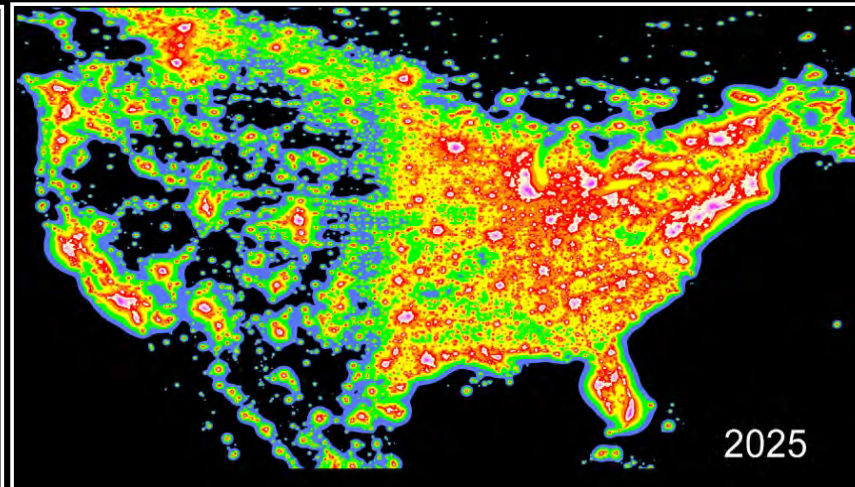
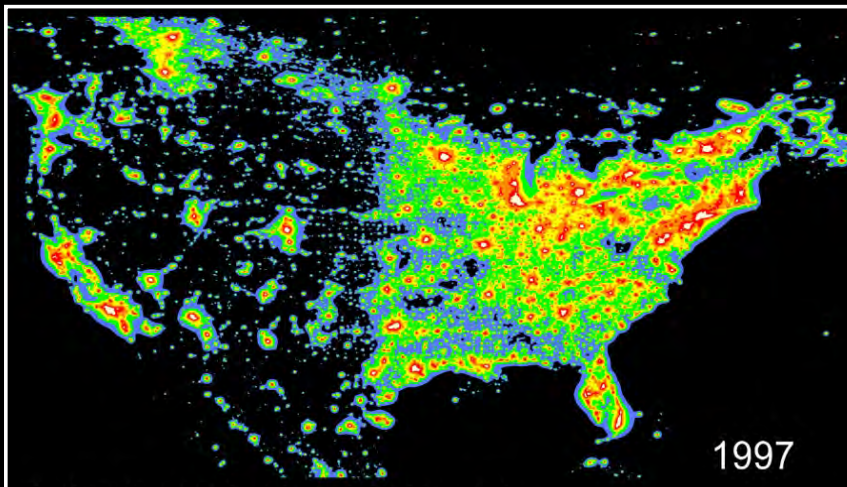
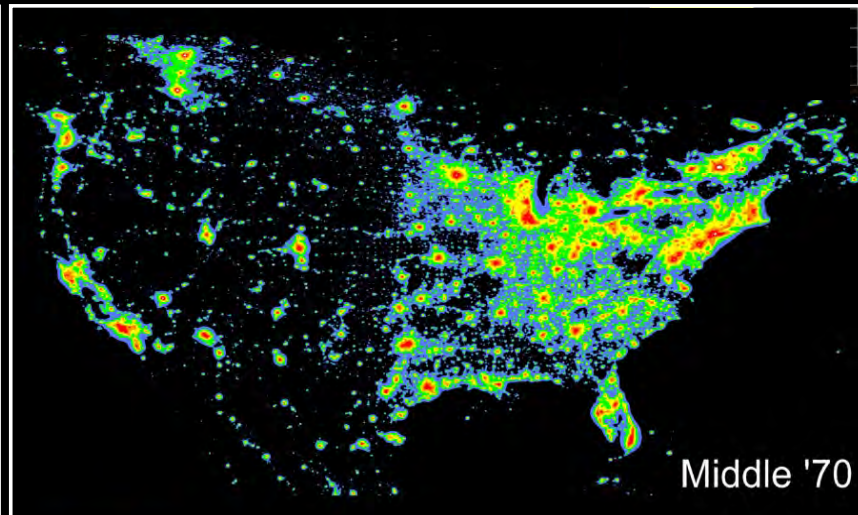
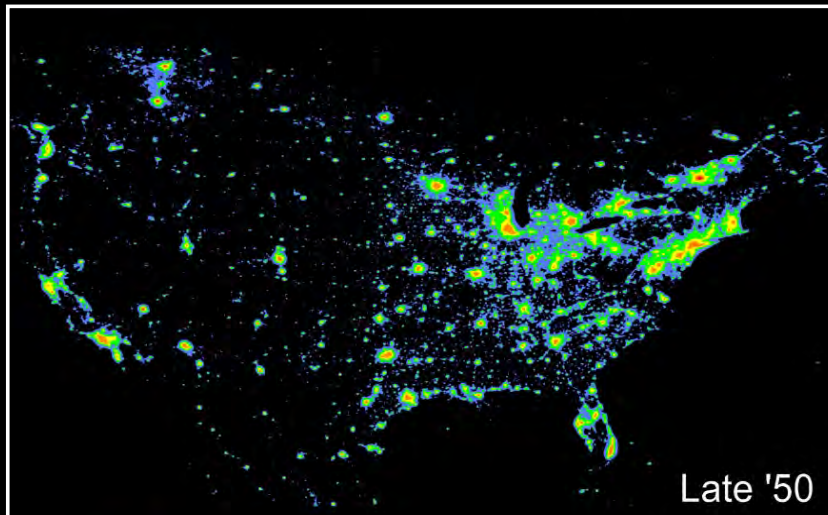
Light = Energy

CO<sub>2</sub> emission  
~ 3m cars ~ \$3B

## Wasted Energy

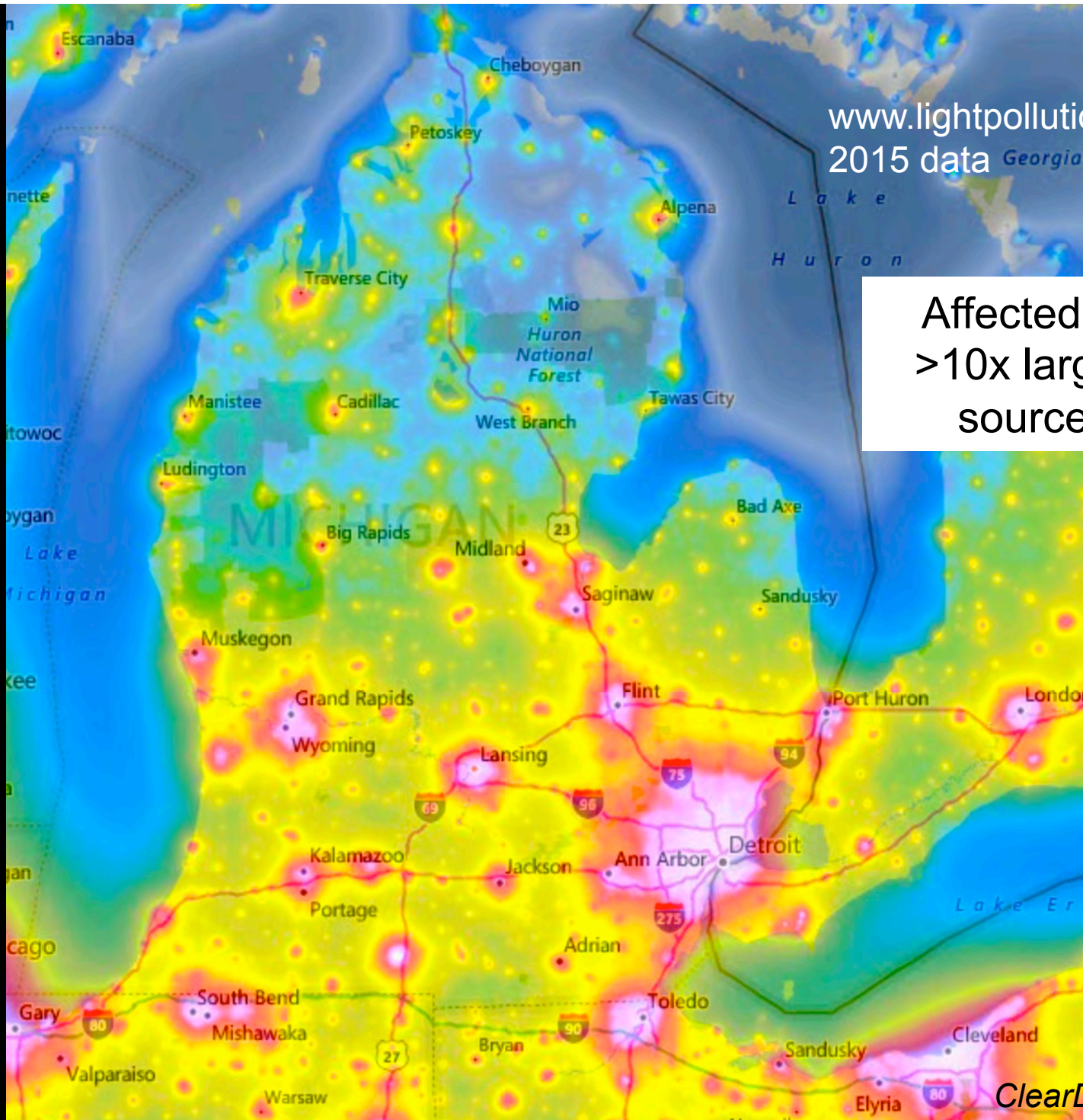






*Cinzano, Falchi, and Elvidge 2001*





[www.lightpollutionmap.info](http://www.lightpollutionmap.info)  
2015 data

Affected area is  
>10x larger than  
source area

# Negative Impact on Wildlife

- 24-hr circadian rhythm, and melatonin production, is disrupted by artificial lights.



The Nobel Prize in Physiology or Medicine 2017

Jeffrey C. Hall, Michael Rosbash, Michael W. Young

“for their discoveries of molecular mechanisms controlling the circadian rhythm”

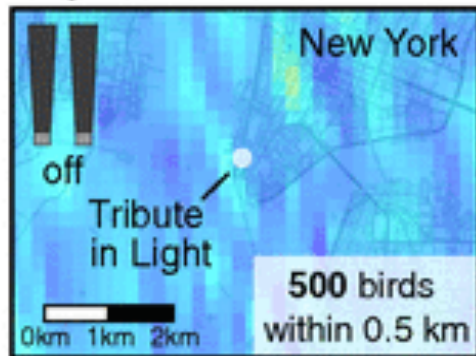
- Altered night interferes with wildlife migration, mating, feeding, and sleep.



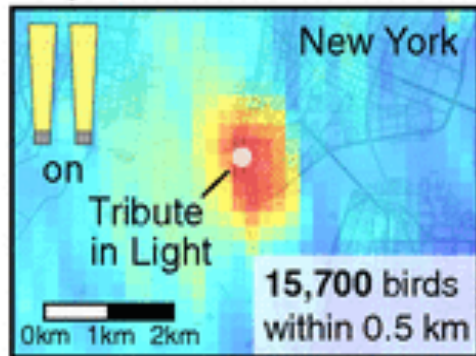
# Birds

## NYC 9/11 Tribute Lights

B Sept 12, 2015 02:12



C Sept 12, 2015 02:32



Low Number of birds High

- Thousands of birds “trapped”
- Need to turn off for 20-min intervals

*Van Doren et al. 2017, PNAS*



Yspi: 1 building, 1 day



H. Trudell

- Building collisions are #1 cause of bird death
- Birds migrate at night
- Up to a billion birds killed annually

FLAP Canada's Annual Bird Display / flap.org  
Royal Ontario Museum, 2016  
These 2100 birds, recovered by FLAP volunteers, died in window collisions.





# Birds



*Walton St. Capital*

- Washtenaw Safe Passage
- Safe Passage Great Lakes, Detroit Audubon Society
- Fatal Light Awareness Program (FLAP), Toronto
- ← • Chicago Lights Out Program



# Other Species



- Sea Turtles
- Insects: moths, fireflies, etc...
- Nocturnal pollinators
- Bats
- Fish, incl salmon
- ... and many more



# American Medical Association

## Report of the Council on Science and Public Health (2016)

*... some evidence supports a long-term increase in the risk for **cancer, diabetes, cardiovascular disease and obesity** from chronic sleep disruption or shiftwork and associated with exposure to brighter light sources in the evening or night.*

*... excessive blue wavelength. This feature further contributes to **disability glare**, i.e., visual impairment due to stray light, as blue wavelengths are associated with more scattering in the human eye, and sufficiently intense **blue spectrum damages retinas**.*

*It is well known that unshielded light sources cause pupillary constriction... This leads to worse vision than if the light never existed at all, defeating the purpose of the lighting fixture.*



# Astronomy: Our Connection to the Universe

- A fundamental science
- The night sky is the only astronomical lab of its kind
- Tech transfer
- Science education



BEYOND  
INTERNATIONAL YEAR OF  
ASTRONOMY

Northern Michigan



# 3 Types of Light Pollution:



## Glare

## Light Trespass



## Sky glow



# Glare reduces visibility



George Fleener



George Fleener

More light  $\neq$  more safe



More light ≠ more safe





More light ≠ more safe

# Stage Lighting

- Visible and safe? or vulnerable and exposed?
- Eye dark adaption compromised



**More light  $\neq$  more safe**



# Solutions are easy!

- **Light only what is needed**
- **Light no more than needed**
- **Light only when needed**

*Smart lighting, not more lighting*

# Brightness is exponential

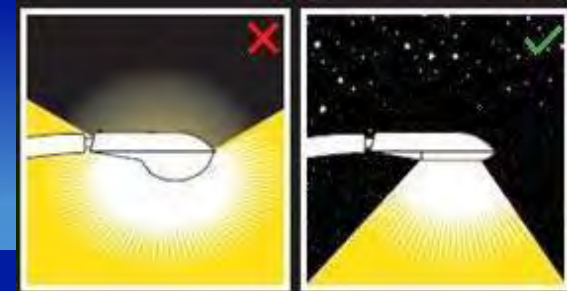
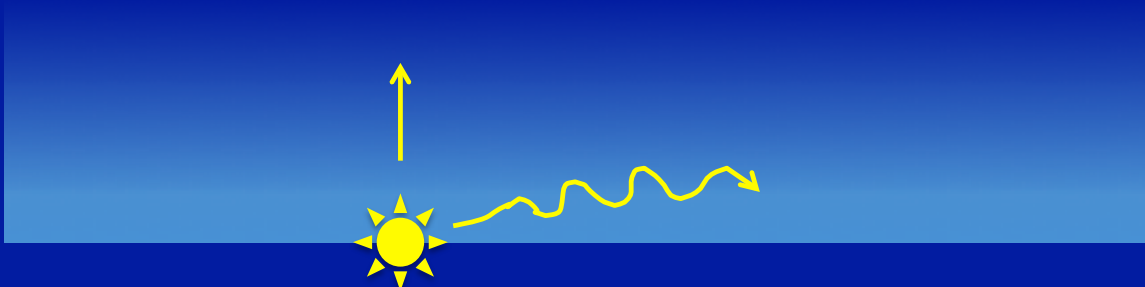
NOAO

**Full cutoff**  
**shielding is essential!**

i.e., zero uplight

Oblique upward angles  
scatter more than vertical!

Condition	Illumination
	( <i>ftcd</i> )
Sunlight	10,000
Full Daylight	1,000
Overcast Day	100
Very Dark Day	10
Twilight	1
Deep Twilight	.1
Full Moon	.01
Quarter Moon	.001
Starlight	.0001
Overcast Night	.00001





# Outdoor lighting should...

- Enhance visibility, not impede it
- Contribute to a nightscape, not dominate it
- Have a Master Plan

Good lighting design:  
No glare, trespass



# Outdoor lighting should...

- Provide safety for traffic and in areas where needed
- Facilitate use of outdoor spaces

UM Palmer Field Tennis Courts:  
Light pollution from globes,  
not from fully shielded court lights









# PURE MICHIGAN®

- 1200 people signed Ford Field petition



M. Dalal

<http://www.freep.com/story/news/local/michigan/2017/03/04/stars-light-pollution/98638932/>

**'SKULL ISLAND'**  
**Detroit's 'Kong' connection**  
 ENTERTAINMENT, 1E

**SUSAN SELASKY**  
 Grandmas know how to do Sunday dinner right  
 FEAST, 1D

**MARCH4TRUMP**  
 Supporters rally across state, nation for president  
 METRO, 4A

**45 39**  
 High Low  
**PRETTY DAY, BUT RAIN COMING**  
 FORECAST, 2A

**INDEX**

Bridge	2E	Horoscope	3D
Business	1B	My Best Life	1D
Classifieds	2A	Lottery	2A
Death	18A	Movie	4A
Free Press	Misses	3E	
Health	15A	Puzzles	2-3E
Local News	1F	Real Estate	1F
Obituary	22A	Sports	1C
Entertainment	1E	Towel	6E

98 MI. News 10  
 ©2017 Detroit Free Press. Printed on 100% recycled paper.

## LET THERE BE STARLIGHT

Preserving dark night skies necessary for humans, animals

**By Keith Matheny**  
 Detroit Free Press

As Charles Nielsen looks skyward, he's both enthralled by, and doesn't like, what he sees.

Nielsen is president of the University Lowbrow Astronomers Club in Ann Arbor, amateur stargazers who, since the 1970s, have run an observatory on Peach Mountain in rural Dexter Township, as well as their own, large telescope. Nielsen is just as dazzled by the heavens as he has ever been, but it takes travel to dwindling, remote locations to get the great views of yesteryear.

"There would have been a time that even in downtown Ann Arbor, you would have been able to see the Milky Way," a cloudy band in the night sky from the glow of millions of stars, part of the galaxy in which our solar system resides, he said. "You have to get to a fairly dark site now to see it."

For many in southeast Michigan, starry evening skies are just a childhood memory. As cities grew, so did the bright, artificial light they put

**See STARS, Page 14A**

## Would you be a wall j car pi

Vehicles sold \$2,500 more

Proposals for a bus with Mexico and facturing in the thousands of dollars to truck sold here, includ

**MARK PHELAN**  
 the umbrella group for firms representing 1,000 Analysts, association could add \$2,000 to \$2,500 vehicle sold in the U.S.  
 "This is a price men

## MDOT to build that las

Cost-effective pilot projects

**By Paul Egan**  
 Detroit Free Press

LANSING — Didn't it It's a common c motorists when they et familiar location.

The Michigan Depta now trying to find out v build better roads that

Most Michigan Free life. In pilot projects th build stretches of road years, respectively.

Not only should the tal stretches of road buta ties are expected to prequire less maintenance. But they won't come





22 member amateur clubs in SE MI



“Astronomy at the Beach”

One of the largest amateur astronomy communities in the US



# HEADLANDS

International Dark Sky Park

- 6<sup>th</sup> IDA Dark Sky Park, 2011
- Near Mackinaw City
- Emmet County Park
- Founded by non-astronomers
- State of Michigan  
*Pure Award 2017*
- IDA Prize:  
*Best Dark Sky Place 2017*



# 6 MI State Parks are Dark Sky Preserves



# Lighting Regulations

- Detroit
- Scio Township
- Brighton Township
- State of Michigan Dark Sky Preserves 2012, 2016
- Safe Passage Great Lakes Days

Mar 15 – May 31, and Aug 15 – Oct 31

- Ann Arbor Resolution 2009
- State of Michigan, Governor's Proclamation 2012





Light pollution control is consistent with City of A2 environmental initiatives.



# Ann Arbor

Pioneering, award-winning LED conversion pilot project, 2006 – 2011

- Savings 850,000 kWh = \$180k / yr
- 2007 ICLEI Climate Innovation Invitational Award
- 2009 Energy Globe, US award
- National press: *NYT*, *Nat Geo*

“Glaring” omission:  
Light pollution!





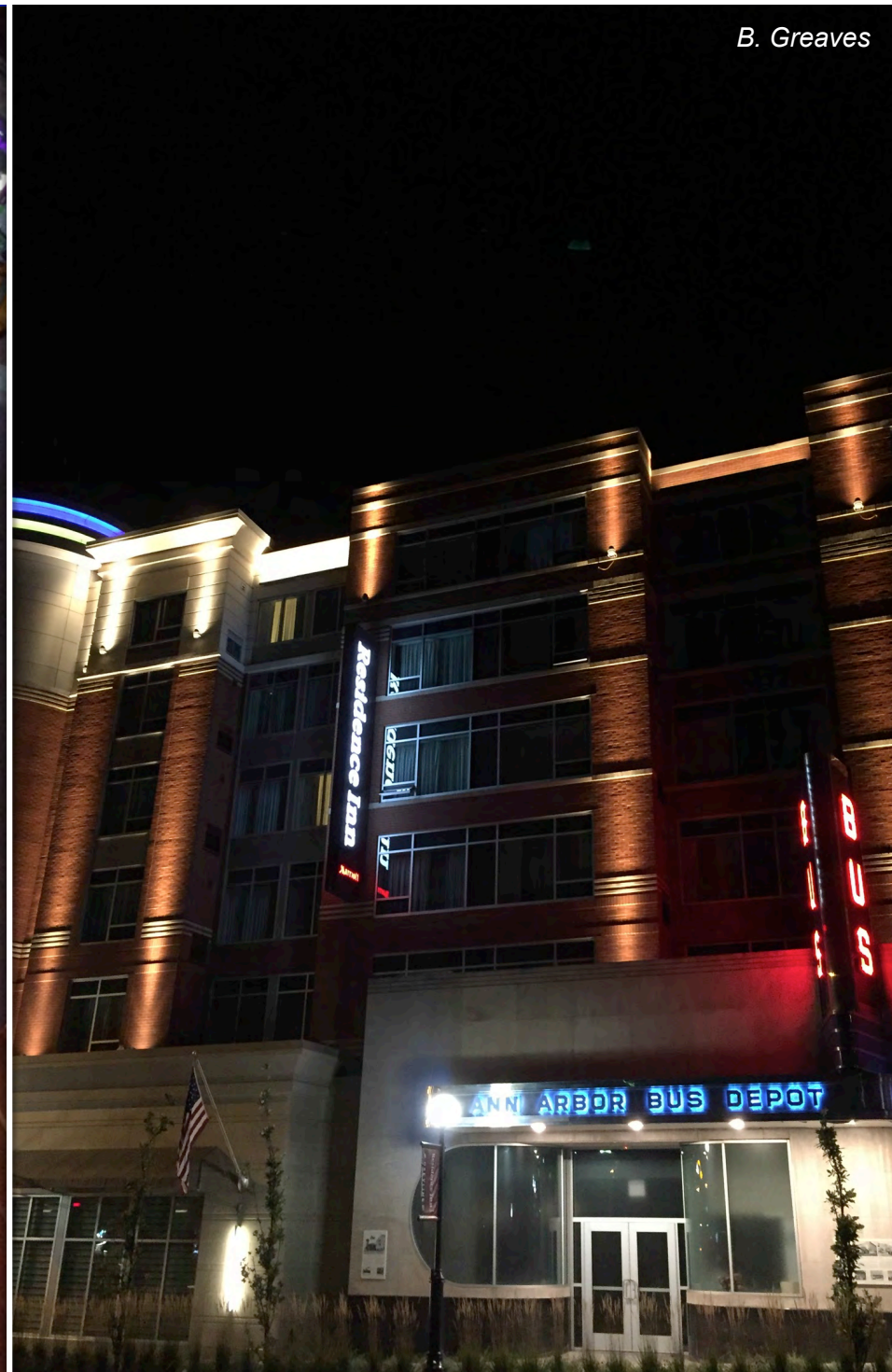


Washington / 4th St.

"Downward facing" LED globes

Upward pointing  
light on parking  
structure

B. Greaves



# Ann Arbor

Multiple Dark Skies initiatives over ~15+ years:

- University Lowbrow Astronomers ~2003
- Safe Passage Great Lakes Days 2009
- Burns Park trial ~2012
- Burns Park discussion 2016
- Current initiative 2017

LED Project Executive Summary (2011):

*...Finally, because LEDs emit directional light, we have more control over what we light (streets and sidewalks) and what we don't (the night sky). **This makes for easier compliance with the Dark Skies Initiative**, which aims to reduce light pollution and its associated wildlife impacts.*



- City of Ann Arbor Climate Action Plan (2012) – **no mention:**

*EB-4: Promote the use of efficient lighting technologies for both outdoor and indoor applications*

- Resolution to proceed major project to replace pedestrian globe lights (2017)

- Revision to Zoning Code (2017):

*(5) (a) Buildings and additions constructed after the effective date ...in the downtown character overlay zoning districts ...shall comply with the following building design requirements:*

*1. ...*

*2. A minimum of 60% of the street-level facade shall be transparent windows or glazing.*



HOOPER HATHAWAY P.C.

422

BRAND

17th Street

The Building  
for the  
City of  
St. Louis



# Needed

1. Inclusion of light pollution control in A2 Climate Action Plan
2. City Ordinance to control light pollution
3. City lighting audit and environmentally responsible Lighting Plan
4. Modification of globe light specs to specify *max* color temp and *max* lumen output
5. ... ??



# Controlling Light Pollution:

Develop environmentally responsible plan to:

light only what is needed, no more than needed,  
and when needed.

- Restore natural environment and habitat
- Save energy
- Improve safety
- Improve health
- Reconnect with the night sky

Supports A2 and Michigan values



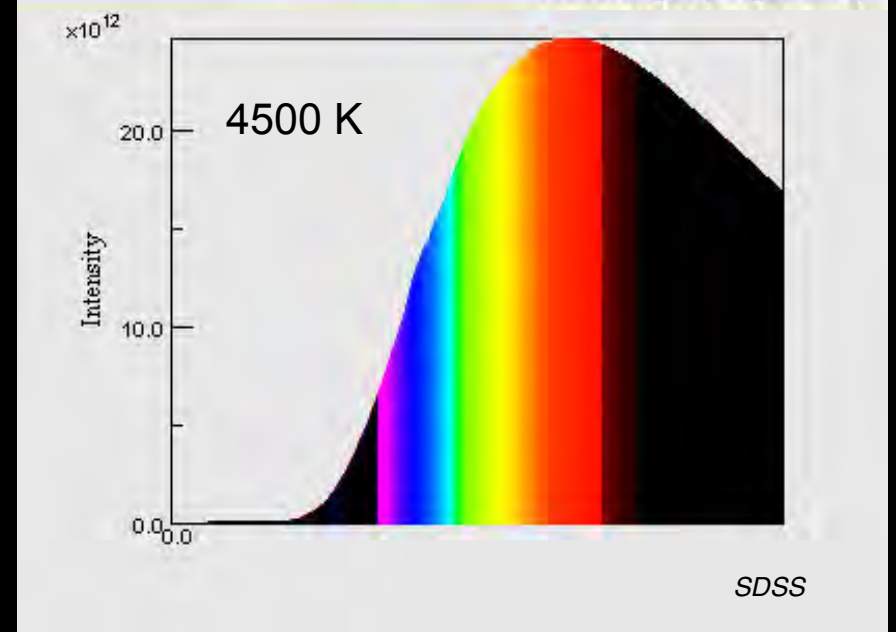
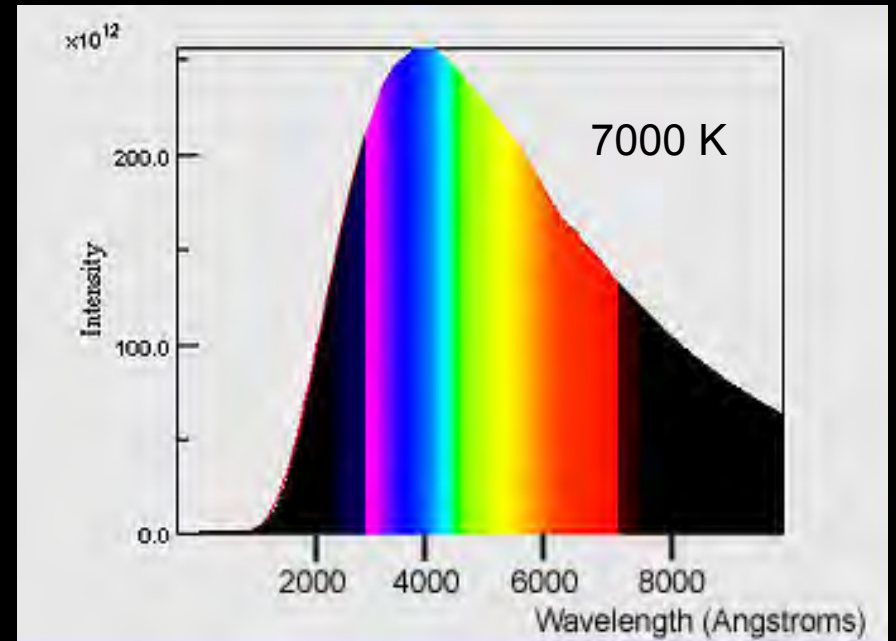
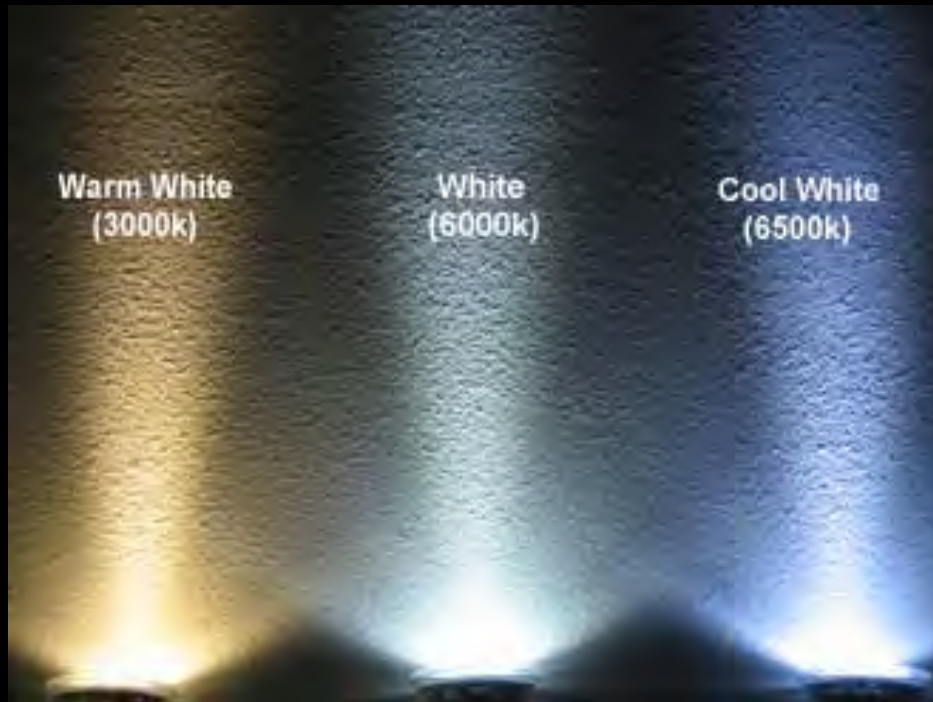


# Supplementary Slides

These are additional from pptx  
obtained from NOAO or IDA, etc.



# Color temperature



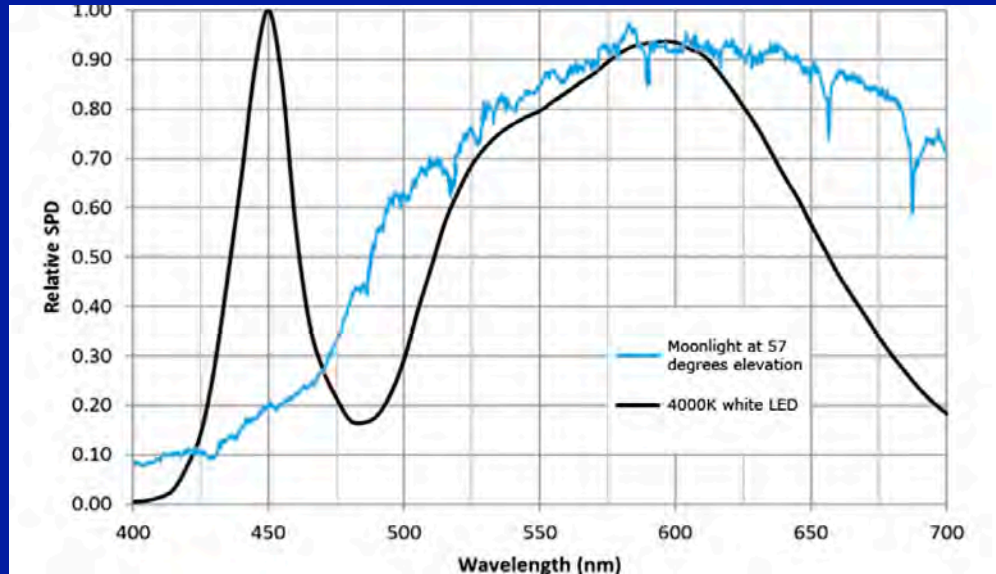
# Color temperature should be < 3000 K

Ideally < 2500 K

- Blue light scatters far more strongly  
 $\lambda^{-4}$  : 500 nm scatters 2x more than 600 nm
- Causing more glare
- Blue destroys night vision more than red
- Blue light causes **3-5x more light pollution** than fully shielded, high-pressure sodium



## Caution: color temp can be misleading



Both have Correlated Color Temperature", CCT = 4000 K

To match thermal spectrum, Color Rendering Index CRI = 100

**Different wildlife see different color equivalencies!**