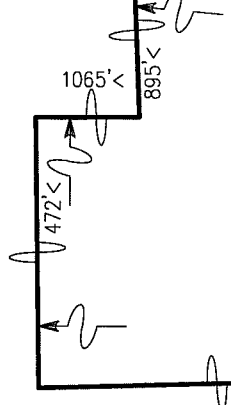


SEC. 25, 26, 35 & 36, T02S, R06E
CITY OF ANN ARBOR
WASHTENAW COUNTY

091

W 1/4 CORNER

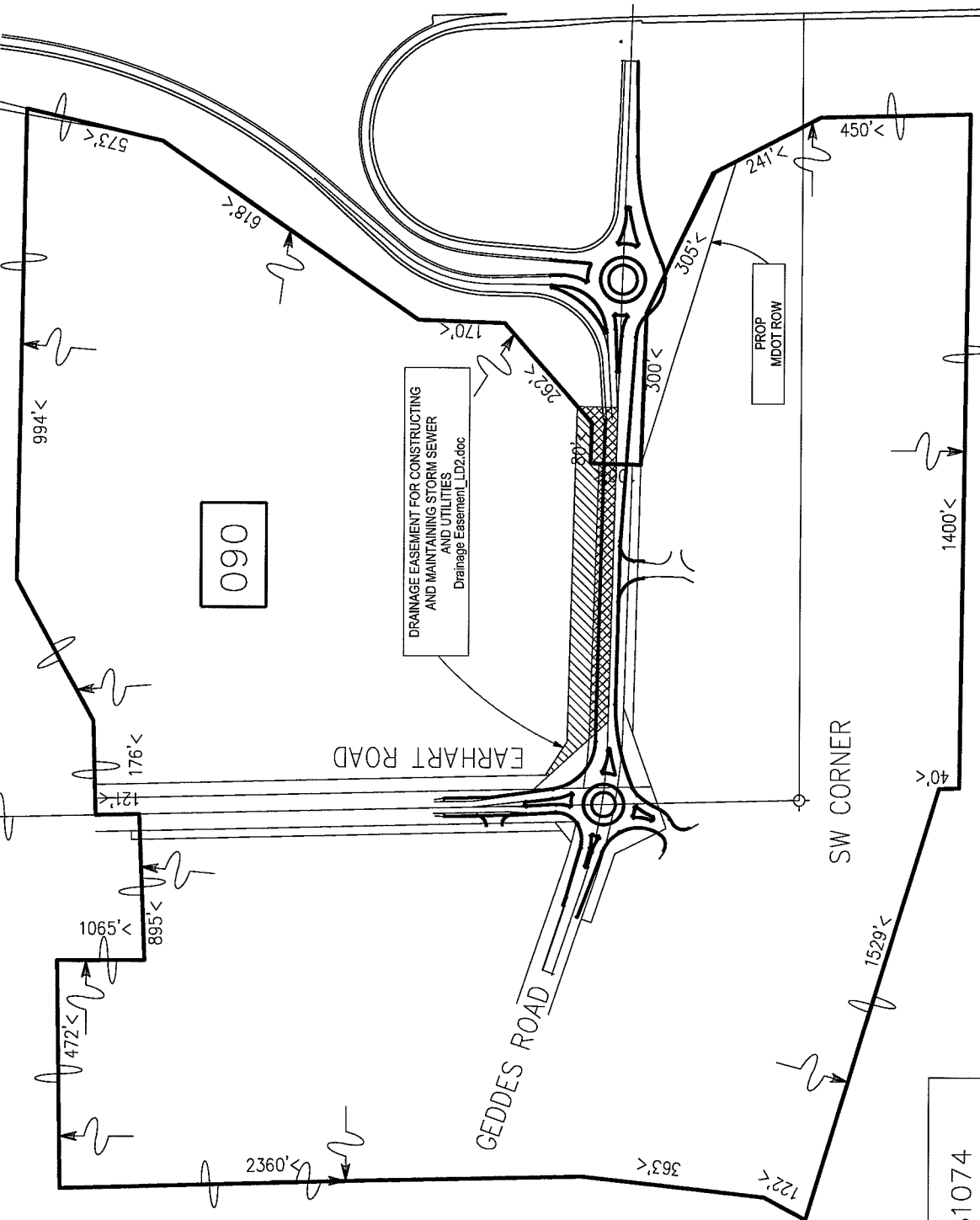


090

DRAINAGE EASEMENT FOR CONSTRUCTING
AND MAINTAINING STORM SEWER
AND UTILITIES
Drainage Easement_LD2.doc

EARHART ROAD

GEDDES ROAD

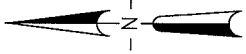


PROP
MIDDOT ROW

HURON RIVER

SW CORNER

CONTROL 81074
JOB NO. 87939B
PARCEL 90



SCALE
1"=300'
DRAWN MF 4/09
REV DD 7/09

Exhibit "A"

US-23

US-23