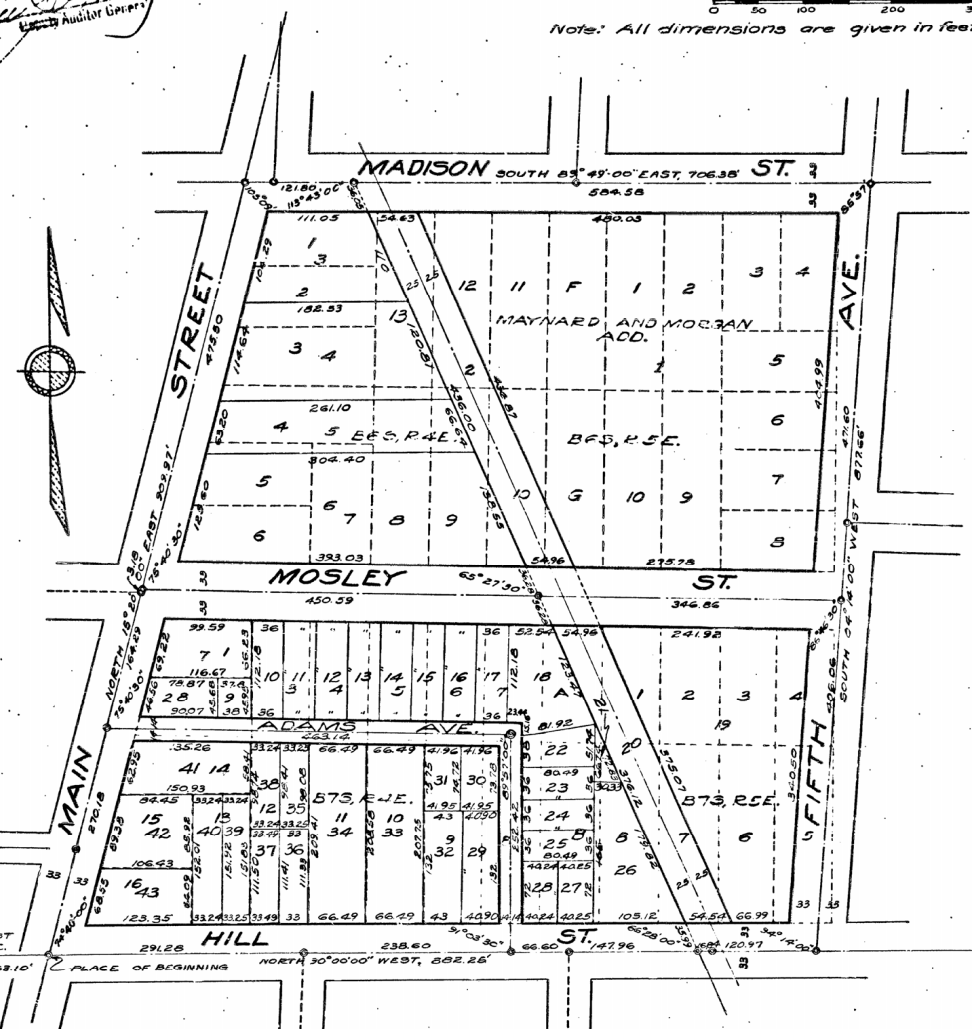


FILED IN AUDITOR GENERAL'S OFFICE
 1936
 Examined and Approved
 Auditor General

I HEREBY CERTIFY THAT THIS COPY IS A TRUE AND CORRECT COPY OF THE ORIGINAL AS SUBMITTED TO ME
 1936
 Auditor General

(Copy)
"ASSESSOR'S FLAT NO. 30"
 BEING A REPLAT OF BLOCKS 6 AND 7 SOUTH, RANGES 4 AND 5 EAST, MAYNARD AND MORGAN'S ADD. TO THE CITY OF ANN ARBOR,
CITY OF ANN ARBOR
WASHTENAW Co. MICHIGAN
 Scale: One Inch = One Hundred Feet.
 Note: All dimensions are given in feet and decimals thereof.

register's Office
 Washtenaw County
 Plat of Assessor's Flat No. 30
 City of Ann Arbor
 was approved this 1st day of June A.D. 1936 at 4:42 O'Clock P.M. in Room 9 of State
 34
 Katherine H. Sanderburgh
 Registrar of Deeds
 ORIGINAL ON FILE



DEDICATION

KNOW ALL MEN BY THESE PRESENTS: That I, Herbert W. Crippen, Assessor of the City of Ann Arbor, Washtenaw County, Michigan, by virtue of authority in me vested by Section 51, Act 172, P.A. of 1929, having been duly authorized by the Common Council of the City of Ann Arbor, Washtenaw County, Michigan, have caused the land described in the annexed plat to be surveyed, laid out and platted, to be known as Assessor's Flat No. 30, being a replat of Blocks 6 and 7 South, Ranges 4 and 5 East, Maynard and Morgan's Add. to the City of Ann Arbor, being a part of S.E. Quarter of Section 29, Town 2 South, Range 6 East, Michigan, in the City of Ann Arbor, Washtenaw County, Michigan, and that the streets and alleys as shown on said plat are now being used for such purposes.

Witnessed
 Carl A. Schellhorn
 Herbert W. Crippen
 Assessor of the City of Ann Arbor
 Washtenaw Co. Michigan

ACKNOWLEDGMENT

STATE OF MICHIGAN } S.S.
 COUNTY OF WASHTENAW }
 On this 1st day of June A.D. 1936, before me a Notary Public in and for said county personally came the above named Herbert W. Crippen, Assessor of the City of Ann Arbor, Washtenaw County, Michigan, known to me to be the person who executed the above dedication and acknowledged the same to be his free act and deed as such Assessor.
 Clara M. Mast
 Notary Public in and for Washtenaw County, Michigan.

My Commission expires June 23-1936
DESCRIPTION
 Commencing at the South Quarter post of Section 29, Town 2 S, Range 6 E, Michigan, thence N. 90° 00' 00" E, 163.10 feet to the Place of Beginning of the Center Line of Main St., thence N. 15° 20' 00" E, 909.97 feet, thence S. 89° 49' 00" E, 706.38 feet, thence S. 04° 14' 00" W, 877.66 feet, thence N. 90° 00' 00" W, 882.25 feet to the Place of Beginning.

SURVEYOR'S CERTIFICATE

I hereby certify that the plat hereon delineated is a correct one and that permanent metal monuments of not less than one inch in diameter and fifteen inches in length set in a concrete base at least four inches in diameter and forty eight inches in length have been placed at all points marked thus @ as hereon shown at all angles in the boundaries of land platted, at all the intersections of streets, intersections of alleys, or of streets and alleys and at the intersections of streets and alleys with the boundaries of the plat as shown on said plat.
 George H. Sanderburgh
 Registered Civil Engineer

STATE OF MICHIGAN } S.S.
 COUNTY OF WASHTENAW }
 Geo. H. Sanderburgh of Ann Arbor, Washtenaw Co. Michigan, deposes and says that he is the City Engineer of said City of Ann Arbor and that he has ordered an Assessor's Plat entitled, "Assessor's Flat No. 30, being a replat of Blocks 6 and 7 South, Ranges 4 and 5 East, Maynard and Morgan's Add. to the City of Ann Arbor," and that lot No. 21 as shown on said plat which has no apparent outlet is owned by the owner of lot No. 20, and has an outlet over lot 20 to a public highway.

CERTIFICATE OF MUNICIPAL APPROVAL

This plat was approved by the Common Council of the City of Ann Arbor, Washtenaw County, Michigan, at a meeting held this 1st day of June, 1936.
 Ted Cunn
 City Clerk
 This plat was approved by the Board of Public Works of the City of Ann Arbor, Washtenaw County, Michigan, at a meeting held this 1st day of June, 1936.
 Ted Cunn
 City Clerk

CERTIFICATE OF APPROVAL BY BOARD OF COUNTY AUDITORS

Approved by the Board of County Auditors of Washtenaw County, Michigan, this 21st day of June, 1936.
 L. O. Rushing
 Chairman
 Elmer L. Brown
 Otto J. Luick

Subscribed and sworn to before me this 1st day of June, 1936.
 Clara M. Mast
 Notary Public in and for Washtenaw Co.
 My Commission expires June 23-1936

26580