



ANN ARBOR
MOVING
TOGETHER

TOWARDS VISION ZERO

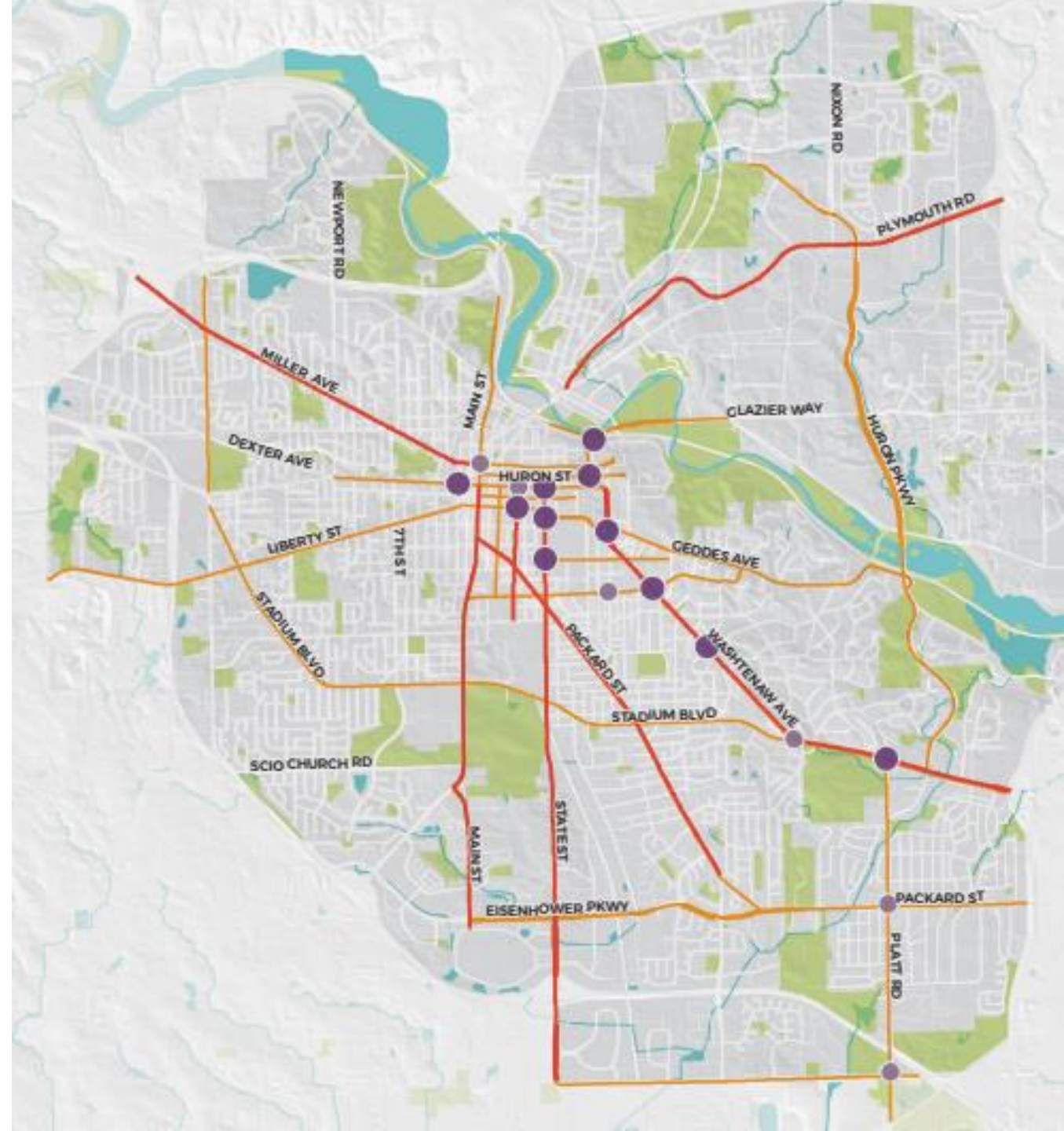


Updated Tiered Corridors and Intersections

- **Tier 1** Focus Corridors
- **Tier 2** Focus Corridors
- **Tier 1** Focus Intersections
- **Tier 2** Focus Intersections

Existing Tiered Locations

2014-2018 Data



Purpose of Tiered Locations

- Obtain Vision Zero goal outlined in plan
- Identify high crash severity and frequency locations
- Provide focused attention for capital investment
- Prioritize investment in the Capital Improvement Plan (CIP)
- Page 27-28 in plan

Methodology Overview:

- 2019-2023 data
- New segmentation for corridors
- Added AAPD crash investigations for scoring
- Manual changes
- Update every 2 years

Segments

- ❑ Segments shorted to align with constructability
- ❑ Adjusted based upon adjacent land use, posted speed limits

Points Allocation

- ❑ Fatality and AAPD Serious Injury Callouts = 50
- ❑ Serious injury = 30
- ❑ B injury = 10
- ❑ C injury = 1
- ❑ Property damage = 0.5

Manual Changes

- ☐ Removed Moore corridor
- ☐ Removed East Medical Center corridor
- ☐ Removed Washtenaw at Wilmot
- ☐ Removed Washtenaw at Forest

Intersections and Corridors

Plan Strategy

Focus transportation investments on corridors and intersection with the most serious crashes – *page 27 in plan*

Tier 1 Intersections

E Ellsworth Rd and Platt Rd

E Huron St and Division St

E Liberty St and S Division St

Hill St and E University Ave

*Huron St and Main St

*Jackson Ave and Maple Rd

*N Main St and Kingsley St/Beakes St

*W Huron St and Chapin St/Third St

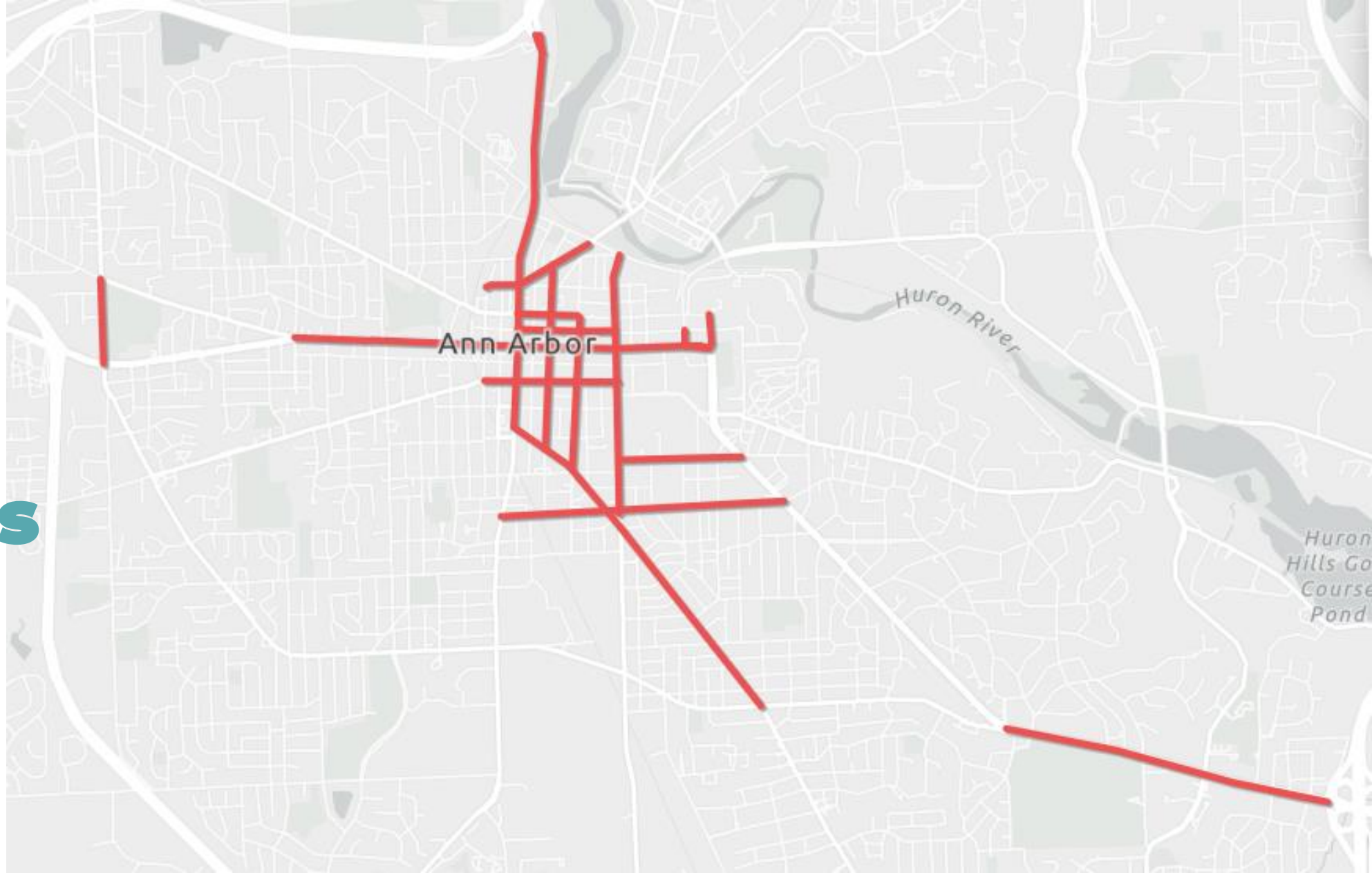
*W Huron St and First St

*Washtenaw Ave and Hill St

*Washtenaw Ave and Platt Rd

*Denotes MDOT owned roadway

Tier 1 Corridors



Tier 2

Intersections and Corridors

Plan Strategy

Focus transportation investments on corridors and intersection with the most serious crashes

Tier 2 Intersections

Ann Arbor Saline Rd and W Eisenhower Pkwy

E Eisenhower Pkwy and Stone School Rd

*E Huron St and Fifth Ave

*E Huron St and Fourth Ave

Glen Ave and E Ann St

Huron Pkwy and Glazier Way

*Jackson Rd and Highlake Ave

*N Main St and Depot St

*N Main St and Summit St

Packard St and E Stadium Blvd

*Denotes MDOT owned roadway

S State St and E Eisenhower Pkwy

S State St and Victors Way

S State St and W Ellsworth Rd

*W Huron St and Seventh St

W Stadium Blvd and Thaler Ave

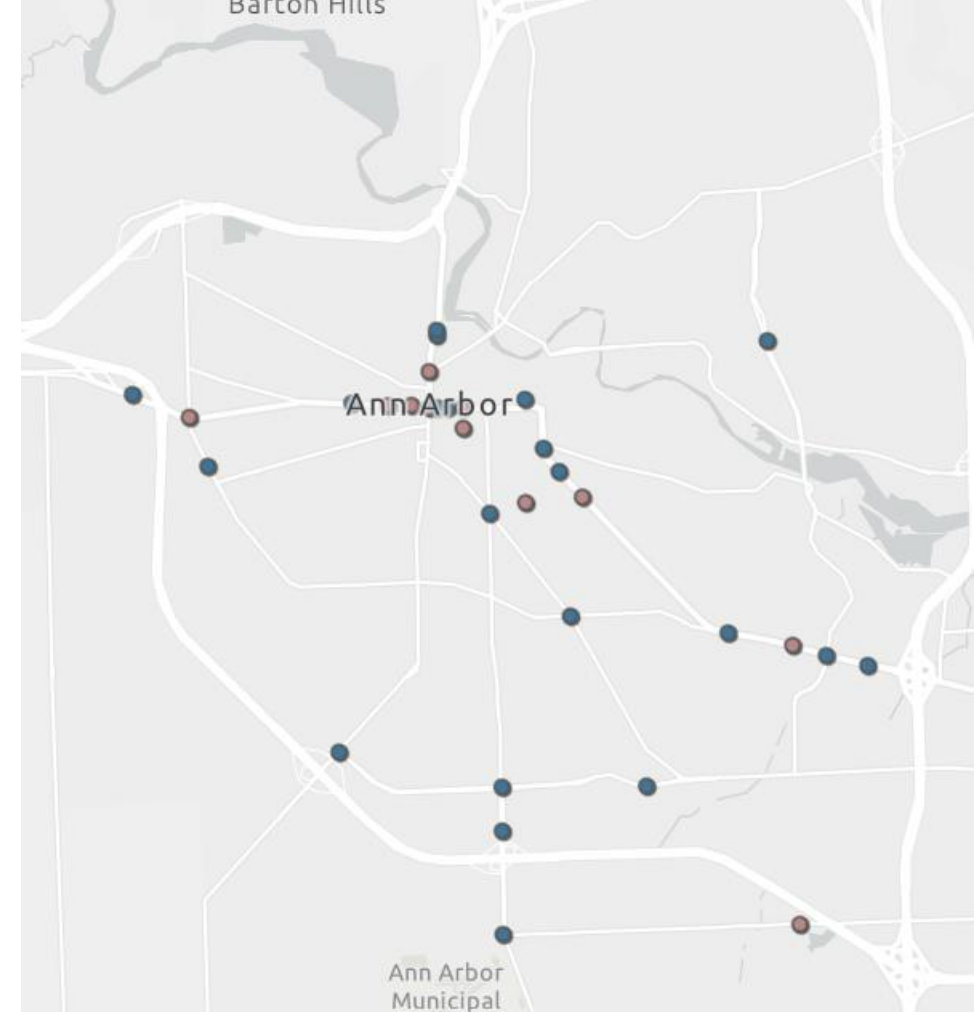
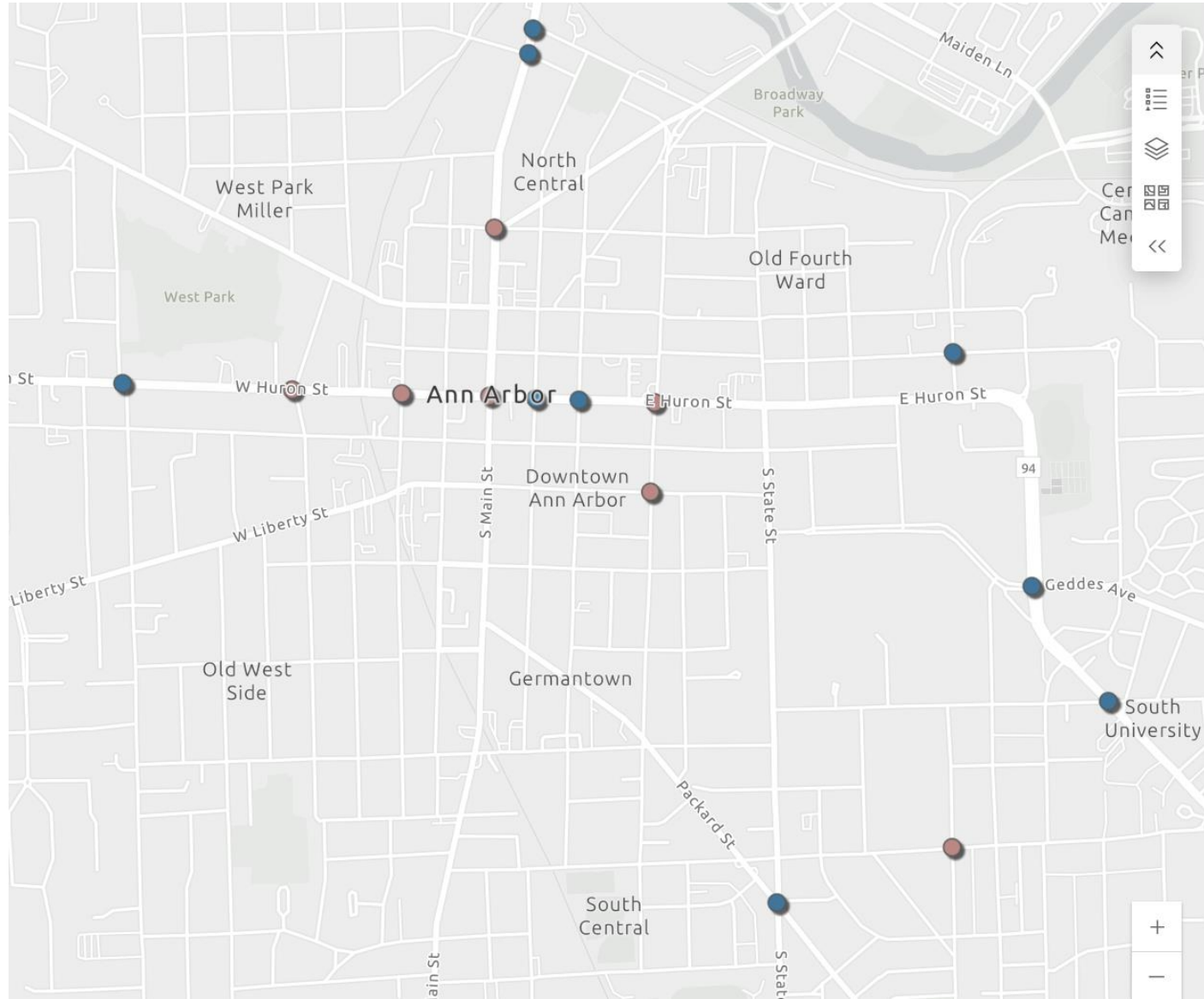
*Washtenaw Ave and Geddes Ave

*Washtenaw Ave and Huron Pkwy

*Washtenaw Ave and Manchester Rd/Sheridan Rd

*Washtenaw Ave and Pittsfield Blvd

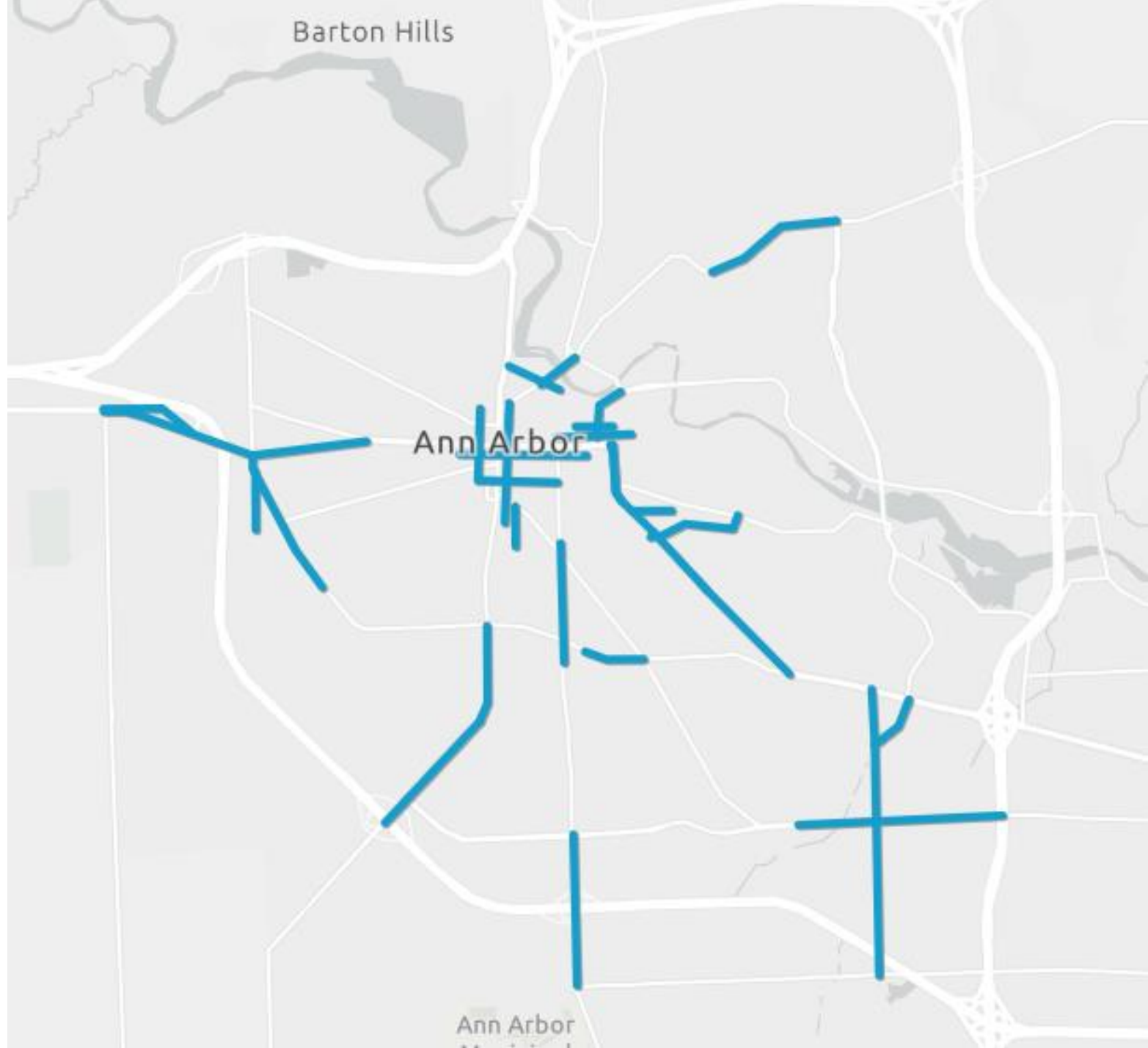
Tier 1-2 Intersections



Tier 1 = Red

Tier 2=Blue

Tier 2 Corridors



Summary Information

Tier 1-2 Intersections

City Roadways

Tier 1 - 27%

3 of 11 on city streets

Tier 2 - 50%

10 of 20 on city streets

MDOT Roadways

Tier 1 - 72%

8 of 11 on MDOT roadway

Tier 2 - 50%

10 of 20 on MDOT roadway

Summary Information

Tier 1-2 Corridors

City Roadways

Tier 1 - 66%
8 miles

Tier 2 - 84%
17 miles

MDOT Roadways

Tier 1 - 34%
*4 miles

Tier 2 - 16%
3 miles

What is the Difference between Tier 1 and Tier 2

- Tier 1 corridors and intersections are seeing more fatal, AAPD crash investigations, and serious injury crashes than other streets in the city.
- Tier 2 corridors and intersections are seeing less crashes than Tier 1 corridors but more than the average roadway in Ann Arbor
- Tier 1 & 2 corridors and intersections also focuses on vulnerable road user crashes

Next Steps

- Update the methodology information on the website
- Utilize the 2025 Tier 1-2 corridors and intersections in the development and scoring of new CIP in 2026
- Utilize 2025 Tier 1-2 intersections and corridors in planning studies

Questions