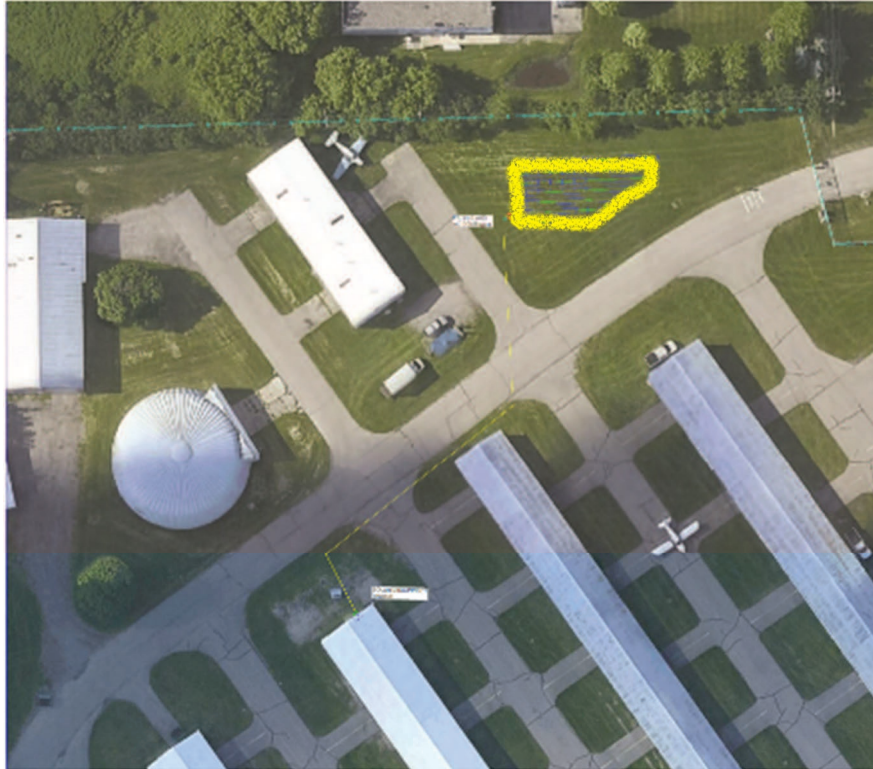


# Airport NE Hangars

## SYSTEM DETAILS:

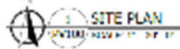
Site	Ann Arbor Municipal Airport - Northeast Hangars
Type	Ground Mount
Size (design kWdc)	32
Cost	\$93,962
Energy (kWh)	39,340
Yield (kWh/kWdc)	1,229.4



MUNICIPAL AIRPORT  
715 AIRPORT DR.  
CITY OF ANN ARBOR, MI  
ESTABLISHED 1916 (AGRICULTURAL AIRWAY)

SYSTEM INFORMATION	
GROUND MOUNT	
TILT ANGLE	27°
DESIGN WIND SPEED	27.74 MPH
AC SYSTEM SIZE	28 MWAC
PHOTOVOLTAIC AREA	18,000
NUMBER OF PANELS	36,000
MODULE QUANTITY	72
WATER VOLUME	10,000
WATER TYPE	DEIONIZED
WATER PURIFICATION	RO
WATER REUSE	NO
WATER REUSE TYPE	FOOD TREATMENT
WATER REUSE VOLUME	10,000

LEGEND	
1	PROPOSED SOLAR ARRAY
2	PROPOSED WATER TREATMENT PLANT
3	PROPOSED WATER STORAGE TANK
4	PROPOSED WATER DISTRIBUTION NETWORK
5	PROPOSED WATER REUSE NETWORK
6	PROPOSED WATER REUSE NETWORK
7	PROPOSED WATER REUSE NETWORK
8	PROPOSED WATER REUSE NETWORK
9	PROPOSED WATER REUSE NETWORK
10	PROPOSED WATER REUSE NETWORK

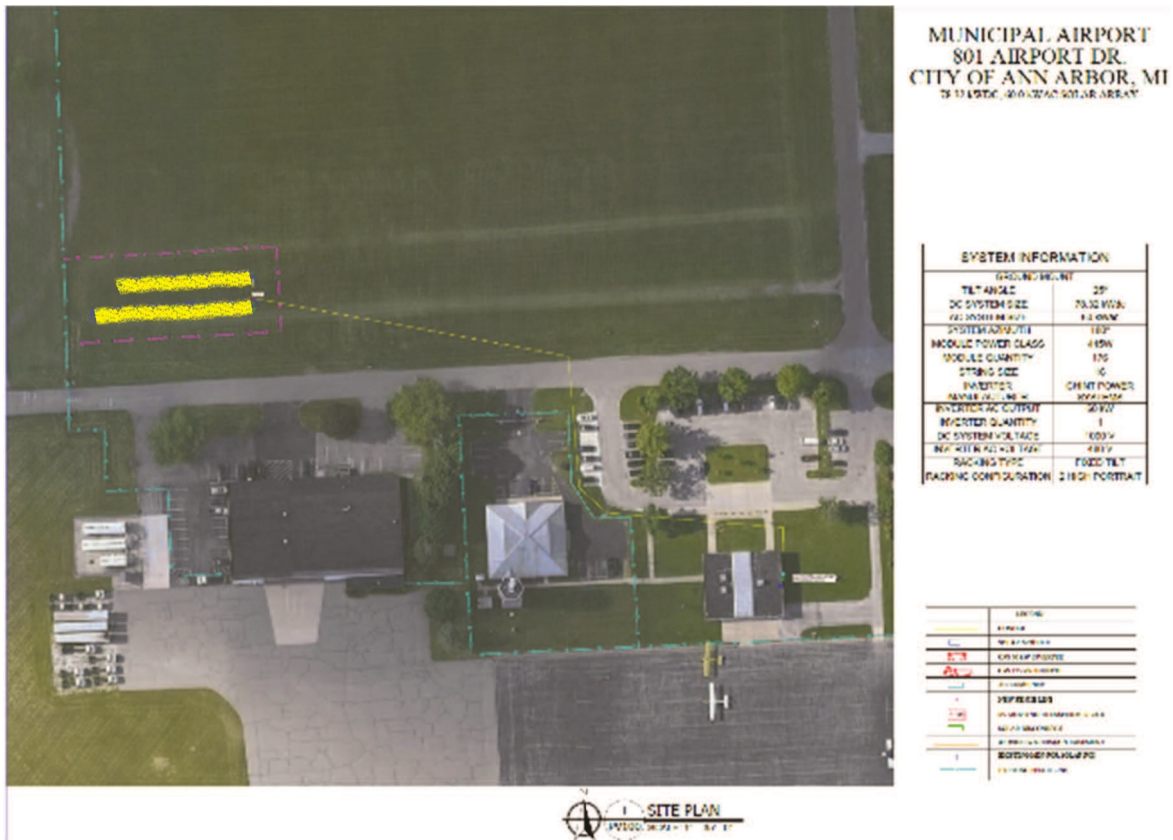


# Airport Admin Building

## SYSTEM DETAILS:

Site	Ann Arbor Municipal Airport - Admin Building
Type	Ground Mount
Size (design kWdc)	78
Cost	\$229,684
Energy (kWh)	100,864
Yield (kWh/kWdc)	1,293.1

## SYSTEM DESIGN:



# Airport NW Hangers

## SYSTEM DETAILS:

Site	Ann Arbor Municipal Airport - Northwest Hangars
Type	Ground Mount
Size (design kWdc)	71
Cost	\$208,804
Energy (kWh)	87,997
Yield (kWh/kWdc)	1,239.4



# Airport Steere Farm

## SYSTEM DETAILS:

Site	Ann Arbor Municipal Airport - Steere Farm (WTP Pumps)
Type	Ground Mount
Size (design kWdc)	605
Cost	\$1,774,833
Energy (kWh)	776,262
Yield (kWh/kWdc)	1,283.1

