

EXHIBIT A

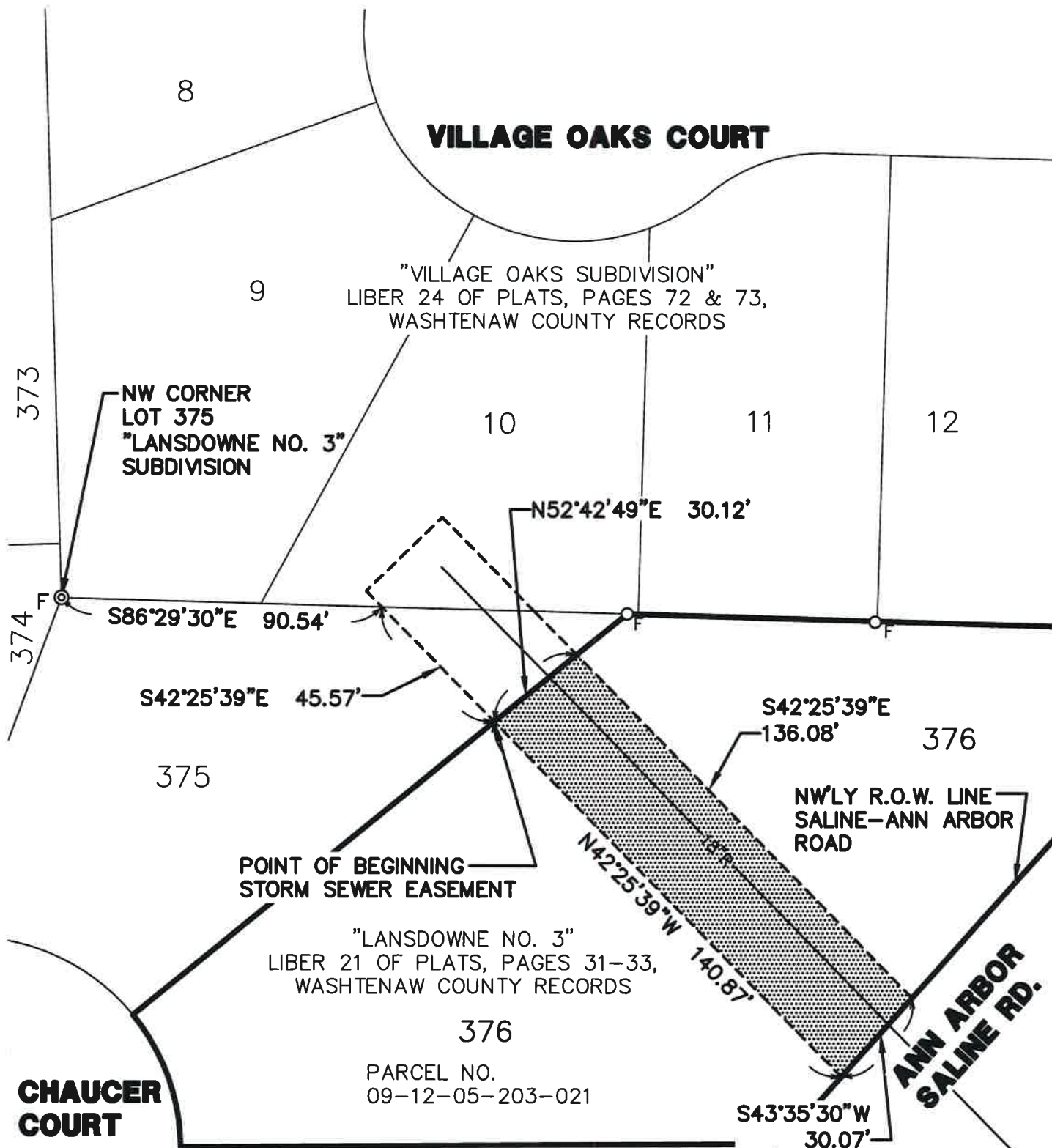
SURVEY OF A STORM SEWER EASEMENT LOCATED IN
THE NW 1/4 OF SECTION 5, T3S, R6E,
CITY OF ANN ARBOR, WASHTENAW COUNTY, MICHIGAN




BEARINGS BASED ON "LANSLOWNE NO. 3",
AS RECORDED IN LIBER 21 OF PLATS, PAGES 31-33,
WASHTENAW COUNTY RECORDS.

LEGEND

- F FOUND IRON ROD
- F FOUND MONUMENT



14094_ESMT-3.DWG

CLIENT: CITY OF ANN ARBOR	DATE: 8/26/16
JOB NO.: 14094	SHEET 1 OF 2
SECTION: 5 TWN: 3S. RANGE: 6E.	SCALE: 1in.= 40 ft.
CITY OF ANN ARBOR	BOOK: 450
WASHTENAW COUNTY, MICHIGAN	BY: KMW
 M I D W E S T E R N C O N S U L T I N G <small>3815 Plaza Drive Ann Arbor, Michigan 48108 (734) 995-0200 • www.midwesternconsulting.com Land Development • Land Survey • Institutional • Municipal Wireless Communications • Transportation • Landfill Services</small>	