

EXISTING



Galaxy S24 Ultra

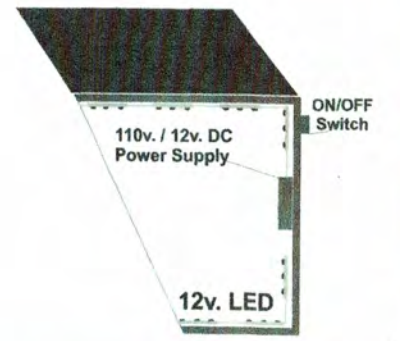
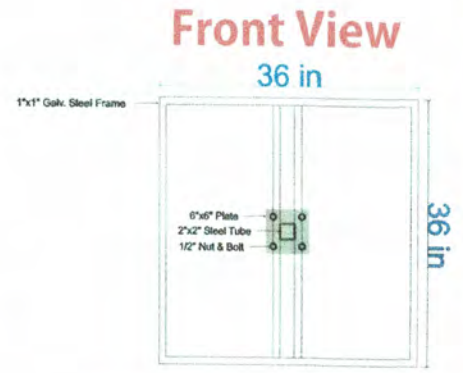
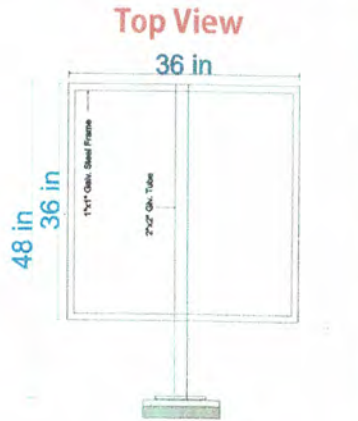
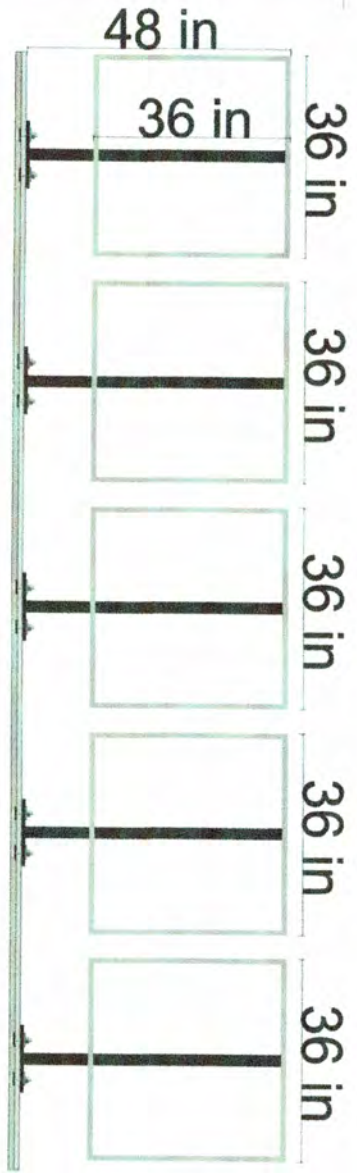
PROPOSED



NEW THREE SIDED CUSTOM DIMENSIONAL PROJECTING SIGN WITH FACE LIT CUBES. "NECTO" SIGN IS INSTALLED ON (5) INTERNAL STEEL MAST ARMS ON A STEEL WALL PLATE. (3) 4" DEEP 14" TALL ALUMINUM CANOPY AWNINGS WITH EITHER APPLIED VINYL NON-ILLUMINATED GRAPHICS OR LIGHTED FACES WITH LOW PROFILE LED LIT CABINETS WITH CHANGEABLE FACES.

SIGN WILL REQUIRE (1) 20w 120v DEDICATED CIRCUIT (BY OTHERS)

CANOPIES (IF ILLUMINATED) WILL EACH REQUIRE (1) 20w 120v DEDICATED CIRCUIT (BY OTHERS)



Sign Specs:

- 5 Galvanized Steel Cube Frame
- 3/16" Lexan Faces / 3 Sides
- Non Lit Top/Bottom/Back
- Internally LIT using 12v. UL approved LED modules
- UL Approved Power Supply
- UL Approved ON/OFF Switch
- Raceway behind steel plate to hold all wiring

Job Name: NECTO

**Job Location: 516 E Liberty St
Ann Arbor MI 48104**

"This Sign is intended to be installed in accordance with the requirements of Article 600 of the National Electrical Code and/or other applicable local codes. This includes proper grounding and bonding of the sign".

PLEASE REVIEW THOROUGHLY: Your approval of this proof marks your acceptance that this art is correct and approval is given to send this art for production. The client is responsible for any changes, edits or corrections of this proof. Please double check spelling, grammar, content, and for any errors. Any changes made after the approval can be made at customer's cost. Take special note of names, phone numbers, and addresses to ensure their accuracy.

This Product Complies with **UL48** & Bears the mark

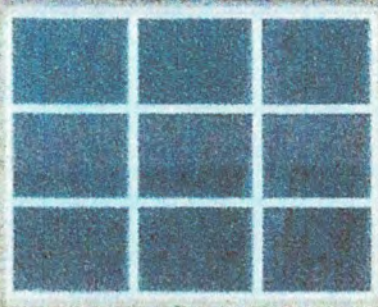


Chalou Designs
"National Award Winning Signage"
Mark Chalou
- Owner -

3-0
N
E
C
T
O

PROPOSED

16'-7"



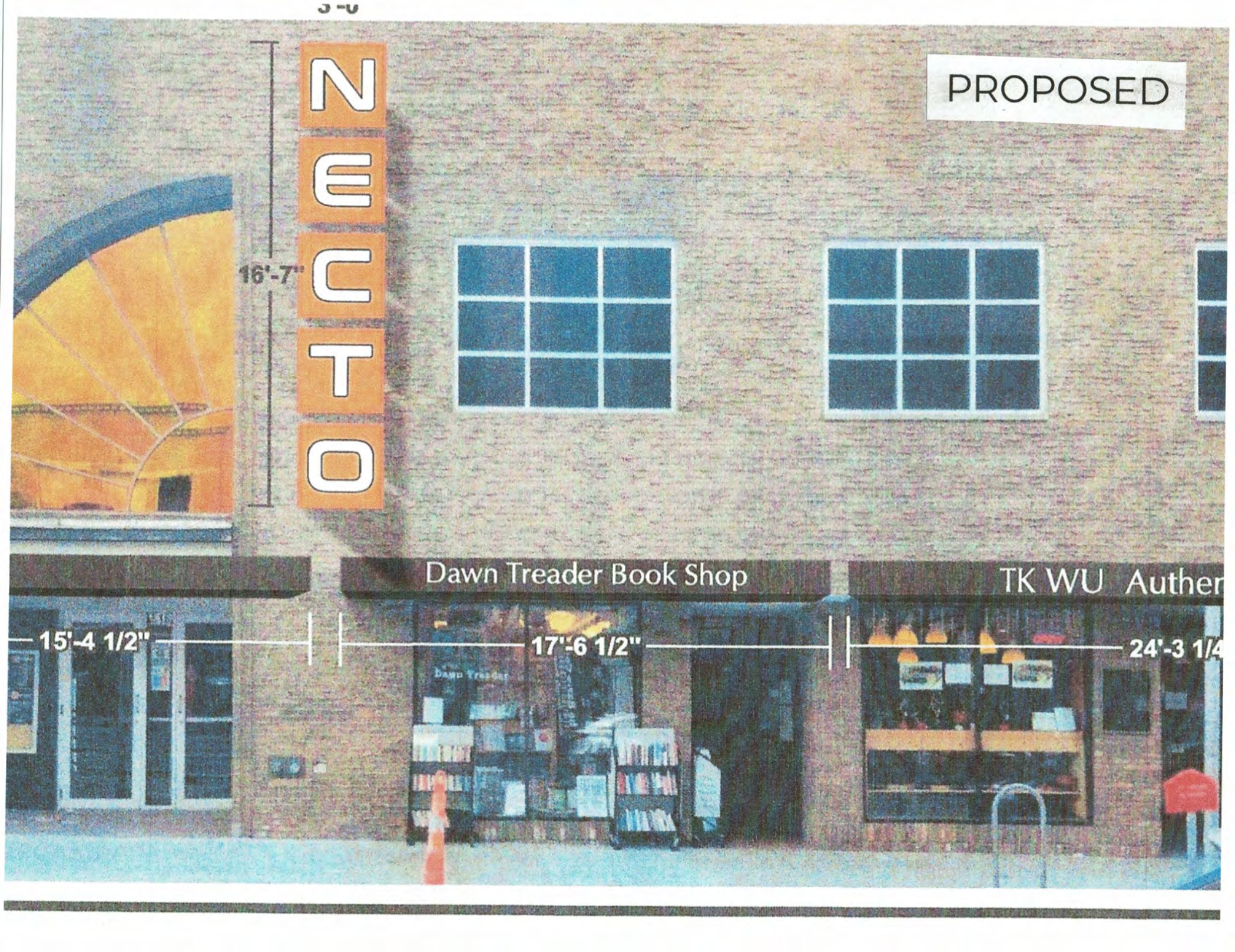
Dawn Treader Book Shop

TK WU Auther

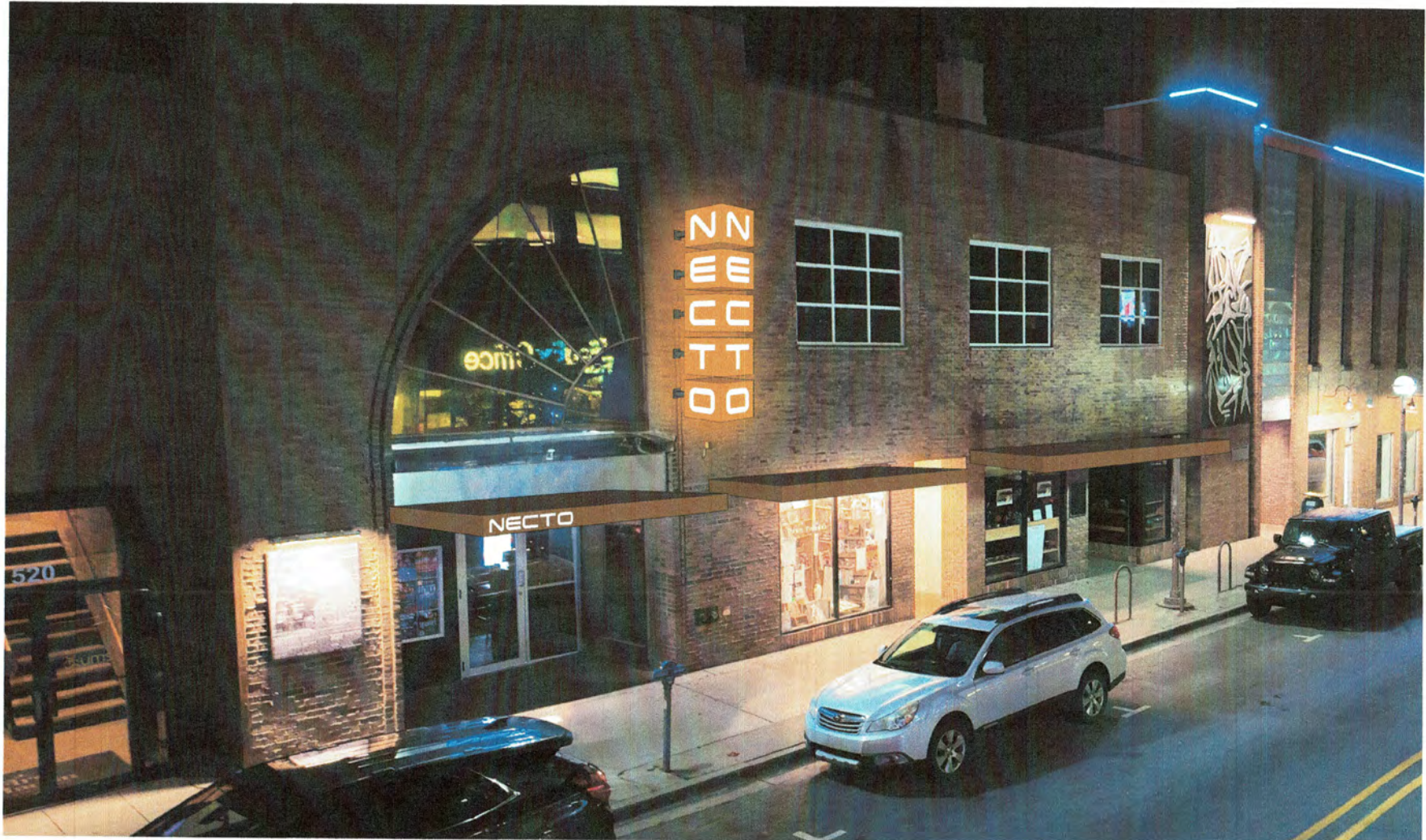
15'-4 1/2"

17'-6 1/2"

24'-3 1/4"



PROPOSED



PROPOSED



PROPOSED



PROPOSED



PROPOSED



SIGN PROPORTIONS ARE NOT TO SCALE

PROPOSED



SIGN PROPORTIONS ARE NOT TO SCALE

We are requesting a variance to erect a non-conforming sign for the NECTO located at 516 E Liberty in the entertainment center of downtown. The proposed letters for the NECTO design are presented as 36" cubes illuminated internally on three sides...front, left, and right.

Currently, the A2 ordinance indicates we are restricted to 24" cubes in keeping with the square footage allotment permitted.

The requested variance is a critical piece of an exciting new plan for Liberty Street, meant to illuminate the block, and in doing so, showcase the street's many restaurants, theaters, and shops and other businesses.

The NECTO has the longest running club night in Ann Arbor, having first opened its doors 50 years ago making it part of our city's proud past, present, and future gaze! The NECTO also celebrates the spirit and creativity of our local and regional LGBTQ+ community with one of the nations longest running Pride nights 40 years and running.

The proposed sign made possible by approval of this variance request will join the iconic State Theater, newly upgraded Michigan theater and soon to be unveiled historic Pinball Pete's Arcade sign (also over 40 years in business), creating an inspiring new cultural corridor along Liberty Street.

In the aftermath of COVID and its emotional and economic impact on our community, businesses, and citizens, and in this time of political uncertainty and division, this offers the unique opportunity to highlight our resilience and hopefulness moving forward. Light brings us together. It reminds us of possibilities. It reminds us to look up. Neon signs and marquees like the NECTO and the State, brightly lit in big cities and small towns across the country, in our town, are the art of the People. They inspire us, and serve as a symbol of enlightenment and the power of our imaginations.

We are asking today for approval of this variance in support of of this visionary plan.