

Exhibit A

PARENT PARCEL DESCRIPTION

Glazier Hill Nature Area, also known as Glazier Hill Park, The Woodlands, as recorded in Liber 25 of Plats, pages 10, 11, and 12, Washtenaw County Records, subject to easements and restrictions of record.

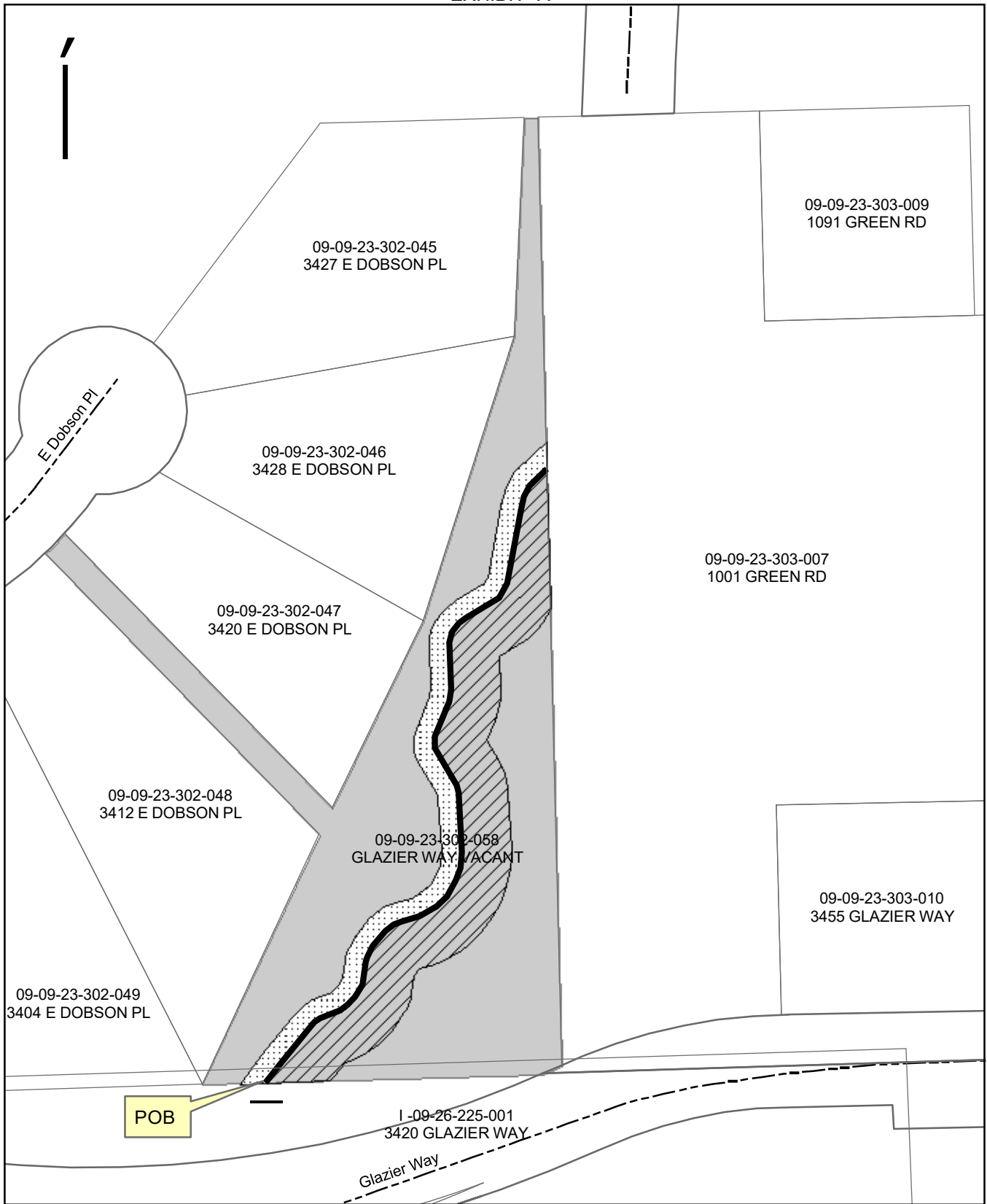
PERMANENT DRAIN EASEMENT AREA

Situated in the City of Ann Arbor, Washtenaw County, Michigan

A permanent easement 15 feet to the west of and 35 feet east of the centerline of the Millers Creek Ann Arbor Drain described as follows:

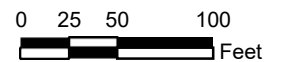
Commencing at the Southwest Corner of Section 23, T2S, R6E, City of Ann Arbor, Washtenaw County, Michigan, thence N 88° 31' 22" E 1860.935 feet; Thence N 88° 13' 7" E 45.432 feet to the center of the Millers Creek Ann Arbor Drain for a PLACE OF BEGINNING; Thence along the centerline of drain N 38° 15' 14" E 19.771 feet; Thence N 38° 33' 56" E 14.385 feet; Thence N 38° 47' 35" E 15.406 feet; Thence N 43° 23' 30" E 5.752 feet; Thence N 55° 14' 41" E 4.533 feet; Thence N 68° 17' 8" E 9.244 feet; Thence N 68° 57' 47" E 6.351 feet; Thence N 51° 50' 37" E 6.765 feet; Thence N 42° 59' 52" E 7.69 feet; Thence N 31° 51' 57" E 9.933 feet; Thence N 8° 18' 49" E 16.82 feet; Thence N 15° 35' 24" E 3.393 feet; Thence N 28° 18' 2" E 8.977 feet; Thence N 39° 50' 49" E 13.759 feet; Thence N 51° 41' 7" E 7.846 feet; Thence N 71° 34' 2" E 5.527 feet; Thence N 72° 45' 30" E 13.846 feet; Thence N 60° 3' 33" E 13.857 feet; Thence N 45° 36' 14" E 10.211 feet; Thence N 28° 55' 34" E 13.198 feet; Thence N 20° 40' 1" E 9.26 feet; Thence N 6° 7' 43" E 11.389 feet; Thence N 3° 16' 15" W 42.628 feet; Thence N 15° 49' 54" W 5.293 feet; Thence N 30° 17' 11" W 30.892 feet; Thence N 1° 0' 48" E 8.589 feet; Thence N 22° 14' 56" E 26.844 feet; Thence N 9° 45' 9" E 5.346 feet; Thence N 9° 45' 23" E 3.394 feet; Thence N 2° 35' 48" W 33.55 feet; Thence N 16° 51' 29" E 7.861 feet; Thence N 37° 11' 59" E 7.919 feet; Thence N 52° 51' 10" E 6.293 feet; Thence N 59° 2' 11" E 27.475 feet; Thence N 29° 20' 19" E 11.944 feet; Thence N 10° 36' 0" E 37.046 feet; Thence N 10° 35' 59" E 17.076 feet; Thence N 13° 34' 15" E 9.069 feet; Thence N 26° 33' 51" E 8.497 feet; Thence N 45° 40' 20" E 17.304 feet to a point along the eastern parcel line of Glazier Hills Park.

DRAIN EASEMENT SKETCH
EXHIBIT "A"



- Point of Beginning
- - - Road Centerline
- Drain Centerline
- ▨ 35 feet
- ⋯ 15 feet

DRAIN EASEMENT
PART OF THE SW 1/4 SECTION 23
T2S, R6E, CITY OF ANN ARBOR, WASHTENAW COUNTY
TAX ID: 09-09-23-302-058



1 inch = 100 feet
DATE: June 25, 2020