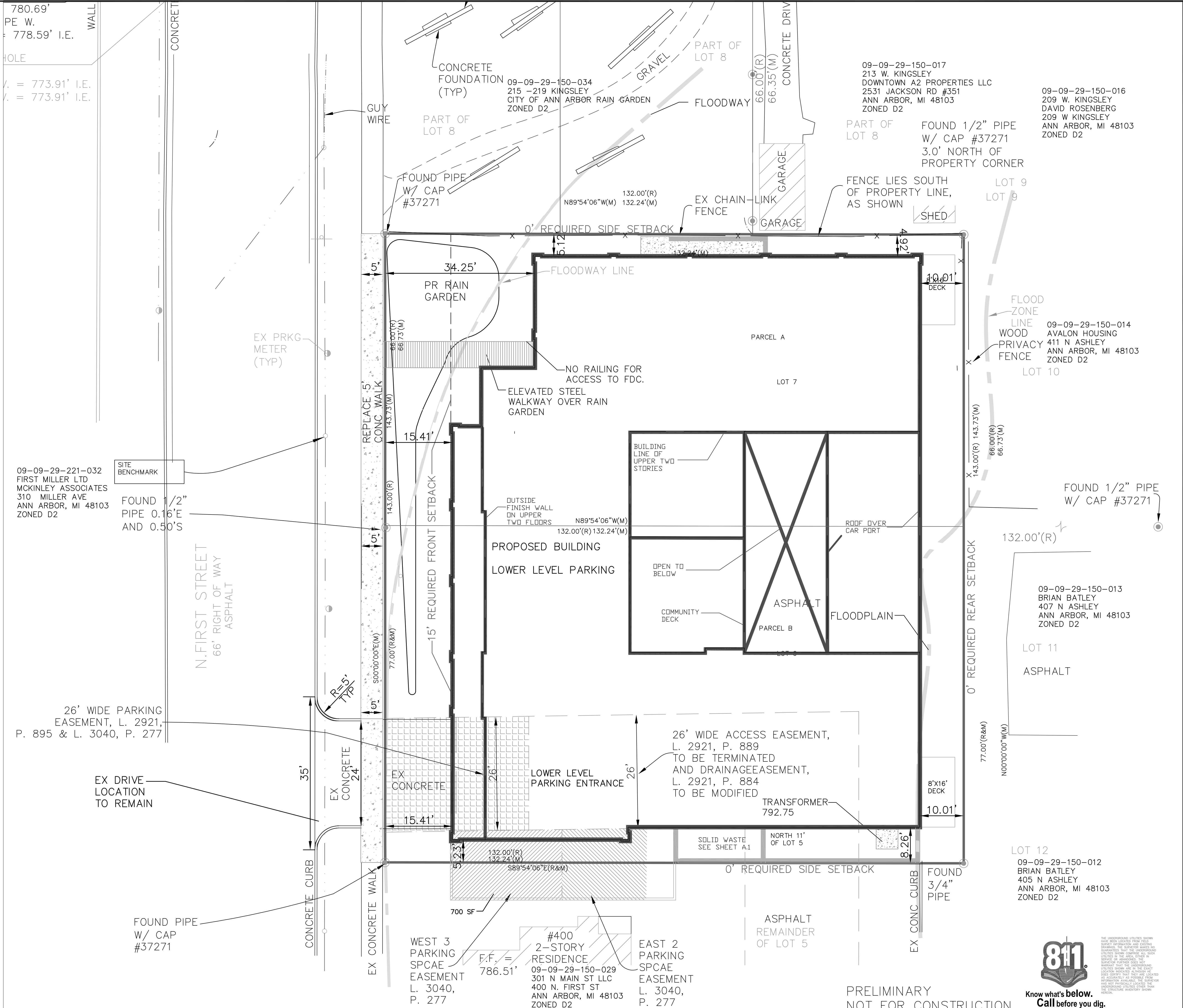


LEGEND

- SET 1/2" REBAR WITH CAP P.S. 47976
- ⊙ FOUND MONUMENT (AS NOTED)
- (R&M) RECORD AND MEASURED DIMENSION
- (R) RECORD DIMENSION
- (M) MEASURED DIMENSION
- ⊙ GROUND POINT
- ⊙ ELECTRIC METER
- ⊙ UTILITY POLE
- ⊙ GAS METER
- ⊙ ROUND CATCH BASIN
- ⊙ WATER VALVE
- ⊙ AIR CONDITIONING UNIT
- ⊙ LIGHTPOST/LAMP POST
- ⊙ PARKING METER
- ⊙ SINGLE POST SIGN
- ⊙ TREE
- PARCEL BOUNDARY LINE
- PLATTED LOT LINE
- EASEMENT (AS NOTED)
- BUILDING
- BUILDING OVERHANG
- CONCRETE CURB
- EDGE OF CONCRETE (CONC.)
- EDGE OF ASPHALT (ASPH.)
- EDGE OF BRICK
- EDGE OF GRAVEL
- FENCE (AS NOTED)
- WALL (AS NOTED)
- OVERHEAD UTILITY LINE
- GAS LINE
- SANITARY LINE
- STORM LINE
- WATER LINE
- CONTOUR MAJOR
- CONTOUR MINOR
- PROP WATER MAIN
- PROP STORM LINE
- PROP SANITARY LINE
- PROP MANHOLE

- NOTES:**
- PER CHAPTER 49, SECTION 4:58 OF THE CITY CODE, ALL SIDEWALKS ARE TO BE KEPT AND MAINTAINED IN GOOD REPAIR BY THE OWNER OF THE LAND ADJACENT TO AND ABUTTING THE SAME. PRIOR TO THE ISSUANCE OF THE FINAL CERTIFICATE OF OCCUPANCY FOR THIS SITE, ALL EXISTING SIDEWALKS IN NEED OF REPAIR MUST BE REPAIRED IN ACCORDANCE WITH CITY STANDARDS.
 - SEE SHEET A-1.0 FOR MECHANICAL EQUIPMENT LAYOUT.
 - SEE SHEET A-1.0 FOR DETAILED LAYOUT OF BICYCLE PARKING, ELEVATOR ACCESS, VEHICULAR PARKING AND TRASH STORAGE.
 - NO PART OF THE ELEVATED STEEL WALKWAY INCLUDING THE HANDRAILS SHALL BE LOCATED WITHIN THE RIGHT-OF-WAY.



PERIMETER ENGINEERING LLC
11245 BOYCE ROAD
CHELSEA, MI 48118
734-216-9941

PERIMETER

Notice: The contractor is the sole responsibility of the contractor. The engineer shall be responsible for the design of any structures, or of any other persons.

SECTION 29
TOWN 2 NORTH, RANGE 2 EAST
CITY OF ANN ARBOR
WASHTENAW COUNTY

CLIENT: HURON DEVELOPMENT ASSOCIATES LLC
410 FIRST STREET
SITE PLAN LAYOUT

DATE: 4-20-15
3-31-15
11-24-14
SCALE: 1"=10'
DR. K.K. CH. K.K.
SHEET NO. SP-03



Know what's below.
Call before you dig.

PRELIMINARY
NOT FOR CONSTRUCTION