



collective



# LV Collective - Company Intro

- LV Collective ("LV") – headquartered in Austin, TX – is a developer of multifamily and student housing projects across the U.S.
- LV develops, builds and operates best-in-class, institutional quality assets. LV and its professionals have developed and operated assets in over 40+ markets in the U.S.
- LV delivers projects that are experience-rich, and thoughtfully designed with sustainability-oriented features.



# Public Realm Focus

LV Collective (“LV”) creates a vibrant experience with the use of varied materials, landscape and public spaces.



# DAYDREAMER

COFFEE

## Café Open to Residents & the Public

- LV partnered with award-winning barista to deliver café experience nationally.
- Open to residents and the general public.
- Café also partners with local bakeries to provide light snacks.



# Energized Lobby



- Community focused space that fosters interaction.
- Use of greenery to bring life into the space and pull the outside in.
- Smaller work/study areas for privacy along with larger areas meant for conversation and group work.
- Curated furniture package that is handpicked for each unique market and property.

# Coworking and Fitness/Wellness



- The standard LV amenity package includes a weight + cardio gym, yoga studio, spin studio, and saunas.
- These spaces are extensions of the rest of the building, with unique design for each wellness space.

# CHURCH ST DEVELOPMENT

AT UNIVERSITY OF MICHIGAN - ANN ARBOR, MICHIGAN

---

PUD PRE-SUBMITTAL CONFERENCE | 02.23.2023



# TABLE OF CONTENTS

## CONTEXT

- Vicinity Map
- Surrounding Site
- Land use
- Relevant Comparison
- Neighboring Buildings

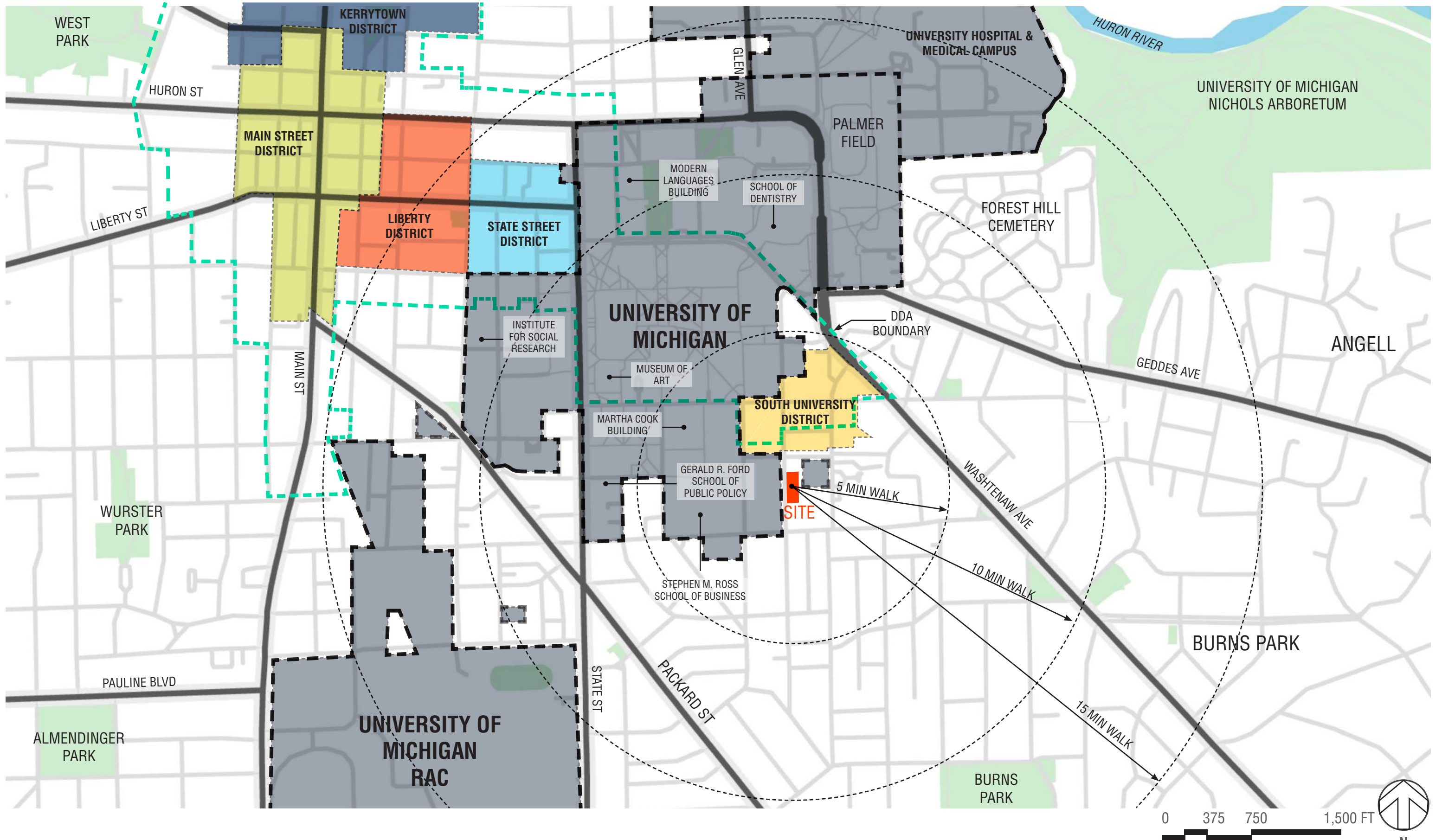
## SITE ANALYSIS

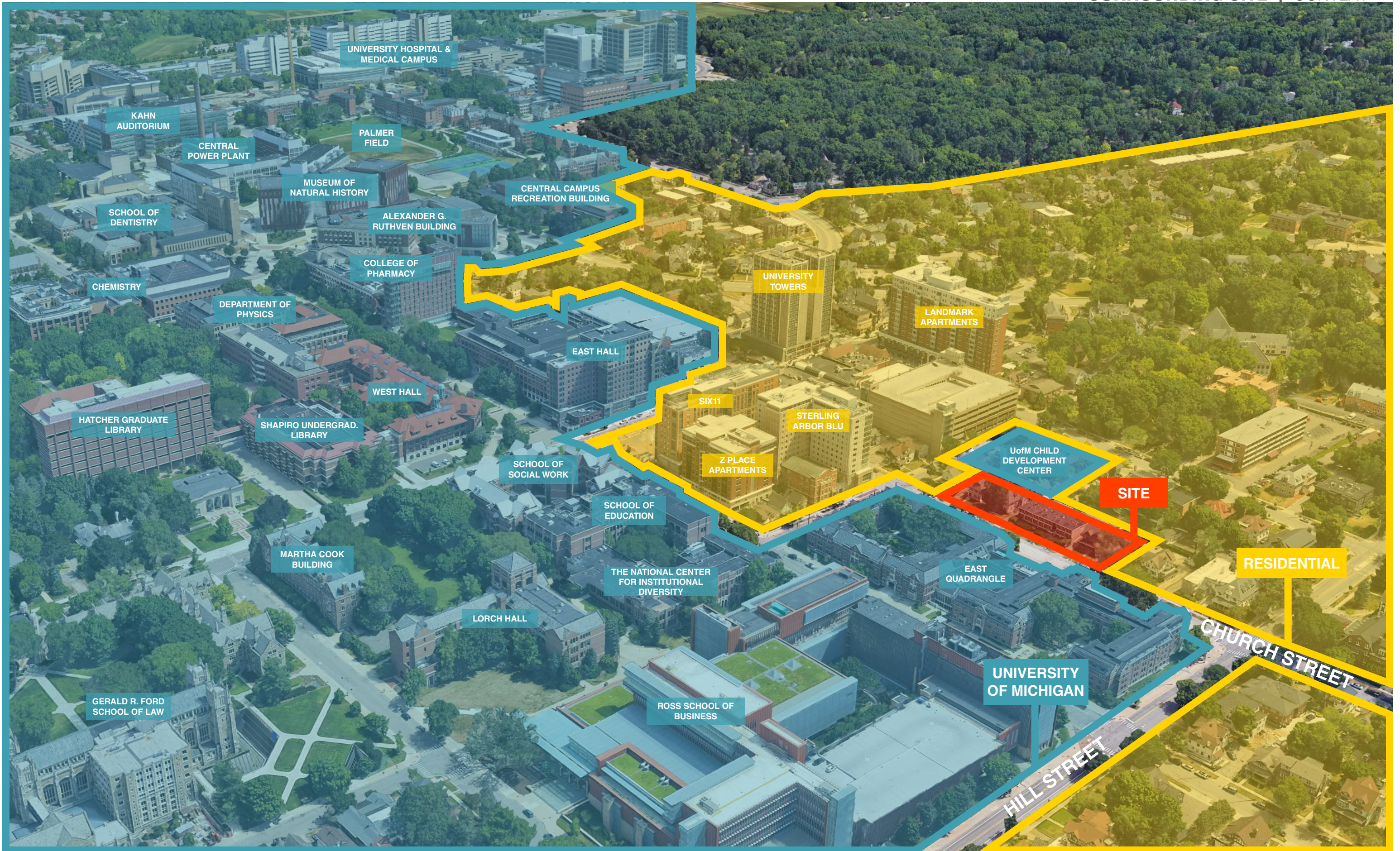
- Street Sections
- Pedestrian Connection
- Vehicular Connection
- Service Connection
- Surrounding Context

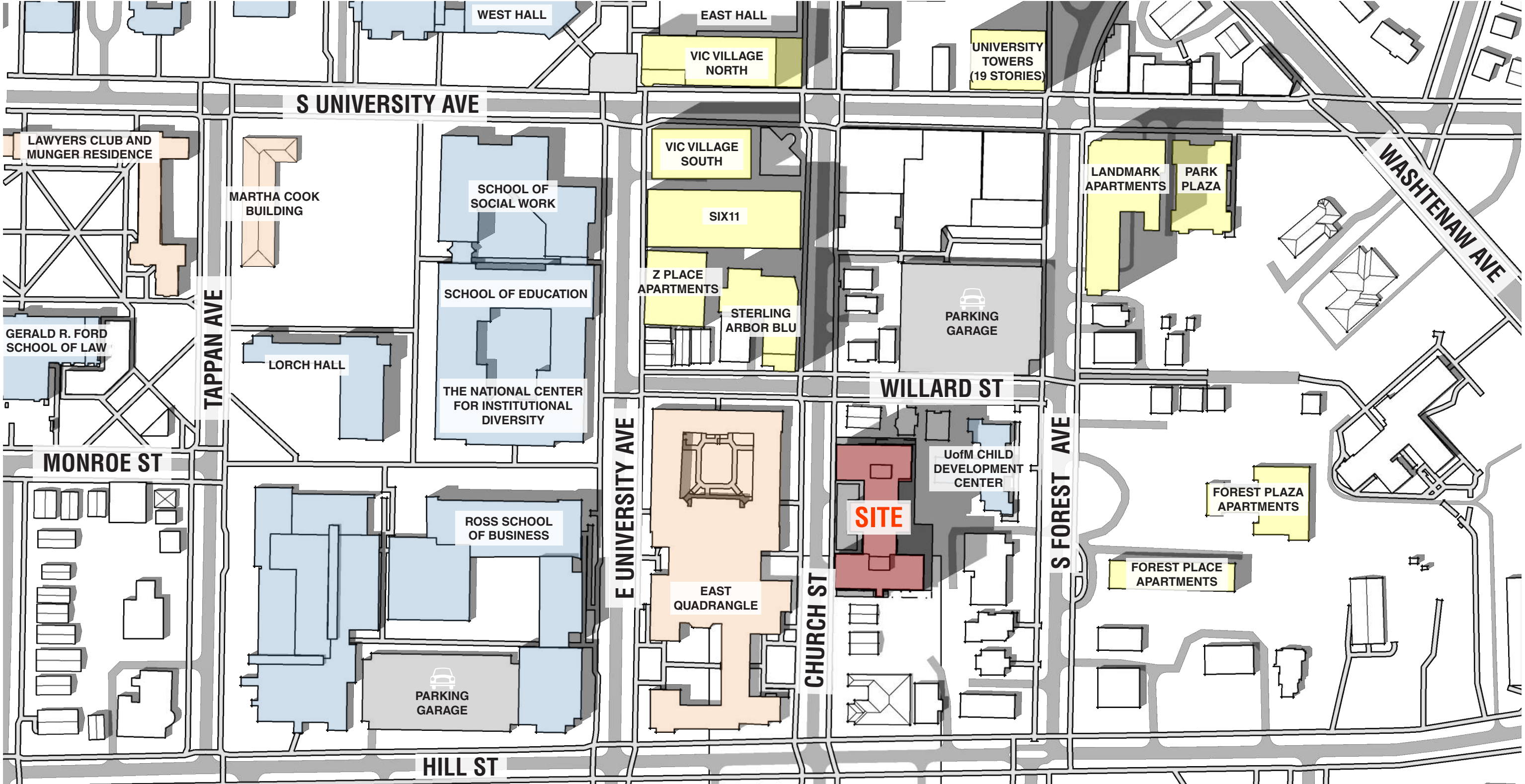
## CONCEPT

- Construction Strategy
- Building Envelope
- Floor Plans
- Building Sections
- Stacking
- Perspectives

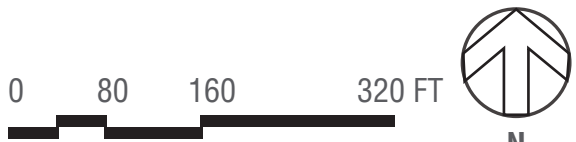


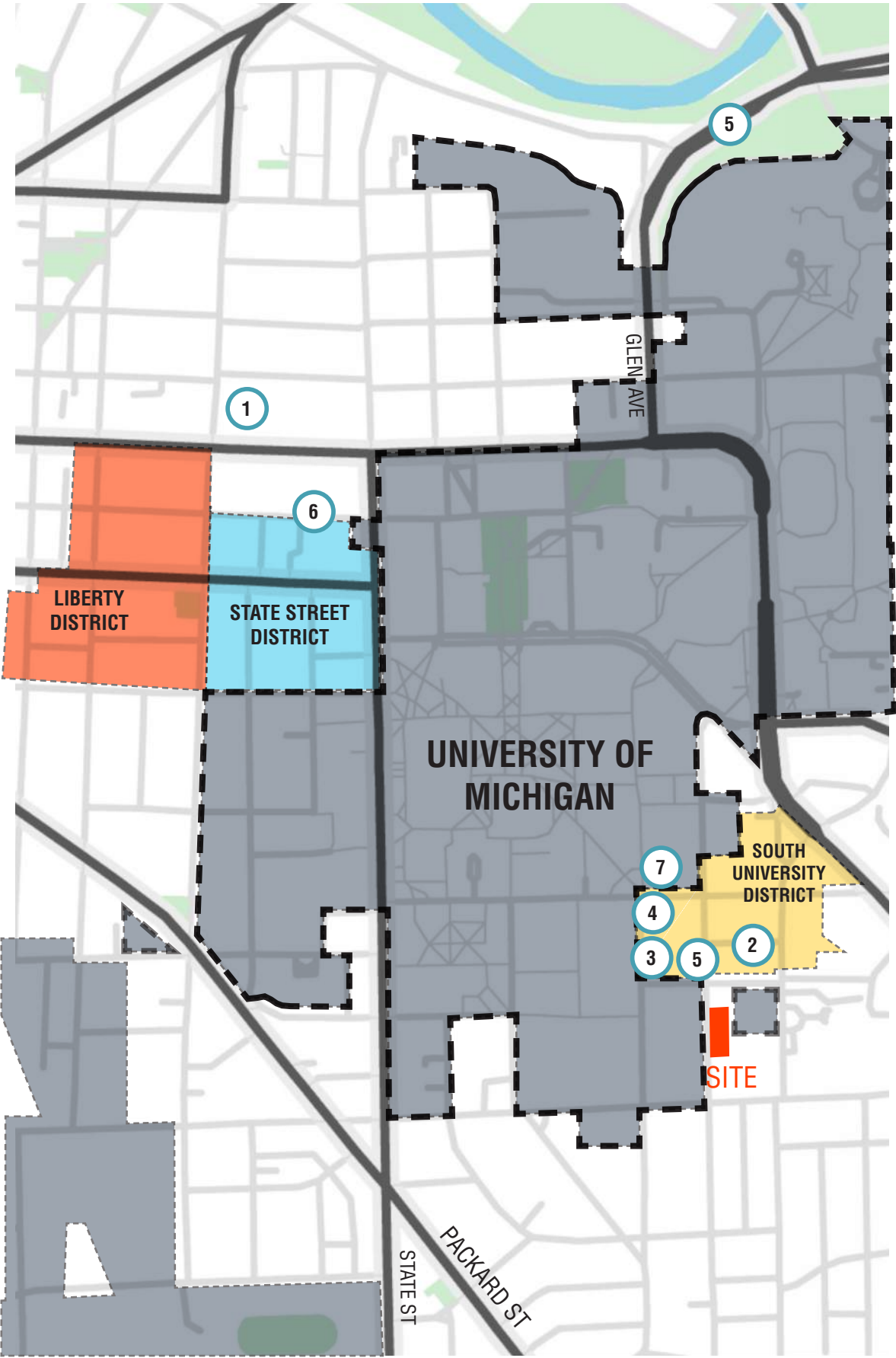






UNIVERSITY BUILDINGS
  UNIVERSITY DORMITORIES
  OFF CAMPUS HOUSING







Z-PL ACE & ARBOR BLU 1



FOREST AVE. PARKING GARAGE 4



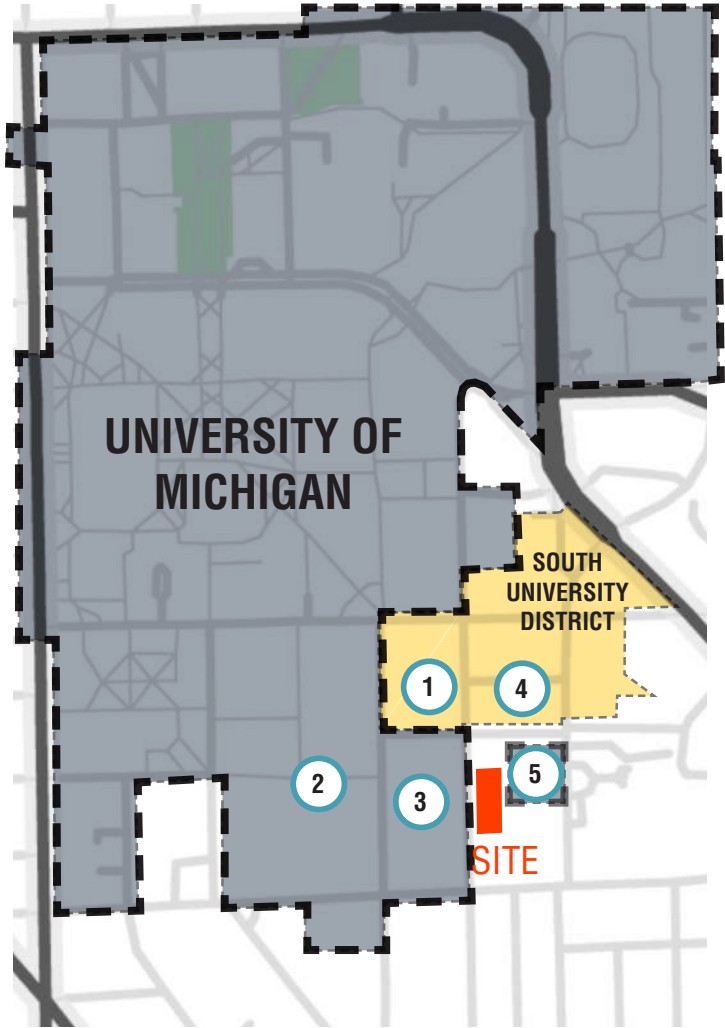
BUSINESS SCHOOL 2

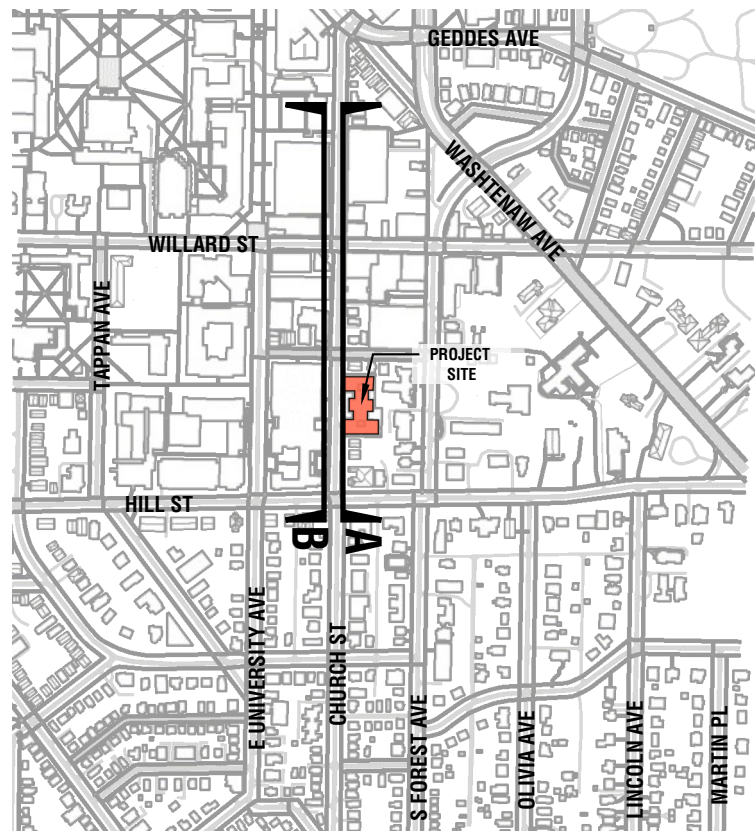


CHILD DEVELOPMENT CENTER 5

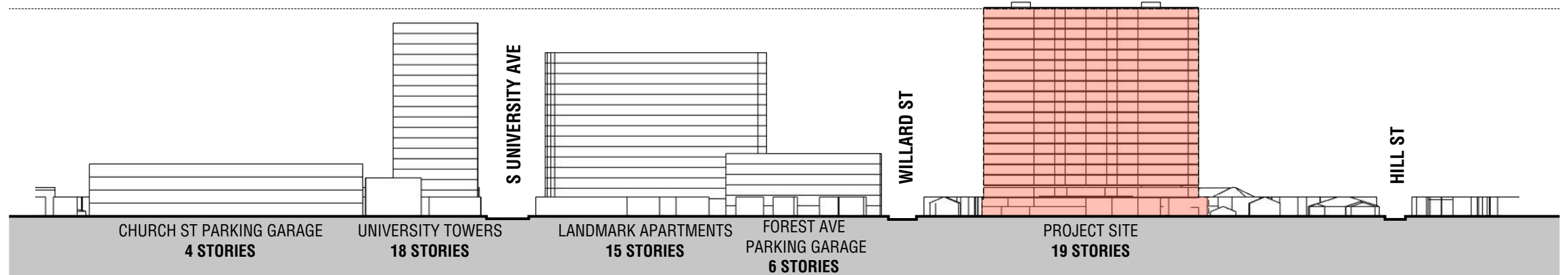


EAST QUAD DORMS 3

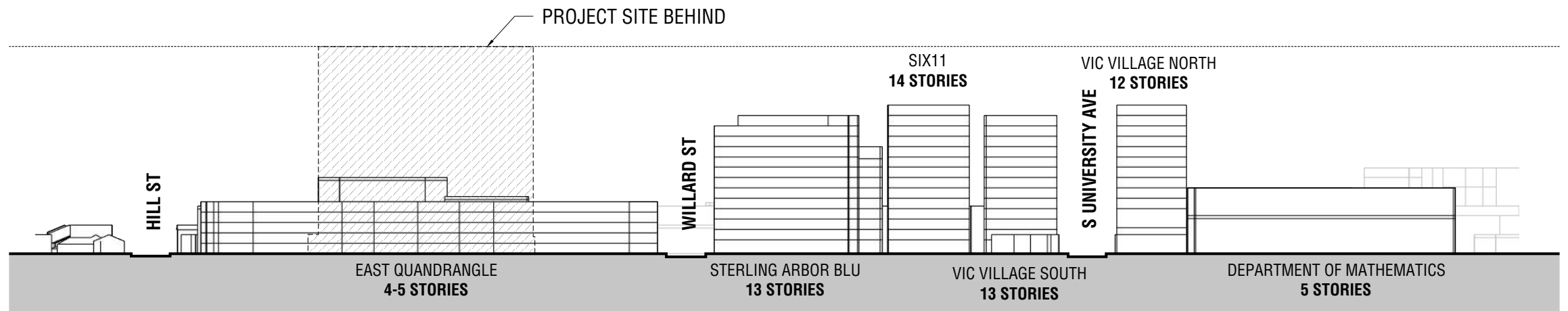




KEY PLAN

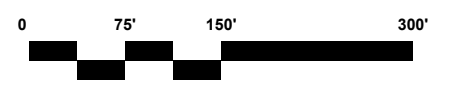
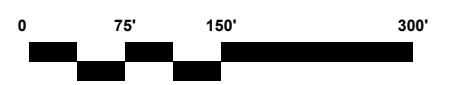
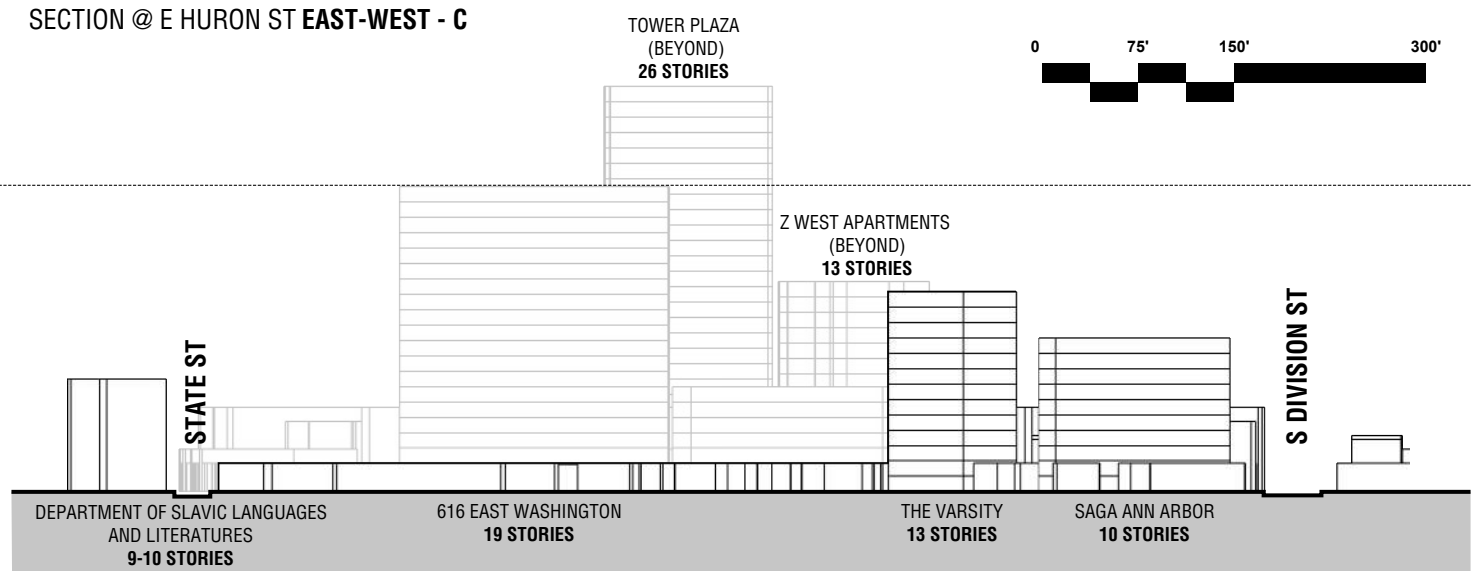
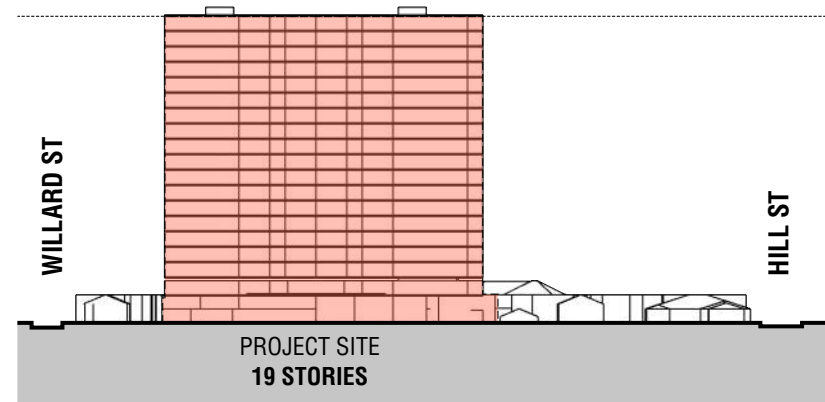
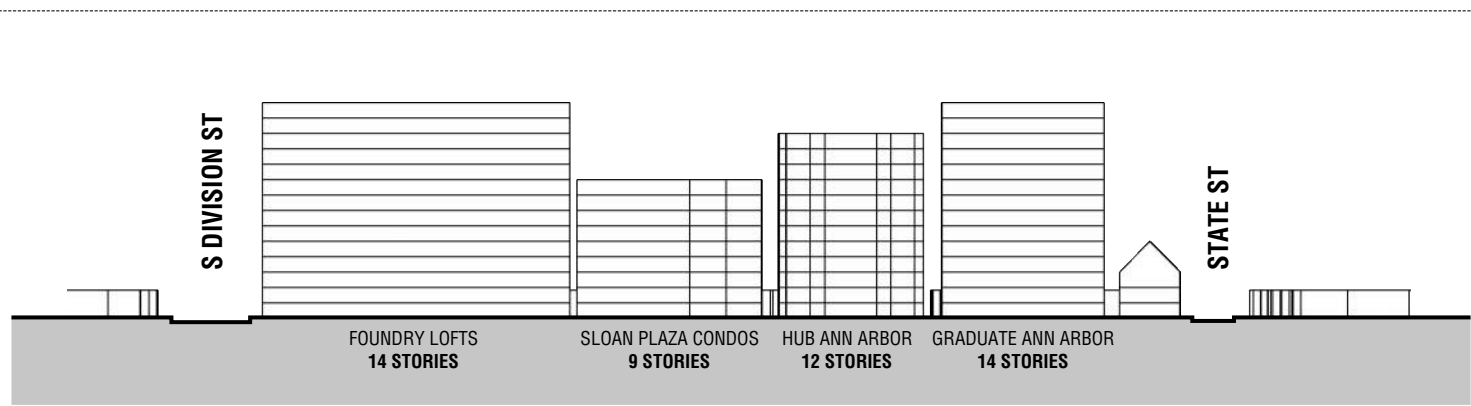
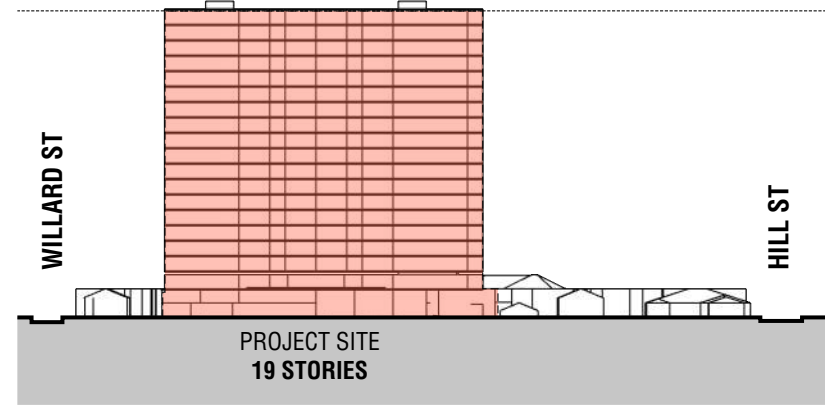
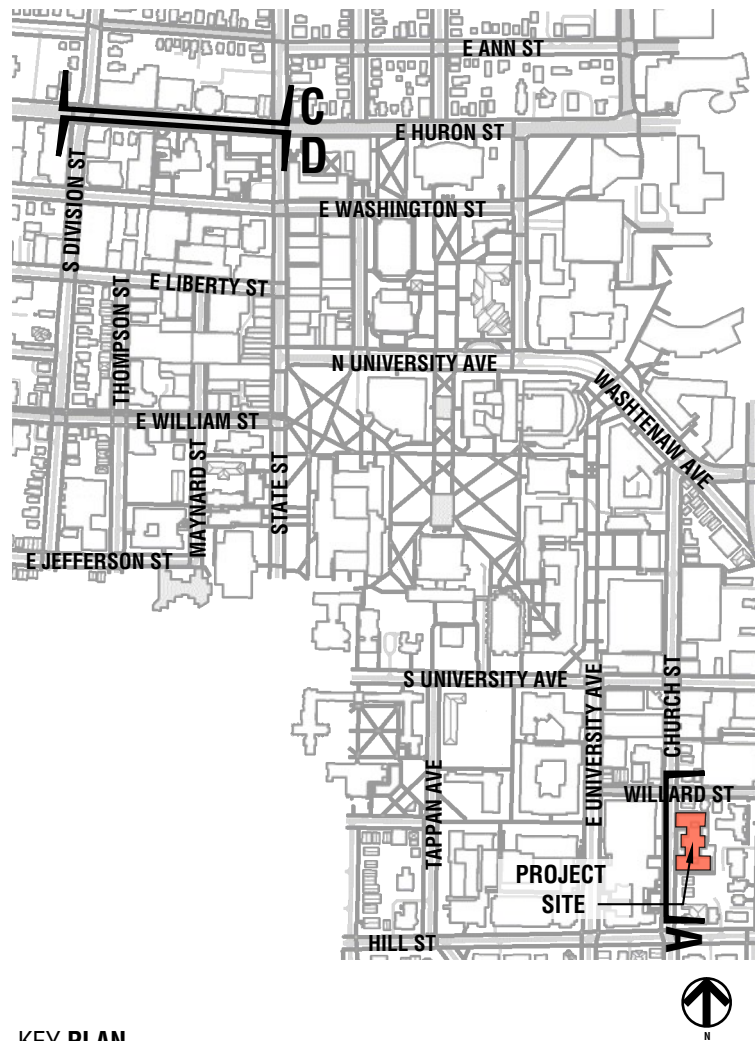


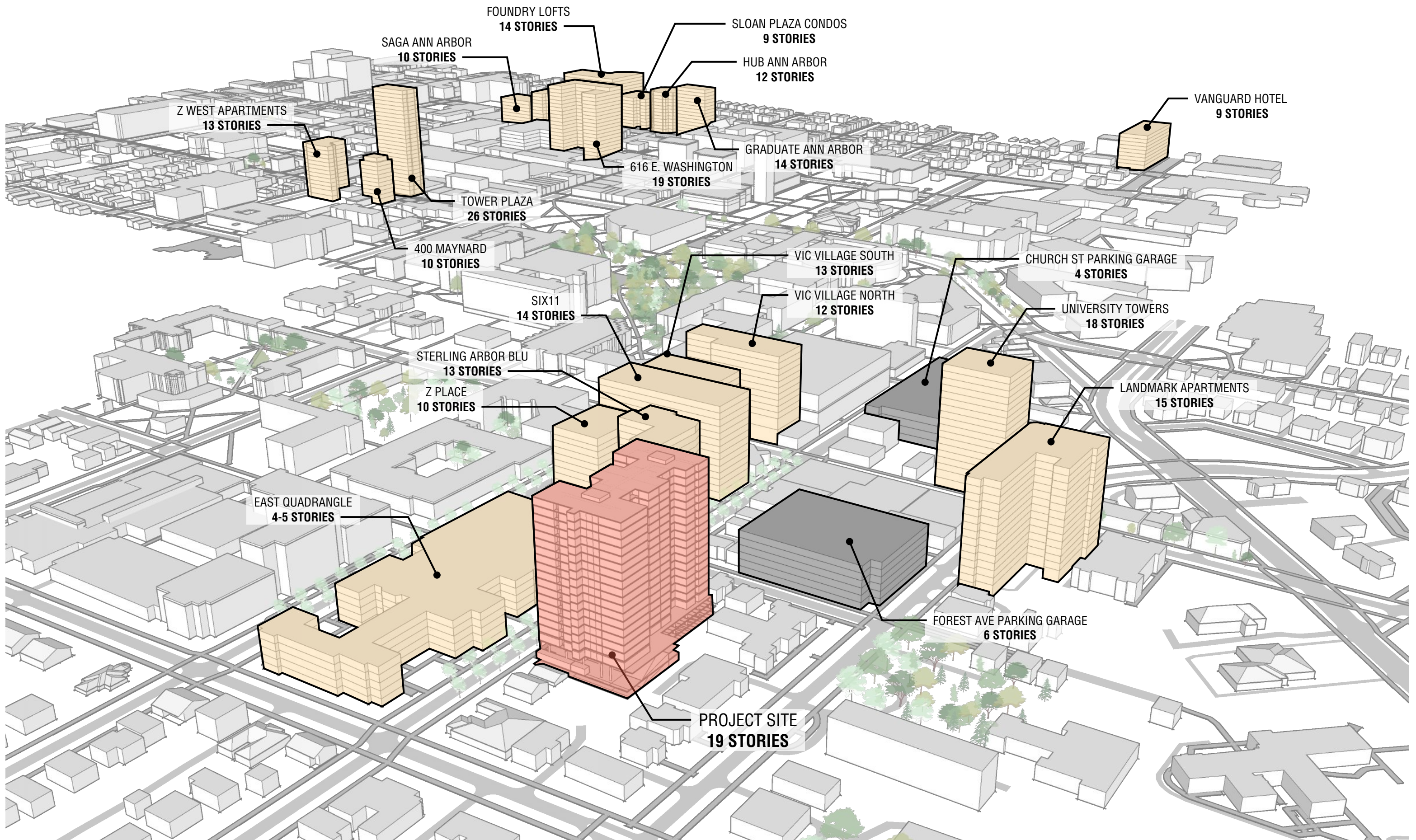
SECTION @ CHURCH ST NORTH-SOUTH - A



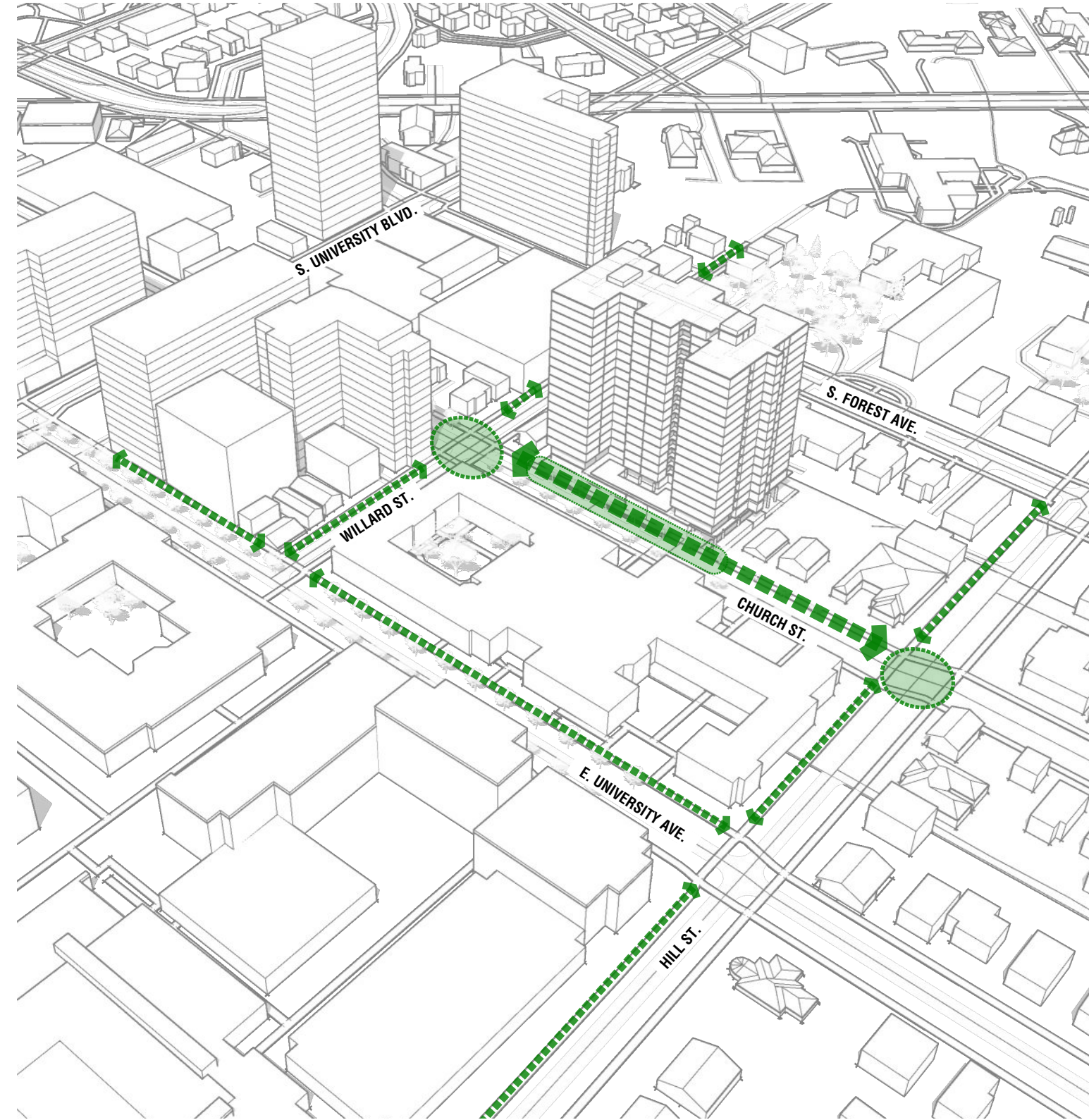
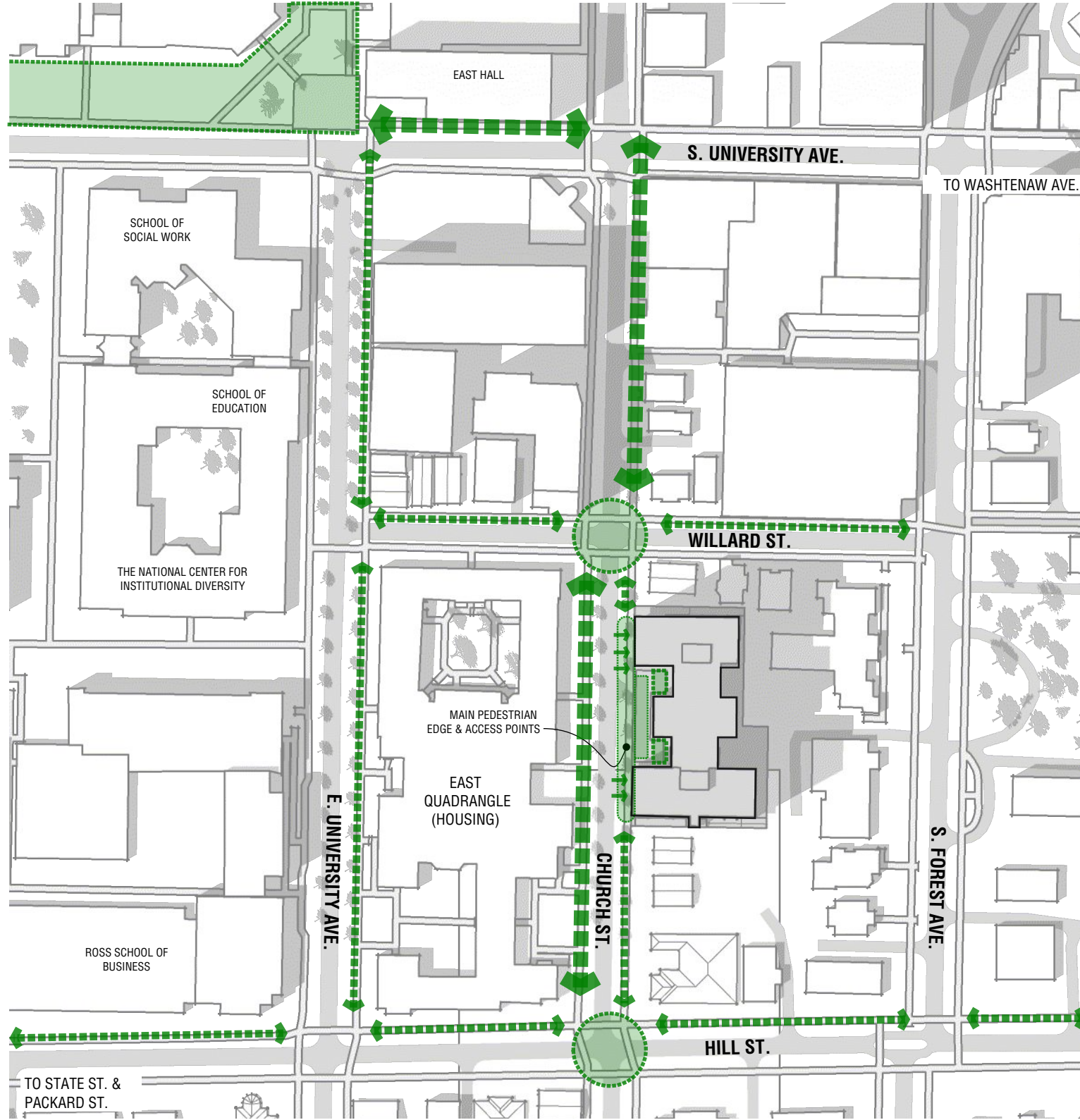
SECTION @ CHURCH ST NORTH-SOUTH - B

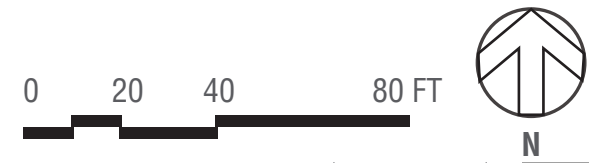
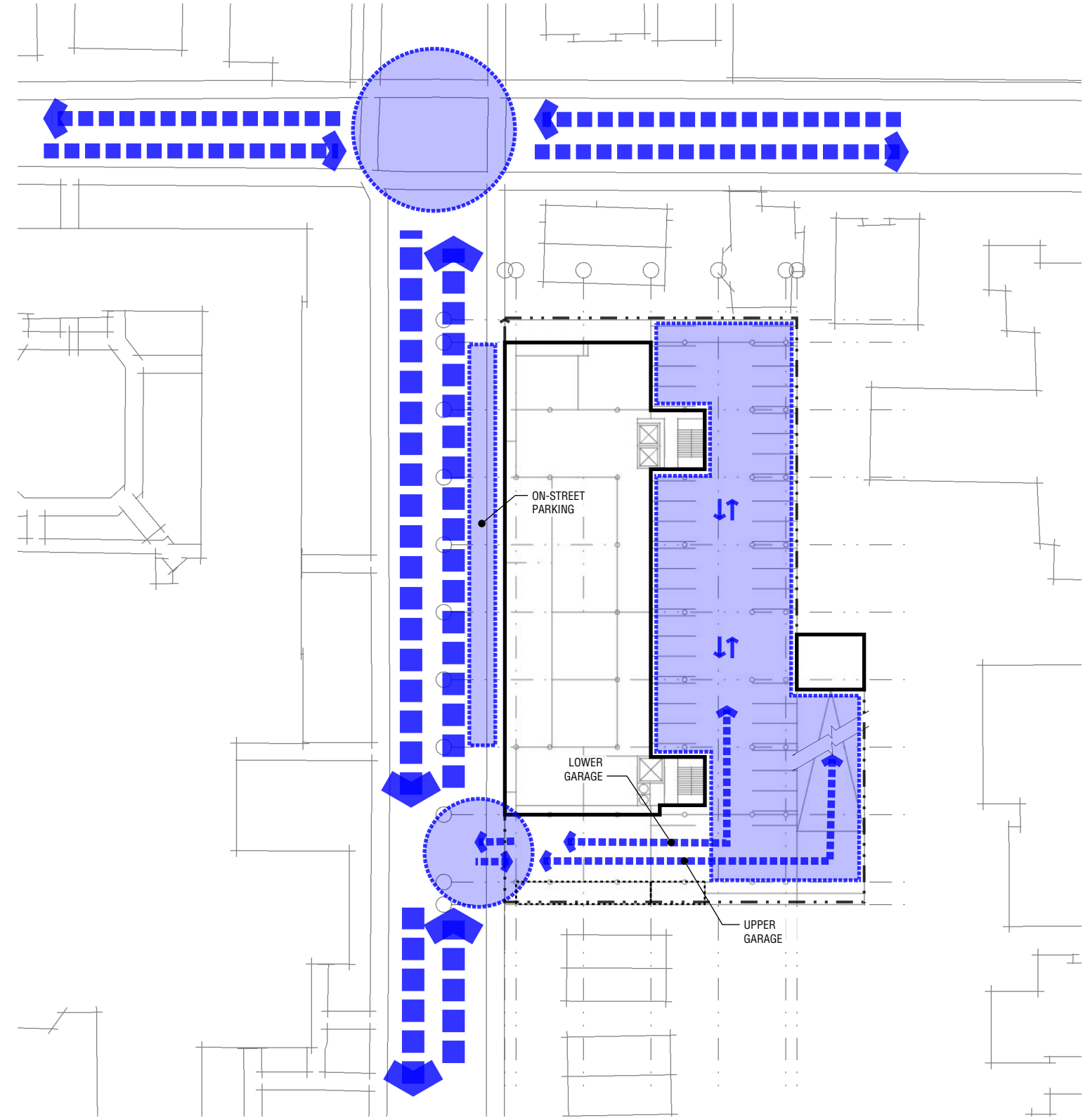
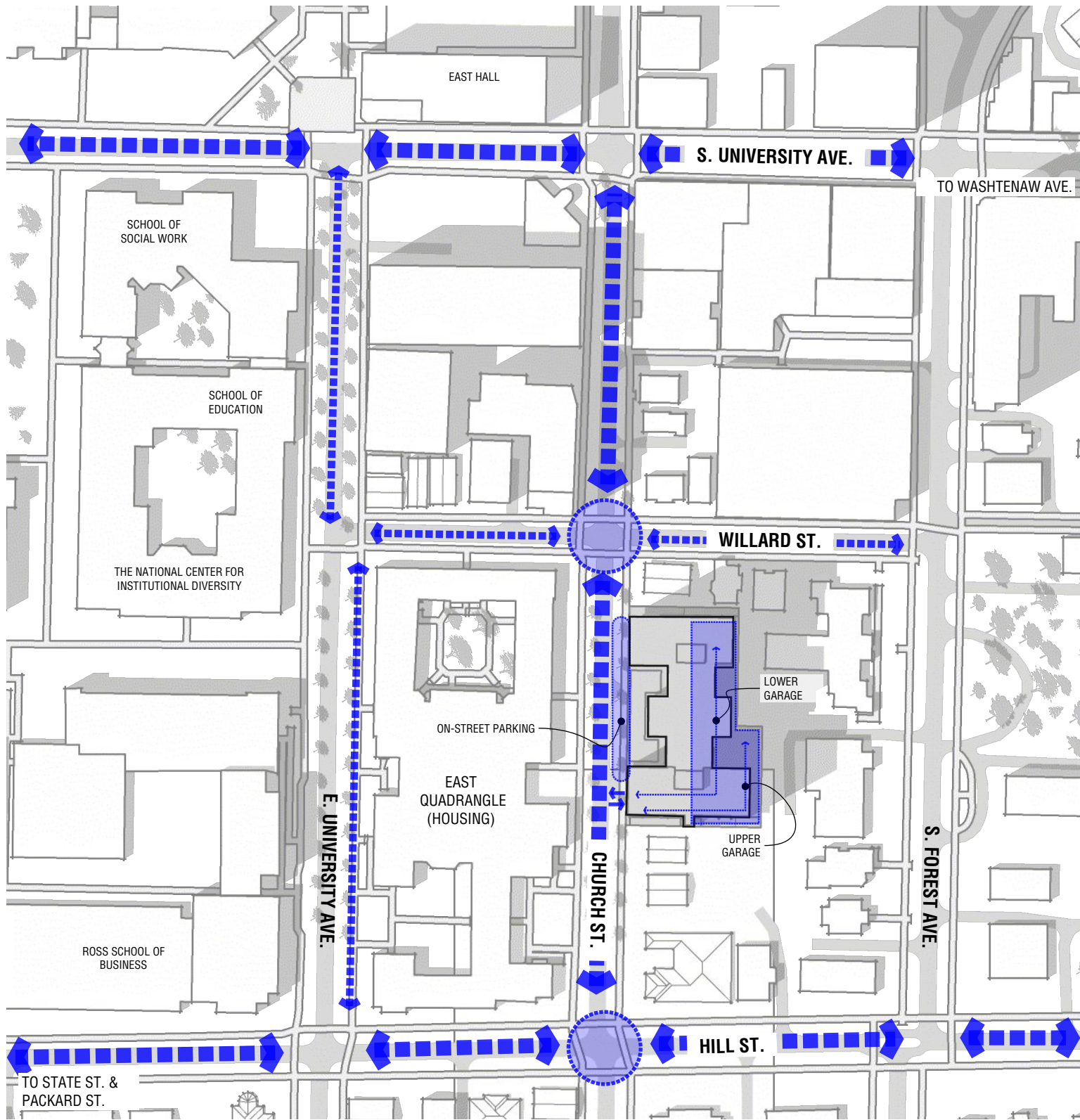


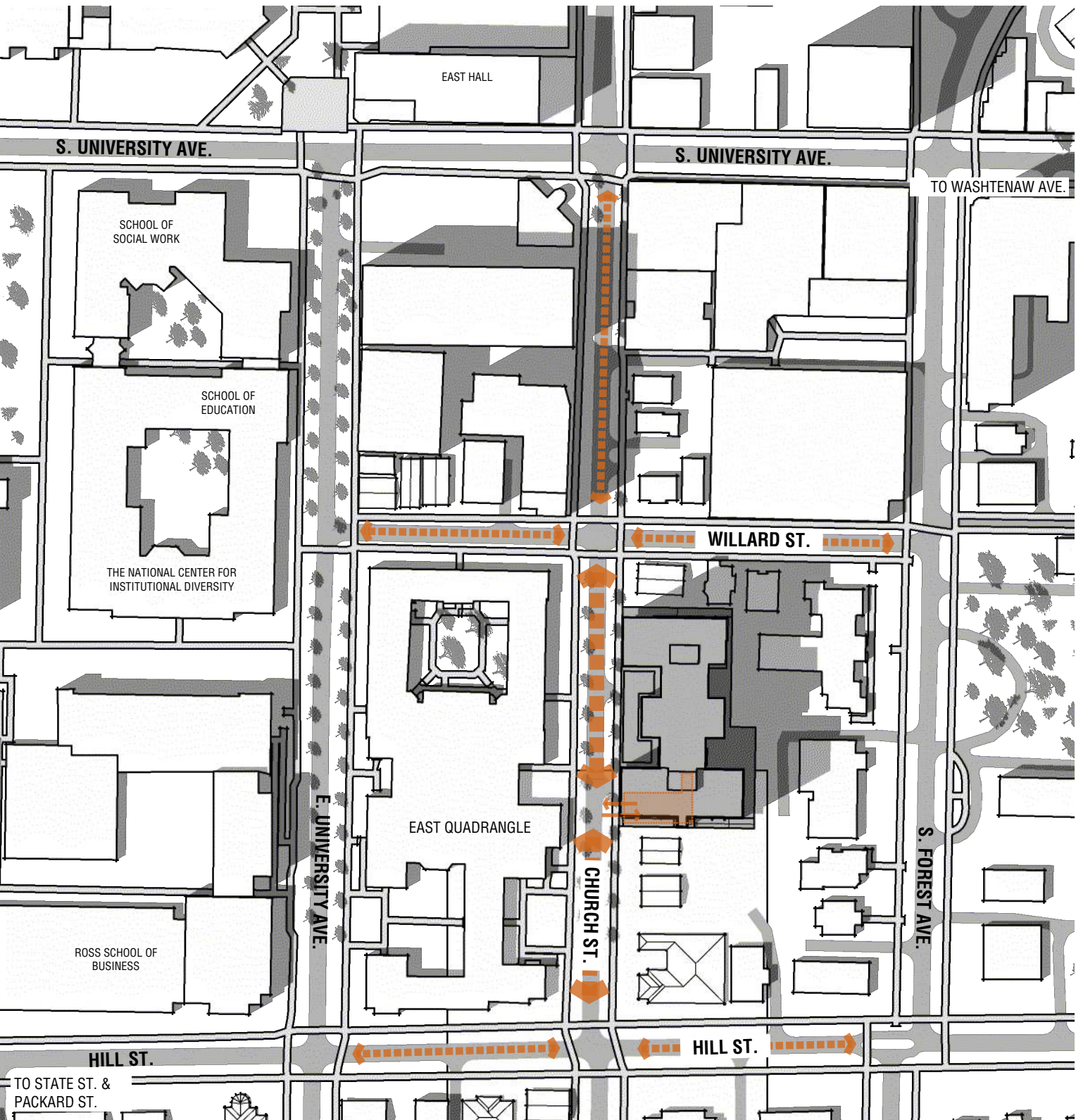




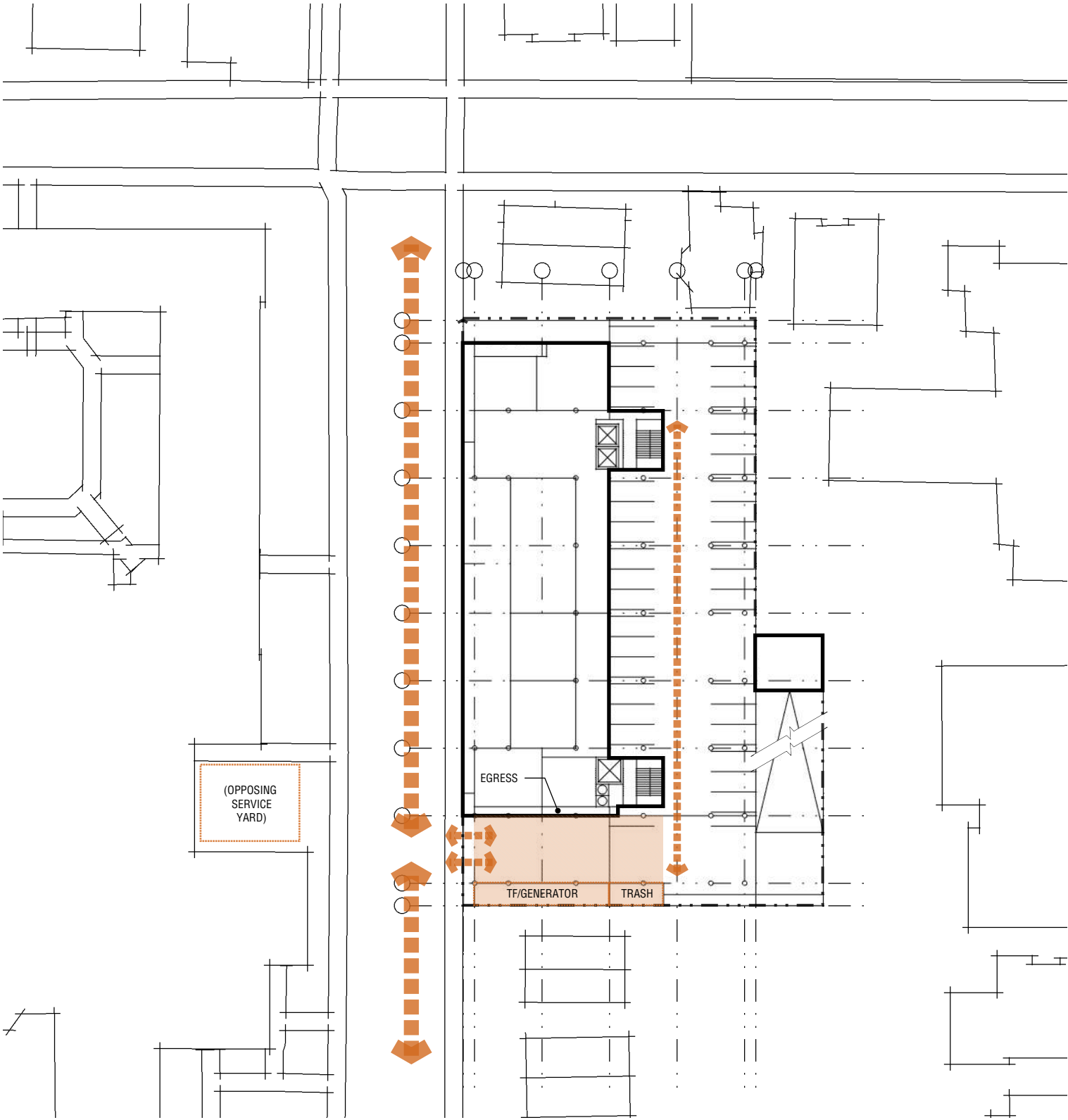






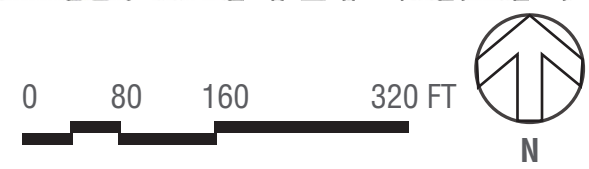
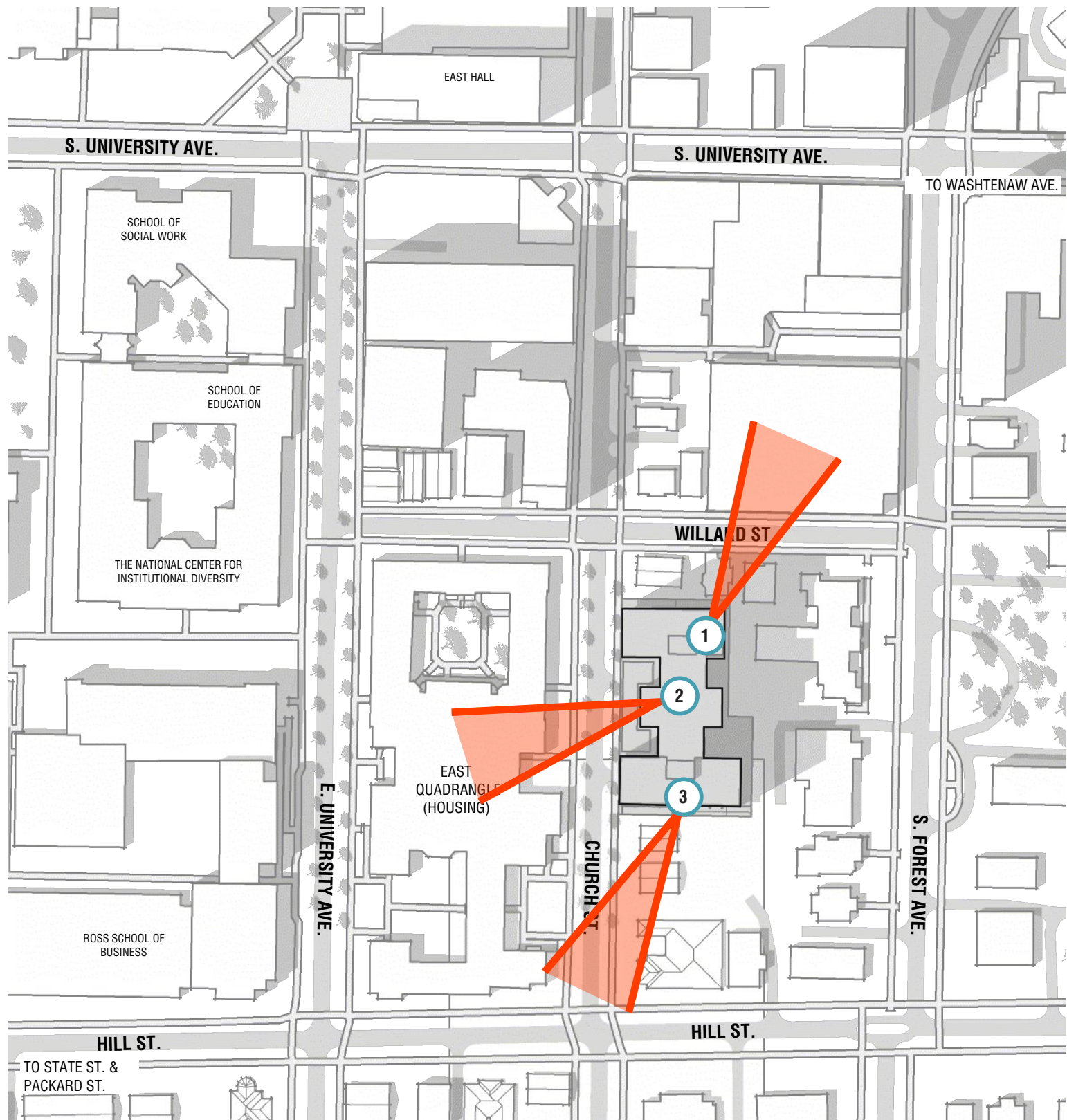


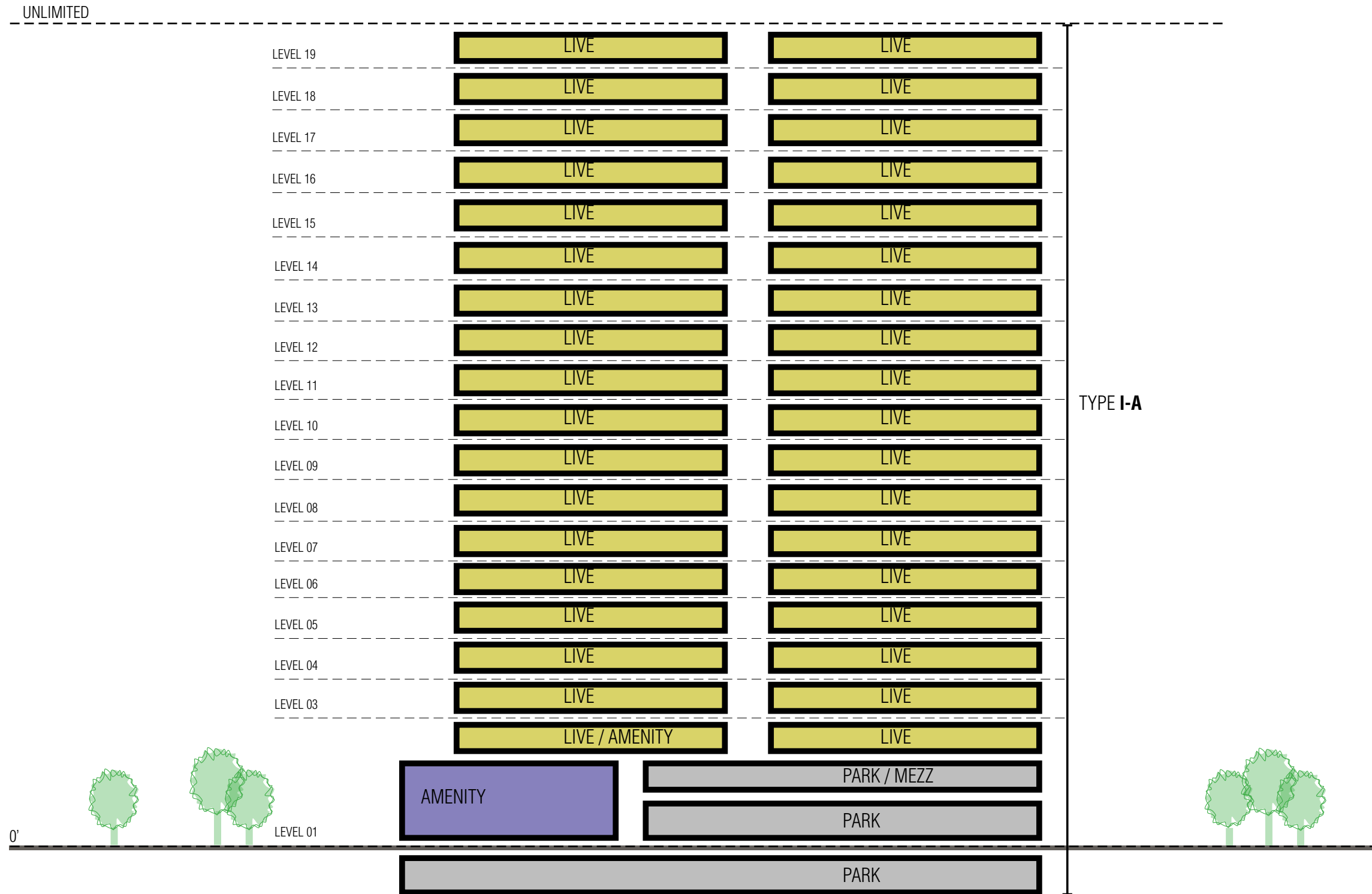
0 80 160 320 FT



0 20 40 80 FT

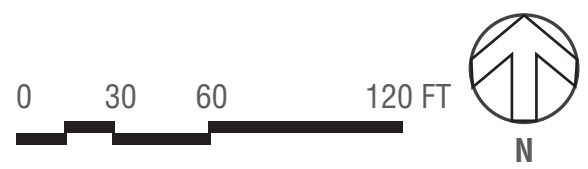
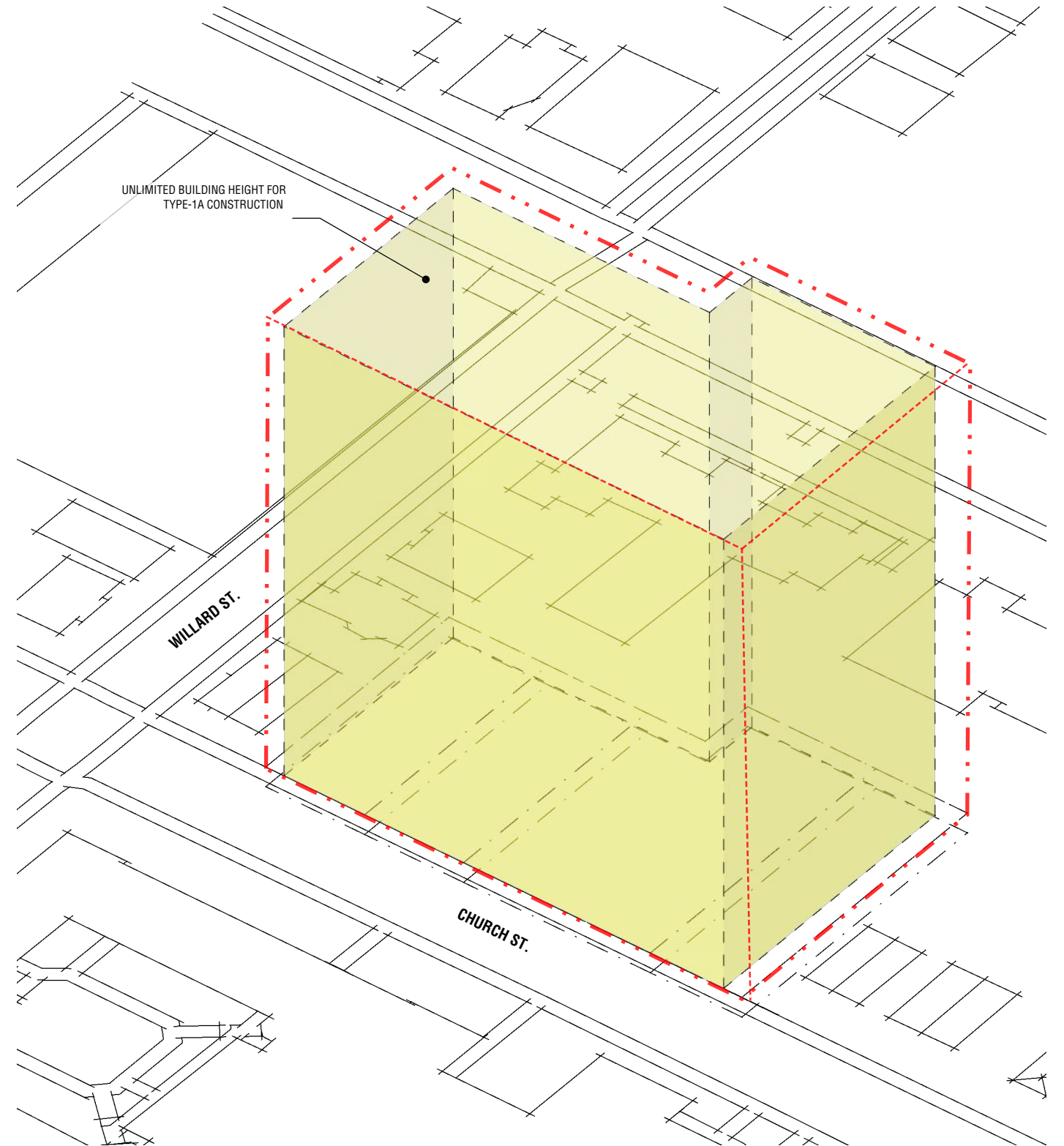
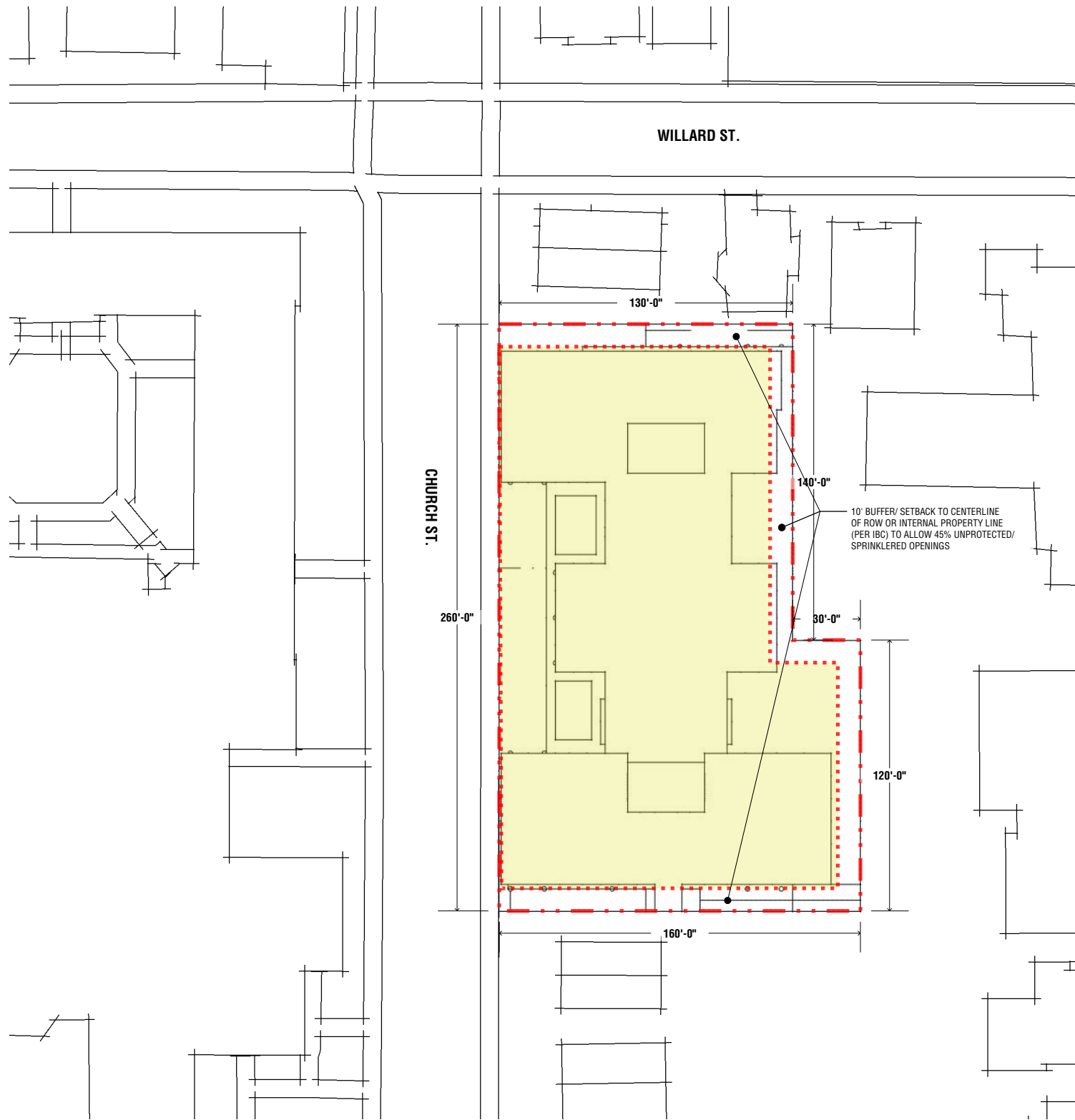






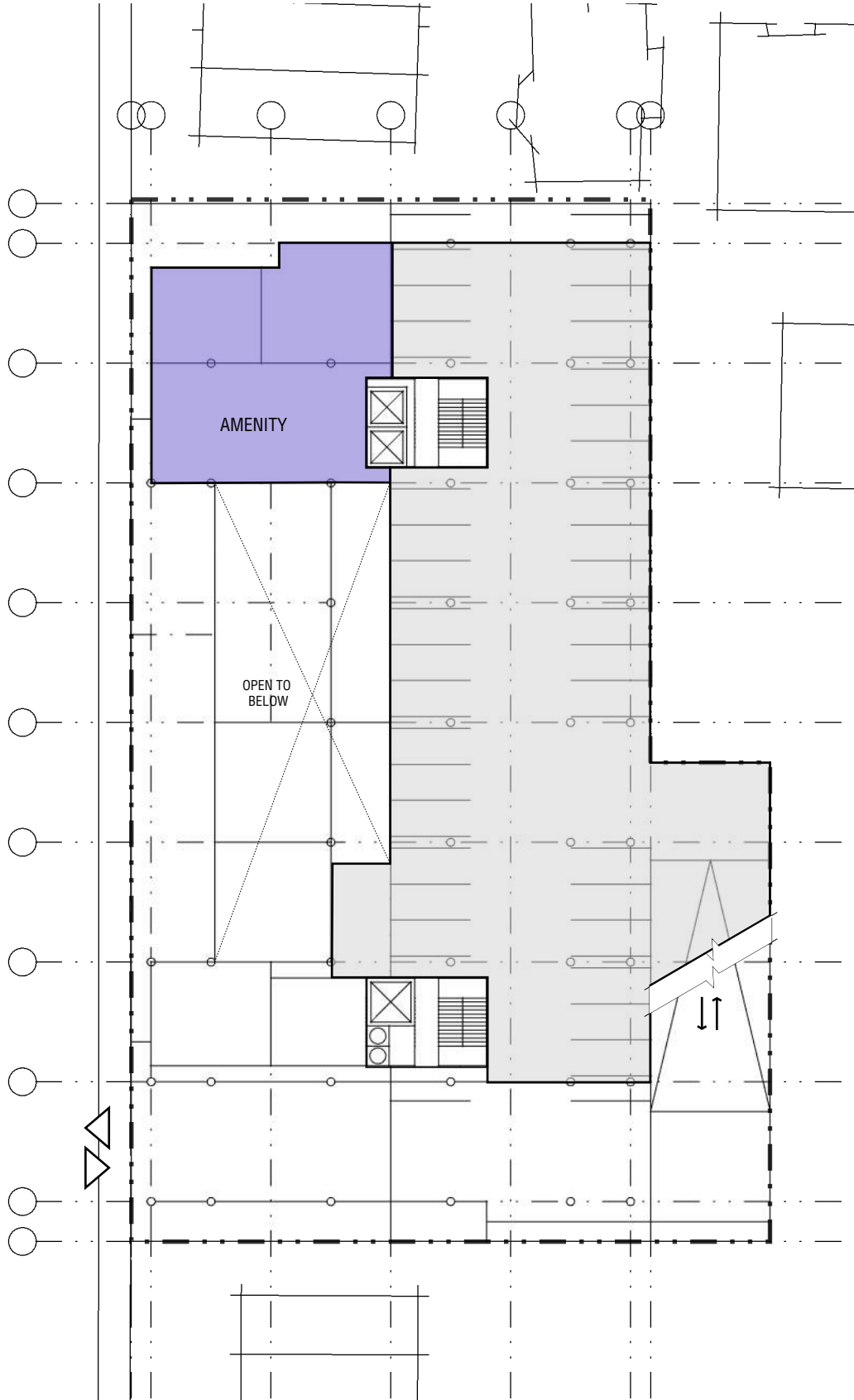
**TYPE I-A CONSTRUCTION - FIRE-RESISTANCE RATING OF ELEMENTS**

PRIMARY STRUCTURAL FRAME - 3HRS, BEARING WALLS (EXTERIOR AND INTERIOR) - 3HRS,  
 FLOOR CONSTRUCTION - 2HRS, ROOF CONSTRUCTION - 1.5HRS





LEVEL 01

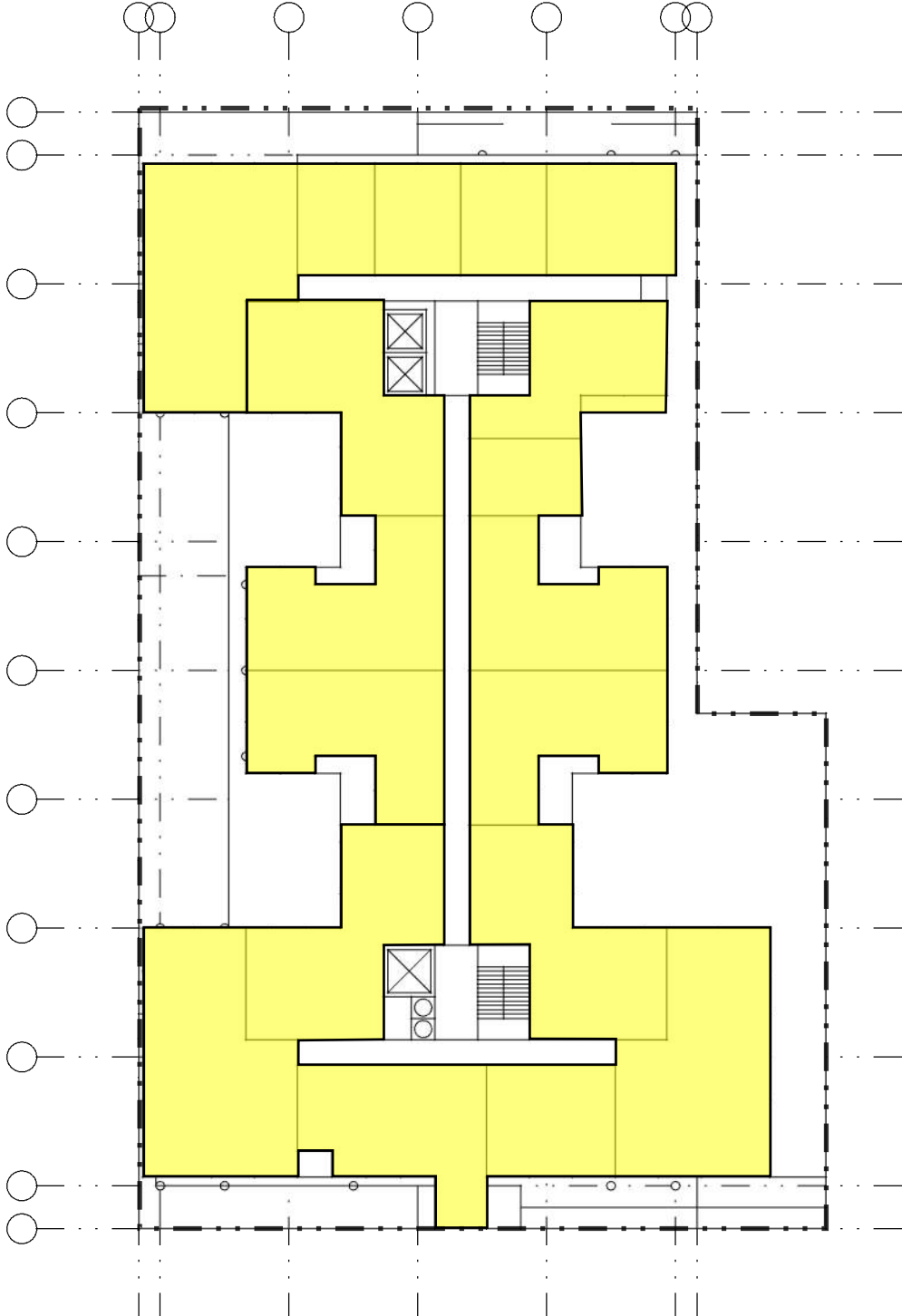


LEVEL 01B / MEZZANINE





LEVEL 02

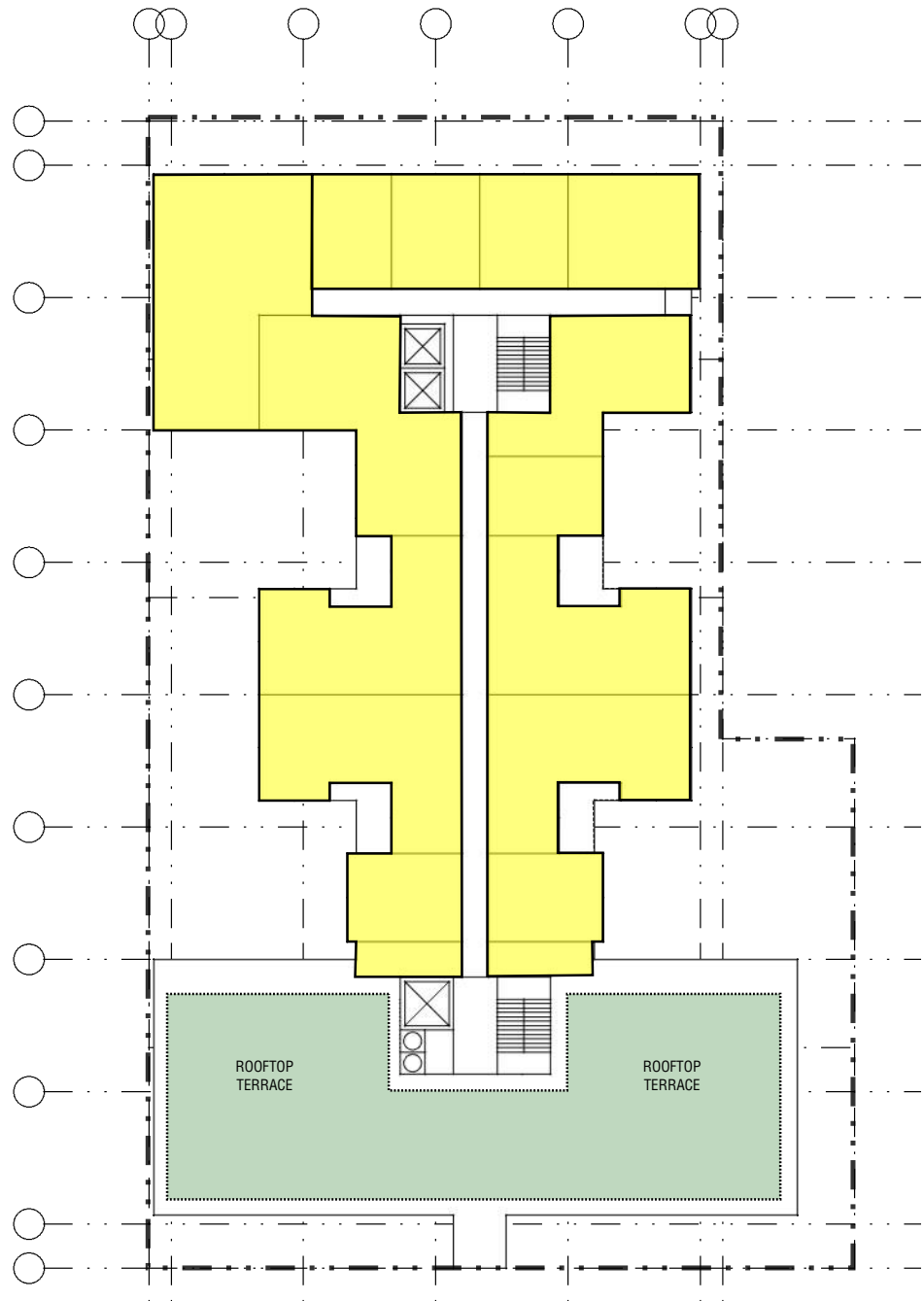


LEVEL 03-18 (TYP)

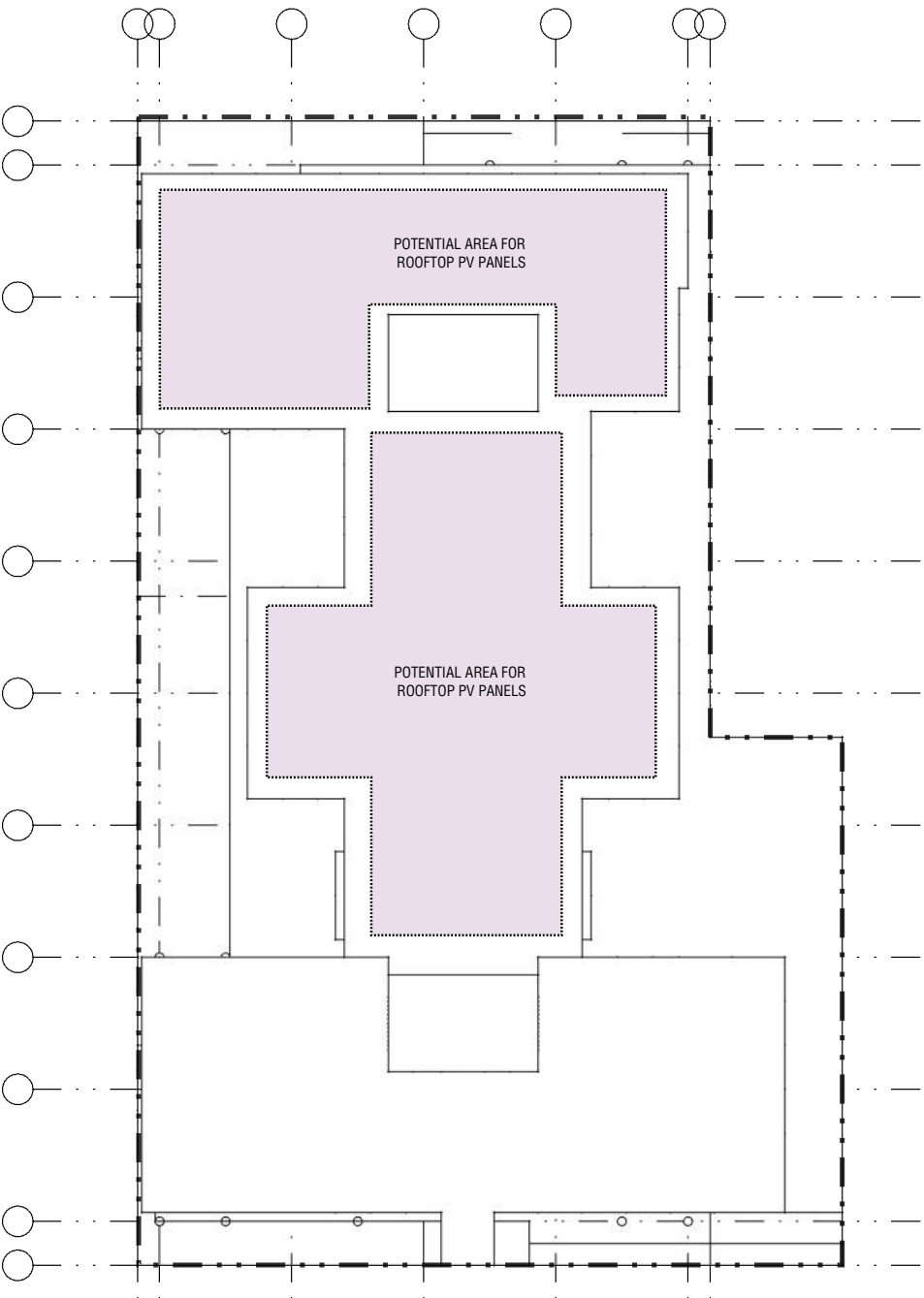
RESIDENTIAL AMENITY







LEVEL 19

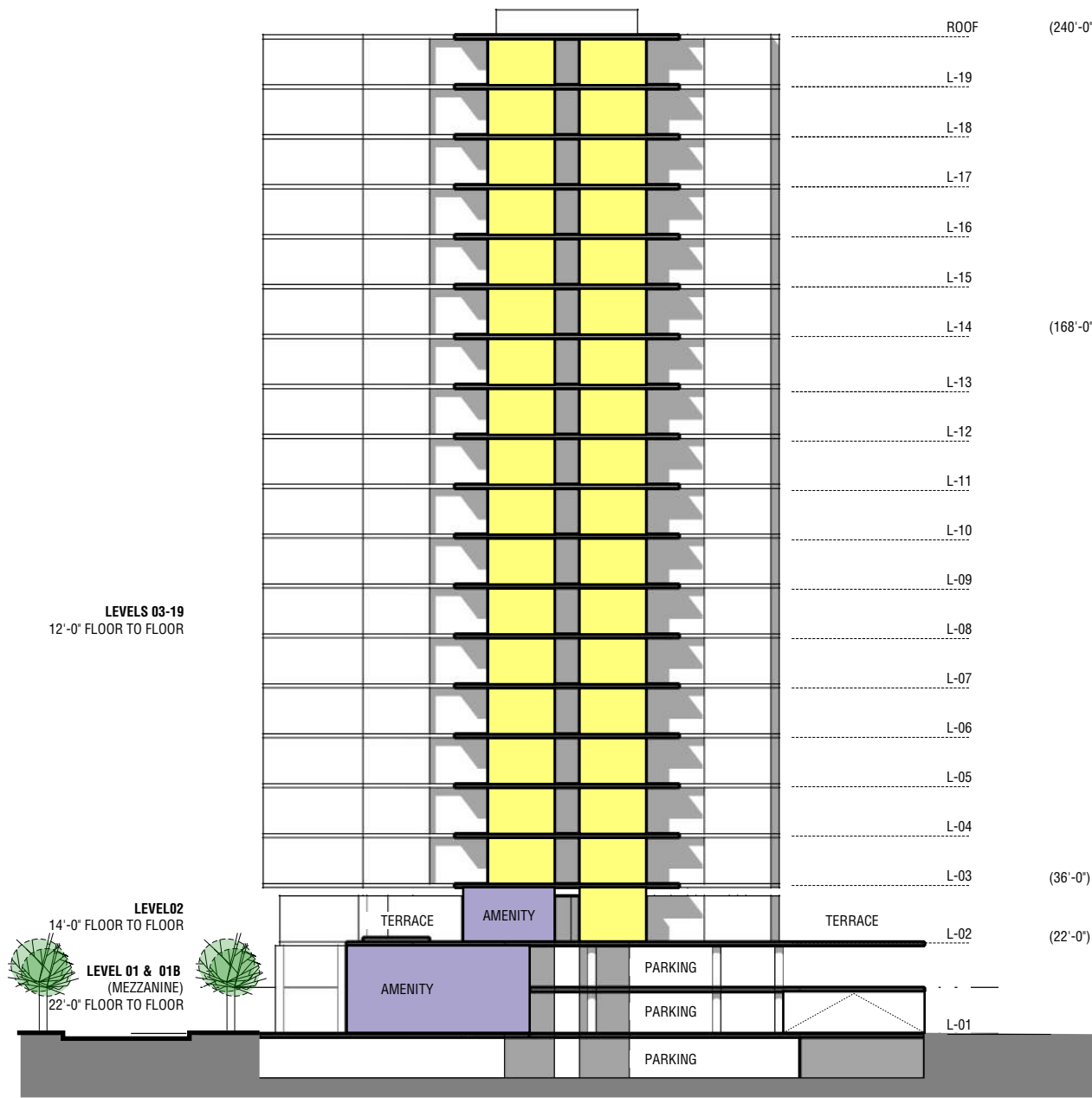


LEVEL ROOF



N

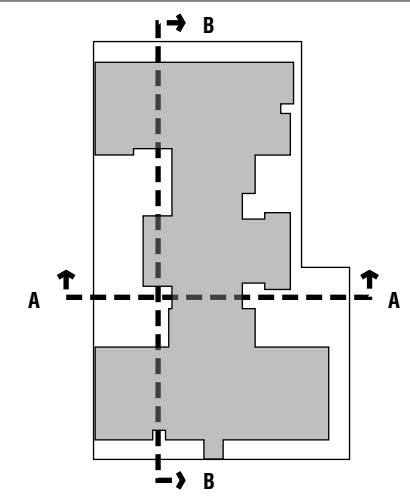


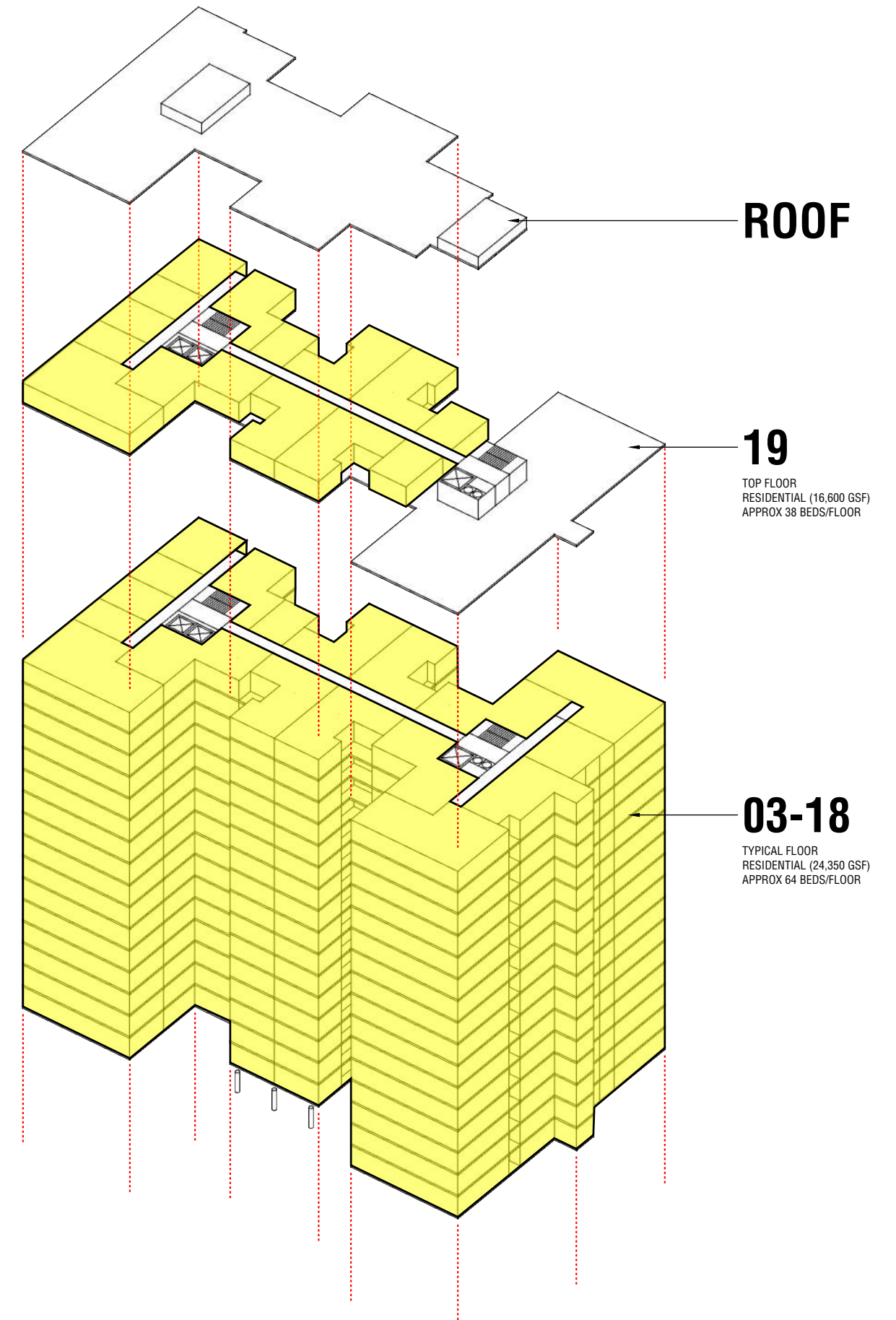
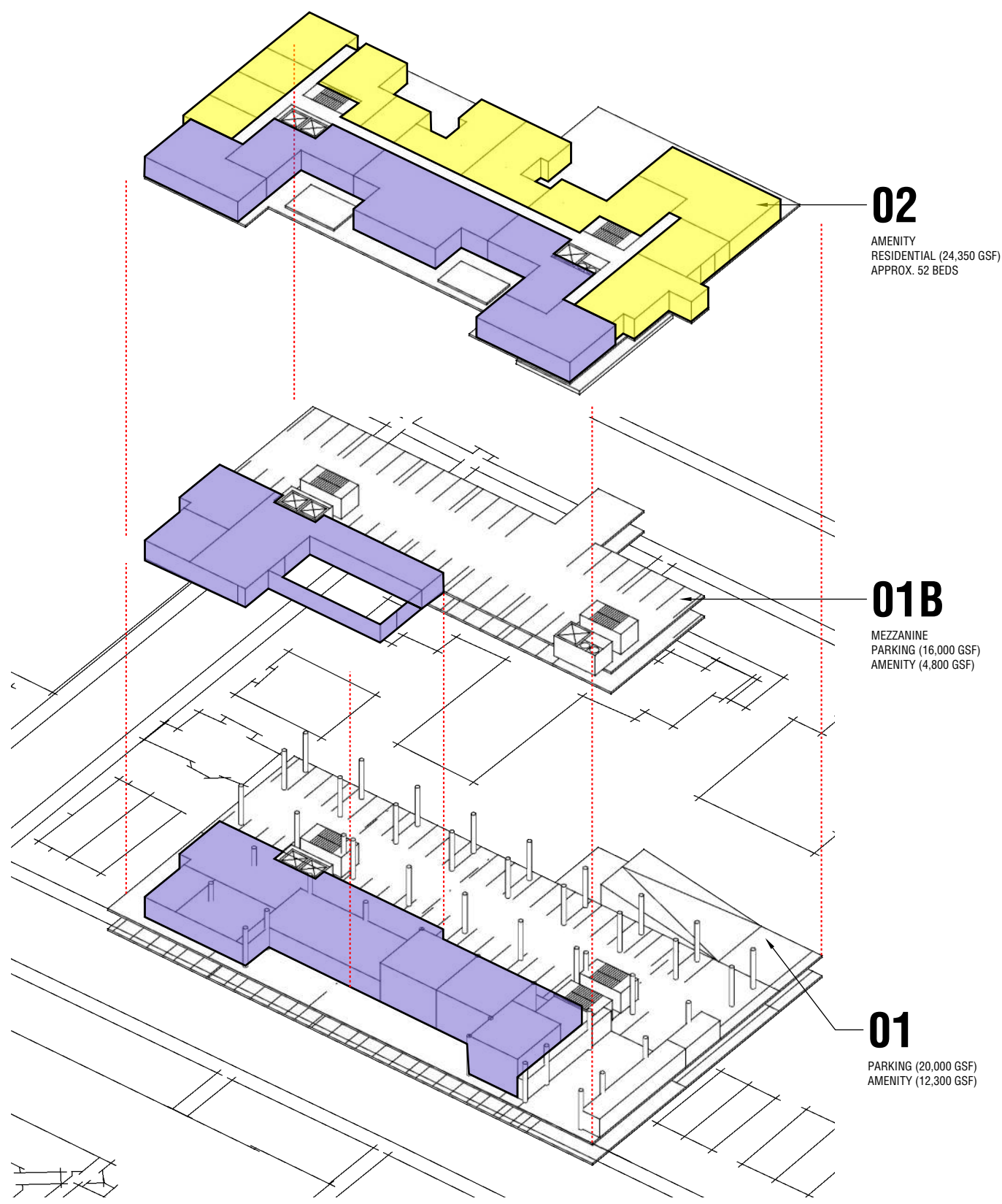


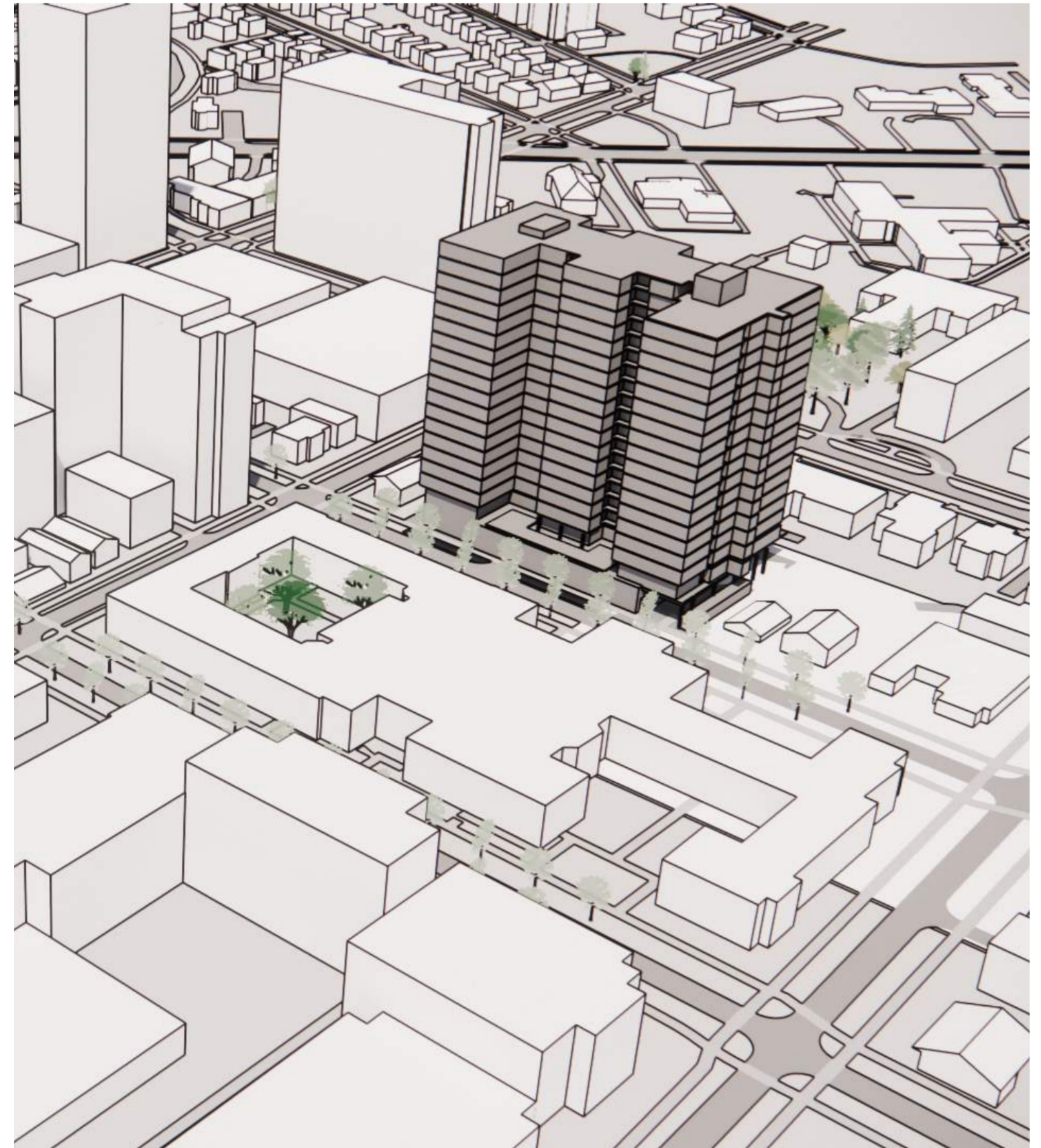
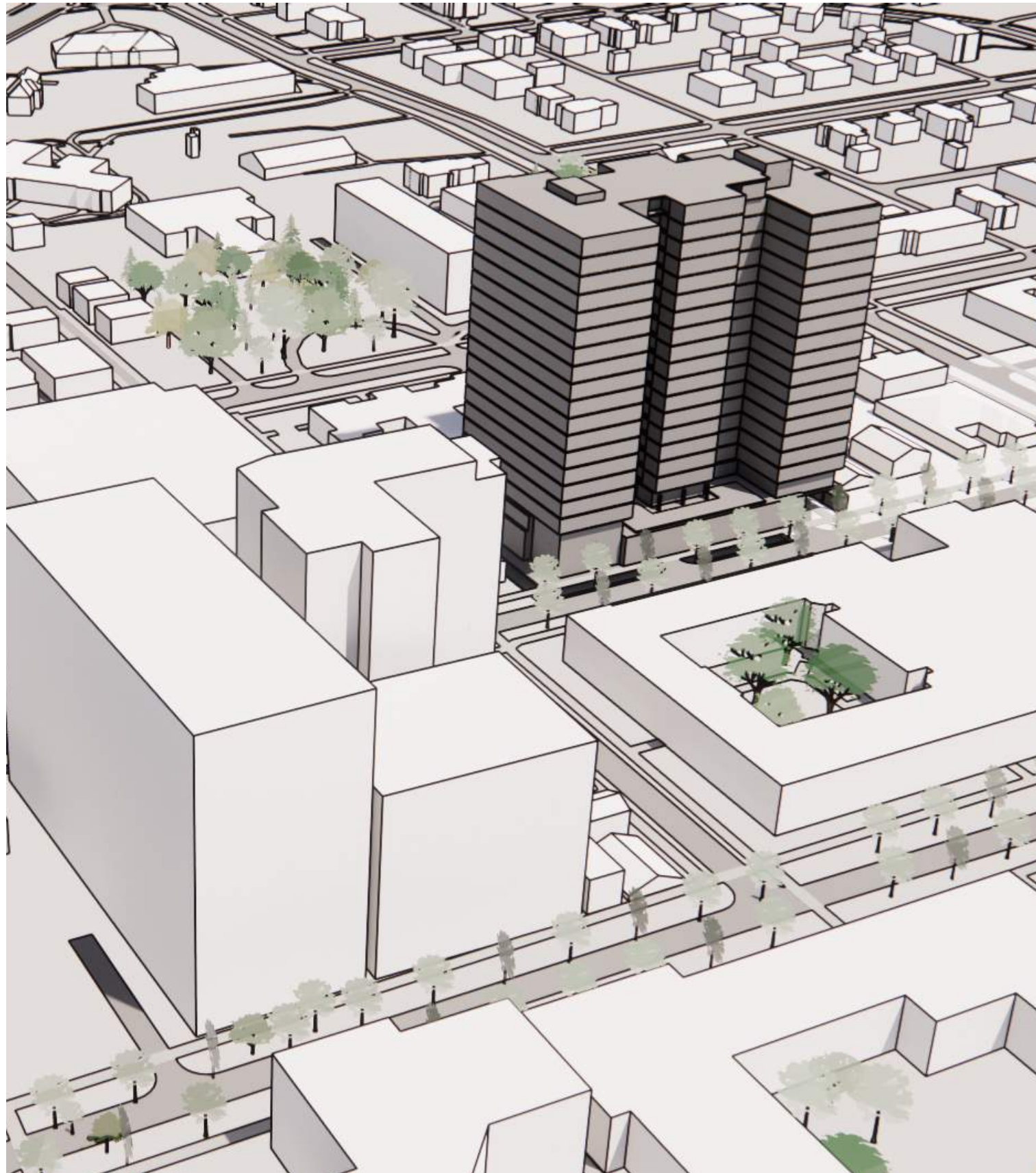
SECTION EAST-WEST - A



SECTION NORTH-SOUTH - B









---

3003 Larimer St  
Denver, CO 80205  
303.861.5704  
ozarch.com