

## Hoskins Residence, 320 S Seventh Street



East elevation



North-east corner



North elevation



South elevation



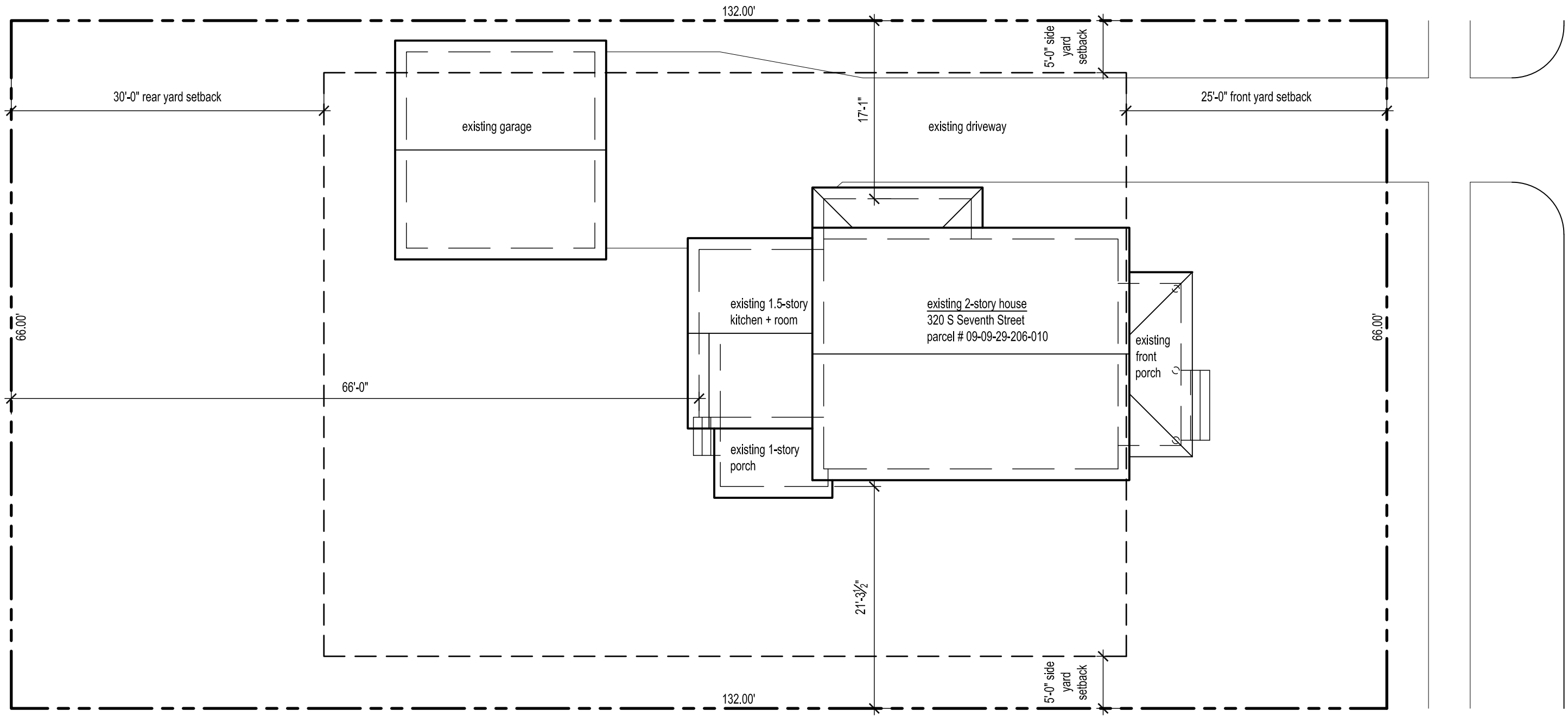
West elevation

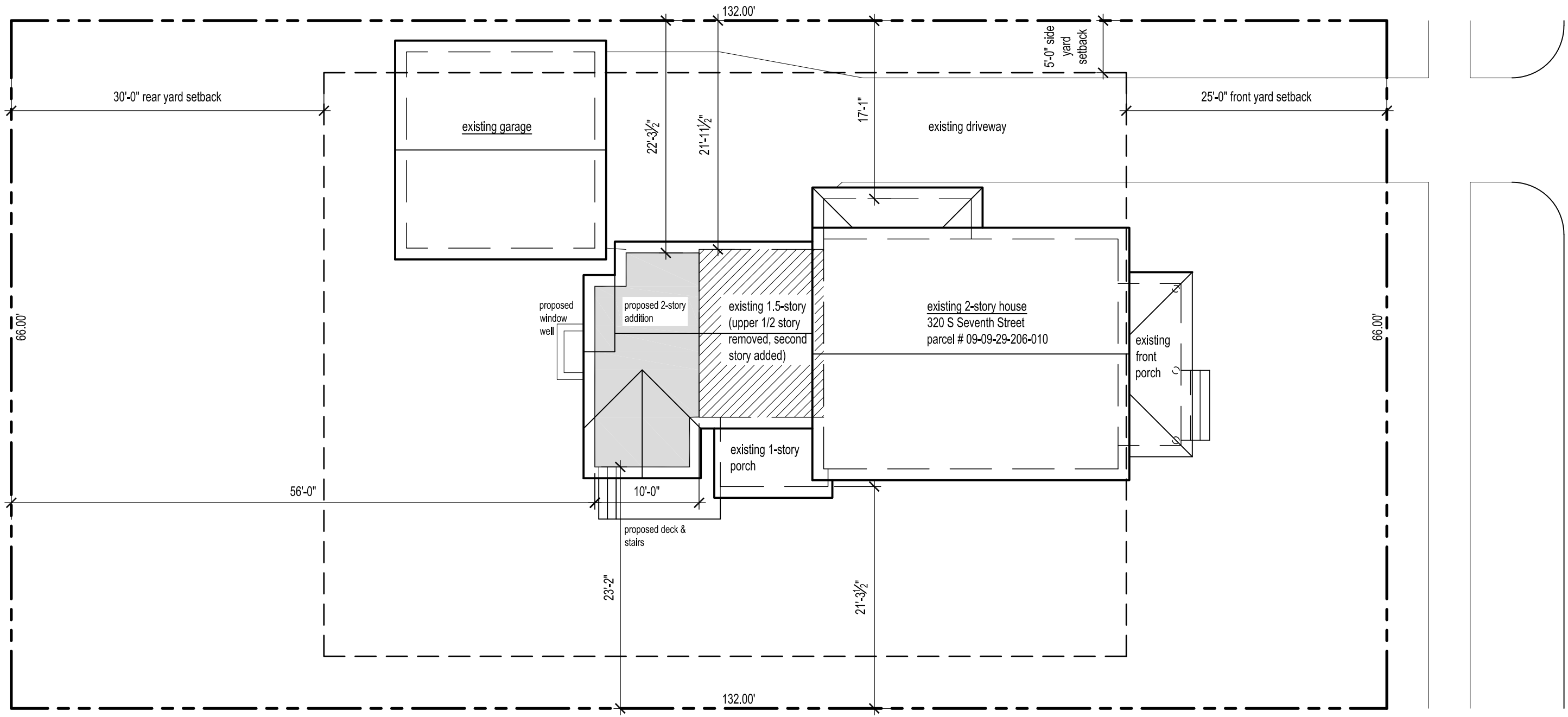


Southwest corner

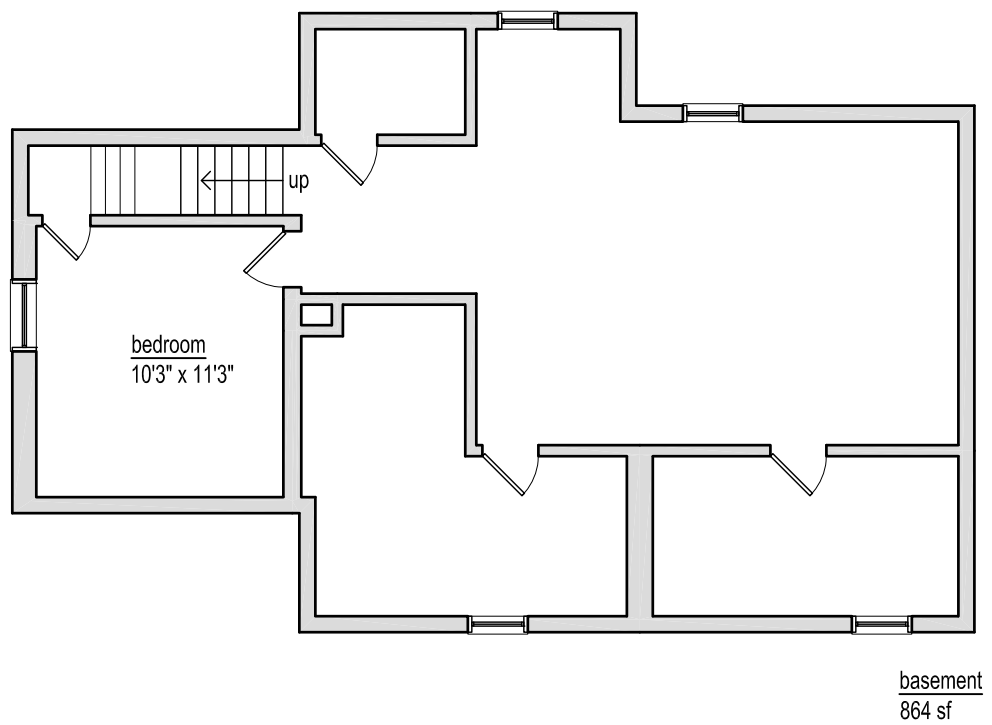
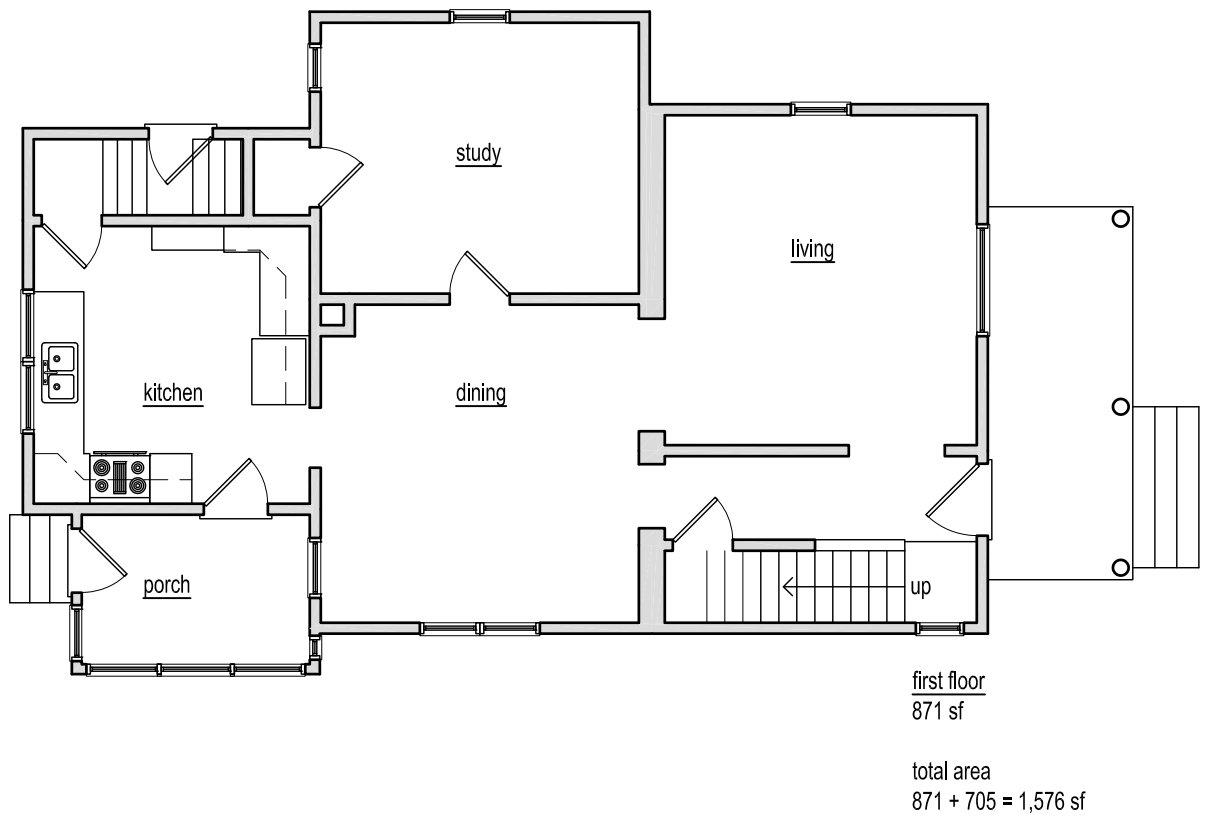
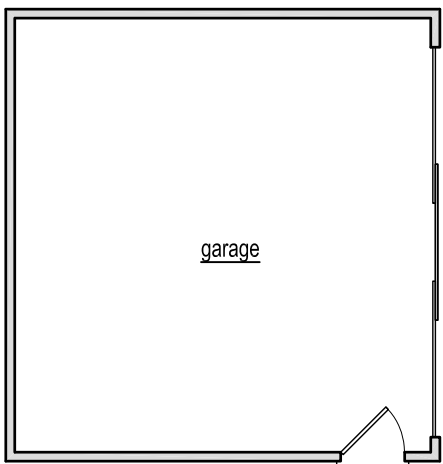
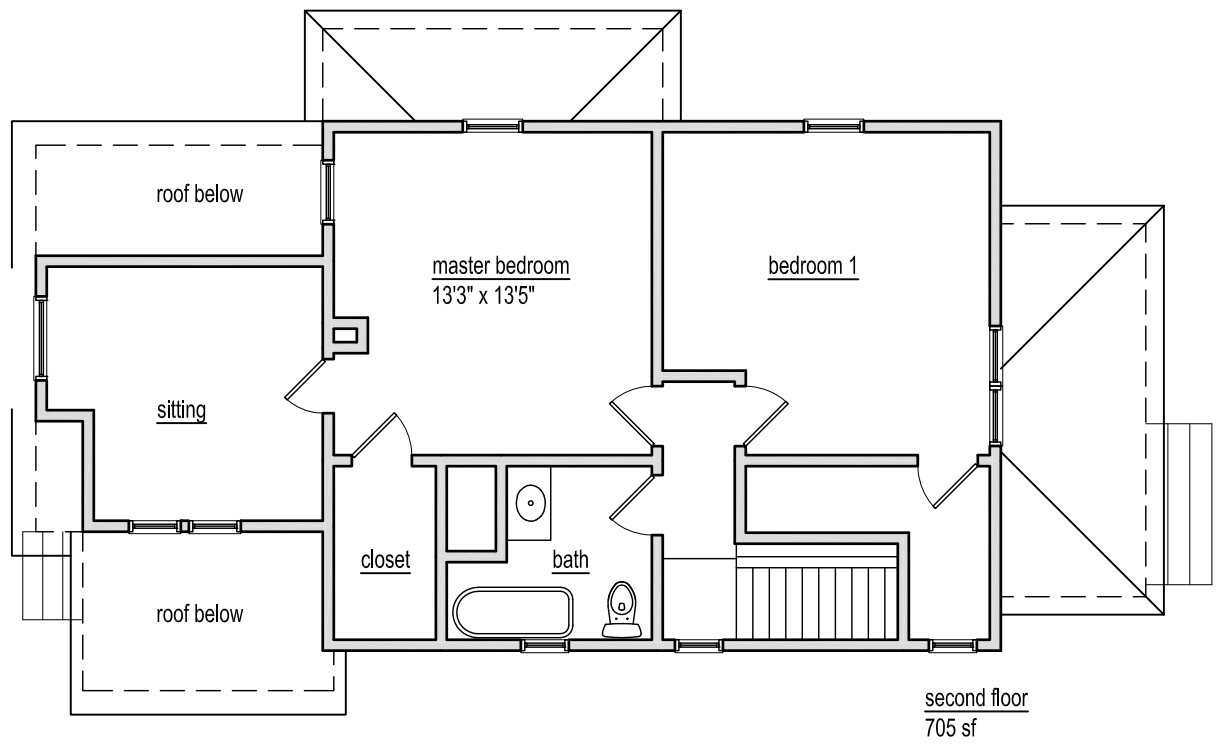


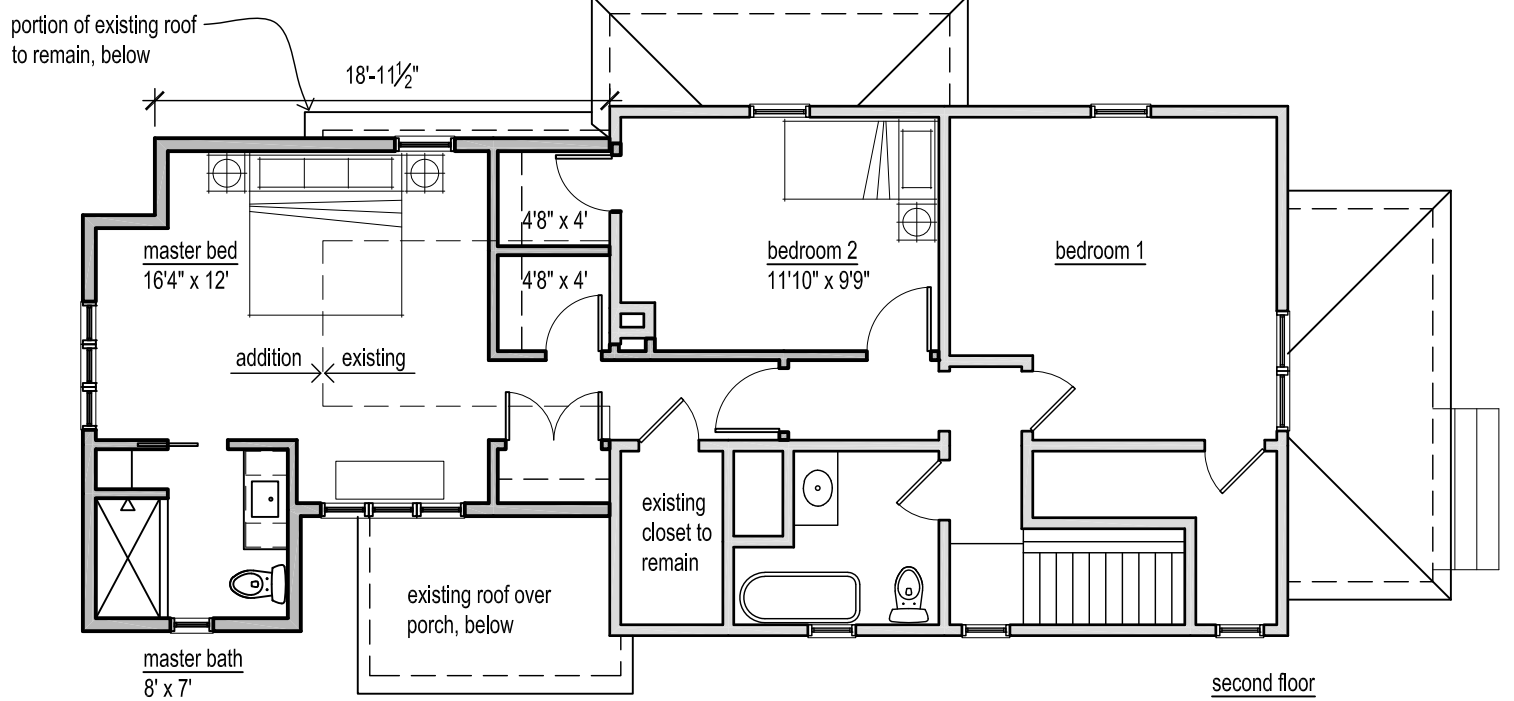
Interior basement stair – door overhangs landing and steps



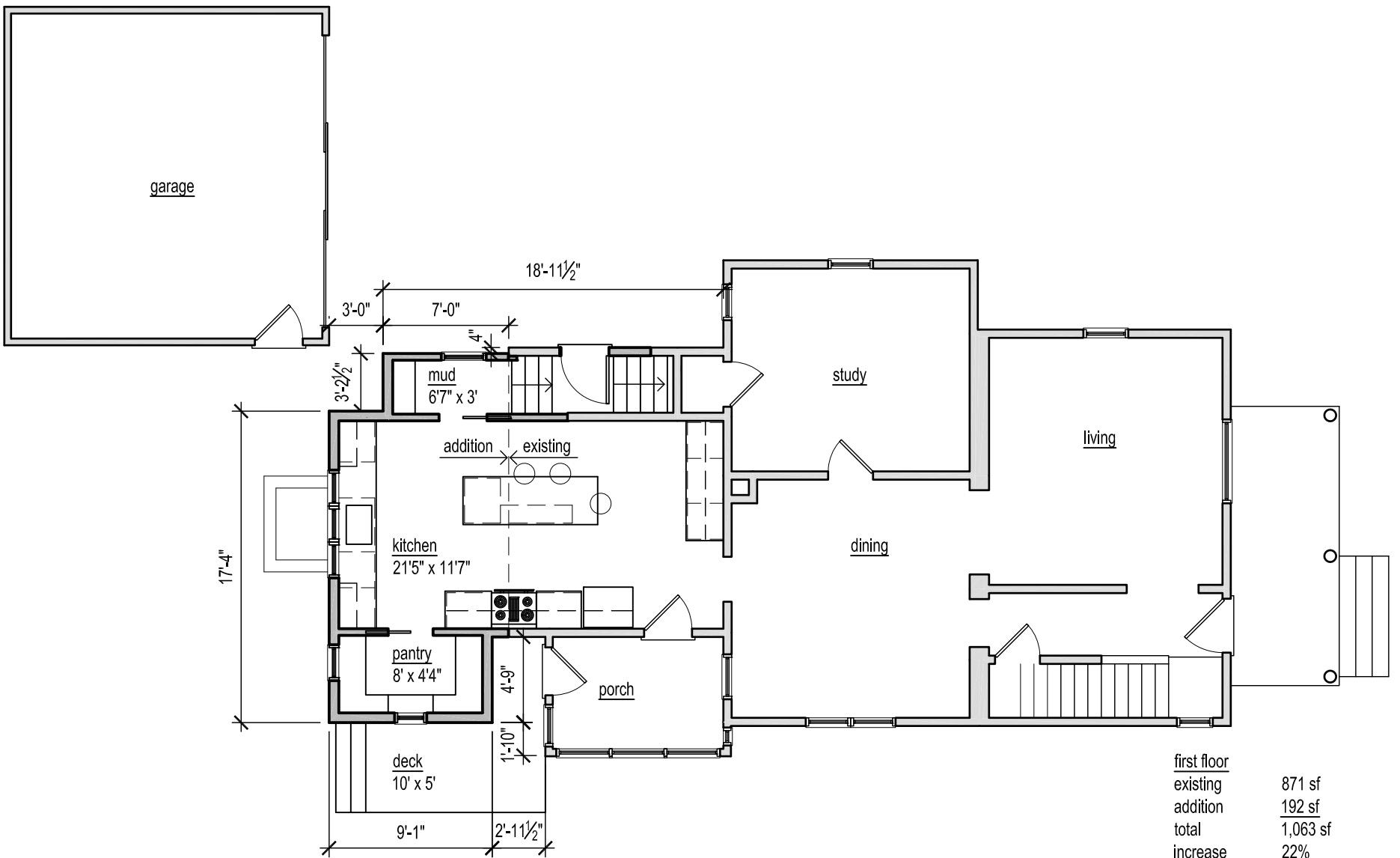


S SEVENTH STREET



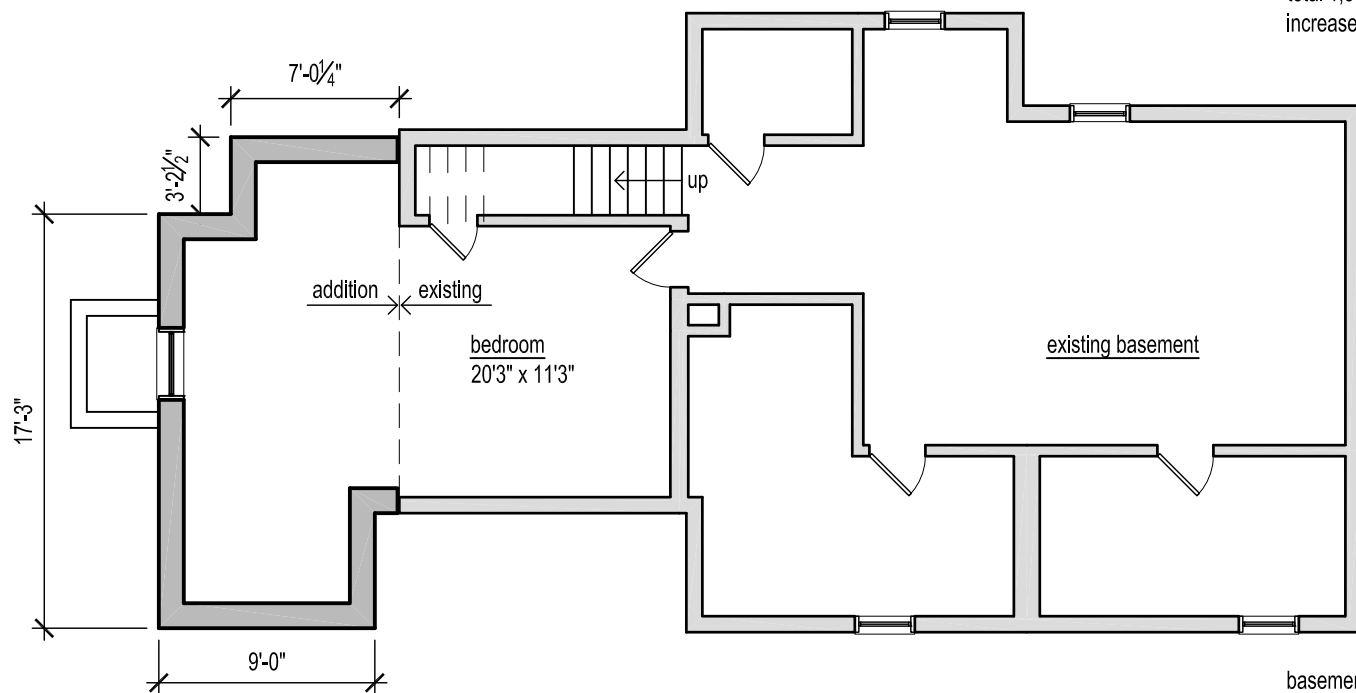


<u>second floor</u>	
existing	705 sf
addition	298 sf
<b>total</b>	<b>1,003 sf</b>
increase	42.2%



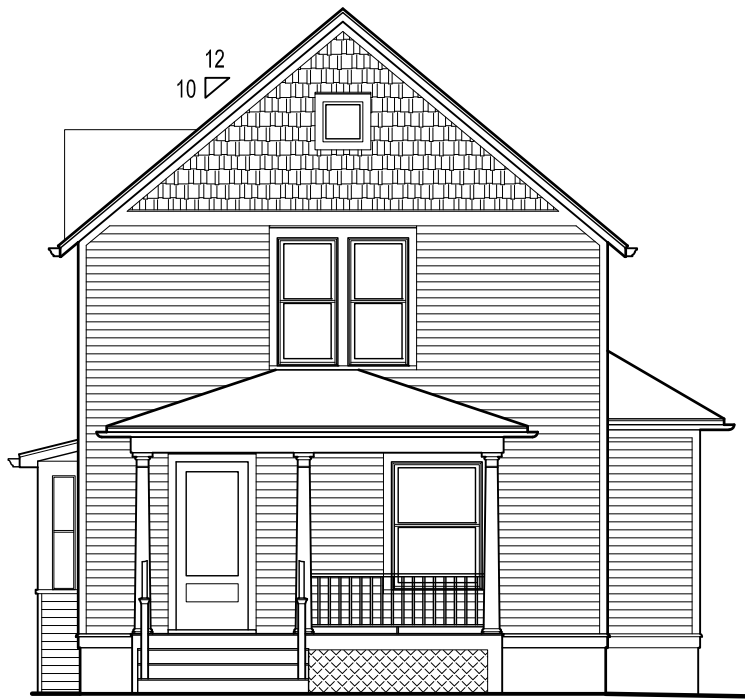
<u>first floor</u>	
existing	871 sf
addition	192 sf
<b>total</b>	<b>1,063 sf</b>
increase	22%

<u>total area</u>	
existing	871 + 705 = 1,576 sf
addition	194 + 304 = 498 sf
<b>total</b>	<b>1,576 + 498 = 2,074 sf</b>
increase	31.6%

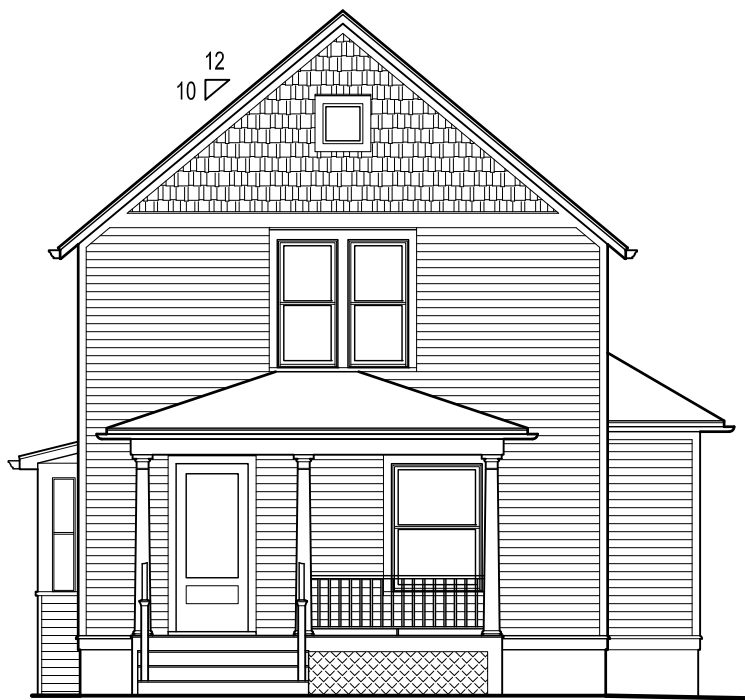


<u>basement</u>	
existing	864 sf
addition	192 sf
<b>total</b>	<b>1,056 sf</b>

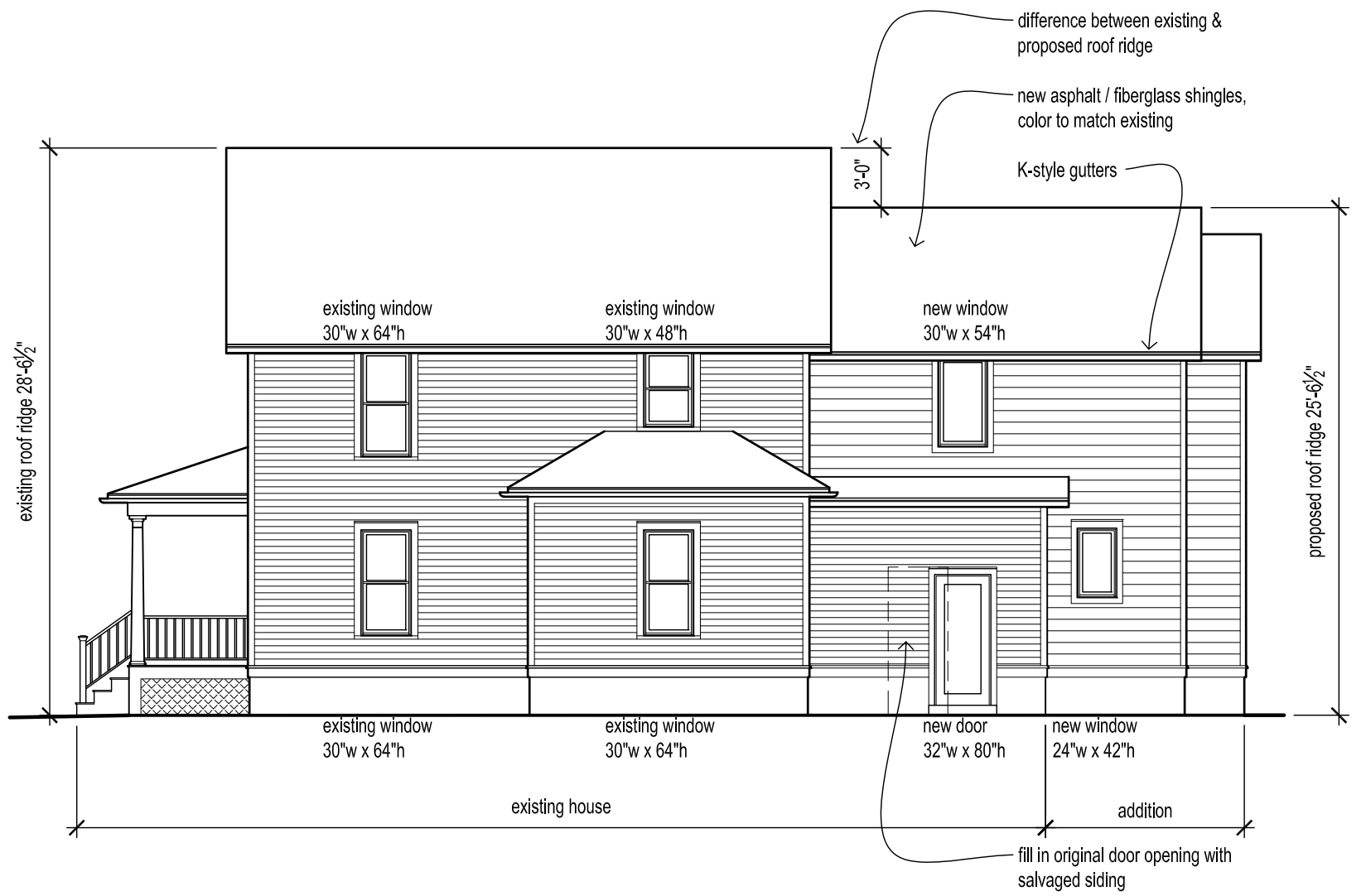




EAST elevation - proposed



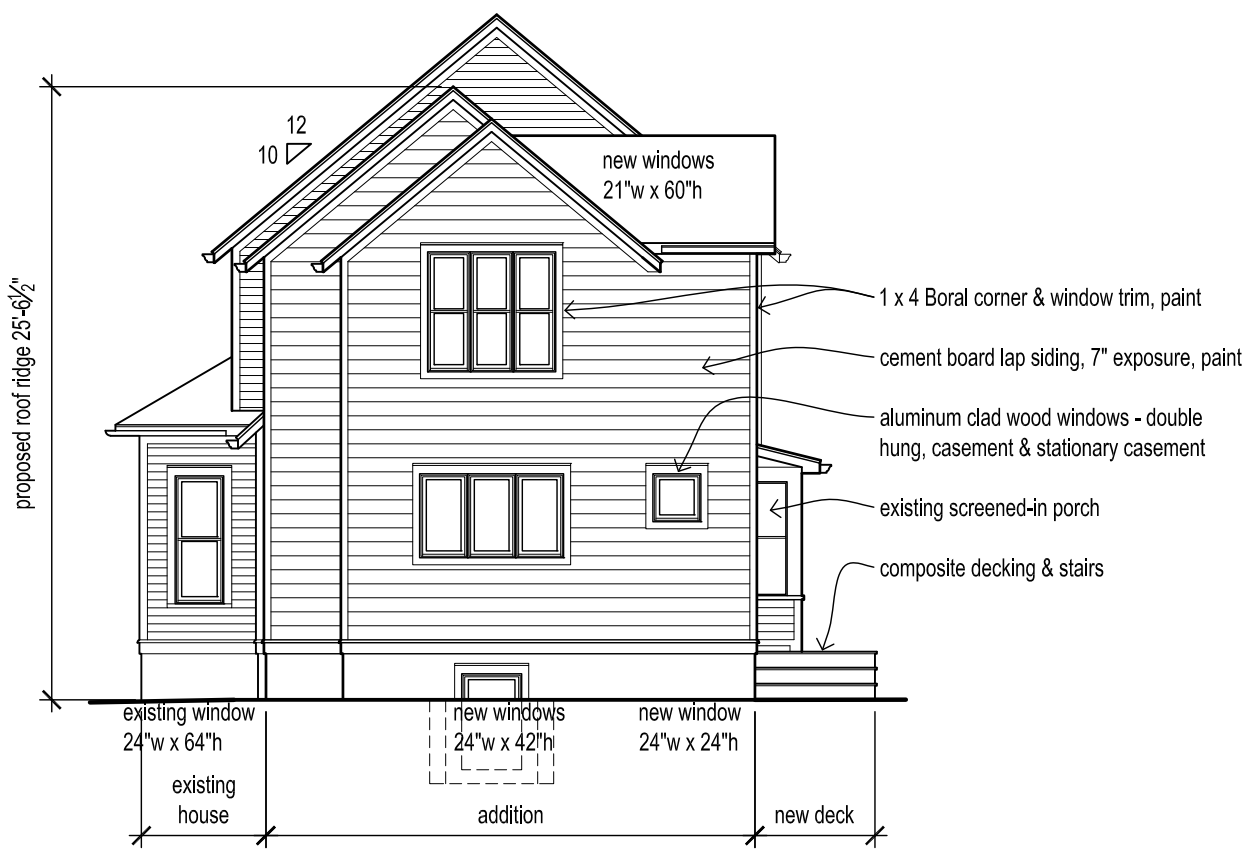
EAST elevation - existing



NORTH elevation - proposed



NORTH elevation - existing



WEST elevation - proposed



WEST elevation - existing

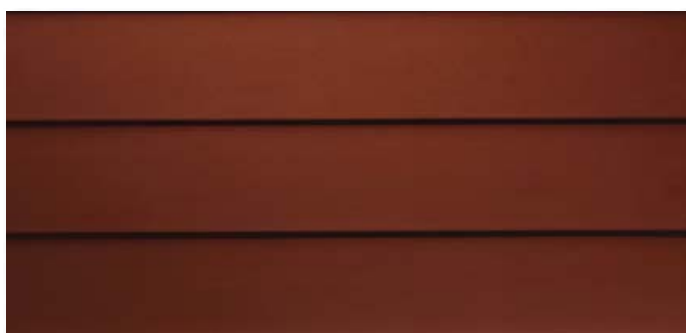


SOUTH elevation - proposed



SOUTH elevation - existing

Siding	Trim	Soffit	HardieWrap®	Finishing Touches
● HardiePlank® Lap Siding		HardiePanel® Vertical Siding		HardieShingle® Siding



**SMOOTH**

*Countrylane Red*

Thickness	5/16 in.					
Length	12 ft. planks					
Width	5.25 in.	6.25 in.	7.25 in.	8.25 in.	9.25 in.*	12 in.**
Exposure	4 in.	5 in.	6 in.	7 in.	8 in.	10.75 in.
ColorPlus Pcs./Pallet	324	280	252	210		
Prime Pcs./Pallet	360	308	252	230	190	152
Pcs./Sq.	25.0	20.0	16.7	14.3	12.5	9.3

Available Colors



[View all HardiePlank Lap Siding Products](#)

\*9.25 in. only available primed.  
 \*\*12 in. only available primed and in select areas.

Siding

Trim

Soffit

HardieWrap®

Finishing Touches

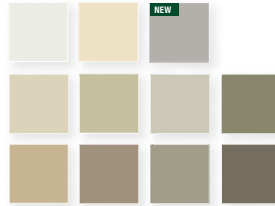


### VENTED CEDARMILL®

*Cobble Stone*

Thickness	1/4 in.		
Length	12 ft.	12 ft.	8 ft.
Width	12 in.	16 in.	24 in.
ColorPlus Pcs./Pallet	216	156	108
Prime Pcs./Pallet	200	150	100

#### Available Colors



[View all HardieSoffit Products](#)

Introducing a vast collection of home interior and exterior products that express home design in every way imaginable.

**TruExterior**®  
Siding & Trim

## TRIM

### The Freedom To Create **Your Custom Look**

TruExterior offers you the versatility to create virtually any custom look that you want for your homes. With the ability to cut, miter and route TruExterior Trim, you can shape your perfect profile and know your trim will outlast traditional wood.

- Better workability compared to wood, fiber cement or engineered wood trim

- Installs with standard woodworking tools and methods
- No edge sealing of cuts required
- Pre-primed and ready to paint any color
- Available in 16' lengths



## Request Sample

[Sample Request Form](#)

## Technical Data

[TruExterior Trim – Product Data Sheet](#)

## Product Certifications

[SCS Global Services – Minimum 70% Recycled Content](#)



[View Idea Gallery](#)

5/8 Trim Sizes		1X Trim Sizes		5/4 Trim Sizes		2X Trim Sizes	
Nominal	Actual	Nominal	Actual	Nominal	Actual	Nominal	Actual
						2 x 2	1-1/2" x 1-1/2"
		1 x 3	3/4" x 2-1/2"	5/4 x 3	1" x 2-1/2"		
5/8 x 4	5/8" x 3-1/2"	1 x 4	3/4" x 3-1/2"	5/4 x 4	1" x 3-1/2"	2 x 4	1-1/2" x 3-1/2"
		1 x 5	3/4" x 4-1/2"	5/4 x 5	1" x 4-1/2"		
5/8 x 6	5/8" x 5-1/2"	1 x 6	3/4" x 5-1/2"	5/4 x 6	1" x 5-1/2"	2 x 6	1-1/2" x 5-1/2"
5/8 x 8	5/8" x 7-1/4"	1 x 8	3/4" x 7-1/4"	5/4 x 8	1" x 7-1/4"	2 x 8	1-1/2" x 7-1/4"
5/8 x 10	5/8" x 9-1/4"	1 x 10	3/4" x 9-1/4"	5/4 x 10	1" x 9-1/4"	2 x 10	1-1/2" x 9-1/4"
5/8 x 12	5/8" x 11-1/4"	1 x 12	3/4" x 11-1/4"	5/4 x 12	1" x 11-1/4"	2 x 12	1-1/2" x 11-1/4"





Home » Windows » Siteline Wood » Casement » Siteline Wood Casement Window

## SITELINE WOOD CASEMENT WINDOW



[Product Overview](#)

[Design Options](#)

[Glass Options](#)

[Build & Installation](#)

[Tech Documents](#)

Built from AuraLast® Wood (Pine) - The Wood That Does Not Rot. Other species include Alder and Douglas Fir. Other options include 22 clad colors, grilles, and ENERGY STAR®.

### FEATURES

- **Custom Capabilities:** size, shape, glass, grille design
- **Exterior Clad Color Options:** 9 standard colors, 13 optional colors and 7 anodized clad exterior colors
- **Exterior Wood Options:** Natural or Primed AuraLast Pine
- **Interior Wood Species:** natural or primed AuraLast pine, douglas fir, alder
- **Interior Finishes:** 9 standard wood interior finishes

- **Trim Options:** exterior clad and wood trim profiles, interior wood trim profiles
- **Glass Options:** Low-E 366 and Neat standard with energy efficient, protective, textured, tinted options available
- **Hardware Options:** 9 window hardware finishes options - as well as optional factory installed Window Opening Control Device (WOCD)
- **Maintenance Level:** moderate
- **Project Type:** new construction and replacement
- **ENERGY STAR® Certified Options:** yes
- **Sustainable Solutions:** AuraLast® Wood (pine) is standard. Two wood-source certification options are available on AuraLast® Wood: Sustainable Forestry Initiative® (SFI) or Forest Stewardship Council™ (FSC®).
- **Warranty:** 20 year general warranty & lifetime limited warranty against rot and termites

## **SIZING**

**Elevations - Siteline - Clad Awning - Standard Sizing**

**Elevations - Siteline - Clad Casement - Standard Sizing**

**Elevations - Siteline - Clad DH - Standard Sizing**

**Elevations - Siteline - Clad Direct Set - Standard Sizing**

**Elevations - Siteline - Clad InSwing Patio Door - ADM**

**Elevations - Siteline - Clad OutSwing Patio Door - Standard Sizing**

**Elevations - Siteline - Clad Sliding Patio Door - Standard Sizing**

**Elevations - Siteline - Wood Awning - Standard Sizing**

**Elevations - Siteline - Wood Casement - Standard Sizing**

**Elevations - Siteline - Wood Double Hung - Standard Sizing**

**Elevations - Siteline - Wood InSwing Patio Door - Standard Sizing**

**Elevations - Siteline - Wood OutSwing Patio Door - Standard Sizing**

**Elevations - Siteline - Wood Sliding Patio Door - Standard Sizing**

**Elevations / Sections - Siteline - Clad Awning - ADM**

**Elevations / Sections - Siteline - Clad Casement - ADM**

**Elevations / Sections - Siteline - Clad Direct Set - ADM**

**Elevations / Sections - Siteline - Clad Direct Set - Standard Sizing**

**Elevations / Sections - Siteline - Clad Double Hung - ADM**

**Elevations / Sections - Siteline - Wood Awning - ADM**

**Elevations / Sections - Siteline - Wood Casement - ADM**

**Elevations / Sections - Siteline - Wood Double Hung - ADM**

More Technical Documents

[BACK TO TOP](#)



Home » Windows » Siteline Wood » Double-Hung » Siteline Wood Double-Hung Window

## SITELINE WOOD DOUBLE-HUNG WINDOW



[Product Overview](#)

[Design Options](#)

[Glass Options](#)

[Build & Installation](#)

[Tech Documents](#)

Built from AuraLast® Wood (Pine) - The Wood That Does Not Rot. Other species include Alder and Douglas Fir. Other options include 22 clad colors, grilles, and ENERGY STAR®.

### FEATURES

- **Custom Capabilities:** size, shape, glass, grille design
- **Exterior Clad Color Options:** 9 standard colors, 13 optional colors and 7 anodized clad exterior colors
- **Exterior Wood Options:** Natural or Primed AuraLast Pine

- **Interior Wood Species:** natural or primed AuraLast pine, douglas fir, alder
- **Interior Finishes:** 9 standard wood interior finishes
- **Trim Options:** exterior clad and wood trim profiles, interior wood trim profiles
- **Glass Options:** Low-E 366 and Neat standard with energy efficient, protective, textured, tinted options available
- **Hardware Options:** 9 window hardware finishes options - as well as optional factory installed Window Opening Control Device (WOCD)
- **Maintenance Level:** moderate
- **Project Type:** new construction and replacement
- **ENERGY STAR® Certified Options:** yes
- **Sustainable Solutions:** AuraLast® Wood (pine) is standard. Two wood-source certification options are available on AuraLast® Wood: Sustainable Forestry Initiative® (SFI) or Forest Stewardship Council™ (FSC®).
- **Warranty:** 20 year general warranty & lifetime limited warranty against rot and termites

## SIZING

**Elevations - Siteline - Clad Awning - Standard Sizing**

**Elevations - Siteline - Clad Casement - Standard Sizing**

**Elevations - Siteline - Clad DH - Standard Sizing**

**Elevations - Siteline - Clad Direct Set - Standard Sizing**

**Elevations - Siteline - Clad InSwing Patio Door - ADM**

**Elevations - Siteline - Clad OutSwing Patio Door - Standard Sizing**

**Elevations - Siteline - Clad Sliding Patio Door - Standard Sizing**

**Elevations - Siteline - Wood Awning - Standard Sizing**

**Elevations - Siteline - Wood Casement - Standard Sizing**

**Elevations - Siteline - Wood Double Hung - Standard Sizing**

**Elevations - Siteline - Wood InSwing Patio Door - Standard Sizing**

**Elevations - Siteline - Wood OutSwing Patio Door - Standard Sizing**

**Elevations - Siteline - Wood Sliding Patio Door - Standard Sizing**

**Elevations / Sections - Siteline - Clad Awning - ADM**

**Elevations / Sections - Siteline - Clad Casement - ADM**

**Elevations / Sections - Siteline - Clad Direct Set - ADM**

**Elevations / Sections - Siteline - Clad Direct Set - Standard Sizing**

**Elevations / Sections - Siteline - Clad Double Hung - ADM**

**Elevations / Sections - Siteline - Wood Awning - ADM**

**Elevations / Sections - Siteline - Wood Casement - ADM**

**Elevations / Sections - Siteline - Wood Double Hung - ADM**