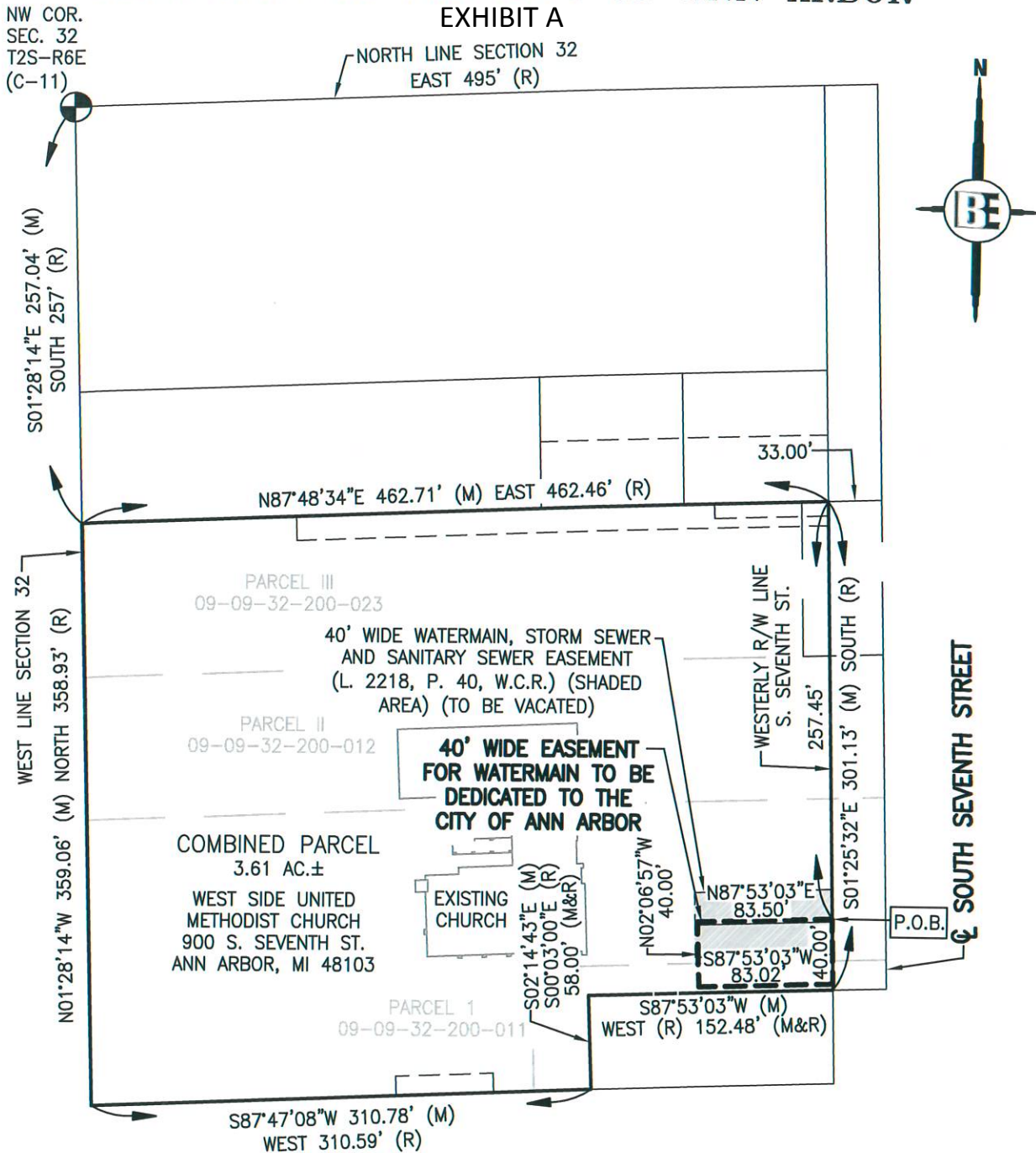


40' WIDE WATERMAIN EASEMENT TO BE DEDICATED TO THE CITY OF ANN ARBOR

EXHIBIT A



DESCRIPTION:

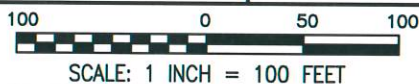
PART OF THE NORTHWEST 1/4 OF SECTION 32, T2N-R6E, CITY OF ANN ARBOR, WASHTENAW COUNTY, MICHIGAN



BEBOSS Engineering
 Engineers Surveyors Planners Landscape Architects
 3121 E. GRAND RIVER AVE.
 HOWELL, MI. 48843
 800.246.6735 FAX 517.548.1670



CLIENT:
 WEST SIDE UNITED
 METHODIST CHURCH



- LEGEND**
 ○ = IRON SET
 ● = IRON FOUND
 ⊙ = MONUMENT FOUND
 * = FENCE
 (R) = RECORDED
 (M) = MEASURED

JOB NO. 15-091	DATE	8-28-15	9-29-15	10-12-15
SHEET 1 OF 2	FB	CREW	DR. AEB	CK.

G:\15-091\dwg\15-091_WM-EA.dwg, 10/12/2015 4:33:59 PM, andy *CJF*