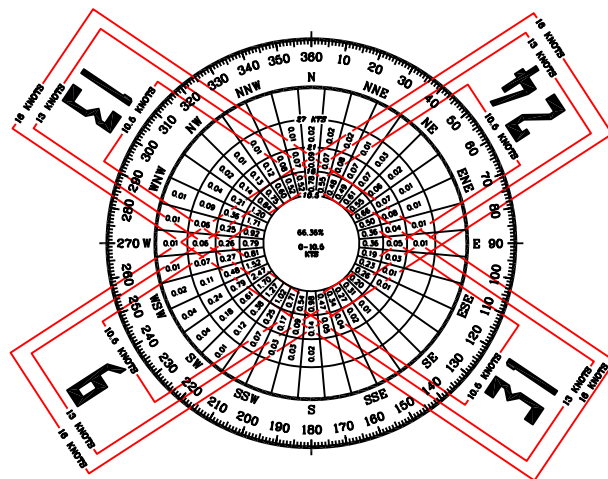


MODIFICATIONS TO FAA DESIGN STANDARDS

DATE OF FAA LETTER	DESCRIPTION
MARCH 27, 1995	CATEGORY C APPROACH MINIMA GRANDFATHERED FAA AIRSPACE NO. 92-AGL-698-NRA
	TAXIWAY WIDTH AT 30', NOT STANDARD 35'
	NORTHEAST FBO HANGAR ATCT LINE OF SITE TO END OF PARALLEL TAXIWAY
MARCH 27, 1995	TWO T-HANGARS IN NORTHEAST CORNER OF AIRPORT ATCT LINE OF SITE TO END OF PARALLEL TAXIWAY

AIRPORT DATA TABLE

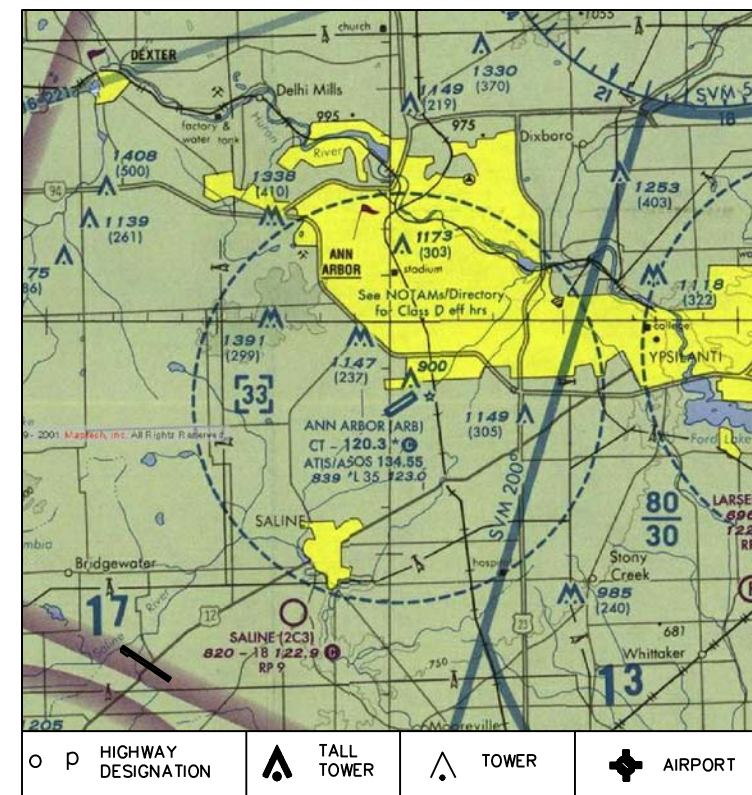
COUNTY:	WASHTENAW	TOWNSHIP:	PITTSFIELD	TOWN:	T 3 S
MEAN MAXIMUM TEMPERATURE:	83°F	JULY	RANGE:	R 6 E	
AIRPORT REFERENCE POINT:	LAT: 42°13'20.67" N.	LONG: 83°44'47.82" W			
AIRPORT REFERENCE CODE:	ARB				
AIRPORT ELEVATION (MSL)	EXISTING	829	FUTURE	829	
AIRPORT AND TERMINAL NAVAIDS	ROTATING BEACON VOR, ATCT, ASOS		ROTATING BEACON VOR, ATCT, ASOS		
SERVICE LEVEL	GENERAL AVIATION		GENERAL AVIATION		
AIRPORT ROLE	GENERAL UTILITY		GENERAL UTILITY		
APPROACH CATEGORY	B		B		
AIRPLANE DESIGN GROUP	II		II		



STATION : DETROIT METROPOLITAN AIRPORT
 PERIOD : 1/82 TO 1/89
 OBSERVATIONS: 94,847

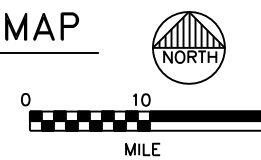
WIND COVERAGE SUMMARY

	10.5 KNOTS	13 KNOTS	16 KNOTS
RUNWAY 6-24	88.30%	94.10%	98.50%
RUNWAY 13-31	81.80%	88.80%	--
COMBINED COVERAGE	96.90%	99.20%	--



LOCATION MAP

SCALE: 1:500,000

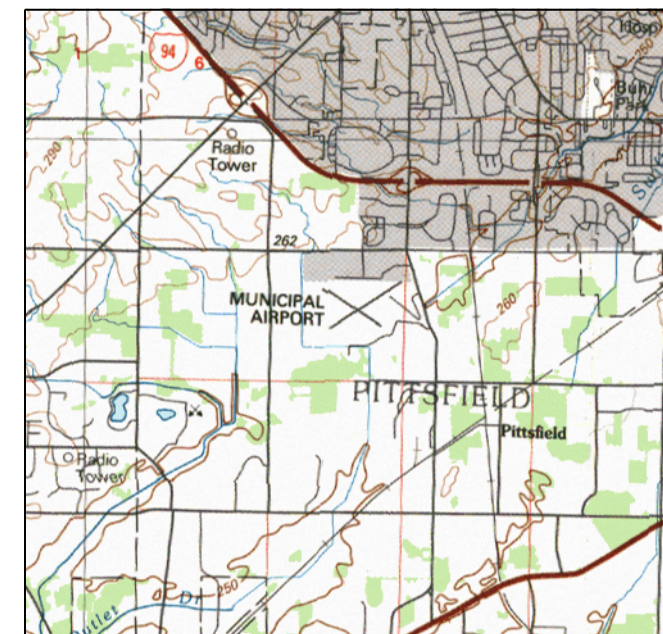


RUNWAY AND APPROACH DATA

RUNWAY	6		24		12		30	
	EXISTING	FUTURE	EXISTING	FUTURE	EXISTING	FUTURE	EXISTING	FUTURE
RUNWAY LENGTH	3505'	4300'	3505'	4300'	2750'	2750'	2750'	2750'
RUNWAY WIDTH	75'	75'	75'	75'	110'	110'	110'	110'
DISPLACED THRESHOLD	--	--	--	--	--	--	--	--
EFFECTIVE LANDING LENGTH	3505'	4300'	3505'	4300'	2750'	2750'	2750'	2750'
EFFECTIVE TAKEOFF LENGTH	3505'	4300'	3505'	4300'	2750'	2750'	2750'	2750'
TORA	--	--	--	--	--	--	--	--
TODA	--	--	--	--	--	--	--	--
ASDA	--	--	--	--	--	--	--	--
LDA	--	--	--	--	--	--	--	--
STOPWAY	--	--	--	--	--	--	--	--
CLEARWAY	--	--	--	--	--	--	--	--
RUNWAY CATEGORY	NON-PRECISION	NON-PRECISION	NON-PRECISION	NON-PRECISION	UTILITY	UTILITY	UTILITY	UTILITY
RUNWAY GRADIENT	0.17%	0.17%	0.17%	0.17%	0.61%	0.61%	0.61%	0.61%
PAVEMENT TYPE	CONCRETE	CONCRETE	CONCRETE	CONCRETE	TURF	TURF	TURF	TURF
PAVEMENT STRENGTH:	SW 45	SW 45	SW 45	SW 45	NONE	NONE	NONE	NONE
GEAR/LOAD(X 1000)	DW 70	DW 70	DW 70	DW 70	NONE	NONE	NONE	NONE
RUNWAY LIGHTING	MIRL	MIRL	MIRL	MIRL	NONE	NONE	NONE	NONE
RUNWAY MARKING	N.P.I.	N.P.I.	N.P.I.	N.P.I.	NONE	NONE	NONE	NONE
NAVIGATIONAL AIDS	PAPI ROT. BEACON SEG. CIRCLE REIL	PAPI ROT. BEACON SEG. CIRCLE REIL	VASI AIR C90-1 SEG. CIRCLE	PAPI ROT. BEACON SEG. CIRCLE	ROT. BEACON SEG. CIRCLE	ROT. BEACON SEG. CIRCLE	ROT. BEACON SEG. CIRCLE	ROT. BEACON SEG. CIRCLE
APPROACH LIGHTING	-	-	ODALS	ODALS	NONE	NONE	NONE	NONE
AIRCRAFT APPROACH CATEGORY	B	B	B	B	B	B	B	B
AIRPLANE DESIGN GROUP	II	II	II	II	I	I	I	I
CRITICAL AIRCRAFT	BEECH KING AIR C90-1	CESSNA CITATION II	BEECH KING AIR C90-1	CESSNA CITATION II	CESSNA 172	CESSNA 172	CESSNA 172	CESSNA 172
APPROACH	NON-PRECISION RNAV(GPS)/VOR	NON-PRECISION RNAV(GPS)/VOR	NON-PRECISION RNAV(GPS)/VOR	NON-PRECISION RNAV(GPS)/VOR	VISUAL	VISUAL	VISUAL	VISUAL
RPZ	500' x 700' x 1000'	500' x 700' x 1000'	500' x 700' x 1000'	500' x 700' x 1000'	250' x 450' x 1000'	250' x 450' x 1000'	250' x 450' x 1000'	250' x 450' x 1000'
APPROACH RATIO FAR PART 77	20:1	34:1	20:1	34:1	20:1	20:1	20:1	20:1
APPROACH VISIBILITY MINIMUMS	1 MILE	1 MILE	1 MILE	1 MILE	VISUAL	VISUAL	VISUAL	VISUAL
RUNWAY END COORDINATE (NAD 83)	LAT: N 42°13'12.88" LONG: W 83°45'00.38"	LAT: N 42°13'07.46" LONG: W 83°45'10.61"	LAT: N 42°13'32.97" LONG: W 83°44'22.45"	LAT: N 42°13'32.11" LONG: W 83°44'24.07"	LAT: N 42°13'29.3" LONG: W 83°45'04.0"	LAT: N 42°13'29.3" LONG: W 83°45'04.0"	LAT: N 42°13'14.8" LONG: W 83°44'33.1"	LAT: N 42°13'14.8" LONG: W 83°44'31.1"

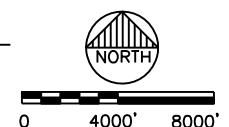
EX. RUNWAY COORDINATES ARE FROM 2005 NOAA APPROACH SURVEY

ODALS - OMNI-DIRECTIONAL APPROACH LIGHTING SYSTEM



VICINITY MAP

SCALE: 1"=4000'



DATE	ISSUED FOR
12/17/07	MOOT DRAFT REVIEW
06/27/08	AP PUBLICATION
03/21/08	FAA AIRSPACE REVIEW

D/E	JW	x	
PM	RC	x	
SOC	DR	x	
OC	WM	x	
IN	CHARGE		

GRAND RAPIDS, MI.
3600 SARGENT RD. SE.
616 574-6800

ANN ARBOR MUNICIPAL AIRPORT
 AIRPORT LAYOUT PLAN
 AIRPORT DATA SUMMARY

SITE NO.
81-1

DRAWING
2 OF 10

12940723

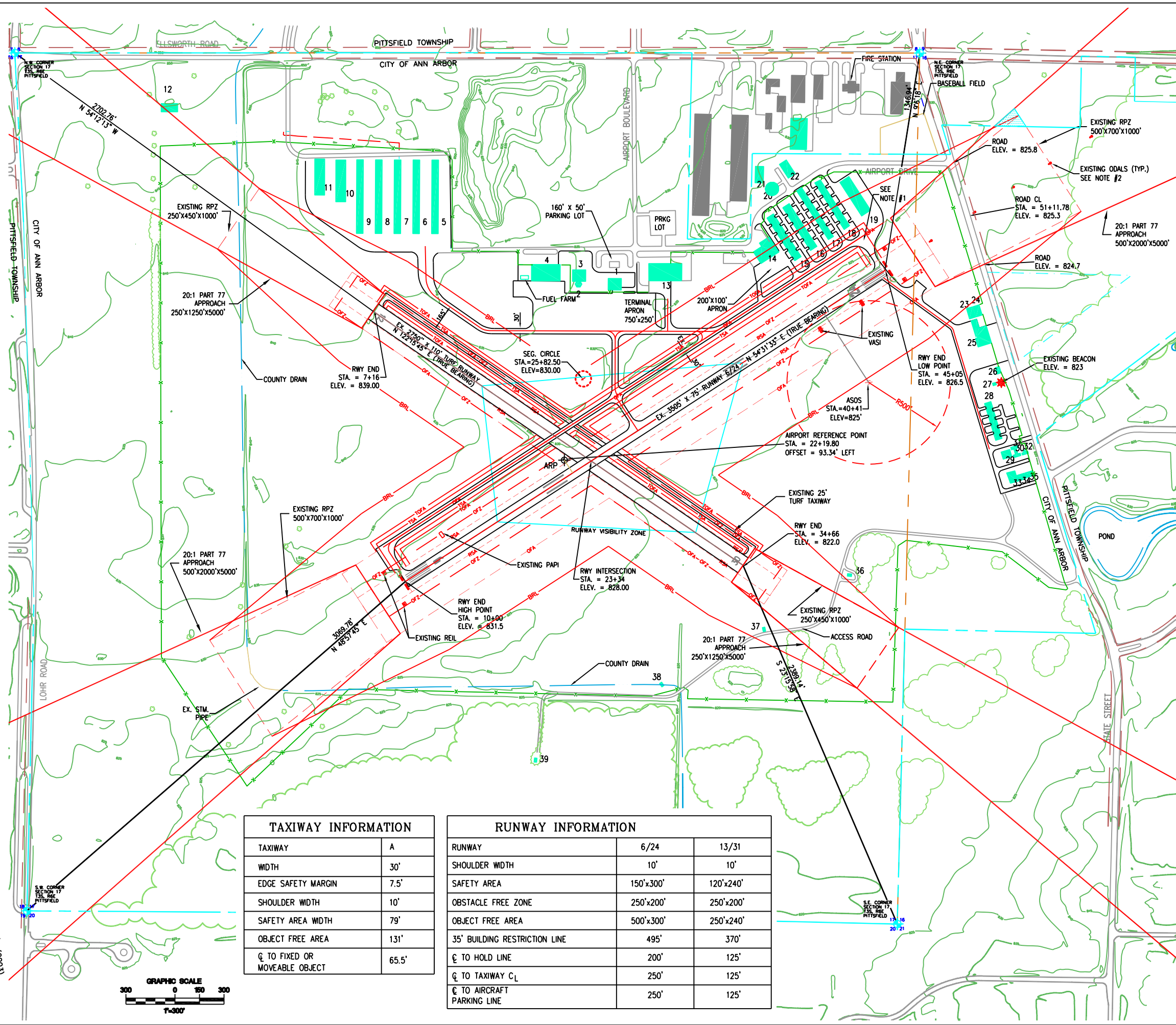
P:\12940723\PD5\01-01-op02-dato.dwg
 USGS... \Civil\usgs.dwg
 Image=P:\12940723\IMAGES\AEROCHART2.jpg
 3/26/2008 3:32 pm

BUILDING ELEVATION TABLE

NO.	DESCRIPTION	ELEVATION
1	ADMINISTRATION/TERMINAL BUILDING	849.56
2	AIR TRAFFIC CONTROL TOWER (ATCT)	893.29
3	AIR TRAFFIC ADMINISTRATION BUILDING	864.52
4	CORPORATE HANGAR (AV. GAS CO.)	866.72
5	T-HANGAR	858.03
6	T-HANGAR	857.98
7	T-HANGAR	857.12
8	T-HANGAR	857.95
9	T-HANGAR	858.01
10	T-HANGAR (NESTED)	863.58
11	T-HANGAR (NESTED)	863.56
12	BARN	894.80
13	CORPORATE HANGAR (MICHIGAN UNIVERSITY)	861.57
14	FIXED BASE OPERATION HANGAR	862.57
15	T-HANGAR	846.73
16	T-HANGAR	846.47
17	T-HANGAR	843.65
18	T-HANGAR	846.30
19	T-HANGAR (NESTED)	849.13
20	ROTATING FLOOR HANGAR	850.89
21	CONVENTIONAL HANGAR	851.15
22	CONVENTIONAL HANGAR	847.51
23	CONVENTIONAL HANGAR	838.92
24	CONVENTIONAL HANGAR	838.87
25	FIXED BASE OPERATION HANGAR	846.03
26	OFFICE BUILDING	837.91
27	CITY WATER FACILITY	823.35
28	T-HANGAR	836.39
29	CONVENTIONAL HANGAR	842.77
30	T-HANGAR	834.98
31	T-HANGAR	835.85
32	T-HANGAR	836.80
33	CONVENTIONAL HANGAR	843.80
34	CONVENTIONAL HANGAR	842.34
35	CONVENTIONAL HANGAR	841.81
36	CITY WATER FACILITY	837.20
37	CITY WATER FACILITY	837.60
38	CITY WATER FACILITY	834.09
39	CITY WATER FACILITY	836.12

LEGEND

- AIRPORT PROPERTY LINE — BM
- EASEMENT - CORNER
- SECTION LINES - CORNER
- RUNWAYS, PARKING, TAXIWAYS -
- FU. RUNWAYS, PARKING, TAXIWAYS -
- RWY PROTECTION ZONES -
- EXISTING BUILDINGS ■ EX-BUILD
- FUTURE BUILDINGS ■ FU-BUILD
- ROADS -
- FUTURE AIRPORT PROPERTY LINE -
- CENTERLINES -
- EX. RUNWAY SAFETY AREA - RSA
- EX. TAXIWAY SAFETY AREA - TSA
- EX. OBJECT FREE AREA - OFA
- EX. OBJECT FREE ZONE - OFZ
- EX. TAXIWAY OBJECT FREE AREA - TOFA
- EX. BUILDING RESTRICTION LINE - BRL
- EXISTING TREES AND TREE LINES - TREE TREELIN
- EXISTING FENCE LINE -
- EX. REIL - REIL
- EX. VASI OR PAPI - VASI / PAPI
- EX. SEGMENTED CIRCLE - SEG
- EXISTING POWER & TELEPHONE LINE - PT-PP F-PP
- RUNWAY VISIBILITY ZONE -



TAXIWAY INFORMATION

TAXIWAY	A
WIDTH	30'
EDGE SAFETY MARGIN	7.5'
SHOULDER WIDTH	10'
SAFETY AREA WIDTH	79'
OBJECT FREE AREA	131'
Ø TO FIXED OR MOVEABLE OBJECT	65.5'

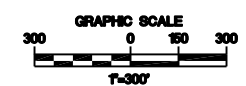
RUNWAY INFORMATION

RUNWAY	6/24	13/31
SHOULDER WIDTH	10'	10'
SAFETY AREA	150'x300'	120'x240'
OBSTACLE FREE ZONE	250'x200'	250'x200'
OBJECT FREE AREA	500'x300'	250'x240'
35' BUILDING RESTRICTION LINE	495'	370'
Ø TO HOLD LINE	200'	125'
Ø TO TAXIWAY CL	250'	125'
Ø TO AIRCRAFT PARKING LINE	250'	125'

BASE: \\c:\base.dwg
 info: \\c:\info1.dwg
 info2: \\c:\info2.dwg
 P:\12940723\PD5\01-01-op03-enst.dwg
 EXIST: \\c:\exist.dwg
 PROP: \\c:\prop.dwg
 3/31/2008 4:00 pm

NOTE #1
 TWO T-HANGARS IN NORTHEAST CORNER OF AIRPORT AND NORTHEAST FBO HANGAR OBSCURE LINE OF SITE TO END OF PARALLEL TAXIWAY

NOTE #2
 OADLS - OMNIDIRECTIONAL APPROACH LIGHTING SYSTEM



D/E	JW	X	PM	RUC	X	SOC	DR	X	OC	WMM	X	W.	MAJUNOSKI	IN	CHARGE	DATE	ISSUED FOR

GRAND RAPIDS, MI.
 2850 SPARKS DR. SE.
 49508
 616 974-8800

DPRS

ANN ARBOR MUNICIPAL AIRPORT

ANN ARBOR, MICHIGAN

AIRPORT LAYOUT PLAN
AIRPORT LAYOUT PLAN (EXISTING)

SITE NO.
81-1

DRAWING
3 OF 10

12940723

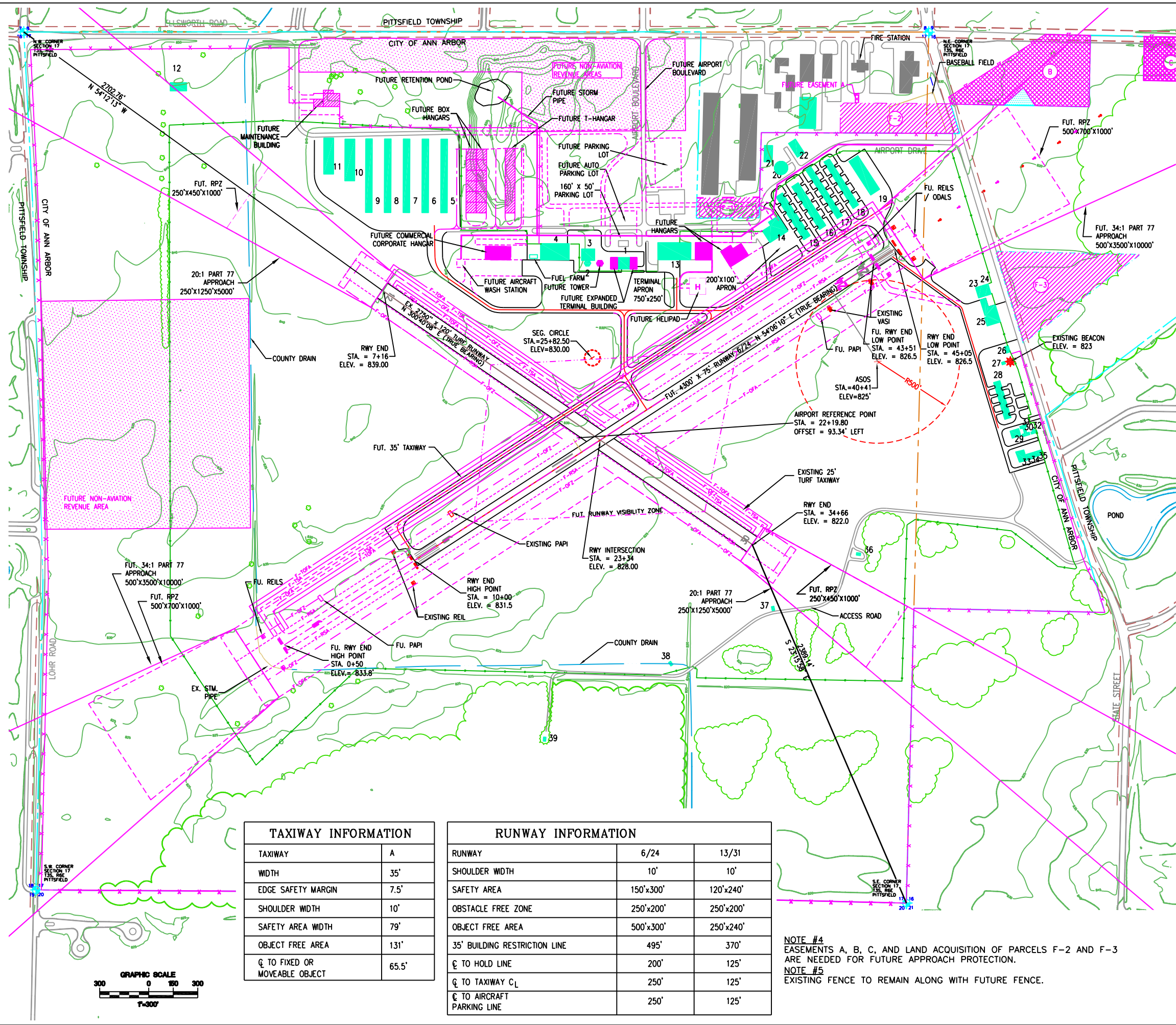
BUILDING ELEVATION TABLE

NO.	DESCRIPTION	ELEVATION
1	ADMINISTRATION/TERMINAL BUILDING	849.56
2	AIR TRAFFIC CONTROL TOWER (ATCT)	893.29
3	AIR TRAFFIC ADMINISTRATION BUILDING	864.52
4	CORPORATE HANGAR (AV. GAS CO.)	866.72
5	T-HANGAR	858.03
6	T-HANGAR	857.98
7	T-HANGAR	857.12
8	T-HANGAR	857.95
9	T-HANGAR	858.01
10	T-HANGAR (NESTED)	863.58
11	T-HANGAR (NESTED)	863.56
12	BARN	894.80
13	CORPORATE HANGAR (MICHIGAN UNIVERSITY)	861.57
14	FIXED BASE OPERATION HANGAR	862.57
15	T-HANGAR	846.73
16	T-HANGAR	846.47
17	T-HANGAR	843.65
18	T-HANGAR	846.30
19	T-HANGAR (NESTED)	849.13
20	ROTATING FLOOR HANGAR	850.89
21	CONVENTIONAL HANGAR	851.15
22	CONVENTIONAL HANGAR	847.51
23	CONVENTIONAL HANGAR	838.92
24	CONVENTIONAL HANGAR	838.87
25	FIXED BASE OPERATION HANGAR	846.03
26	OFFICE BUILDING	837.91
27	CITY WATER FACILITY	823.35
28	T-HANGAR	836.39
29	CONVENTIONAL HANGAR	842.77
30	T-HANGAR	834.98
31	T-HANGAR	835.85
32	T-HANGAR	836.80
33	CONVENTIONAL HANGAR	843.80
34	CONVENTIONAL HANGAR	842.34
35	CONVENTIONAL HANGAR	841.81
36	CITY WATER FACILITY	837.20
37	CITY WATER FACILITY	837.60
38	CITY WATER FACILITY	834.09
39	CITY WATER FACILITY	836.12

LEGEND

- AIRPORT PROPERTY LINE
- SECTION LINES
- RUNWAYS, PARKING, TAXIWAYS
- FUTURE RUNWAYS, PARKING, TAXIWAYS
- RWY PROTECTION ZONES
- PROPERTY LIMITS
- AVIGATION EASEMENTS
- SPOT ELEVATIONS
- EXISTING BUILDINGS
- FUTURE BUILDINGS
- ROADS
- UTILITY EASEMENT
- FUTURE AIRPORT PROPERTY LINE
- FUTURE EASEMENT
- CENTERLINES
- EX. RUNWAY SAFETY AREA
- EX. TAXIWAY SAFETY AREA
- EX. OBJECT FREE AREA
- EX. TAXIWAY OBJECT FREE AREA
- EX. BUILDING RESTRICTION LINE
- EXISTING TREES AND TREE LINES
- EXISTING FENCE LINE
- EX. REIL
- EX. VASI OR PAPI
- EX. SEGMENTED CIRCLE
- FUTURE ROADS
- FUT. TAXIWAY SAFETY AREA
- FUT. TAXIWAY OBJECT FREE AREA
- FUTURE RWY PROTECTION ZONES
- FUT. RUNWAY SAFETY AREA
- FUT. OBJECT FREE AREA
- FUTURE CENTERLINES
- EXISTING POWER & TELEPHONE LINE
- FUT. FENCE

NOTE #3
 RUNWAY 24 END TO BE SHORTENED BY 154 LFT TO PROVIDE 15' CLEARANCE FOR THE FUTURE 34:1 APPROACH OVER STATE STREET. EXISTING 154' OF RUNWAY PAVEMENT AND CONNECTORS TO BE REMOVED AND REPLACED WITH NEW CONNECTORS AT THE END OF THE SHORTENED RUNWAY. EXISTING ODALS WILL BE RELOCATED FOR NEW RUNWAY END.



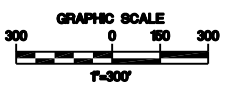
TAXIWAY INFORMATION

TAXIWAY	A
WIDTH	35'
EDGE SAFETY MARGIN	7.5'
SHOULDER WIDTH	10'
SAFETY AREA WIDTH	79'
OBJECT FREE AREA	131'
Q TO FIXED OR MOVEABLE OBJECT	65.5'

RUNWAY INFORMATION

RUNWAY	6/24	13/31
SHOULDER WIDTH	10'	10'
SAFETY AREA	150'x300'	120'x240'
OBSTACLE FREE ZONE	250'x200'	250'x200'
OBJECT FREE AREA	500'x300'	250'x240'
35' BUILDING RESTRICTION LINE	495'	370'
Q TO HOLD LINE	200'	125'
Q TO TAXIWAY C _L	250'	125'
Q TO AIRCRAFT PARKING LINE	250'	125'

NOTE #4
 EASEMENTS A, B, C, AND LAND ACQUISITION OF PARCELS F-2 AND F-3 ARE NEEDED FOR FUTURE APPROACH PROTECTION.
NOTE #5
 EXISTING FENCE TO REMAIN ALONG WITH FUTURE FENCE.



P:\12940723\PD5\01-01-op04-fut.dwg
 2/29/2008 2:52 pm
 info=..._civl\info2.dwg
 FU=..._civl\fu2.dwg
 BASE=..._civl\base.dwg
 info=..._civl\vr34.dwg
 PRDP=..._civl\prop.dwg
 info=..._civl\info1.dwg

DRS

ANN ARBOR, MICHIGAN
 AIRPORT LAYOUT PLAN
 AIRPORT LAYOUT PLAN (FUTURE)

SITE NO. 81-1

DRAWING 4 OF 10

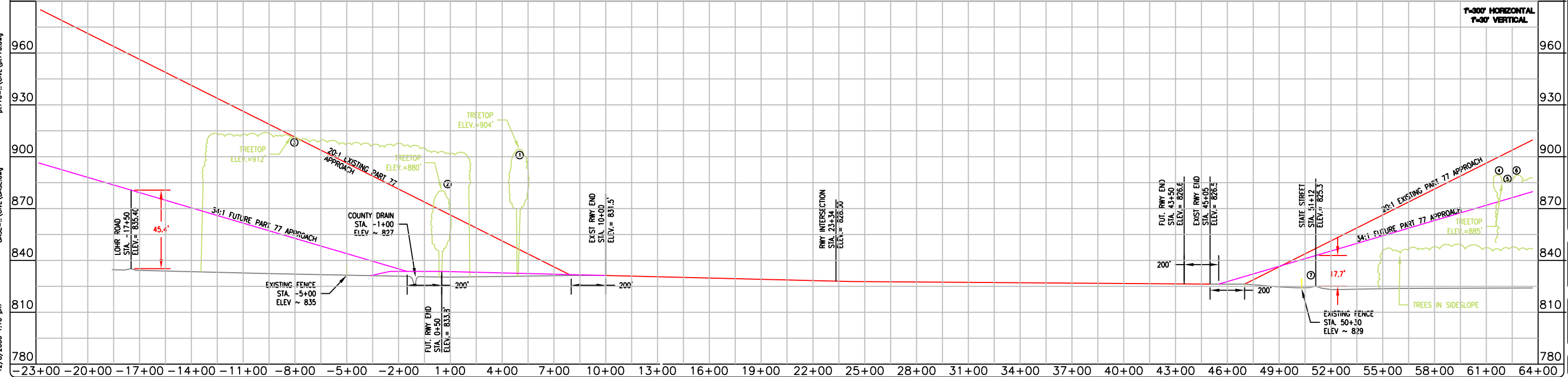
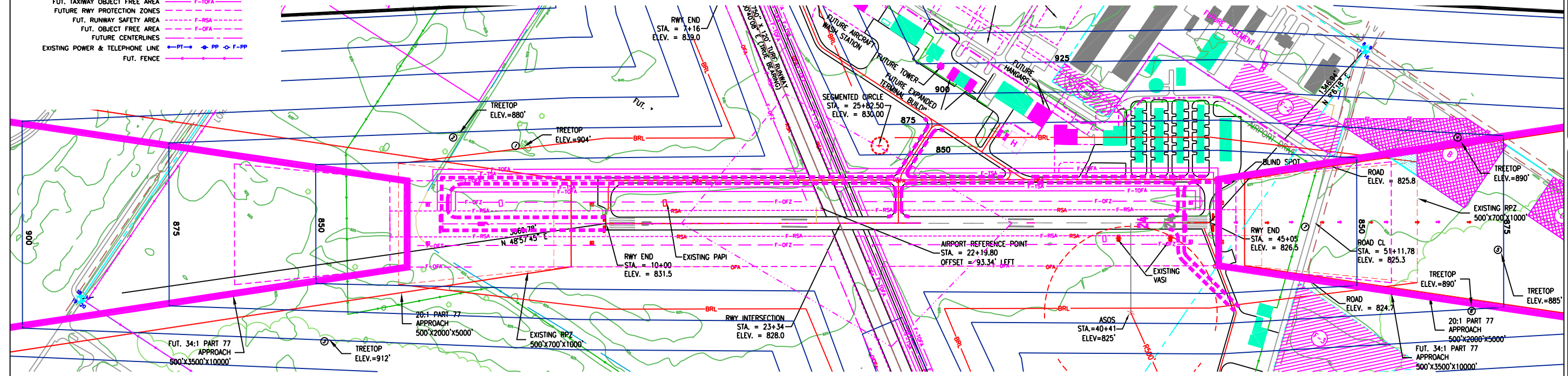
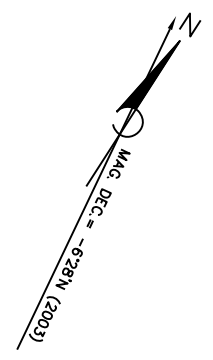
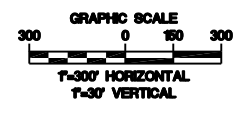
12940723

DATE: 12/17/07
 ISSUED FOR: []
 IN CHARGE: W. MALINOWSKI
 DRAWN BY: W. MALINOWSKI
 CHECKED BY: []
 APPROVED BY: []
 PUBLISHED BY: []
 DATE: 06/27/08
 PLOT PUBLICATION: 06/27/08
 PLOT DATE: 06/27/08

- LEGEND**
- AIRPORT PROPERTY LINE
 - SECTION LINES
 - RUNWAYS, PARKING, TAXIWAYS
 - FU. RUNWAYS, PARKING, TAXIWAYS
 - RWY PROTECTION ZONES
 - PROPERTY LIMITS
 - AVIGATION EASEMENT
 - SPOT ELEVATIONS
 - EXISTING BUILDINGS
 - FUTURE BUILDINGS
 - ROADS
 - UTILITY EASEMENT
 - FUTURE AIRPORT PROPERTY LINE
 - FUTURE EASEMENT
 - CENTERLINES
 - EX. RUNWAY SAFETY AREA
 - EX. TAXIWAY SAFETY AREA
 - EX. OBJECT FREE AREA
 - EX. TAXIWAY OBJECT FREE AREA
 - EX. BUILDING RESTRICTION LINE
 - EXISTING TREES AND TREE LINES
 - EXISTING FENCE LINE
 - EX. REIL
 - EX. VASI OR PAPI
 - EX. SEGMENTED CIRCLE
 - FUTURE ROADS
 - FUT. TAXIWAY SAFETY AREA
 - FUT. TAXIWAY OBJECT FREE AREA
 - FUTURE RWY PROTECTION ZONES
 - FUT. RUNWAY SAFETY AREA
 - FUT. OBJECT FREE AREA
 - FUTURE CENTERLINES
 - EXISTING POWER & TELEPHONE LINE
 - FUT. FENCE

OBSTRUCTION TABLE									
NO	TYPE	TOP ELEV	MAX. ELEV.		PENETRATION		PROPOSED DISPOSITION		
			EX.	FUT.	EX.	FUT.			
1	TREES	904'	882'	**	862'	**	22'	42'	REMOVE
2	TREES	880'	900'	**	868'	**		12'	REMOVE
3	TREES	912'	933'	**	900'	**		12'	REMOVE
4	TREES	890'	896'	**	867'	**		23'	REMOVE
5	TREES	885'	900'	**	874'	**		11'	REMOVE
6	TREES	890'	902'	**	870'	**		20'	REMOVE

** IN SIDE OR TRANSITIONAL SLOPE



P:\M104513\POST\81-01-APP06-RFP.dwg
 J:\mduin
 12/8/2006 1:16 pm
 GR34-... \UTIL\GR34.dwg
 app-6-24-... \CML\app-6-24_Ext800.dwg
 pt77a-... \CML\pt77a.dwg
 PRP-... \CML\prop.dwg
 BASE-... \CML\BASE.dwg

DATE	ISSUED FOR
12/17/07	MOO DRAE REVIEW
03/21/08	FAM INSPECTION REVIEW
06/27/08	A/P PUBLICATION

D/E	JW	X
PM	RC	X
SOC	DR	X
OC	WM	X

IN CHARGE

W. MALINOWSKI
 3850 SHERBOURNE BL. #2
 ANN ARBOR, MI 48106
 734-769-8800



ANN ARBOR, MICHIGAN

ANN ARBOR MUNICIPAL AIRPORT
 AIRPORT LAYOUT PLAN
 RUNWAY APPROACH ZONE DRAWING (RWY 6/24)

SITE NO.
81-1

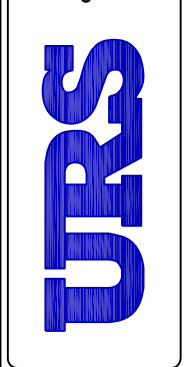
DRAWING
6 OF 10

12940723

NO.	DATE	ISSUED FOR

D/E	JW	X	PM	R/C	X	SOC	DR	X	OC	WM	X

W. MALINOWSKI
 IN CHARGE



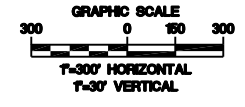
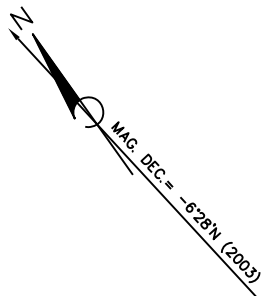
ANN ARBOR, MICHIGAN

AIRPORT LAYOUT PLAN

RUNWAY APPROACH ZONE DRAWING (RWY 13/31)

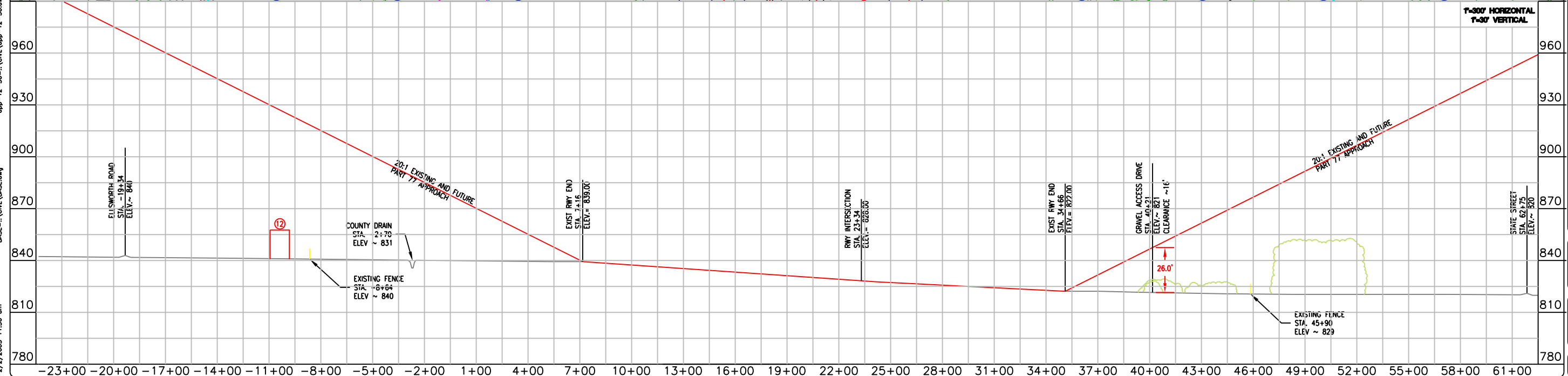
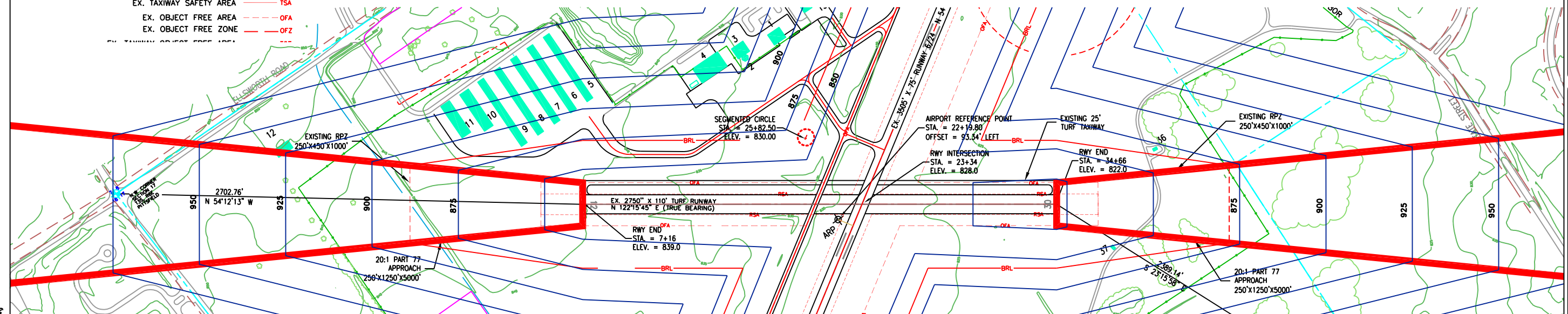
ANN ARBOR MUNICIPAL AIRPORT

SITE NO.
 81-1
DRAWING
 7 OF 10
 12940723



NOTE:
 RWY 13/31 APPROACHES WERE SURVEYED IN 2003, NO OBSTRUCTIONS OBSERVED.

- LEGEND**
- AIRPORT PROPERTY LINE
 - EASEMENT
 - SECTION LINES
 - RUNWAYS, PARKING, TAXIWAYS
 - FU. RUNWAYS, PARKING, TAXIWAYS
 - RWY PROTECTION ZONES
 - EXISTING BUILDINGS
 - FUTURE BUILDINGS
 - ROADS
 - FUTURE AIRPORT PROPERTY LINE
 - CENTERLINES
 - EX. RUNWAY SAFETY AREA (RSA)
 - EX. TAXIWAY SAFETY AREA (TSA)
 - EX. OBJECT FREE AREA (OFA)
 - EX. OBJECT FREE ZONE (OFZ)

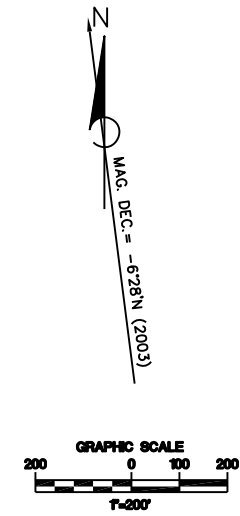


P:\104513\POS\81-01-AP07-RPZ.dwg
 J:\mduin
 2/2/2005 11:36 am
 BASE=...C:\BASE.dwg
 PRDP=...C:\VPROP.dwg
 P:\104513\POS\81-01-AP07-RPZ.dwg
 GR34=...C:\GR34.dwg
 P:\104513\POS\81-01-AP07-RPZ.dwg
 P:\104513\POS\81-01-AP07-RPZ.dwg
 P:\104513\POS\81-01-AP07-RPZ.dwg
 P:\104513\POS\81-01-AP07-RPZ.dwg

BUILDING ELEVATION TABLE		
NO.	DESCRIPTION	ELEVATION
1	ADMINISTRATION/TERMINAL BUILDING	849.56
2	AIR TRAFFIC CONTROL TOWER (ATCT)	893.29
3	AIR TRAFFIC ADMINISTRATION BUILDING	864.52
4	CORPORATE HANGAR (AV. GAS CO.)	866.72
5	T-HANGAR	858.03
6	T-HANGAR	857.98
7	T-HANGAR	857.12
8	T-HANGAR	857.95
9	T-HANGAR	858.01
10	T-HANGAR (NESTED)	863.58
11	T-HANGAR (NESTED)	863.56
12	BARN	894.80
13	CORPORATE HANGAR (MICHIGAN UNIVERSITY)	861.57
14	FIXED BASE OPERATION HANGAR	862.57
15	T-HANGAR	846.73
16	T-HANGAR	846.47
17	T-HANGAR	843.65
18	T-HANGAR	846.30
19	T-HANGAR (NESTED)	849.13
20	ROTATING FLOOR HANGAR	850.89
21	CONVENTIONAL HANGAR	851.15
22	CONVENTIONAL HANGAR	847.51
23	CONVENTIONAL HANGAR	838.92
24	CONVENTIONAL HANGAR	838.87
25	FIXED BASE OPERATION HANGAR	846.03
26	OFFICE BUILDING	837.91
27	CITY WATER FACILITY	823.35
28	T-HANGAR	836.39
29	CONVENTIONAL HANGAR	842.77
30	T-HANGAR	834.98
31	T-HANGAR	835.85
32	T-HANGAR	836.80
33	CONVENTIONAL HANGAR	843.80
34	CONVENTIONAL HANGAR	842.34
35	CONVENTIONAL HANGAR	841.81
36	CITY WATER FACILITY	837.20
37	CITY WATER FACILITY	837.60
38	CITY WATER FACILITY	834.09
39	CITY WATER FACILITY	836.12

TAXIWAY INFORMATION	
TAXIWAY	A
WIDTH	30'
EDGE SAFETY MARGIN	7.5'
SHOULDER WIDTH	10'
SAFETY AREA WIDTH	79'
OBJECT FREE AREA	131'
CL TO FIXED OR MOVEABLE OBJECT	65.5'

RUNWAY INFORMATION		
RUNWAY	6/24	13/31
SHOULDER WIDTH	10'	10'
SAFETY AREA	150'x300'	120'x240'
OBSTACLE FREE ZONE	250'x200'	250'x200'
OBJECT FREE AREA	500'x300'	250'x240'
35' BUILDING RESTRICTION LINE	495'	370'
CL TO HOLD LINE	200'	125'
CL TO TAXIWAY CL	250'	125'
CL TO AIRCRAFT PARKING LINE	250'	125'



D/E	J/V	X	X	X	X	X	X	X
PM	R/C	X	X	X	X	X	X	X
SOC	DR	X	X	X	X	X	X	X
OC	WM	X	X	X	X	X	X	X
W.	MALINOWSKI							
	IN CHARGE							
	DATE							
	ISSUED FOR							

GRAND RAPIDS, MI.
5800 SAWYER DR. SE.
49508-1011
616 974-8900

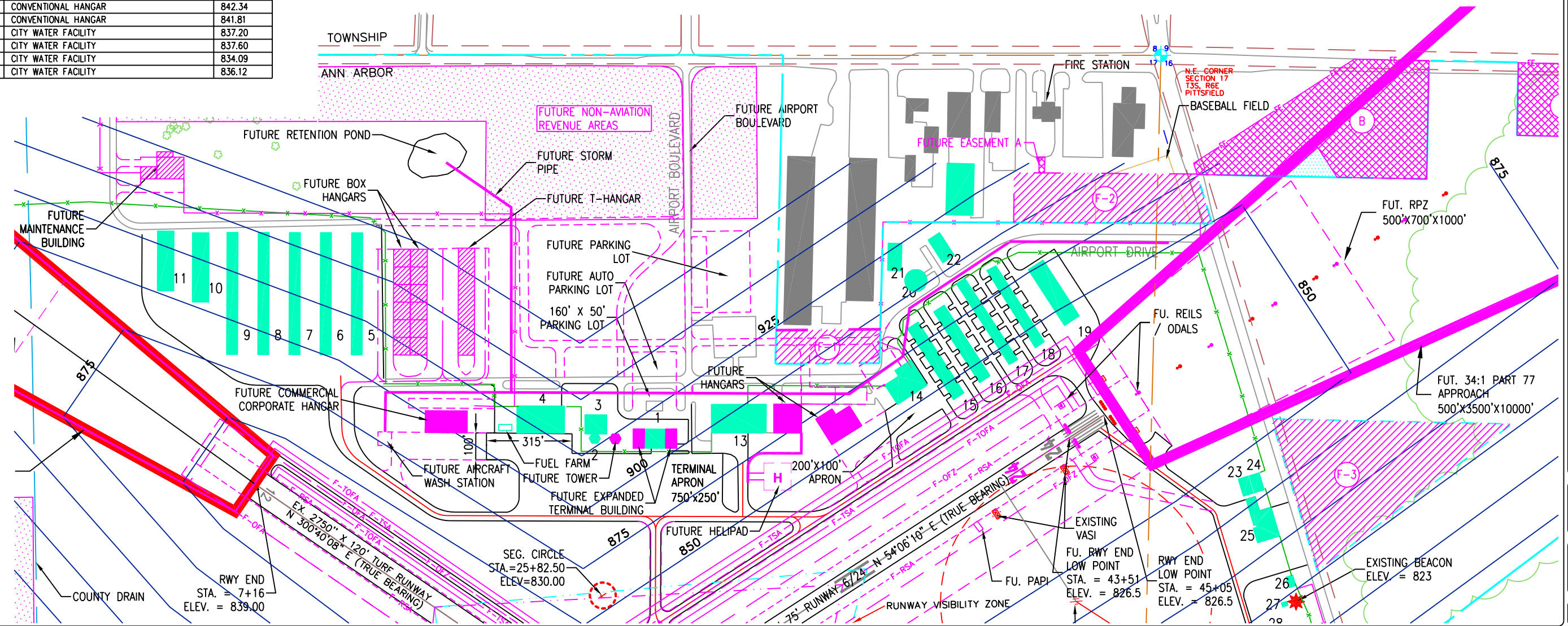
ANN ARBOR MUNICIPAL AIRPORT
AIRPORT LAYOUT PLAN
TERMINAL AREA PLAN

SITE NO.
81-1

DRAWING
8 OF 10

12940723

P:\M04813\POS\81-01-AUP08-TERM.dwg
 J:\wdbin
 1/10/2007 4:05 pm
 info:\c\d\c\1\info1.dwg
 NORTH\3\...CDETV\NORTH2.dwg
 info:\u\l\GR34.dwg
 info:\c\d\c\1\info2.dwg
 BASE\...C\B\BASE.dwg
 info:\c\d\c\1\info3.dwg
 PIT77A\...C\W\PT77A.dwg
 info:\c\d\c\1\info4.dwg
 base\...C\W\FUT2.dwg
 info:\c\d\c\1\info5.dwg
 EXIST\...C\W\EXIST.dwg



FUTURE PARCEL ACQUISITIONS

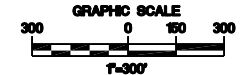
FEDERAL PROJECT NUMBER	PARCEL NUMBER	GRANTORS	DEED*	LIBER AND PAGE	RECORDED DATE	ACREAGE	NOTES *	CONTROLLING HEIGHT
-	F-1	DB WAREHOUSE LTD.	WD	00-00 00-00	00/00/00	1.09	-	-
-	F-2	PITTSFIELD TOWNSHIP	WD	00-00	00/00/00	2.94	-	-
-	F-3	CLARA SEYMOUR	WD	00-00	00/00/00	5.69	-	-
					FEE ACRES	9.72		

AE-AVIGATION EASEMENT
CJ-CONSENT JUDGMENT
E-EASEMENT
GD-GUARDIAN DEED
CE-CLEARING EASEMENT
LE-LIGHT EASEMENT
WD-WARRANTY DEED
QC-QUIT CLAIM DEED

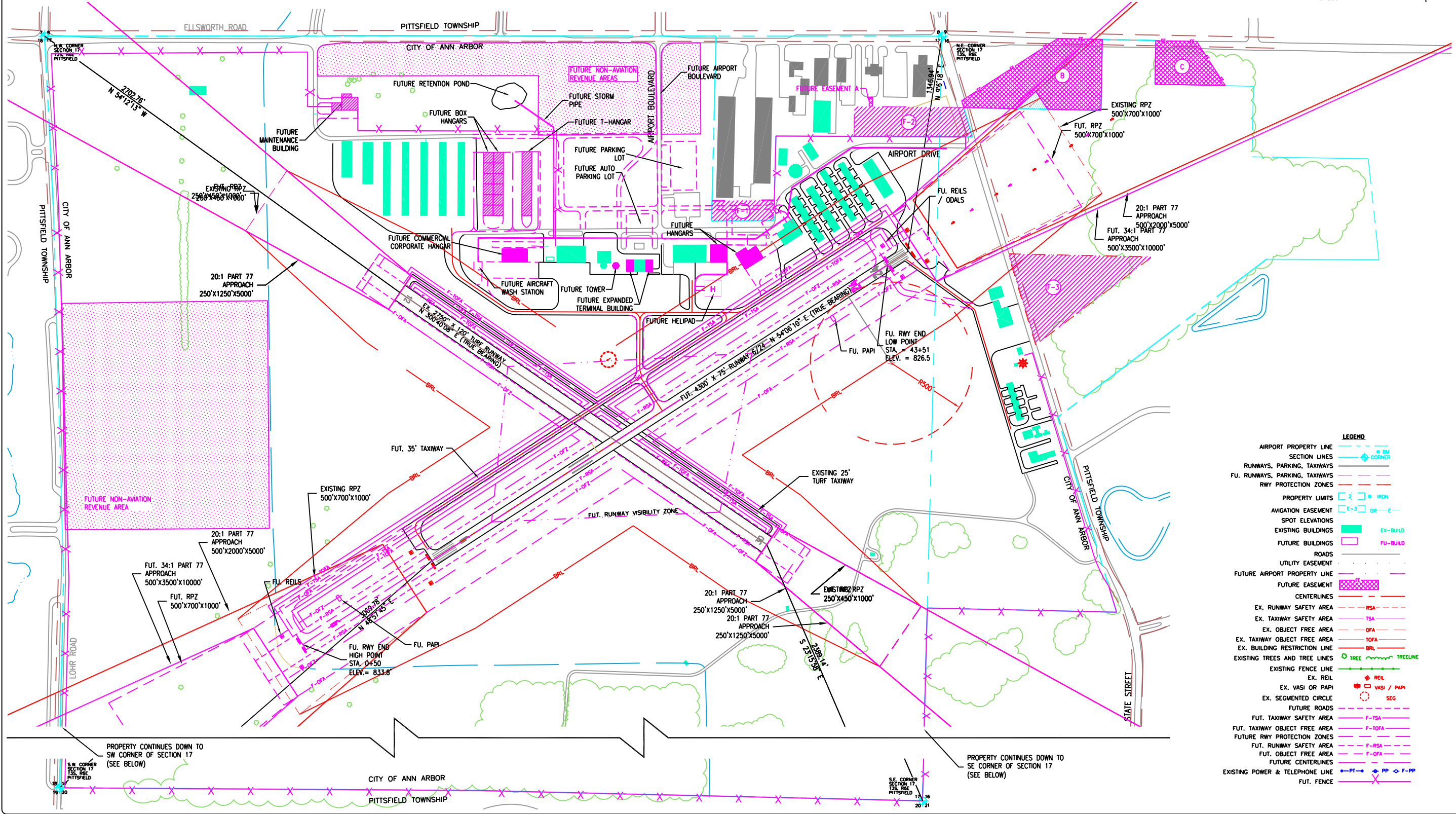
FUTURE EASEMENT INTERESTS

NO.	PARCEL	TYPE	GRANTEE	ACREAGE	LIBER-PAGE	RECORDED DATE	NOTES
A	-	EE EASEMENT	PITTSFIELD TOWNSHIP	0.028	00-00	00/00/00	FIRE STATION ACCESS
B	-	AE EASEMENT	PITTSFIELD TOWNSHIP	5.98	00-00	00/00/00	34:1 APPROACH EASEMENT
C	-	AE EASEMENT	PITTSFIELD TOWNSHIP	2.12	00-00	00/00/00	34:1 APPROACH EASEMENT
				8.128	TOTAL ACREAGE		

DE - DRAINAGE EASEMENT
EE - ACCESS EASEMENT
AE - AVIGATION EASEMENT



N
MAG. DEC. = -6°28'N. (2003)



DATE	ISSUED FOR
12/17/07	MOO DRAFT REVIEW
06/27/08	FAW RESPONSE REVIEW
06/27/08	A/P PUBLICATION
06/27/08	AP PUBLICATION

IN CHARGE	DATE
W. MALINOWSKI	

GRAND RAPIDS, MI.
3600 SARGENT DR. S.E.
616 974-6900

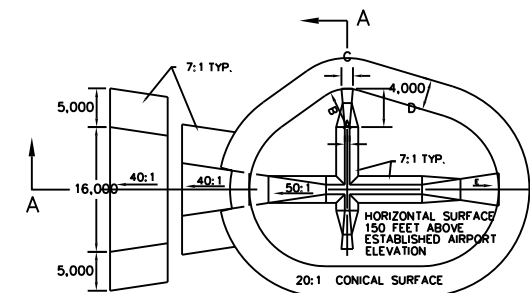
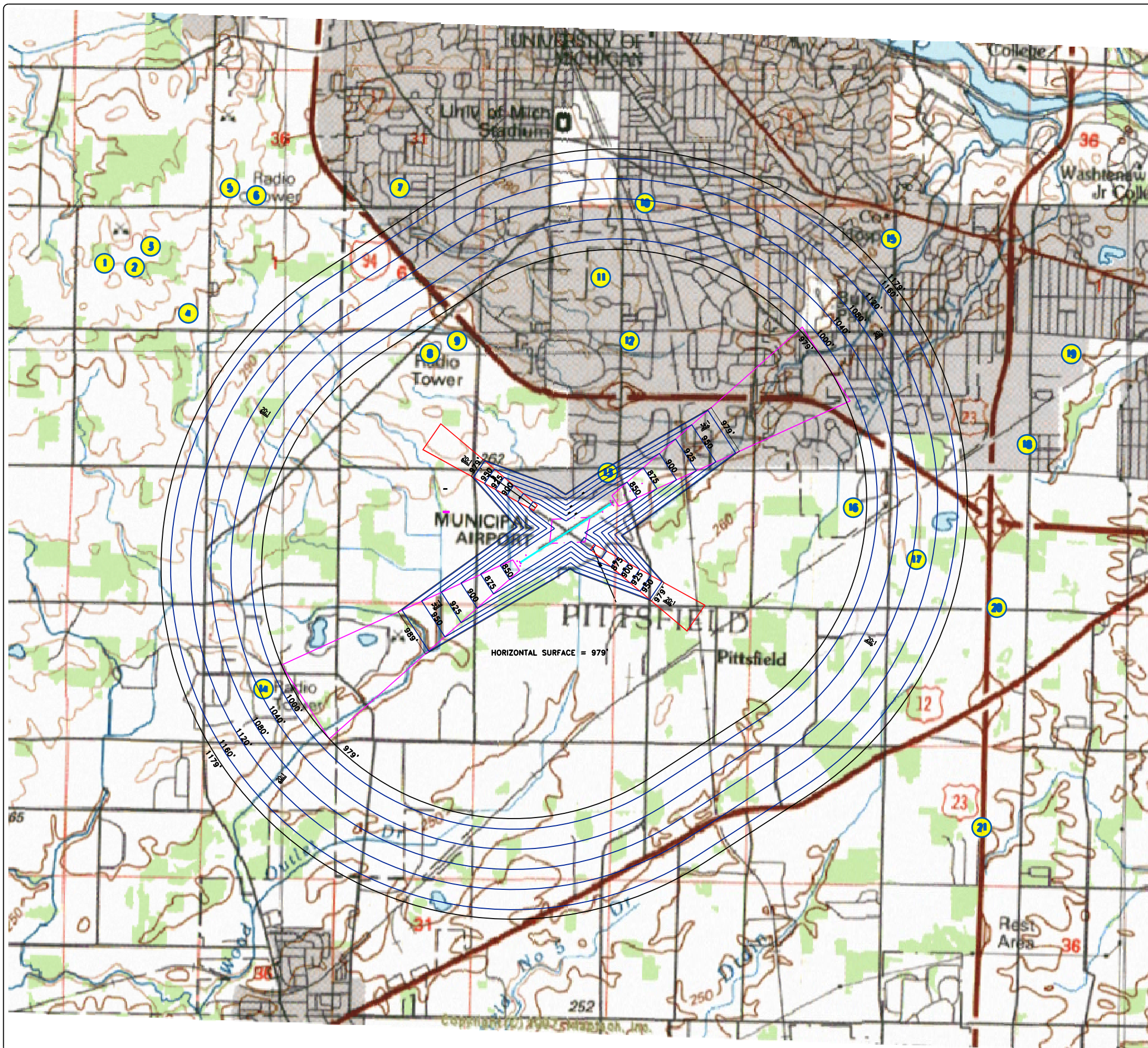


ANN ARBOR MUNICIPAL AIRPORT
ANN ARBOR, MICHIGAN
AIRPORT LAYOUT PLAN
AIRPORT PROPERTY PLAN

SITE NO.
81-1
DRAWING
9 OF 10
12940723

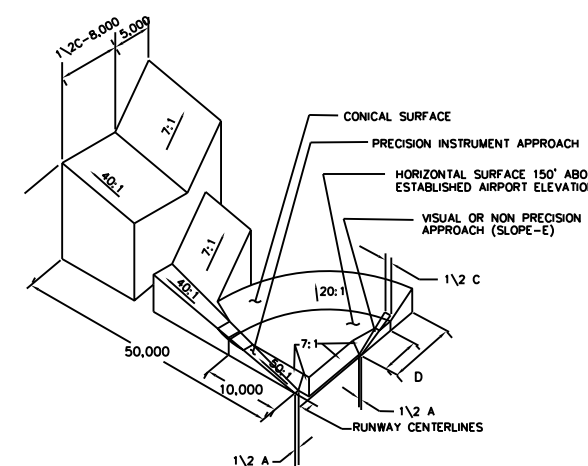
P:\M104513\PROJ\81-01-AUP08-PROP\81-01-AUP08-PROP.dwg
BASE=P:\M104513\CIVIL\BASE.dwg
EXIST=...CIVIL\EXIST.dwg
PROP=...CIVIL\PROP.dwg
5/5/2004 8:57 am
A:\druin

P:\12940723\PD5\01-01-op10-p177.dwg
 jan_von_duinen 3/26/2008 3:43 pm



DIM	ITEM	DIMENSIONAL STANDARDS (FEET)				
		VISUAL RUNWAY		NON-PRECISION INSTRUMENT RUNWAY		PRECISION INSTRUMENT RUNWAY
		A	B	A	B	
A	WIDTH OF PRIMARY SURFACE AND APPROACH SURFACE WIDTH AT INNER END	250	500	500	500	1,000
B	RADIUS OF HORIZONTAL SURFACE	5,000	5,000	5,000	10,000	10,000
C	APPROACH SURFACE WIDTH AT END	1,250	1,500	2,000	3,500	4,000
D	APPROACH SURFACE LENGTH	5,000	5,000	5,000	10,000	10,000
E	APPROACH SLOPE	20:1	20:1	20:1	34:1	34:1

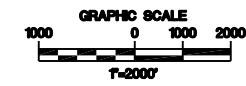
A- UTILITY RUNWAYS
 B- RUNWAYS LARGER THAN UTILITY
 C- VISIBILITY MINIMUMS GREATER THAN 3/4 MILE
 D- VISIBILITY MINIMUMS AS LOW AS 3/4 MILE
 * PRECISION INSTRUMENT APPROACH SLOPE IS 50:1 FOR INNER 10,000 FEET AND 40:1 FOR AN ADDITIONAL 40,000 FEET



ESTABLISHED AIRPORT EL.= 829'
 AIRPORT REFERENCE POINT

LAT: 42°13'20.67" N
 LONG: 83°44'47.82" W

TOWERS		
NO.	AGL	AMSL
1	210	1282
2	210	1282
3	299	1391
4	222	1222
5	118	1181
6	279	1319
7	274	1240
8	237	1147
9	185	1079
10	107	950
11	165	1062
12	100	939
13	70	900
14	174	1029
15	100	930
16	240	1090
17	197	1047
18	250	1088
19	190	1015
20	305	1149
21	189	1021



D/E	JW	x	PM	RIC	x	SOC	DR	x	OC	WMM	x	W.	MAJNOWSKI	IN	CHARGE	DATE	ISSUED	FOR

GRAND RAPIDS, MI.
 3630 SAWYER DR. SE.
 616 574-8800

ANN ARBOR MUNICIPAL AIRPORT
 AIRPORT LAYOUT PLAN
 FAR PART 77 APPROACH SURFACES DRAWING

SITE NO.
81-1

DRAWING
10 OF 10

12940723