

premier POWER MAINTENANCE



Summary of Qualifications

City of Ann Arbor
RFP 23-33



WWW.PREMIERPOWERMAINTENANCE.COM

“Integrity, Skill, Teamwork”

premier POWER MAINTENANCE

Premier Power Maintenance is the leader in high voltage electrical construction, preventative maintenance, acceptance testing and commissioning since its inception in 1985. We are the testing and maintenance expert that refineries, pipelines, utilities, steel mills, hospitals, industrial facilities, and mining operations throughout the United States rely upon.

Headquartered in Indianapolis, IN, Premier Power Maintenance's 45,000 square-foot state-of-the-art facility has the space to perform every type of electrical apparatus maintenance, repair or retrofit scope required by our customer base (up to 72kV in the shop). We also have Service Centers in Brighton, MI, Louisville, KY, Ashland, KY, Decatur, AL, and Minneapolis, MN and satellite offices in Crawfordsville, IN and Blytheville, AR. Premier Power Maintenance has over 100 NETA certified technicians located in ten different states. Providing expertise and technician availability to our customers throughout the Midwest and beyond.

Premier Power Maintenance is a NETA Accredited Company, possessing the necessary expertise to provide field testing services on any electrical equipment from 480V to 765kV. The InterNational Electrical Testing Association (NETA) establishes standards, sets specifications, and accredits testing companies; certifying technicians and their abilities. City of Ann Arbor can rest-assured, PPM technicians can execute the expected scope(s) of work.

Premier Power Maintenance is an active member of PEARL (Professional Electrical Apparatus Reconditioning League). Senior Management of PPM is on the Board of Directors for PEARL. Premier Power Maintenance has extensive experience rebuilding and refurbishing breakers.

Premier Power Maintenance invested over six and a half million dollars (\$6.5M) in test equipment; readily available in our field service vans and offices. These include industry leading brands such as: Doble, Omicron, Vanguard, Manta, Megger, Fluke and Raytech and are calibrated yearly to insure reliability and cost savings to our customers from rental expenses. By maintaining and calibrating our own equipment reduces equipment failures and delays to our customers.

PPM also owns a large selection of specialty construction equipment, including but not limited to: Baron hot vacuum oil processors (40 GPM), Dilo SF6 gas filtering carts (Performance and Mini Series), Velcon oil pumps, 45' man lifts, crane trucks, welders, squirt booms, and insulated boom trucks for use within substation construction, transformer dress out and SF6 breaker assembly.

WWW.PREMIERPOWERMAINTENANCE.COM

"Integrity, Skill, Teamwork"

Premier Power Maintenance can provide a 48' Mobile Apparatus Repair Shop, outfitted with an 8,000 lb. bridge crane, and specialized test equipment for nearly any outage or specialized need, including onboard power?

Utilizing the most up to date technology is a priority at Premier Power Maintenance, allowing all of our technicians' access to the best and up to date test equipment; resulting in reliable and more efficient test results for our customers and technicians. We exceed the stringent reporting guidelines required by NETA, and provide detailed reports to our customers no later than two weeks from the completion of the project.

At Premier, we are dedicated to Safety and Performance. We empower all team members with the right to stop a job for a safety risk and we truly believe that we can support an environment where adequate defenses to human error can exist. Our safety culture is rooted in our Family values that truly indicates caring about every individual team member of Premier Power Maintenance. Environmental, health and safety for our team members, subcontractors, vendors, the public and customers will never be sacrificed for profitability.

Key importance's of Premier's Safety Program include:

- Weekly divisional safety meetings with all team members.
- Safety equipment investment is primary and put above the needs of all other budgets.
- Twice daily, pre-job meetings including tasks, risks, mitigation, "Job Hazard Analysis" and "Emergency Action Plan" discussions.
- Regular site audits by Premier Owners, Managers, and Directors.
- OSHA 10 (or 30 hour) TWIC, DISA/MICCS drug screening for all technicians.
- Required multi-day onboarding for all new Technicians to review the Company Safety Manual; safe work zones, NFPA70E (Arc Flash/blast), and emphasizing everyone's right to stop a job.
- Annual CPR/ First Aid training for all team members.
- Annual safety training for all potential hazards in the workplace.
- Over 40 hours of training per year, for every team member.
- **2022 "Experience Modification Rating" of .64**
- Routinely updated "Corporate Safety Manual" and "Human Performance Manual"

Premier POWER MAINTENANCE

Premier Power Maintenance employs over 100 NETA certified technicians. Premier Power Maintenance will be able to arrive onsite with 1 hour after receipt of call during normal business hours and within 2 hours if the call is received after normal business hours, holidays or weekends.

Premier Power Maintenance appreciates the opportunity to work with **City of Ann Arbor** for all your electrical maintenance and testing needs. We invite you to visit any of our local offices or our corporate office in Indianapolis. Our goal is to develop partnerships, providing the safest, best value and most talented high voltage services to your facility. We sincerely appreciate the opportunity to be of service to your organization, and If we can answer any question or provide you with any assistance, please reach out to any team member!

WWW.PREMIERPOWERMAINTENANCE.COM

“Integrity, Skill, Teamwork”

Date: June 23, 2023

City of Ann Arbor
c/o Customer Service
301 East Huron Street
Ann Arbor, MI 48107

Subject: RFP 23-33

List of References:

City of Grand Haven
Rob Shelley
1700 Eaton Drive
Grand Haven, MI 49417

City of Charlevoix
John Griffith
210 State Street
Charlevoix, MI 49720
231.547.3273

Lowell Light and Power
Casey Mier PE
127 N. Broadway St.
Lowell, MI 48331

Marquette Board of Light & Power

Brett Kyllonen
2200 Wright Street
Marquette, MI 49855
906.228.0311

City of Fort Wayne

Stephen Williams
200 E Berry Street
STE 250
Ft. Wayne, IN 46802
260-427-2684

DTE

Norm Hosford
950 N. Division St
Carson City, MI 48811
517-667-6614

Marathon Petroleum Company

Salvatore (Sam) Mascaro
1001 S. Oakwood Avenue
Detroit, MI 48217
313-348-1575

New Covert Generation

26000 77th Street
Covert, MI 49043
269-338-5404

Brandon Schrader
WW Superintendent

City of Sturgis
C: 269-503-1580
O: 269-659-7250

Email: bschrader@sturgismi.gov

City of Harbor Springs

Dan Hughey

160 Zoll Street | P.O. Box 678

Harbor Springs, MI 49740-0678

231-526-2122

electric@cityofharborsprings.com

Below is a list of similar items that PPM has recently tested:

Details
69kV, 3 Phase, Group Operated Air Break Switch
SEL-751 Feeder Protection Relay
• Locating and repairing of SF6 leak on one 138kV circuit switcher
• Replacement of six (6) 9kV station class arresters
• Thermal imaging of all electrical equipment within the substation
• Two (2) runs of 3-1000kCM CU EPR 15kV cable per phase (18 cables total)
• Ultrasound testing of the substation equipment
1 Eaton Low Voltage Switchgear with TVSS, Main-Tie-Main Configuration with Auto/Manual Switchover
10 - Feeder Breakers - Nameplate Data
1000 KVA, Instr. Book GEI-87374
1000/1150 KVA, 4160-480Y/277 Volts,
138kV Combination CT/VT Units
138kV SF6 Breaker
138kV SF6 Circuit Switcher
138kV, 3 Phase, Group Operated Air Break Switch
138kV, 3 Phase, Motor Operated Air Break Switch
138kV:12.47kV 20/26/33MVA ABB Power Transformers with LTC's
145kV Siemens Type CPV2 Circuit Switchers
15 KV Medium Voltage Vacuum Breaker
15 kVA CPT
1500 KVA, 4160-480Y/277 Volts, 5.76% Impedance
15kV 1200kVAR Padmount Capacitor Banks with Zero-Crossing Switches
15KV Lightning Arrestors
15kV Vacuum Breaker
15kV Vacuum Recloser
15kV, 1 Phase, Hook Style Switch

15kV, 1.8MVar, Capacitor Bank
15kV, 3 Phase, Group Operated Air Break Switch
15kV, 3 Phase, Motor Operated Interrupting Switch
1600 Amp Frame, 1600 Amp Sensors
2 - 12IAC77A801A Inverse Time Overcurrent Relays
2 - Load Interrupt Switches - Nameplate Data:
2 - Main Breakers - Nameplate Data:
2 - Main Breakers & 1 - Tie Breaker - Nameplate Data:
2 - Motor Control Centers
2 - Service Center Transformers - Nameplate Data
2 - Service Transformers - Nameplate Data:
20MVA, 69/13.2kV Power Transformer with LTC
230 VAC Control with Capacitor Trip Devices
300 KVA, Instr. Book GEI-87372, 77 Volts, 4.91% Impedance
33MVA, 69/13.2kV Power Transformer with LTC
37.5kVA CPT
4 - Limit-Amp Starters - Nameplate Data:
4 - Motor Control Centers
4.76 kV Max., 1200 Amperes, ML-13 Mechanism
40MVA, 138/69/13.2kV (dual voltage HV winding) Power Transformer with LTC
4160 VAC, 700 HP
4160-480Y/277 Volts, 5.79% Impedance
4160-480Y/277 Volts, 5.90% Impedance
4160-480Y/277 Volts, 5.90% Impedance
4160-480Y/277 Volts, 5.90% Impedance
480 Volts, 3 Phase, 3 Wire, 60 Hertz
480 Volts, 3 Phase, 3 Wire, 60 Hertz
480 Volts, 3 Phase, 3 Wire, 60 Hertz
480 Volts, 3 Phase, 3 Wire, 60 Hertz
48KV Lightning Arresters
5 MVA, 69KV to 4.16 KV Oil Filled Power Transformer with load tap changer.
5.1KV Lightning Arresters
500 KVA, 77 Volts, 5.90% Impedance
500 KVA, Serial No.
500 KVA, Serial No.
500 KVA, Serial No. L709213THLA
5KV three phase feeder bus cables.
6 - 12IAC77B811A Inverse Time Overcurrent Relays
600 Amp Continuous, 600 Amp Interrupting

600 Amp Continuous, 600 Amp Interrupting
69kV Circuit Switcher
69kV SF6 Breaker
69kV SF6 Breaker
69KV SF6 Circuit Breaker.
69kV Voltage Transformer
69kV Voltage Transformers Charger
69kV, 3 Phase, Group Operated Air Break Switch
69kV, 3 Phase, Motor Operated Air Break Switch
75 MVA, 138/69kV Power Transformer with LTC (2 men 12+2 men 4 LTC)
a. For inspection and test procedures see Appendix #3
AB Centerline Intellicenter
Analog Meters
ATS Switches
ATS Switches
Basler Type BE1- CDS-240 Current Differential Relay.
Basler Type BE1-11f Feeder Protection Relay
Basler Type BE1-851 Differential Transformer Back up Relay.
Breaker, ten (10) Feeder Breakers; and two (2) Motor Control Centers
buckets
CTs
Digital Meters
Double-ended G.E. AKD-6 Low Voltage
Double-ended Unit Substation with two (2) Main Breakers, one (1) Tie
East Pump Station Switchgear
Electrically Operated with Auto-Throw-Over Scheme
EPS North: 17 + Incoming Main
EPS South: 23 + Incoming Main
G.E. 7700 Line Control Center, IC7700
G.E. Distribution Transformer, Class OA
G.E. Magne-Blast 5 kV Switchgear with two (2) Main Breakers, one (1) Tie Breaker, four (4) Limit-Amp 5 kV Motor, two (2) 5 kV Transformer Primaries, two (2) Disconnect Switch, two (2) potential transformer drawers, two (2) control power transformer drawers, and two (2) Motor Control Centers.
G.E. Magne-Blast Type AM-4.16-250-9H
G.E. Oil Filled Transformer, Class OA
G.E. Oil Filled Transformer, Class OA/FA
G.E. Oil Filler Transformer, Class OA
G.E. Outdoor, 4.8 kV - 5.5 kV Max. Design

G.E. Sealed Gas Transformer, Class AA
G.E. Type AKR-5A-30, I.D. 75A712141-133-142, 800 Amp Frame, 800 Amp Sensors, Type SST Trips with L.T., S.T. AND GND Manually Operated, Instr. Book GEI-86150
G.E. Type AKR-5A-50, I.D. 75A712141-130-132
G.E. Type IC7160A118G, Cat No. 0379X0510R10
Grit De-Watering Building Motor Control Center - P7
Grit Pump Building Motor Control Center - XP2
ii. Substation 11: - Repair selector 101/201 selector switch. Blades are very tight making switch inoperable. Knife switch (Siemens, I-T-E Switchboard Type/ Cat. No. PC Series HV S.O. 17-16247-15 System 13200V)
iii. Substation 1; 3; 4; 5; 6; 8; 9; 10; 12: - Repair/ adjust mis-aligned selector switch from 101 to 201. Knife switch (Siemens, I-T-E Switchboard Type/ Cat. No. PC Series HV S.O. 17-16247-15 System 13200V)
Incoming Main
Instr. Book GEH-3091, GEH-3102, GEH-4449
Instr. Book GEI-86150
IR Scan
iv. Substation 2: - "A" pole transfer switch not making positive contact in 102 or 202 position – repair as needed for conformity. Knife switch (Siemens, I-T-E Switchboard Type/ Cat. No. PC Series HV S.O. 17-16247-15 System 13200V)
LV MCCB
Manu. Date 11/75, Instr. Book GEK-41902
MCC P10 - Trickle Filter Effluent Lift Station
MCC P13 - Sludge Thickening Tanks Bldg.
MCC P14 - Sludge Blending & Storage Tank Control Building
MCC P3 - Northwest Pump Station
MCC P6 - Phosphate Removal Control Building
MCC P6 - Phosphate Removal Control Building
MCC P7 - Grit De-Watering Building
MCC P8E – Incinerator Building
MCC P8E – Incinerator Building - Main Breaker
MCC P8W – Incinerator Building
MCC P8W – Incinerator Building - Main Breaker
MCC P9L - Incinerator Building
MCC P9L - Incinerator Building - Main Breaker
MCC P9R - Incinerator Building
MCC P9R - Incinerator Building - Main Breaker
MCC XP2 - Grit Pump Building
MCC XP3 - Sludge Blending & Storage tank Control Building

MCC XP5 - Sludge Thickening Tanks Bldg
MCC XP8 - Pre-Aeration Building
MCC XP9 - Northwest Pump Station
Meters
No. E-687866
No. L247765A-B, Instr. Book GEK-45264, GEK-5676
Northwest Pumping Station Motor Control Center - P3 & XP9
Oil Transformer – Repair sealing gasket between oil transformer and Substation switchgear. Clean/purify and recycle oil, restore correct tank oil level, restore oil tank nitrogen blanket and correct oil tank pressure.
Phosphate Removal Control Building Motor Control Center - P6
Pre-Aeration Building Motor Control Center - XP8
Pre-Aeration Building Transformer - Nameplate Data:
Quantity of three (3) VTs
Raw Sewage Pump No.1 - 700 HP
Raw Sewage Pump No.2 - 700 HP
Raw Sewage Pump No.3 - 700 HP
Raw Sewage Pump No.4 - 700 HP
Repair breaker charge/ close sequence - breaker charges and closes instantly before signal to close.
Repair selector 101/201 selector switch. Blades are very tight making switch inoperable.
Repair/ adjust mis-aligned selector switch from 101 to 201.
Siemens Medium Voltges Breakers
Siemens RL LV Breakers
Sludge Blending & Storage Tank Control Building Motor Control Center - P14 & XP3
Sludge Thickening Tanks Bldg. Motor Control Center - XP5 & P13
Square D Type VR 15kV Breakers
Switchgear
Third Avenue Bar Screen: 21 + Incoming Main
Third Avenue Main: 34 + Incoming Main
Third Avenue Pumping Station Switchgear
Transformers 13kv / 480v
Trickling Filter Effluent Lift Station Motor Control Center - P10
Two (2) G.E. Outdoor Load Interrupt Switches, two (2) G.E. Transformers
Type SST Trips with L.T., S.T. AND GND
Vacuum Filter & Incinerator Building Switchgear
VTs

Water Pollution Control - Switchgear Maintenance (T)
Westinghouse SPB-100 LV Breakers
• 4 – Schwitzer SEL-387E Differential
• 4 – Schweitzer SEL-501-2 Overcurrent
• 4 – Basler BE1-59N Ground fault 59G
• 4 – Basler BE1-59N Ground fault 59G B/U
• 4 - Schwitzer SEL-710
• 9 - Schwitzer SEL-751
• 2 - Schwitzer SEL-787
• 2 - Schwitzer SEL-411L
• 2 - Schwitzer SEL-351
• 3 – GE PVD21B Phase Differential X, Y, Z (Bus 1)
• 3 – GE PVD21B Phase Differential X, Y, Z (Bus 2)
• 4 – Beckwith M-3430 Generator Protection
• 4 – Beckwith M-3432 Generator Protection
• 4 – Basler BE1-25 Sync. Check
• 4 - Basler BE1-25A Auto sync.
• 4 – Basler BE1-51 Exciter Overcurrent

FEE PROPOSAL FORM
RFP #23-33 - WWTP Electrical Preventative Maintenance

Respondent's Name: Premier Power Maintenance

Provide Hourly Billing Rates for the following periods:

Initial Contract Term	Regular Hourly Rate Monday-Friday (7a-5p)	Overtime Hourly Rate	Sunday/Holiday Overtime Hourly Rate	Travel/Show Up Charge
Start of contract - June 30, 2024	\$155.55	\$217.60	\$264.35	\$0
July 1, 2024 - June 30, 2025	\$164.70	\$230.40	\$279.90	\$0
Optional Contract Extension Term				
July 1, 2025 - June 30, 2026	\$173.85	\$243.20	\$295.45	\$0
July 1, 2026 – June 30, 2027	\$183.00	\$256.00	\$311.00	\$0

The regular hourly rate shall be applicable during normal business hours Monday through Friday (7am – 5 pm). The overtime rate shall apply outside of normal work hours Monday through Friday, and all day on Saturday. The Sunday and Holiday hourly rate shall be applicable all day on Sunday and City observed Holidays. Please identify any exceptions to proposed hourly rates and associated time periods below:

Please append any equipment hourly costs for equipment owned by the proposing firm.

If work is performed by a subcontractor to the proposing firm, an additional markup of five percent (5%) shall be added to the fees of the subcontractor.

If repair parts, materials, permits or rental equipment are required, an additional markup of fifteen percent (15%) shall be added to those costs.

Provide the maximum anticipated response times for both standard and emergency tasks:

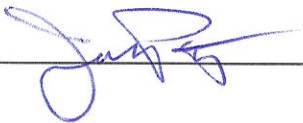
Standard Response Time (Hours): 1 hour

Emergency Response Time (Hours): 2 hours

The initial term of the contract starts upon the contract approval date and ending on June 30, 2025 with a City optional extension for an additional two (2) years. It is understood that the submitted hourly rate proposals are to be honored over the term of the contract.

The undersigned hereby declares that he/she has carefully examined the conditions of this request for proposal and will provide the services as specified for the prices set for in this proposal.

Representative's Name: Joel Potyk

Signature:  _____

Date: 06/28/23

Premier
POWER
MAINTENANCE

NETA
ACCREDITED COMPANY

PEARL
Professional Electrical Apparatus Accrediting League

GSA Schedule
Contract # GSA F2501-22-00001

Date: June 28, 2023

City of Ann Arbor
c/o Customer Service
301 East Huron Street
Ann Arbor, MI 48107

Subject: RFP 23-33

A. Authorized Negotiator

Joel Potyk
Premier Power Maintenance
7262 Kensington Road
Brighton, MI 48116
248-410-2478
Joel.potyk@premierpower.us

WWW.PREMIERPOWERMAINTENANCE.COM

“INTEGRITY, ATTITUDE, SKILL, TEAMWORK”

EXHIBIT A
Scope of Services

13.2	
Switchgear	
1	5/15kV Switchgear Bus
22	5/15kV Vacuum Breaker
2	SEL 351
20	SEL 551
4	SEL 351A
2	SEL 587Z
1	Battery System
Unit Sub 1	
2	5/15kV Switchgear Bus
2	5/15kV Switchgear Bus
2	Unit Substation Transformer (Dry Type)
2	600V Switchgear
Bus	
9	600V Air Power Breaker
Unit Sub 2	
2	5/15kV Switchgear Bus
2	5/15kV Air Switch
2	Unit Substation Transformer (Dry Type)
2	600V Switchgear
Bus	
6	600V Air Power Breaker
Unit Sub 3	
2	5/15kV Switchgear Bus
2	5/15kV Air Switch
2	Unit Substation Transformer (Dry Type)
2	600V Switchgear
Bus	
10	600V Air Power Breaker
Quantity	
Item	
Unit Sub 4	
2	5/15kV Switchgear Bus
2	5/15kV Air Switch
2	Relay 50/51 Overcurrent
2	Relay Voltage
2	Unit Substation Transformer (Dry Type)
2	600V Switchgear
Bus	
11	600V Air Power Breaker
Unit Sub 5	
2	5/15kV Switchgear Bus
2	5/15kV Air Switch
2	Unit Substation Transformer (Dry Type)
2	600V Switchgear

Bus	
22	600V Air Power Breaker
Unit Sub 6	
2	5/15kV Switchgear Bus
2	5/15kV Air Switch
	Unit Substation
	Transformer (Dry
2	Type)
	600V Switchgear
2	Bus
	600V Air Power
9	Breaker
Unit Sub 7	
	5/15kV
2	Switchgear Bus
2	5/15kV Air Switch
	Unit Substation
	Transformer (Dry
2	Type)
	600V Switchgear
2	Bus
	600V Air Power
11	Breaker
Unit Sub 8	
Quantity	
Item	
4	5/15kV Switchgear Bus
11	5/15kV Vacuum Breaker
2	5/15kV Air Switch
2	Unit Substation Transformer (Dry Type)
3	5/15kV Motor Starter
2	SEL 587Z
9	Sepam
524	
Generator Switchgear	
1	5/15kV Switchgear Bus
3	5/15kV Vacuum Breaker
1	SEL 551
1	SEL587Z
2	SEL 300G
MCC Maintenance	
4	Sub 1 Motor Control Centers
74	MCC Buckets
2	Sub 2 Motor Control Centers
82	MCC Buckets
4	Sub 3 Motor Control Centers
85	MCC Buckets
4	Sub 4 Motor Control Centers
53	MCC Buckets
6	Sub 5 Motor Control Centers
165	MCC Buckets

4	Sub 6 Motor Control Centers
124	MCC Buckets
2	Sub 7 Motor Control Centers
36	MCC Buckets

EXHIBIT B
Compensation

See Sealed Envelope

**ATTACHMENT A
CITY OF ANN ARBOR
PREVAILING WAGE DECLARATION OF COMPLIANCE**

The "wage and employment requirements" of Section 1:320 of Chapter 14 of Title I of the Ann Arbor City Code mandates that the city not enter any contract, understanding or other arrangement for a public improvement for or on behalf of the city unless the contract provides that all craftsmen, mechanics and laborers employed directly on the site in connection with said improvements, including said employees of subcontractors, shall receive the prevailing wage for the corresponding classes of craftsmen, mechanics and laborers, as determined by statistics for the Ann Arbor area compiled by the United States Department of Labor. Where the contract and the Ann Arbor City Code are silent as to definitions of terms required in determining contract compliance with regard to prevailing wages, the definitions provided in the Davis-Bacon Act as amended (40 U.S.C. 278-a to 276-a-7) for the terms shall be used. Further, to the extent that any employees of the contractor providing services under this contract are not part of the class of craftsmen, mechanics and laborers who receive a prevailing wage in conformance with section 1:320 of Chapter 14 of Title I of the Code of the City of Ann Arbor, employees shall be paid a prescribed minimum level of compensation (i.e. Living Wage) for the time those employees perform work on the contract in conformance with section 1:815 of Chapter 23 of Title I of the Code of the City of Ann Arbor.

At the request of the city, any contractor or subcontractor shall provide satisfactory proof of compliance with this provision.

The Contractor agrees:

- (a) To pay each of its employees whose wage level is required to comply with federal, state or local prevailing wage law, for work covered or funded by this contract with the City,
- (b) To require each subcontractor performing work covered or funded by this contract with the City to pay each of its employees the applicable prescribed wage level under the conditions stated in subsection (a) or (b) above.
- (c) To provide to the City payroll records or other documentation within ten (10) business days from the receipt of a request by the City.
- (d) To permit access to work sites to City representatives for the purposes of monitoring compliance, and investigating complaints or non-compliance.

The undersigned states that he/she has the requisite authority to act on behalf of his/her employer in these matters and has offered to provide the services in accordance with the terms of the wage and employment provisions of the Chapter 14 of the Ann Arbor City Code. The undersigned certifies that he/she has read and is familiar with the terms of Section 1:320 of Chapter 14 of the Ann Arbor City Code and by executing this Declaration of Compliance obligates his/her employer and any subcontractor employed by it to perform work on the contract to the wage and employment requirements stated herein. The undersigned further acknowledges and agrees that if it is found to be in violation of the wage and employment requirements of Section 1:320 of the Chapter 14 of the Ann Arbor City Code it shall have been deemed a material breach of the terms of the contract and grounds for termination of same by the City.

Premier Power Maintenance
Company Name

Penny Williams 6/16/23
Signature of Authorized Representative Date

Penny Williams HR Manager
Print Name and Title

4035 Championsh. Dr Indianapolis, IN 46248
Address, City, State, Zip

317-220-4095 penny.williams@premierpower.us
Phone/Email address

Questions about this form? Contact Procurement Office City of Ann Arbor Phone: 734/794-6500

**ATTACHMENT B
LEGAL STATUS OF OFFEROR**

(The Respondent shall fill out the provision and strike out the remaining ones.)

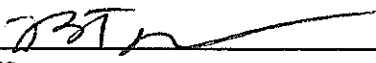
The Respondent is:

- A corporation organized and doing business under the laws of the state of Indiana, for whom Brian Templeman bearing the office title of Vice President, whose signature is affixed to this proposal, is authorized to execute contracts on behalf of respondent.*

*If not incorporated in Michigan, please attach the corporation's Certificate of Authority

- ~~• A limited liability company doing business under the laws of the State of _____ whom _____ bearing the title of _____ whose signature is affixed to this proposal, is authorized to execute contract on behalf of the LLC.~~
- ~~• A partnership organized under the laws of the State of _____ and filed with the County of _____, whose members are (attach list including street and mailing address for each.)~~
- An individual, whose signature with address, is affixed to this RFP.

Respondent has examined the basic requirements of this RFP and its scope of services, including all Addendum (if applicable) and hereby agrees to offer the services as specified in the RFP.

 Date: 6-22-23
Signature

(Print) Name Brian Templeman Title Vice President

Firm: Premier Power Maintenance

Address: 4035 Championship Drive Indianapolis, IN

Contact Phone 317-879-0660 Fax _____

Email Brian.Templeman@premierpower.us

**ATTACHMENT C
CITY OF ANN ARBOR DECLARATION OF COMPLIANCE**

Non-Discrimination Ordinance

The "non discrimination by city contractors" provision of the City of Ann Arbor Non-Discrimination Ordinance (Ann Arbor City Code Chapter 112, Section 9:158) requires all contractors proposing to do business with the City to treat employees in a manner which provides equal employment opportunity and does not discriminate against any of their employees, any City employee working with them, or any applicant for employment on the basis of actual or perceived age, arrest record, color, disability, educational association, familial status, family responsibilities, gender expression, gender identity, genetic information, height, HIV status, marital status, national origin, political beliefs, race, religion, sex, sexual orientation, source of income, veteran status, victim of domestic violence or stalking, or weight. It also requires that the contractors include a similar provision in all subcontracts that they execute for City work or programs.

In addition the City Non-Discrimination Ordinance requires that all contractors proposing to do business with the City of Ann Arbor must satisfy the contract compliance administrative policy adopted by the City Administrator. A copy of that policy may be obtained from the Purchasing Manager

The Contractor agrees:

- (a) To comply with the terms of the City of Ann Arbor's Non-Discrimination Ordinance and contract compliance administrative policy.
- (b) To post the City of Ann Arbor's Non-Discrimination Ordinance Notice in every work place or other location in which employees or other persons are contracted to provide services under a contract with the City.
- (c) To provide documentation within the specified time frame in connection with any workforce verification, compliance review or complaint investigation.
- (d) To permit access to employees and work sites to City representatives for the purposes of monitoring compliance, or investigating complaints of non-compliance.

The undersigned states that he/she has the requisite authority to act on behalf of his/her employer in these matters and has offered to provide the services in accordance with the terms of the Ann Arbor Non-Discrimination Ordinance. The undersigned certifies that he/she has read and is familiar with the terms of the Non-Discrimination Ordinance, obligates the Contractor to those terms and acknowledges that if his/her employer is found to be in violation of Ordinance it may be subject to civil penalties and termination of the awarded contract.

 Premier Power Maintenance
Company Name
 Penny Williams 6/16/23
Signature of Authorized Representative Date
 Penny Williams HR Manager
Print Name and Title
 4035 Championship Dr Indianapolis, IN 46260
Address, City, State, Zip/
 317-220-4095 penny.williams@premierpower.us.
Phone/Email address

Questions about the Notice or the City Administrative Policy, Please contact:
Procurement Office of the City of Ann Arbor
(734) 794-6500

**ATTACHMENT D
CITY OF ANN ARBOR
LIVING WAGE ORDINANCE DECLARATION OF COMPLIANCE**

The Ann Arbor Living Wage Ordinance (Section 1:811-1:821 of Chapter 23 of Title I of the Code) requires that an employer who is (a) a contractor providing services to or for the City for a value greater than \$10,000 for any twelve-month contract term, or (b) a recipient of federal, state, or local grant funding administered by the City for a value greater than \$10,000, or (c) a recipient of financial assistance awarded by the City for a value greater than \$10,000, shall pay its employees a prescribed minimum level of compensation (i.e., Living Wage) for the time those employees perform work on the contract or in connection with the grant or financial assistance. The Living Wage must be paid to these employees for the length of the contract/program.

Companies employing fewer than 5 persons and non-profits employing fewer than 10 persons are exempt from compliance with the Living Wage Ordinance. If this exemption applies to your company/non-profit agency please check here No. of employees _____

The Contractor or Grantee agrees:

- (e) To pay each of its employees whose wage level is not required to comply with federal, state or local prevailing wage law, for work covered or funded by a contract with or grant from the City, no less than the Living Wage. The current Living Wage is defined as \$15.90/hour for those employers that provide employee health care (as defined in the Ordinance at Section 1:815 Sec. 1 (a)), or no less than \$17.73/hour for those employers that do not provide health care. The Contractor or Grantor understands that the Living Wage is adjusted and established annually on April 30 in accordance with the Ordinance and covered employers shall be required to pay the adjusted amount thereafter to be in compliance with Section 1:815(3).

Check the applicable box below which applies to your workforce

<input type="checkbox"/>	Employees who are assigned to any covered City contract/grant will be paid at or above the applicable living wage without health benefits
<input checked="" type="checkbox"/>	Employees who are assigned to any covered City contract/grant will be paid at or above the applicable living wage with health benefits

- (f) To post a notice approved by the City regarding the applicability of the Living Wage Ordinance in every work place or other location in which employees or other persons contracting for employment are working.
- (g) To provide to the City payroll records or other documentation within ten (10) business days from the receipt of a request by the City.
- (h) To permit access to work sites to City representatives for the purposes of monitoring compliance, and investigating complaints or non-compliance.
- (i) To take no action that would reduce the compensation, wages, fringe benefits, or leave available to any employee covered by the Living Wage Ordinance or any person contracted for employment and covered by the Living Wage Ordinance in order to pay the living wage required by the Living Wage Ordinance.

The undersigned states that he/she has the requisite authority to act on behalf of his/her employer in these matters and has offered to provide the services or agrees to accept financial assistance in accordance with the terms of the Living Wage Ordinance. The undersigned certifies that he/she has read and is familiar with the terms of the Living Wage Ordinance, obligates the Employer/Grantee to those terms and acknowledges that if his/her employer is found to be in violation of Ordinance it may be subject to civil penalties and termination of the awarded contract or grant of financial assistance.

Premier Power Maintenance
Company Name

4035 Championship Dr
Street Address

Penny Williams
Signature of Authorized Representative

6/16/2023
Date

Indianapolis, IN 46268
City, State, Zip

Penny Williams HR Manager
Print Name and Title

317-220-4095
Phone/Email address

penny.williams
@premierpower.us

ATTACHMENT E



VENDOR CONFLICT OF INTEREST DISCLOSURE FORM

All vendors interested in conducting business with the City of Ann Arbor must complete and return the Vendor Conflict of Interest Disclosure Form in order to be eligible to be awarded a contract. Please note that all vendors are subject to comply with the City of Ann Arbor's conflict of interest policies as stated within the certification section below.

If a vendor has a relationship with a City of Ann Arbor official or employee, an immediate family member of a City of Ann Arbor official or employee, the vendor shall disclose the information required below.

1. No City official or employee or City employee's immediate family member has an ownership interest in vendor's company or is deriving personal financial gain from this contract.
2. No retired or separated City official or employee who has been retired or separated from the City for less than one (1) year has an ownership interest in vendor's Company.
3. No City employee is contemporaneously employed or prospectively to be employed with the vendor.
4. Vendor hereby declares it has not and will not provide gifts or hospitality of any dollar value or any other gratuities to any City employee or elected official to obtain or maintain a contract.
5. Please note any exceptions below:

Conflict of Interest Disclosure	
Name of City of Ann Arbor employees, elected officials or immediate family members with whom there may be a potential conflict of interest.	<input type="checkbox"/> Relationship to employee
	<input type="checkbox"/> Interest in vendor's company
	<input type="checkbox"/> Other (please describe in box below)

*Disclosing a potential conflict of interest does not disqualify vendors. In the event vendors do not disclose potential conflicts of interest and they are detected by the City, vendor will be exempt from doing business with the City.

I certify that this Conflict of Interest Disclosure has been examined by me and that its contents are true and correct to my knowledge and belief and I have the authority to so certify on behalf of the Vendor by my signature below.		
Premier Power Maintenance		517-715-9997
Vendor Name		Vendor Phone Number
	6/22/23	Steve Monte
Signature of Vendor Authorized Representative	Date	Printed Name of Vendor Authorized Representative

ADDENDUM No. 1

RFP No. 23-33

WWTP Electrical Preventative Maintenance

Due: June 29, 2023 by 2:00 p.m. (local time)

The information contained herein shall take precedence over the original documents and all previous addenda (if any), and is appended thereto. **This Addendum includes three (3) pages.**

The Proposer is to acknowledge receipt of this Addendum No. 1, including all attachments in its Proposal by so indicating in the proposal that the addendum has been received. Proposals submitted without acknowledgement of receipt of this addendum may be considered non-conforming.

The following forms provided within the RFP Document should be included in submitted proposal:

- **Attachment A – Prevailing Wage Declaration of Compliance**
- **Attachment B – Legal Status of Offeror**
- **Attachment C – Non-Discrimination Declaration of Compliance**
- **Attachment D – Living Wage Declaration of Compliance**
- **Attachment E – Vendor Conflict of Interest Disclosure Form**

Proposals that fail to provide these completed forms listed above upon proposal opening may be rejected as non-responsive and may not be considered for award.

I. QUESTIONS AND ANSWERS

The following Questions have been received by the City. Responses are being provided in accordance with the terms of the RFP. Respondents are directed to take note in its review of the documents of the following questions and City responses as they affect work or details in other areas not specifically referenced here.

Q1: What is the anticipated number of electricians for this contract?

A1: There is not a specific number expected. It is up to the contractor to determine the number of electricians that are needed to complete the task.

Q2: Do you expect the technician(s) will be full time onsite 40 hours per week?

A2: The City's expectation is that the work will be performed in a timely manner. The time that technicians will be onsite will depend on the workflow and coordination with plant staff.

Q3: Will we be required to be on 24/7 call for emergency services?

A3: 24/7 on call is not required. However, plant operations are 24/7 and will need to continue throughout the project therefore if the maintenance tasks being performed interrupt plant operations the city will expect the contractor to remedy the issue as quickly as possible.

CITY OF ANN ARBOR WWTP

June 14, 2023

11:00am

Electrical Preventative Maintenance

RFP 23-33

NAME	COMPANY	PHONE	EMAIL
Steve Johnson	Eaton	(989) 327-4464	SteveJohnson@Eaton.Co.
Mark Fellers	SHAW	(248) 845-9528	mfellers@shaw.si.com
SEAN BORGMAN	SHERMCO	(734) 634-3200	SBORGMAN@SHERMCO.COM
Michael Schulte	RESA POWER	(586) 945-2042	michael.schulte@resapower.com
Brian Burgess	Premier Power Maintenance	(517) 715-3180	brian.burgess@premierpower.us
DAVID HITE	UTILITIES INSTRUMENTATION	(517) 914-2181	DAVID.HITE@TEAMUIS.COM
JOEL VAN DOUSE	Superior Electric Technology	(517) 763-6888	Joelvdouser@segj.com
		()	
		()	
		()	
		()	
		()	
		()	
		()	
		()	
		()	
		()	
		()	

PLEASE PRINT CLEARLY

ADDENDUM No. 2

RFP No. 23-33

WWTP Electrical Preventative Maintenance

Due: June 29, 2023 by 2:00 p.m. (local time)

The information contained herein shall take precedence over the original documents and all previous addenda (if any), and is appended thereto. **This Addendum includes two (2) pages.**

The Proposer is to acknowledge receipt of this Addendum No. 2, including all attachments in its Proposal by so indicating in the proposal that the addendum has been received. Proposals submitted without acknowledgement of receipt of this addendum may be considered non-conforming.

The following forms provided within the RFP Document should be included in submitted proposal:

- Attachment A – Prevailing Wage Declaration of Compliance
- Attachment B – Legal Status of Offeror
- Attachment C – Non-Discrimination Declaration of Compliance
- Attachment D – Living Wage Declaration of Compliance
- Attachment E – Vendor Conflict of Interest Disclosure Form

Proposals that fail to provide these completed forms listed above upon proposal opening may be rejected as non-responsive and may not be considered for award.

I. CORRECTIONS/ADDITIONS/DELETIONS

Changes to the RFP documents which are outlined below are referenced to a page or Section in which they appear conspicuously. Offerors are to take note in its review of the documents and include these changes as they may affect work or details in other areas not specifically referenced here.

Section/Page(s)	Change
Page 30 and 31	As provided in RFP No. 23-33 Document: Fee Proposal Form
	As updated herein: Fee Proposal Form

Comment: The intent with this change is to simply replace the inaccurate hourly rate focused Fee Proposal Form provided in the RFP Document with the single lump sum Fee Proposal Form attached herein.

Offerors are responsible for any conclusions that they may draw from the information contained in the Addendum.

Fee Proposal Form

All proposed fees, cost or compensation for the services requested herein should be provided in the separately sealed Fee Proposal envelope only. See Pages 5-6 in the RFP Document for more information.

RFP# 23-33 - WWTP Electrical Preventative Maintenance

Company: _____

For the entire work outlined in these documents for **WWTP Electrical Preventative Maintenance**, complete as specified, using equipment and materials only of the type and manufacturers where specifically named.

Total cost to complete work:

_____ (\$_____)

see sealed envelope

SERVICES OVERVIEW

NETA
ACCREDITED COMPANY



Premier Power Maintenance has been recognized as one of the leading electrical testing and maintenance companies since 1985. Headquartered in Indianapolis, Indiana, Premier Power Maintenance has strategically located Service Centers across the Midwest to best service its customer base. Premier Power Maintenance prides itself on being extremely versatile, capable of servicing the entire spectrum of our customer's distribution system needs to 765 kV. Primary service areas include: Safety Training, Engineering, Installation, Commissioning, Preventative Maintenance, and Repair. Over 50% of our Technicians are certified NETA Level III or IV.

24 HOUR EMERGENCY SERVICE

SAFETY TRAINING

- Electrical Safety Training for Low to Medium voltage
- OSHA 10 & 30 Hour
- NFPA 70E

ENGINEERING

- Arc Flash Study / Data Collection
- Coordination Study and Load Flow Analysis
- Switchgear Refurbishment
- Design Services
- Ground Testing
- Power Quality
- Oil Analysis

INSTALLATION

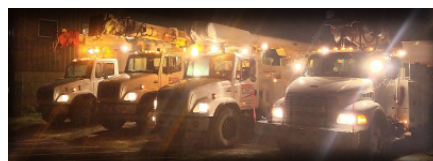
- Substation Construction
- Cable Install / Replacement
- Transformer / Regulator / SF6 Breaker

COMMISSIONING

- Distribution Switchgear
- Substation
- Rebuilt Transformers / SFRA testing
- SF6 Breakers
- MV Cable Sets / Terminations
- Transmission Voltage Class Relay Protection Scheme Upgrades

REPAIR

- Low / Medium / High Voltage
- Transformers
- Circuit breaker repair onsite / rebuild in shop
- Switches
- MOAB'S
- Reclosers
- Catastrophic Recovery Services



PREVENTATIVE MAINTENANCE

- Hot Vac services
- Servicing of Substation and Distribution Equipment
- Transformer Bushings / CT's / LTC's / Gasket replacement
- Breaker Testing / Maintenance / Rebuild
- Switchgear Refurbishment / Upgrade
- Testing including
- Doble
- 3 Phase Relay
- Tan Delta
- Oil Analysis
- Infrared Services
- Ultra Sonic testing
- Station Batteries

24 HOUR EMERGENCY SERVICE

CALL (317) 879-0660

WWW.PREMIERPOWERMAINTENANCE.COM

"INTEGRITY, SKILL, TEAMWORK"