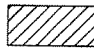




# LEGEND

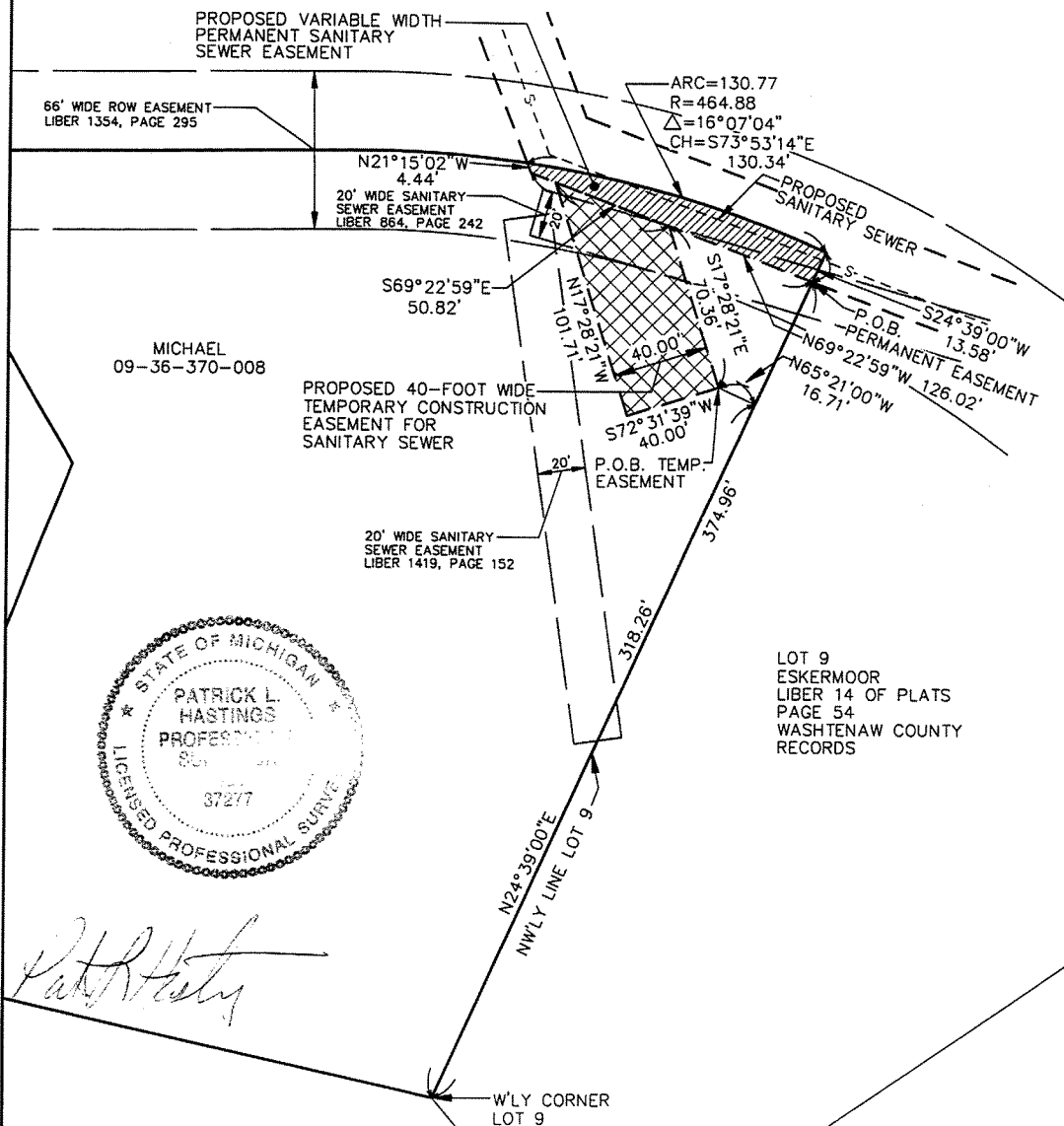
P.O.B. POINT OF BEGINNING

 SECTION CORNER

 PERMANENT SAN. EASEMENT

 TEMPORARY SAN. CONST. EASEMENT

SKETCH OF A VARIABLE WIDTH PERMANENT EASEMENT FOR SANITARY SEWER AND OF A 40-FOOT WIDE TEMPORARY CONSTRUCTION EASEMENT FOR SANITARY SEWER LOCATED IN THE SW 1/4 OF SECTION 36, T2S, R6E, ANN ARBOR TOWNSHIP, WASHTENAW COUNTY, MICHIGAN



*Patrick L. Hastings*

REVISED: 3/10/08

06009\_370-008.dwg

## MIDWESTERN CONSULTING



Civil, Environmental and Transportation Engineers  
Planners, Surveyors  
Landscape Architects

3815 Plaza Drive  
Ann Arbor, Michigan 48108  
Phone: 734.995.0200  
Fax 734.995.0599

MICHAEL PARCEL NO. 09-36-370-008  
PROPOSED SANITARY SEWER EASEMENTS

DATE: 10/31/06 JOB NO.: **06009**

SCALE: 1" = 60'



SHEET 1 OF 2