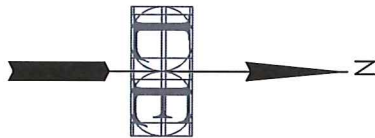
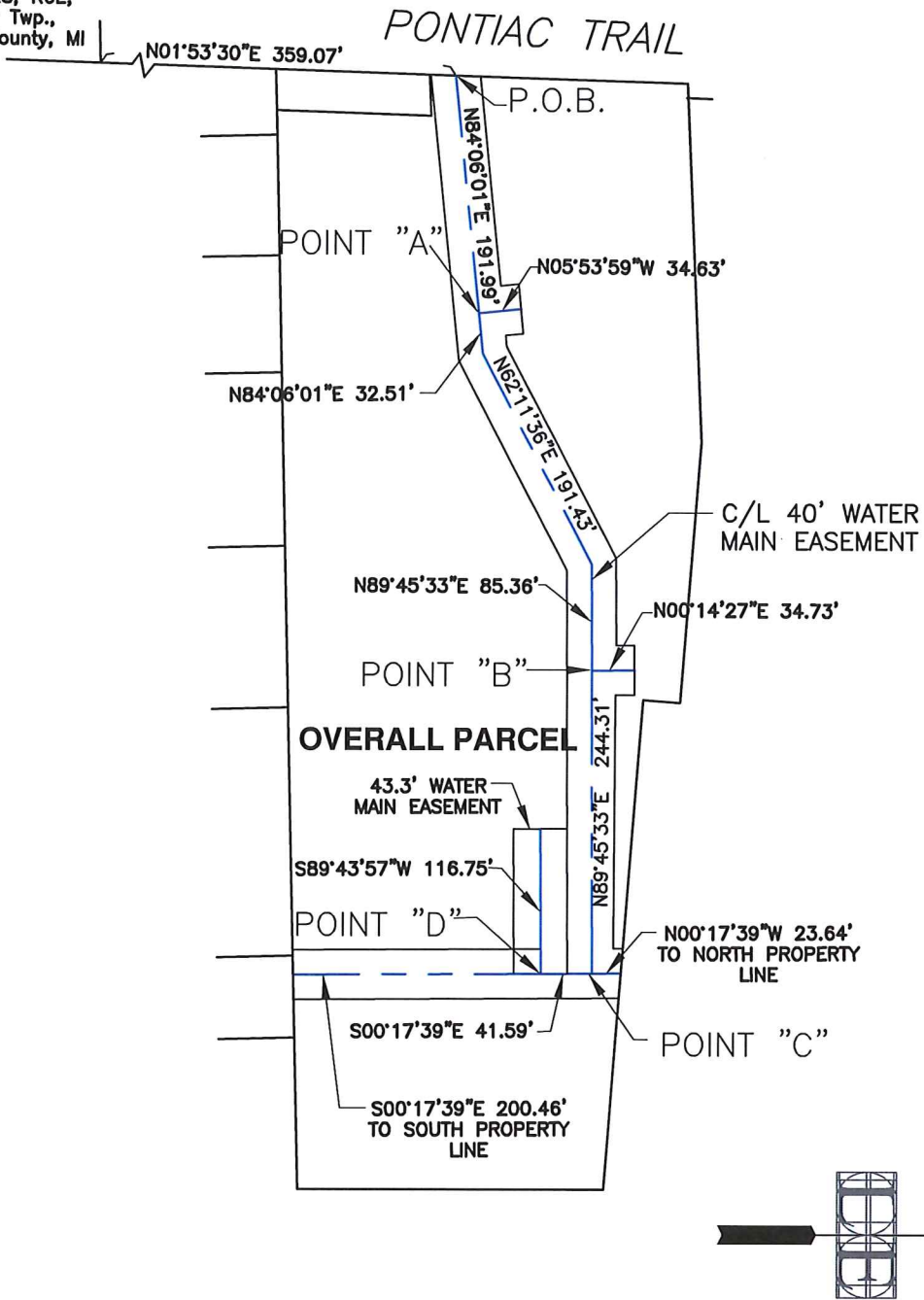


# WATER MAIN EASEMENT

NE Cor.  
 "Huron River Hills" Subdivision  
 L6,P47, W.C.R.  
 Part of SW 1/4  
 Sec. 16, T2S, R6E,  
 Ann Arbor Twp.,  
 Washtenaw County, MI



**LIVINGSTON ENGINEERING**  
 CIVIL ENGINEERING      SURVEYING      PLANNING

3300 S. OLD U.S. 23, BRIGHTON, MICHIGAN 48114

INTERNET: WWW.LIVINGSTONENG.COM      PHONE: (810) 225-7100      FAX: (810) 225-7699

**EXHIBIT A**

RUDOLF STEINER HIGH SCHOOL	0'                      40'                      80' 	DATE 07-13-2017
DESCRIPTION WATER MAIN ESMT SW 1/4 SEC 16, T2S, R6E, WASHTENAW COUNTY, MICHIGAN	SCALE 1"=150'	REV.
	SHEET No. 1 of 3	CREW MMB
	DRAWN JED	CHECK

FILE: G:\13231 Brivar Rudolf Steiner\dwg\const plans\13231WM ESMT.dwg