



# Finishing the B2B Trail in Ann Arbor:

How to Fix the Problem Areas

Presentation to Ann Arbor  
Park Advisory Commission  
August 20, 2013

# About WBWC

- 12 years of effective advocacy
  - Trails and bike lanes
  - Crosswalk ordinance
- Participation in events
  - Bike-to-work day
  - Earth Day
  - Huron River Day
  - Green fair
  - Bike parking service for events
- Participation on public committees
  - Ann Arbor Alternative Transportation Committee
  - Ypsilanti Non-Motorized Advisory Committee
  - Washtenaw County Greenways Advisory Committee
  - WATS Technical Advisory Committee
- Cooperation with other groups
  - Ann Arbor Bicycle Touring Society
  - Michigan Mountain Biking Association
  - Washtenaw County Health Department
  - GetDowntown



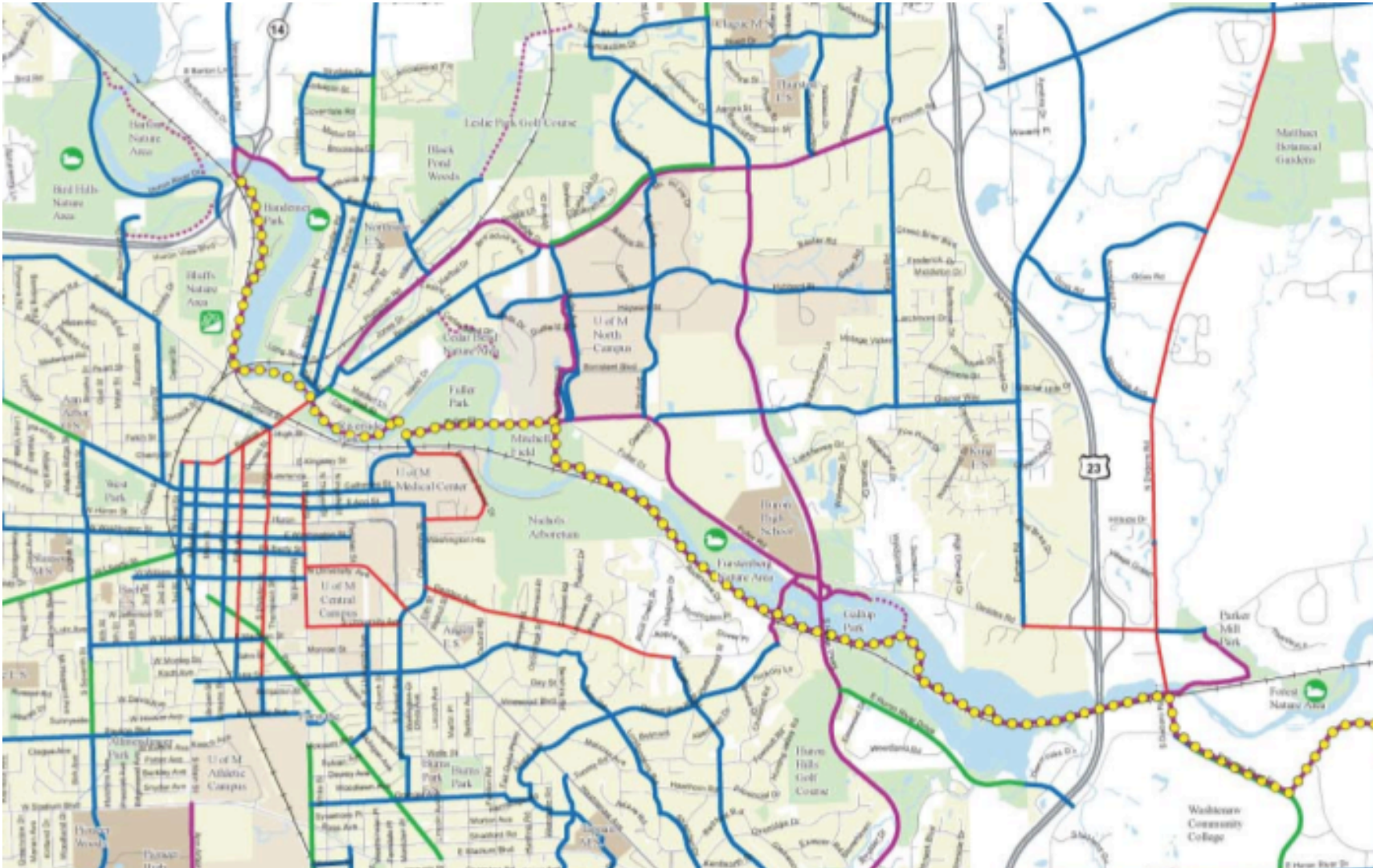
# Border-to-Border (B2B) Trail -- Overview



## Legend

- Existing B2B Route  
paved shared-use path, unpaved path, bike lanes, road, trail signs
- Planned Trail  
planning and/or design documents have been developed
- Conceptual

# B2B Trail in Ann Arbor

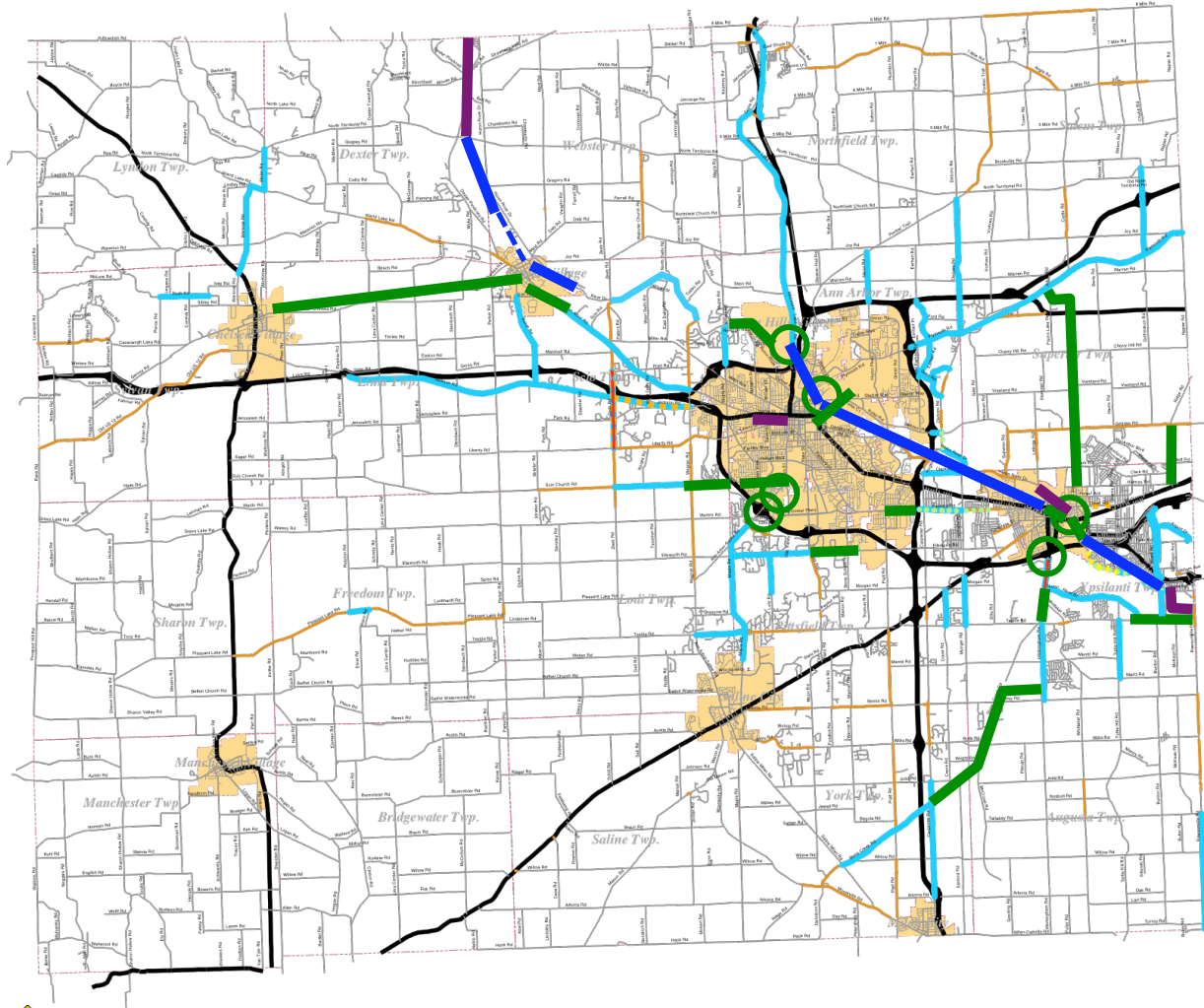


# WBWC prioritization principles

1. Connection of population and activity centers
2. Completion of Border-to-Border Trail
3. Accommodation of needs of all people
4. County-wide significance
5. Near-term feasibility
6. Presence in current plans

# Overview of WBWC priorities

## Making the connections !

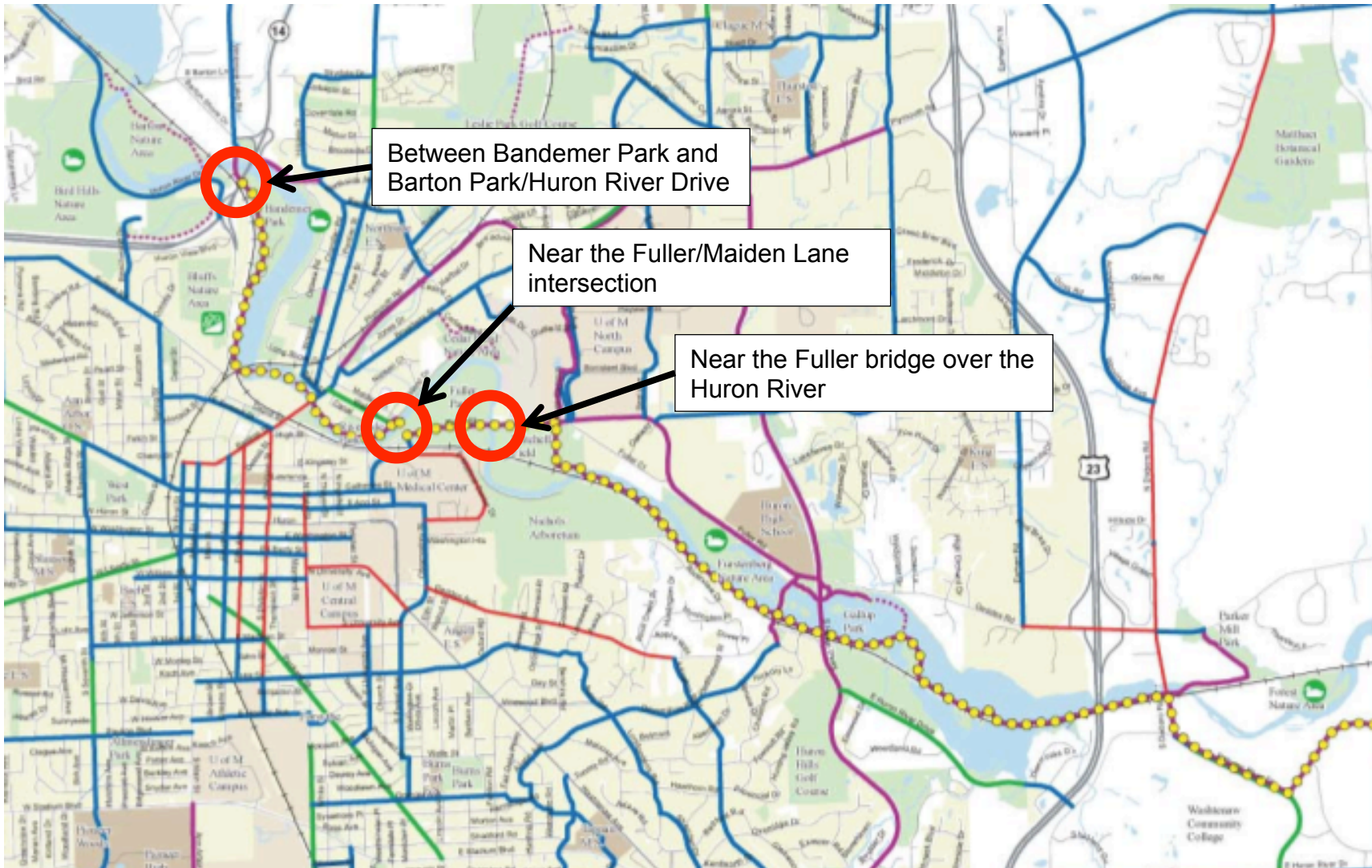


- Existing paved shoulders
- B2B segments: Existing
- - - Under const.
- Priority corridors
- Priority sites
- Planning priorities

Source of base map:  
Washtenaw County  
Road Commission

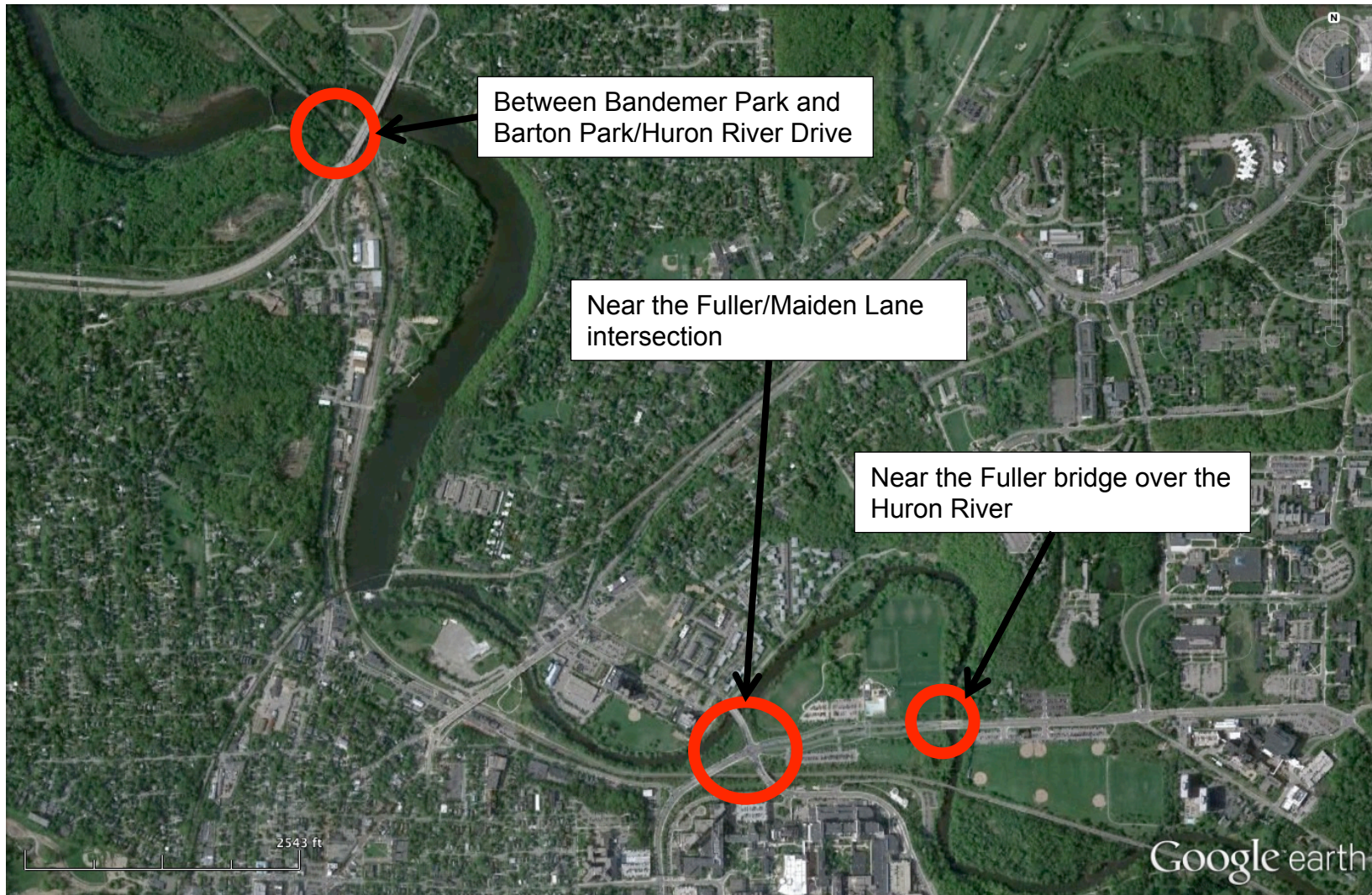


# The 3 biggest B2B problem areas in Ann Arbor



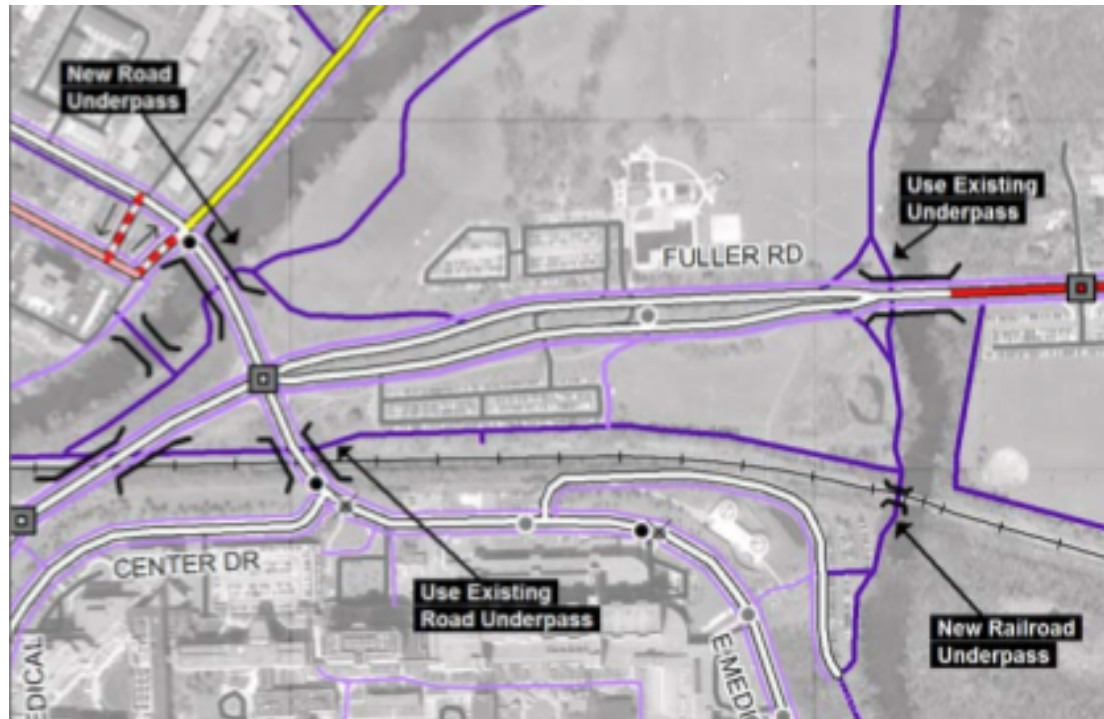


# Another view of the 3 problem areas

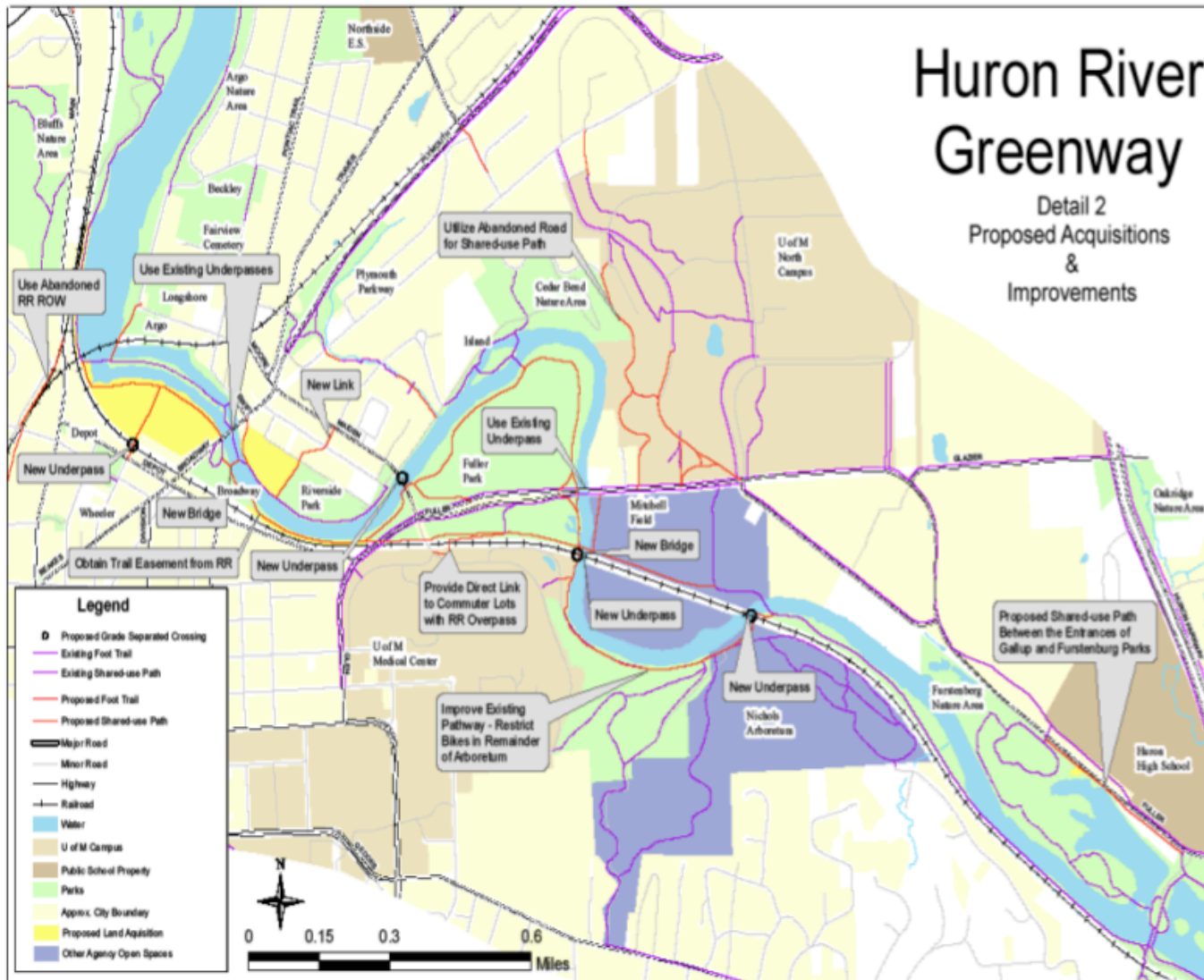




# From 2007 Non-motorized Plan

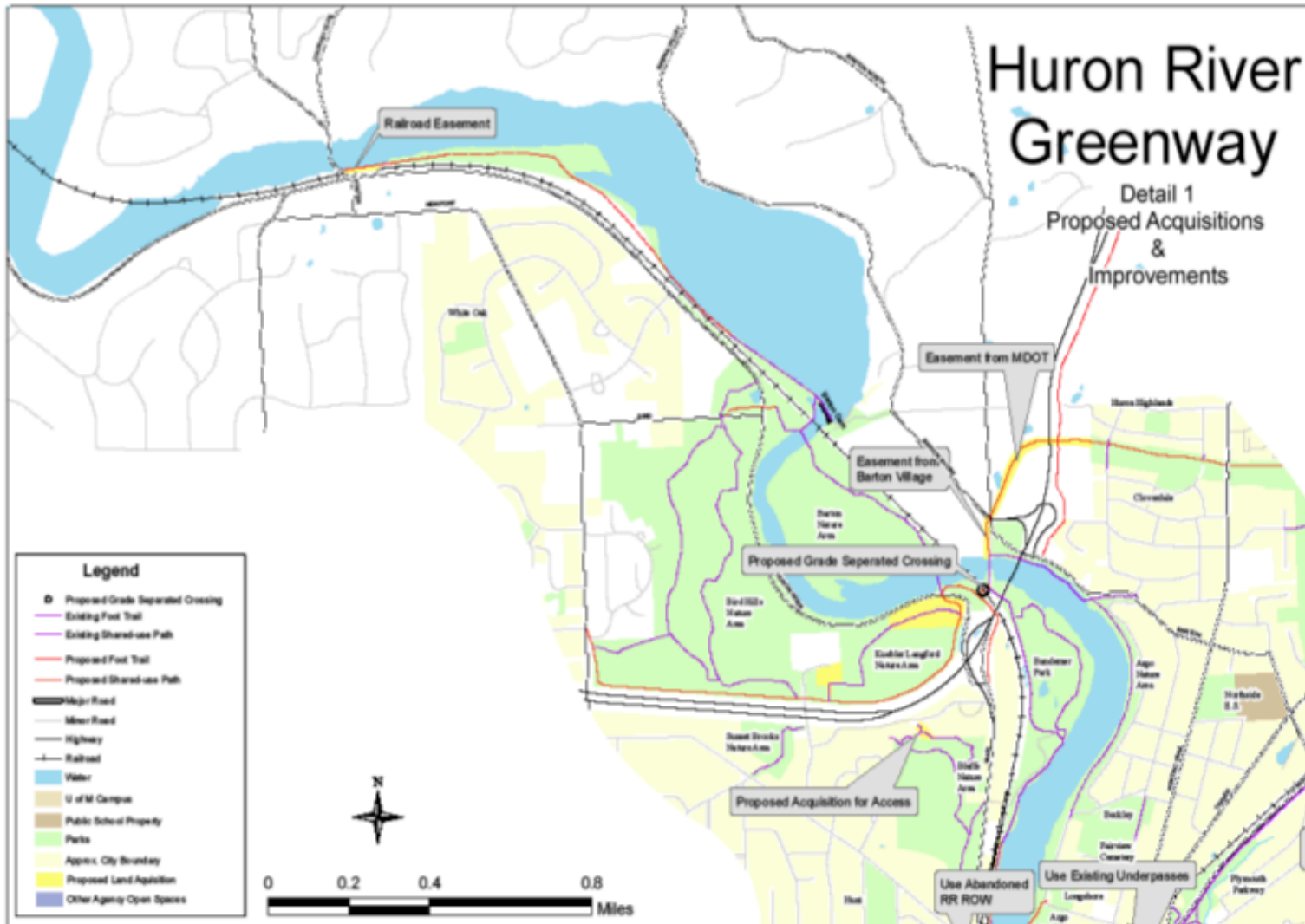


# 2011 Parks plan – Fuller / Maiden Lane area

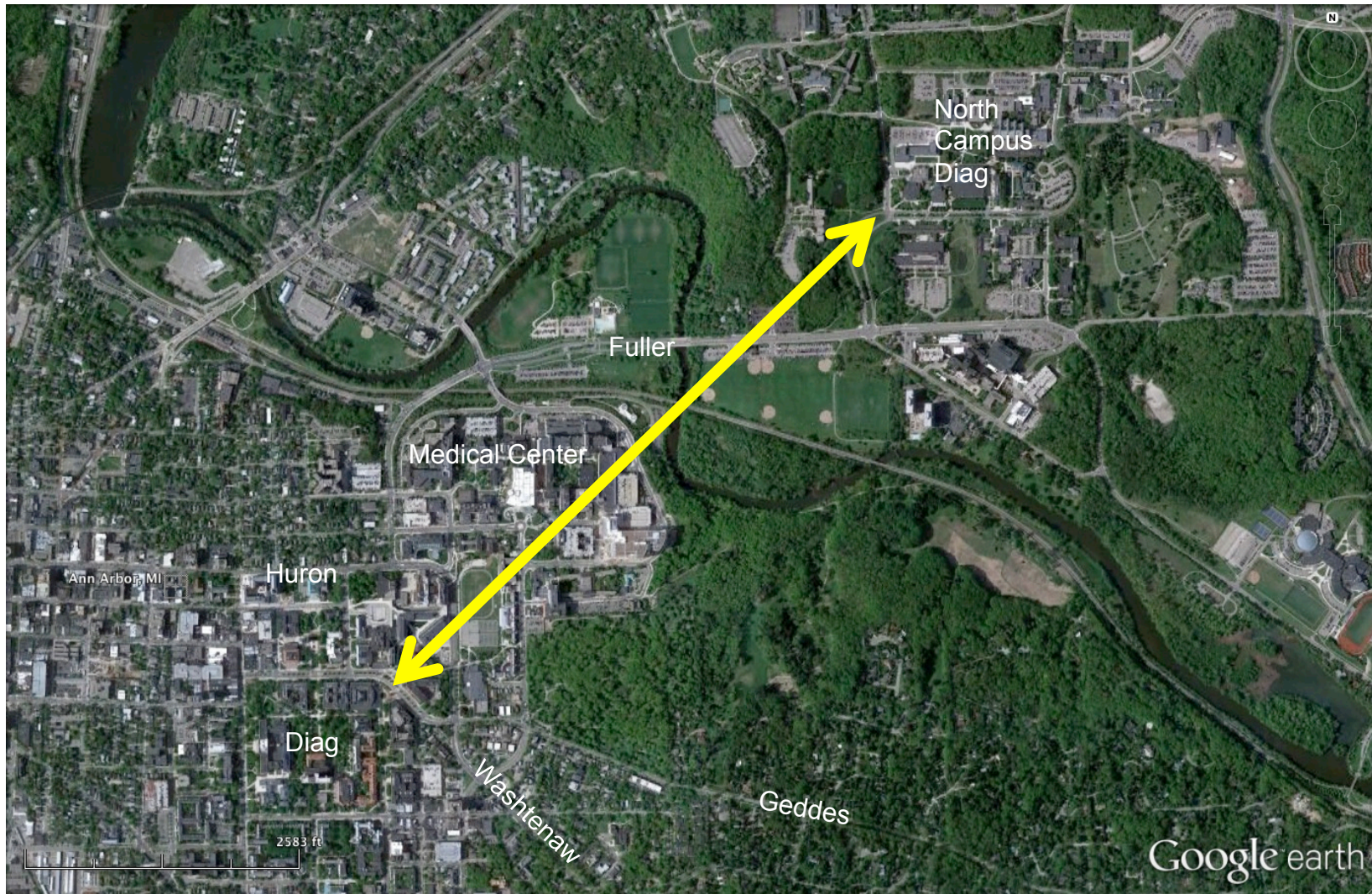




# 2011 Parks plan – Bandemer / Barton connection

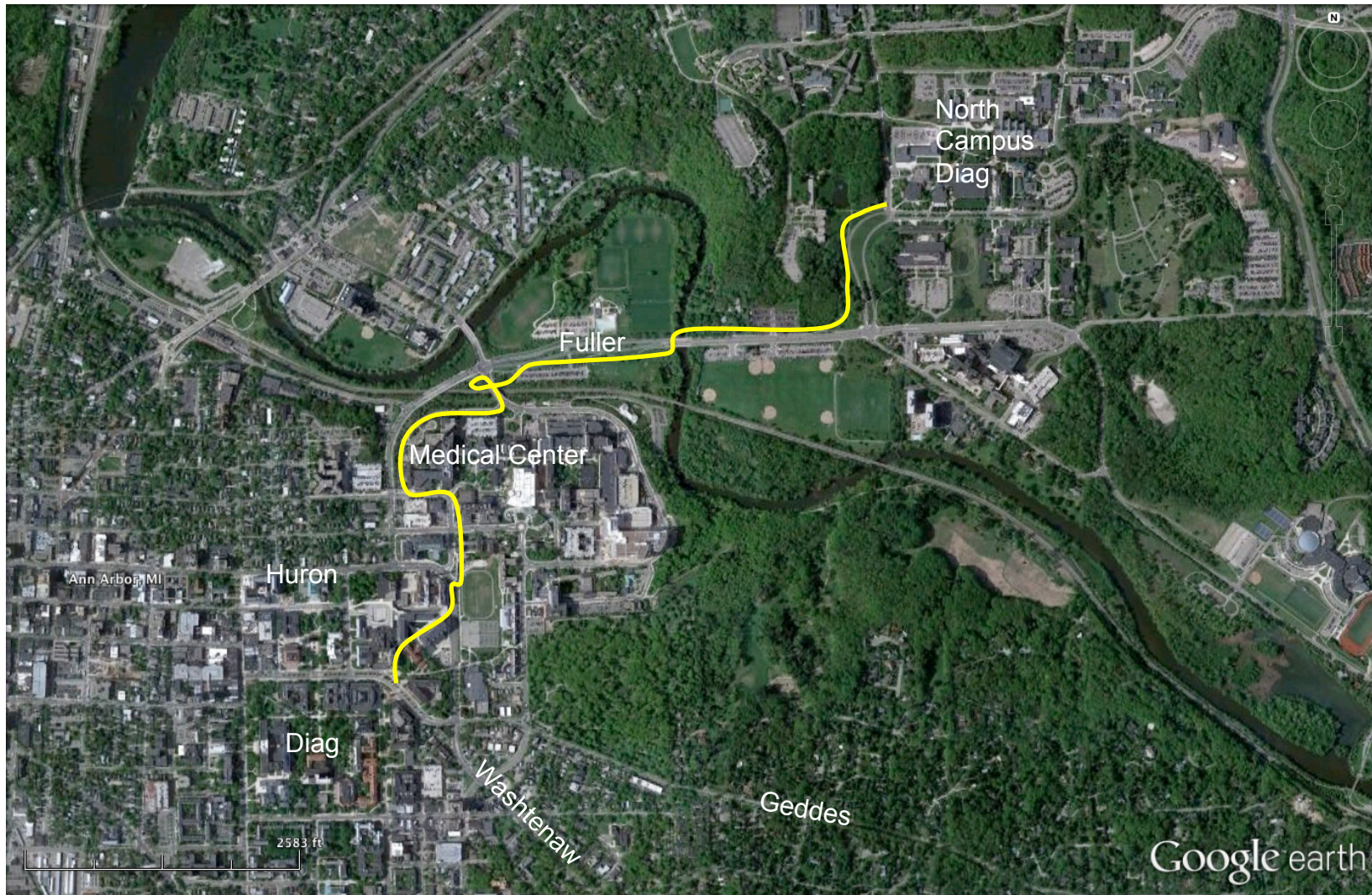


# No good way to bicycle now between campuses



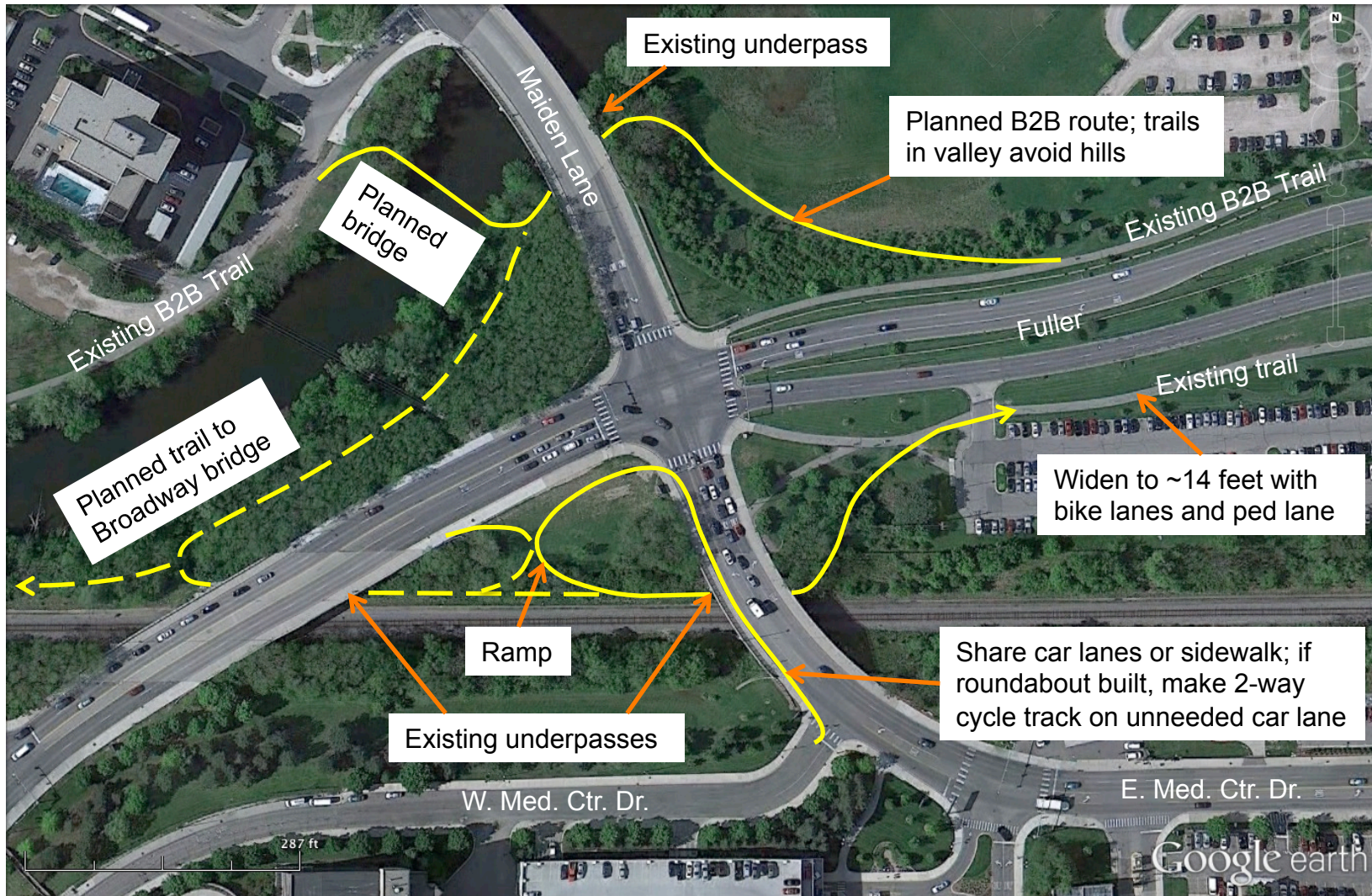


# Proposed inter-campus bike route



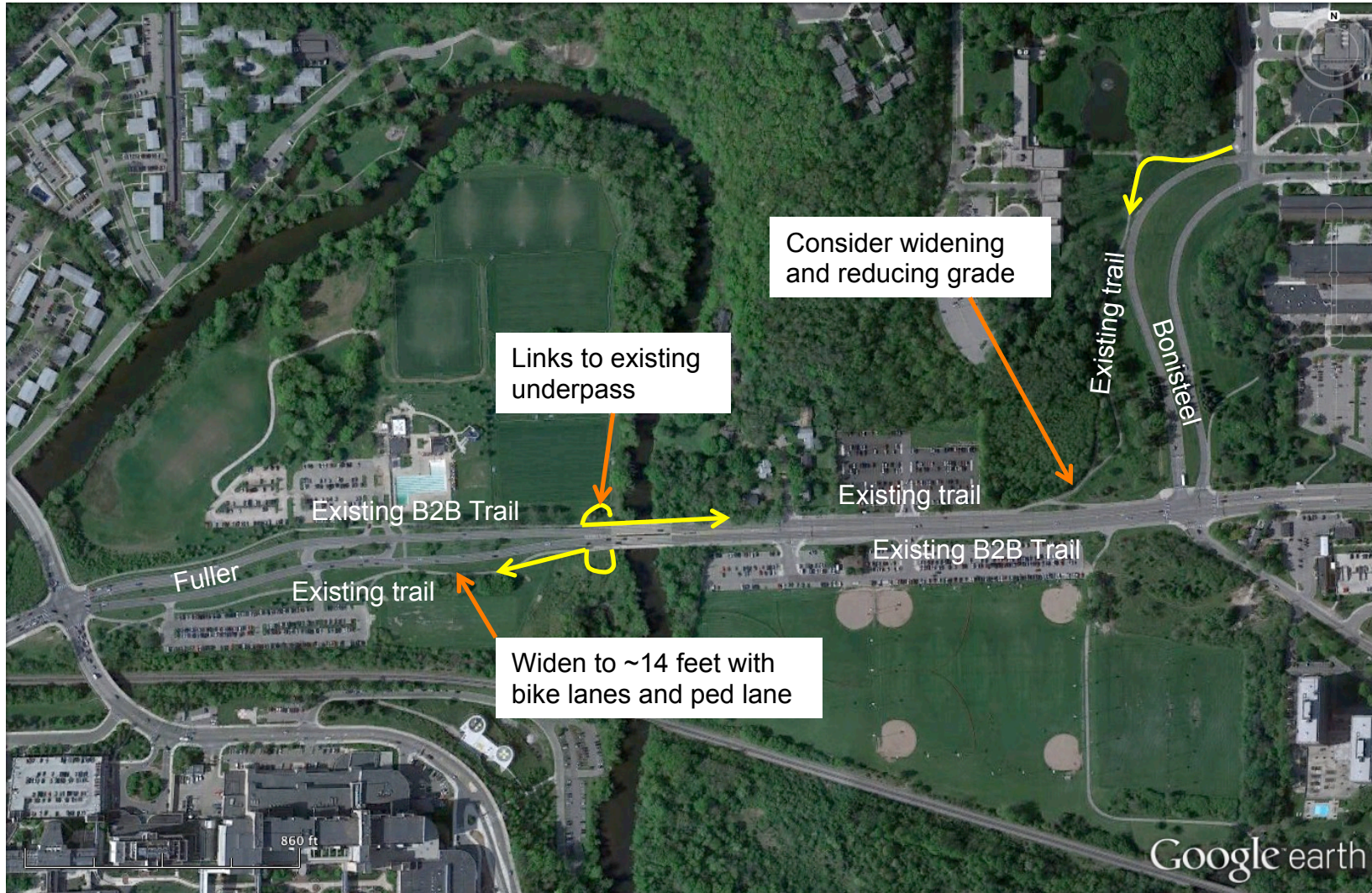


# Fuller / Maiden Lane intersection area



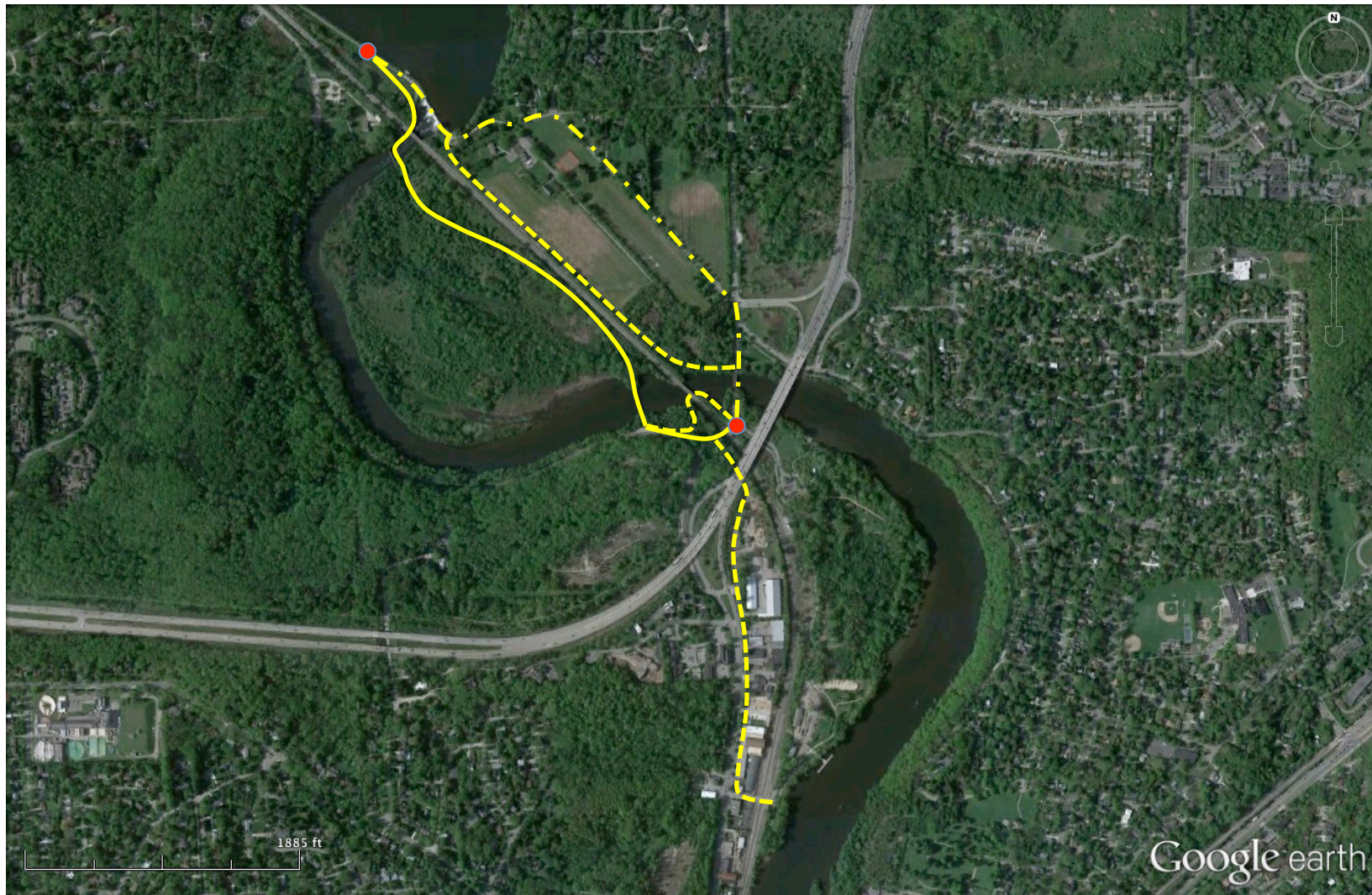


# Fuller / Huron River vicinity





# Bandemer / Barton-area alternatives





# Possible B2B extension to Foster Bridge



## North Main Task Force – WBWC views

- Highest priority
  - Bandemer / Barton connection
- Lower priorities
  - Railroad underpass near Main & Depot
  - Sidewalk repair & possible extension
  - Park on DTE site with trail and Allen Creek bridge
  - Railroad gate at Lake Shore Drive
  - Crosswalk to Bluffs Park
  - Main/Depot intersection improvement



# Trails are in demand

From a 12-hour count:

- Fuller at Maiden Lane
  - 1767 pedestrians
  - 443 bicyclists (> 90% off-road)
- Maiden Lane at Fuller
  - 2694 pedestrians
  - 292 bicyclists (> 90% off-road)

Source: Count performed by city staff October 5, 2006, 7 a.m. to 7 p.m.

## Possible funding sources

- Michigan Natural Resources Trust Fund
- Transportation Alternatives Program
- Washtenaw County Parks
- Local transportation funds
- Park Maintenance and Capital Improvements Millage
- University of Michigan



# Summary -- B2B priorities in Ann Arbor

