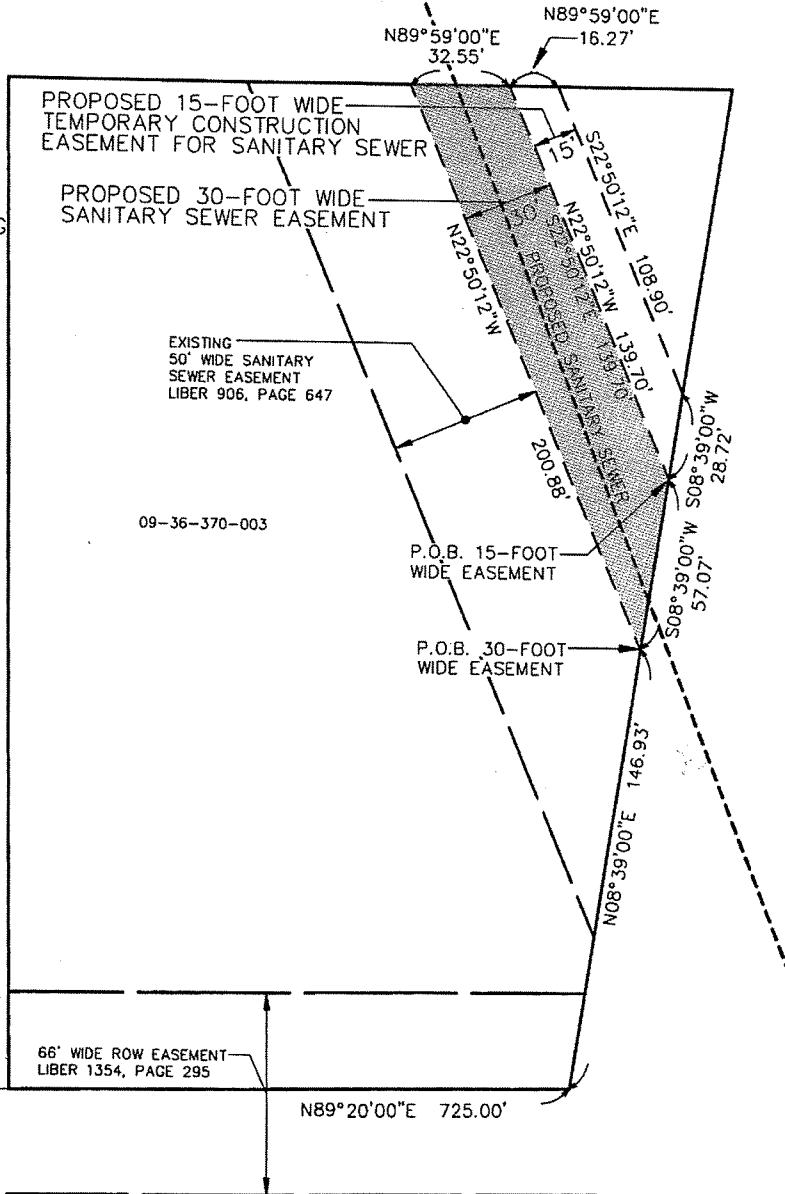
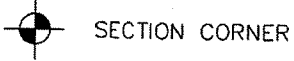


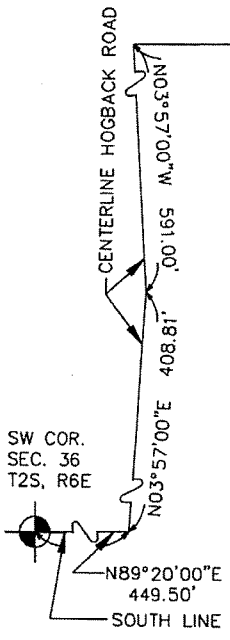


LEGEND

P.O.B. POINT OF BEGINNING



SKETCH OF A PROPOSED 30-FOOT WIDE SANITARY SEWER EASEMENT AND A 16-FOOT WIDE TEMPORARY CONSTRUCTION EASEMENT FOR SANITARY SEWER LOCATED IN THE SW 1/4 OF SECTION 36, T2S, R6E, ANN ARBOR TOWNSHIP, WASHTENAW COUNTY, MICHIGAN



MIDWESTERN CONSULTING



Civil, Environmental and Transportation Engineers
Planners, Surveyors
Landscape Architects

3878 Blawie Drive
Stark Arbor, Michigan 48318
Phone: 248.826.0200
Fax 248.826.0589

ALIKO PARCEL NO. 09-36-370-003
PROPOSED SANITARY EASEMENTS

DATE: 10/12/06 JOB NO.: **06009**

SCALE: 1" = 50'

SHEET 1 OF 1

R:\06009\ACAD\SURVEY\06009_370-003.dwg, Layout1, 10/12/2006 3:55:32 PM, kmw, 8.5x14-Canon.pcs