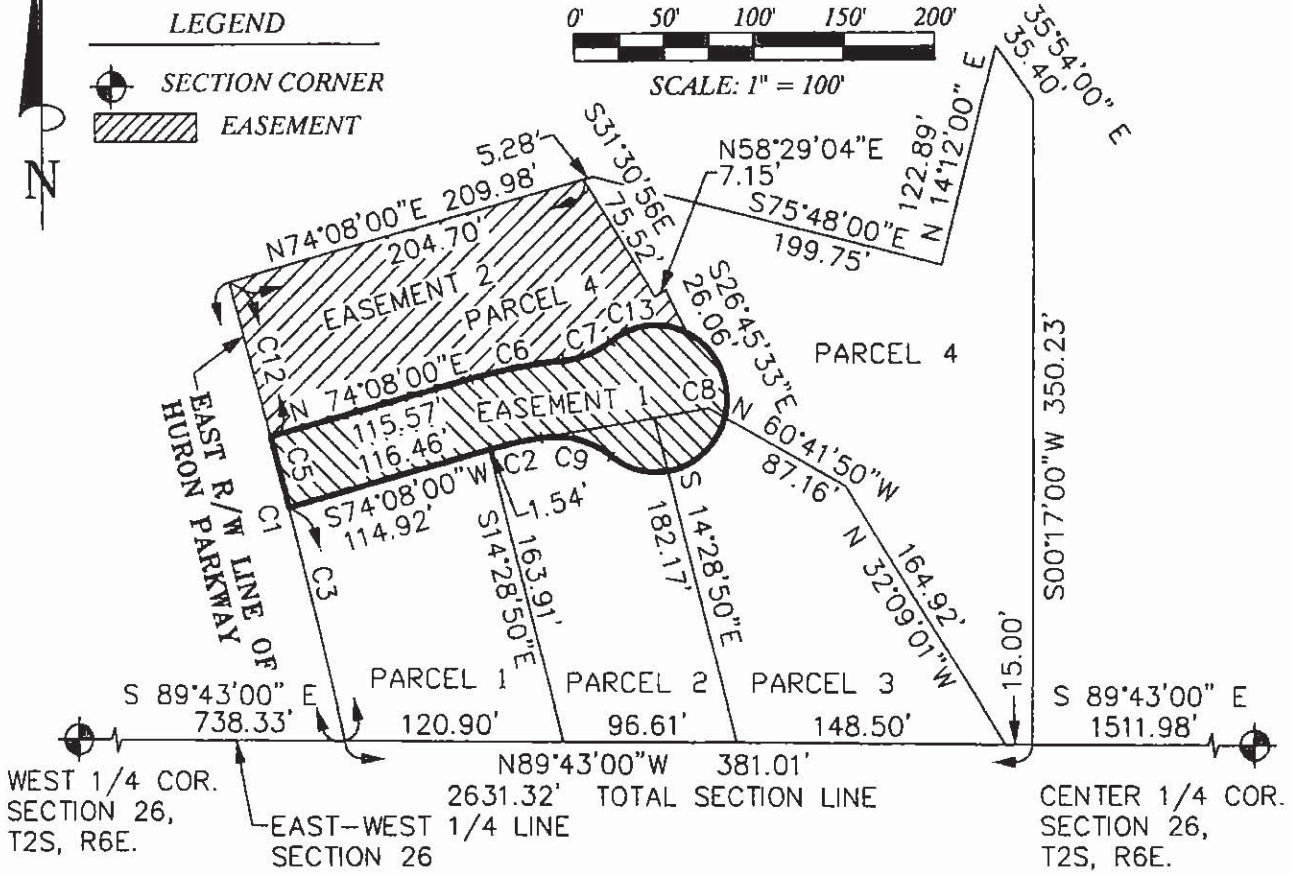


EXHIBIT B



CURVE LABEL	CURVE RADIUS	CURVE LENGTH	CURVE DELTA	CHORD LENGTH	CHORD BEARING
C1	4845.00'	257.53'	3°02'44"	257.50'	N 14°20'40" W
C2	230.00'	28.37'	7°04'03"	28.35'	S 77°40'02" W
C3	4845.00'	130.34'	1°32'29"	130.34'	N 13°35'33" W
C5	4845.00'	40.01'	0°28'23"	40.01'	N 14°35'59" W
C6	280.00'	51.96'	10°37'53"	51.88'	N 79°26'57" E
C7	50.00'	28.86'	33°04'15"	28.46'	N 68°13'46" E
C8	40.00'	179.24'	256°44'25"	62.72'	S 00°03'51" W
C9	50.00'	41.21'	47°13'41"	40.06'	N 75°10'47" W
C12	4845.00'	87.18'	1°01'52"	87.18'	N 15°21'06" W
C13	40.00'	45.12'	64°37'27"	42.76'	S 84°00'22" W

EASEMENT 1- PRIVATE DRIVE LEGAL DESCRIPTION

Commencing at the West 1/4 corner of Section 26, Town 2 South, Range 6 East, City of Ann Arbor, Washtenaw County, Michigan, thence S 89° 43' 00" E 738.33 feet along the East-West 1/4 Line of said Section 26; thence 130.34 feet along the East Right of Way line of Huron Parkway, the arc of a circular curve to the left with a radius of 4845.00 feet, and a chord of N 13° 35' 33" W 130.34 feet to the place of beginning; thence continuing 40.01 feet along the East Right of Way line of Huron Parkway, the arc of a circular curve to the left with a radius of 4845.00 feet, and a chord of N 14° 35' 59" W 40.01 feet; thence N 74° 08' 00" E 115.57 feet; thence 51.96 feet along the arc of a circular curve to the right with a radius of 280.00 feet, and a chord of N 79° 26' 57" E 51.88 feet; thence 28.86 feet along the arc of a circular curve to the left with a radius of 50.00 feet, and a chord of N 68° 13' 46" E 28.46 feet; thence 179.24 feet along the arc of a circular curve to the right with a radius of 40.00 feet, and a chord of S 00° 03' 51" W 62.72 feet; thence 41.21 feet along the arc of a circular curve to the left with a radius of 50.00 feet, and a chord of N 75° 10' 47" W 40.06 feet; thence 28.37 feet along the arc of a circular curve to the left with a radius of 230.00 feet, and a chord of S 77° 40' 02" W 28.35 feet; thence S 74° 08' 00" W 116.46 feet to the place of beginning, being part of the Northwest 1/4 of said Section 26, containing 0.2792 acres of land, 12,164 square feet, more or less.

AMERICAN LANDMARK SURVEY P.L.C.

SURVEY OF PART OF THE NORTHWEST 1/4 OF SECTION 26, T2S, R6E, CITY OF ANN ARBOR, WASHTENAW COUNTY, MICHIGAN.

CLIENT: HURON PARKWAY VENTURES

DATE 2/15/2013

DRAWN BY: GFD
 SCALE: 1" = 100'

PAGE 1 OF 3

JOB# 13107

Gerald F. Desloover
 GERALD F. DESLOOVER
 PROFESSIONAL SURVEYOR
 NO. 45166

P.O. BOX 130043
 ANN ARBOR, MI 48113
 734-677-7000

