

WEST PARK BANDSHELL

PAC Update
May 21, 2024



AGENDA

1

INTRODUCTION

2

ENGAGEMENT SUMMARY

3

DISCUSSION

PROJECT PROCESS

MANY OPPORTUNITIES TO SHARE YOUR THOUGHTS

STEP COMPLETE



Step 1 includes:

- Online Survey
- Informational Webinar
- Pop-Up Events at West Park
- Resident Focus Group
- Stakeholder Focus Group

STEP 1
COMMUNITY ENGAGEMENT R1

STEP 2
**ALTERNATIVE CONCEPT PLANS +
EVALUATION CRITERIA**

STEP 3
COMMUNITY ENGAGEMENT R2

STEP 4
**PREFERRED DIRECTION +
PROJECT COMPLETION**



Scan here to go to
the bandshell
project page.

CITY STAFF



Josh Landefeld
Park and Recreation
Manager



Adam Fercho
Landscape Architect /
Park Planner



Michelle Bennett
City Community
Engagement
Specialist

STEERING COMMITTEE

- Addarius Bryant**, Deputy Park Manager
- Jessica Black**, Customer Service
- Jill Thacher**, City Planning
- Jerry Hancock**, Stormwater / Floodplain Coordinator
- Larry O'Connell**, Park Advisory Commission
- Jamall Buford**, Ann Arbor Art Commission
- Marylin Watson-White**, AAHC, Miller Manor Supervisor

CONSULTANTS



Cheryl Zuellig
Landscape Architect,
SmithGroup



Brandon Woodle
Landscape Architect,
SmithGroup



Jamie Burton
Civil Engineer, Hubbell,
Roth & Clark



Adrianna Melchior
Architect,
Hubbell, Roth & Clark

MEETING PURPOSE

ENGAGEMENT ROUND 1 MEETINGS

WE ARE HERE TO:

- Provide information on the West Park Bandshell Project.
- Informing participants how to stay engaged and provide feedback throughout the project.
- Polling participants on values, priorities, and concerns.
- Hear likes and dislikes about your past experiences at events /concerts.



AGENDA

1

INTRODUCTION

2

ENGAGEMENT SUMMARY

3

DISCUSSION

INFORMATIONAL WEBINAR

9/11/2023

34
ATTENDEES

CONTENT

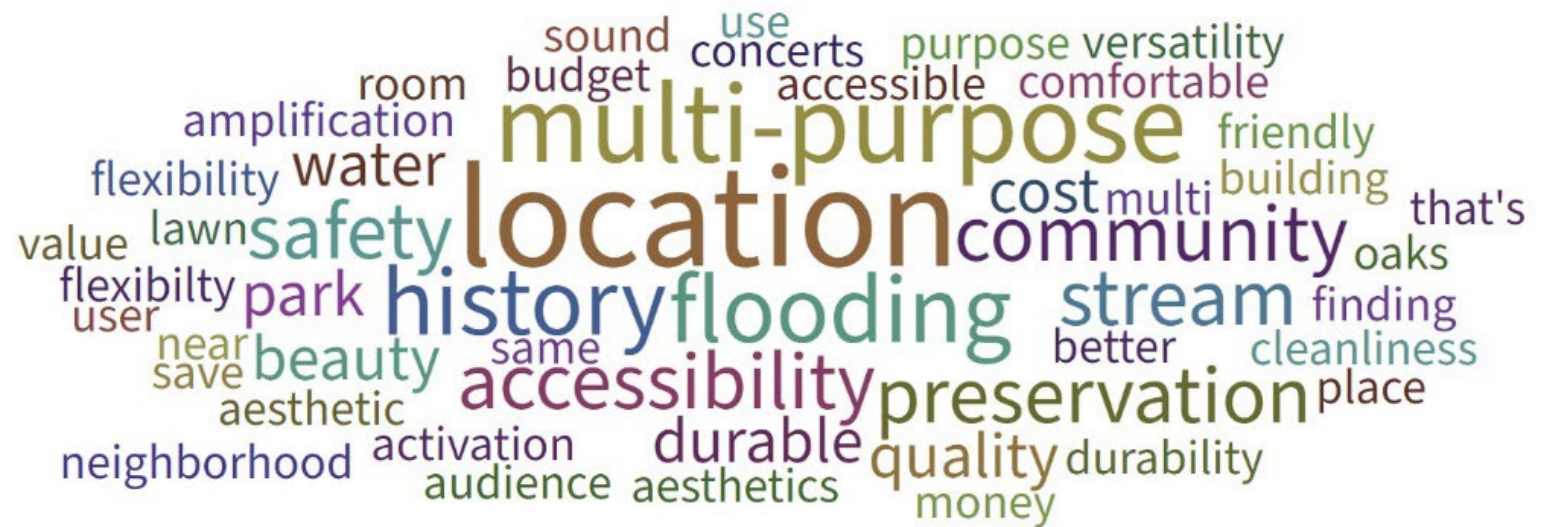
- Project overview
- West Park background
- 5 live-answer questions

Join by Web PollEv.com/wpb Join by Text Send **wpb** to 22333



QUESTION 2: In one word, what criteria should be used to evaluate options for the future of the Bandshell? (3 response max)

63



RESIDENT FOCUS GROUP

10/11/2023

12
ATTENDEES

CONTENT

- Project overview
- West Park background
- Small-group discussion



STAKEHOLDER FOCUS GROUP

10/18/2023

6
ATTENDEES

CONTENT

- Project overview
- West Park background
- Discussion focused on needs of organizations to hold events at West Park



POP-UP SESSIONS

8/21 –
9/27/2023

UNKNOWN
ATTENDEES

CONTENT

- Flyers with a project overview
- Open discussions and conversations to hear people's concerns, thoughts, and questions



ONLINE SURVEY

9/21 TO
10/23/2024

1,355
RESPONSES

CONTENT

- 8 pop-ups
- Background information on West Park
- Questions to understand the following:
 - Values
 - Likes/dislikes
 - Concerns
 - Experiences attending an event

West Park Bandshell Community Engagement

About This Survey

What is this survey?

The City of Ann Arbor wants to hear your values, priorities, and concerns related to the future of the bandshell. Your input will be used to identify values for evaluating options for making the bandshell structurally sound, how to program it, and how it impacts activity at West Park.

Who can take this survey?

This survey is open to anyone that is a current, past, or potential user of West Park.

Will there be other engagement sessions?

Yes. The process for this project includes:

- Round one of community engagement: this online survey and public meetings with neighbors and stakeholders.
- Development of Evaluation Criteria and Options: The City will analyze the engagement feedback and develop criteria to evaluate options for the future of the bandshell.
- Round two of community engagement: The City will ask for feedback on the evaluation criteria and the bandshell options.
- Project Completion: Lastly, the City will consider feedback from the community and select a preferred option for the future of the bandshell.

Where is West Park and what is the bandshell?

West Park is located on the north-west edge of downtown adjacent to the Water Hill, Arborview, and Old West Side neighborhoods. It is roughly 27-acres and surrounded by W. Huron Street, Chapin Street, Miller Avenue, and N. Seventh Street. The Bandshell is a performance venue, which includes a stage, the shell structure, backstage rooms, and outdoor seating on the sloped hillside.

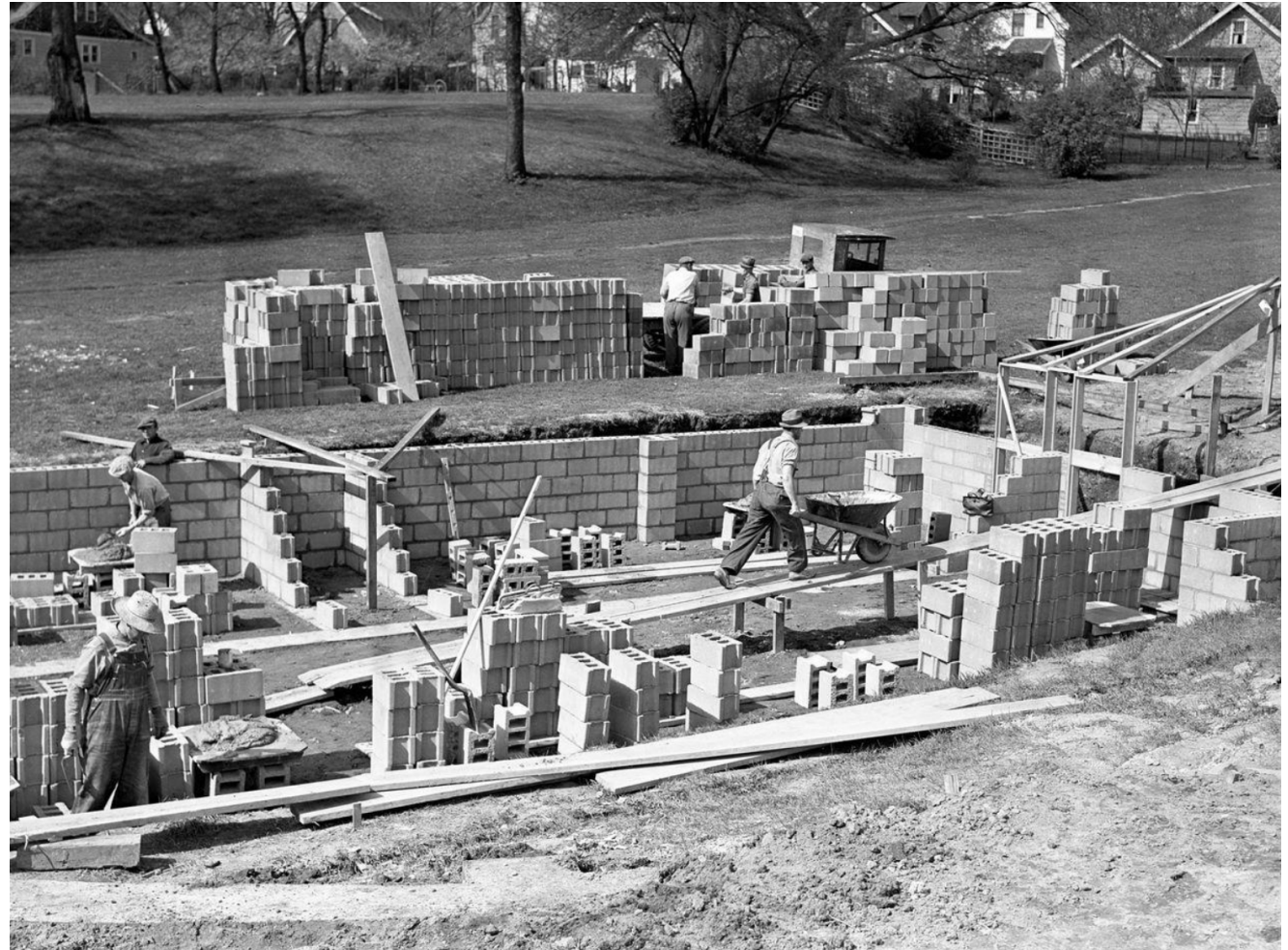
CITY OF ANN ARBOR TASK FORCE

7/5/2023

5
ATTENDEES

CONTENT

- Flyers with a project overview
- Open discussions and conversations to hear people's concerns, thoughts, and questions



Construction of the bandshell

FEEDBACK SUMMARY

- **Community members feel strongly that performances and events are an essential part of the activities at West Park.**
- Providing a venue that is multi-purpose and flexible for various types of events to support increasing the frequency of events was a high priority.
- People enjoyed attending a performance in a natural setting and the connections that were built in the community.
- Community members value increasing accessibility, improving stormwater / flood management, addressing safety, and fiscal prudence.
- The Task Force discussed the limitations on preserving the bandshell in-place due to its location in the floodway. Regulations prevent expansion of the footprint in the floodway and the City's flood management plans recommend removing structures in the floodway.
- Opinions were mixed regarding the importance of historic preservation of the bandshell structure. In the online survey, a plurality (46%) of people indicated preservation was important, 37% indicated it was unimportant, and 18% responded neutral.
- Past and potential future users of the bandshell as well as the public, indicated that improvements are required to restart hosting events at West Park. Necessary improvements include bathrooms, a larger stage and backstage, increased accessibility, improved acoustics, and removing the barrier between the audience and the stage.

AGENDA

1

INTRODUCTION

2

ENGAGEMENT SUMMARY

3

DISCUSSION