


For: Jimmy John's Gourmet Sandwiches - Ann Arbor, MI

Quantity: One (1) internally illuminated Monument sign

Vinyl Colors: 3630-22 Black and 3630-83 Regal Red

16.5 s. ft.

This is an original unpublished drawing confidentially submitted for your personal use in connection with a project being planned for you by Bendsen Signs and Graphics, Inc. It is not to be shown or described to other nor is it to be used reproduced, copied or exhibited in any fashion.

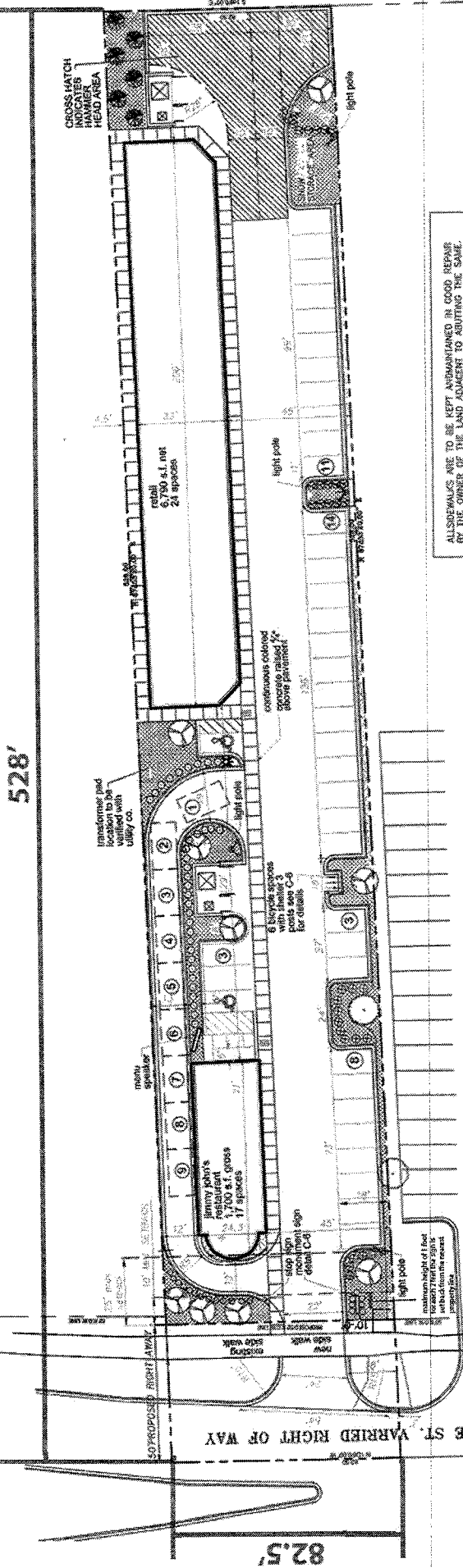
Designer:  Date: 04/16/15
 Bendsen Signs & Graphics, Inc. Sketch No. AMHBR-30534



2901 N. Woodford St. Decatur, IL 62528
 301 N. Nell St., Suite 400 Champaign, IL 61820

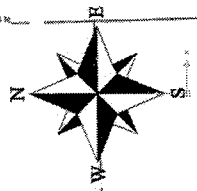
PH: 217-877-8345 (Decatur)
 PH: 217-238-1888 (Champaign)
 FAX: 217-877-2347

528'



ALL SIDEWALKS ARE TO BE KEPT MAINTAINED IN GOOD REPAIR BY THE OWNER OF THE LAND ADJACENT TO ADJUTING THE SAME. PRIOR TO THE ISSUANCE OF THE FIRST CERTIFICATE OF OCCUPANCY FOR THIS USE, THE ALL SIDEWALKS ADJACENT TO THIS USE OF REPAIR MUST BE REPAIRED IN ACCORDANCE WITH CITY STANDARDS.

PROPOSED
MORTONS



This is an original unpublished drawing confidentially submitted for your personal use in connection with a project being planned for you by Bendsen, Signs and Graphics, Inc. It is not to be shown, re-described to other nor is it to be used, reproduced, copied or exhibited in any fashion.

Designer: *[Signature]*
Date: 04/20/15

Bendsen
Signs & Graphics, Inc. Sketch No. ANHR_305C

For: **Jimmy John's Gourmet Sandwiches - Ann Arbor, MI**
 Quantity: **One (1) internally illuminated pylon sign**
 Vinyl Colors: **3630-22 Black and 3630-83 Regal Red**

PH: 217-877-8345 (Decatur)
 PH: 217-838-1888 (Champaign)
 FAX: 217-877-2347

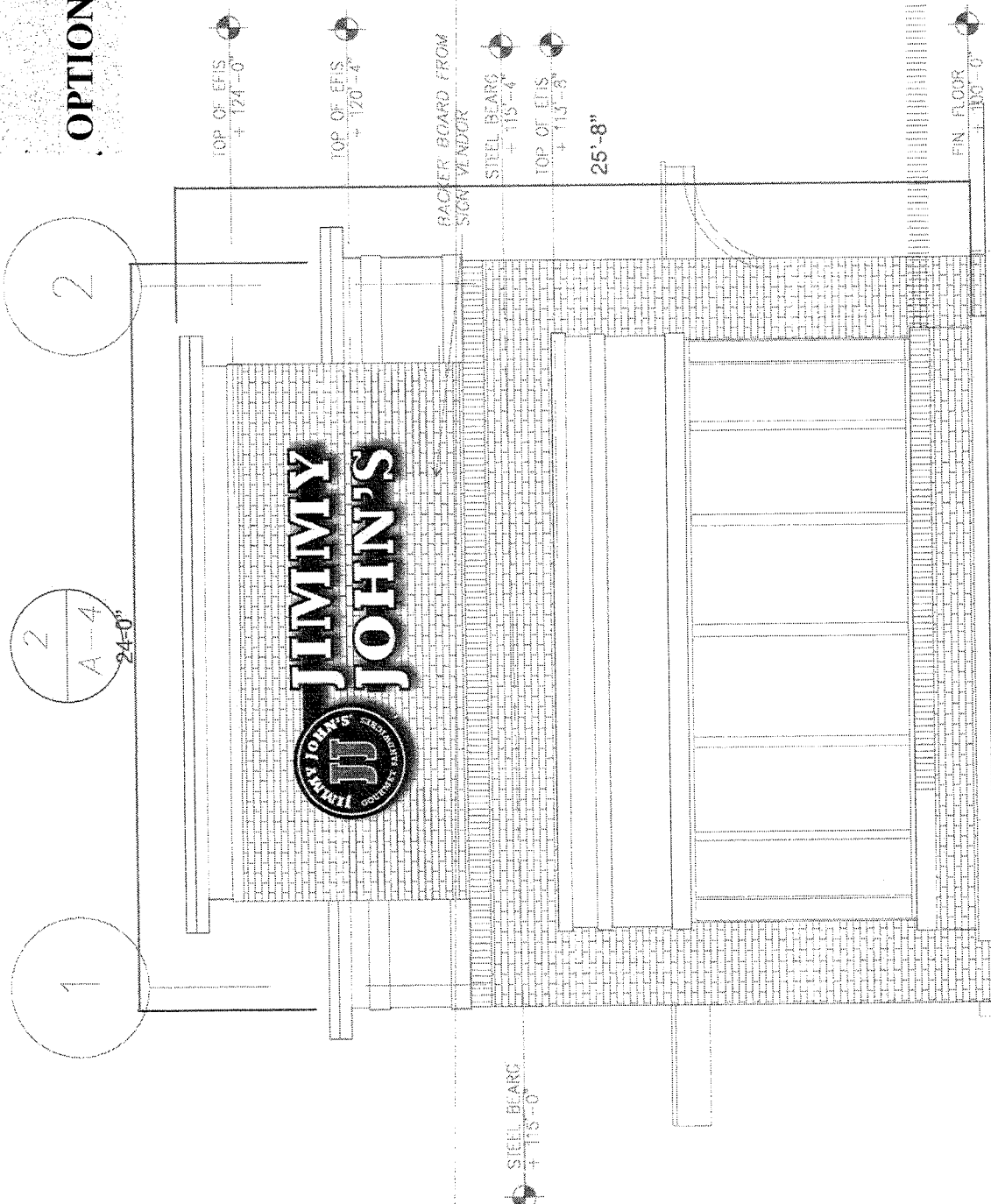


2901 N. Woodford St. Decatur, IL 62526
 301 N. Neil St., Suite 400 Champaign, IL 61820

S. STATE ST. VARRIED RIGHT OF WAY

82.5'

OPTION B



This is an original unpublished drawing confidentially submitted for your personal use in connection with a project being planned for you by Bendisen Signs and Graphics, Inc. It is not to be shown or described to other nor is it to be used, reproduced, copied or exhibited in any fashion.

Designer: *[Signature]*
 Date: 04-16-15
 Sketch No. ANHR 300

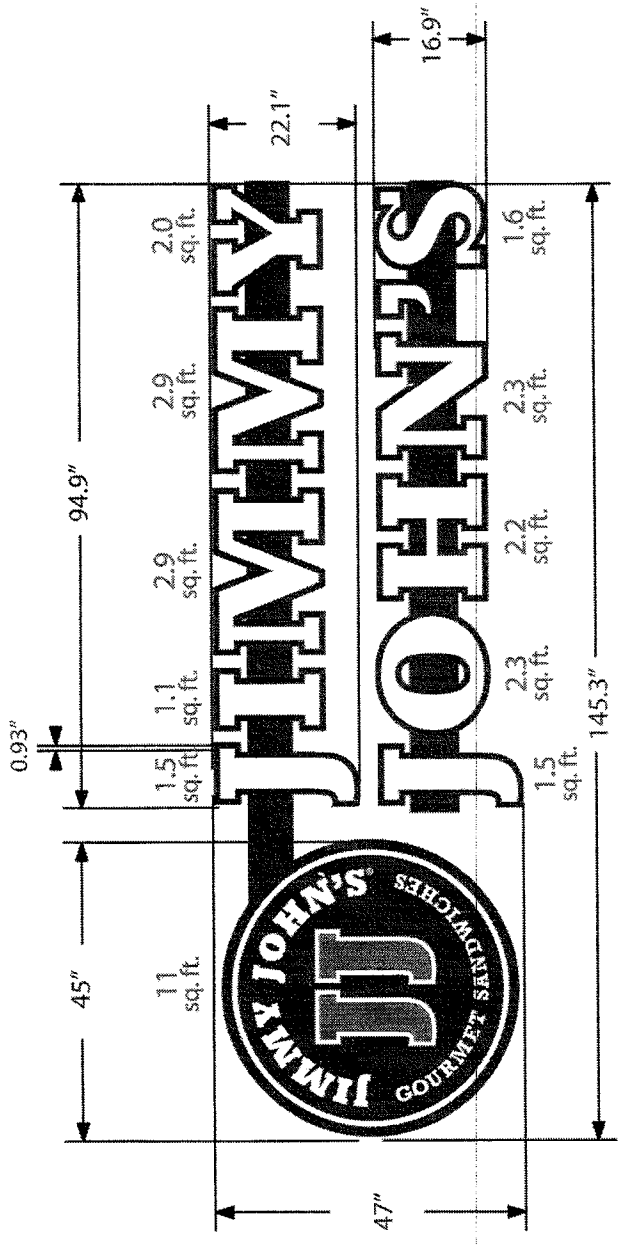
WEST ELEVATION

For: Jimmy John's Gourmet Sandwiches - Ann Harbor, MI
 Quantity: One (1) set of internally illuminated channel letters mounted to black raceways
 Vinyl Colors: 3630-22 Black and 3630-83 Regal Red
 Non-Illuminated awning using Sunbrella 4608 Black and 4666 Red material

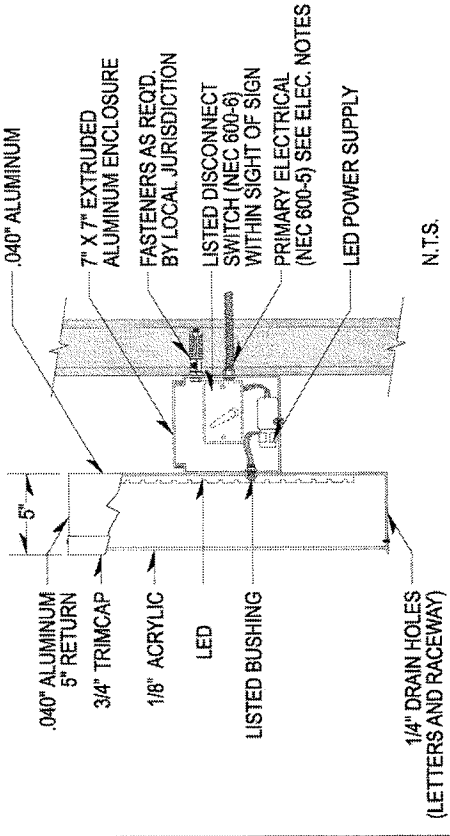


PH: 217-877-8345
 FAX: 217-877-8347

2901 N. Woodford St. Decatur, IL 62526



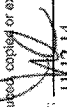
31.3 sq. ft.



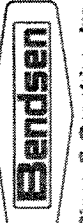
LED (US LED)	FACE	RETURN	RETAINER	BACKS	RACEWAY	LED (US LED)	FACE	RETURN	RETAINER	BACKS	RACEWAY	POWER SUPPLY	KICKER MATERIAL	SCREWS	MOUNTING	SWITCH		
COLOR	THICKNESS	VINYL	DEPTH	COLOR	GAUGE	COLOR	COLOR	COLOR	COLOR	COLOR	COLOR	60 W POWER SUPPLY	ALUMINUM	HGT.	INTERNAL	EXTERNAL	DISCONNECT/TOGGLE	
WHITE	1/8"	3"	3/4"	BLACK	.063"	BLACK	TRIM CAP	ALUMINUM	.063"	BLACK	1/4" X 2" ALUM. BAR	ADVANCE	TO BE DETERMINED	#8 X 1/2" PHILLIPS HD.	TO MATCH TRIMCAP	-	-	
PER STYLE	1/8" BLACK VINYL, DIMETER AROUND THE LETTER FACE.	BLACK PRE-COAT	.040" X 5.3" COIL	BLACK	7" X 7" X .063"	BLACK	ALUMINUM	7" X 7" X .063"	BLACK	1/4" X 2" ALUM. BAR	60 W POWER SUPPLY	ALUMINUM	TO BE DETERMINED	#8 X 1/2" PHILLIPS HD.	TO MATCH TRIMCAP	-	DISCONNECT/TOGGLE	
GAUGE	SIZE	TYPE	MATERIAL	GAUGE	SIZE	COLOR	MOUNTING											

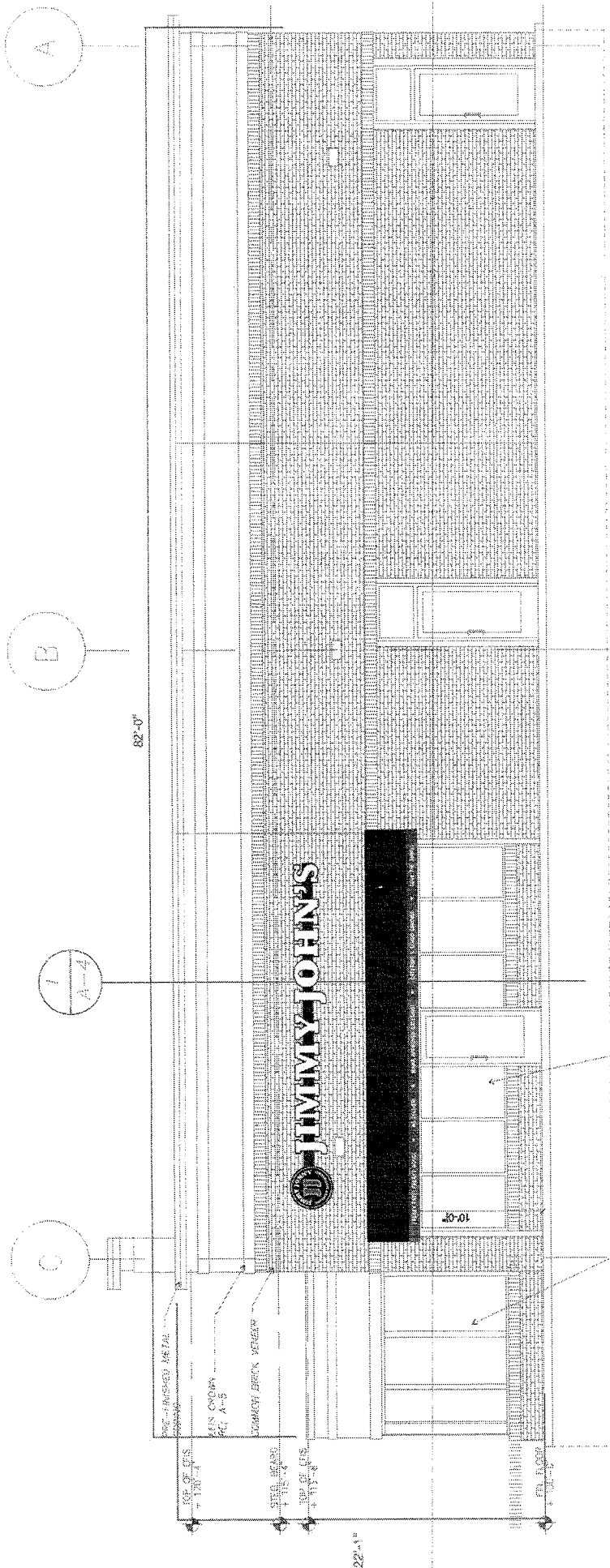
*SPST DISCONNECT SWITCH LOCATE ON RACEWAY.
 *2 WEEP HOLES PER LETTER REQUIRED (3/8" DIA.)
 *ALL ELECTRICAL O.U.S. LOCATED FOR RACEWAY OR REMOTE APPLICATION.
 *CABLE REQUIRED.

This is an original unpublished drawing confidentially submitted for your personal use in connection with a project being planned for you by Bendson Signs and Graphics, Inc. It is not to be shown, resubmitted to other nor is it to be used, reproduced, copied or exhibited in any fashion.

Designer: 
 Date: 11/2/14
 Bendson Signs & Graphics, Inc. Sketch No. AHBR-300a

For: Jimmy John's Gourmet Sandwiches - Ann Harbor, MI
 Quantity: One (1) set of internally illuminated channel letters mounted to black raceways
 Vinyl Colors: 3630-22 Black and 3630-83 Regal Red
 Non-Illuminated awning using Sunbrella 4608 Black and 4666 Red material

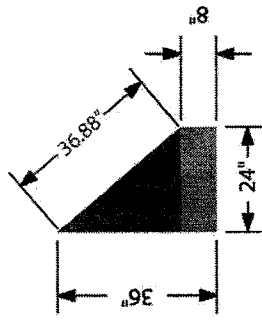

 PH: 217-877-2345
 FAX: 217-877-2347
 2901 N. Woodford St. Decatur, IL 62526



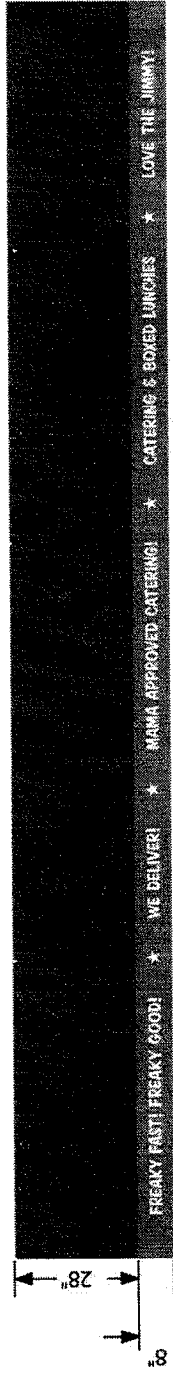
SOUTH ELEVATION

23'-4"

SIDE VIEW



6.33 sq. ft



This is an original unpublished drawing confidentially submitted for your personal use in connection with a project being planned for you by Bendisen Signs and Graphics, Inc. It is not to be shown or described to other nor is it to be used reproduced, copied or published in any fashion.

Designer: *[Signature]*
 Date: 04/16/15
 Bendisen Signs & Graphics, Inc. Sketch No. ANHBR-303

For: Jimmy John's Gourmet Sandwiches - Ann Harbor, MI
 Quantity: One (1) set of internally illuminated channel letters mounted to black raceway
 Vinyl Colors: 3630-22 Black and 3630-83 Regal Red
 Non-Illuminated awning using Sunbrella 4608 Black and 4666 Red material

PH: 817-877-8346
 FAX: 817-877-8347

2901 N. Woodford St. Decatur, IL 62526

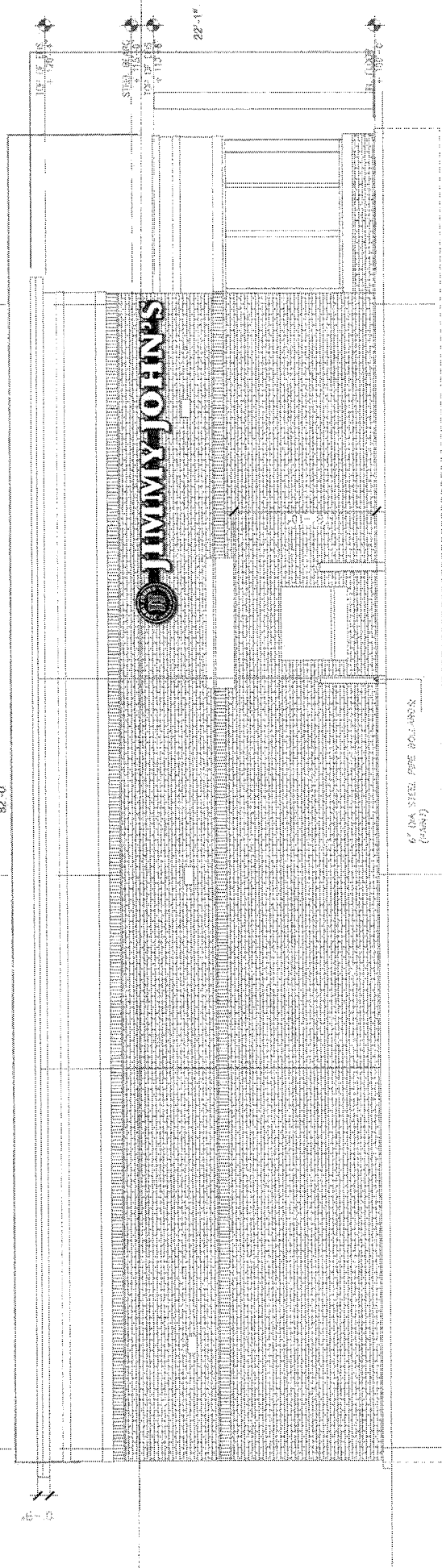
C

B

A

82'-0"

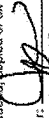
22'-4"



6" DIA. STEEL PIPE BALUNES
(2x4)

NORTH ELEVATION

This is an original unpublished drawing confidentially submitted for your personal use in connection with a project being planned for you by Bendsen Signs and Graphics, Inc. It is not to be shown or described to other nor is it to be used, reproduced, copied or exhibited in any fashion.

Designer: 
 Date: 04-16-15
 Sketch No. A-HBR-304



For: Jimmy John's Gourmet Sandwiches - Ann Harbor, MI
 Quantity: One (1) set of internally illuminated channel letters mounted to black raceway
 Vinyl Colors: 3630-22 Black and 3630-83 Regal Red

PH: 217-877-2346
 FAX: 217-877-2347



2901 N. Woodford St. Decatur, IL 62526