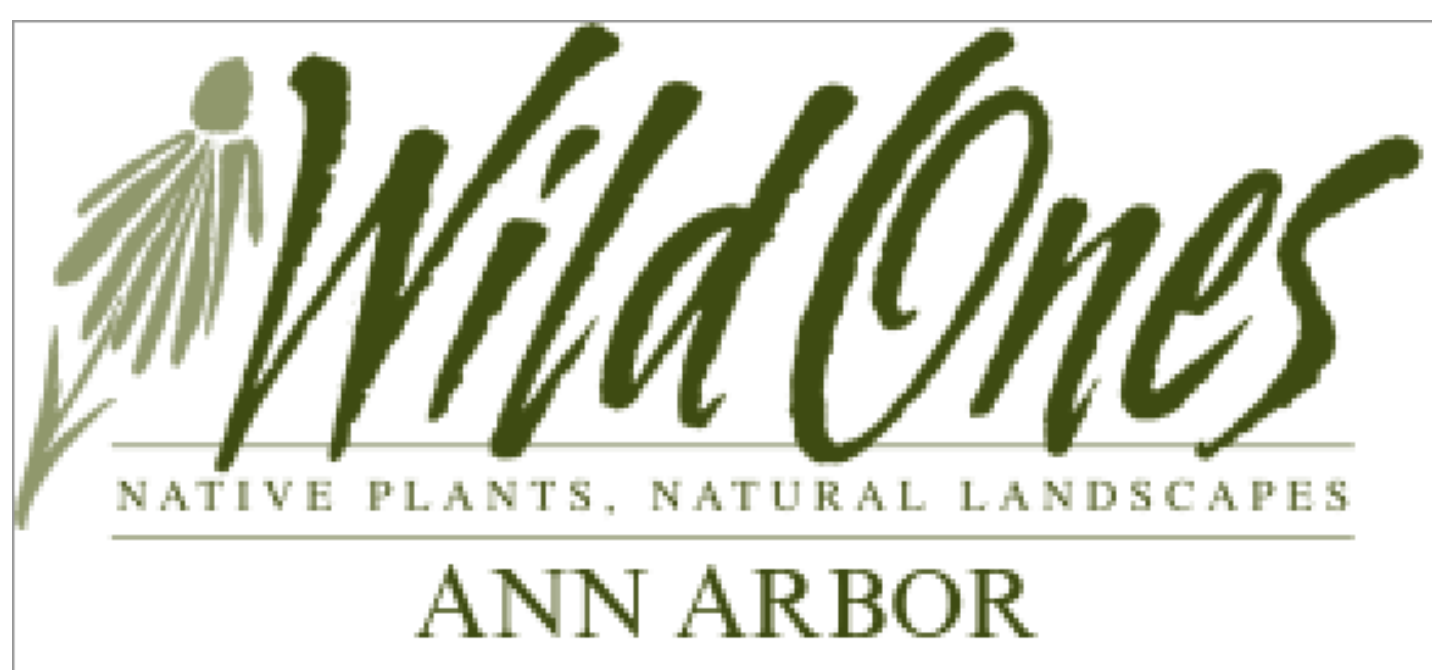


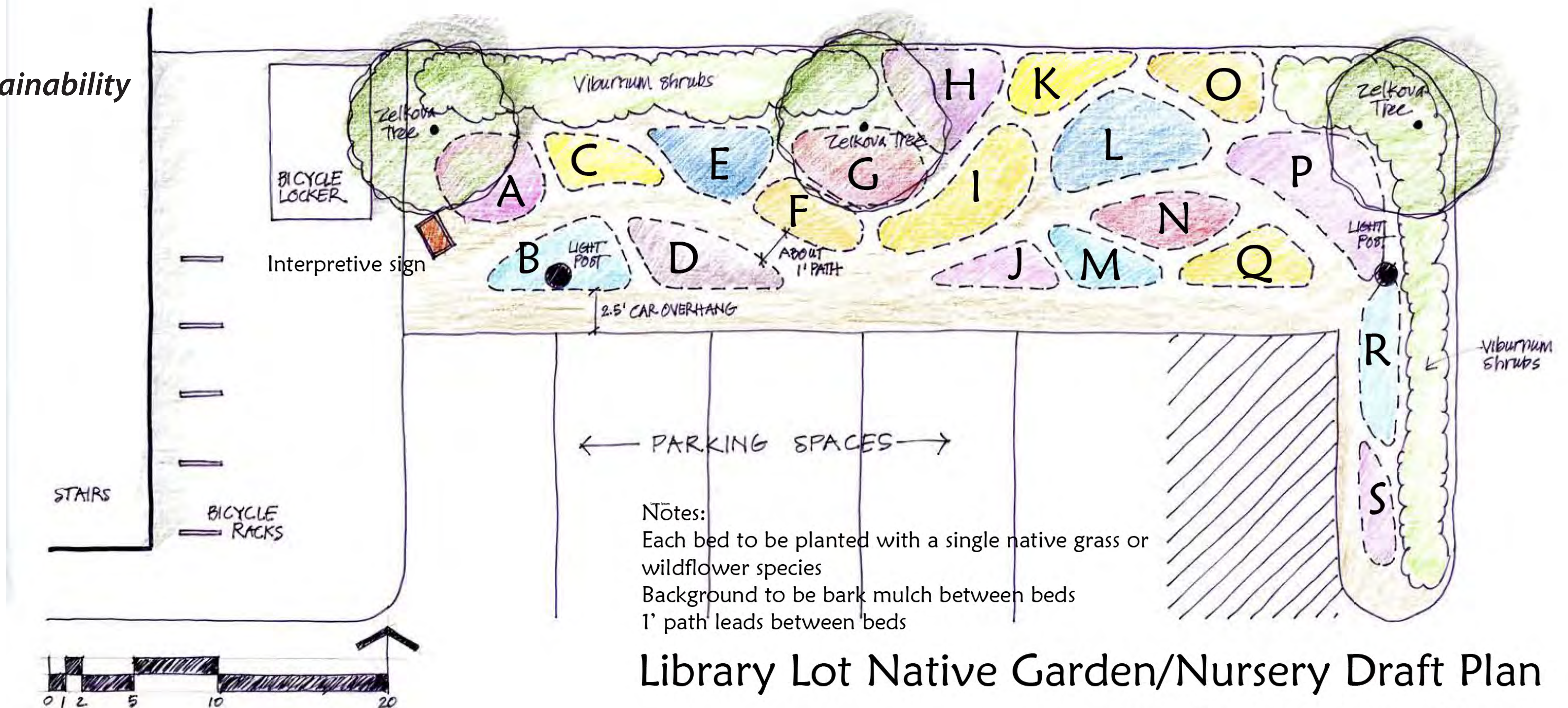
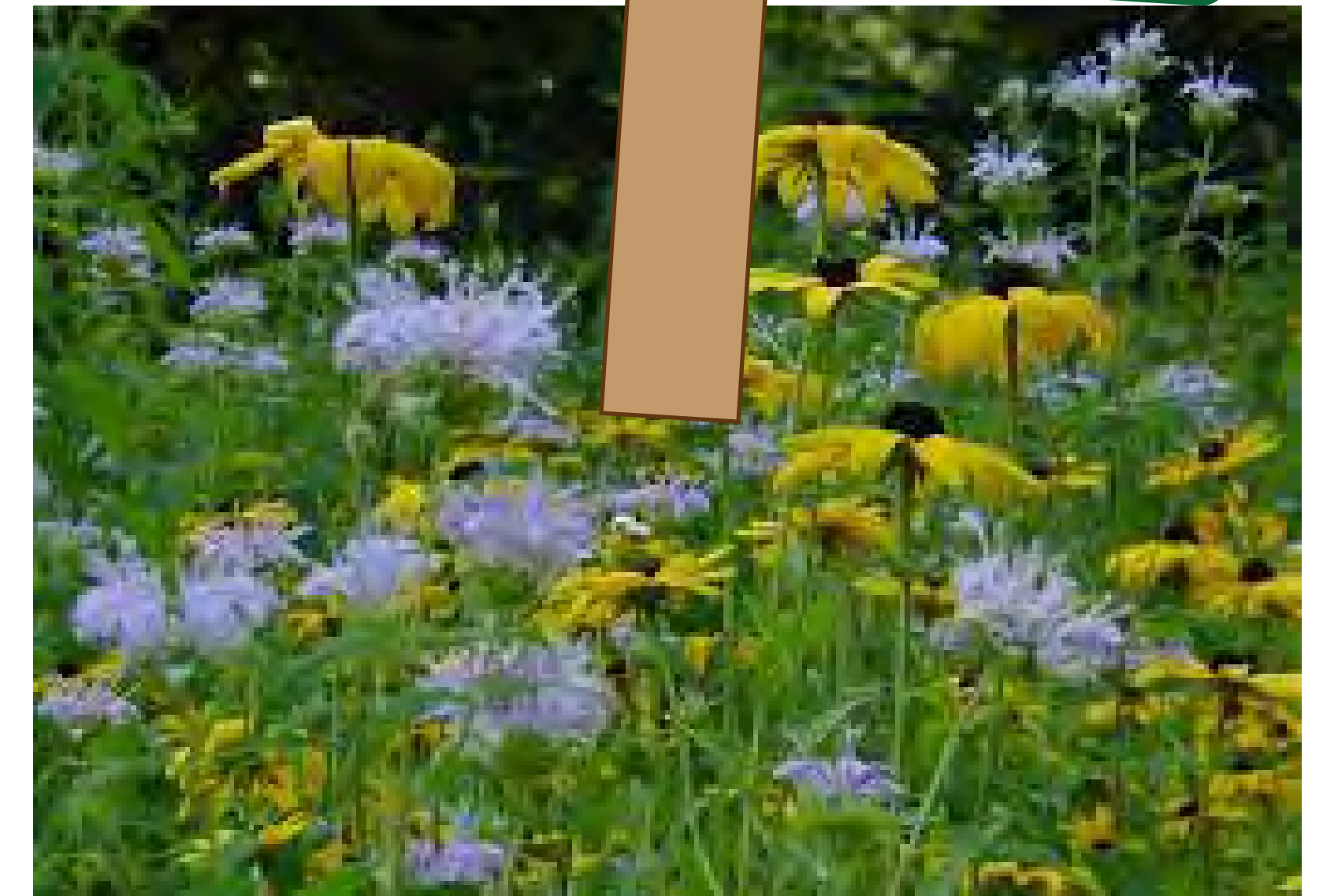
Nature in the heart of the city

Community volunteers have been working to plant these garden plots with native and near-native plants to provide important food and habitat resources for pollinators and birds. In addition to their habitat value, these plants provide beneficial functions in filtering stormwater runoff and keeping our city cooler. These plants also remind us of the prairies, oak openings and woodlands that are part of our natural heritage here in Ann Arbor and what makes our place on the planet unique.

Robert E. Grese, FASLA, FCELA
 Professor Emeritus of Environment and Sustainability



Concept for a simple demonstration sign for the Gardens



Library Lot Native Garden/Nursery Draft Plan

Ann Arbor Wild Ones Chapter
 Bob Grese May 2022