

QUINN EVANS
ARCHITECTS

219 1/2 N Main Street
Ann Arbor, Michigan 48104
v 734 663 5888 f 734 663 5044
www.quinn-evans.com

MERCURY STUDIOS, INC.
2548 W. CORTEZ ST.
CHICAGO, IL
773-395-8216

Sudworth Building

Ann Arbor, Michigan

QEA No. 06151.00
Owner No. XXXX

Sheet Title

1ST FLOOR SEATING PLAN (PHASE 3)

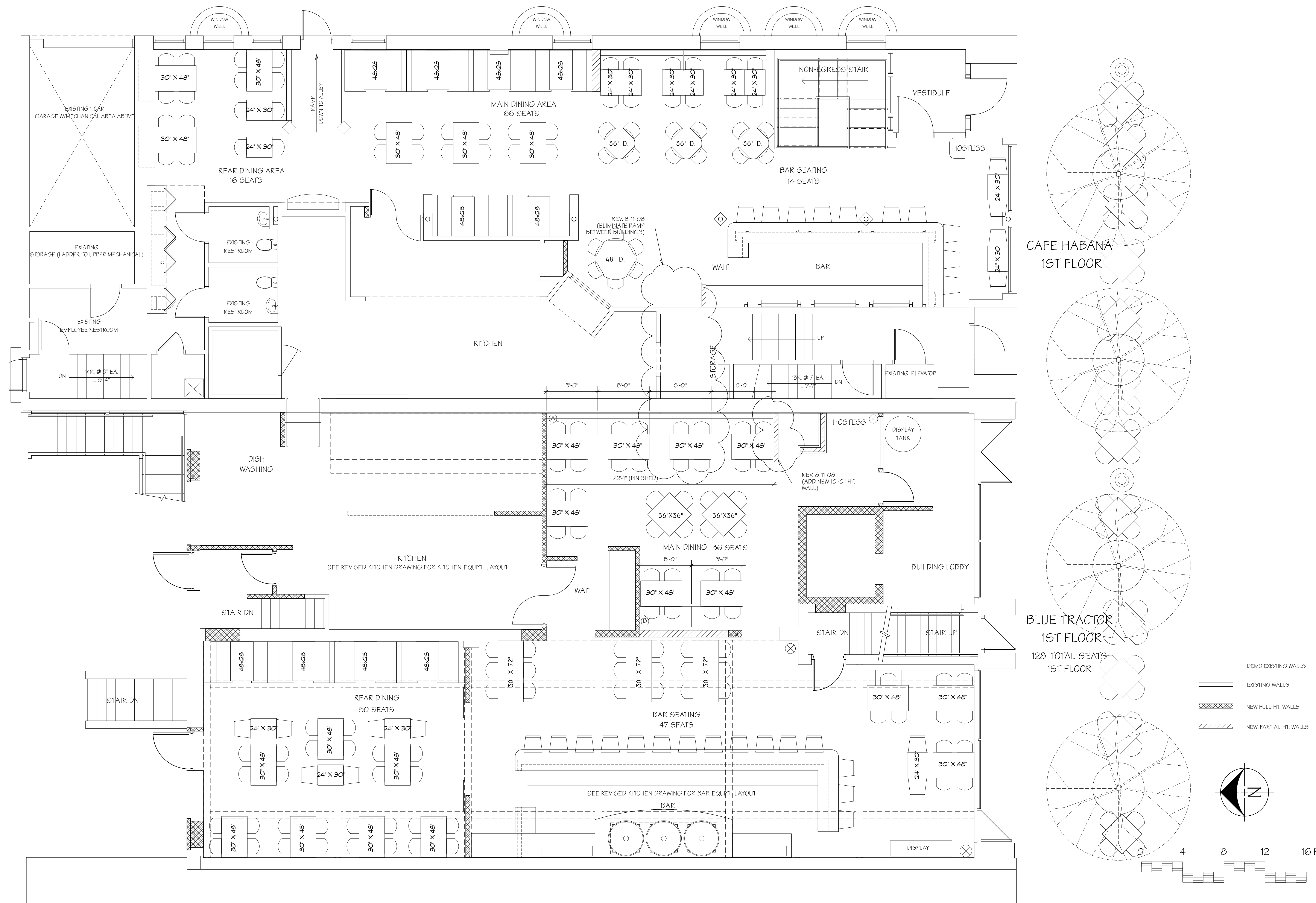
REV. 12-4-07

REV. 6-3-08

| NO. | TITLE | DATE |
|-----|-------|------|
| | XX | |
| | | |
| | | |
| | | |
| | | |
| | | |
| | | |
| | | |
| | | |

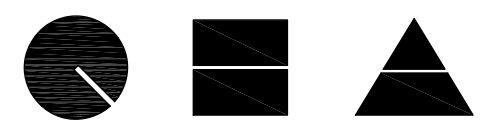
FILE NAME: XX.dwg

A802



1 2 3 4 5 6 7 8 9 10 11 12 13 14 15 16 17 18

T
S
R
Q
P
N
M
L
K
J
H
G
F
E
D
C
B
A



QUINN EVANS
ARCHITECTS

219 1/2 N Main Street
Ann Arbor, Michigan 48104
v 734 663 5888 f 734 663 5044
www.quinnevans.com

MERCURY STUDIOS, INC.
2548 W. CORTEZ ST.
CHICAGO, IL
773-395-8216

Sudworth Building

Ann Arbor, Michigan

QE|A No. 06151.00
Owner No. XXXX

Sheet Title

BASEMENT SEATING PLAN
(PHASE 3)

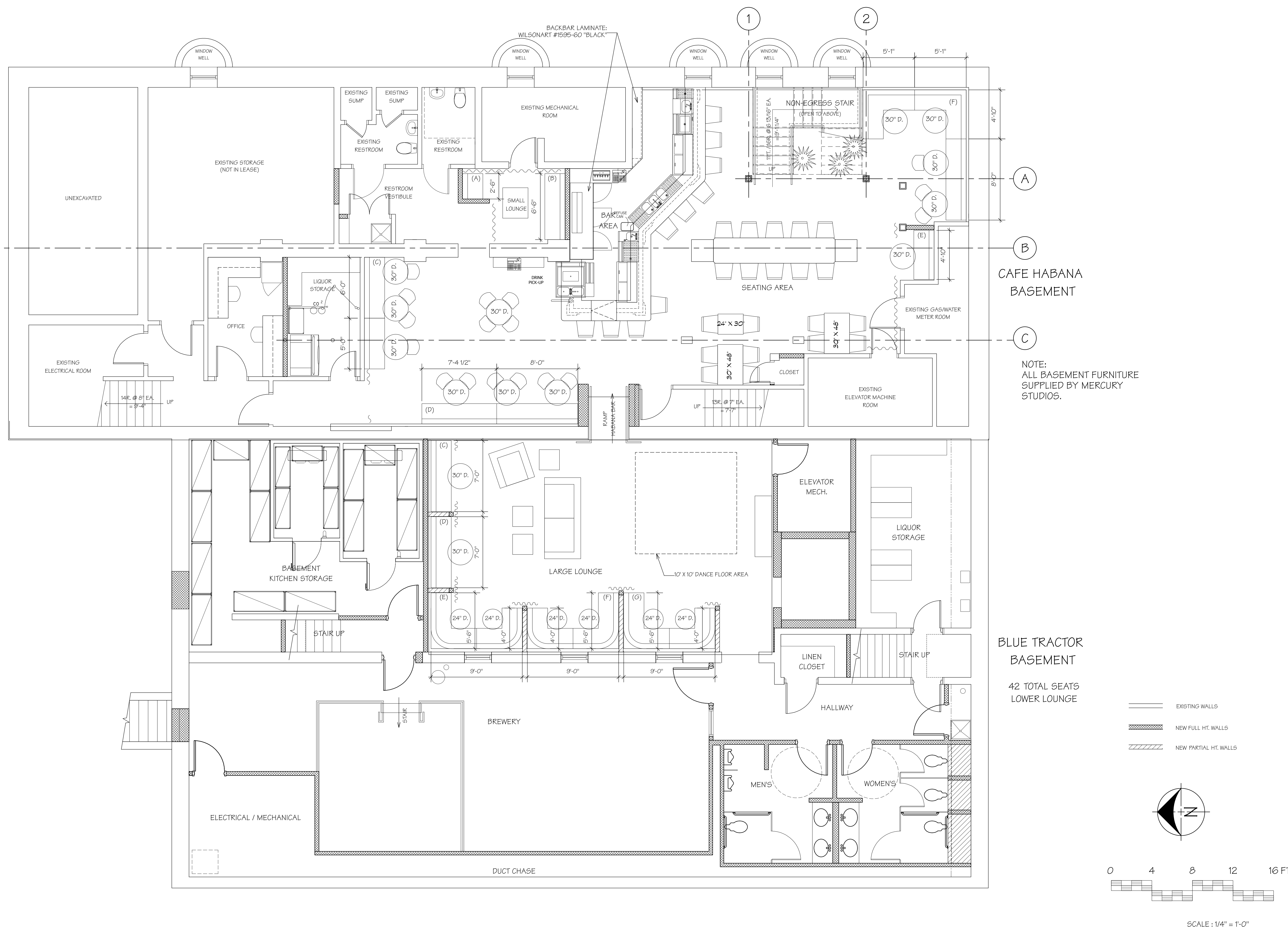
REV. 12-4-07

REV. 6-3-08

| NO. | TITLE | DATE |
|-----|-------|------|
| | XX | |
| | | |
| | | |
| | | |
| | | |
| | | |
| | | |
| | | |
| | | |

FILE NAME: XX.dwg

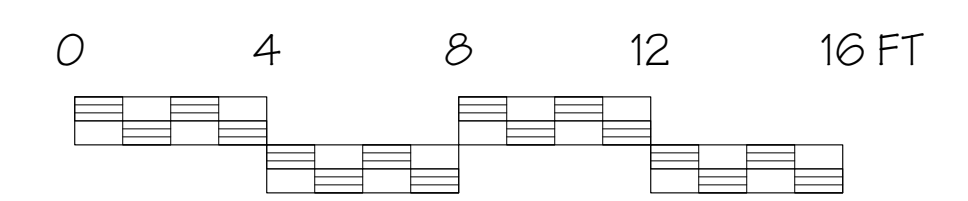
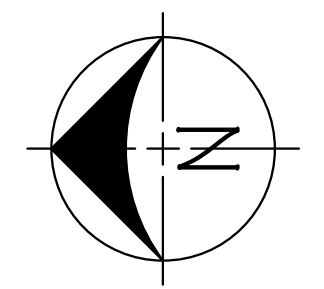
A803



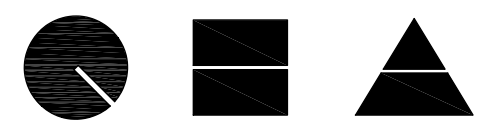
NOTE:
ALL BASEMENT FURNITURE
SUPPLIED BY MERCURY
STUDIOS.

BLUE TRACTOR
BASEMENT
42 TOTAL SEATS
LOWER LOUNGE

- EXISTING WALLS
- NEW FULL HT. WALLS
- NEW PARTIAL HT. WALLS



SCALE : 1/4" = 1'-0"



QUINN EVANS
ARCHITECTS

219 1/2 N Main Street
Ann Arbor, Michigan 48104
v 734 663 5888 f 734 663 5044
www.quinnevans.com

MERCURY STUDIOS, INC.
2548 W. CORTEZ ST.
CHICAGO, IL
773-395-8216

**Sudworth
Building**

Ann Arbor, Michigan

QE|A No. 06151.00
Owner No. XXXX

**Sheet
Title**

1ST FLOOR
RC PLAN
(PHASE 3)

REV. 12-4-07

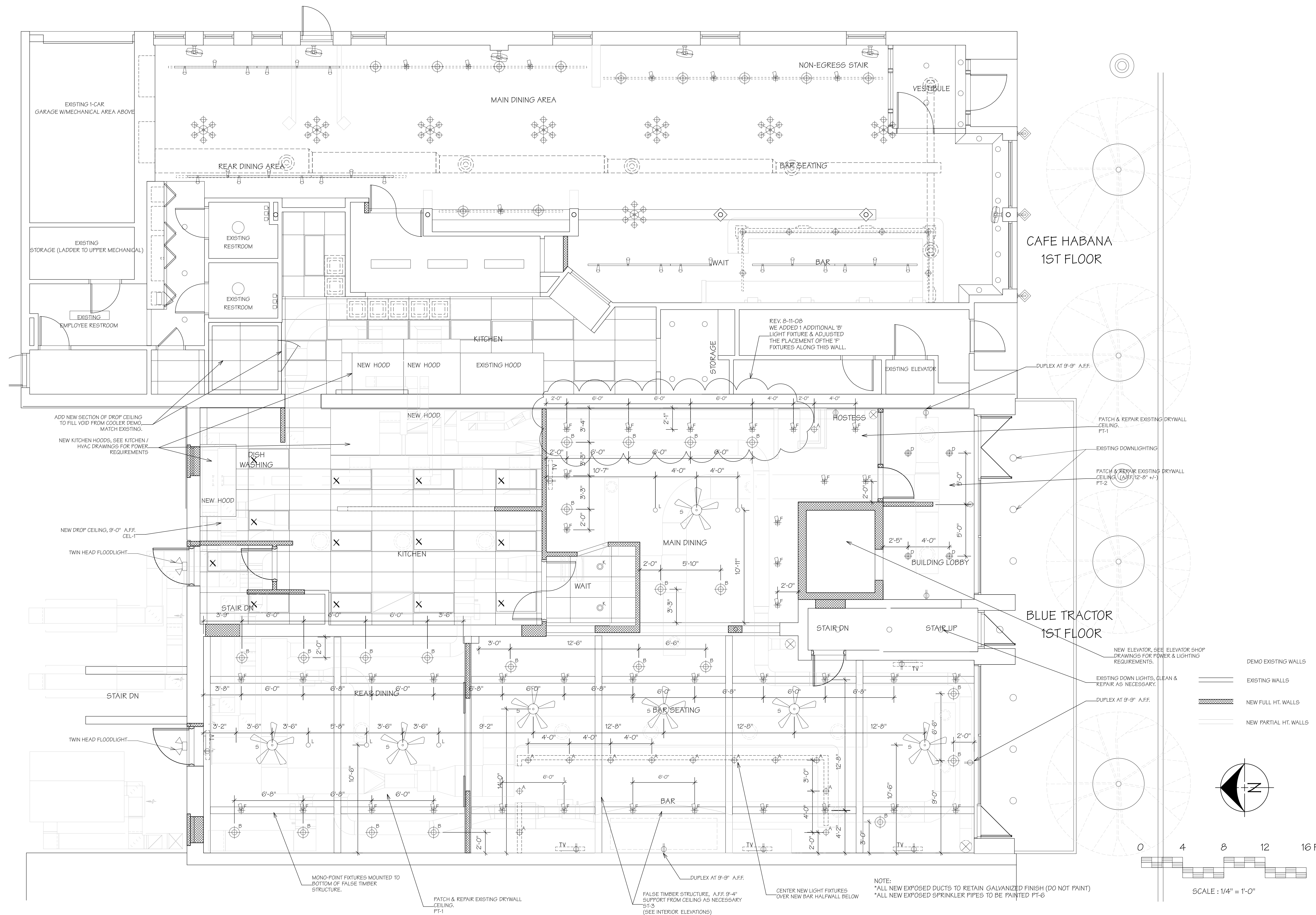
REV. 6-3-08

NO. TITLE DATE

XX

FILE NAME: XX.dwg

A804



1 2 3 4 5 6 7 8 9 10 11 12 13 14 15 16 17 18

T
S
R
Q
P
N
M
L
K
J
H
G
F
E
D
C
B
A