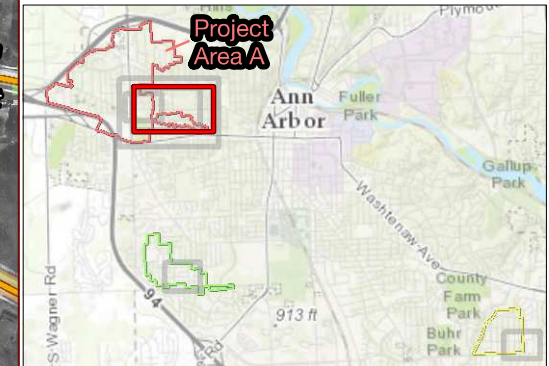


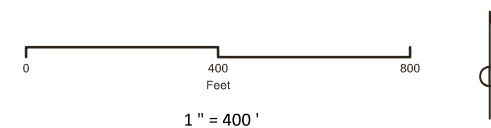


Ann Arbor Sanitary Sewer Improvements

Huron West Park Sewer



- Improvement Areas**
- Area A (Red outline)
 - Area D (Yellow outline)
 - Area E (Green outline)
- Proposed Sanitary Mains - Size**
- 12" (Pink line)
 - 18" (Orange line)
 - 21" (Light Green line)
- Sanitary Main - Type**
- Collector (Yellow line with arrows)
 - Force Main (Red line with arrows)
 - Storm Manhole (Green circle)
 - Storm Discharge Point (Green diamond)
 - Storm Catchbasin (Green square)
 - Storm Main (Green line)
- Project Areas**
- Sanitary Manhole (Yellow circle)
 - Project Area A (Red outline)
 - Project Area D (Yellow outline)
 - Project Area E (Green outline)



Source: Data provided by Washtenaw County and the City of Ann Arbor. OHM Advisors does not warrant the accuracy of the data and/or the map. This document is intended to depict the approximate spatial location of the mapped features within the Community and all use is strictly at the user's own risk.

Coordinate System: NAD 1983 StatePlane Michigan South FIPS 2113 Feet Intl

Map Published: February 16, 2017