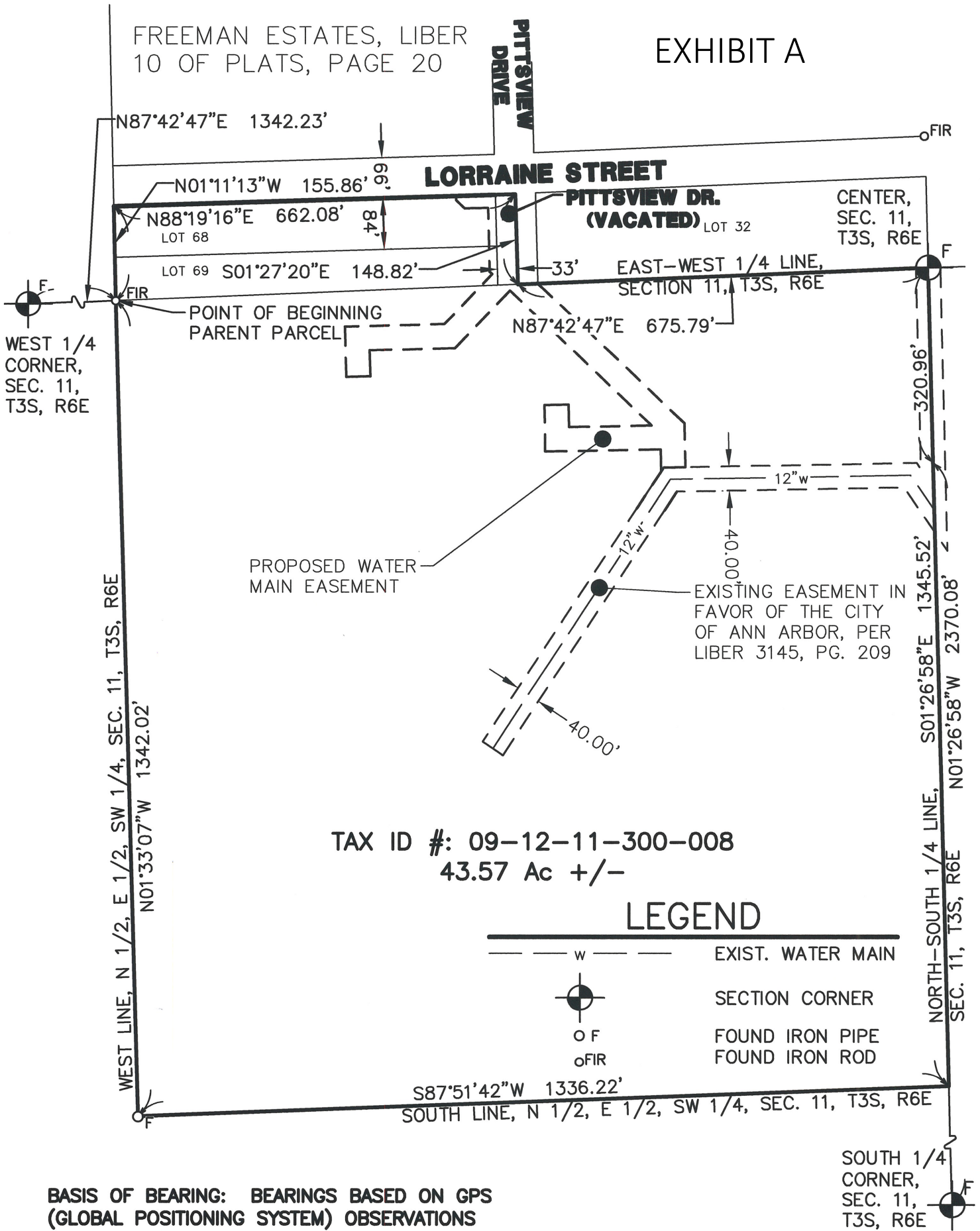


**SURVEY OF A PROPOSED WATER MAIN EASEMENT LOCATED IN
THE SW 1/4 OF SECTION 11, TOWN 3 SOUTH, RANGE 6 EAST,
CITY OF ANN ARBOR, WASHTENAW COUNTY, MICHIGAN**



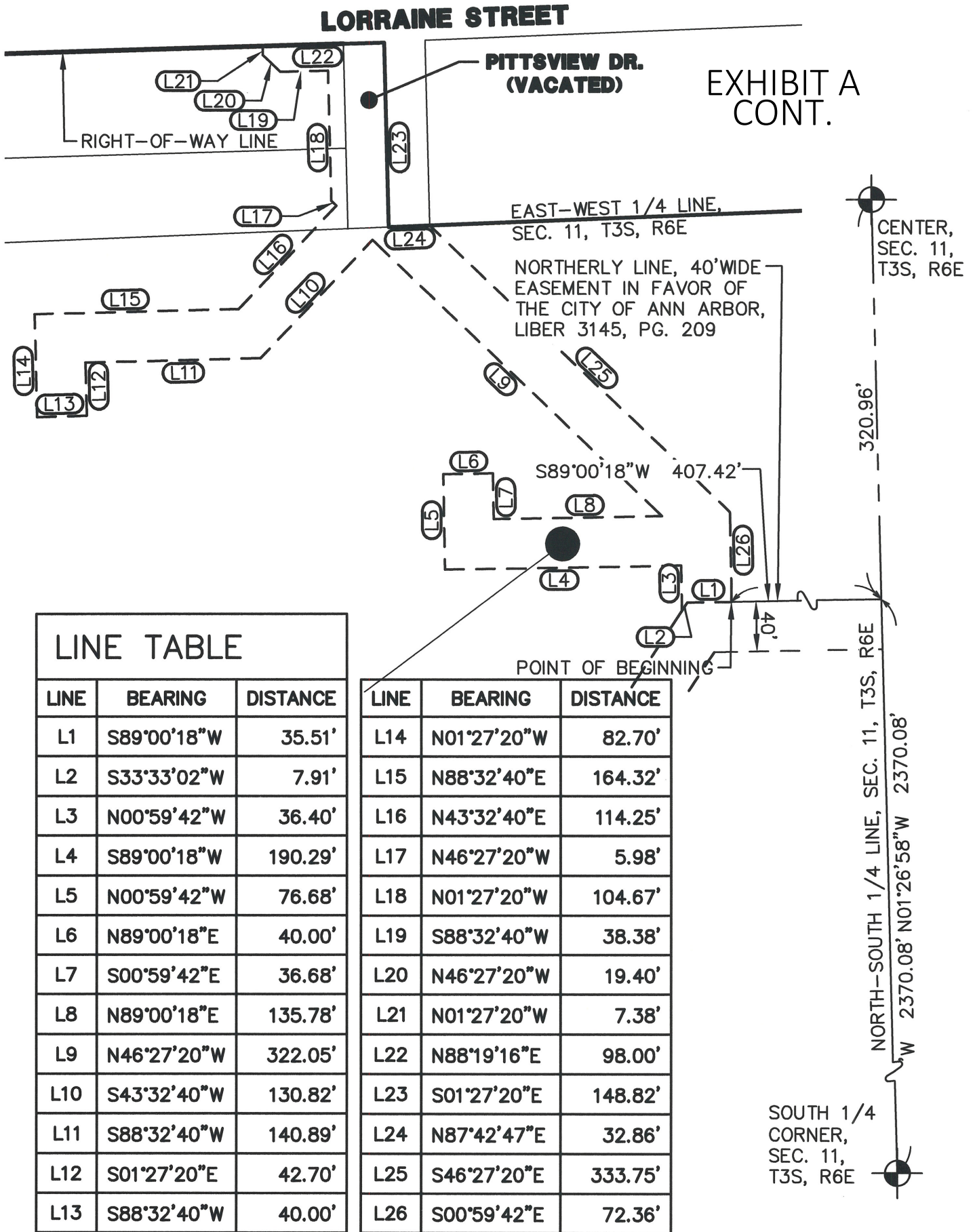
FREEMAN ESTATES, LIBER
10 OF PLATS, PAGE 20

EXHIBIT A



CLIENT: MITCHELL ELEMENTARY	DATE: July 11, 2016	
JOB NO.: 16025	SHEET 1 OF 4	
SECTION: 11 TWN: 03S RANGE: 06E	SCALE: 1in. = 200 ft.	
CITY OF ANN ARBOR	BOOK: N/A	
WASHTENAW COUNTY, MICHIGAN	BY: pk	
<p align="center">M I D W E S T E R N C O N S U L T I N G</p> <p align="center">3815 Plaza Drive Ann Arbor, Michigan 48108 (734) 995-0200 • www.midwesternconsulting.com Land Development • Land Survey • Institutional • Municipal Wireless Communications • Transportation • Landfill Services</p>		

SURVEY OF A PROPOSED WATER MAIN EASEMENT LOCATED IN THE SW 1/4 OF SECTION 11, TOWN 3 SOUTH, RANGE 6 EAST, CITY OF ANN ARBOR, WASHTENAW COUNTY, MICHIGAN



LINE TABLE		
LINE	BEARING	DISTANCE
L1	S89°00'18"W	35.51'
L2	S33°33'02"W	7.91'
L3	N00°59'42"W	36.40'
L4	S89°00'18"W	190.29'
L5	N00°59'42"W	76.68'
L6	N89°00'18"E	40.00'
L7	S00°59'42"E	36.68'
L8	N89°00'18"E	135.78'
L9	N46°27'20"W	322.05'
L10	S43°32'40"W	130.82'
L11	S88°32'40"W	140.89'
L12	S01°27'20"E	42.70'
L13	S88°32'40"W	40.00'

LINE	BEARING	DISTANCE
L14	N01°27'20"W	82.70'
L15	N88°32'40"E	164.32'
L16	N43°32'40"E	114.25'
L17	N46°27'20"W	5.98'
L18	N01°27'20"W	104.67'
L19	S88°32'40"W	38.38'
L20	N46°27'20"W	19.40'
L21	N01°27'20"W	7.38'
L22	N88°19'16"E	98.00'
L23	S01°27'20"E	148.82'
L24	N87°42'47"E	32.86'
L25	S46°27'20"E	333.75'
L26	S00°59'42"E	72.36'

CLIENT: MITCHELL ELEMENTARY	DATE: July 11, 2016
JOB NO.: 16025	SHEET 2 OF 4
SECTION: 11 TWN: 03S RANGE: 06E	SCALE: 1 in. = 100 ft.
CITY OF ANN ARBOR	BOOK: N/A
WASHTENAW COUNTY, MICHIGAN	BY: pk

MIDWESTERN
CONSULTING

3815 Plaza Drive Ann Arbor, Michigan 48108
(734) 995-0200 • www.midwesternconsulting.com

Land Development • Land Survey • Institutional • Municipal
Wireless Communications • Transportation • Landfill Services



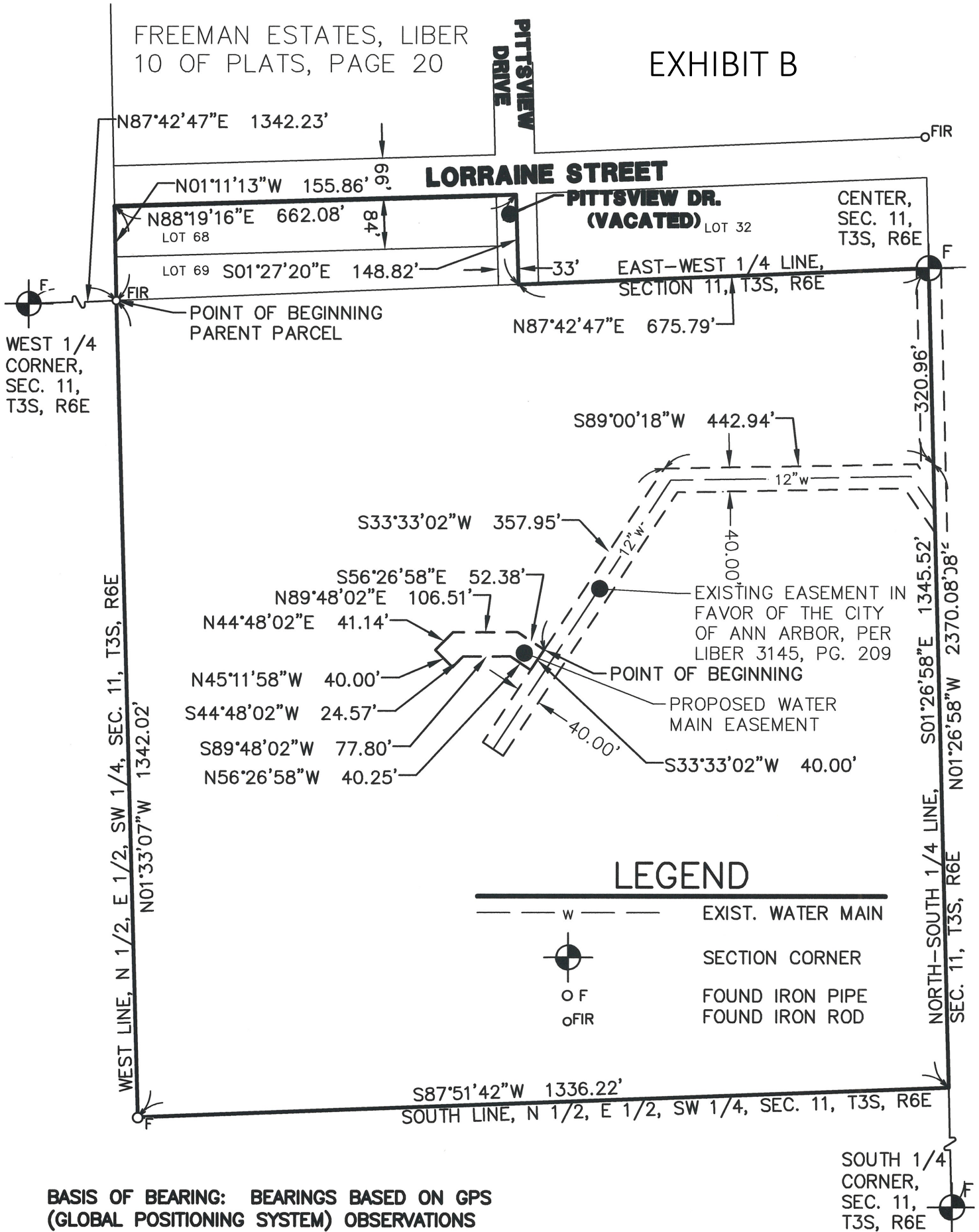
Paul Kovacs

SURVEY OF A PROPOSED WATER MAIN EASEMENT LOCATED IN THE SW 1/4 OF SECTION 11, TOWN 3 SOUTH, RANGE 6 EAST, CITY OF ANN ARBOR, WASHTENAW COUNTY, MICHIGAN



FREEMAN ESTATES, LIBER 10 OF PLATS, PAGE 20

EXHIBIT B



LEGEND

- w EXIST. WATER MAIN
- SECTION CORNER
- OF FOUND IRON PIPE
- OFIR FOUND IRON ROD

BASIS OF BEARING: BEARINGS BASED ON GPS (GLOBAL POSITIONING SYSTEM) OBSERVATIONS

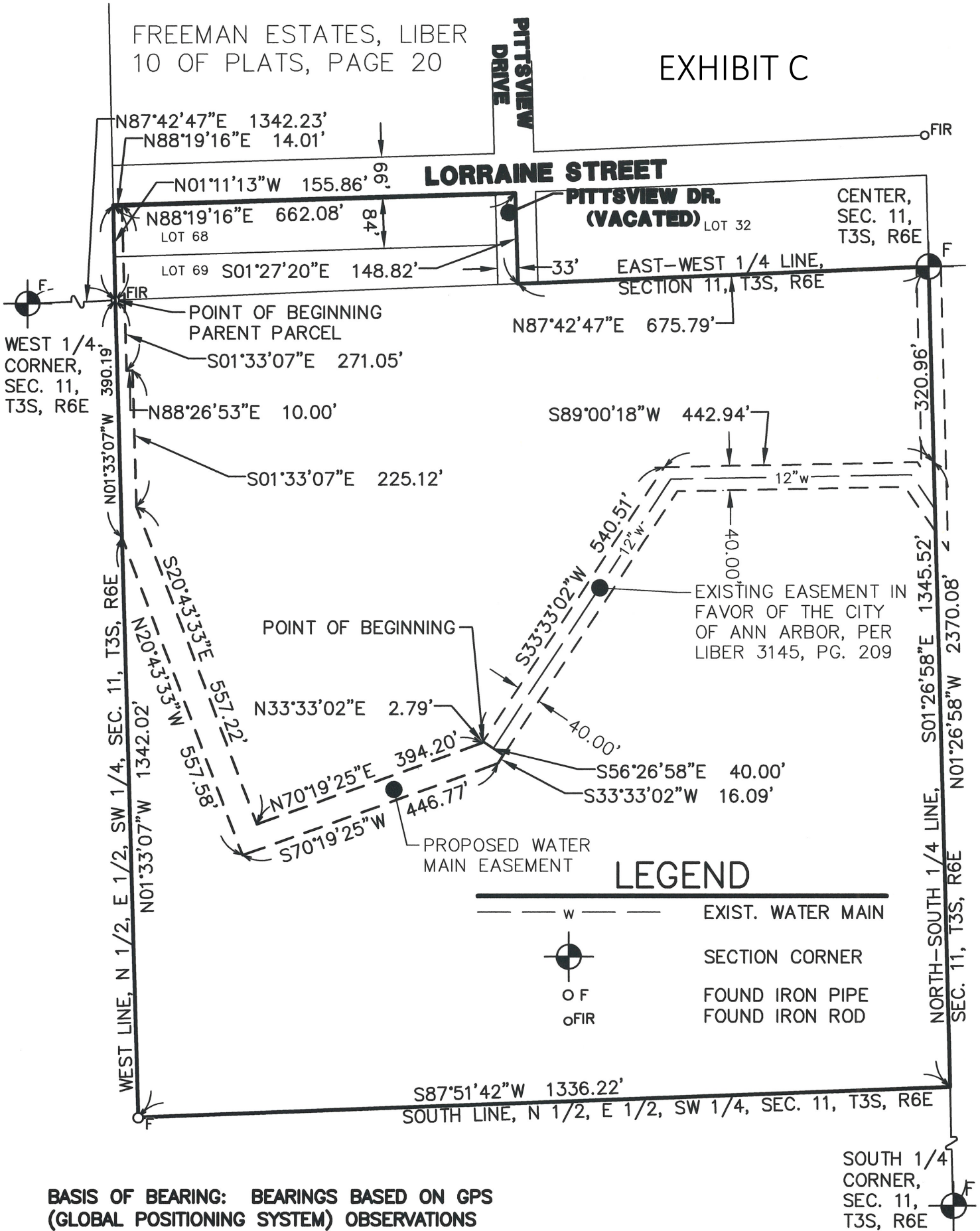
CLIENT: MITCHELL ELEMENTARY	DATE: July 11, 2016	
JOB NO.: 16025	SHEET 1 OF 2	
SECTION: 11 TWN: 03S RANGE: 06E	SCALE: 1in.= 200 ft.	
CITY OF ANN ARBOR	BOOK: N/A	
WASHTENAW COUNTY, MICHIGAN	BY: pk	
<p>MIDWESTERN CONSULTING 3815 Plaza Drive Ann Arbor, Michigan 48108 (734) 995-0200 • www.midwesternconsulting.com Land Development • Land Survey • Institutional • Municipal Wireless Communications • Transportation • Landfill Services</p>		

SURVEY OF A PROPOSED WATER MAIN EASEMENT LOCATED IN THE SW 1/4 AND NW 1/4 OF SECTION 11, TOWN 3 SOUTH, RANGE 6 EAST, CITY OF ANN ARBOR, WASHTENAW COUNTY, MICHIGAN



FREEMAN ESTATES, LIBER 10 OF PLATS, PAGE 20

EXHIBIT C



BASIS OF BEARING: BEARINGS BASED ON GPS (GLOBAL POSITIONING SYSTEM) OBSERVATIONS

CLIENT: MITCHELL ELEMENTARY	DATE: July 11, 2016	
JOB NO.: 16025	SHEET 1 OF 3	
SECTION: 11 TWN: 03S RANGE: 06E	SCALE: 1in. = 200 ft.	
CITY OF ANN ARBOR	BOOK: N/A	
WASHTENAW COUNTY, MICHIGAN	BY: pk	
<p>MIDWESTERN CONSULTING 3815 Plaza Drive Ann Arbor, Michigan 48108 (734) 995-0200 • www.midwesternconsulting.com Land Development • Land Survey • Institutional • Municipal Wireless Communications • Transportation • Landfill Services</p>		