

# Transportation Commission

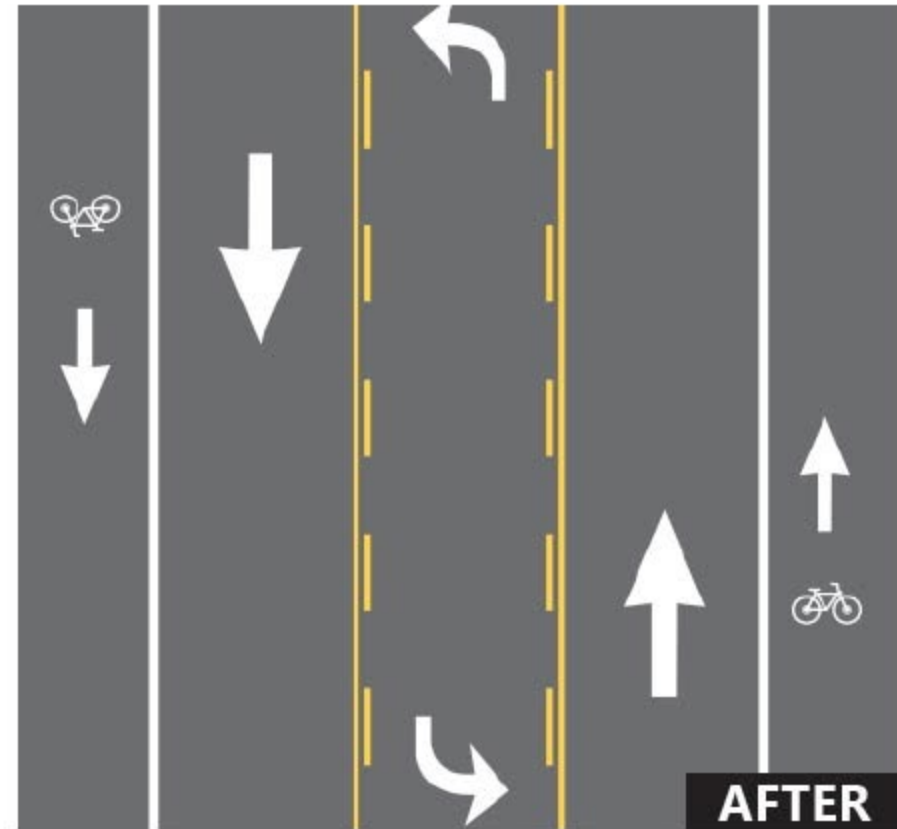
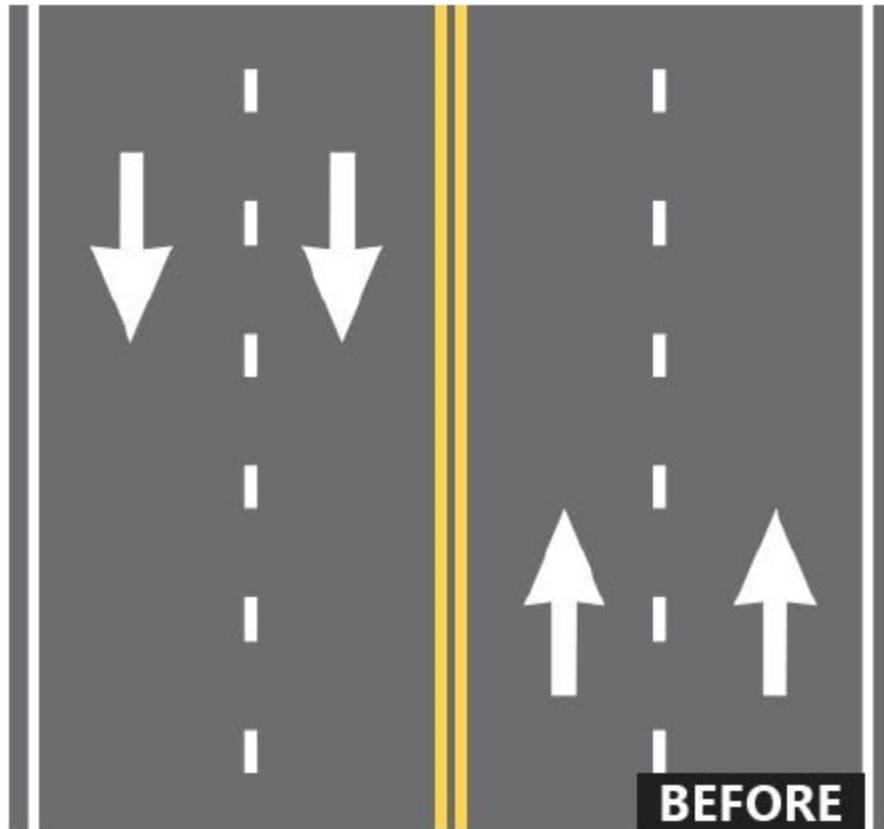
---



Road Reconfigurations/Road Diets Overview  
September 19, 2023

# Road Reconfigurations/Road Diets

## What are they?



# Road Reconfigurations/Road Diets

## What guides our work?

### Resolution R-18-275

- “in conjunction with any proposed lane reduction proposals, city staff shall provide council current traffic volume data including peak hour volumes and volume-to-capacity ratios as well as projections for safety improvements and traffic delays.”

# Road Reconfigurations/Road Diets

## What guides our work?

**ANN ARBOR**  
**MOVING**  
**TOGETHER**  

---

**TOWARDS VISION ZERO**

### Street Reconfiguration

---

Dangerous Behaviors  
**Speed**

#### Description

Street reconfiguration, or road diets have demonstrated safety benefits, often reducing travel speeds and making it easier and safer for people walking to cross the street by simplifying the crossing. A road diet reduces the overall number and/or size of travel lanes on a street and repurposes that space for other uses, such as bicycle infrastructure, dedicated transit facilities, or public space.

# Road Reconfigurations/Road Diets

## What guides our work?





# Road Reconfigurations/Road Diets

## What we've done...

Before



**North Maple**



After



# Road Reconfigurations/Road Diets

## What we've done...

Before



South Main

After

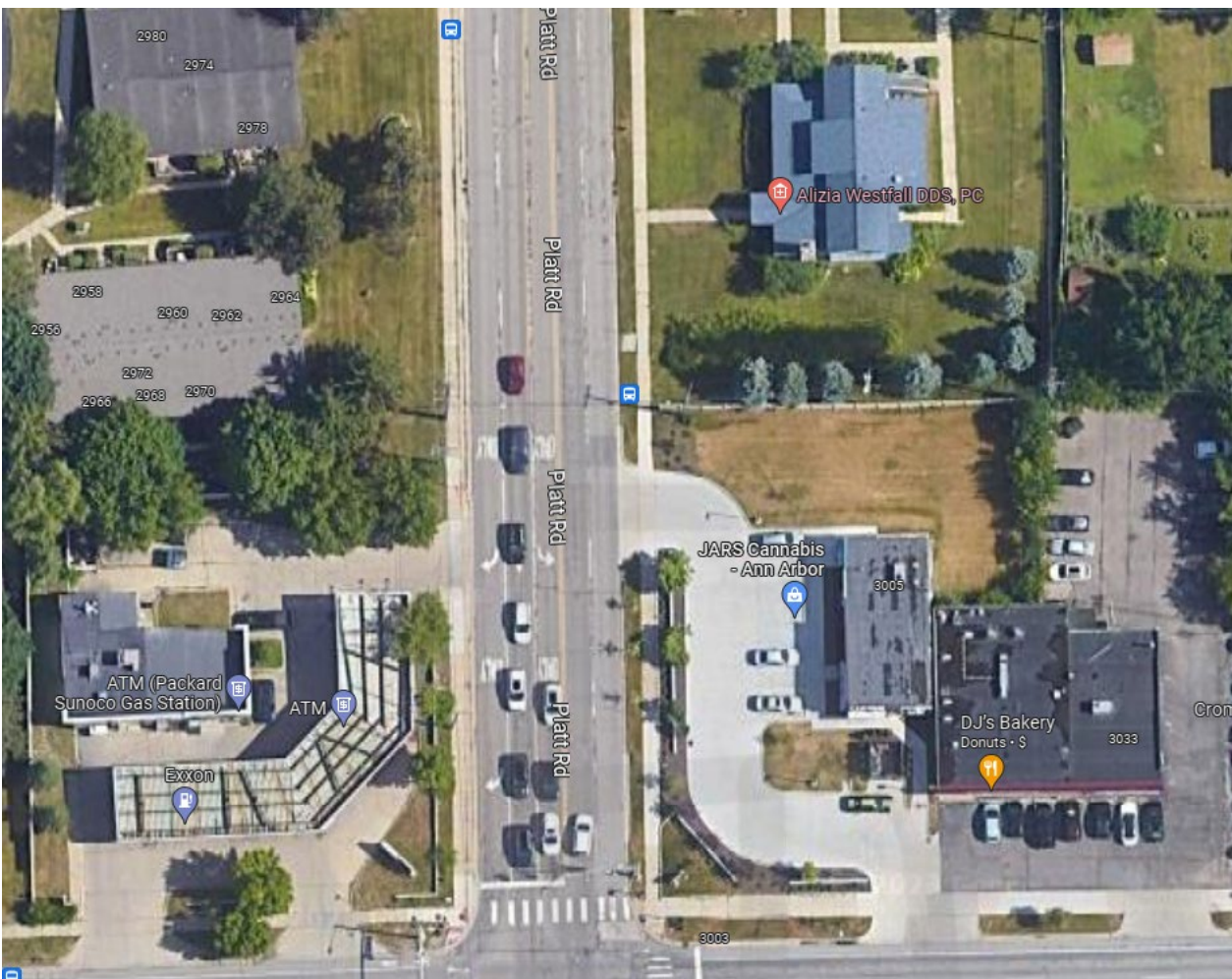




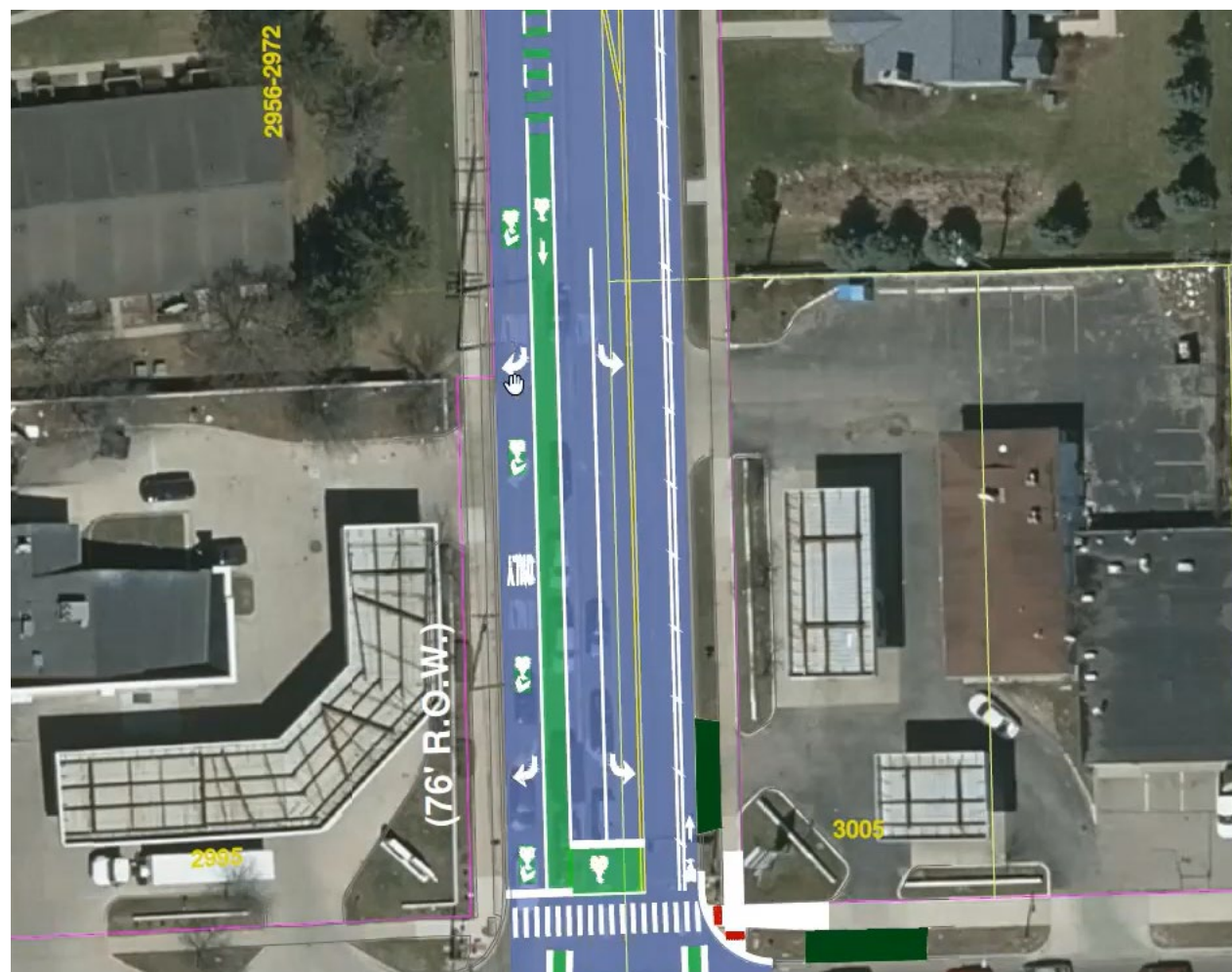
# Road Reconfigurations/Road Diets

## What we're doing...

Before



Platt



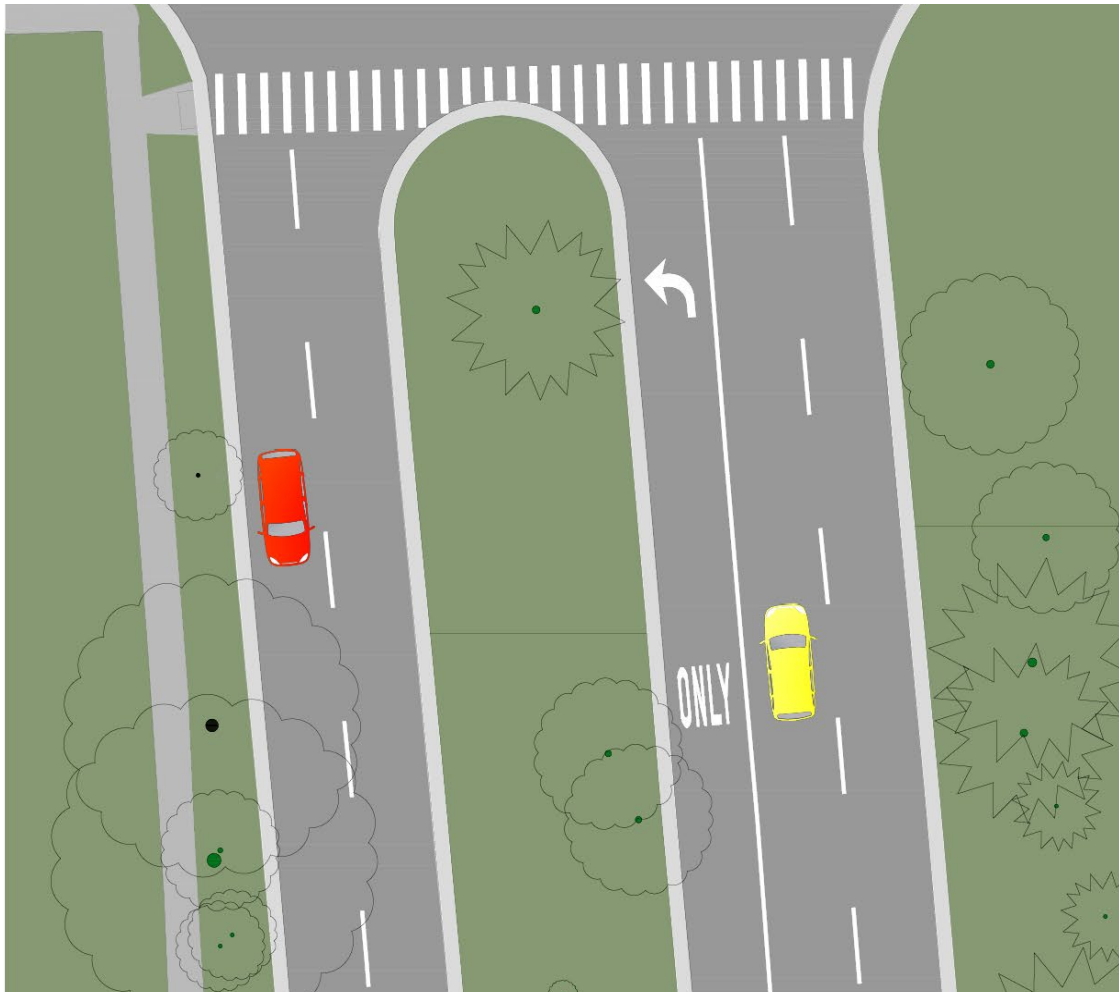
After



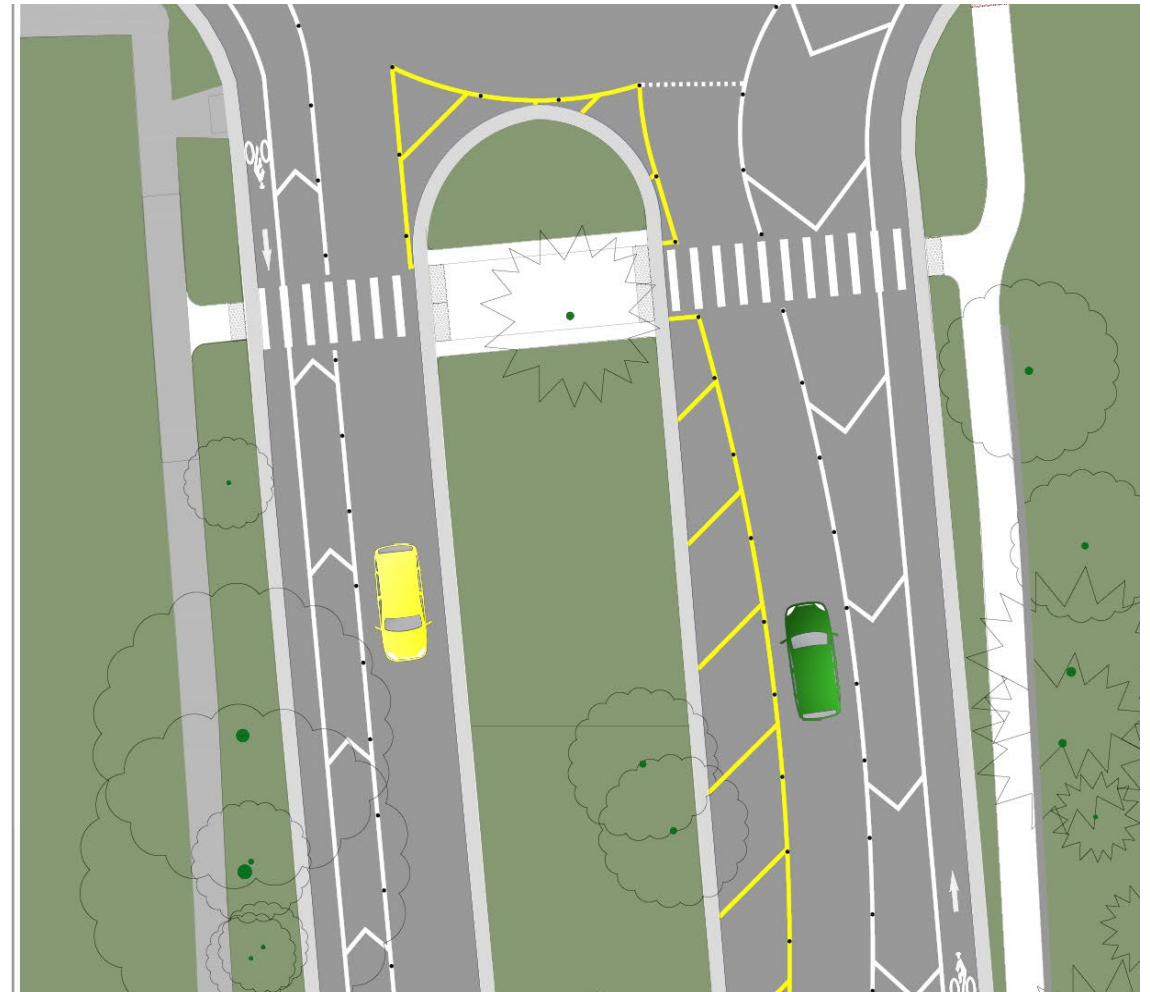
# Road Reconfigurations/Road Diets

## What we're doing...

Before



Earhart



After

# Road Reconfigurations/Road Diets

## What's next...

### Speed Management Program

#### Lane Reduction

(also called Road Diet)

Lane reductions reallocate street space from existing travel lanes to other uses. Unlike lane narrowing techniques, lane reductions reduce the number of lanes. They should be paired with lane narrowing so that lane reductions do not result in fewer but wider lanes.

- **Type:** Cross-Section Modification
- **Ann Arbor Example:** N Maple Road
- **Example from Peer City:** [Park Street and Westnedge Avenue in Kalamazoo, MI](#)
- **More Information:** [FHWA Road Diets](#)



# Road Reconfigurations/Road Diets

## What's next...

Multi-lane roads (*under City jurisdiction*)

- Stadium
- E. Packard
- Eisenhower
- S. Main/Ann Arbo-Saline
- S. State
- Plymouth
- Huron Parkway
- Fuller





# Questions?

---



Thank you!

**ANN ARBOR  
MOVING  
TOGETHER**  

---

**TOWARDS VISION ZERO**