

www.A2CLT.org

Ann Arbor Community Land Trust

COMING
SOON

NEW HOMES FOR CRITICAL EMPLOYEES

In the Ann Arbor housing market, people struggle to find homes they can afford--especially the critical employees that the community relies on every day. The Ann Arbor Community Land Trust has a different vision, one where our community takes charge of its housing destiny. A2CLT is a nonprofit developer with a mission to create homeownership for the critical workers that sustain the city. Homes near work offer the benefits of lower commuting costs, walking, biking, or busing to work, fewer carbon emissions, more free time, and stronger social ties. Everyone in the community is invited to become a member of A2CLT so we can build the homes we need.



COTTAGE HOMES & TWO UNIT TOWNHOMES PRICED AT \$125,000, \$225,000, \$325,000

Eligible households must work for the City, County, State, or Federal Agencies, University of Michigan and Michigan Medicine, VA Hospital, Ann Arbor Public Schools, District Library, Police Department, or Fire Department, U.S. Postal Service, or as an Early Childhood/Child Care Worker. For more eligibility details, go to www.A2CLT.org.

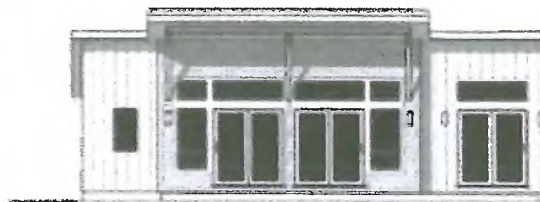
QUESTIONS?

Sarah Lorenz
SLorenz@A2CLT.org

More Ideas for A2CLT Townie Homes

Fast and Inexpensive to Build

600-1300sf



MODULE Homes Module Process Why Module More



2 Bedrooms
1 Bathrooms
768 Square Feet

This two-story home features an open kitchen and living area on the first floor, along with a central staircase. The second floor features two bedrooms, a shared bathroom, and a convenient laundry area near the stairs. This model can be placed on either a basement or crawlspace foundation, depending on site constraints or developer preference.



Floor Plan

