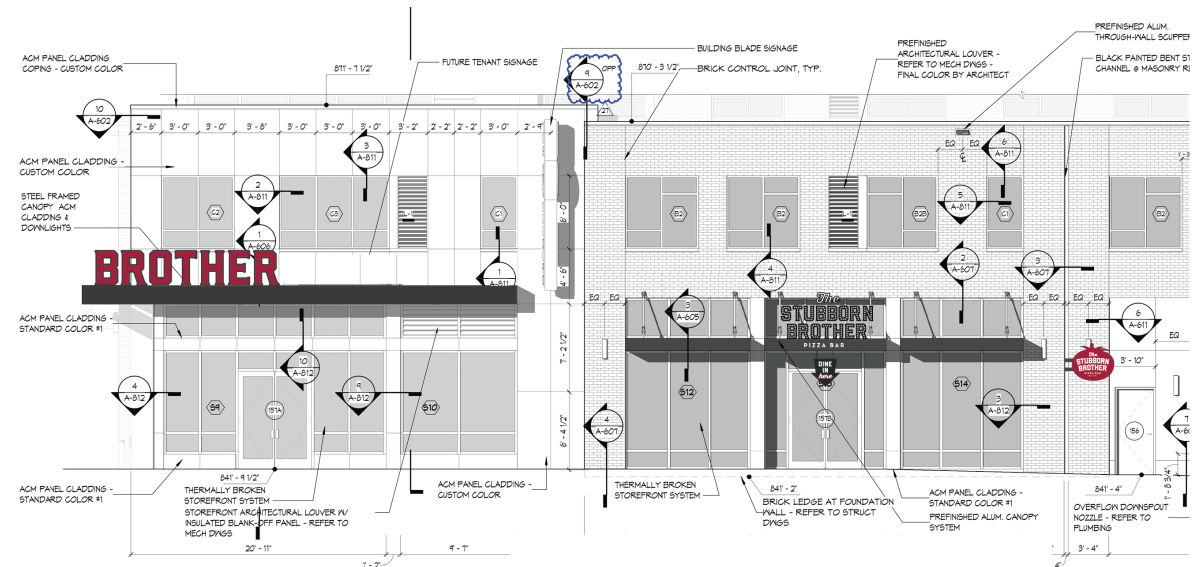
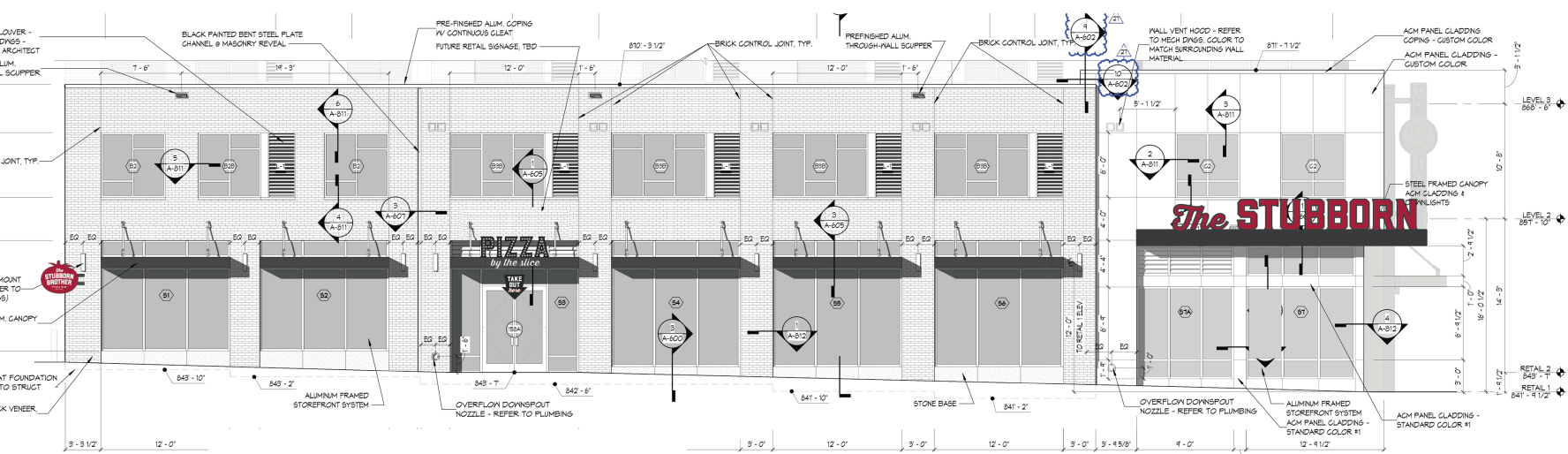


EXTERIOR SIGNAGE



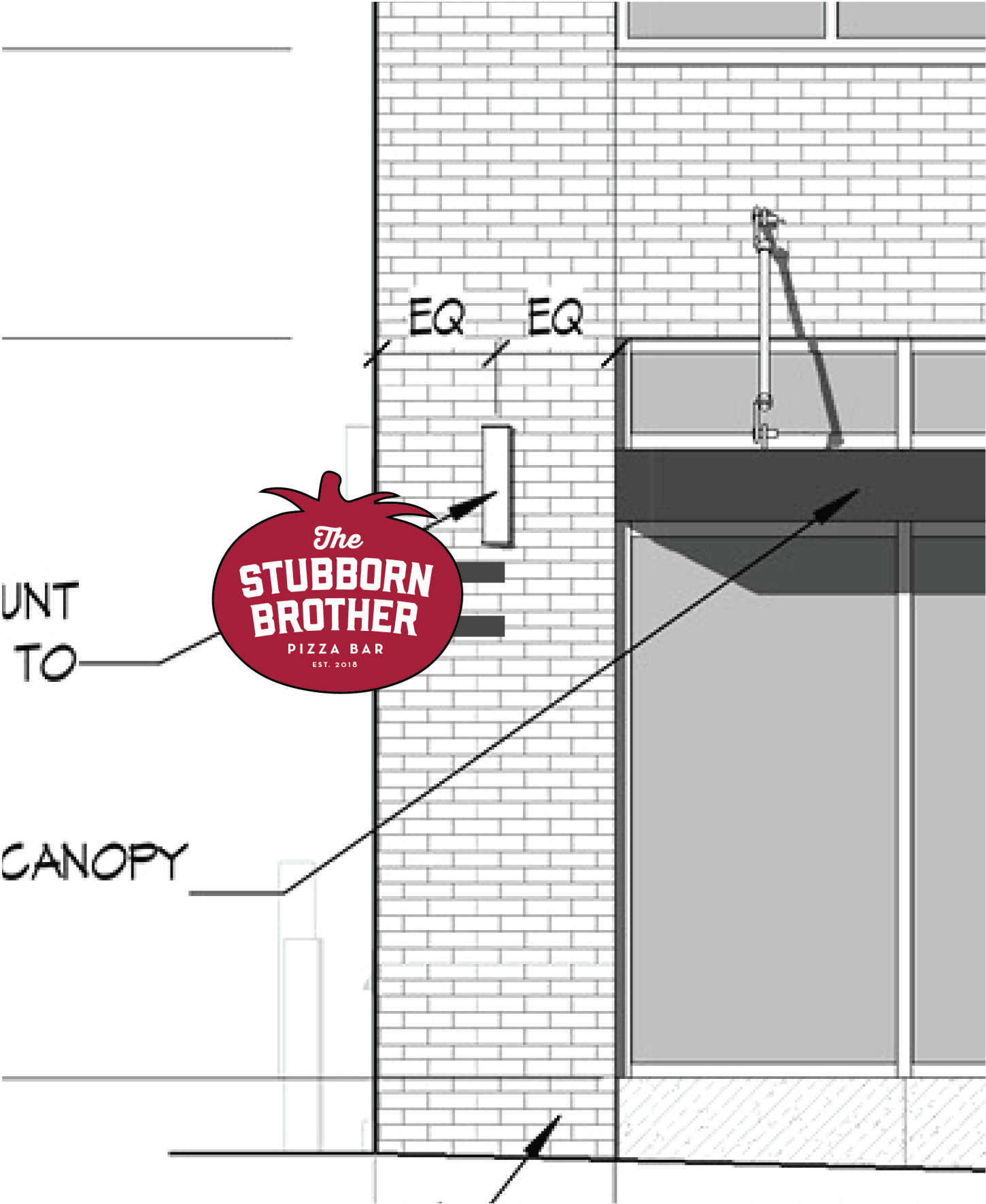
EXTERIOR SIGNAGE

Tomato Blade Signs

- Two locations:
- blackened steel edges, painted red
 - set sideways off wall about 8"
 - approximately 3'6" wide by 2'8" high
 - will require sample of color and materials
 - spotlight lighting



INSPIRATION REFERENCE



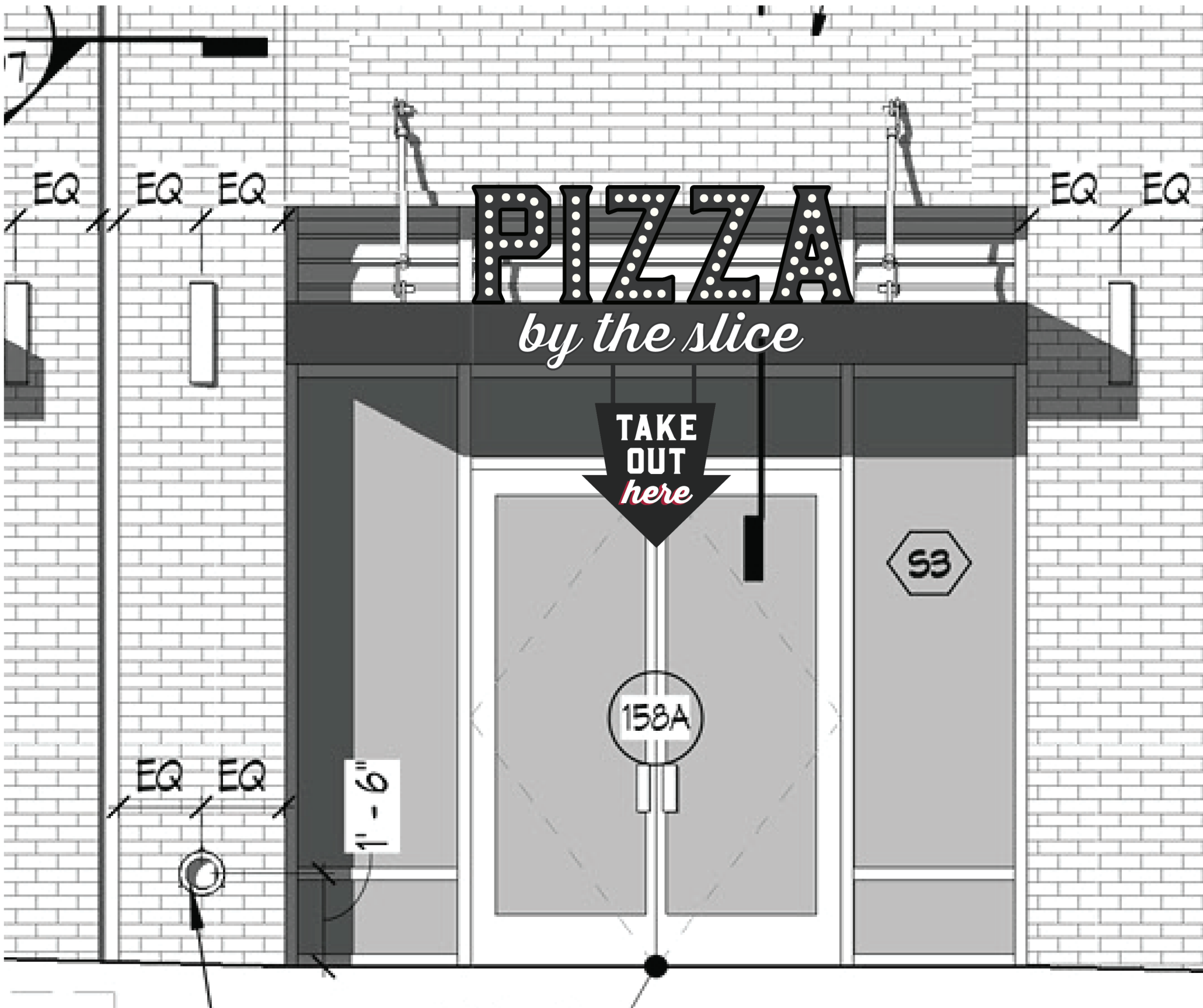
EXTERIOR SIGNAGE

Carryout Entrance

- Marquee lettering PIZZA
with channel lettering BY THE SLICE
over awning
- blackened steel edges
 - size about 6' wide by 3' high



- Hanging arrow TAKEOUT HERE
- no lighting
 - blackened steel
 - hanging from awning
 - size about 2' x 2'



EXTERIOR SIGNAGE

Dine-in Entrance

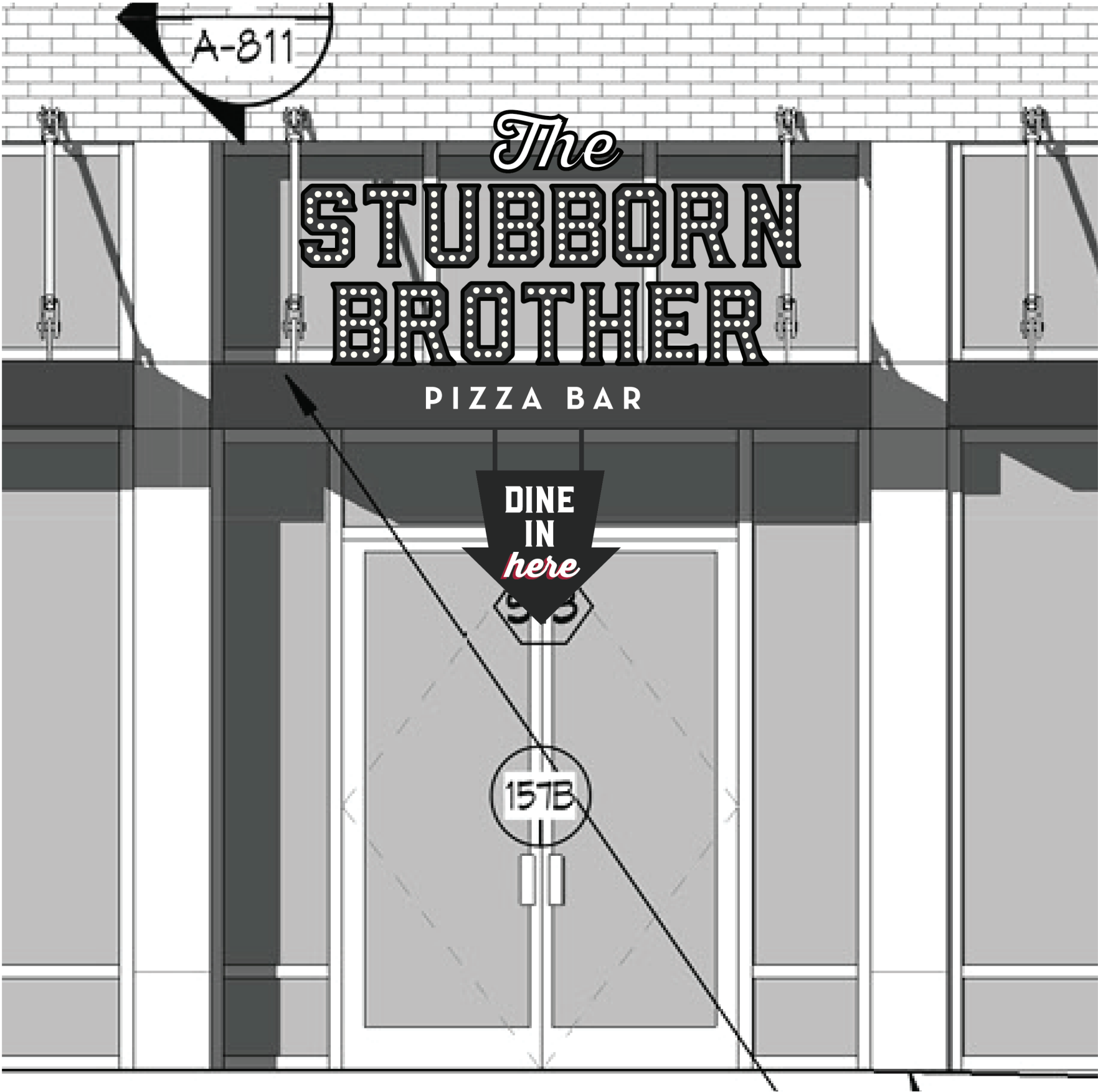
Marquee lettering STUBBORN BROTHER
with channel lettering The and PIZZA BAR
over awning

- blackened steel edges
- size about 7'4" wide by 4' high



Hanging arrow DINE IN HERE

- no lighting
- blackened steel
- hanging from awning
- size about 2' x 2'



EXTERIOR SIGNAGE

Corner Signage

3D Channel lettering
THE STUBBORN BROTHER
PIZZA BAR wrapign around
the corner

- internally lit
- blackened steel edges
- "The Stubborn" =
22'6" wide by 3' high
- "Brother" =
14'6" wide by 3' high

