

OVERALL WATER LINE EASEMENT EXHIBIT

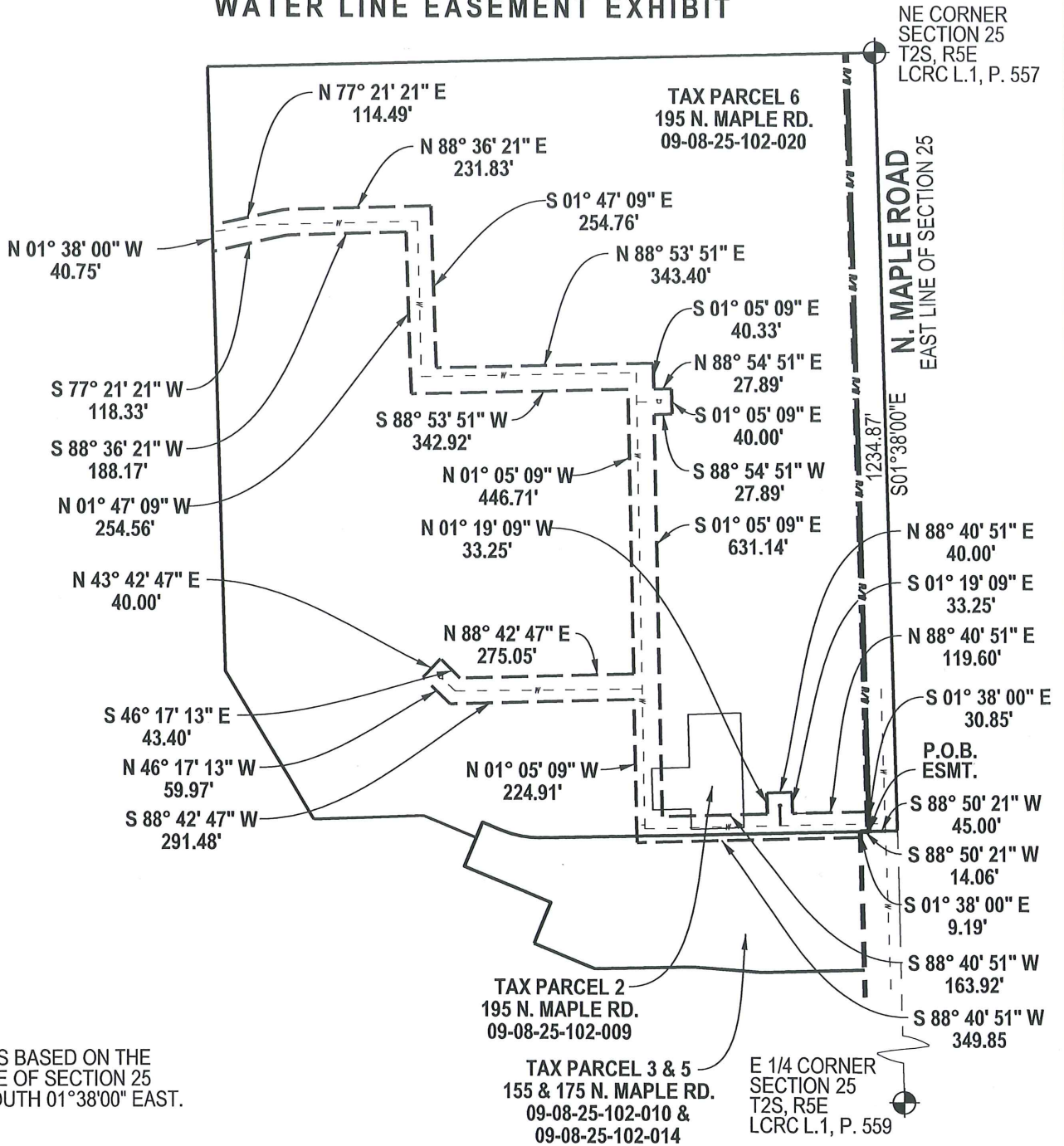
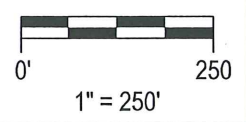


EXHIBIT A



Beth A. Braun 11/27/17
BETH A. BRAUN, P.S.
 LICENSED PROFESSIONAL SURVEYOR
 MICHIGAN LICENSE NO. 52461
 DATE: 11/22/17



DRAWN BY: JEC
 CHECKED BY: BAB

PREPARED FOR:
BRIXMOR PROPERTY GROUP
 22054 Farmington Road,
 Farmington, Michigan 48336

JOB No.: B3130004 SHEET 1 OF 2



2365 HAGGERTY ROAD S.
 CANTON, MICHIGAN 48188
 TEL: (734) 397-3100
 FAX: (734) 397-3131

EASEMENT DESCRIPTIONS

OVERALL HYDRANT EASEMENT DESCRIPTION:

A WATER LINE EASEMENT GENERALLY BEING 40 FEET WIDE SITUATED IN THE CITY OF ANN ARBOR, COUNTY OF WASHTENAW, STATE OF MICHIGAN BEING MORE PARTICULARLY DESCRIBED AS FOLLOWS: COMMENCING AT THE NORTHEAST CORNER OF SECTION 25, TOWN 2 SOUTH, RANGE 5 EAST, CITY OF ANN ARBOR, WASHTENAW COUNTY, MICHIGAN; THENCE SOUTH 1 DEGREE 38 MINUTES EAST 1234.87 FEET; THENCE SOUTH 88 DEGREES 50 MINUTES 21 SECONDS WEST 45.00 FEET TO THE POINT OF BEGINNING; THENCE CONTINUING SOUTH 88 DEGREES 50 MINUTES 21 SECONDS WEST 14.06 FEET; THENCE SOUTH 01 DEGREE 38 MINUTES 00 SECONDS EAST 9.19 FEET; THENCE SOUTH 88 DEGREES 40 MINUTES 51 SECONDS WEST 349.85 FEET; THENCE NORTH 01 DEGREES 05 MINUTES 09 SECONDS WEST 224.91 FEET; THENCE SOUTH 88 DEGREES 42 MINUTES 47 SECONDS WEST 291.48 FEET; THENCE NORTH 46 DEGREES 17 MINUTES 13 SECONDS WEST 59.97 FEET; THENCE NORTH 43 DEGREES 42 MINUTES 47 SECONDS EAST 40 FEET; THENCE SOUTH 46 DEGREES 17 MINUTES 13 SECONDS EAST 43.40 FEET; THENCE NORTH 88 DEGREES 42 MINUTES 47 SECONDS EAST 275.05 FEET; THENCE NORTH 01 DEGREES 05 MINUTES 09 SECONDS WEST 446.71 FEET; THENCE SOUTH 88 DEGREES 53 MINUTES 51 SECONDS WEST 342.92 FEET; THENCE NORTH 01 DEGREES 47 MINUTES 09 SECONDS WEST 254.56 FEET; THENCE SOUTH 88 DEGREES 36 MINUTES 21 SECONDS WEST 188.17 FEET; SOUTH 77 DEGREES 21 MINUTES 21 SECONDS WEST 118.33 FEET TO THE WEST PROPERTY LINE; THENCE ALONG SAID WEST PROPERTY LINE NORTH 01 DEGREES 38 MINUTES 00 SECONDS WEST 40.75 FEET; THENCE NORTH 77 DEGREES 21 MINUTES 21 SECONDS EAST 114.49 FEET; THENCE NORTH 88 DEGREES 36 MINUTES 21 SECONDS EAST 231.83 FEET; THENCE SOUTH 01 DEGREES 47 MINUTES 09 SECONDS EAST 254.76 FEET; NORTH 88 DEGREES 53 MINUTES 51 SECONDS EAST 343.40 FEET; SOUTH 01 DEGREES 05 MINUTES 09 SECONDS EAST 40.33 FEET; NORTH 88 DEGREES 54 MINUTES 51 SECONDS EAST 27.89 FEET; SOUTH 01 DEGREES 05 MINUTES 09 SECONDS EAST 40.00 FEET; SOUTH 88 DEGREES 54 MINUTES 51 SECONDS WEST 27.89; SOUTH 01 DEGREES 05 MINUTES 09 SECONDS EAST 631.14 FEET; NORTH 88 DEGREES 40 MINUTES 51 SECONDS EAST 163.92 FEET; NORTH 01 DEGREES 19 MINUTES 09 SECONDS WEST 33.25 FEET; THENCE NORTH 88 DEGREES 40 MINUTES 51 SECONDS EAST 40.00 FEET; THENCE SOUTH 01 DEGREES 19 MINUTES 09 SECONDS EAST 33.25 FEET; THENCE NORTH 88 DEGREES 40 MINUTES 51 SECONDS EAST 119.60 FEET; THENCE SOUTH 01 DEGREES 38 MINUTES 00 SECONDS EAST TO THE POINT OF BEGINNING. EASEMENT CONTAINS 2.18 ACRES.

EXHIBIT A Cont.



Beth A. Braun 11/27/17

BETH A. BRAUN, P.S.
 LICENSED PROFESSIONAL SURVEYOR
 MICHIGAN LICENSE NO. 52461
 DATE: 11/17/17

PREPARED FOR:
BRIXMOR PROPERTY GROUP

22054 Farmington Road,
 Farmington, Michigan 48336

DRAWN BY: JEC

CHECKED BY: BAB

JOB No.: B3130004

SHEET 2 OF 2



2365 HAGGERTY ROAD S.
 CANTON, MICHIGAN 48188
 TEL: (734) 397-3100
 FAX: (734) 397-3131

TAX PARCEL 6 WATER LINE EASEMENT EXHIBIT



NE CORNER
SECTION 25
T2S, R5E
LCRC L.1, P. 557

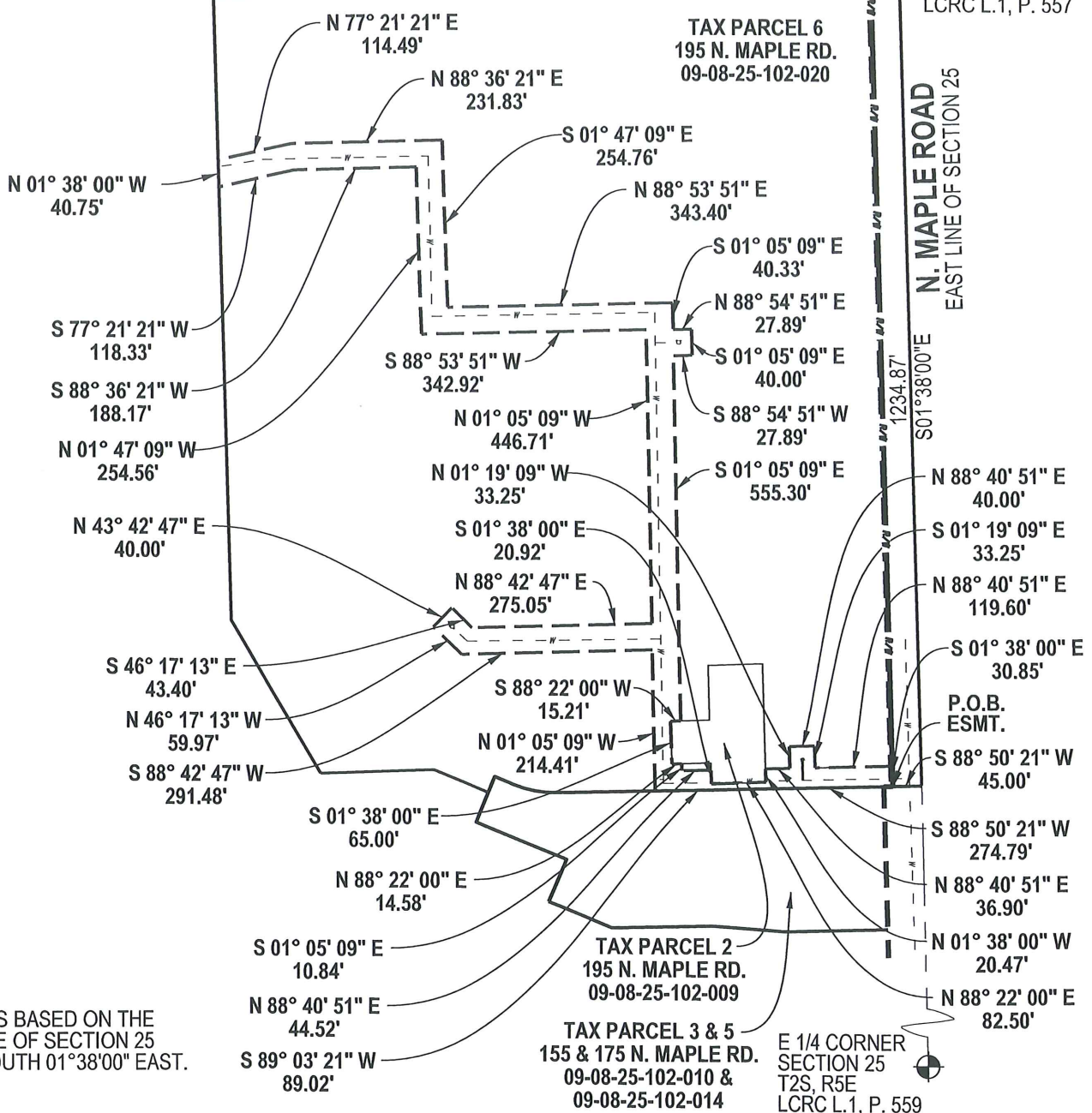


EXHIBIT A Cont.



Beth A. Braun 11/21/17
BETH A. BRAUN, P.S.
LICENSED PROFESSIONAL SURVEYOR
MICHIGAN LICENSE NO. 52461
DATE: 11/22/17



DRAWN BY: JEC
CHECKED BY: BAB

PREPARED FOR:
BRIXMOR PROPERTY GROUP
22054 Farmington Road,
Farmington, Michigan 48336
JOB No.: B3130004 SHEET 1 OF 2



2365 HAGGERTY ROAD S.
CANTON, MICHIGAN 48188
TEL: (734) 397-3100
FAX: (734) 397-3131

11/22/2017 10:49:07 AM W:\Projects\Projects A-E\B3130004\CAD\SURVEY\Sanitary Easement PA1321B3130004_WaterEsmt.dgn

EASEMENT DESCRIPTIONS

TAX PARCEL 6 HYDRANT EASEMENT DESCRIPTION:

A WATER LINE EASEMENT GENERALLY BEING 40 FEET WIDE SITUATED IN THE CITY OF ANN ARBOR, COUNTY OF WASHTENAW, STATE OF MICHIGAN BEING MORE PARTICULARLY DESCRIBED AS FOLLOWS: COMMENCING AT THE NORTHEAST CORNER OF SECTION 25, TOWN 2 SOUTH, RANGE 5 EAST, CITY OF ANN ARBOR, WASHTENAW COUNTY, MICHIGAN; THENCE SOUTH 1 DEGREE 38 MINUTES EAST 1234.87 FEET; THENCE SOUTH 88 DEGREES 50 MINUTES 21 SECONDS WEST 45.00 FEET TO THE POINT OF BEGINNING; THENCE CONTINUING SOUTH 88 DEGREES 50 MINUTES 21 SECONDS WEST ALONG SOUTH PARCEL LINE 274.79 FEET; THENCE SOUTH 89 DEGREES 03 MINUTES 21 SECONDS WEST ALONG SOUTH PARCEL LINE 89.02 FEET; THENCE NORTH 01 DEGREES 05 MINUTES 09 SECONDS WEST 214.41 FEET; THENCE SOUTH 88 DEGREES 42 MINUTES 47 SECONDS WEST 291.48 FEET; THENCE NORTH 46 DEGREES 17 MINUTES 13 SECONDS WEST 59.97 FEET; THENCE NORTH 43 DEGREES 42 MINUTES 47 SECONDS EAST 40.00 FEET; THENCE SOUTH 46 DEGREES 17 MINUTES 13 SECONDS EAST 43.40 FEET; THENCE NORTH 88 DEGREES 42 MINUTES 47 SECONDS EAST 275.05 FEET; THENCE NORTH 01 DEGREES 05 MINUTES 09 SECONDS WEST 446.71 FEET; THENCE SOUTH 88 DEGREES 53 MINUTES 51 SECONDS WEST 342.92 FEET; THENCE NORTH 01 DEGREES 47 MINUTES 09 SECONDS WEST 254.56 FEET; THENCE SOUTH 88 DEGREES 36 MINUTES 21 SECONDS WEST 188.17 FEET; SOUTH 77 DEGREES 21 MINUTES 21 SECONDS WEST 118.33 FEET TO THE WEST PROPERTY LINE; THENCE ALONG SAID WEST PROPERTY LINE NORTH 01 DEGREES 38 MINUTES 00 SECONDS WEST 40.75 FEET; THENCE NORTH 77 DEGREES 21 MINUTES 21 SECONDS EAST 114.49 FEET; THENCE NORTH 88 DEGREES 36 MINUTES 21 SECONDS EAST 231.83 FEET; THENCE SOUTH 01 DEGREES 47 MINUTES 09 SECONDS EAST 254.76 FEET; NORTH 88 DEGREES 53 MINUTES 51 SECONDS EAST 343.40 FEET; SOUTH 01 DEGREES 05 MINUTES 09 SECONDS EAST 40.33 FEET; NORTH 88 DEGREES 54 MINUTES 51 SECONDS EAST 27.89 FEET; SOUTH 01 DEGREES 05 MINUTES 09 SECONDS EAST 40.00 FEET; SOUTH 88 DEGREES 54 MINUTES 51 SECONDS WEST 27.89; SOUTH 01 DEGREES 05 MINUTES 09 SECONDS EAST 555.30 FEET; THENCE THE FOLLOWING THREE COURSES AROUND AN INTERIOR PARCEL LINE: (1) SOUTH 88 DEGREES 22 MINUTES 00 SECONDS WEST 15.21 FEET; (2) SOUTH 01 DEGREES 38 MINUTES 00 SECONDS EAST 65.00 FEET; (3) NORTH 88 DEGREES 22 MINUTES 00 SECONDS EAST 14.58 FEET; THENCE SOUTH 01 DEGREES 05 MINUTES 09 SECONDS EAST 10.84 FEET; THENCE NORTH 88 DEGREES 40 MINUTES 51 SECONDS EAST 44.52 FEET; THENCE THE FOLLOWING THREE COURSES AROUND AN INTERIOR PARCEL LINE: (1) SOUTH 01 DEGREES 38 MINUTES 00 SECONDS EAST 20.92 FEET; (2) NORTH 88 DEGREES 22 MINUTES 00 SECONDS EAST 82.50 FEET; (3) NORTH 01 DEGREES 38 MINUTES 00 SECONDS WEST; THENCE NORTH 88 DEGREES 40 MINUTES 51 SECONDS EAST 36.90 FEET; NORTH 01 DEGREES 19 MINUTES 09 SECONDS WEST 33.25 FEET; THENCE NORTH 88 DEGREES 40 MINUTES 51 SECONDS EAST 40.00 FEET; THENCE SOUTH 01 DEGREES 19 MINUTES 09 SECONDS EAST 33.25 FEET; THENCE NORTH 88 DEGREES 40 MINUTES 51 SECONDS EAST 119.60 FEET; THENCE SOUTH 01 DEGREES 38 MINUTES 00 SECONDS EAST 30.85 FEET TO THE POINT OF BEGINNING. EASEMENT CONTAINS 2.08 ACRES.

EXHIBIT A Cont.

PREPARED FOR:
BRIXMOR PROPERTY GROUP

22054 Farmington Road,
Farmington, Michigan 48336

DRAWN BY: JEC

CHECKED BY: BAB

JOB No.: B3130004

SHEET 2 OF 2



Beth A. Braun 11/27/17

BETH A. BRAUN, P.S.
 LICENSED PROFESSIONAL SURVEYOR
 MICHIGAN LICENSE NO. 52461
 DATE: 11/17/17



2365 HAGGERTY ROAD S.
 CANTON, MICHIGAN 48188
 TEL: (734) 397-3100
 FAX: (734) 397-3131

TAX PARCEL 3&5 WATER LINE EASEMENT EXHIBIT

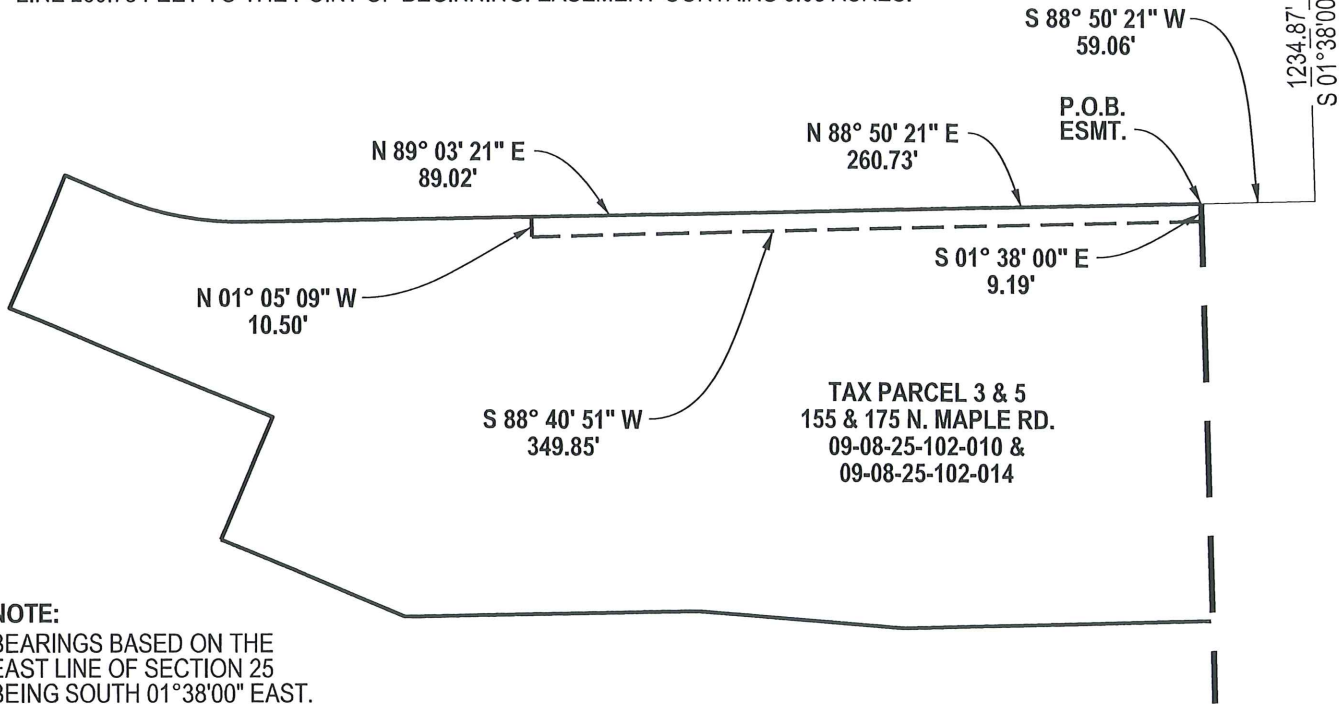


NE CORNER
SECTION 25
T2S, R5E
LCRC L.1, P. 557

N. MAPLE ROAD
EAST LINE OF SECTION 25

TAX PARCEL 3 & 5 HYDRANT EASEMENT DESCRIPTION:

A WATER LINE EASEMENT OF VARIABLE WIDTH SITUATED IN THE CITY OF ANN ARBOR, COUNTY OF WASHTENAW, STATE OF MICHIGAN BEING MORE PARTICULARLY DESCRIBED AS FOLLOWS: COMMENCING AT THE NORTHEAST CORNER OF SECTION 25, TOWN 2 SOUTH, RANGE 5 EAST, CITY OF ANN ARBOR, WASHTENAW COUNTY, MICHIGAN; THENCE SOUTH 1 DEGREE 38 MINUTES EAST 1234.87 FEET; THENCE SOUTH 88 DEGREES 50 MINUTES 21 SECONDS WEST 59.06 FEET TO THE POINT OF BEGINNING; THENCE SOUTH 01 DEGREE 38 MINUTES 00 SECONDS EAST 9.19 FEET; THENCE SOUTH 88 DEGREES 40 MINUTES 51 SECONDS WEST 349.85 FEET; THENCE NORTH 01 DEGREES 05 MINUTES 09 SECONDS WEST 10.50 FEET TO THE NORTH PARCEL LINE; THENCE NORTH 89 DEGREES 03 MINUTES 21 SECONDS EAST ALONG SAID NORTH PARCEL LINE 89.02 FEET; THENCE NORTH 88 DEGREES 50 MINUTES 21 SECONDS EAST ALONG SAID NORTH PARCEL LINE 260.73 FEET TO THE POINT OF BEGINNING. EASEMENT CONTAINS 0.08 ACRES.

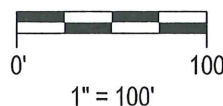


NOTE:
BEARINGS BASED ON THE
EAST LINE OF SECTION 25
BEING SOUTH 01°38'00" EAST.

EXHIBIT A Cont.



Beth A. Braun 11/27/17
BETH A. BRAUN, P.S.
LICENSED PROFESSIONAL SURVEYOR
MICHIGAN LICENSE NO. 52461
DATE: 11/22/17



DRAWN BY: JEC

CHECKED BY: BAB

PREPARED FOR:
BRIXMOR PROPERTY GROUP

22054 Farmington Road,
Farmington, Michigan 48336

JOB No.: B3130004

SHEET 1 OF 1



2365 HAGGERTY ROAD S.
CANTON, MICHIGAN 48188
TEL: (734) 397-3100
FAX: (734) 397-3131

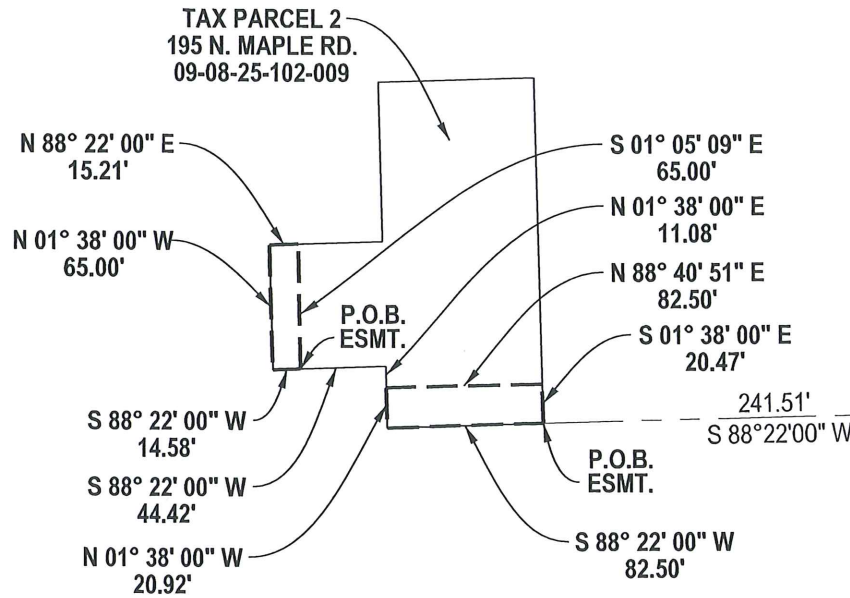
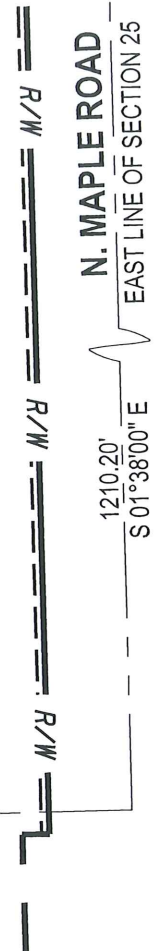
TAX PARCEL 2 WATER LINE EASEMENT EXHIBIT



TAX PARCEL 2 HYDRANT EASEMENT DESCRIPTION:

A WATER LINE EASEMENT OF VARIABLE WIDTH, COVERING TWO NON-CONTIGUOUS AREAS, SITUATED IN THE CITY OF ANN ARBOR, COUNTY OF WASHTENAW, STATE OF MICHIGAN BEING MORE PARTICULARLY DESCRIBED AS FOLLOWS: AREA 1: COMMENCING AT THE NORTHEAST CORNER OF SECTION 25, TOWN 2 SOUTH, RANGE 5 EAST, CITY OF ANN ARBOR, WASHTENAW COUNTY, MICHIGAN; THENCE SOUTH 1 DEGREE 38 MINUTES EAST 1210.20 FEET; THENCE SOUTH 88 DEGREES 22 MINUTES 00 SECONDS WEST 241.51 FEET TO THE POINT OF BEGINNING; THENCE CONTINUING SOUTH 88 DEGREES 22 MINUTES 00 SECONDS WEST ALONG THE SOUTH PARCEL LINE 82.50 FEET; THENCE NORTH 01 DEGREES 38 MINUTES 00 SECONDS WEST ALONG THE PARCEL LINE 20.92 FEET; THENCE NORTH 88 DEGREES 40 MINUTES 51 SECONDS EAST 82.50 FEET; THENCE SOUTH 01 DEGREES 38 MINUTES 00 SECONDS EAST ALONG THE EAST PARCEL LINE 20.47 FEET TO THE POINT OF BEGINNING. ALSO AREA 2: COMMENCING AT THE NORTHEAST CORNER OF SECTION 25, TOWN 2 SOUTH, RANGE 5 EAST, CITY OF ANN ARBOR, WASHTENAW COUNTY, MICHIGAN; THENCE SOUTH 1 DEGREE 38 MINUTES EAST 1210.20 FEET; THENCE SOUTH 88 DEGREES 22 MINUTES 00 SECONDS WEST 324.01 FEET; THENCE NORTH 01 DEGREES 38 MINUTES 00 SECONDS WEST ALONG THE PARCEL LINE 103.42 FEET; THENCE SOUTH 88 DEGREES 22 MINUTES 00 SECONDS WEST ALONG THE PARCEL LINE 44.42 FEET TO THE POINT OF BEGINNING; THENCE CONTINUING SOUTH 88 DEGREES 22 MINUTES 00 SECONDS WEST ALONG THE PARCEL LINE 14.58 FEET; THENCE NORTH 01 DEGREES 38 MINUTES 00 SECONDS WEST ALONG THE PARCEL LINE 65.00 FEET; THENCE NORTH 88 DEGREES 22 MINUTES 00 SECONDS EAST ALONG THE NORTH PARCEL LINE 15.21 FEET; THENCE SOUTH 01 DEGREES 05 MINUTES 09 SECONDS EAST 65.00 FEET TO THE POINT OF BEGINNING. EASEMENT CONTAINS 0.02 ACRES.

NE CORNER
SECTION 25
T2S, R5E
LCRC L.1, P. 557



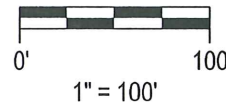
NOTE:

BEARINGS BASED ON THE EAST LINE OF SECTION 25 BEING SOUTH 01°38'00" EAST.

EXHIBIT A Cont.



Beth A. Braun 11/27/17
BETH A. BRAUN, P.S.
LICENSED PROFESSIONAL SURVEYOR
MICHIGAN LICENSE NO. 52461
DATE: 11/22/17



DRAWN BY: JEC

CHECKED BY: BAB

PREPARED FOR:
BRIXMOR PROPERTY GROUP

22054 Farmington Road,
Farmington, Michigan 48336

JOB No.: B3130004

SHEET 1 OF 1



2365 HAGGERTY ROAD S.
CANTON, MICHIGAN 48188
TEL: (734) 397-3100
FAX: (734) 397-3131