

BARTON NATURE AREA LONG TERM LAND LEASE & BOATHOUSE PROPOSAL



Relocating Rowing Organizations

The current Gallup Pond based rowing organizations, who have been accessing water out of Concordia University's campus since 2010, will have to cease operations once ownership changes hands. Since February 2024, we have been working with the City on a possible solution to relocate these programs.

Goal

Provide water access from Barton Nature Area onto Barton Pond for Skyline HS Crew, Washtenaw Rowing Center and associated entities to continue their operations and community wide impact.

Scope

Work with the City to facilitate a long term land lease agreement which allows the construction of a permanent boathouse to house the above organizations and their continued operations.

Location: Adjacent to Barton Dam & Barton Hills Village Hall

BARTON NATURE AREA LONG TERM LAND LEASE & BOATHOUSE PROPOSAL



Community Impact

Washtenaw Rowing Center provides access to rowing for middle school aged children across the county. WRC has been instrumental in programs and partnerships, making the sport truly accessible to anyone who wants to try it. A sport, which has significant college scholarship opportunities compared to others.

Public School Equity

Skyline High School would be the only Ann Arbor Public High School without access to rowing in the City. Skyline's program last year won it's 5th team State Championship and 8th National Title.

Economic Impact

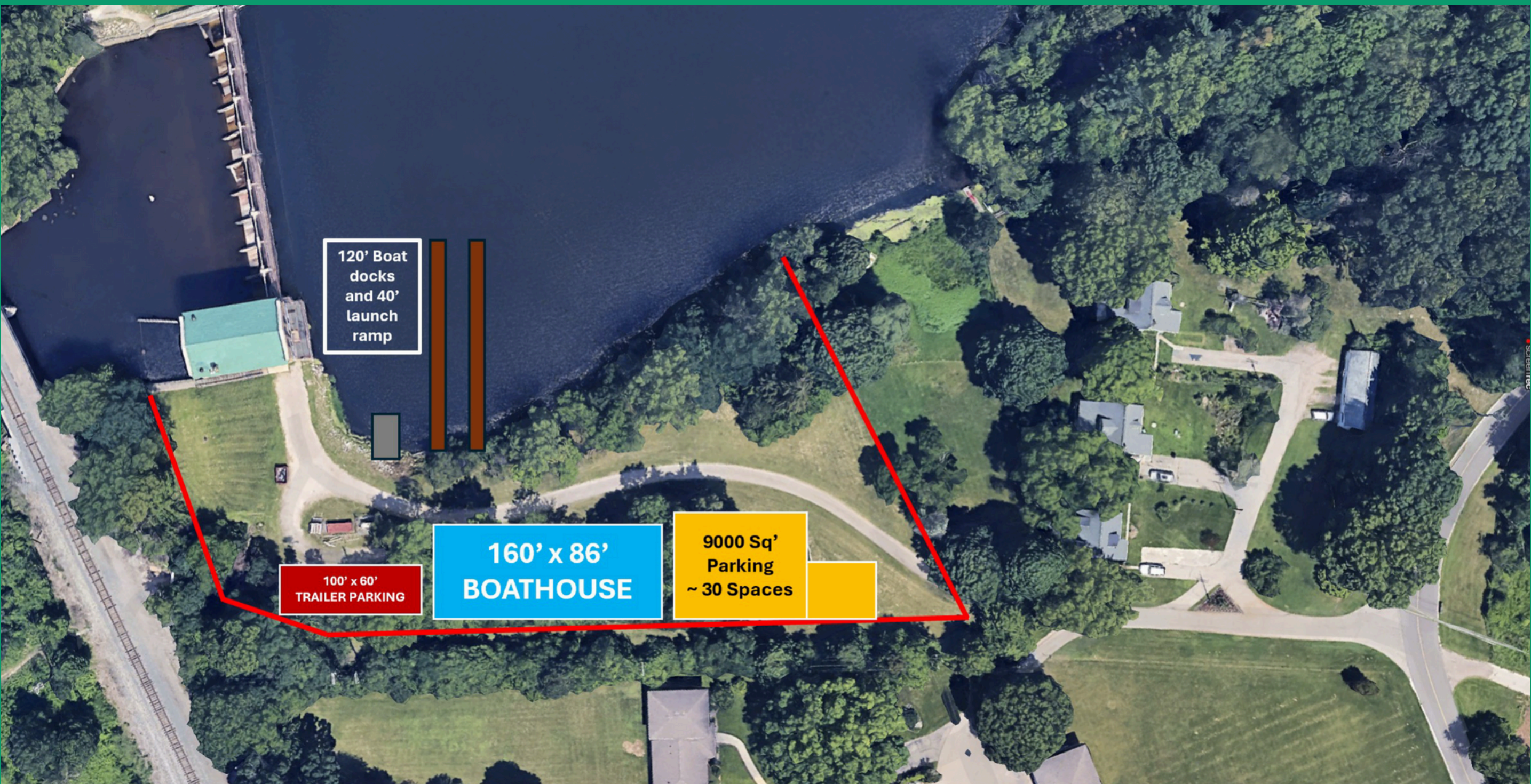
Washtenaw Rowing Center built the Kathryn Bennett Race Course in 2022, which is run by their staff, and Skyline's volunteers. The economic impact study published last year (see addendum), confirmed conservatively a \$15 Million impact to SE Michigan over 3 years. It is likely closer to \$24 Million.

Clear Vision & Plan

- Proven track record in fundraising, seeking a long term partnership, not a handout from the City.*
- Maintenance and Operations and Endowment planned to ensure sustainability of partnership.*
- Boathouse design concept already in process, see addendum.*

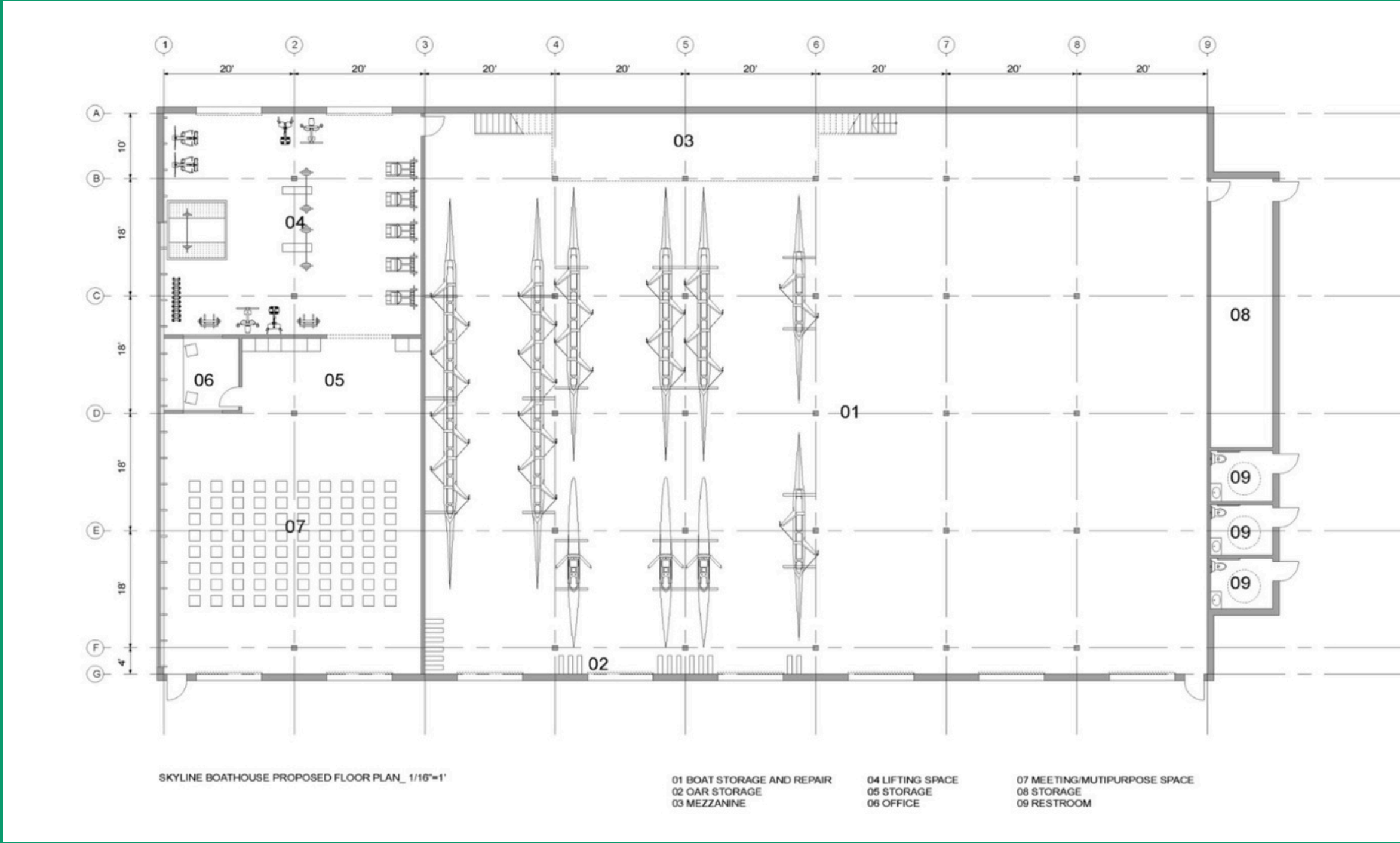
Why?

BARTON NATURE AREA LONG TERM LAND LEASE & BOATHOUSE PROPOSAL



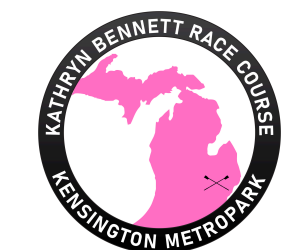
Addendum - Location Concept

BARTON NATURE AREA LONG TERM LAND LEASE & BOATHOUSE PROPOSAL

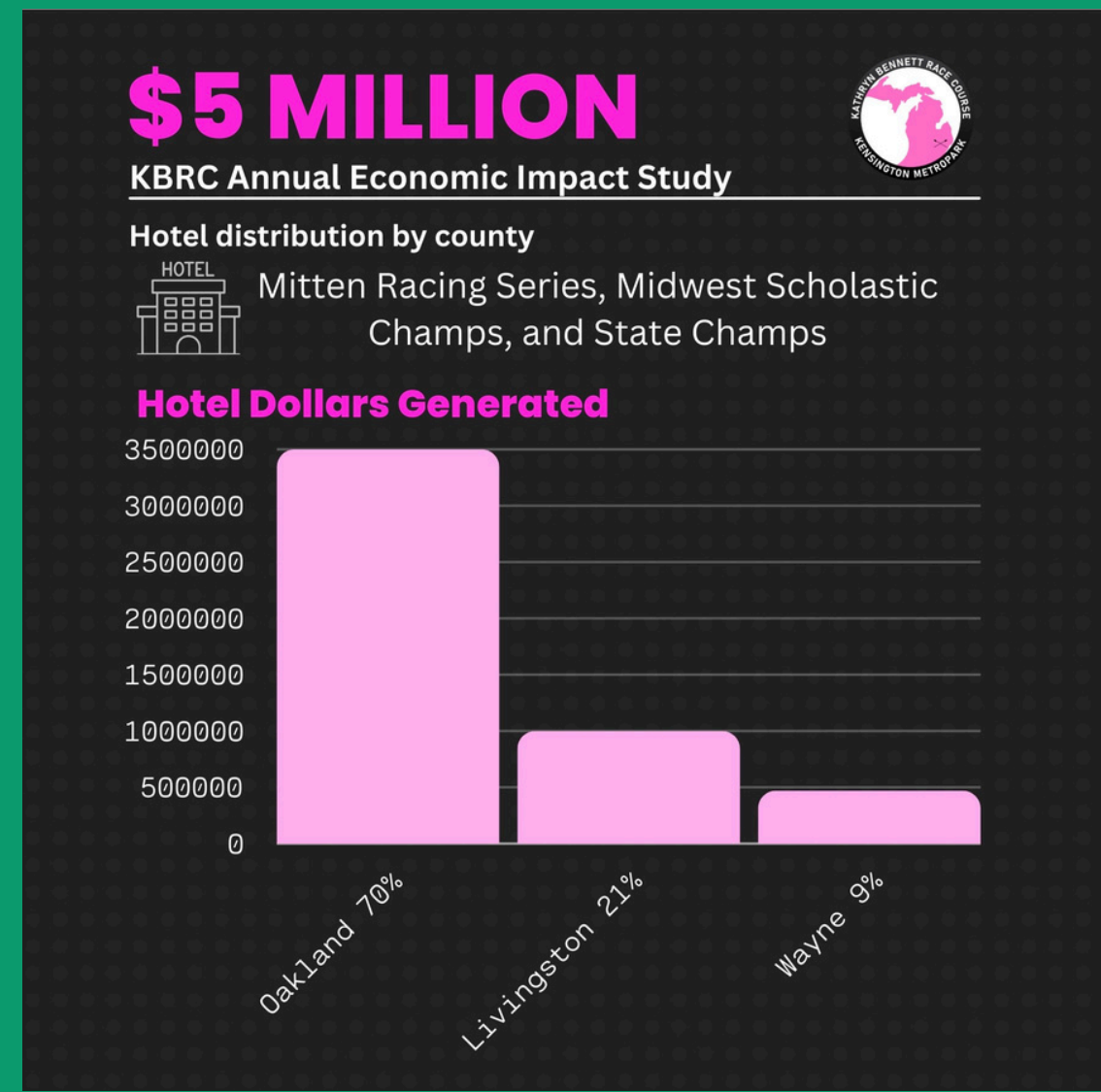
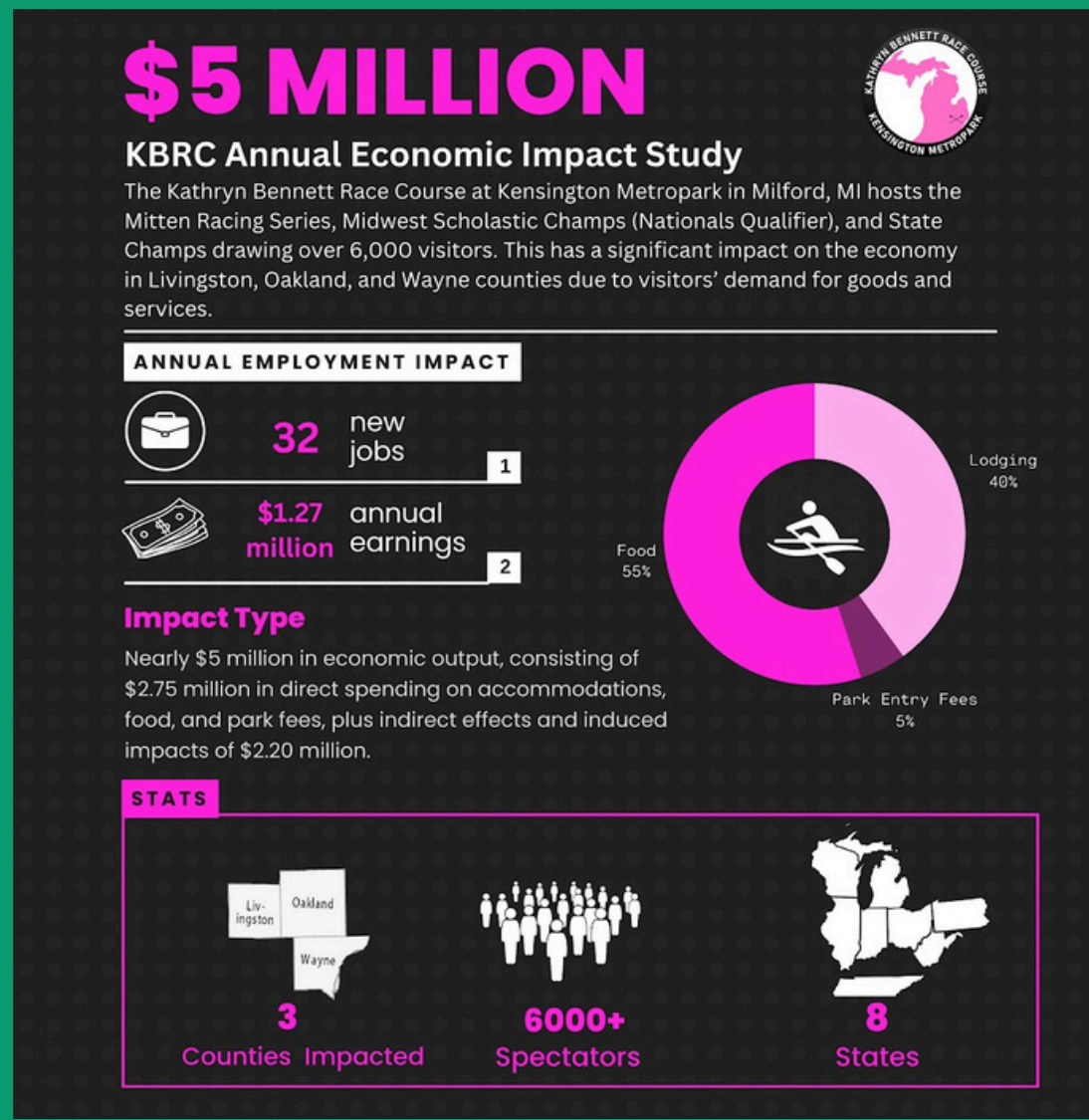
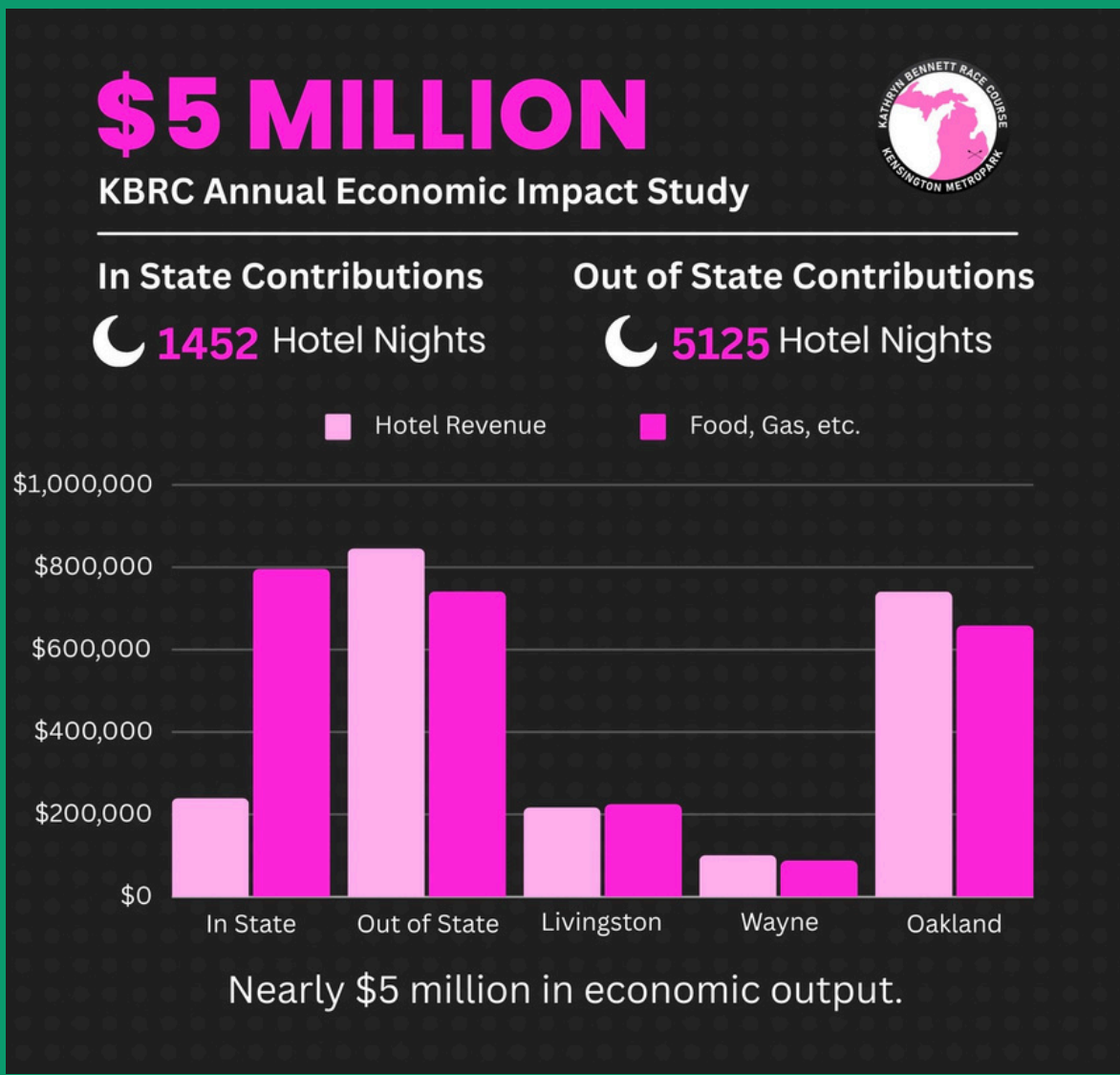


Addendum - Boathouse Concept & Design

BARTON NATURE AREA LONG TERM LAND LEASE & BOATHOUSE PROPOSAL



Kathryn Bennett Race Course



BARTON NATURE AREA LONG TERM LAND LEASE & BOATHOUSE PROPOSAL



Represents the Skyline High School Crew Team from Ann Arbor Public Schools.



Washtenaw Rowing Center provides middle school, high school and collegiate rowing opportunities all year round.



Southeast Michigan Rowing Foundation, is a non-profit dedicated to advocating and providing support for rowing initiatives locally.



Kathryn Bennett Race Course was founded in 2022, one of only 15 race courses in the country, provides a quality racing experience for high school athletes in Michigan and the Midwest on a National Championship caliber level course. Hosting the Mitten Racing Series, State and Midwest Championships (Nationals qualifier) annually.

Addendum - Partner Organizations