

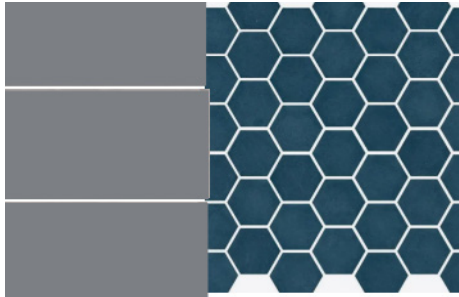
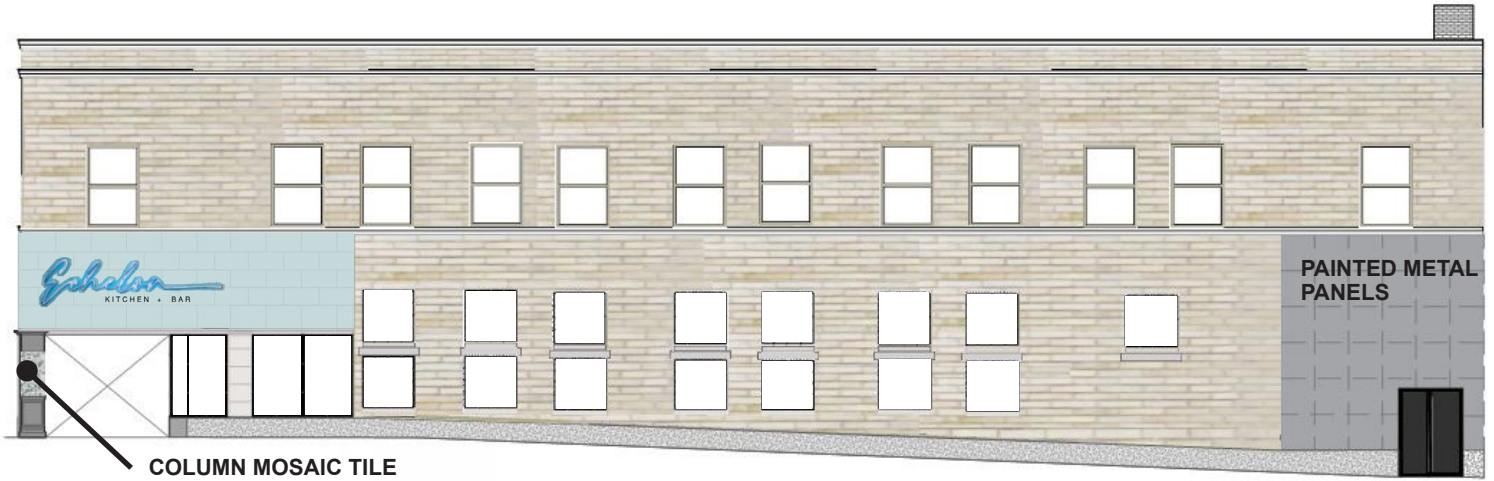
Ann Arbor Historic District Commission Submission

ECHELON Restaurant - Kresge Building
*200 SOUTH MAIN ST.
ANN ARBOR, MI 48104*

HOBBS + BLACK ARCHITECTS, INC
*(734) 663-4189
100 N STATE ST.
ANN ARBOR, MI 48104*

ELEVATION - PROPOSED

PROPOSED (NORTH) WASHINGTON ELEVATION

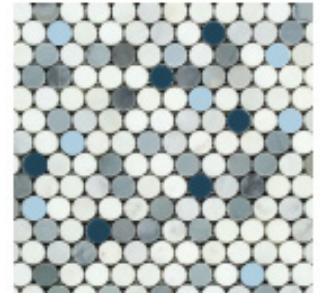


TILE @ ENTRY

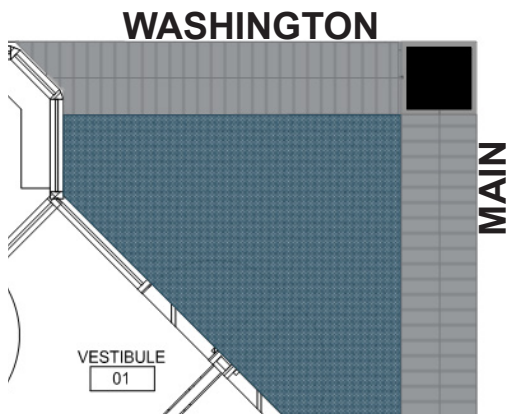


PAINTED EIFS

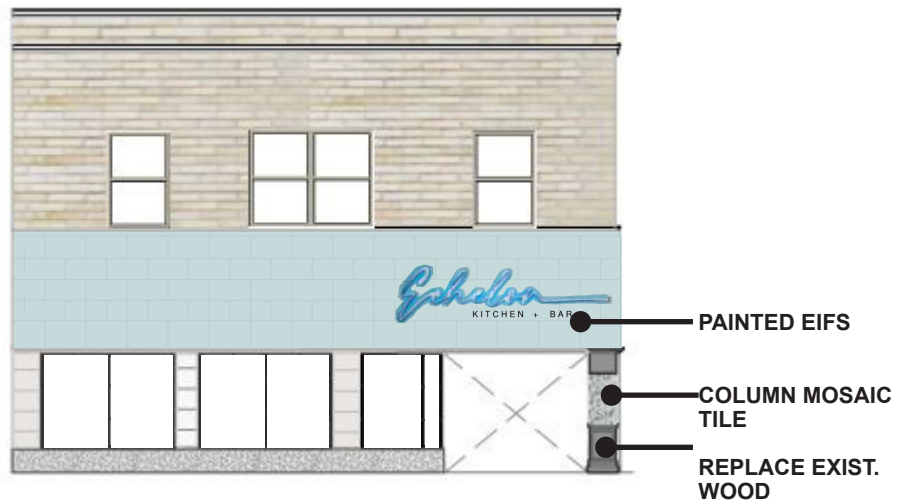
PAINTED WOOD @ COLUMN AND METAL PANEL



MOSAIC TILE @ COLUMN

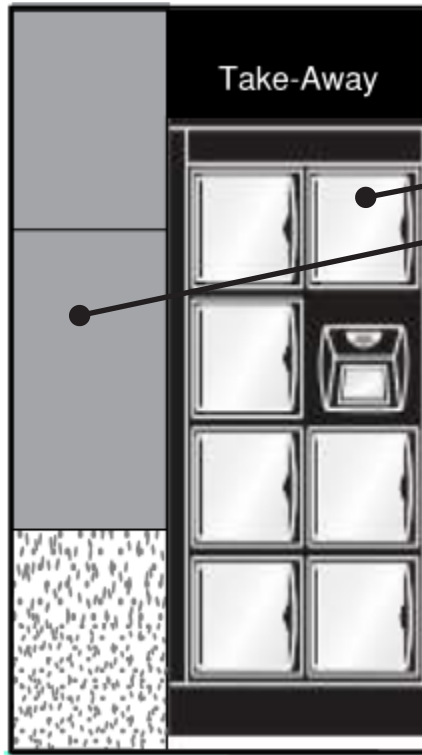


PROPOSED ENTRY TILE



PROPOSED (EAST) MAIN STREET ELEVATION

SPECIALTY ITEMS / EXTERIOR FOOD LOCKER



FOOD LOCKER

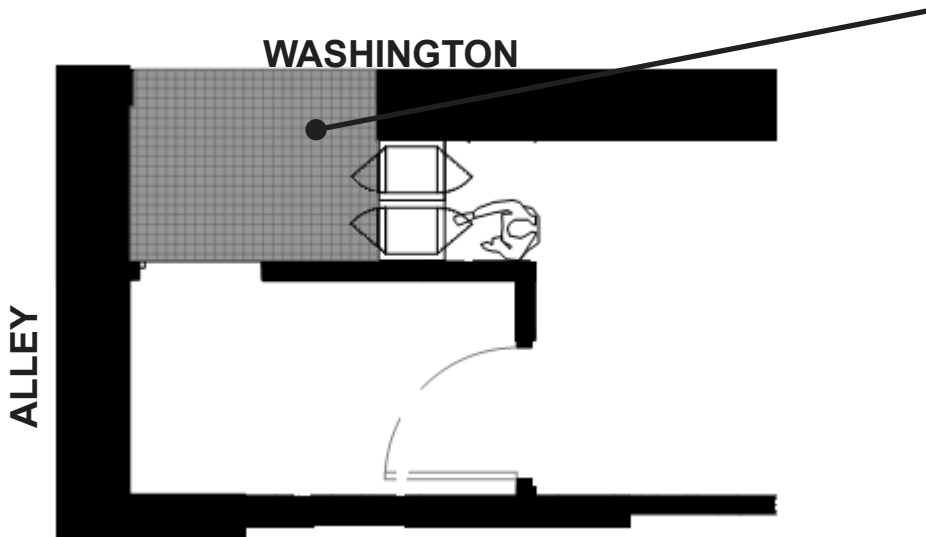
PAINTED METAL PANEL



PAINTED METAL PANEL



PROPOSED ENTRY STAMPED CONCRETE



PROPOSED ENTRY STAMPED CONCRETE

SPECIALTY ITEMS / EXTERIOR FOOD LOCKER



SMART ORDER PICKUP SOLUTIONS



LIGHTING 1 FOR 1 REPLACEMENT

FOOD LOCKER

REMOVED PANELS TO BE SALVAGED AND STORED



SPECIFIER STATEMENT: OrderHQ Exterior Locker, 107EX
 Specified food locker will be NSF-rated with a Type 3R & IP54 outdoor rating. Individual compartments will be NSF-rated with an IP44 rating. Includes minimum 7 compartments with black polycarbonate doors at front and translucent polycarbonate doors at back. Doors will automatically open when customer enters or scans pickup code. Unit to utilize compartment sensors to detect items added or removed. LED lights shall indicate order status and location of customer's order. Dwell time shall be customizable by operator. Touchscreen user interfaces at front and back to include 1-D and 2-D barcode and QR code scanner. Software will enable collection and analysis of order data.

FEATURES

- UNIT REMAINS DARK - INDIVIDUAL COMPARTMENT ILLUMINATES WHEN LOCKER IS UNLOCKED AND OPENED
- COLOR: POWDER COATED BLACK
- 12" TOUCH SCREEN DISPLAY WILL STAY LIT
- 6" OFF OF GRADE

107EX Controller & 108EX Satellite Lockers					
Overall Dimensions (W x H x D)	Depth w/Door Open Door Edge to Cabinet Base	Weight	Electrical 350 Watt	Shipping Dimensions (W x H x D)	Shipping Weight Approximate
42.5" x 76.25" x 20.5"	37"	340 lbs.	100VAC/60Hz	50" x 88" x 28"	615 lbs.
1080 mm x 1937 mm x 520 mm	937 mm	155 kg	240VAC/50Hz	1270 mm x 2235 mm x 712 mm	280 kg

Compartments & Doors			
Compartment Interior (W x H x D)	Door Dimensions* (W x H)	Depth w/Door Open Door Edge to Cabinet Base	Capacity per Compartment
13.3" x 11.3" x 16.3" 390 mm x 325 mm	15.33" x 12.81" 91 mm	15.4" 399 mm x 287 mm x 413 mm	15 lbs. 6.8 kg
Door Locking Mechanism: Solenoid door latch. Front doors equipped with integrated latch sensor. Back doors equipped with manual button actuation.			
*Door depth varies: 0.76" – 1.07" to 19.2 mm – 27.2 mm.			

User Touchscreens (Front & Rear)	
PCAP Touch	Active Area
12.1" / 307 mm 1024 x 768 Resolution	9.72" x 7.3" 247 mm x 185 mm
Tempered Glass: 0.158" / 4 mm thick	
Scanner: 1-D & 2-D Barcode or QR Code	
UI Temp Range: -22 F / -30 C to 140 F / 60 C	